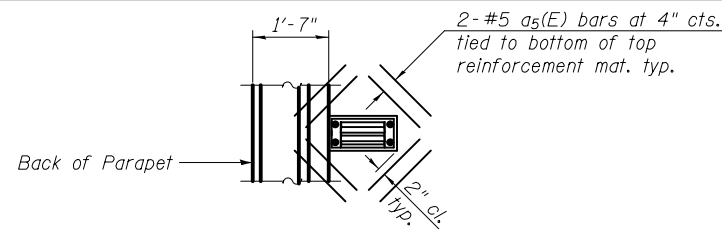
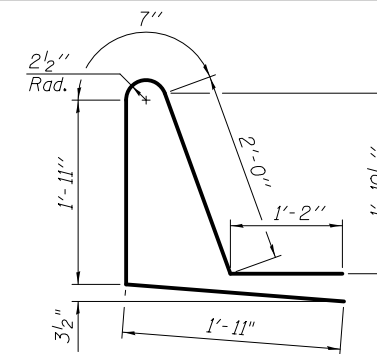


SECTION THRU PARAPET NEAR DRAINAGE SCUPPER

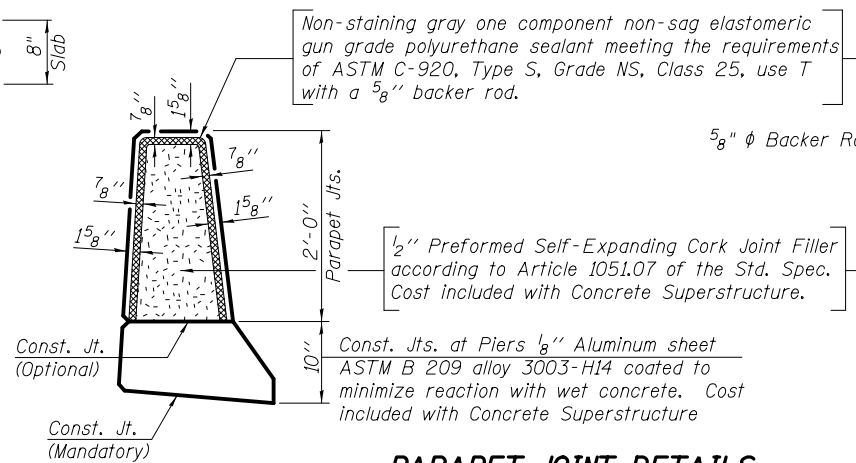


PLAN AT DRAINAGE SCUPPER, DS-11

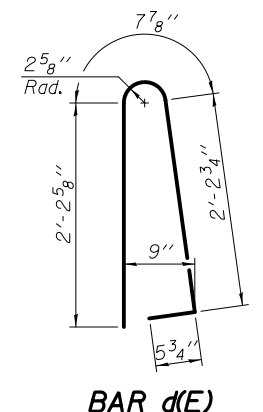
Note:
Cut longitudinal reinforcement to clear drainage scuppers.



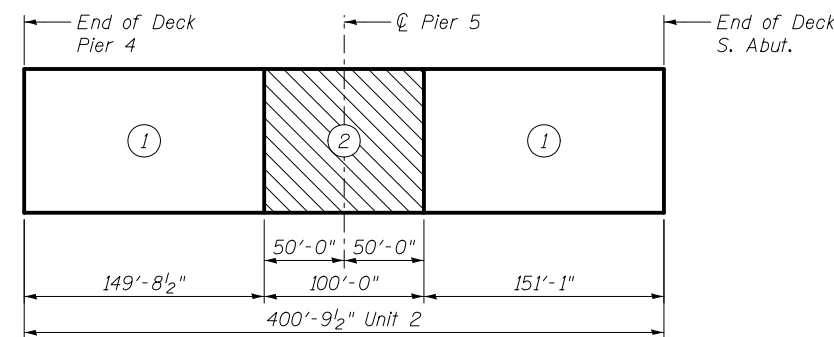
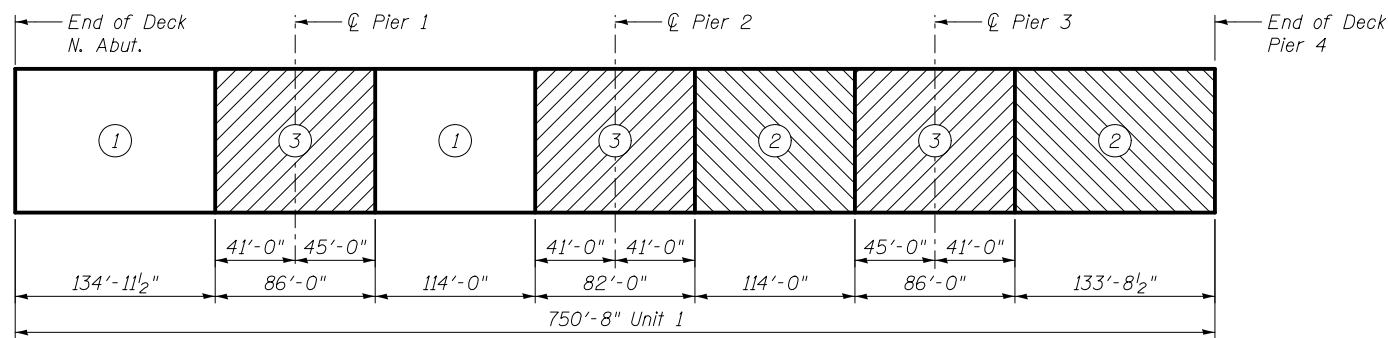
BAR d1(E)



PARAPET JOINT DETAILS



BAR d(E)



DECK POUR SEQUENCE

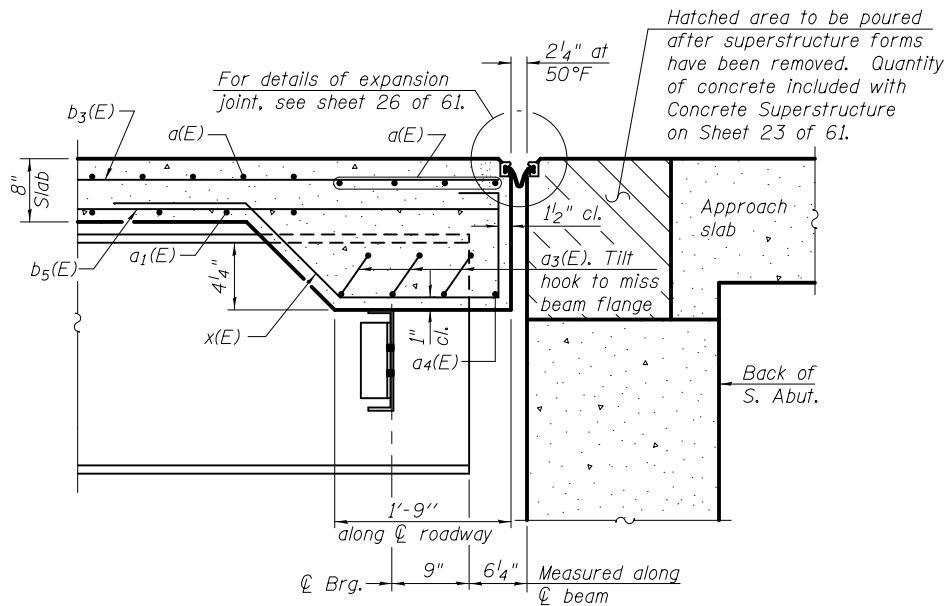
Notes:

- When the deck pour is stopped for the day at one or more of the transverse bonded construction joints in the deck pouring sequence as shown, the next pour shall not be made until both of the following are met:
 - At least 72 hours shall have elapsed from the end of the previous pour.
 - The concrete strength shall have attained a minimum flexural strength of 650 psi or a minimum compressive strength of 3500 psi.

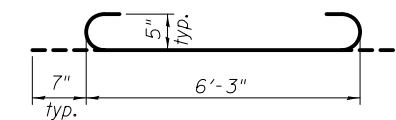
The Contractor is alerted that camber and dead load deflection values shown on the girder detail drawings were developed based on the deck pouring sequence shown. Any deviation from this pouring sequence will result in changes to camber and elevations that reflect dead load deflections. If the Contractor wishes to change the sequence, then the proposed plan revisions and design calculations shall be submitted to the Engineer for review and approval. The calculations shall be prepared and sealed by a Licensed Structural Engineer in Illinois.

SUPERSTRUCTURE BILL OF MATERIAL

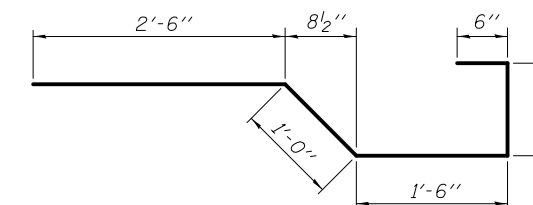
Bar	No.	Size	Length	Shape
a(E)	1975	#5	38'-7"	—
a1(E)	1380	#5	38'-4"	—
a2(E)	3950	#6	6'-6"	—
a3(E)	15	#5	7'-5"	⌋
a4(E)	1	#5	32'-2"	—
a5(E)	192	#5	1'-6"	—
b(E)	1176	#5	30'-0"	—
b1(E)	351	#6	35'-8"	—
b2(E)	1044	#5	29'-1"	—
b3(E)	630	#5	29'-9"	—
b4(E)	156	#6	29'-5"	—
b5(E)	576	#5	28'-1"	—
d(E)	2516	#5	5'-7"	⌋
d1(E)	2516	#5	7'-7"	⌋
e(E)	744	#4	19'-8"	—
e1(E)	14	#4	15'-10"	—
e2(E)	14	#4	14'-6"	—
e3(E)	14	#4	19'-6"	—
e4(E)	56	#4	14'-11"	—
e5(E)	20	#8	35'-4"	—
e6(E)	16	#8	19'-8"	—
e7(E)	20	#8	36'-1"	—
e8(E)	24	#8	34'-5"	—
e9(E)	52	#4	27'-8"	—
e10(E)	24	#4	28'-3"	—
x(E)	35	#5	6'-5"	⌋
Concrete Superstructure		Cu. Yds.	1,455.0	
Bridge Deck Grooving		Sq. Yds.	4,606	
Protective Coat		Sq. Yds.	5,571	
Reinforcement Bars, Epoxy Coated		Pound	358,110	



SECTION A-A



a3(E) BAR



BAR x(E)



USER NAME =	DESIGNED - RLM	REVISED
	CHECKED - JTH	REVISED
PLOT SCALE =	DRAWN - PRC	REVISED
PLOT DATE = 2/1/2013	CHECKED - RLM	REVISED

STATE OF ILLINOIS
DEPARTMENT OF TRANSPORTATION

SUPERSTRUCTURE DETAILS - 2
STRUCTURE NO. 014-0033

SHEET NO. 17 OF 61 SHEETS

F.A.P. RTE.	SECTION	COUNTY	TOTAL SHEETS	SHEET NO.
42	1-1BR-2	CLINTON	159	86
CONTRACT NO. 76479				
ILLINOIS FED. AID PROJECT				