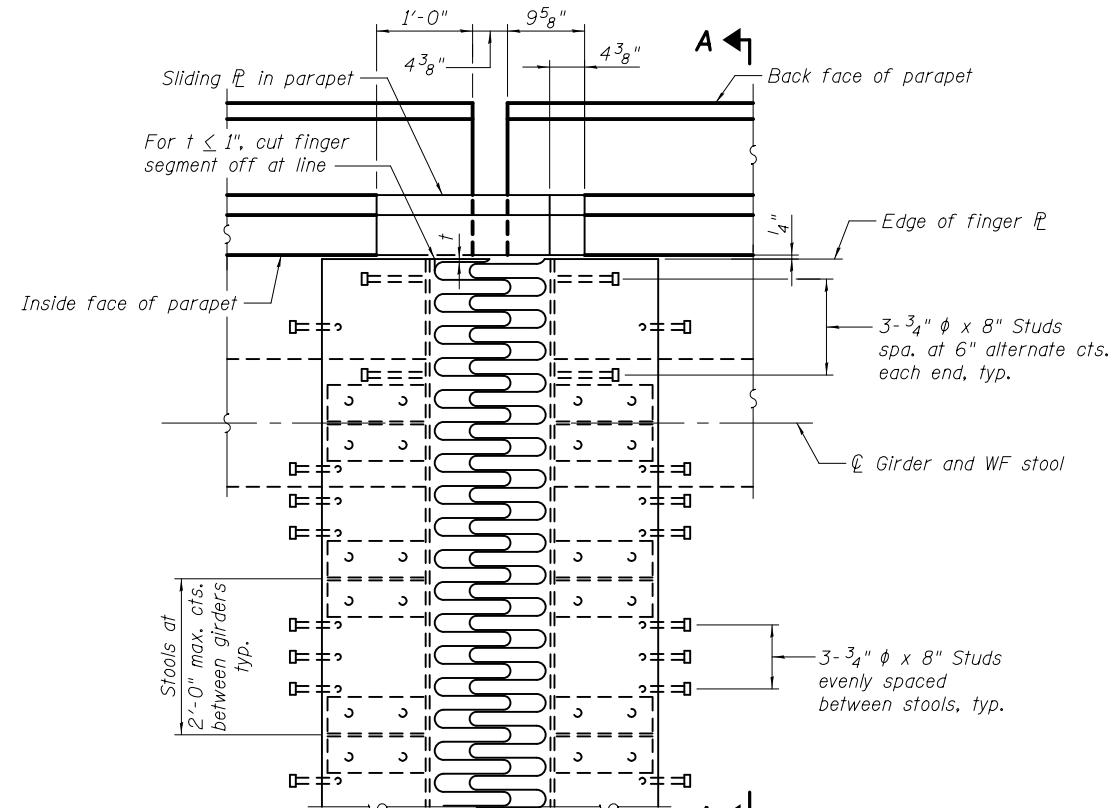
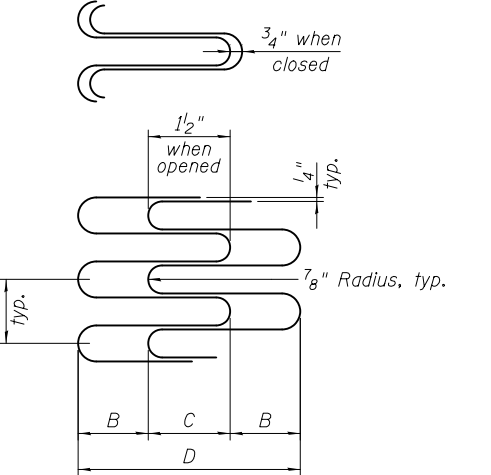


PLAN AT NORTH ABUTMENT
(Finger Plate Expansion Joint, 3")



PLAN AT PIER 4
(Finger Plate Expansion Joint, 4")

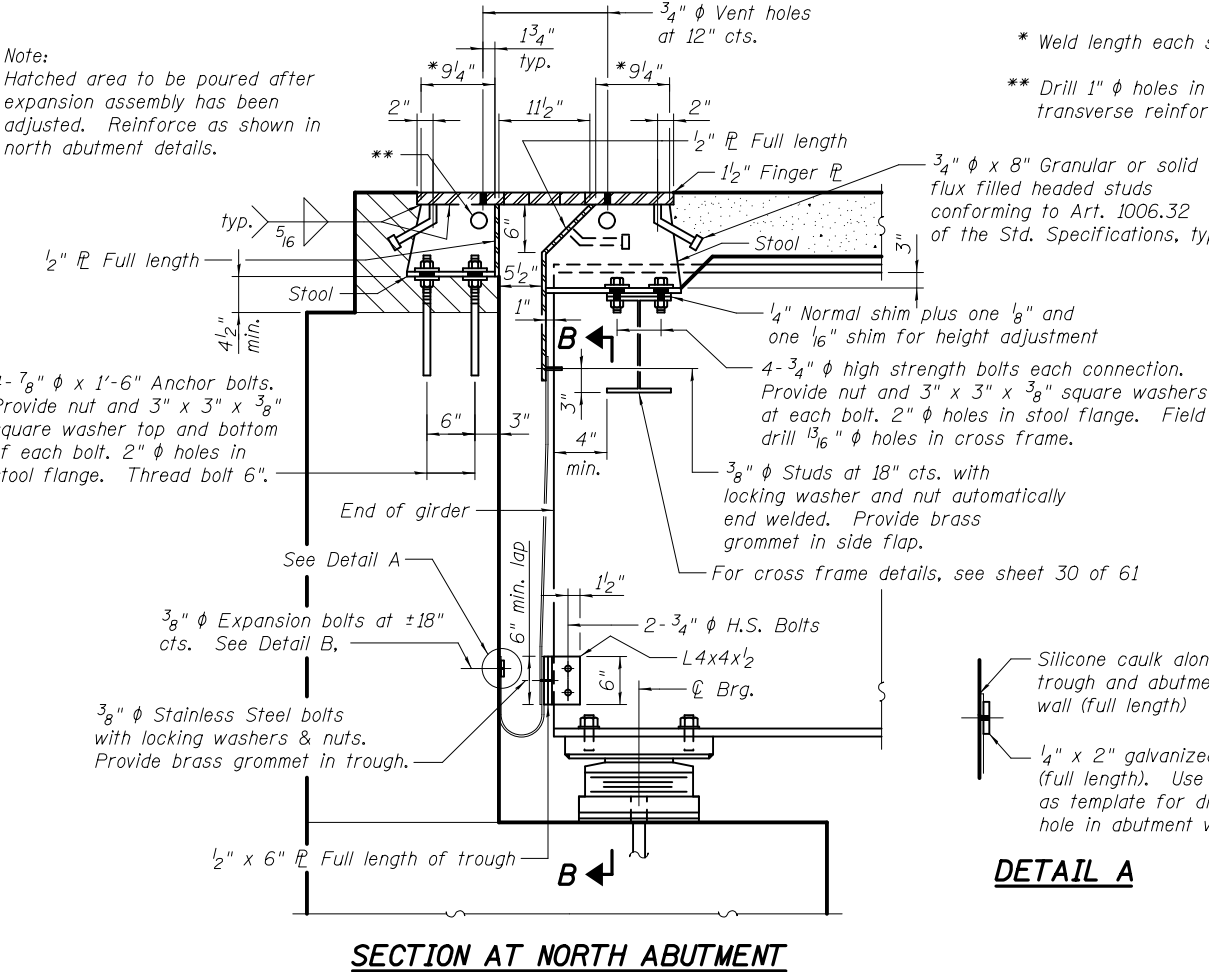


FINGER PLATE DETAIL

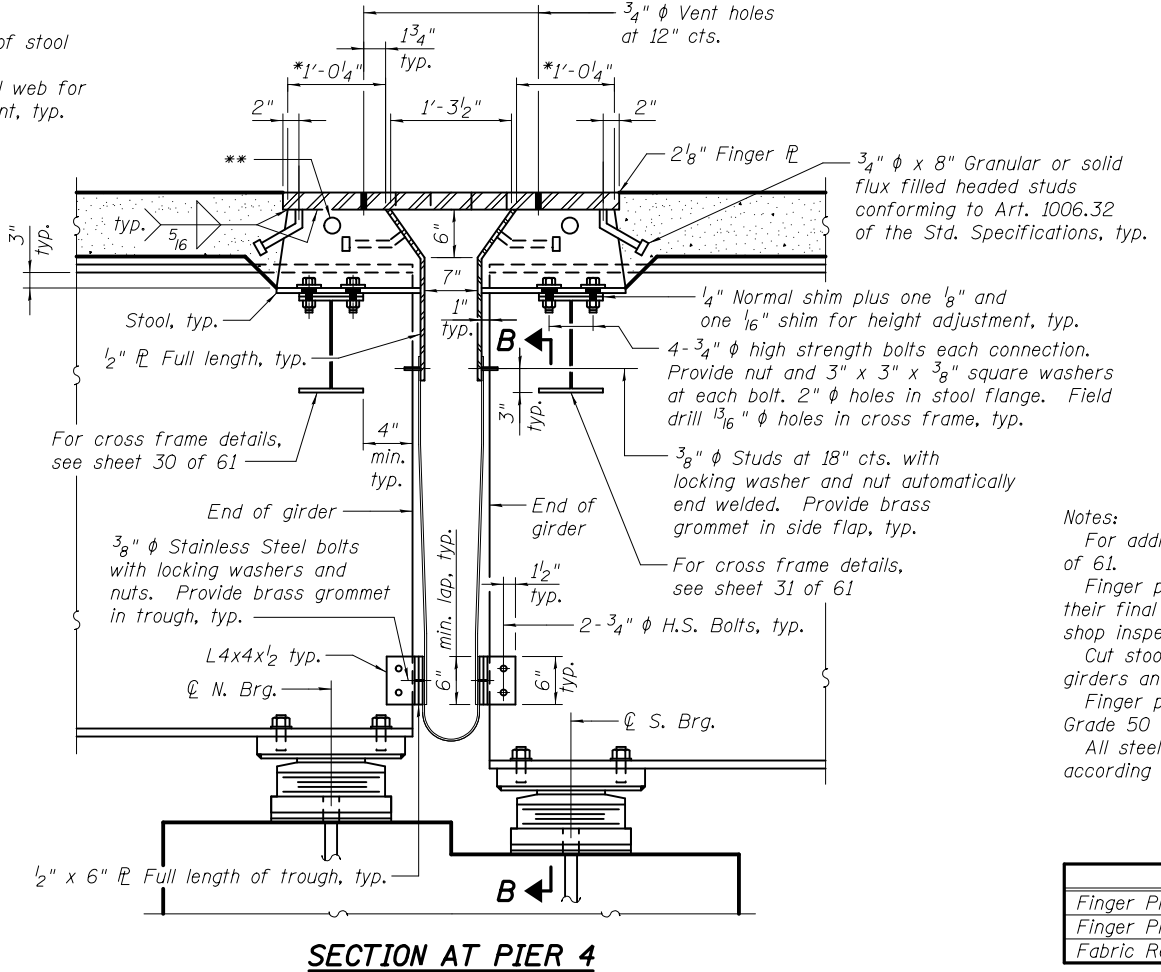
TABLE OF DIMENSIONS

LOCATION	A	B	C	D
N. Abut.	4"	3 3/8"	3 7/8"	10 1/8"
Pier 4	4"	4 3/8"	5 1/8"	13 7/8"

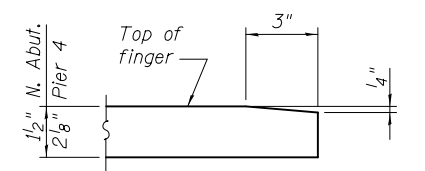
Note: Dimensions at normal temperature.



DETAIL A



SECTION AT PIER 4



FINGER BEVEL DETAIL

Notes:
 For additional details and sections, see Sheet 25 of 61.
 Finger plate expansion joints shall be assembled in their final relative position with the ends in place for shop inspection and acceptance.
 Cut stools from WF sections. Space evenly between girders and on top of girders.
 Finger plate expansion joints shall be AASHTO M270 Grade 50 (NTR).
 All steel components shall be galvanized after fabrication according to Article 520.03 of the Standard Specifications.

BILL OF MATERIAL

Item	Unit	Total
Finger Plate Expansion Joint, 3"	Foot	36
Finger Plate Expansion Joint, 4"	Foot	36
Fabric Reinforced Elastomeric Trough	Foot	84



USER NAME =	DESIGNED - JTH	REVISED
PLOT SCALE =	CHECKED - RLM	REVISED
PLOT DATE = 2/1/2013	DRAWN - PRC	REVISED
	CHECKED - JTH	REVISED

STATE OF ILLINOIS
DEPARTMENT OF TRANSPORTATION

FINGER PLATE EXPANSION JOINT - 1
STRUCTURE NO. 014-0033

SHEET NO. 24 OF 61 SHEETS

F.A.P. RTE. 42	SECTION 1-1BR-2	COUNTY CLINTON	TOTAL SHEETS 159	SHEET NO. 93
ILLINOIS FED. AID PROJECT			CONTRACT NO. 76479	