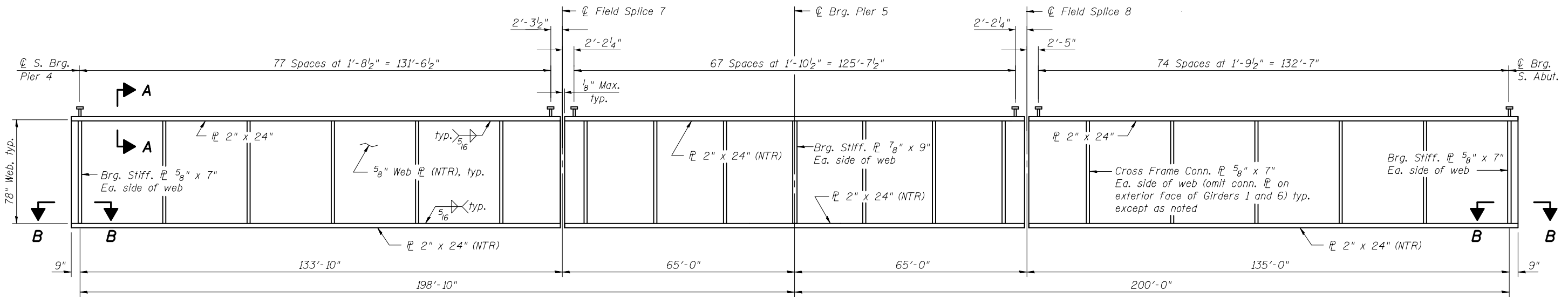
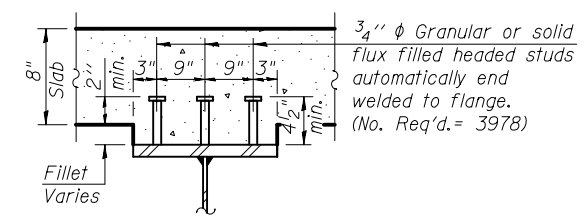


FRAMING PLAN - UNIT 2

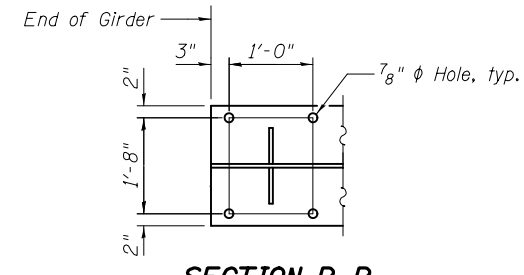


GIRDER ELEVATION - UNIT 2

Interior girders shown, exterior girders similar.
(Looking East, 6 required)



SECTION A-A



SECTION B-B

Section at Pier 4 shown,
Section at South abutment similar

Notes:
Load carrying components designated "NTR" shall conform to the Impact Testing Requirement, Zone 2.
All flange plates, web plates, bearing stiffeners, and cross frame connection plates shall be AASHTO M270 Grade 50.
See sheets 31, 32 and 33 of 61 for steel details.



USER NAME =	DESIGNED - RLM	REVISED
	CHECKED - JTH	REVISED
PLOT SCALE =	DRAWN - PRC	REVISED
PLOT DATE = 2/1/2013	CHECKED - RLM	REVISED

STATE OF ILLINOIS
DEPARTMENT OF TRANSPORTATION

STEEL FRAMING PLAN - UNIT 2
STRUCTURE NO. 014-0033

SHEET NO. 29 OF 61 SHEETS

F.A.P. RTE.	SECTION	COUNTY	TOTAL SHEETS	SHEET NO.
42	1-1BR-2	CLINTON	159	98
CONTRACT NO. 76479				

ILLINOIS FED. AID PROJECT