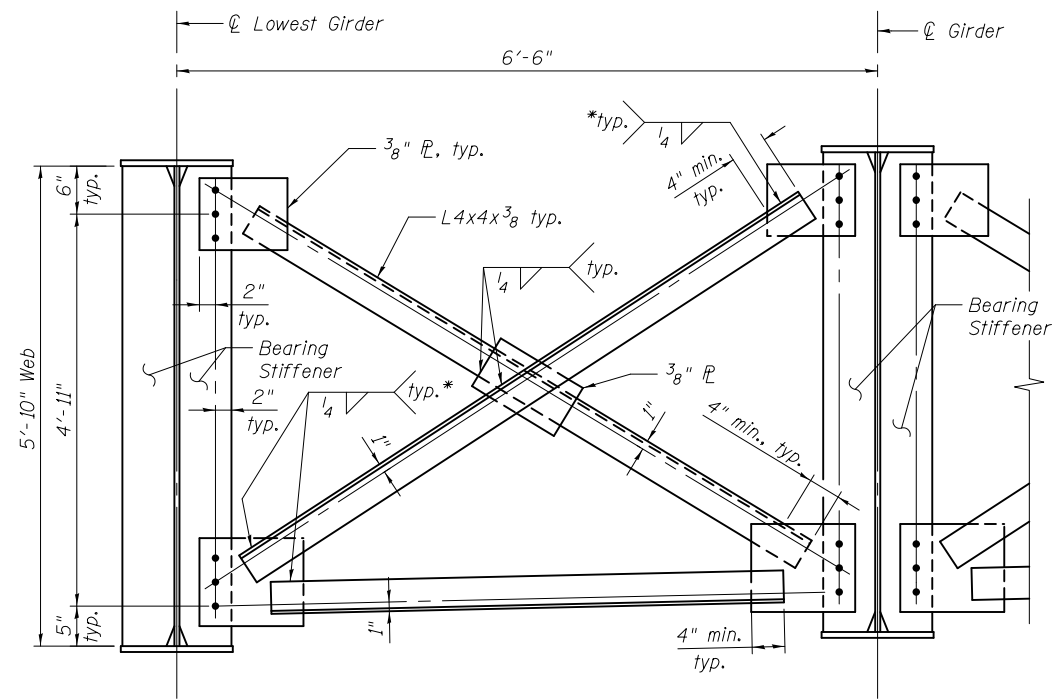
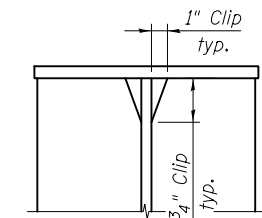


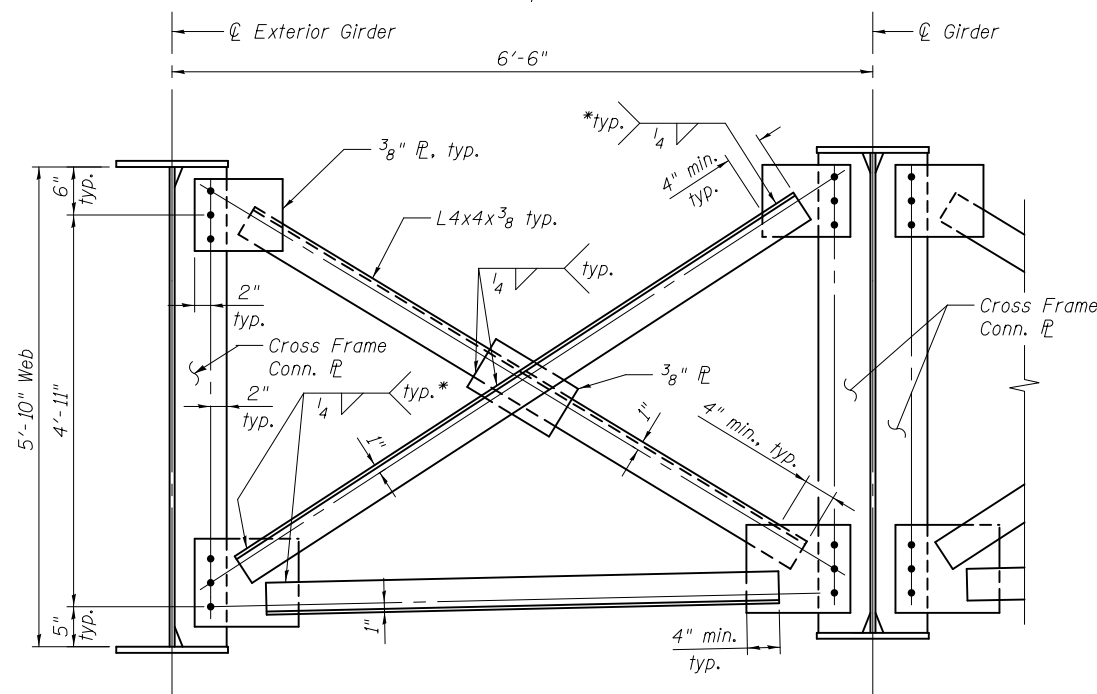
***** TYPE 1 CROSS FRAME**
(10 Required)



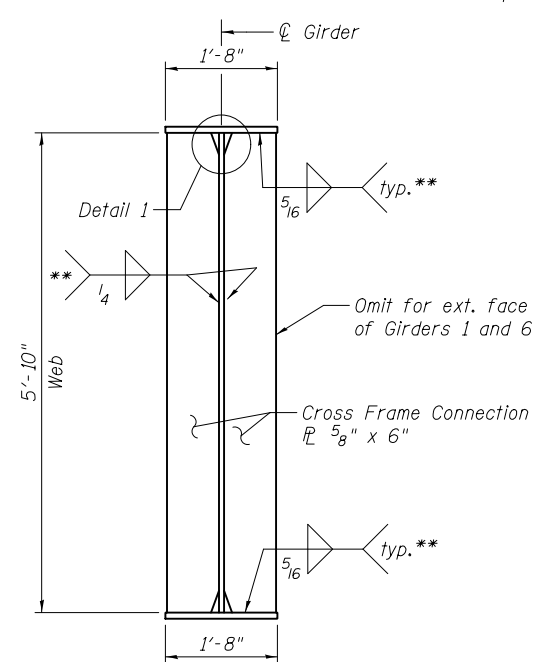
TYPE 3 CROSS FRAME
(15 Required)



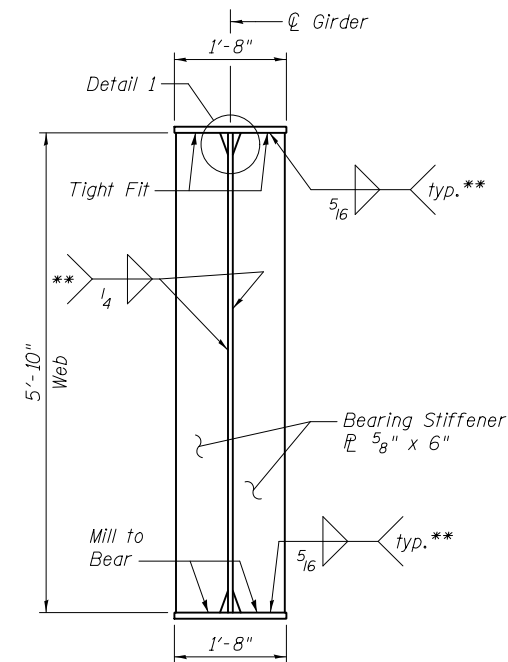
DETAIL 1
(Typical top & bottom flanges)



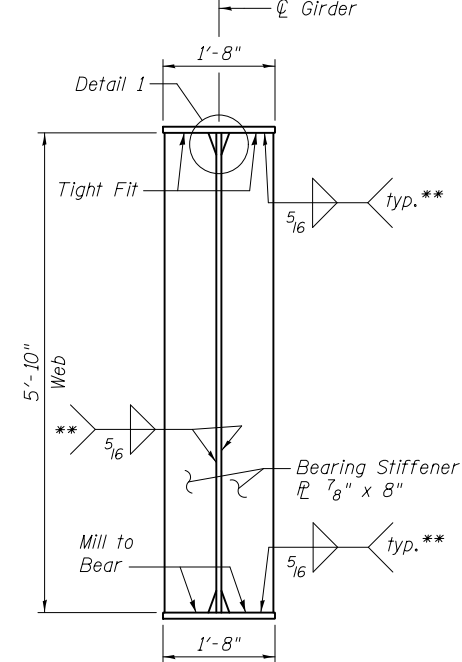
TYPE 2 CROSS FRAME
(150 Required)



CONNECTION PLATE DETAIL
Use with Type 2 Cross Frame



**BEARING STIFFENER AT
N. ABUT. AND PIER 4 (N. BRG.)**
Use with Type 1 Cross Frame



**BEARING STIFFENER AT
PIERS 1, 2 AND 3**
Use with Type 3 Cross Frame

- * Fillet weld angles along 3 sides on one face of gusset plate.
- ** Terminate weld 1/4" from edges of stiffener and connection PL.
- *** Steel components shall be hot dip galvanized after fabrication according to AASHTO M111 and ASTM A385.

Notes:
All cross frames shall be installed as steel is erected and secured with erection pins and bolts except as otherwise noted. Individual cross frames at supports may be temporarily disconnected to install bearing anchor rods.
Bolts for cross frame connections shall be 3/4" φ, holes 15/16" φ. Two hardened washers required for each set of oversized holes.



USER NAME =	DESIGNED - RLM	REVISED
	CHECKED - JTH	REVISED
PLOT SCALE =	DRAWN - PRC	REVISED
PLOT DATE = 2/1/2013	CHECKED - RLM	REVISED

STATE OF ILLINOIS
DEPARTMENT OF TRANSPORTATION

STEEL DETAILS - UNIT 1
STRUCTURE NO. 014-0033

SHEET NO. 30 OF 61 SHEETS

F.A.P. RTE.	SECTION	COUNTY	TOTAL SHEETS	SHEET NO.
42	1-1BR-2	CLINTON	159	99
CONTRACT NO. 76479				
ILLINOIS FED. AID PROJECT				