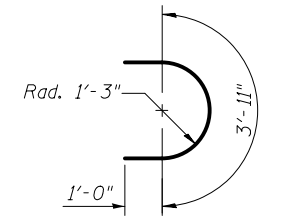


BAR u300(E)

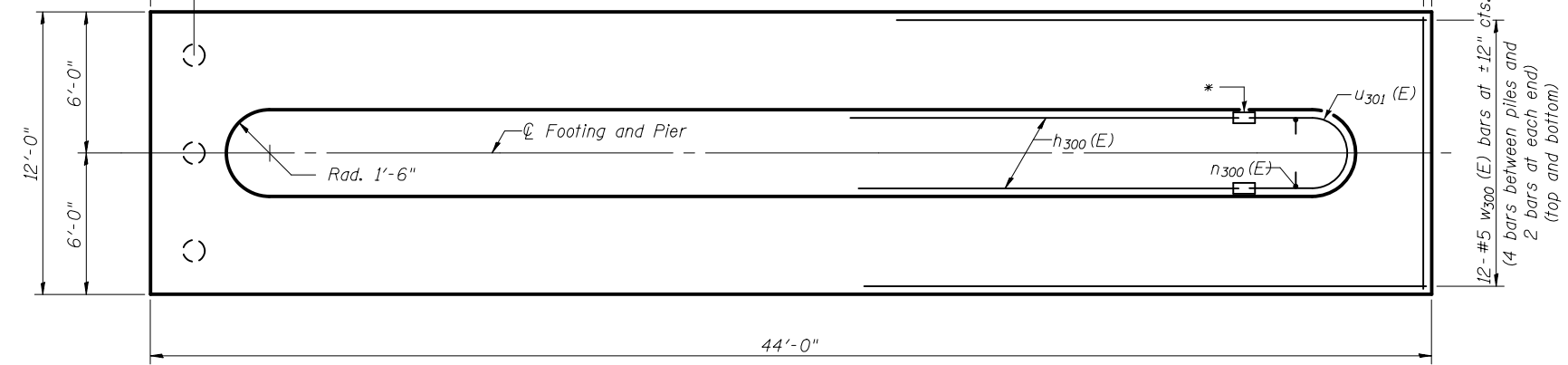


BAR u301(E)

**PIER 3
BILL OF MATERIAL**

Bar	No.	Size	Length	Shape
n ₃₀₀ (E)	32	#6	33'-8"	—
n ₃₀₀ (E)	80	#8	15'-5"	⌋
s ₃₀₀ (E)	36	#4	8'-6"	⌋
s ₃₀₁ (E)	288	#4	3'-9"	⌋
t ₃₀₀ (E)	116	#8	11'-6"	—
u ₃₀₀ (E)	16	#6	10'-7"	⌋
u ₃₀₁ (E)	14	#6	5'-11"	⌋
w ₃₀₀ (E)	28	#5	43'-6"	—
Structure Excavation		Cu. Yd.	143	
Concrete Structures		Cu. Yd.	111.0	
Reinforcement Bars, Epoxy Coated		Pound	11,050	
Mechanical Splicers		Each	28	

* Mechanical splice h₃₀₀(E) bars to u₃₀₁(E) bars



FOOTING PLAN

END VIEW

PILE DATA

Type: 9⁵/₈" Micropile
For details of micropiles and tension micropiles, see sheet 47, 48, and 49 of 61.

Notes:
Space reinforcement in cap to miss anchor bolts.
Pour steps monolithically with cap.
See sheet 36 of 61 for anchor bolt layout and spacing.



USER NAME =	DESIGNED - MJP	REVISED
	CHECKED - ACK	REVISED
PLOT SCALE =	DRAWN - PRC	REVISED
PLOT DATE = 2/1/2013	CHECKED - MJP	REVISED

**STATE OF ILLINOIS
DEPARTMENT OF TRANSPORTATION**

**PIER 3
STRUCTURE NO. 014-0033**

SHEET NO. 43 OF 61 SHEETS

F.A.P. RTE.	SECTION	COUNTY	TOTAL SHEETS	SHEET NO.
42	1-1BR-2	CLINTON	159	112
CONTRACT NO. 76479				
ILLINOIS FED. AID PROJECT				