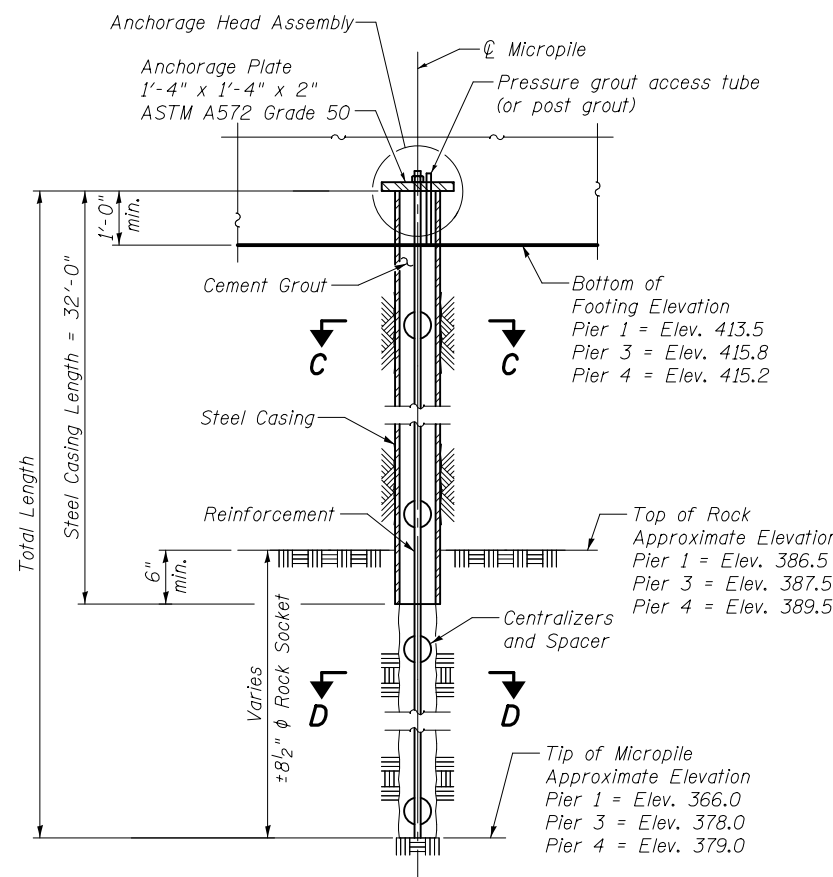
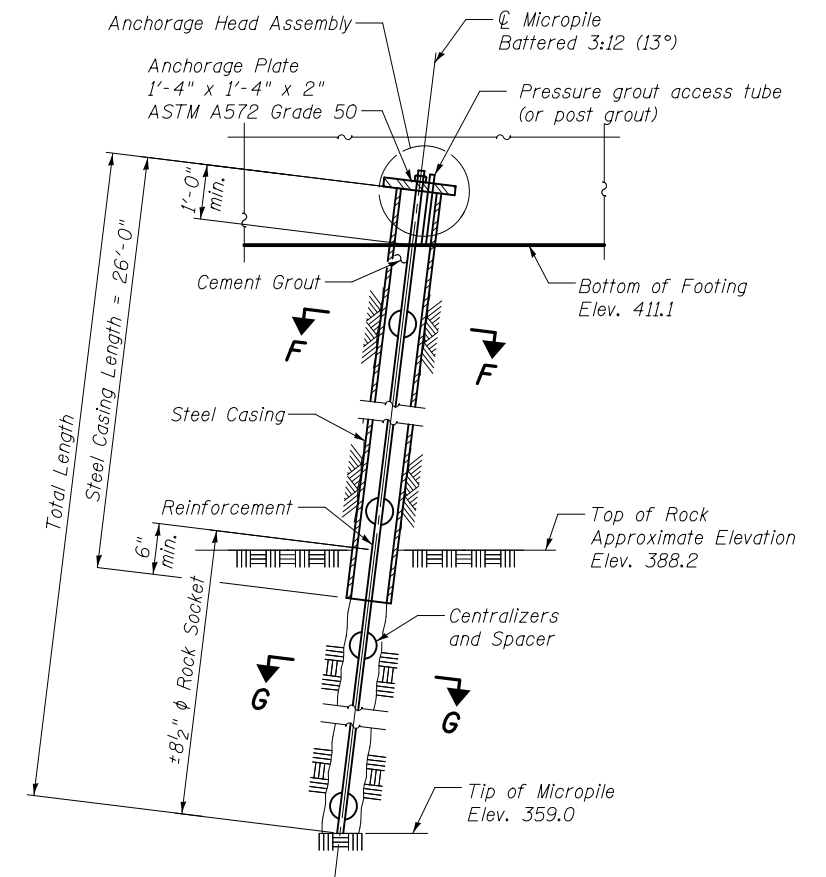


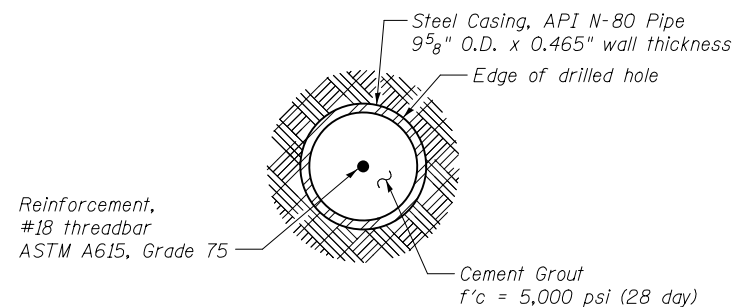
MICROPILE DETAIL - M1
371k maximum compression design load



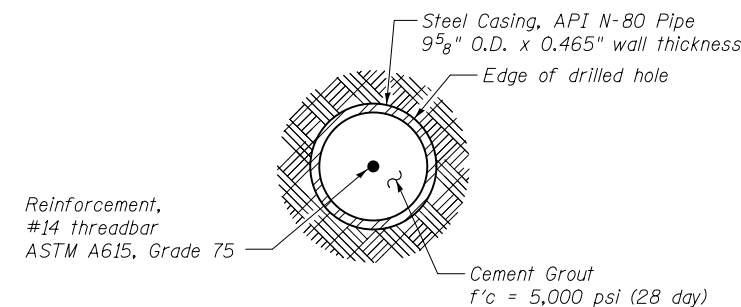
MICROPILE DETAIL - M2
310k maximum compression design load



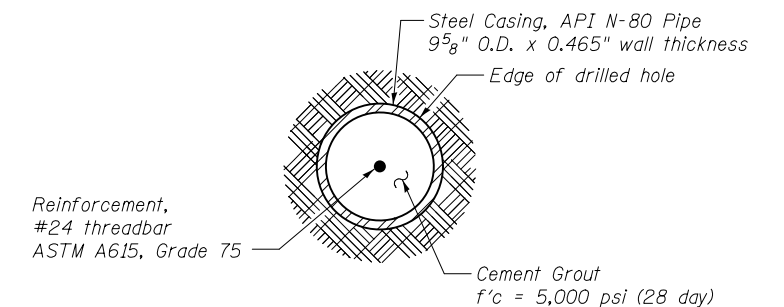
MICROPILE DETAIL - M3
555k maximum compression design load
210k maximum tension design load



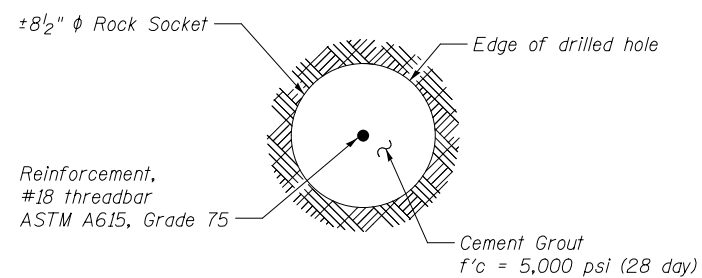
SECTION A-A



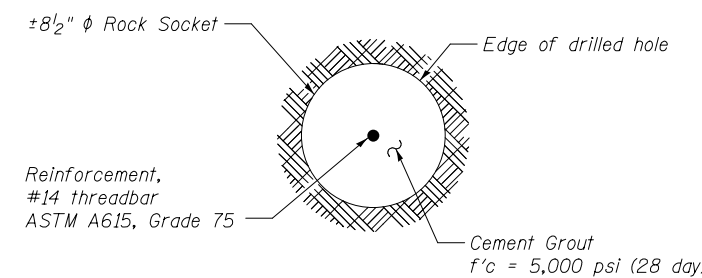
SECTION C-C



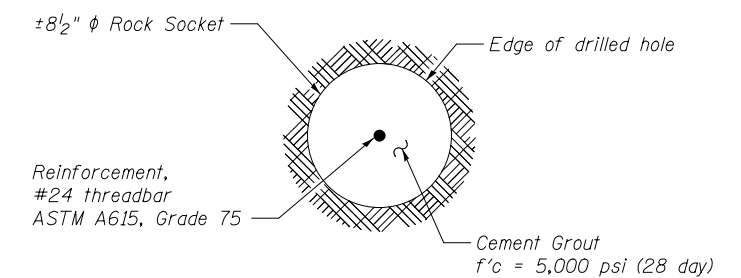
SECTION F-F



SECTION B-B



SECTION D-D



SECTION G-G

BILL OF MATERIAL

Item	Unit	Total
Micro-piles	Each	94
Micropile Proof Load Test	Each	4
Tension Micropiles	Each	48
Tension Micropile Load Test	Each	4

Note:
Steel casing shall not be spliced within 10 feet of the top of the pile. Splices shall be capable of developing the full moment capacity of the Steel Casing.



USER NAME =	DESIGNED - ACK	REVISED
	CHECKED - MJP	REVISED
PLOT SCALE =	DRAWN - PRC	REVISED
PLOT DATE = 2/1/2013	CHECKED - ACK	REVISED

STATE OF ILLINOIS
DEPARTMENT OF TRANSPORTATION

MICROPILE DETAILS - 2
STRUCTURE NO. 014-0033

SHEET NO. 48 OF 61 SHEETS

F.A.P. RTE.	SECTION	COUNTY	TOTAL SHEETS	SHEET NO.
42	1-1BR-2	CLINTON	159	117
CONTRACT NO. 76479				
ILLINOIS FED. AID PROJECT				