

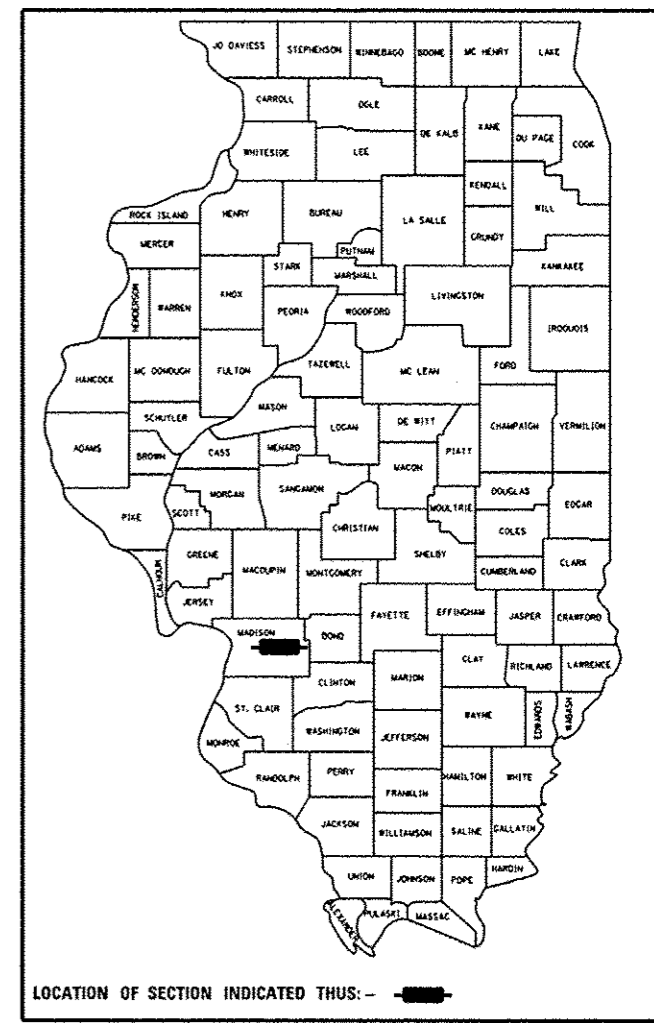
STATE OF ILLINOIS
 DEPARTMENT OF TRANSPORTATION
 DIVISION OF HIGHWAYS
**PROPOSED
 HIGHWAY PLANS**

FAP ROUTE 310 (IL 255)
 SECTION 60-(9,10,11)RS-1
 MICROSURFACING
 PROJECT F-0310(151)
 MADISON COUNTY

C-98-080-12

F.A.S. RTE.	SECTION	COUNTY	TOTAL SHEETS	SHEET NO.
310	60-(9,10,11)RS-1	MADISON	21	1
		ILLINOIS	CONTRACT NO. 76F87	

D-98-072-12



INDEX OF SHEETS

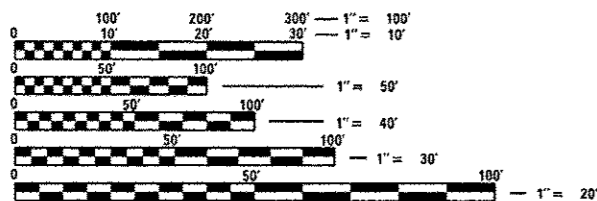
- 1 COVER SHEET
- 2 GENERAL NOTES
- 3 SUMMARY OF QUANTITIES
- 4 TYPICAL SECTIONS
- 5 - 6 SCHEDULE OF QUANTITIES
- 7 - 20 PLAN SHEETS
- 21 DETAILS

HIGHWAY STANDARDS

- 000001-06
- 001006
- 701400-06
- 701401-07
- 701411-08
- 701456-02
- 701901-02

COMMITMENTS

NONE

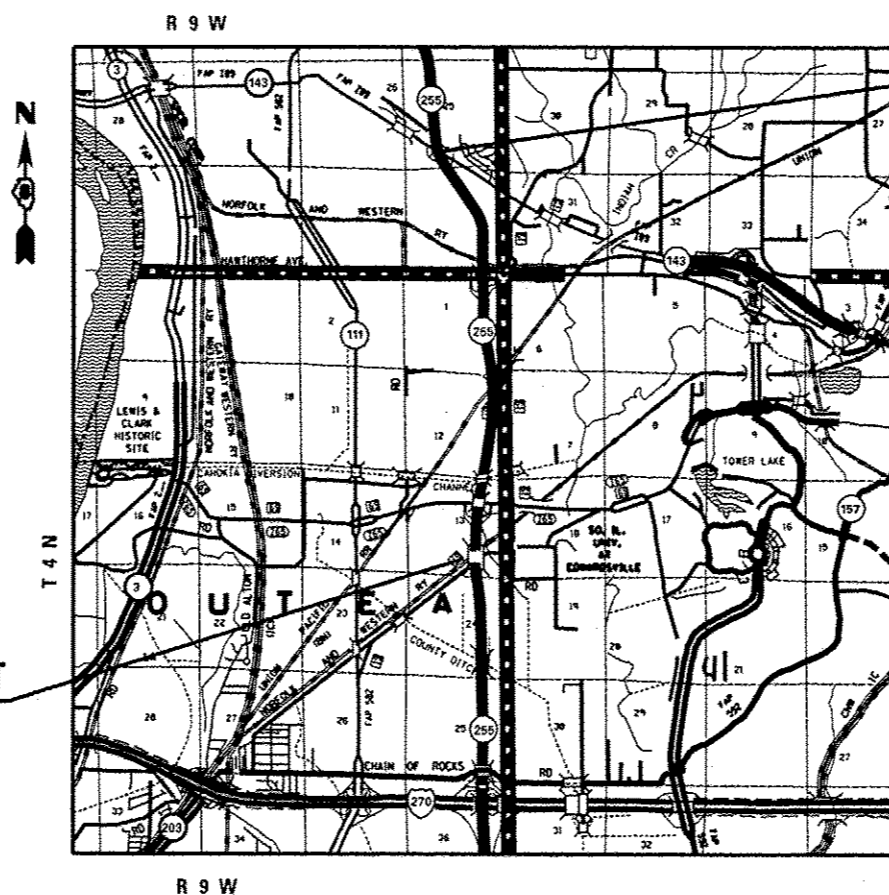


FULL SIZE PLANS HAVE BEEN PREPARED USING STANDARD ENGINEERING SCALES. REDUCED SIZED PLANS WILL NOT CONFORM TO STANDARD SCALES. IN MAKING MEASUREMENTS ON REDUCED PLANS, THE ABOVE SCALES MAY BE USED.

J.U.L.I.E.
 JOINT UTILITY LOCATION INFORMATION FOR EXCAVATION
 1-800-892-0123
 OR 811

PROJECT ENGINEER: TIM PADGETT (618)346-3325
 PROJECT MANAGER: LIZ BURNSIDE (618)346-3196

CONTRACT NO. 76F87



**BEGIN PROJECT
 STA. 1748 + 87**

**END PROJECT
 STA. 1964 + 37**

GROSS LENGTH = 21,550 FT. = 4.08 MILE
 NET LENGTH = 20,156 FT. = 3.82 MILE

STATE OF ILLINOIS
 DEPARTMENT OF TRANSPORTATION
 DIVISION OF HIGHWAYS

SUBMITTED *December 13 20 12*
[Signature]
 DEPUTY DIRECTOR OF HIGHWAYS, REGION ENGINEER

March 22 20 13
John D. Baranzelli, P.E.
 ENGINEER OF DESIGN AND ENVIRONMENT

March 22 20 13
Onor Osman, P.E.
 DIRECTOR OF HIGHWAYS, CHIEF ENGINEER

**PRINTED BY THE AUTHORITY
 OF THE STATE OF ILLINOIS**