

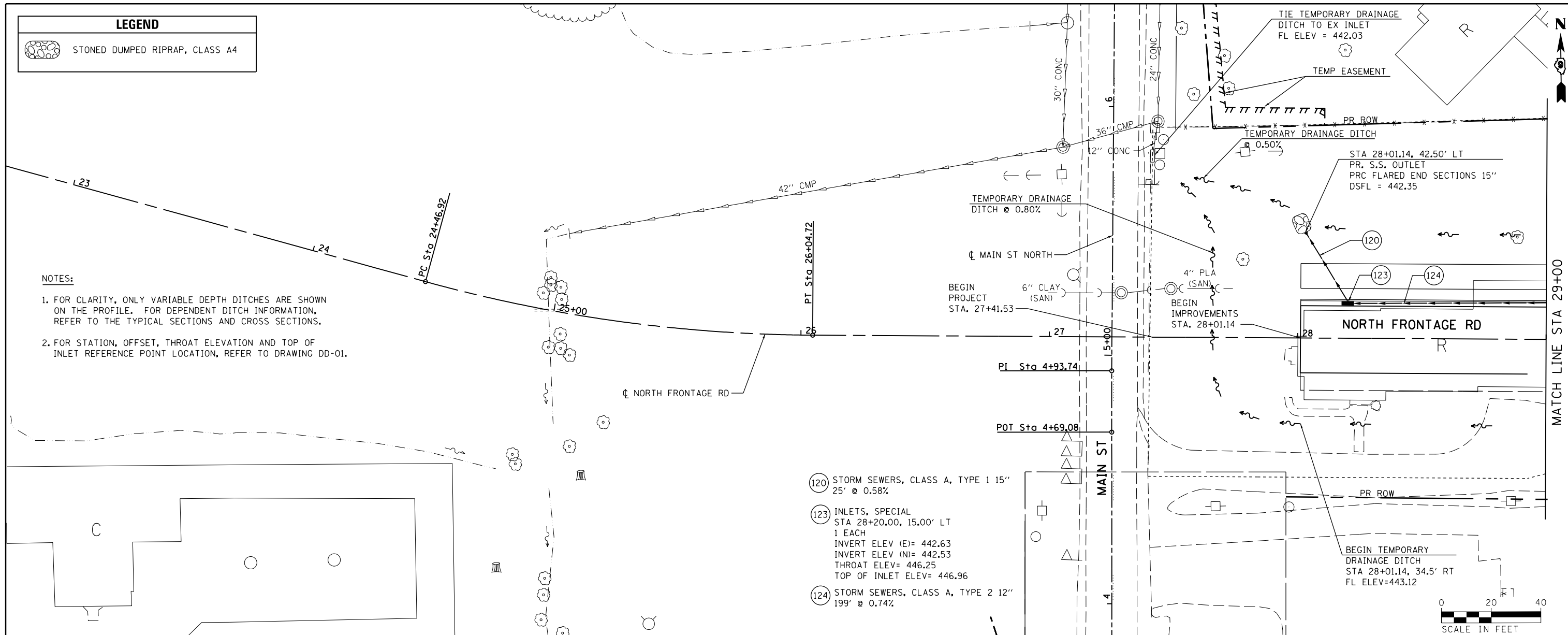
**LEGEND**

 STONED DUMPED RIPRAP, CLASS A4

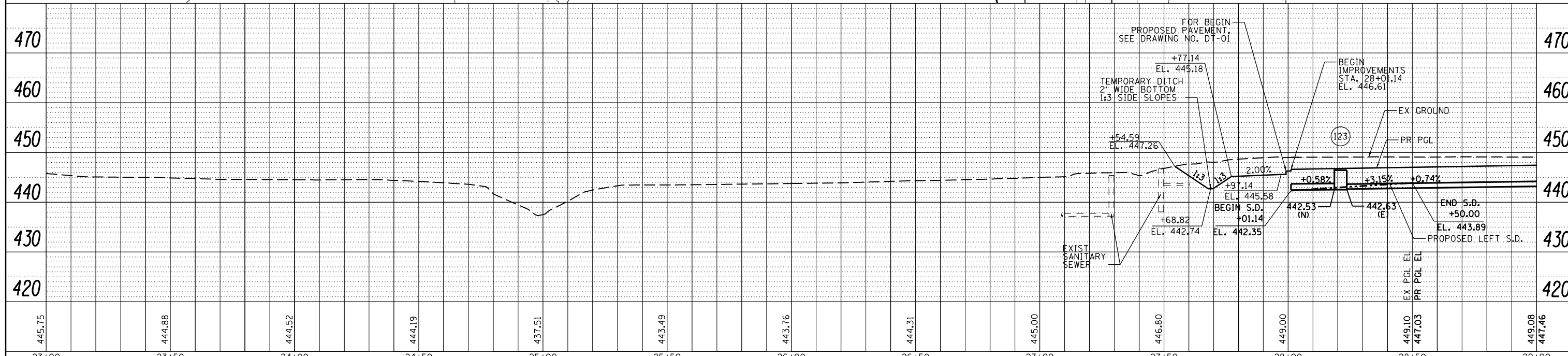
PLAN	SURVEYED	DATE
	PLOTTED	
	GRADES CHECKED	
	STRUCTURE NOTATIONS CHECKED	
	NOTE BOOK NO.	
	FILE NAME	

PROFILE	SURVEYED	DATE
	PLOTTED	
	GRADES CHECKED	
	STRUCTURE NOTATIONS CHECKED	
	NOTE BOOK NO.	
	FILE NAME	

- NOTES:**
- FOR CLARITY, ONLY VARIABLE DEPTH DITCHES ARE SHOWN ON THE PROFILE. FOR DEPENDENT DITCH INFORMATION, REFER TO THE TYPICAL SECTIONS AND CROSS SECTIONS.
  - FOR STATION, OFFSET, THROAT ELEVATION AND TOP OF INLET REFERENCE POINT LOCATION, REFER TO DRAWING DD-01.



- (120) STORM SEWERS, CLASS A, TYPE 1 15" 25' @ 0.58%
- (123) INLETS, SPECIAL STA 28+20.00, 15.00' LT 1 EACH INVERT ELEV (E)= 442.63 INVERT ELEV (N)= 442.53 THROAT ELEV= 446.25 TOP OF INLET ELEV= 446.96
- (124) STORM SEWERS, CLASS A, TYPE 2 12" 199' @ 0.74%



FILE NAME =	USER NAME = \$USER*	DESIGNED - CK	REVISED -	<b>STATE OF ILLINOIS DEPARTMENT OF TRANSPORTATION</b>	<b>DRAINAGE AND UTILITIES SHEETS NORTH FRONTAGE ROAD</b>		F.A.P. RT. =	SECTION	COUNTY	TOTAL SHEETS	SHEET NO.
c:\pwork\pwork\collem\0265445\097825\shst-drain-01.dgn	DRWN - MP	DRAWN - MP	REVISED -		331	(1-3)R-3	WILLIAMSON	58	29		
<b>CH2MHILL</b>	PLOT SCALE = 40.0000' / in.	CHECKED - DM	REVISED -		SCALE: SHEET NO. 1 OF 5 SHEETS STA. 28+01.14 TO STA. 29+00.00		DRAWING NO. CONTRACT NO. 78259		ILLINOIS FED. AID PROJECT		
	PLOT DATE = 2/22/2013	DATE - 7/6/2012	REVISED -								