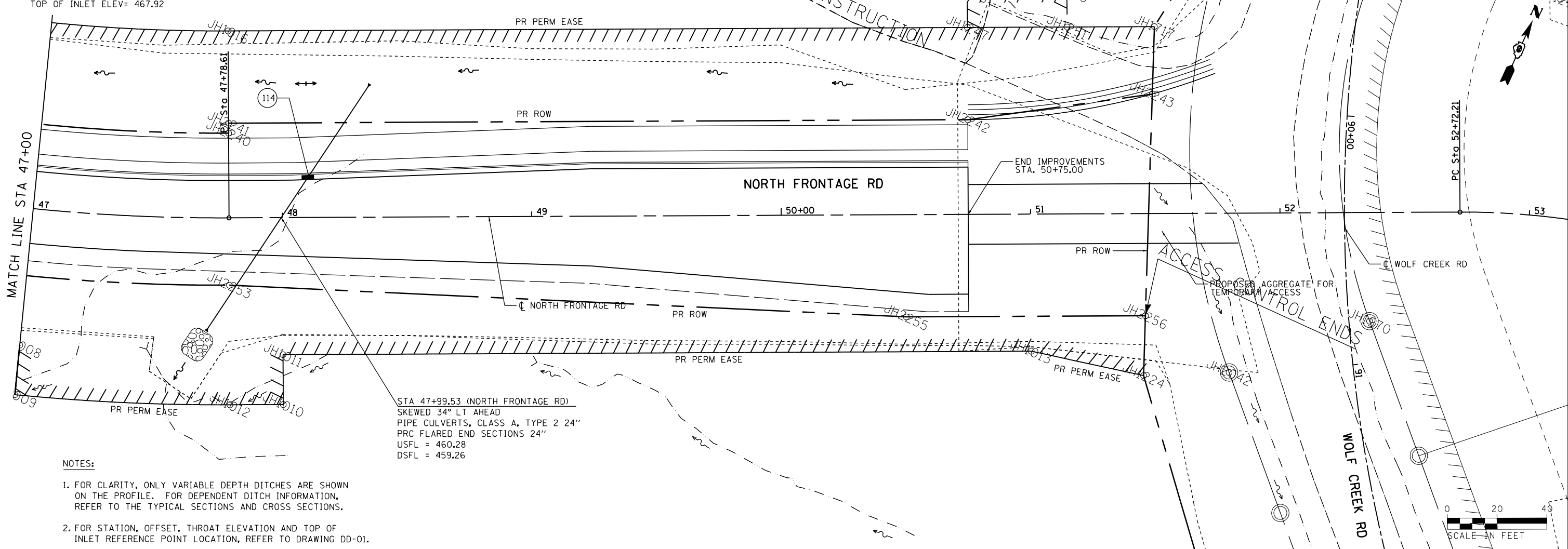


114 INLETS, SPECIAL  
 STA 48+11.94, 17.21' LT  
 1 EACH  
 INVERT ELEV (N)= 459.91  
 INVERT ELEV (S)= 459.91  
 THROAT ELEV= 467.15  
 TOP OF INLET ELEV= 467.92

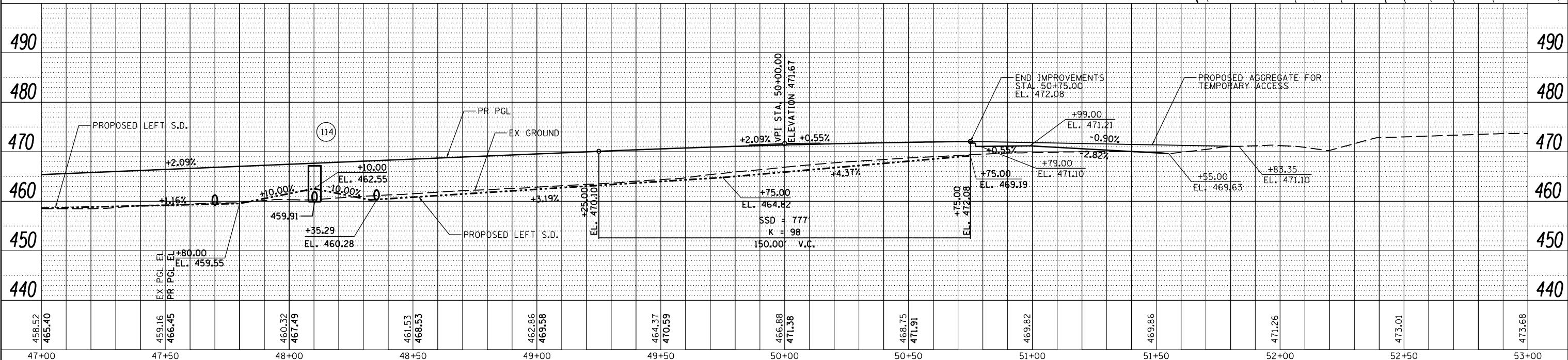
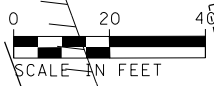
PLAN	SURVEYED	DATE
	PLOTTED	
	ALIGNED	
	CHECKED	
	DATE	
	BY	
	NO.	

PROFILE	SURVEYED	DATE
	PLOTTED	
	GRADES	
	CHECKED	
	STRUCTURE	
	NOTATIONS	
	CHK'D	
	NO.	



STA 47+99.53 (NORTH FRONTAGE RD)  
 SKEWED 34° LT AHEAD  
 PIPE CULVERTS, CLASS A, TYPE 2 24"  
 PRC FLARED END SECTIONS 24"  
 USFL = 460.28  
 DSFL = 459.26

- NOTES:
- FOR CLARITY, ONLY VARIABLE DEPTH DITCHES ARE SHOWN ON THE PROFILE. FOR DEPENDENT DITCH INFORMATION, REFER TO THE TYPICAL SECTIONS AND CROSS SECTIONS.
  - FOR STATION, OFFSET, THROAT ELEVATION AND TOP OF INLET REFERENCE POINT LOCATION, REFER TO DRAWING DD-01.



FILE NAME =	USER NAME = \$USER*	DESIGNED - CK	REVISED -
c:\pwork\psidot\coltem\d0265445\097825\sheet-draw-05.dgn		DRAWN - MP	REVISED -
		CHECKED - DM	REVISED -
		DATE - 7/6/2012	REVISED -



**STATE OF ILLINOIS  
 DEPARTMENT OF TRANSPORTATION**

**DRAINAGE AND UTILITIES SHEETS  
 NORTH FRONTAGE ROAD**

F.A.P. RTE.	SECTION	COUNTY	TOTAL SHEETS	SHEET NO.
331	(1-3)R-3	WILLIAMSON	58	33
DRAWING NO.		CONTRACT NO. 78259		
ILLINOIS FED. AID PROJECT				

SCALE: SHEET NO. 5 OF 5 SHEETS STA. 47+00.00 TO STA. 50+75.00