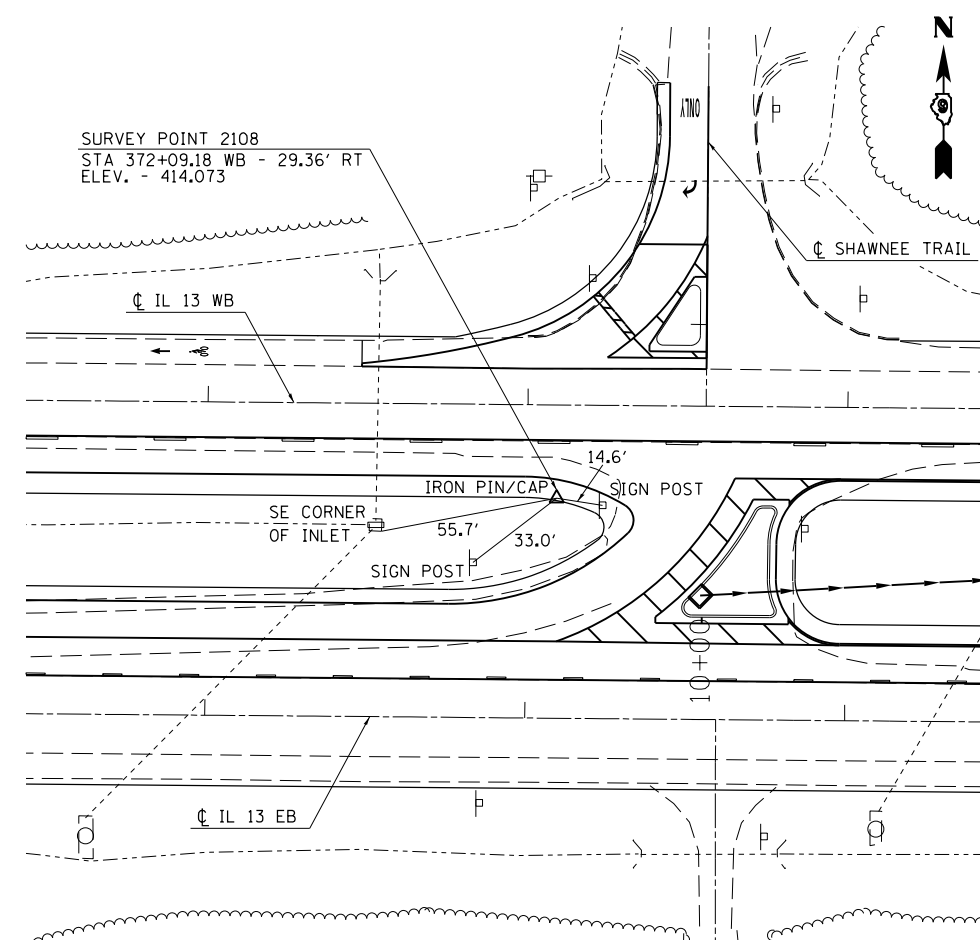
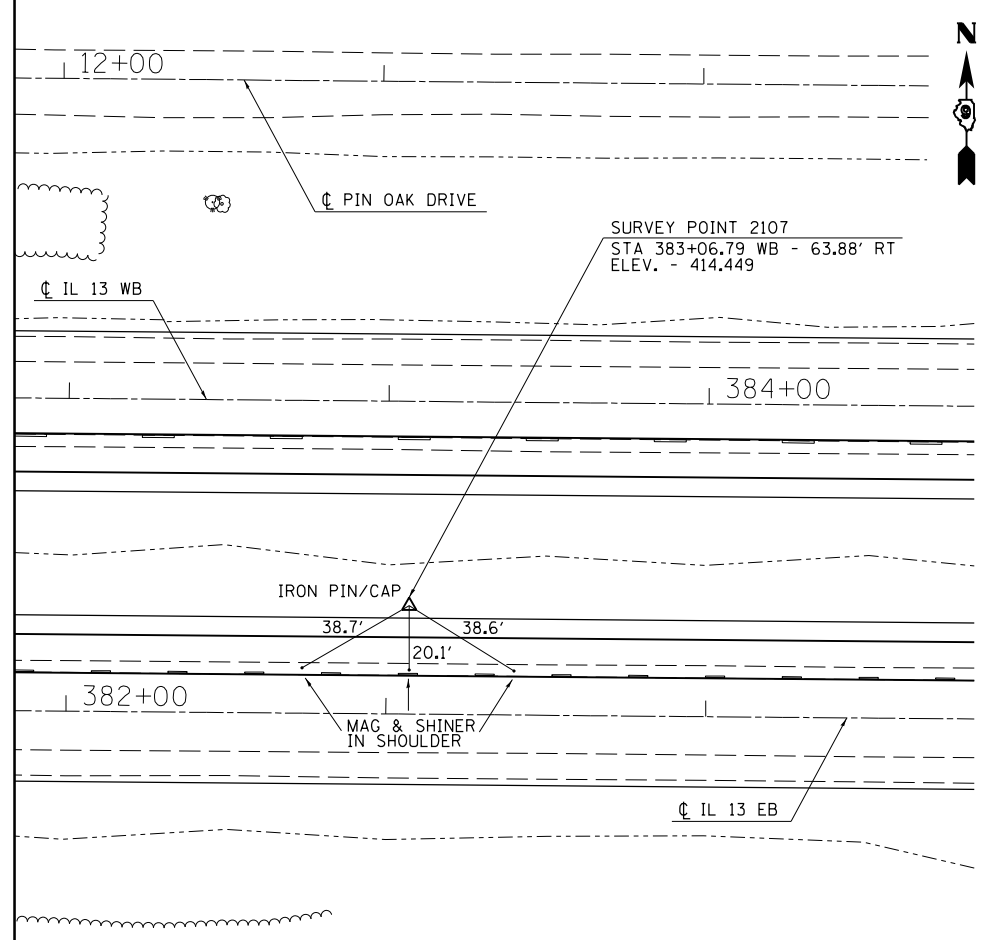
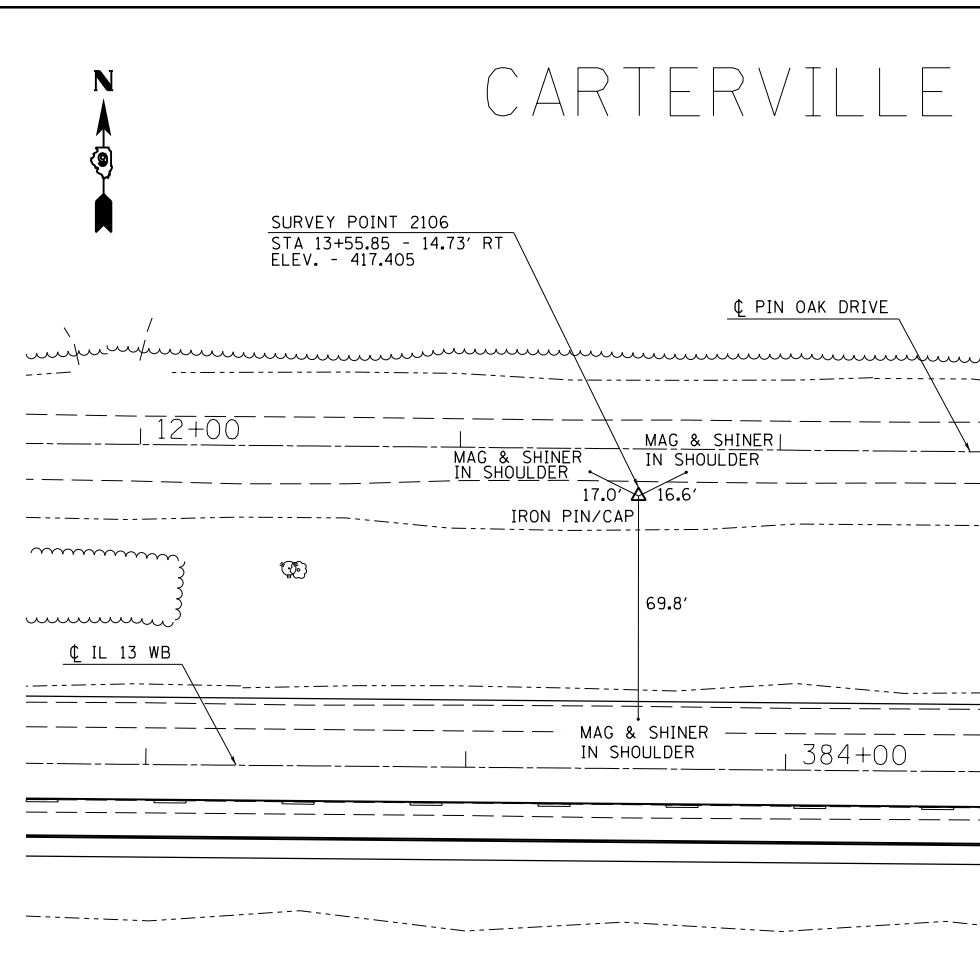
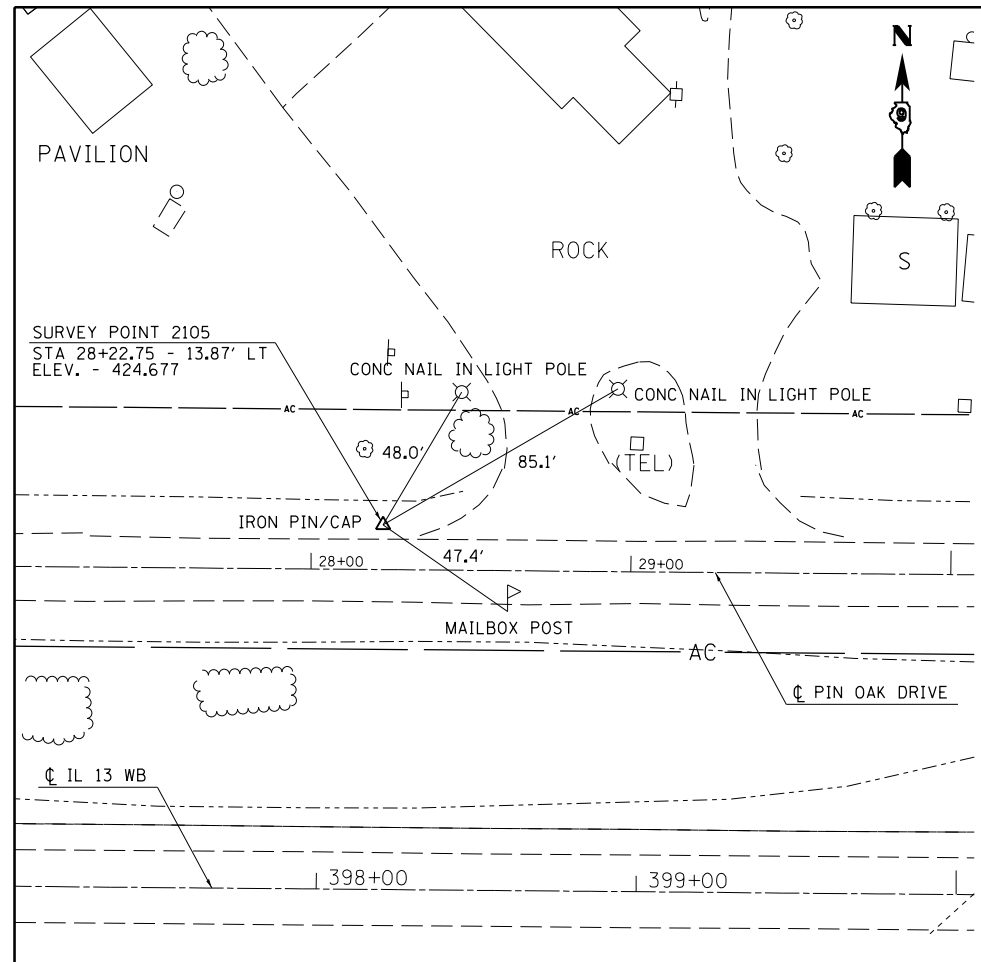


# CARTERVILLE

## SURVEY POINT INFORMATION

SURVEY POINT	NORTHING	EASTING	ELEVATION
2105	393702.650	762360.207	424.677
2106	393686.923	760893.115	417.405
2107	393538.189	760845.259	414.449
2108	393582.341	759747.995	414.073



FILE NAME =	USER NAME = sUSERs	DESIGNED -	REVISED -
et:\pw\work\p1dot\puff\ee\ad0278330\DX\...-sht-details.dgn		DRAWN -	REVISED -
	PLOT SCALE = 60.0000' / in.	CHECKED -	REVISED -
	PLOT DATE = 2/5/2013	DATE -	REVISED -

**STATE OF ILLINOIS  
DEPARTMENT OF TRANSPORTATION**

<b>TIE POINTS</b>			
SCALE:	SHEET	OF SHEETS	STA. TO STA.

F.A.P. RTE.	SECTION	COUNTY	TOTAL SHEETS	SHEET NO.
331	(1-4)R-3,N-5	WILLIAMSON	91	19
CONTRACT NO. 78280				
ILLINOIS FED. AID PROJECT				