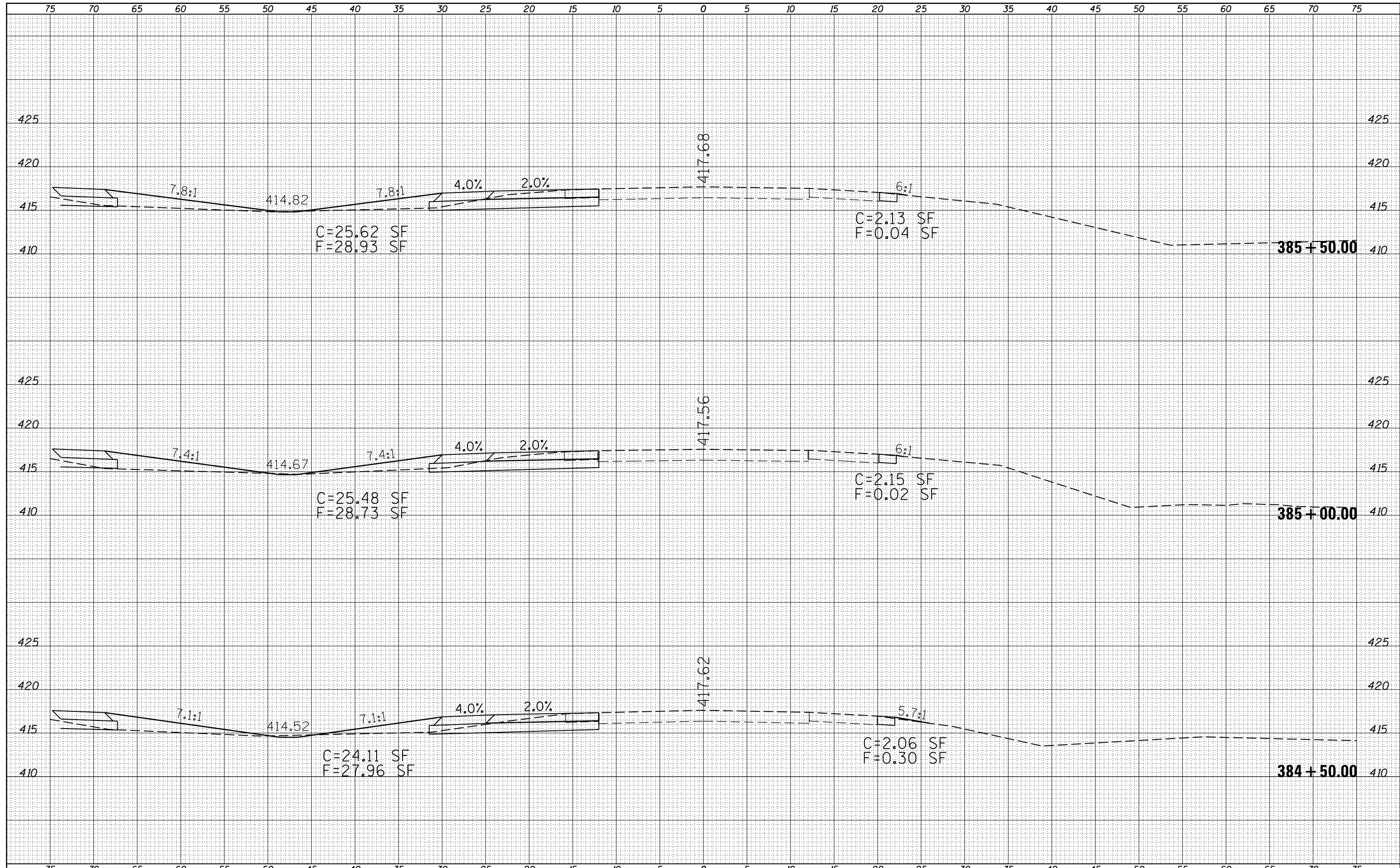


DATE	
BY	
FINAL SURVEY	SURVEYED
NOTE BOOK	PLOTTED
NO.	TEMPLATE
	AREAS
	CHECKED

DATE	
BY	
ORIGINAL SURVEY	SURVEYED
NOTE BOOK	PLOTTED
NO.	TEMPLATE
	AREAS
	CHECKED



FILE NAME =	USER NAME = susers	DESIGNED -	REVISED -	STATE OF ILLINOIS DEPARTMENT OF TRANSPORTATION	CROSS SECTIONS IL 13 EASTBOUND				F.A.P. RTE.	SECTION	COUNTY	TOTAL SHEETS	SHEET NO.
es:\pw_work\pwidot\pufferae\d0278330\78280-sh	es13.dgn	DRAWN -	REVISED -		331	(1-4)R-3,N-5	WILLIAMSON	91	55				
PLOT SCALE = 10.0000' / in.		CHECKED -	REVISED -		CONTRACT NO. 78280								
PLOT DATE = 2/5/2013		DATE -	REVISED -		ILLINOIS FED. AID PROJECT								
					SCALE:	SHEET	OF	SHEETS	STA. 384+50.00	TO STA. 385+50.00			