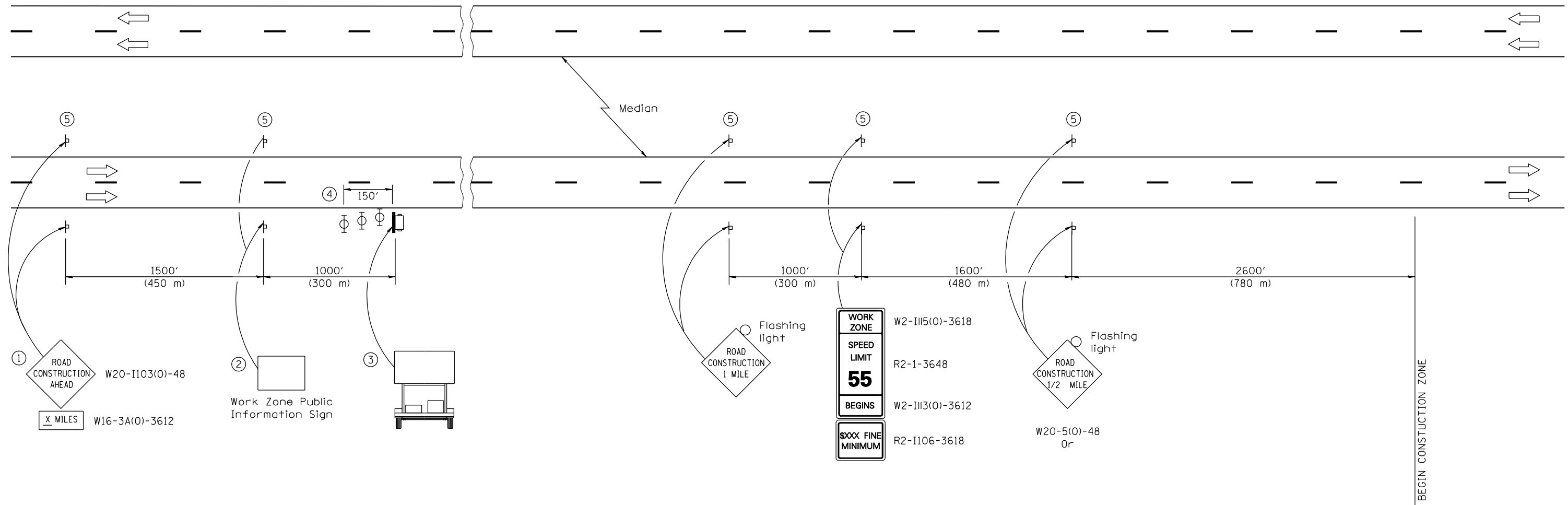


STAGING DETAIL: APPROACH TO CONSTRUCTION ZONE



SYMBOLS

- Portable changeable message sign
- Sign
- Type II barricade, drum, or vertical barricade with monodirectional flashing light

- ① The Road Construction Ahead sign shall be located 3 to 5 miles in advance of the project limits.
- ② The message and size of the Work Zone Public Information Sign shall be as specified by the Department.
- ③ The message board shall be used to display status of lanes within the project. The primary messages shall be:
- ④ Three, Type II barricades, drums, or vertical barricades at 50' (15 m) centers.
- ⑤ This sign shall be omitted when median width is less than 10' (3 m).

GENERAL NOTES

The first two signs and the message board are stationary.
 All dimensions are in inches (millimeters) unless otherwise shown.

FILE NAME = \$FILEL\$	USER NAME = \$USER\$	DESIGNED - JRD	REVISED -
		DRAWN - MSK	REVISED -
		CHECKED - SLD	REVISED -
		DATE - 02/01/2013	REVISED -

**STATE OF ILLINOIS
 DEPARTMENT OF TRANSPORTATION**

**STAGING DETAIL
 INTERSTATE 57**

SCALE: N. T. S. SHEET NO. 1 OF 3 SHEETS STA. TO STA.

F.A.I. RTE.	SECTION	COUNTY	TOTAL SHEETS	SHEET NO.
57	(X1-6-2,X1-5,(X1-4-1BR-1)R-1	WILLIAMSON	202	47
CONTRACT NO. 78334			ILLINOIS FED. AID PROJECT	