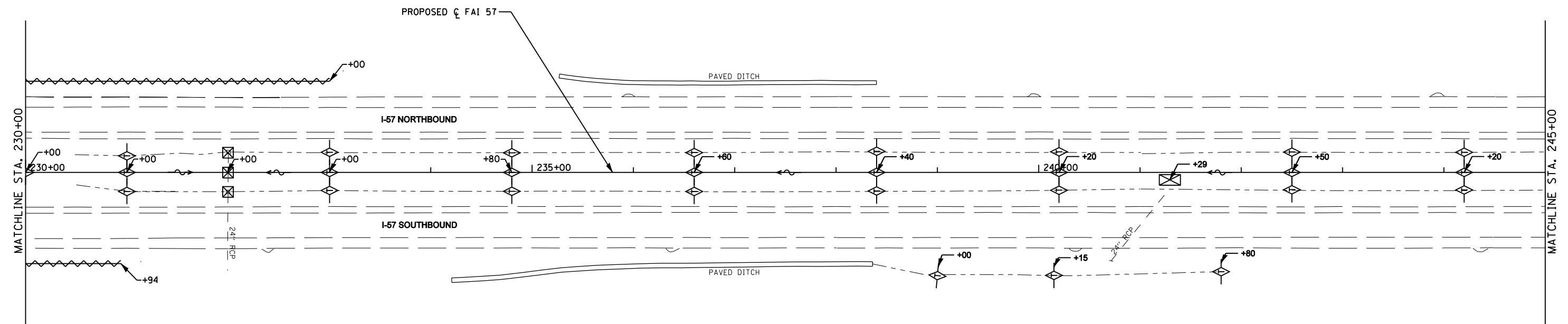
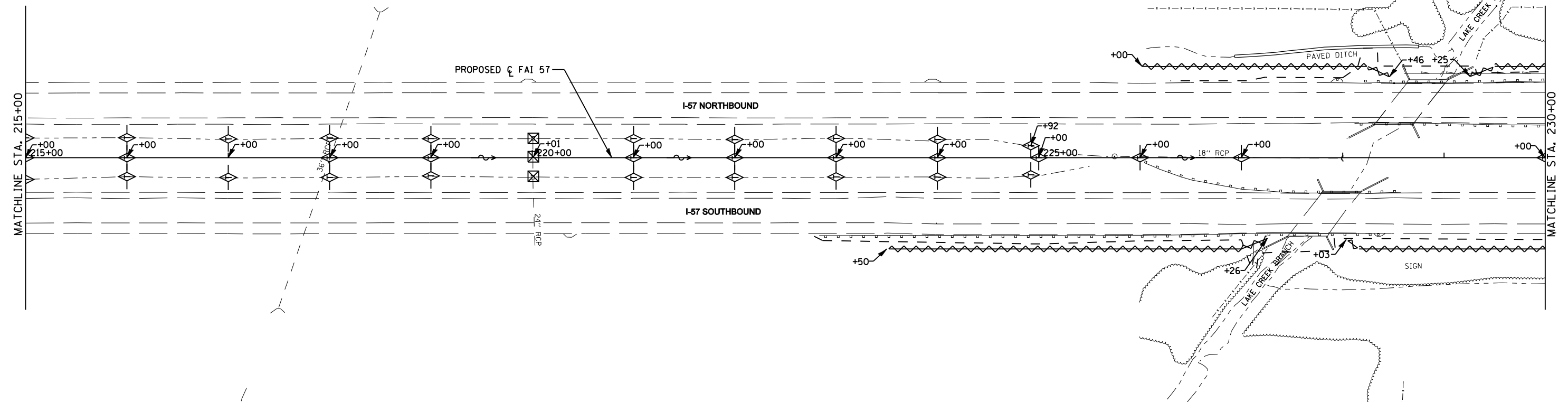


**TEMPORARY EROSION CONTROL**      **PERMANENT EROSION CONTROL**

- ↘ DITCH FLOW      ⊠ INLET AND PIPE PROTECTION      ▨ EROSION CONTROL BLANKET
- ◇ TEMPORARY DITCH CHECK
- ⌚ PERIMETER EROSION BARRIER



**EFK Moen, LLC**  
Civil Engineering Design

FILE NAME = *FILE*	USER NAME = *USER*	DESIGNED - JRD	REVISED -
		DRAWN - MSK	REVISED -
		CHECKED - SLD	REVISED -
		DATE - 02/01/2013	REVISED -

**STATE OF ILLINOIS**  
**DEPARTMENT OF TRANSPORTATION**

**EROSION AND SEDIMENT CONTROL**  
**INTERSTATE 57**

SCALE: 1"=50'      SHEET NO. 3 OF 9 SHEETS      STA. 215+00 TO STA. 245+00

F.A.I. RTE.	SECTION	COUNTY	TOTAL SHEETS	SHEET NO.
57	(X1-6-2,X1-5,(X1-4-1BR-1)R-1	WILLIAMSON	202	59
FED. ROAD DIST. NO. ILLINOIS FED. AID PROJECT			CONTRACT NO. 78334	