

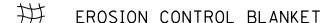


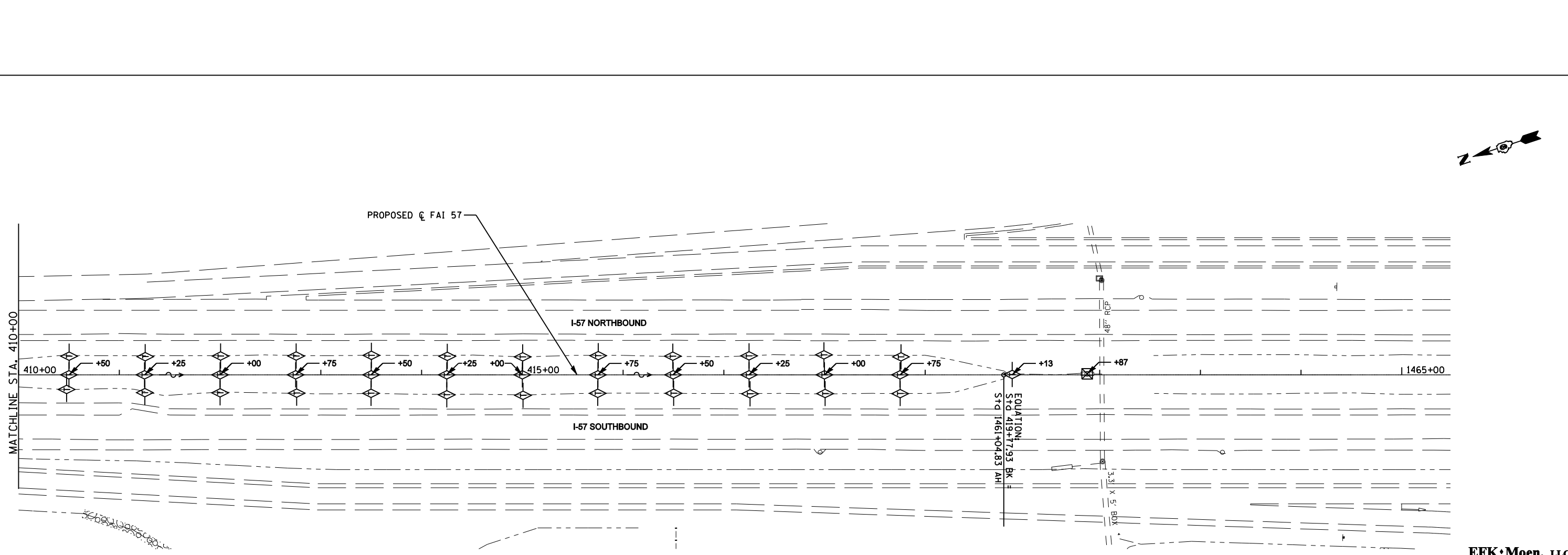
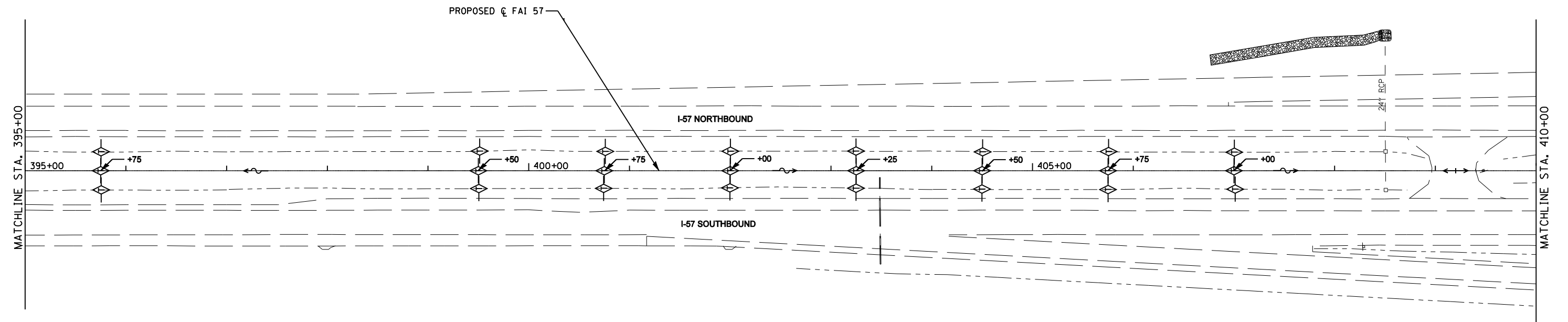


TEMPORARY EROSION CONTROL

PERMANENT EROSION CONTROL

-  DITCH FLOW
-  INLET AND PIPE PROTECTION
-  EROSION CONTROL BLANKET
-  TEMPORARY DITCH CHECK
-  PERIMETER EROSION BARRIER



FILE NAME = *FILE*	USER NAME = *USER*	DESIGNED - JRQ__	REVISED - ---	<b>STATE OF ILLINOIS DEPARTMENT OF TRANSPORTATION</b>	<b>EROSION AND SEDIMENT CONTROL INTERSTATE 57</b>			F.A.I. RTE. 57	SECTION (X1-6-2,X1-5,(X1-4-1BR-1))R-1	COUNTY WILLIAMSON	TOTAL SHEETS 202	SHEET NO. 65
	PLOT SCALE = *SCALE*	CHECKED - SLD__	REVISED - ---		SCALE: 1"=50'	SHEET NO. 9 OF 9 SHEETS	STA. 395+00 TO STA. 1465+00	CONTRACT NO. 78334				
	PLOT DATE = *DATE*	DATE - 02/01/2013	REVISED - ---		FED. ROAD DIST. NO. ILLINOIS FED. AID PROJECT							
<b>EFK Moen, LLC</b> Civil Engineering Design												