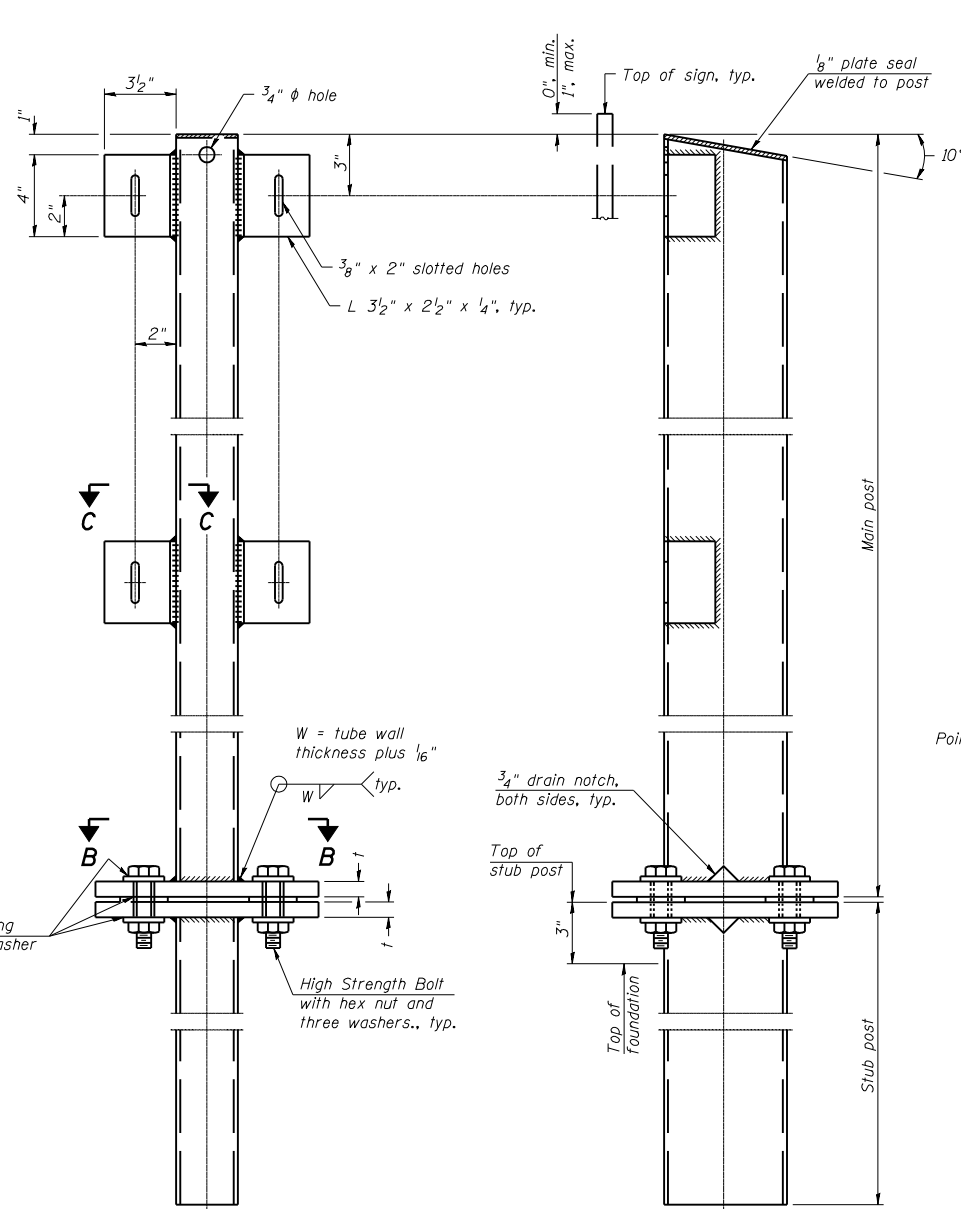


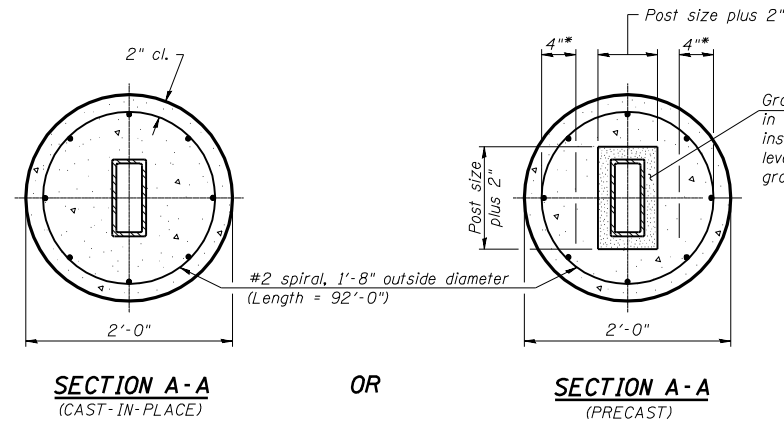
BAT-A-2 1-20-11



FRONT ELEVATION

SIDE ELEVATION

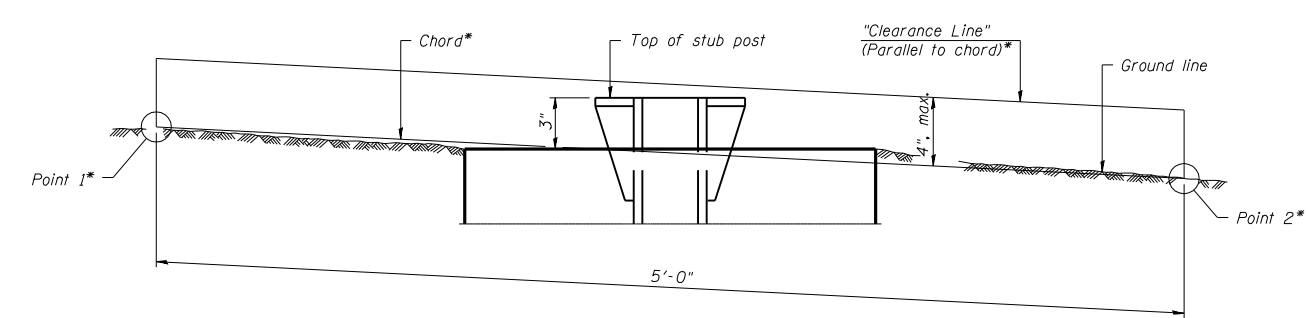
MAIN POST & STUB POST



SECTION A-A (CAST-IN-PLACE)

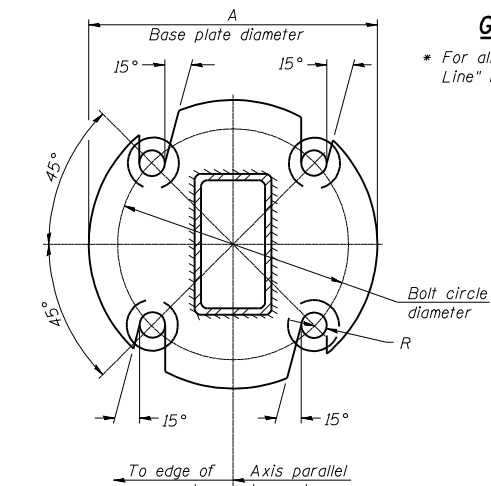
SECTION A-A (PRECAST)

* Hot dip galvanized lifting loops or inserts may be placed in precast foundation inside the spiral reinforcement but not within 6" of the long axis of the post. Inserts must be adequate for safely lifting a total of 3,000 pounds and must not interfere with installation of the stub post or proper functioning of the slip base.

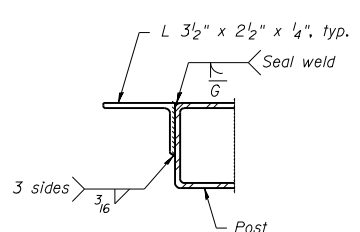


ELEVATION GROUND LINE & STUB POST

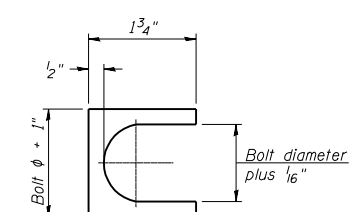
* For all "Point 1" and "Point 2" locations, "Clearance Line" must be at or above top of stub post.



SECTION B-B



SECTION C-C



SHIM DETAIL

Furnish two 0.01" thick and two 0.03" thick stainless steel or brass (ASTM B36) shims per post.

FILE NAME =	USER NAME = \$USER*	DESIGNED - JRD	REVISED -
\$FILEL\$		DRAWN - MSK	REVISED -
		CHECKED - SLD	REVISED -
		DATE - 02/01/2013	REVISED -

STATE OF ILLINOIS
DEPARTMENT OF TRANSPORTATION

BREAK-AWAY TUBULAR STEEL
SIGN POSTS AND DETAILS

SCALE: N. T. S. SHEET NO. 2 OF 2 SHEETS STA. TO STA.

F.A.I. RTE.	SECTION	COUNTY	TOTAL SHEETS	SHEET NO.
57	X1-6-2,X1-5,(X1-4-1BR-1)R-1	WILLIAMSON	202	79
CONTRACT NO. 78334			ILLINOIS FED. AID PROJECT	

EFK Moen, LLC
Civil Engineering Design