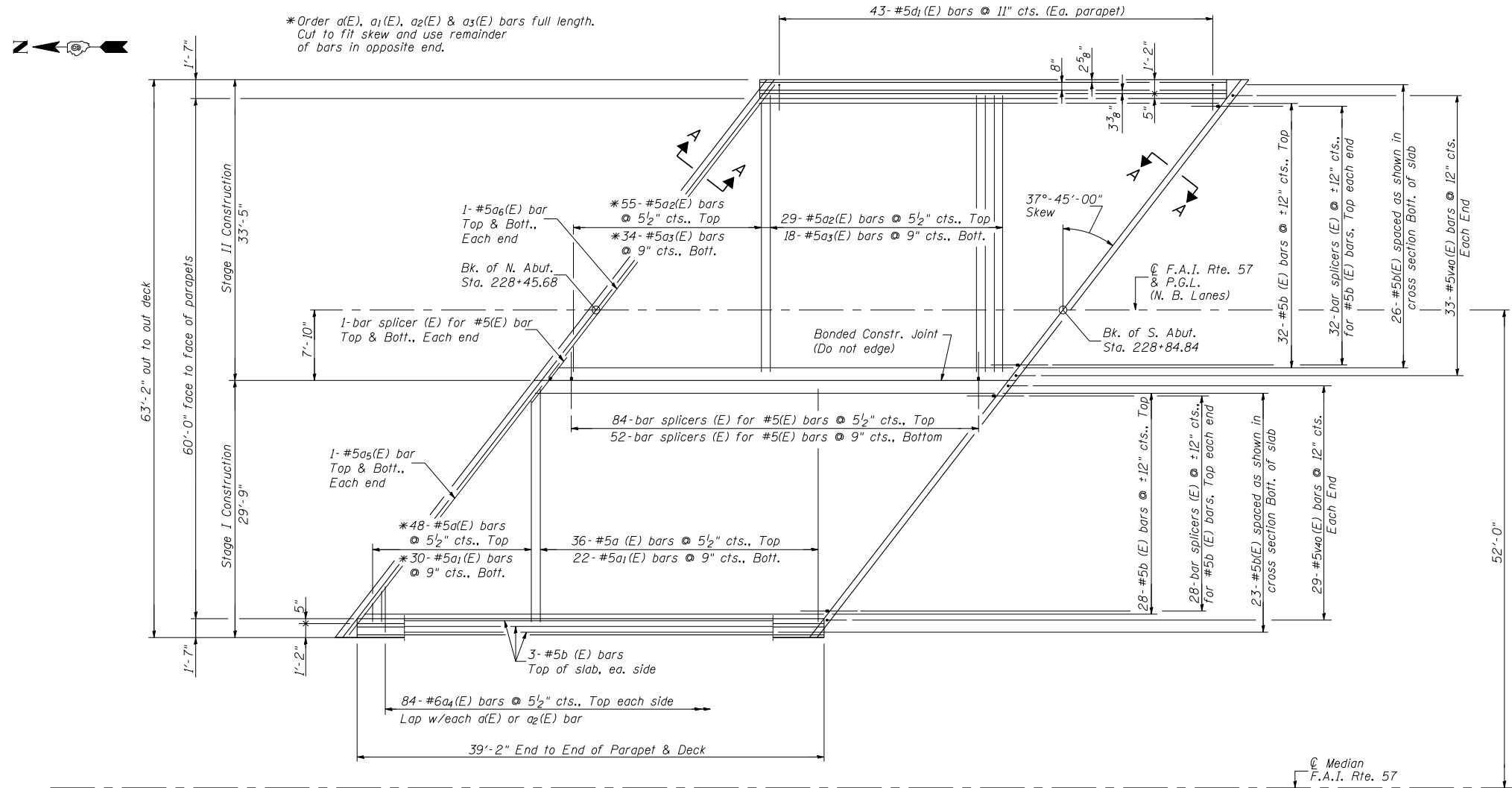
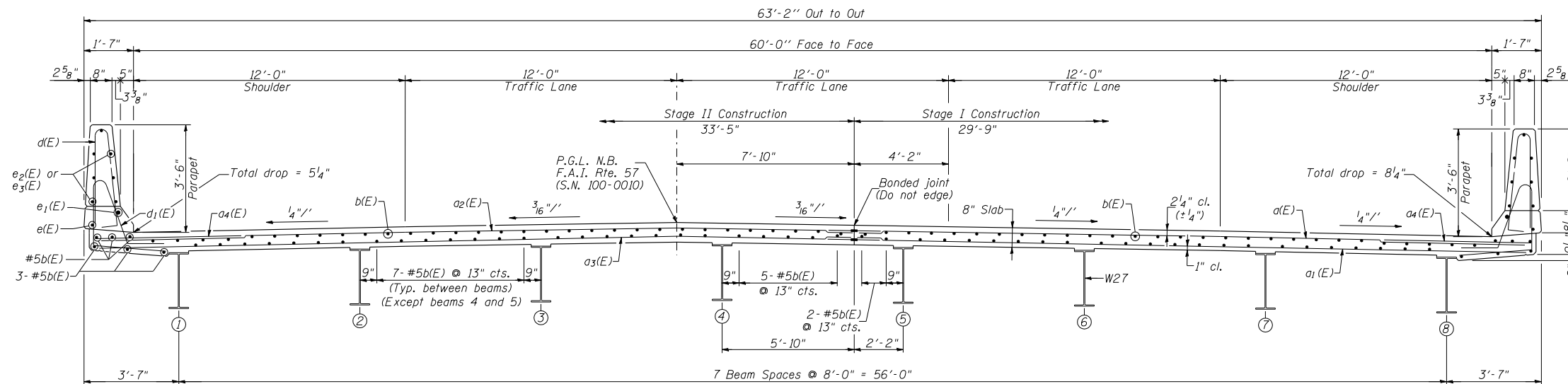


STATE OF ILLINOIS
DEPARTMENT OF TRANSPORTATION



DECK PLAN
(S.N. 100-0010 N.B.)



TYPICAL CROSS SECTION
(Looking South)

NOTES:

1. See Sheet 11 of 29 for parapet details and S.N. 100-0010 Superstructure Bill of Material.
2. See Sheet 27 of 29 for bar splicer details.
3. For Section A-A see Sheet 12 of 29.

SUPERSTRUCTURE
F.A.I. RTE. 57 OVER
LAKE CREEK BRANCH
STATION 228+25.00
STRUCTURE NO. 100-0010 (N.B.)



CRAWFORD MURPHY & TILLY, INC.
CONSULTING ENGINEERS
SPRINGFIELD, ILL. ■ AURORA, ILL. ■ ST. LOUIS, MO
ROCKFORD, ILL. ■ PEORIA, ILL. ■ CHICAGO, ILL.

DESIGNED BY: KEH
CHECKED BY: WLB

DRAWN BY: GLD
DATE: 4/12/10

SHEET NO. 10
29 SHEETS

F.A.S. RTE.	SECTION	COUNTY	TOTAL SHEETS	SHEET NO.
I-57	(X1-4-1) BR -1	WILLIAMSON	202	93
CONTRACT NO. 78334				
FED. ROAD DIST. NO. 9 ILLINOIS FED. AID PROJECT				