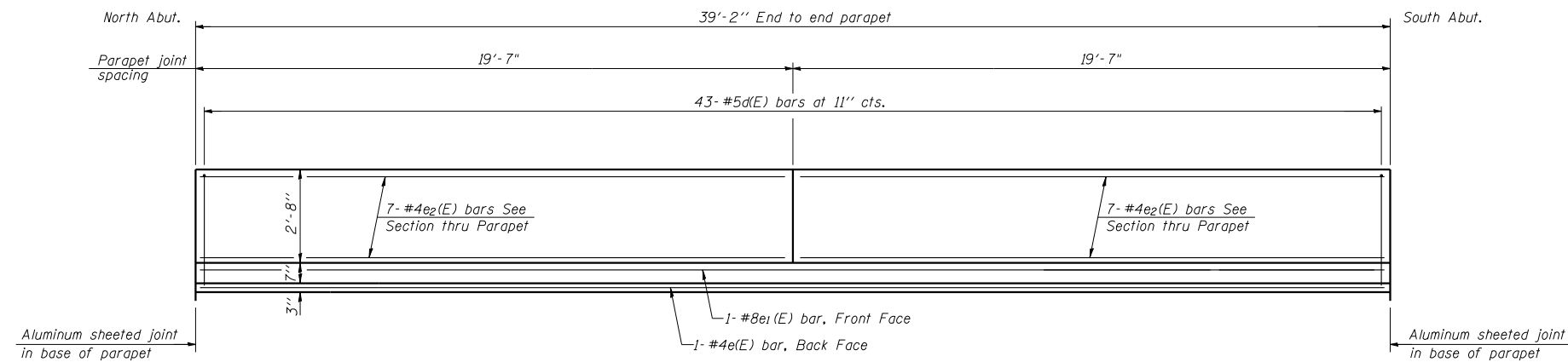
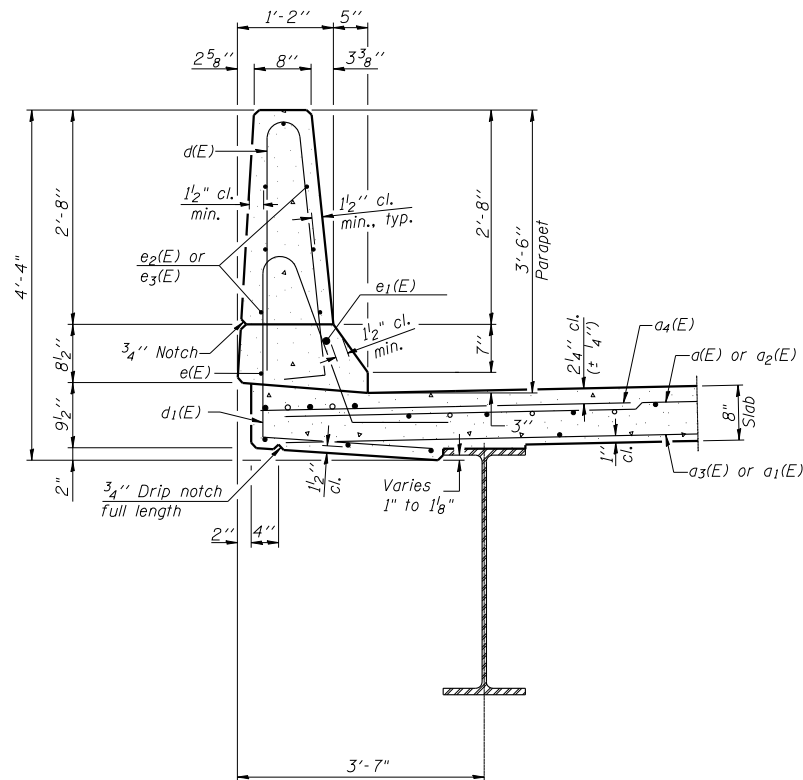


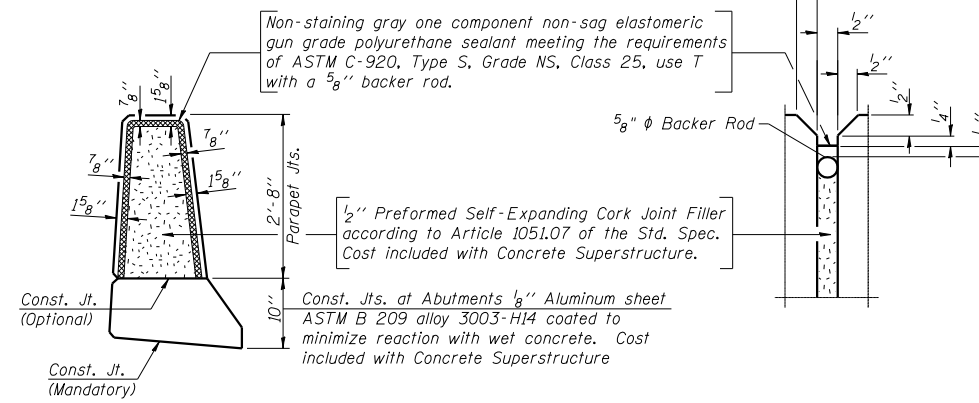
STATE OF ILLINOIS  
DEPARTMENT OF TRANSPORTATION



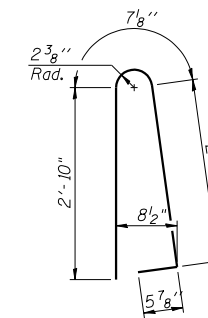
**INSIDE ELEVATION OF PARAPET**  
(East Parapet shown, West opposite)



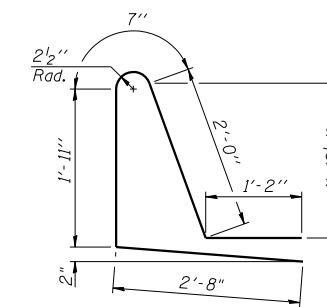
**SECTION THRU PARAPET**



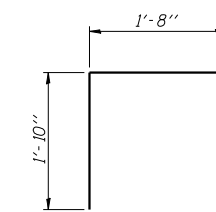
**PARAPET JOINT DETAILS**



**BAR d(E)**



**BAR d1(E)**



**BAR v40(E)**

**S.N. 100-0011 (S.B.)  
SUPERSTRUCTURE  
BILL OF MATERIAL**

Bar	No.	Size	Length	Shape	
d(E)	84	#5	29'-1"	—	
d1(E)	52	#5	28'-11"	—	
a2(E)	84	#5	32'-11"	—	
a3(E)	52	#5	32'-7"	—	
a4(E)	168	#6	6'-6"	—	
a5(E)	4	#5	36'-10"	—	
a6(E)	4	#5	41'-8"	—	
b(E)	121	#5	38'-10"	—	
d(E)	86	#5	6'-10"	—	
d1(E)	86	#5	8'-4"	—	
e(E)	2	#4	38'-10"	—	
e1(E)	2	#8	38'-10"	—	
e2(E)	28	#4	19'-3"	—	
m(E)	8	#6	11'-1"	—	
m1(E)	16	#6	13'-8"	—	
m2(E)	4	#6	9'-4"	—	
m3(E)	4	#6	13'-10"	—	
m4(E)	4	#6	37'-2"	—	
m5(E)	4	#6	41'-10"	—	
v40(E)	124	#5	3'-6"	—	
Reinforcement Bars, Epoxy Coated				Pound	19,140
Concrete Superstructure				Cu. Yd.	86.8
Bridge Deck Grooving				Sq. Yd.	252
Protective Coat				Sq. Yd.	299
Bar Splicers				Each	268

**SUPERSTRUCTURE DETAILS (S.B.)  
F.A.I. RTE. 57 OVER  
LAKE CREEK BRANCH  
STATION 228+25.00  
STRUCTURE NO. 100-0011 (S.B.)**

 CRAWFORD MURPHY & TILLY, INC. CONSULTING ENGINEERS SPRINGFIELD, IL ■ AURORA, IL ■ ST. LOUIS, MO ROCKFORD, IL ■ PEORIA, IL ■ CHICAGO, IL	SHEET NO. 14	F.A.S. RTE. I-57	SECTION (X1-4-1) BR -1	COUNTY WILLIAMSON	TOTAL SHEETS 202	SHEET NO. 97
	29 SHEETS	CONTRACT NO. 78334		FED. ROAD DIST. NO. 9 ILLINOIS FED. AID PROJECT		