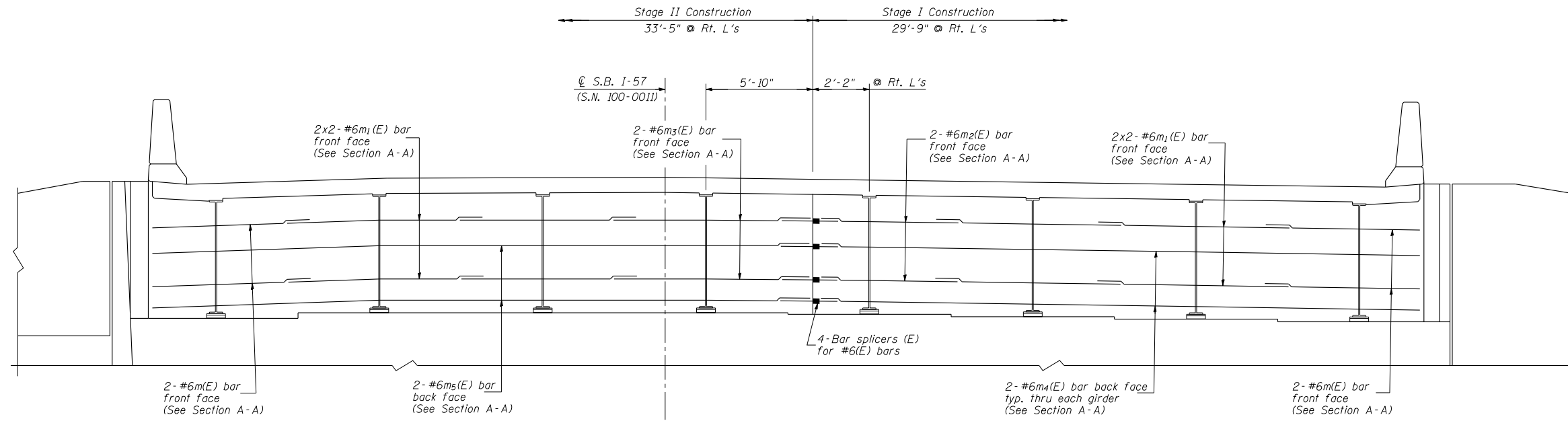


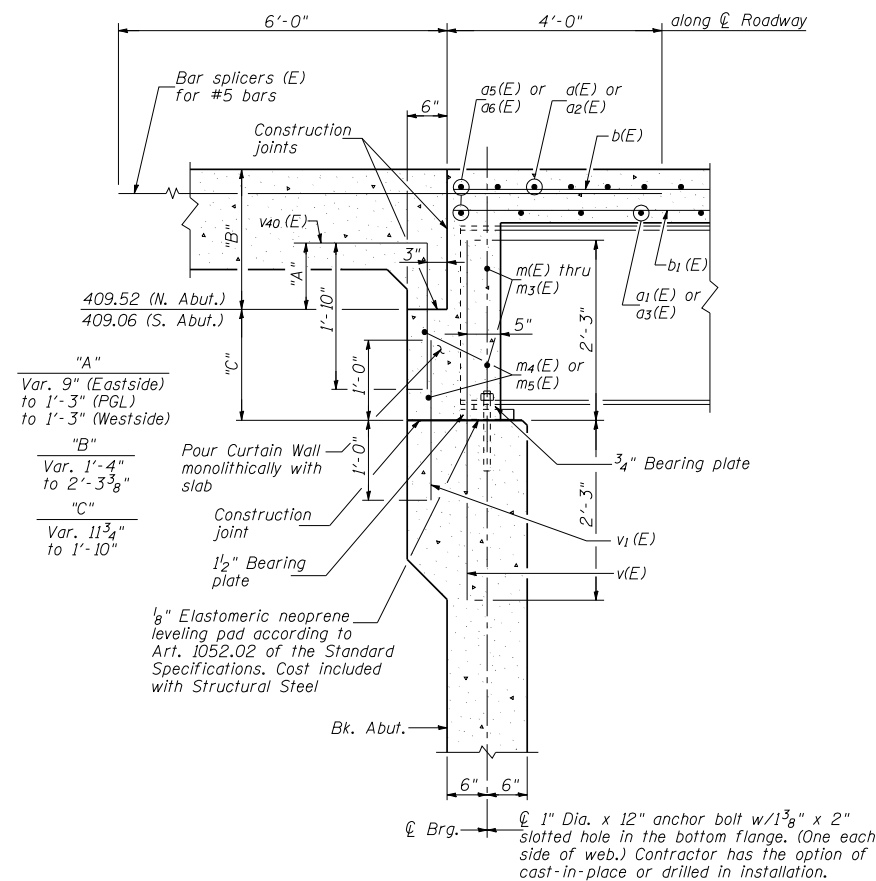
STATE OF ILLINOIS
DEPARTMENT OF TRANSPORTATION



CURTAIN WALL ELEVATION AT ABUTMENT

(SN 100-0011 Looking North at North Abut.)
(SN 100-0011 South Abut. similar)

MIN. BAR LAP
#6 Bar = 3'-4"



SECTION A-A

(Dimensions at Rt. angles to abutment, except as shown)

NOTES:

1. Reinforcement bars in curtain wall are billed with superstructure on Sheet 14 of 29.
2. Concrete in curtain wall is included with Concrete superstructure on Sheet 14 of 29.
3. For location of holes in web see Sheet 19 of 29.
4. For anchor bolt details see Sheet 19 of 29.
5. For bar splicer details see Sheet 27 of 29.

CURTAIN WALL DETAILS
F.A.I. RTE. 57 OVER
LAKE CREEK BRANCH
STATION 228+25.00
STRUCTURE NO. 100-0011 (S.B.)

 CRAWFORD MURPHY & TILLY, INC. CONSULTING ENGINEERS SPRINGFIELD, IL ■ AURORA, IL ■ ST. LOUIS, MO ROCKFORD, IL ■ PEORIA, IL ■ CHICAGO, IL	SHEET NO. 15	F.A.S. RTE.	SECTION	COUNTY	TOTAL SHEETS	SHEET NO.
	29 SHEETS	I-57	(X1-4-1) BR -1	WILLIAMSON	202	98
DESIGNED BY: KEH CHECKED BY: WLB	DRAWN BY: GLD DATE: 4/12/10	CONTRACT NO. 78334				
		FED. ROAD DIST. NO. 9	ILLINOIS	FED. AID PROJECT		