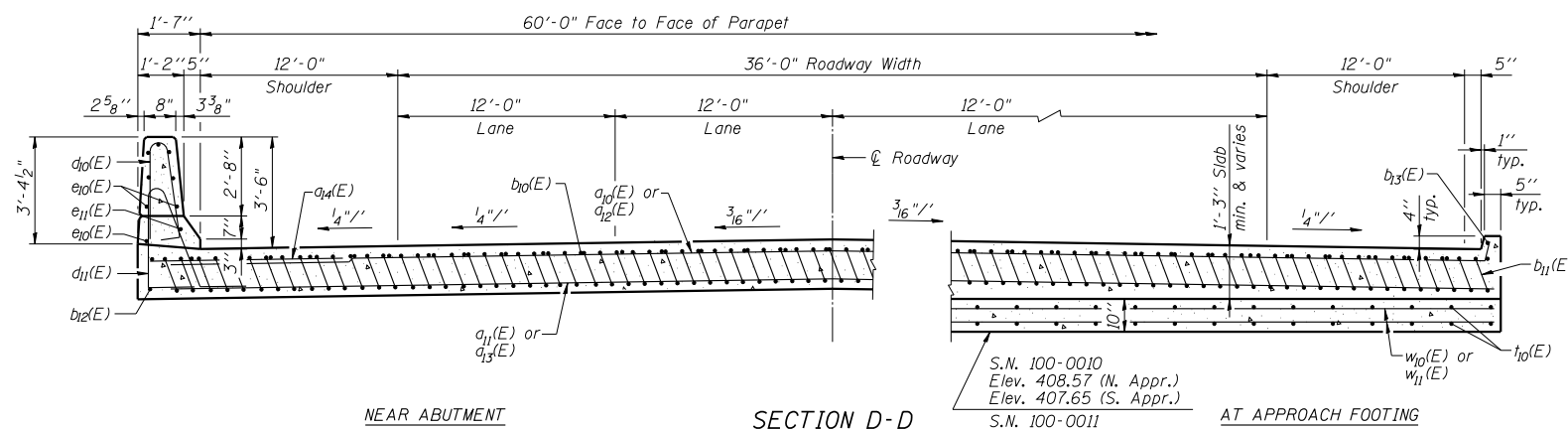
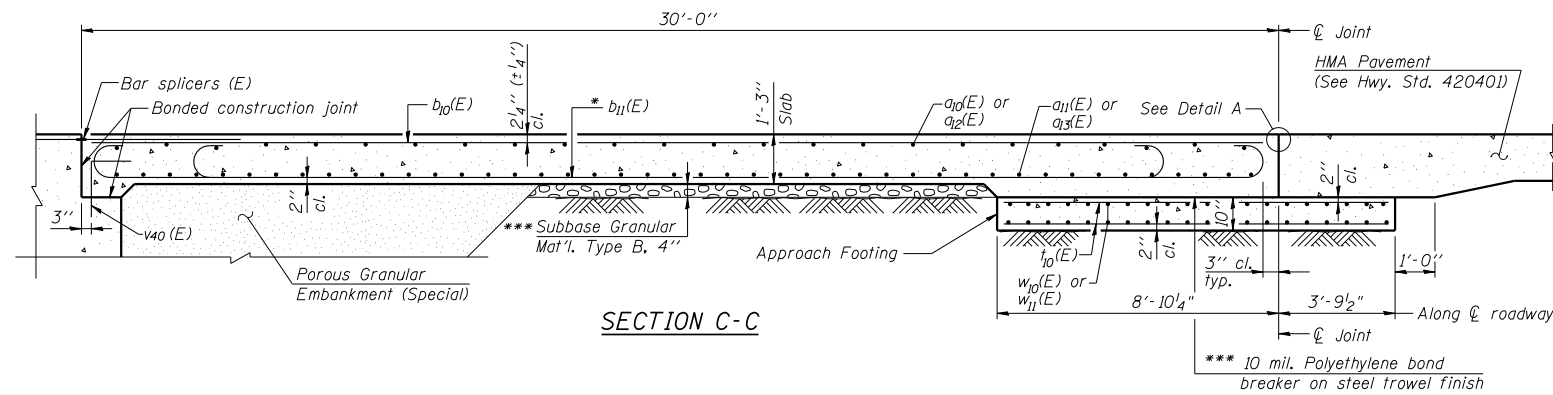


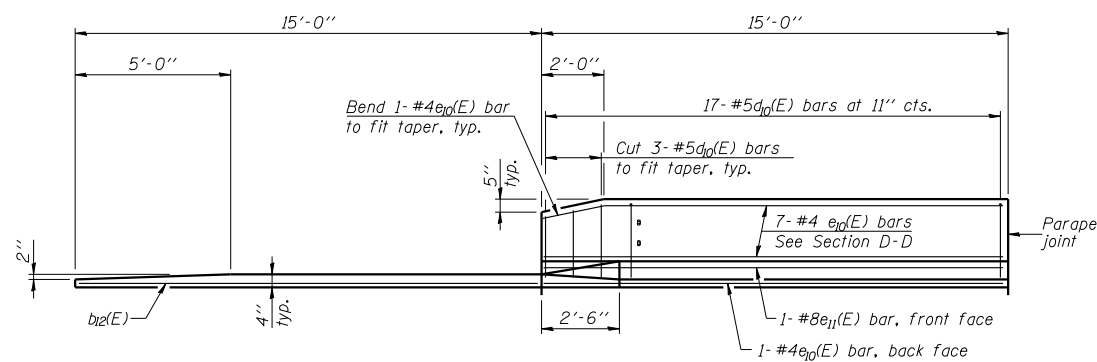
STATE OF ILLINOIS  
DEPARTMENT OF TRANSPORTATION

NOTES:

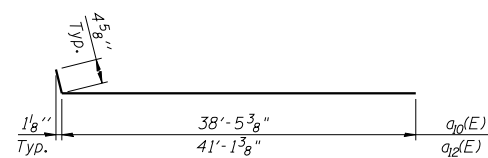
1. See sheet 16 of 29 for Detail A and View B-B.
2. Approach slab and parapet concrete shall be paid for as Concrete Superstructure.
3. Approach footing concrete shall be paid for as Concrete Structures.
4. Reinforcement shall be paid for as Reinforcement Bars, Epoxy Coated.
5. For  $v_{40}(E)$  bar details, see sheets 10 thru 15 of 29.
6. The approach footing maximum applied service bearing pressure ( $Q_{max}$ ) = 2.0 ksf.
7. For bar splicer details, see sheet 27 of 29.
8. Cost of excavation for approach footing included with Concrete Structures.
9. For Porous Granular Embankment (Special) and drainage treatment details, see sheet 2 of 29.
10. For additional parapet details, see sheets 11 & 14 of 29.



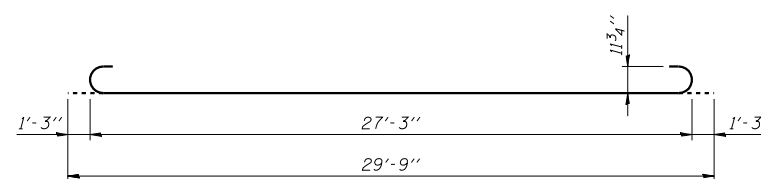
\* Tilt #9  $b_{11}(E)$  bars as required to maintain clearance.  
\*\*\* Cost included with Concrete Superstructure.



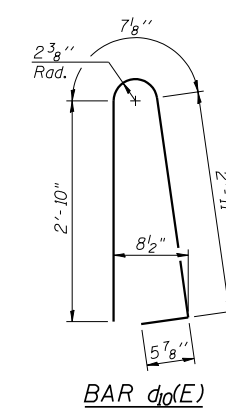
VIEW E-E



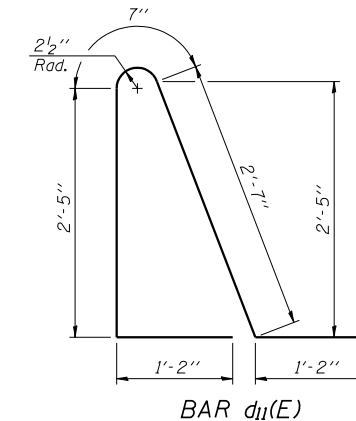
BAR  $a_{10}(E)$  and  $a_{12}(E)$



BAR  $b_{11}(E)$



BAR  $a_{10}(E)$



BAR  $d_{11}(E)$

FOUR APPROACHES  
BILL OF MATERIAL

Bar	No.	Size	Length	Shape
$a_{10}(E)$	100	#4	38'-10"	—
$a_{11}(E)$	184	#5	39'-2"	—
$a_{12}(E)$	100	#4	41'-6"	—
$a_{13}(E)$	184	#5	41'-2"	—
$a_{14}(E)$	96	#6	6'-6"	—
$b_{10}(E)$	200	#4	29'-8"	—
$b_{11}(E)$	584	#9	29'-9"	—
$b_{12}(E)$	16	#4	14'-8"	—
$d_{10}(E)$	136	#5	6'-10"	—
$d_{11}(E)$	136	#5	7'-11"	—
$e_{10}(E)$	64	#4	14'-8"	—
$e_{11}(E)$	8	#8	14'-8"	—
$t_{10}(E)$	496	#4	12'-3"	—
$w_{10}(E)$	160	#5	39'-2"	—
$w_{11}(E)$	160	#5	41'-2"	—
Bridge Deck Grooving		Sq. Yd.	780	
Protective Coat		Sq. Yd.	864	
Structure Excavation		Cu. Yd.	213	
Concrete Superstructure		Cu. Yd.	391.0	
Concrete Structures		Cu. Yd.	96.5	
Reinforcement Bars, Epoxy Coated		Pound	105,410	

APPROACH SLAB DETAILS 2  
F.A.I. RTE. 57 OVER  
LAKE CREEK BRANCH  
STATION 228+25.00  
STRUCTURE NO. 100-0010 (N.B.)  
STRUCTURE NO. 100-0011 (S.B.)

**CMT**  
CRAWFORD MURPHY & TILLY, INC.  
CONSULTING ENGINEERS  
SPRINGFIELD, IL ■ AURORA, IL ■ ST. LOUIS, MO  
ROCKFORD, IL ■ PEORIA, IL ■ CHICAGO, IL

SHEET NO. 17  
29 SHEETS

F.A.S. RTE.	SECTION	COUNTY	TOTAL SHEETS	SHEET NO.
I-57	(X1-4-1) BR -1	WILLIAMSON	202	100
CONTRACT NO. 78334				
FED. ROAD DIST. NO. 9 ILLINOIS FED. AID PROJECT				

DESIGNED BY: KEH  
CHECKED BY: WLB  
DRAWN BY: GLD  
DATE: 4/12/10