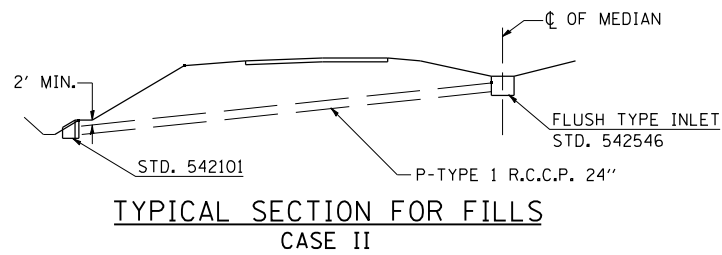
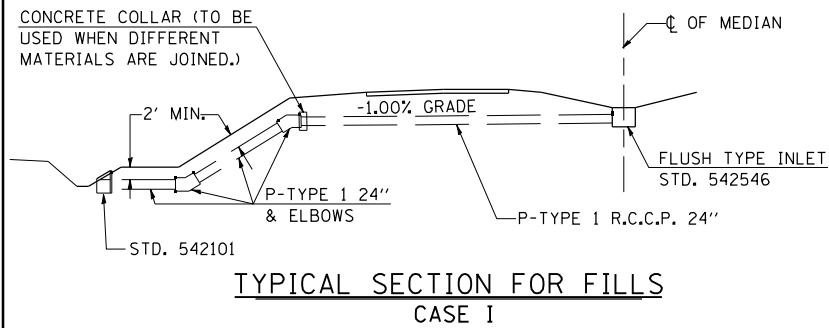


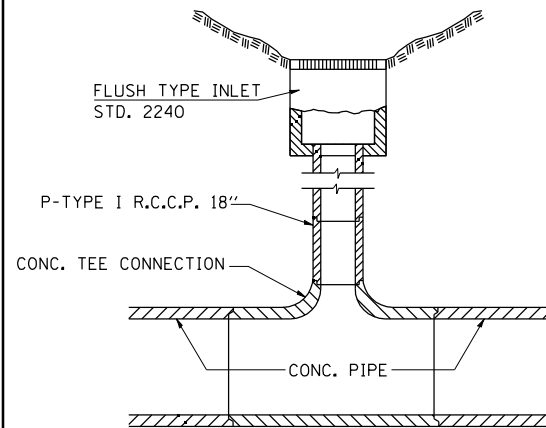
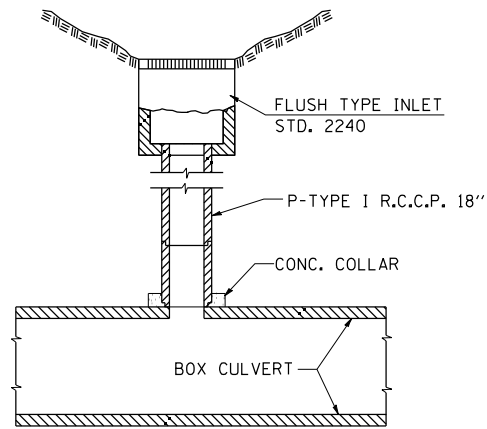
## DETAILS SHOWING METHOD OF DRAINING PROPOSED MEDIAN INLETS



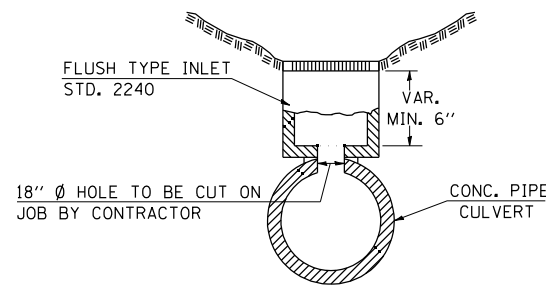
**NOTES:**

THE ELBOWS SHALL BE PAID FOR AT THE CONTRACT UNIT PRICE EACH FOR **REINFORCED CONCRETE PIPE ELBOW** FOR THE PIPE SIZE SPECIFIED.

SEE PLAN SHEET OR CROSS SECTIONS FOR TYPE OF INSTALLATION. (CASE I OR II.)



INSTALLATION DETAILS WHERE INLETS OCCUR DIRECTLY OVER PROPOSED PIPE CULVERT AND WHERE SUFFICIENT SPACE EXISTS BETWEEN BOTTOM OF INLET AND TOP OF CULVERT TO ALLOW THE USE OF ONE OR MORE JOINTS OF PIPE.



INSTALLATION DETAILS WHERE INLETS OCCUR DIRECTLY OVER PROPOSED PIPE CULVERT AND WHERE SUFFICIENT SPACE DOES NOT EXIST BETWEEN BOTTOM OF INLET AND TOP OF CULVERT TO ALLOW THE USE OF A FULL JOINT OF PIPE.

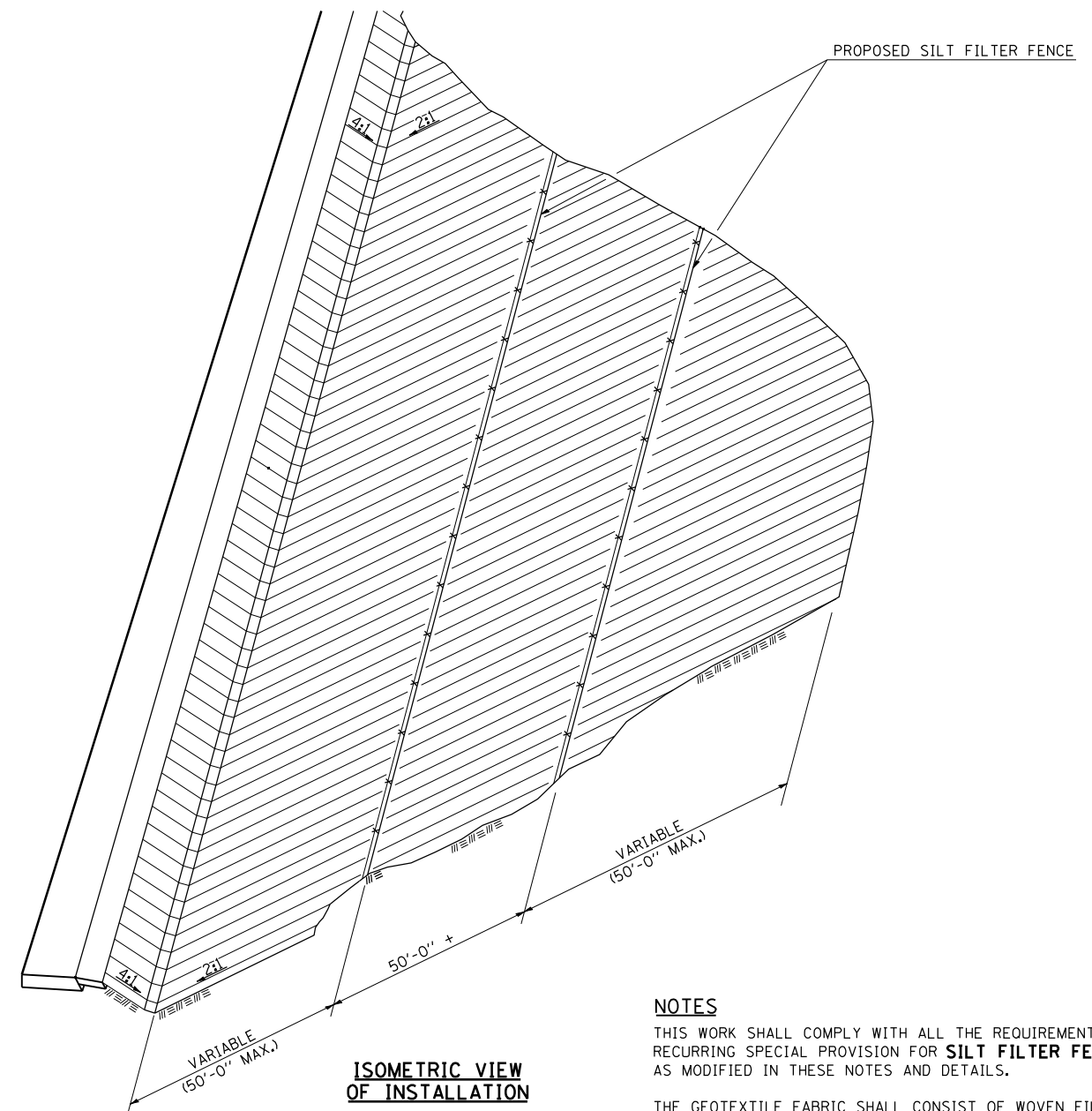
**NOTE:**

THE CONCRETE TEE CONNECTION SHALL BE PAID FOR AT THE CONTRACT UNIT PRICE EACH FOR **REINFORCED CONCRETE PIPE TEE** FOR THE PIPE SIZE SPECIFIED. THIS PRICE SHALL INCLUDE A SIX (6) FOOT LENGTH OF MAIN REINFORCED CONCRETE PIPE AND TWO (2) FOOT LENGTH OF THE REINFORCED CONCRETE PIPE RISER.

REVISIONS	
REDRAWN	8-17-89
REVISED	3-26-08
REVISED	
REVISED	

STD. 9-23

## DETAIL OF SILT FILTER FENCE



**NOTES**

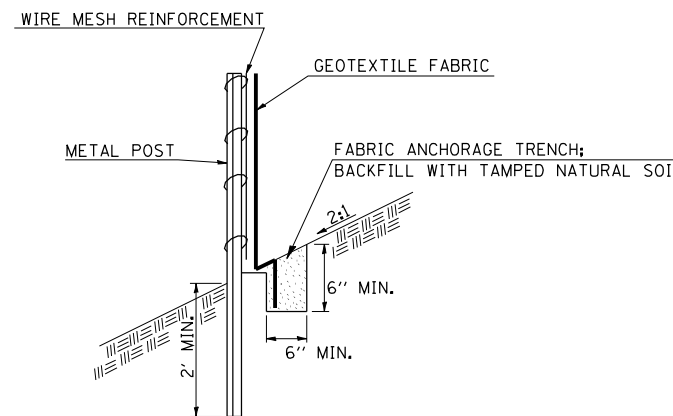
THIS WORK SHALL COMPLY WITH ALL THE REQUIREMENTS OF THE RECURRING SPECIAL PROVISION FOR **SILT FILTER FENCE**, EXCEPT AS MODIFIED IN THESE NOTES AND DETAILS.

THE GEOTEXTILE FABRIC SHALL CONSIST OF WOVEN FILAMENTS OF POLYPROPYLENE, POLYESTER OR POLYETHYLENE. NEEDLE PUNCHED, HEAT-BONDED OR RESIN BONDED FABRIC WILL NOT BE PERMITTED.

THE WIRE MESH REINFORCEMENT SHALL BE A MINIMUM OF 36" IN HEIGHT, HAVE A MINIMUM WIRE SIZE OF .14 GAGE AND A MAXIMUM WIRE SPACING OF SIX INCHES. WOVEN WIRE FENCING MAY BE USED PROVIDED IT MEETS THESE REQUIREMENTS.

THE WIRE MESH REINFORCEMENT SHALL BE ATTACHED TO THE STEEL POST WITH TIE WIRES. THE GEOTEXTILE FABRIC SHALL BE ATTACHED TO THE WIRE MESH REINFORCEMENT WITH HOG RINGS. THE STEEL POSTS SHALL BE A MINIMUM OF 6' LONG AND SHALL BE PLACED ON 10' CENTERS.

THIS WORK SHALL BE PAID FOR AT THE CONTRACT UNIT PRICE PER FOOT FOR **PERIMETER EROSION BARRIER AND FENCE**, AS MEASURED (**EROSION CONTROL**) IN PLACE. THE UNIT PRICE SHALL INCLUDE THE COST OF ALL MATERIAL, EQUIPMENT AND LABOR TO CONSTRUCT THE FENCE AS DESCRIBED.



REVISIONS	
REDRAWN	2-15-89
REVISED	8-18-94
REVISED	10-3-94
REVISED	12-17-01
RESIZED	5-7-08

STD. 9-40

FILE NAME =	USER NAME = \$USER*	DESIGNED - JRD	REVISED -
\$FILEL\$		DRAWN - MSK	REVISED -
	PLOT SCALE = \$SCALE*	CHECKED - SLD	REVISED -
	PLOT DATE = \$DATE*	DATE - 02/01/2013	REVISED -

**STATE OF ILLINOIS  
DEPARTMENT OF TRANSPORTATION**

**DISTRICT DETAILS**

SCALE: N. T. S. SHEET NO. 3 OF 7 SHEETS STA. TO STA.

F.A.I. RTE.	SECTION	COUNTY	TOTAL SHEETS	SHEET NO.
57	(X1-6-2,X1-5,(X1-4-1BR-1)R-1	WILLIAMSON	202	115
CONTRACT NO. 78334				

ILLINOIS FED. AID PROJECT