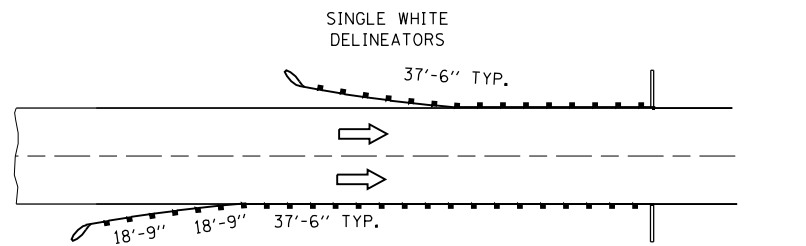
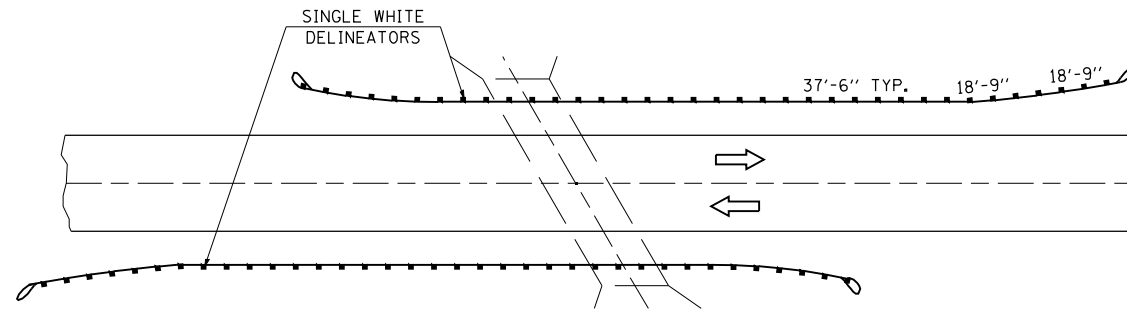


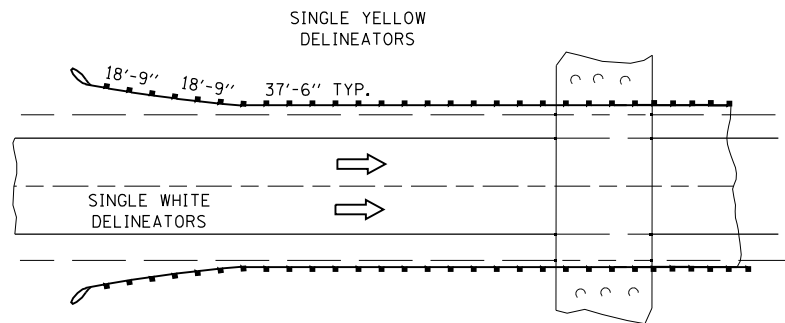
TYPICAL GUARDRAIL DELINEATION



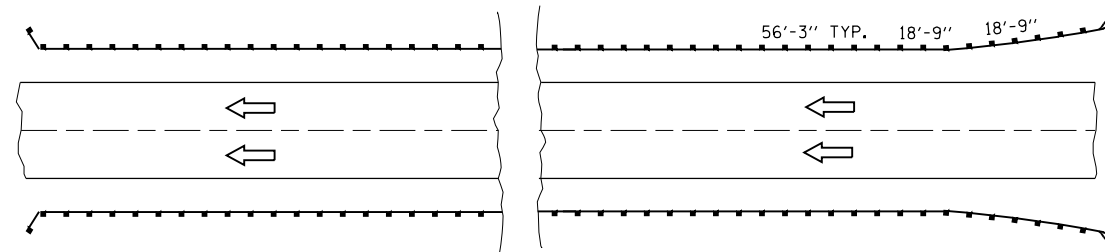
BRIDGE APPROACH INSTALLATION (TWO-WAY TRAFFIC)



ROADSIDE OBSTACLE INSTALLATION - LENGTH 250' OR LESS
(TWO WAY TRAFFIC)

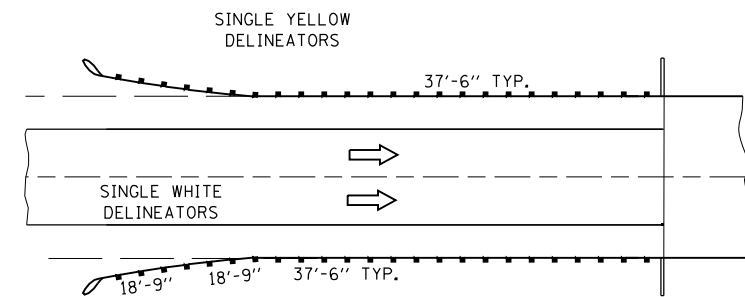


ROADSIDE OBSTACLE INSTALLATION - LENGTH 250' OR LESS
(ONE WAY TRAFFIC)

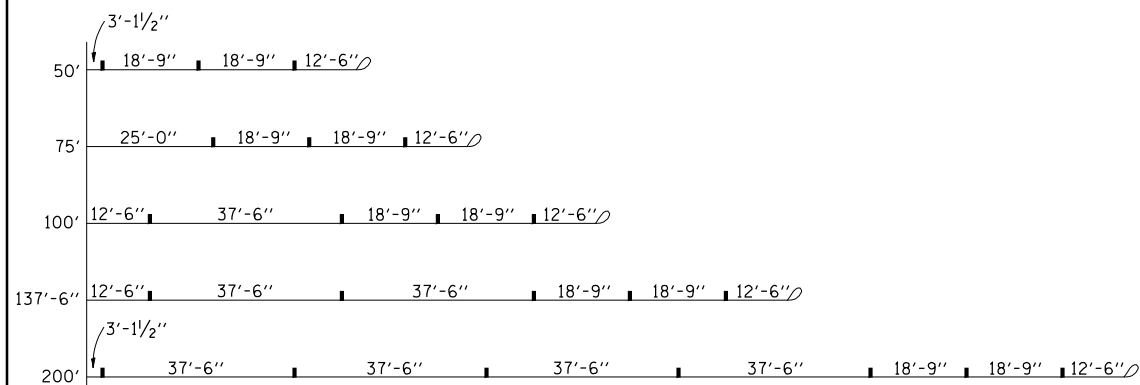


EMBANKMENT OR ROADSIDE OBSTACLE INSTALLATION -
LENGTH GREATER THAN 250'

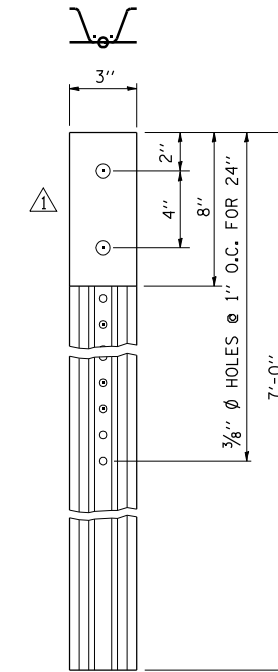
(ONE-WAY TRAFFIC SHOWN DELINEATOR SPACING FOR TWO-TRAFFIC SIMILAR.
DELINEATOR COLOR WILL BE THE SAME AS THE ADJACENT PAVEMENT EDGE MARKING)



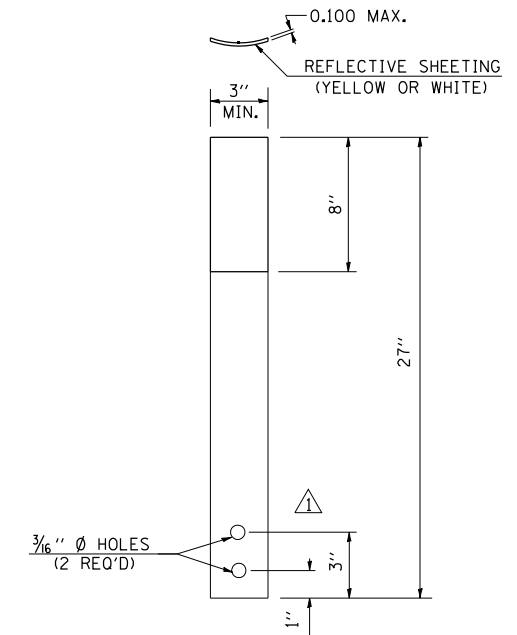
BRIDGE APPROACH INSTALLATION (ONE-WAY TRAFFIC)



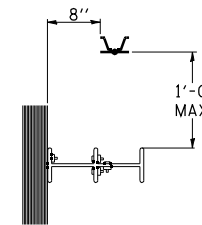
GRAPHICS SHOWING SPACING OF GUARDRAIL DELINEATORS
AT SOME COMMONLY USED BRIDGE APPROACHES



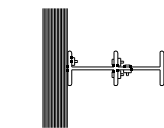
DETAIL OF A SINGLE
WHITE OR SINGLE YELLOW
DELINEATOR



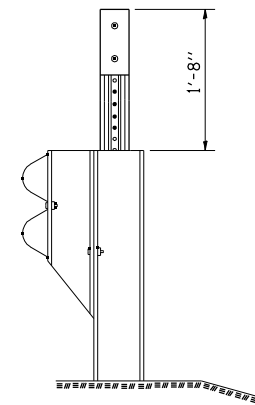
DETAIL OF FLEXIBLE
GUARDRAIL DELINEATOR



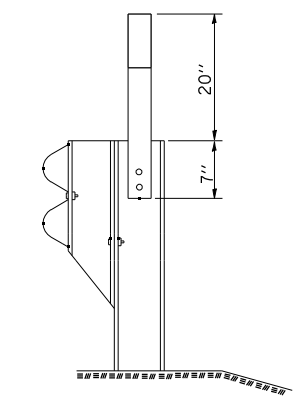
PLAN VIEW



PLAN VIEW



TYPICAL STEEL POST
GUARDRAIL DELINEATOR
INSTALLATION



TYPICAL FLEXIBLE
GUARDRAIL DELINEATOR
INSTALLATION

GENERAL NOTES

- THE UNIT PRICE OF DELINEATOR INCLUDES: COST(S) OF DELINEATOR FACE(S), POST, HARDWARE, AND INSTALLATION.
- DELINEATOR FACE WILL BE ENCAPSULATED LENS REFLECTIVE SHEETING.
- DELINEATORS ON STEEL POSTS
 - DELINEATOR FACE SHALL BE PLACED ON 0.06" SHEET ALUMINUM OR 14 GAGE GALVANIZED SHEET STEEL
 - DELINEATOR POSTS SHALL BE GALVANIZED STEEL U-SECTION POSTS (2.0 TO 2.5 LBS PER FT.). THE POSTS ARE TO BE FABRICATED BEFORE THE METAL IS GALVANIZED. RADIUS IN BENDS OF POST CROSS-SECTION NOT TO EXCEED 1/2 INCH FOR HOT ROLLED SECTION.
 - WHEN COVER OVER A DRAINAGE STRUCTURE IS LESS THAN THE NORMAL DELINEATOR POST DEPTH, THE DELINEATOR POSTS WILL BE FIELD CUT, DRILLED AND FASTENED TO THE BACK OF THE GUARDRAIL POSTS WITH (2) 1/4" LAG SCREWS.
- DELINEATORS ON FLEXIBLE POSTS
 - DELINEATOR POSTS SHALL BE WHITE IN COLOR.
 - THE DELINEATOR POSTS WILL BE SECURED TO METAL GUARDRAIL POSTS BY TWO HUCK RIVETS (PIN *C6LB-R6-7C; COLLAR *3LCW-2R6-6) OR EQUIVALENT. A 3/8" GALVANIZED FLANGED NUT WILL BE PLACED BETWEEN THE DELINEATOR POST AND GUARDRAIL POST ON EACH RIVET.
HOLES IN THE STEEL GUARDRAIL POSTS SHALL BE 1/4" DIAMETER AND MAY BE SHOP FABRICATED OR FIELD DRILLED.

REVISIONS	
DRAWN	5-17-97
REVISED	01-10-07
RESIZED	05-06-08

STD. 9-42

FILE NAME =	USER NAME = \$USER\$	DESIGNED - JRD	REVISED -
\$FILEL\$		DRAWN - MSK	REVISED -
	PLOT SCALE = \$SCALE\$	CHECKED - SLD	REVISED -
	PLOT DATE = \$DATE\$	DATE - 02/01/2013	REVISED -

STATE OF ILLINOIS
DEPARTMENT OF TRANSPORTATION

DISTRICT DETAILS

SCALE: N. T. S. SHEET NO. 4 OF 7 SHEETS STA. TO STA.

F.A.I. RTE.	SECTION	COUNTY	TOTAL SHEETS	SHEET NO.
57	(X1-6-2,X1-5,(X1-4-1BR-1)R-1	WILLIAMSON	202	116
CONTRACT NO. 78334			ILLINOIS FED. AID PROJECT	