

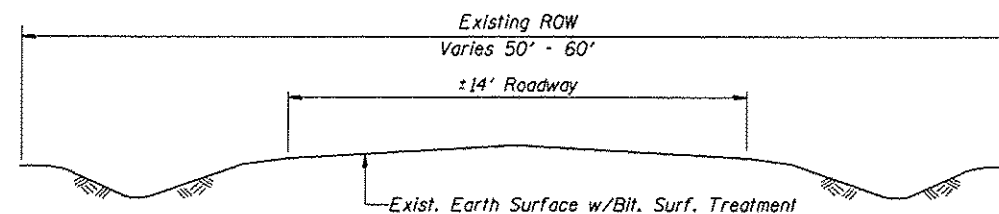
GENERAL NOTES

- WHERE SECTION OR SUBSECTION MONUMENTS ARE ENCOUNTERED, THE ENGINEER SHALL BE NOTIFIED BEFORE ANY SUCH MONUMENTS ARE REMOVED. THE CONTRACTOR SHALL PROTECT AND CAREFULLY PRESERVE ALL PROPERTY MARKS AND MONUMENTS UNTIL THE OWNER, AN AUTHORIZED SURVEYOR OR AGENT HAS WITNESSED OR OTHERWISE REFERENCED THEIR LOCATION.
- THE AREA TO BE SEEDED SHALL CONSIST OF ALL DISTURBED EARTH SURFACES WITHIN THE RIGHT OF WAY AS DIRECTED BY THE ENGINEER.

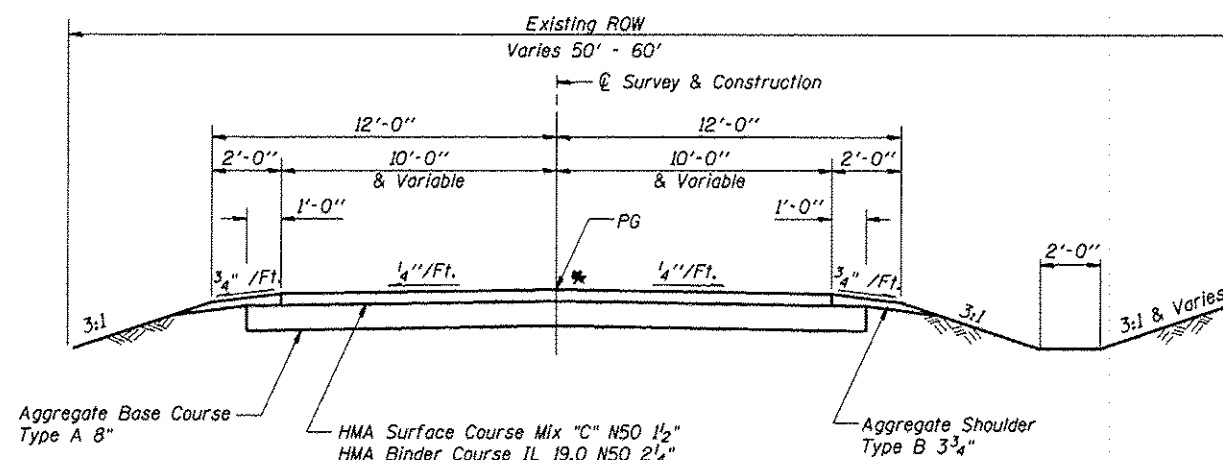
SEEDING CLASS 2 (SPECIAL) = 0.40 ACRE
- ALL ELEVATIONS SHOWN ON THE PLANS ARE BASED ON NORTH AMERICAN VERTICAL DATUM OF 1988 (NAVD88).
- THE LOCATIONS OF EXISTING WATER MAINS, GAS MAINS, ELECTRIC POWER LINES, TELEPHONE LINES, AND OTHER UTILITIES AS SHOWN ON THE PLANS ARE BASED ON CAREFUL FIELD INVESTIGATION AND THE BEST INFORMATION AVAILABLE, BUT ARE NOT GUARANTEED. IT SHALL BE THE CONTRACTOR'S RESPONSIBILITY TO ASCERTAIN THEIR EXACT LOCATION FROM THE UTILITY COMPANIES, MUNICIPALITIES AND FIELD INSPECTION. SEE STANDARD SPECIFICATIONS.
- THE FOLLOWING MIXTURE REQUIREMENTS ARE APPLICABLE FOR THIS PROJECT:

LOCATION	CH 10	CH 10
MIXTURE USE:	BINDER	SURFACE
PG:	PG 64-22	PG 64-22
DESIGN AIR VOIDS:	4.0% @ N _{des} = 50	4.0% @ N _{des} = 50
MIXTURE COMPOSITION: (GRADATION MIXTURE)	IL 19.0	IL 9.5 OR 12.5
FRICTION AGGREGATE:	N/A	MIX "C"

BRIDGE OMISSION
STA. 9+67.21 TO STA. 10+32.71



TYPICAL EXISTING ROADWAY CROSS SECTION



* & PAVEMENT MARKING BY OTHERS

Fill Section-Construct as Shown on Station Cross Sections

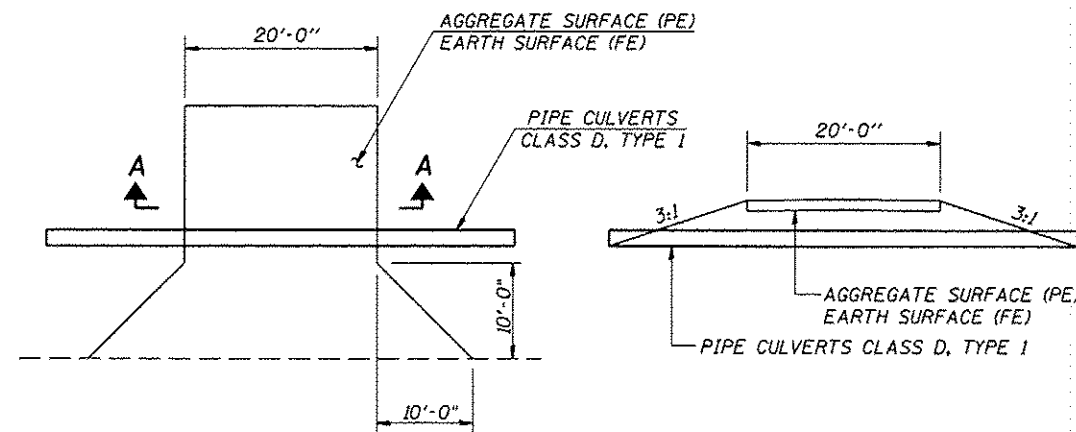
Cut Section-Construct as Shown on Station Cross Sections

TYPICAL PROPOSED ROADWAY CROSS SECTION

STA 5+75 TO STA 9+67.21
STA 10+32.79 TO STA 13+79
TRANSITION FROM EXISTING ROADWAY TO PROPOSED ROADWAY STA 5+00 TO STA 5+75
TRANSITION FROM PROPOSED ROADWAY TO EXISTING ROADWAY STA 13+79 TO STA 14+54

APPLICATION RATES USED IN QUANTITY CALCULATIONS

Granular Materials	2.05 Tons/Cu. Yd.
Riprap	1.50 Tons/Cu. Yd.
HMA	112 Lbs/Sq. Yd./1" Thickness
Bituminous Materials	0.30 Gallon/Sq. Yd.



PLAN

SECTION A-A

ENTRANCE DETAILS

93595