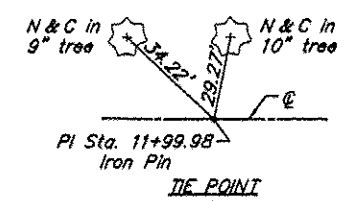
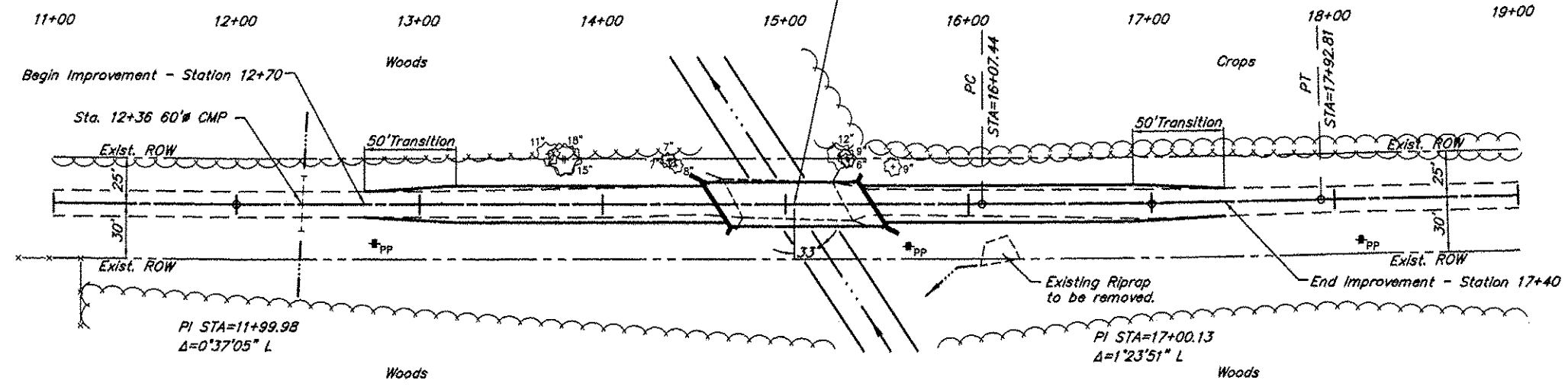


ROUTE	SECTION	COUNTY	TOTAL SHEETS	SHEET NO.
TR 308	06-04122-00-BR	FRANKLIN	12	2
PROJECT NO. BROS-055(53)			CONTRACT NO. 99307	

B.M. - Nail in Power Pole
 23' Rt. Station 15+67
 Assumed Elev. 425.00

Existing Structure - Precast reinforced concrete deck
 beams on closed concrete pile bent abutments.
 22.8' wide x 58.8' long

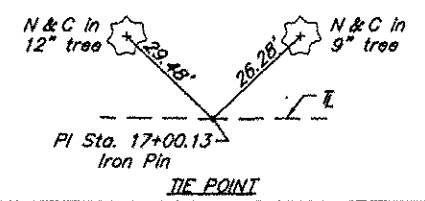
Station 15+04.7 - Single span precast
 prestressed concrete deck beam bridge
 86'-4 3/4" bk-bk Abutments.
 Skewed 33° Rt. Forward



TREE REMOVAL

Sta.	Offset	Dia.
14+36	24' Lt.	7"
14+37	24' Lt.	7"
14+40	21' Lt.	8"
15+34	24' Lt.	6"
15+59	20' Lt.	9"
Total		37"

CURVE DATA
 $\Delta = 1^{\circ}23'51''$ $T = 92.69'$
 $D = 0^{\circ}45'14''$ $L = 185.37'$
 $R = 7,600.00'$ $E = 0.57'$
 S.E. = Normal Crown



SCALES:
 1" = 80' HOR
 1" = 10' VER

