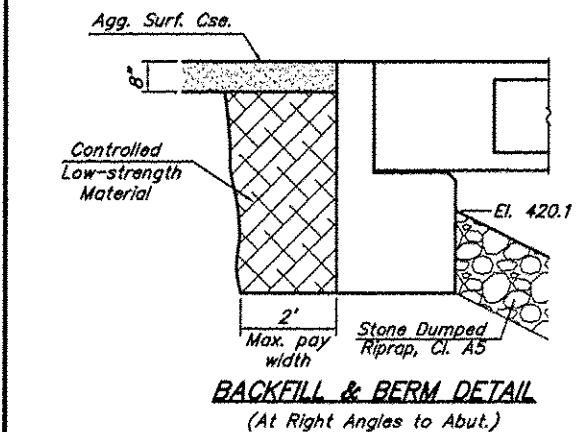
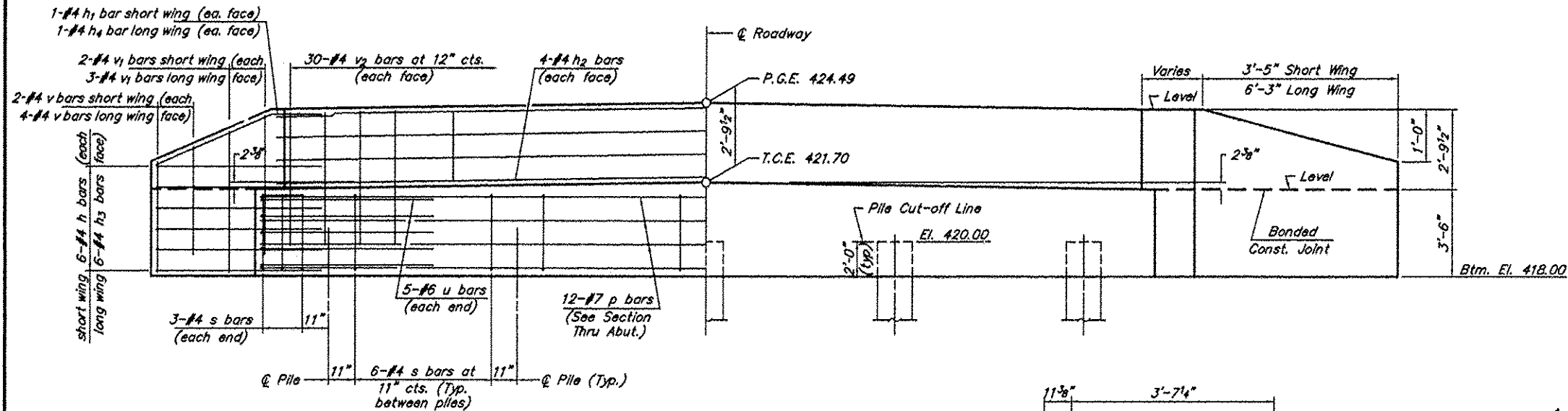
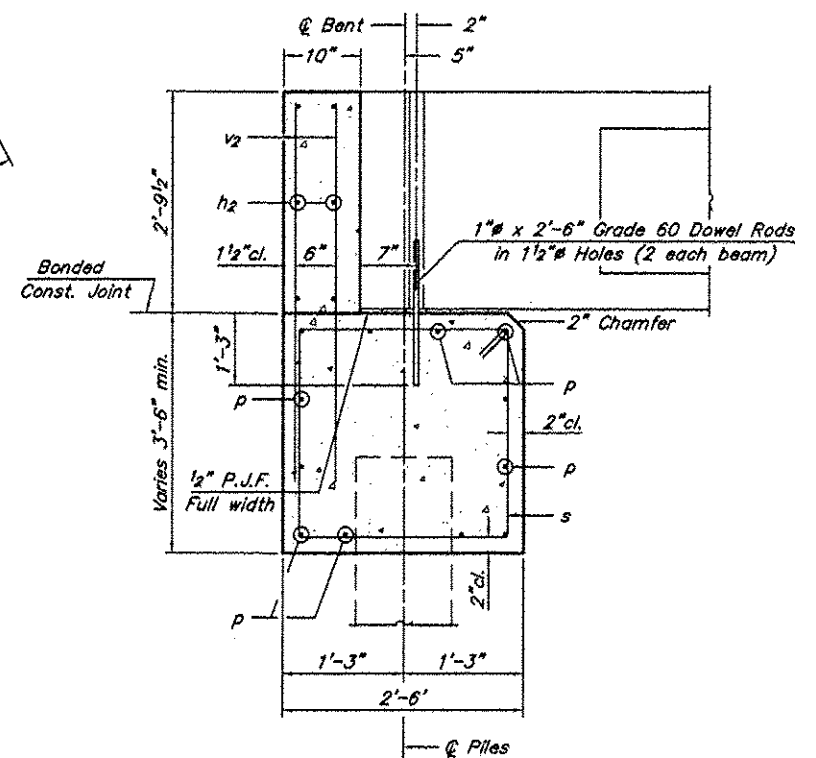
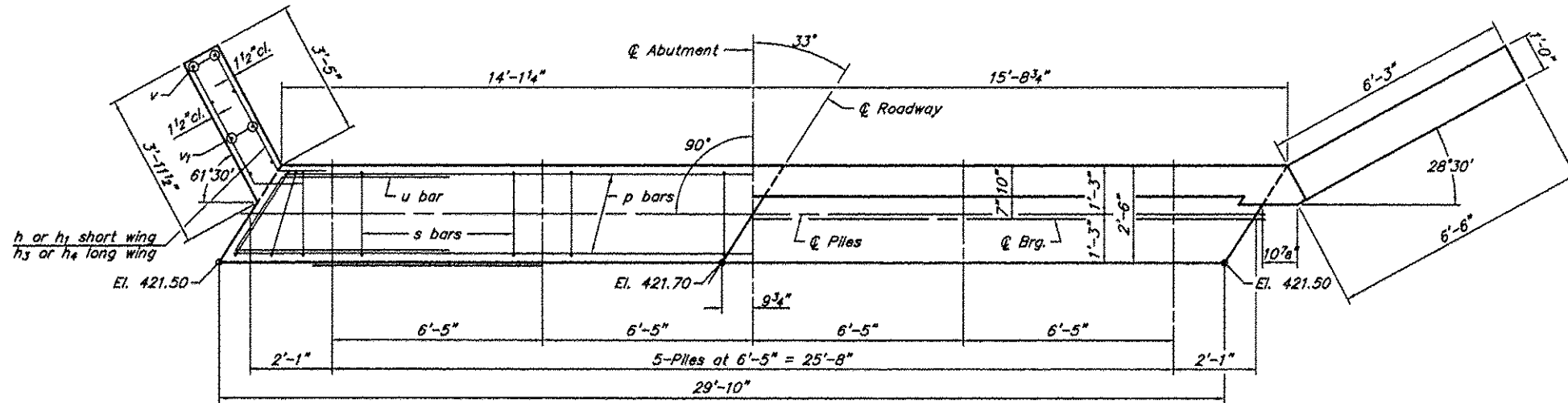
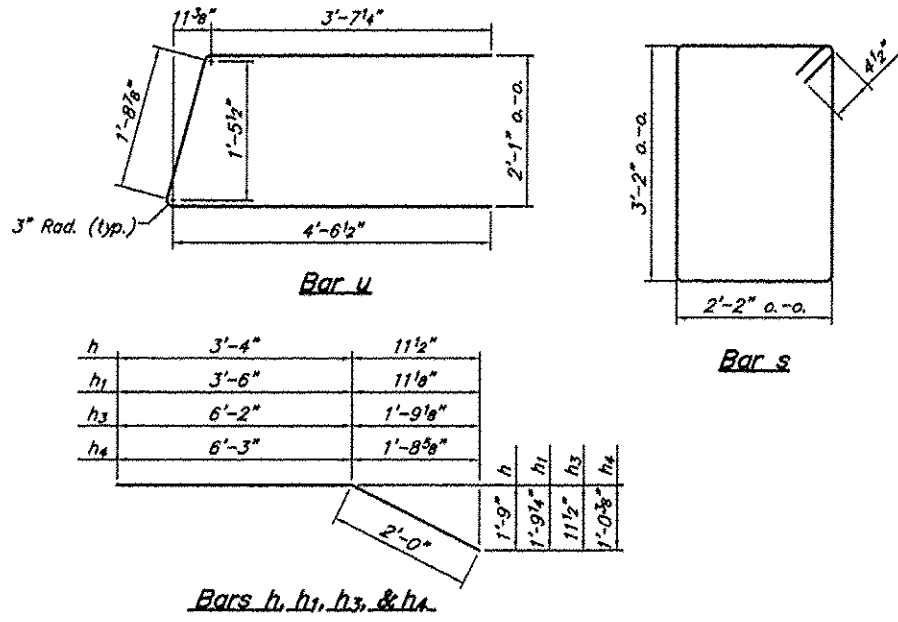


ROUTE	SECTION	COUNTY	TOTAL SHEETS	SHEET NO.
TR 308	06-04122-00-BR	FRANKLIN	12	8
PROJECT NO. BROS-055(53)			CONTRACT NO. 99307	



- NOTES**
- The Backwall and the portion of the Wingwalls above the bonded construction joint shall be cast against the in-place beam.
 - Reinforcement bars shall conform to A.A.S.H.T.O. M-31, M-42 or M-53, Grade 60.

DESIGN STRESSES
 $f'_c = 3,500 \text{ psi}$
 $f_y = 60,000 \text{ psi}$



BILL OF MATERIAL FOR ONE ABUTMENT

Bar	No.	Size	Length	Shape
h	12	#4	5'-4"	
h ₁	2	#4	5'-6"	
h ₂	8	#4	29'-6"	
h ₃	12	#4	8'-2"	
h ₄	2	#4	8'-3"	
P	12	#7	29'-6"	
s	30	#4	11'-5"	
u	10	#6	10'-8"	
v	12	#4	5'-1"	
v ₁	10	#4	5'-8"	
v ₂	60	#4	4'-5"	
Concrete Structures			14.8	Cu. Yds.
Reinforcement Bars			1,652	Lbs.

ABUTMENT
 TOWNSHIP ROUTE 308 (HANAGAN ROAD)
 EWING CREEK
 SECTION 06-04122-00-BR
 FRANKLIN COUNTY
 STRUCTURE NO. 028-3407