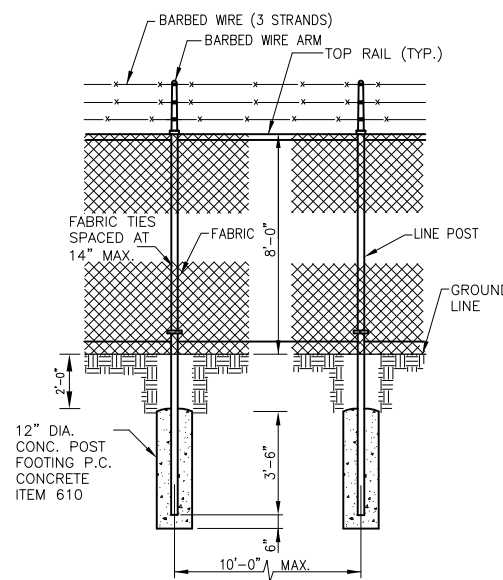
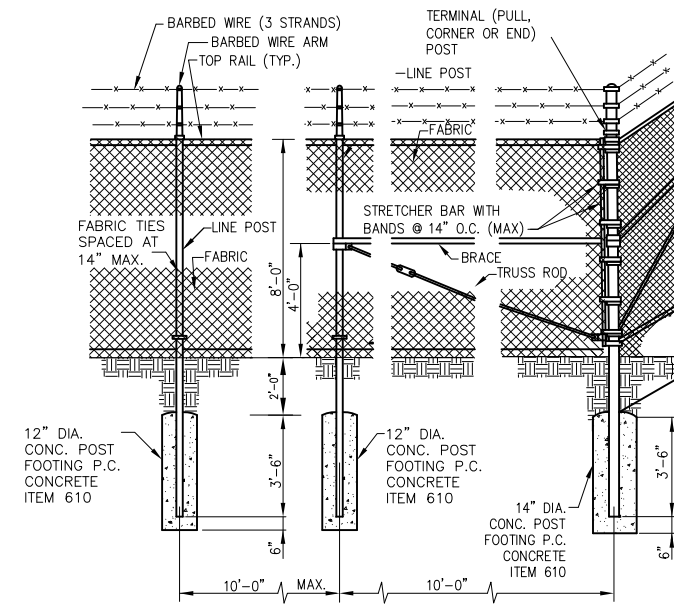


PROTECTIVE ELECTRICAL GROUND



LINE POST



TERMINAL (PULL, CORNER OR END) POST

FENCING NOTES

- ALL FENCE, FABRIC, POSTS, GATES, TENSION WIRE, RODS, BRACES, ARMS, BARBED WIRE AND MISCELLANEOUS FITTINGS SHALL BE GALVANIZED STEEL.
- BARBED WIRE FOR FENCE AND GATES SHALL BE GALVANIZED STEEL.
- PULL POSTS SHALL BE PLACED AT 660 FOOT INTERVALS BETWEEN CORNER OR END POSTS TO WHICH THE ENDS OF THE FABRIC ARE CLAMPED OR MIDWAY BETWEEN SUCH POSTS WHEN THE DISTANCE IS LESS THAN 1,320 FEET AND GREATER THAN 660 FEET.
- ALUMINUM RESTRICTED AREA SIGNS SHALL BE FURNISHED AS SHOWN IN THE DETAIL. COST INCIDENTAL TO FENCE OR GATE.
- SONOTUBE TO BE USED FOR CASTING POST FOUNDATIONS IN WETLAND AREAS AND WHERE REQUIRED BY THE SOIL CONDITIONS TO PROVIDE A CONSTANT WIDTH FOOTING
- SEE SPECIAL PROVISIONS.

LINE POST	
Section	lbs./ft. (kg/m)
Pipe Type A 2.375 (60.3) O.D.	4.64 (6.90)
Pipe Type B 2.375 (60.3) O.D.	4.64 (6.90)
Pipe Type C 2.25x1.7 (57.2x43.2)	2.78 (4.14)
H 2.25x1.70 (57.2x43.2)	2.72 (4.05)

TERMINAL POST	
Section	lbs./ft. (kg/m)
Pipe Type A 2.875 (73.0) O.D.	4.64 (6.90)
Pipe Type B 2.875 (73.0) O.D.	4.64 (6.90)
Pipe Type C 3.5x3.5 (89.0x89.0)	5.10 (7.59)
Roll Formed 3.5x3.5 (89.0x89.0)	See detail
Sq. Tubing 2.5x2.5 (63.5x63.5)	5.10 (7.59)

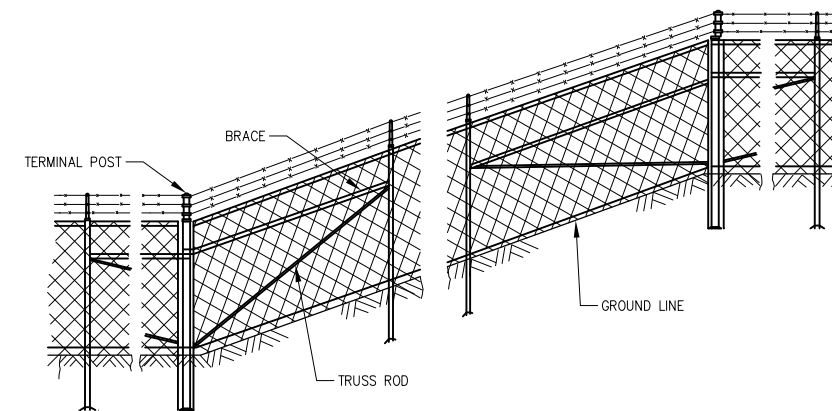
HORIZONTAL BRACES	
Section	lbs./ft. (kg/m)
Pipe Type A 1.66 (42.2) O.D.	2.27 (3.38)
Pipe Type B 1.66 (42.2) O.D.	1.83 (2.72)
Pipe Type C 1.66 (42.2) O.D.	1.82 (2.71)
H 1.31x1.5 (33.3x38.1)	2.25 (3.35)
Roll Formed 1.625x1.25 (41.3x31.8)	See detail

GATE FRAMES	
Section	lbs./ft. (kg/m)
Pipe Type A 1.66 (42.2) O.D.	2.27 (3.38)
Pipe Type B 1.66 (42.2) O.D.	1.83 (2.72)
Pipe Type C 1.66 (42.2) O.D.	1.82 (2.71)

GATE POSTS *				
Gate Opening * ft. (m)	Pipe Type A		Pipe Type B	
	Size (O.D.)	lbs./ft. (kg/m)	Size (O.D.)	kg/m (lbs./ft.)
Over 12 (3.75) but not over 30 (9.375)	4.0 (101.6)	9.11 (13.6)	4.0 (101.6)	9.11 (13.6)

* The 3.5x3.5 (89.0 x 89.0) roll formed section as detailed may be used as gate posts for single gate up to 6' (1.8 m) and double gate up to 12' (3.6 m).

WEIGHTS FOR STANDARD STEEL PIPE ARE SHOWN IN THE TABLE. FOR HIGH STRENGTH PIPE AT LIGHTER WEIGHTS, CONTRACTOR SHALL SUBMIT COMPARATIVE DESIGN DATA SHOWING ADDITIONAL STRENGTH ALLOWS REDUCTION IN PIPE WEIGHT.



INSTALLATION ON SLOPES

REVISION

DATE

MT. VERNON AIRPORT



SBG PROJ.: 3-17-0074-B27
IL PROJ.: MW-4197

Hanson Project No. 12A0044D
Filename 24-C-500-FEN.DWG
Scale N/A
Date 3/1/13

LAYOUT	LDH	12/17/12
DRAWN	LDH	12/17/12
REVIEWED	BSS	2/21/13



© Copyright Hanson Professional Services Inc. 2013
Hanson Professional Services Inc.
1525 So. Main Street
Springfield, Illinois 62703-2886

CONSTRUCT APRON AND TAXIWAY IN SOUTH FRONTAL AREA

FENCING NOTES AND DETAILS