

STATE OF ILLINOIS
DEPARTMENT OF TRANSPORTATION

FAI RTE.	SECTION	COUNTY	TOTAL SHEETS	SHEET NO.
72	(86-8) BDR, BJR, BRR	SCOTT	9	1
			CONTRACT NO. 72L09	

D-96-031-19

FOR INDEX OF SHEETS, SEE SHEET NO. 2

PROPOSED HIGHWAY PLANS

FAI ROUTE 72 (I-72)
SECTION (86-8) BDR, BJR, BRR

BRIDGE DECK PATCHING
SCOTT COUNTY

C-96-042-19

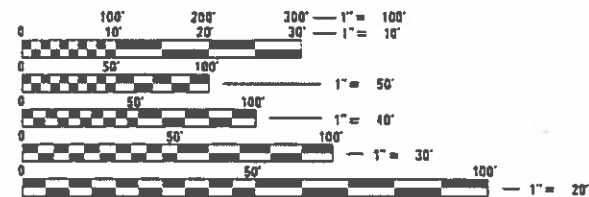


PROJECT LOCATION:
 SN 086-0042
 FAI 72 EB
 2.6 MI. W. IL 100 INT.
 N39.6918° W90.61972188°

SN 086-0043
 FAI 72 WB
 2.6 MI. W. IL 100 INT.
 N39.69179961° W90.61991453°

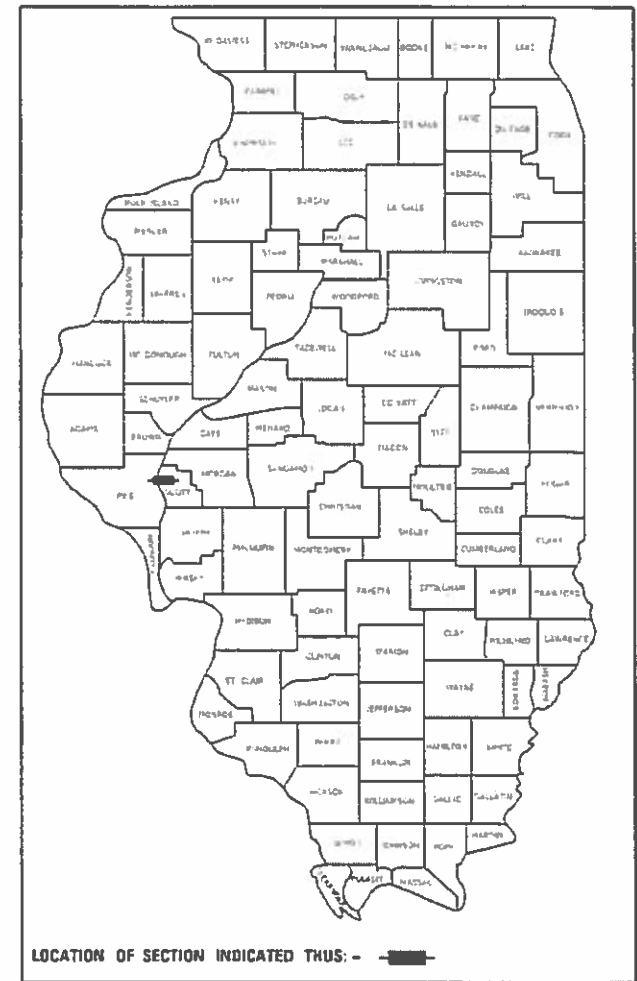
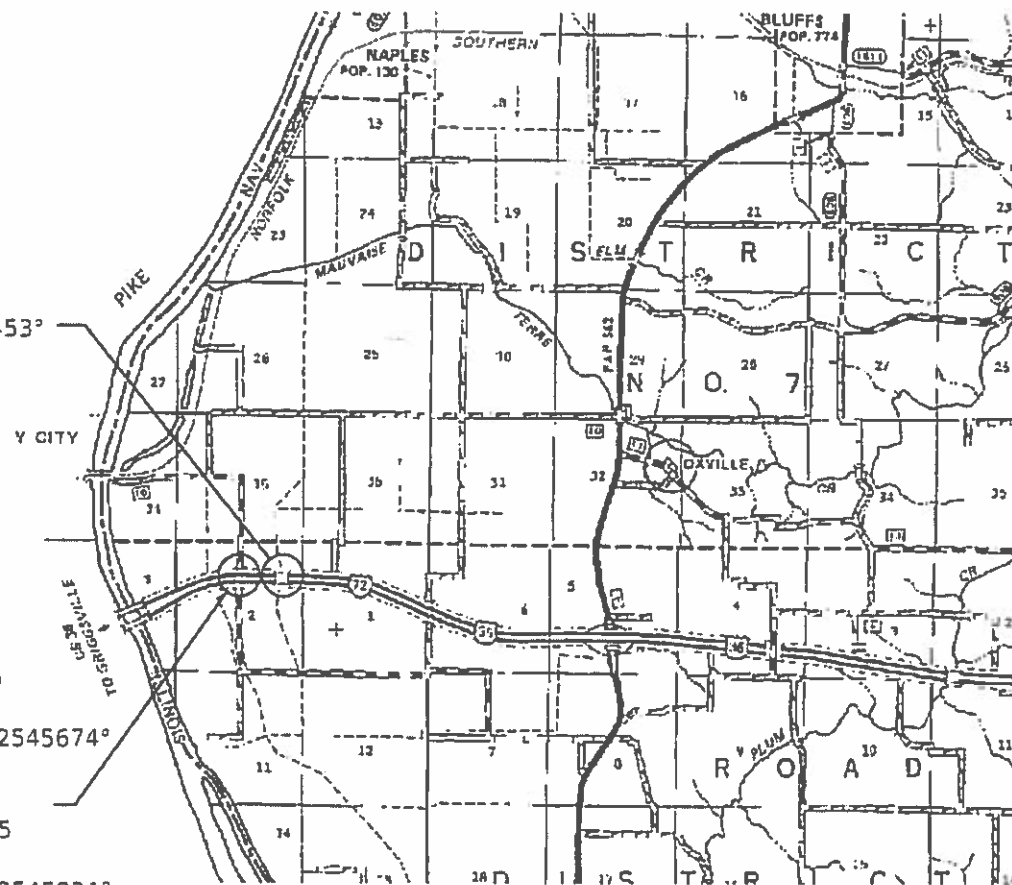
PROJECT LOCATION:
 SN 086-0040
 FAI 72 EB OVER TR 55
 2.9 MI. W. IL 100 INT.
 N39.69164272° W90.62545674°

SN 086-0041
 FAI 72 WB OVER TR 55
 2.9 MI. W. IL 100 INT.
 N39.69201607° W90.62545921°



FULL SIZE PLANS HAVE BEEN PREPARED USING STANDARD ENGINEERING SCALES. REDUCED SIZED PLANS WILL NOT CONFORM TO STANDARD SCALES. IN MAKING MEASUREMENTS ON REDUCED PLANS, THE ABOVE SCALES MAY BE USED.

J.U.L.I.E.
 JOINT UTILITY LOCATION INFORMATION FOR EXCAVATORS
 1-800-892-0123
 OR 811



STATE OF ILLINOIS
 DEPARTMENT OF TRANSPORTATION

SUBMITTED 1 February 2019
[Signature] REGIONAL ENGINEER

March 22 2019
[Signature] ENGINEER OF DESIGN AND ENVIRONMENT

March 22 2019
[Signature] DIRECTOR OF HIGHWAYS PROJECT IMPLEMENTATION

BRIDGE MAINTENANCE ENGINEER: BRANDON DUDLEY (217) 785-9290
 DESIGNER: HECTOR E. RIVERA RAMOS (217) 524-5010

GROSS LENGTH = x.xx FT. = x.xxx MILE
 NET LENGTH = x.xx FT. = x.xxx MILE

PRINTED BY THE AUTHORITY
 OF THE STATE OF ILLINOIS

INDEX OF SHEETS

- 1 COVER SHEET
- 2 INDEX, STANDARDS, GENERAL NOTES
- 3 SUMMARY OF QUANTITIES
- 4 MAX WIDTH SIGNING DETAIL
- 5-9 BRIDGE PLANS

HIGHWAY STANDARDS

- 000001-07
- 001006
- 701101-05
- 701106-02
- 701400-09
- 701401-12
- 701901-08

TITLE

STANDARD SYMBOLS, ABBREVIATIONS AND PATTERNS
 DECIMAL OF AN INCH AND OF A FOOT
 OFF-RD OPERATIONS, MULTILANE, 15' (4.5m) TO 24' (600mm) FROM PAVEMENT EDGE
 OFF-RD OPERATIONS, MULTILANE, MORE THAN 15' (4.5m) AWAY
 APPROACH TO LANE CLOSURE, FREEWAY/EXPRESSWAY
 LANE CLOSURE, FREEWAY/EXPRESSWAY
 TRAFFIC CONTROL DEVICES

GENERAL NOTES:

FULL DEPTH DECK REPAIRS SHALL BE COVERED WITH STEEL PLATES OVERNIGHT
 AREAS OF DECK REPAIRS SHOWN ARE ESTIMATED. THE ENGINEER SHALL SHOW ACTUAL LOCATIONS OF DECK REPAIRS ON AS-BUILT PLANS.
 PLAN DIMENSIONS AND DETAILS RELATIVE TO EXISTING PLANS ARE SUBJECT TO NOMINAL CONSTRUCTION VARIATIONS. THE CONTRACTOR SHALL FIELD VERIFY EXISTING DIMENSIONS AND DETAILS AFFECTING NEW CONSTRUCTION AND MAKE NECESSARY APPROVED ADJUSTMENTS PRIOR TO CONSTRUCTION OR ORDERING OF MATERIALS. SUCH VARIATIONS SHALL NOT BE CAUSE FOR ADDITIONAL COMPENSATION FOR A CHANGE IN THE SCOPE OF WORK, HOWEVER, THE CONTRACTOR WILL BE PAID FOR THE QUANTITY ACTUALLY FURNISHED AT THE UNIT PRICE BID FOR THE WORK.

STATE OF ILLINOIS
DEPARTMENT OF TRANSPORTATION
DIVISION OF HIGHWAYS
DISTRICT 6

EXAMINED	<i>25 January</i>	20	<i>15</i>
	<i>[Signature]</i>		ENGINEER OF OPERATIONS
EXAMINED	<i>25 January</i>	20	<i>15</i>
	<i>[Signature]</i>		ENGINEER OF PROJECT IMPLEMENTATION
EXAMINED	<i>January 25</i>	20	<i>19</i>
	<i>[Signature]</i>		ENGINEER OF PROGRAM DEVELOPMENT

USER NAME = dudleyjm	DESIGNED -
PLOT SCALE = 480 0000 / 1 in.	DRAWN -
PLOT DATE = 2/1/2019	CHECKED -
	DATE -
	REVISED -
	REVISED -
	REVISED -

STATE OF ILLINOIS
DEPARTMENT OF TRANSPORTATION

INDEX OF SHEETS, GENERAL NOTES
 & HIGHWAY STANDARDS

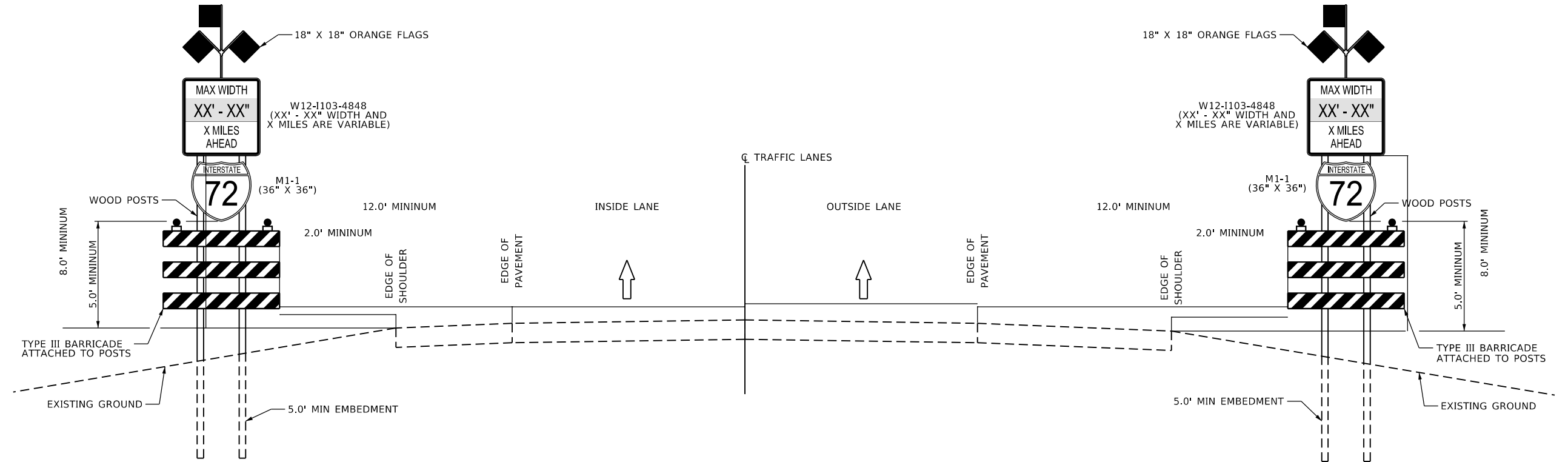
PAGE	72	SECTION	185-B BDR, BIR, BRR	COUNTY	SCOTT	TOTAL SHEETS	9	SHEET NO.	2
				CONTRACT NO. 72L09		ILLINOIS / FED. AID PROJECT			

MODEL: C:\Program Files\Autodesk\AutoCAD 2019\acadiso.plt
 FILE NAME: C:\OPERATIONS\Bridges\BridgesPlans\CAD\72L09 - 172 - patching - Scott\0672XX\172-BRIDGE DECK PATCHING.dwg

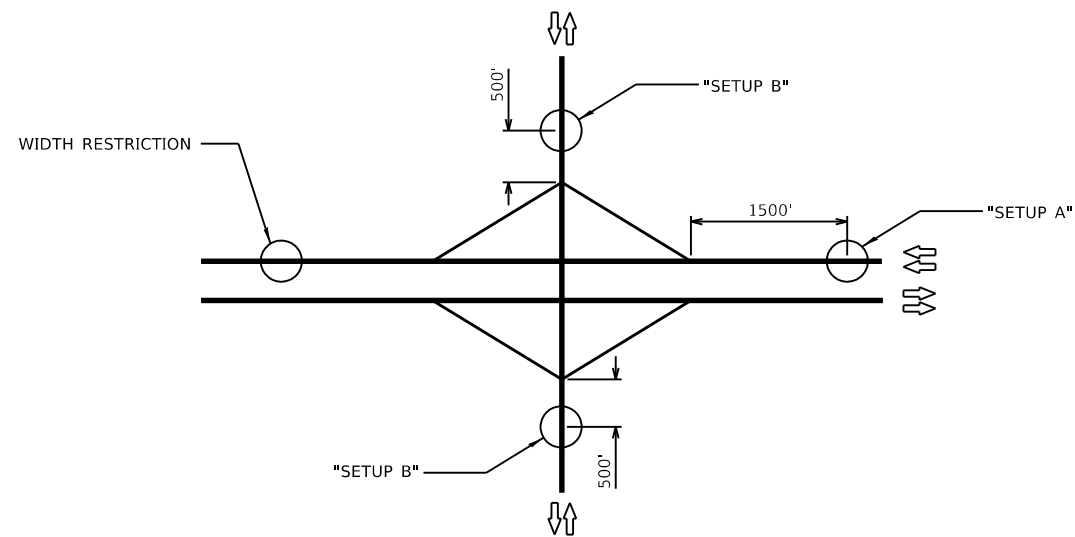
					PPS 0-01625-6024			
					100% STATE			
CODE NO.	ITEM	UNIT	TOTAL QUANTITY	BRIDGE 0047				
67100100	MOBILIZATION	L SUM	1	1				
70100205	TRAFFIC CONTROL AND PROTECTION, STANDARD 701401	EACH	2	2				
X0327501	ATTENUATOR, CRASH (TRUCK MOUNTED)	HOUR	250	250				
X7200201	WIDTH RESTRICTION SIGNING	L SUM	1	1				
Z0001800	APPROACH SLAB REPAIR (PARTIAL DEPTH)	SQ YD	33	33				
Z0016001	DECK SLAB REPAIR (FULL DEPTH, TYPE I)	SQ YD	1	1				
Z0016002	DECK SLAB REPAIR (FULL DEPTH, TYPE II)	SQ YD	19	19				
Z0016200	DECK SLAB REPAIR (PARTIAL)	SQ YD	140	140				
Z0021914	SILICONE JOINT SEALER, 2.75"	FOOT	176	176				

REV. - MS

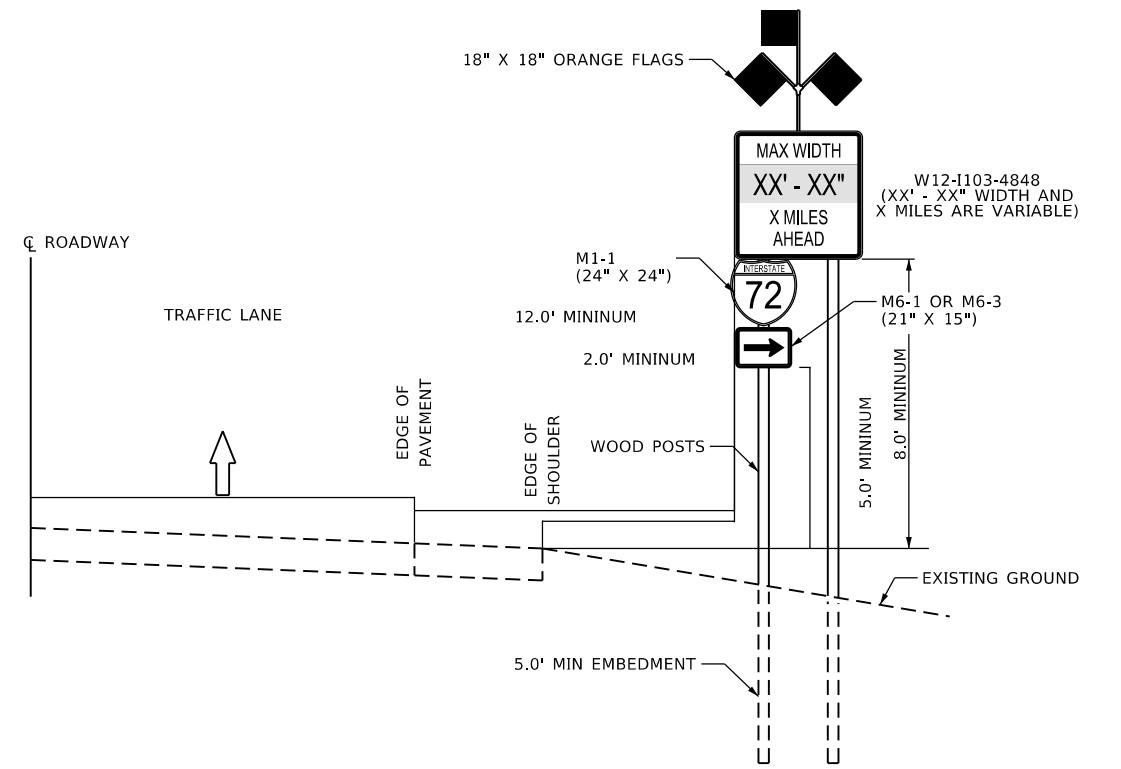
USER NAME = dudleybm	DESIGNED -	REVISED -	STATE OF ILLINOIS DEPARTMENT OF TRANSPORTATION	SUMMARY OF QUANTITIES				F.A.I. RTE.	SECTION	COUNTY	TOTAL SHEETS	SHEET NO.
PLOT SCALE = 40.0000' / in.	DRAWN -	REVISED -						72	(86-8) BDR, BJR, BRR	SCOTT	9	3
PLOT DATE = 2/1/2019	CHECKED -	REVISED -		SCALE:	SHEET	OF	SHEETS	STA.	TO	STA.	ILLINOIS FED. AID PROJECT	
	DATE -	REVISED -									CONTRACT NO. 72L09	



**"SETUP A" - WIDTH RESTRICTION SIGN
INTERSTATE AND EXPRESSWAYS
MAINLINE PAVEMENT**



**TYPICAL INTERSTATE INTERCHANGE SIGNING LAYOUT PLAN
SEE SPECIAL PROVISIONS FOR ADDITIONAL DETAILS**



**"SETUP B" - WIDTH RESTRICTION SIGN
CONVENTIONAL ROADWAYS**

MODEL Default
FILE NAME: C:\OPERATIONS\bridge\bridgeplans_CAD\72L09 - 172_patchlog - Scott\0672XX\72-09\BRIDGE_DECK_PATCHING.dgn

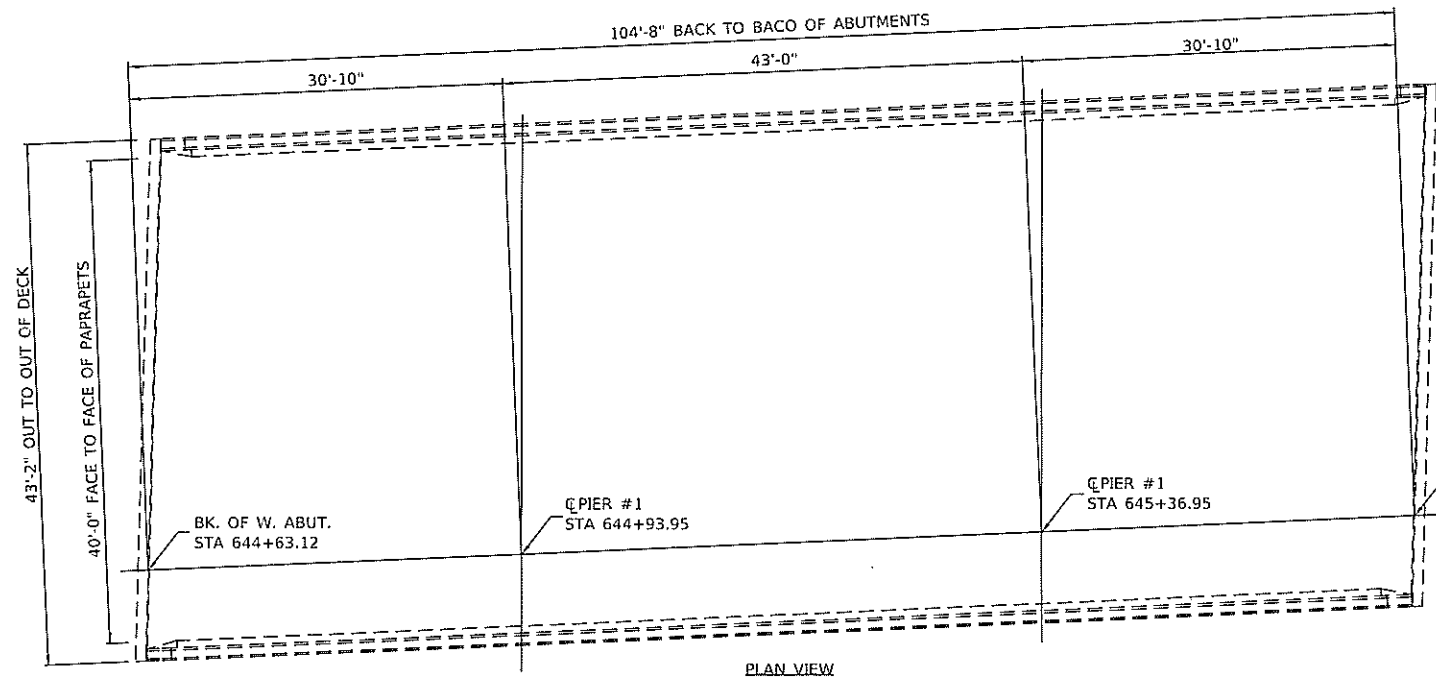
USER NAME = dudleybm	DESIGNED -	REVISED -
	DRAWN -	REVISED -
PLOT SCALE = 40.0000 ' / in.	CHECKED -	REVISED -
PLOT DATE = 2/1/2019	DATE -	REVISED -

**STATE OF ILLINOIS
DEPARTMENT OF TRANSPORTATION**

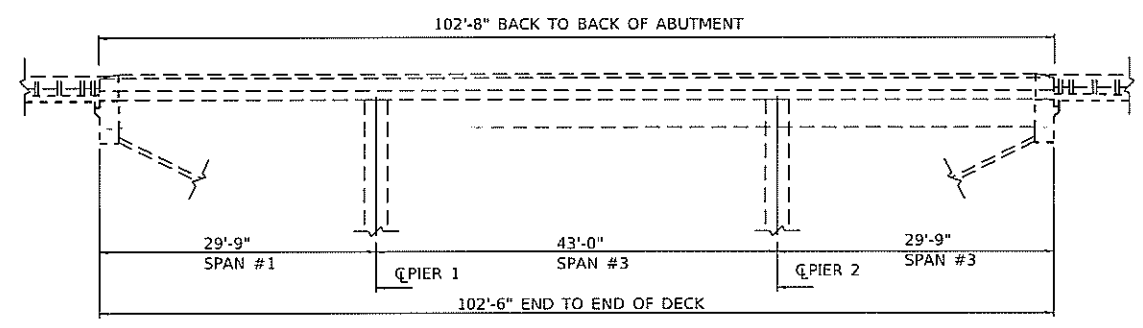
MAX WIDTH SIGNING DETAIL

SCALE: SHEET OF SHEETS STA. TO STA.

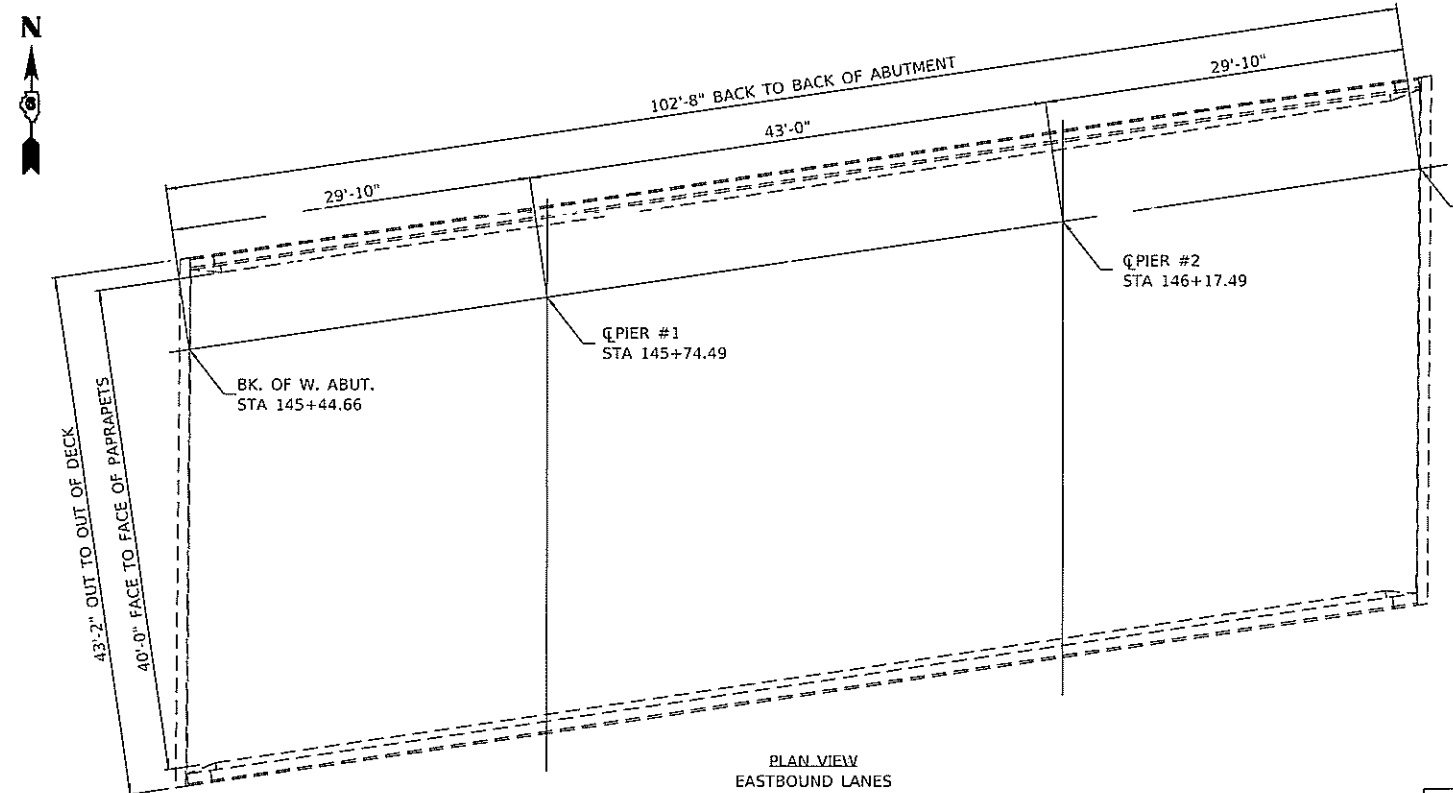
F.A.I. RTE.	SECTION	COUNTY	TOTAL SHEETS	SHEET NO.
72	(86-8) BDR, BJR, BRR	SCOTT	9	4
CONTRACT NO. 72L09				
ILLINOIS FED. AID PROJECT				



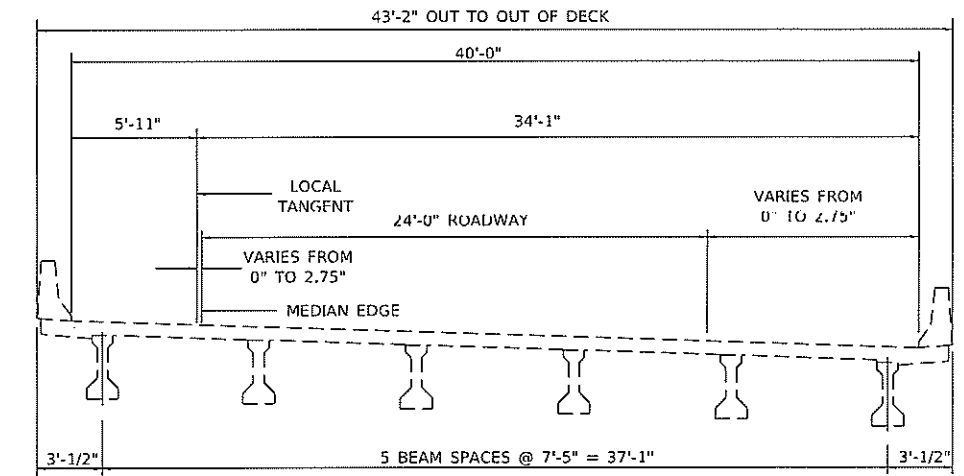
PLAN VIEW WESTBOUND LANES



EASTBOUND LANES ELEVATION (LOOKING NORTH)



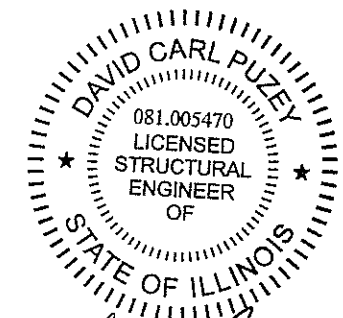
PLAN VIEW EASTBOUND LANES



CROSS SECTION (LOOKING EAST)

BILL OF MATERIAL - SN. 086-0040/086-0041

ITEM	UNIT	TOTAL QUANTITY
APPROACH SLAB REPAIR (PARTIAL DEPTH)	SQ YD	20
DECK SLAB REPAIR (PARTIAL DEPTH)	SQ YD	6



David Carl Puzey 3/25/19
Expires 6/30/20

MODEL: D:\dwg\11\OPERATIONS\Bridges\Bridges.dwg - 172 - patching - Scanned\0522\KX112-GRIDGE DECK PATCHING.dwg

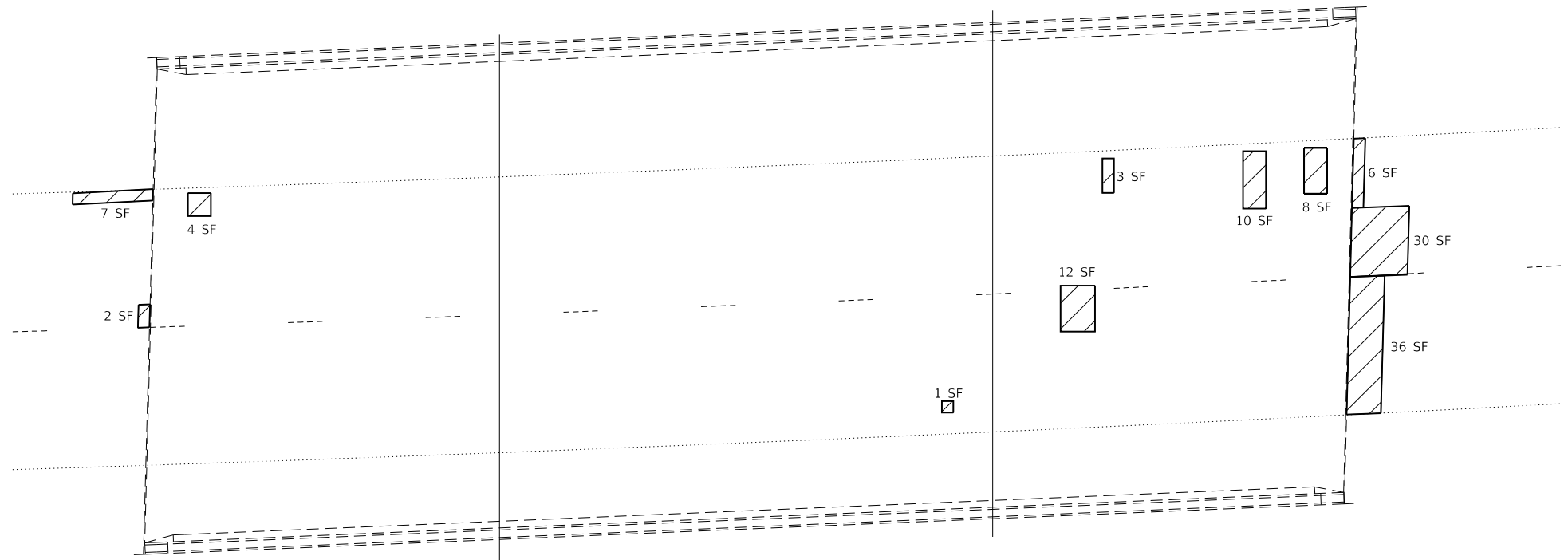
USER NAME = dudleybm	DESIGNED - BAD	REVISED -
PLOT SCALE = 40.0000' / in.	DRAWN -	REVISED -
PLOT DATE = 2/1/2019	CHECKED - HRR	REVISED -
	DATE -	REVISED -

STATE OF ILLINOIS
DEPARTMENT OF TRANSPORTATION

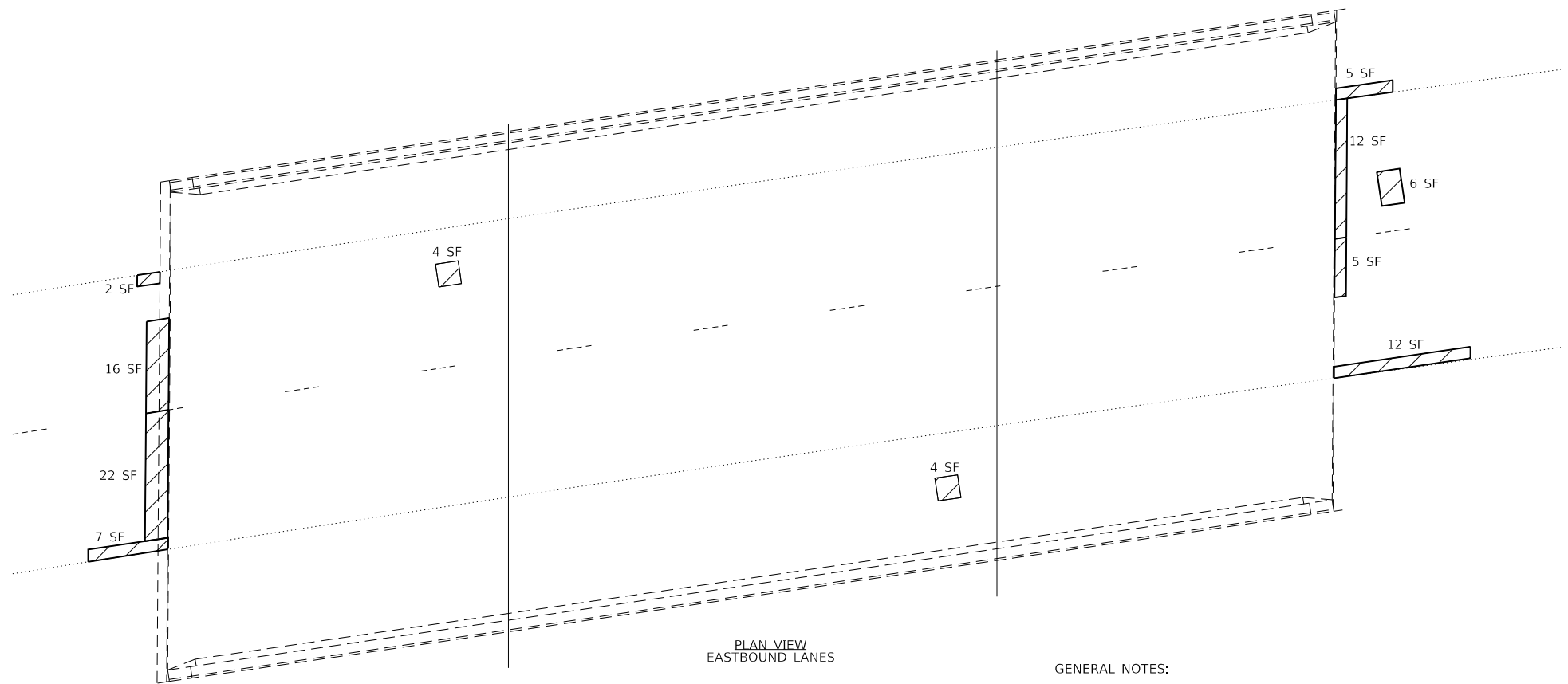
GENERAL PLAN, ELEVATION & CROSS SECTION
SN 086-0040 / 086-0041

F.A.I. RTE.	SECTION	COUNTY	TOTAL SHEETS	SHEET NO.
72	(86-8) BDR, BIR, BRR	SCOTT	9	5
CONTRACT NO. 72L09			ILLINOIS FED. AID PROJECT	

SCALE: SHEET OF SHEETS STA. TO STA.



PLAN VIEW
WESTBOUND LANES



PLAN VIEW
EASTBOUND LANES

- PARTIAL DEPTH PATCHING
- FULL DEPTH PATCHING

GENERAL NOTES:

THE PATCH SIZES AND LOCATIONS SHOWN ON THE PLAN SHEET ARE ESTIMATED. THE FINAL PATCH LOCATIONS SHALL BE DETERMINED BY THE ENGINEER IN THE FIELD.

WHILE PATCHING ADJACENT TO STEEL JOINT NOSINGS, THE CONTRACTOR SHALL TAKE CARE NOT TO DAMAGE THE EXISTING STUDS ATTACHED TO THE STEEL PLATES. ANY STUDS THAT ARE DAMAGED SHALL BE REPLACED WITH NEW 8" STUDS CONFORMING TO ARTICLE 1006.32, OR ALTERNATE ANCHORING DEVICE APPROVED BY THE ENGINEER. NO ADDITIONAL COMPENSATION WILL BE ALLOWED FOR REPAIRING ANCHORING STUDS DAMAGED BY THE CONTRACTOR'S ACTIVITIES.

MODEL: Default
FILE NAME: C:\OPERATIONS\bridge\bridgeplans_CAD\72L09 - 172_patching - Scott\0672XXX\72-BRIDGE DECK PATCHING.dwg

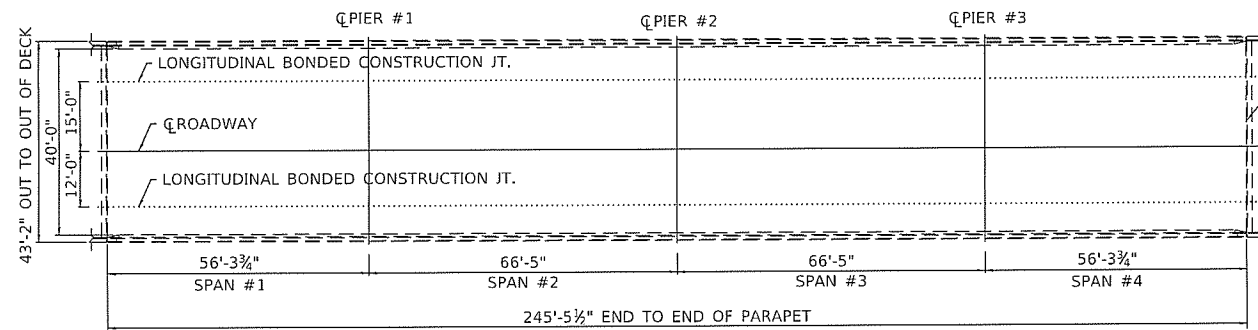
USER NAME = dudleybm	DESIGNED -	REVISED -
	DRAWN -	REVISED -
PLOT SCALE = 40,0000 ' / in.	CHECKED -	REVISED -
PLOT DATE = 2/1/2019	DATE -	REVISED -

**STATE OF ILLINOIS
DEPARTMENT OF TRANSPORTATION**

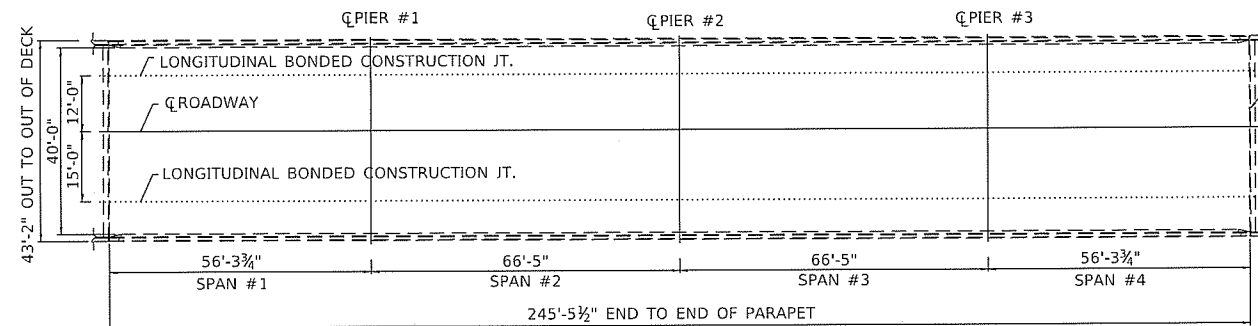
**PATCHING PLAN
SN 086-0040 / 086-0041**

SCALE: SHEET OF SHEETS STA. TO STA.

F.A.I. RTE.	SECTION	COUNTY	TOTAL SHEETS	SHEET NO.
72	(86-8) BDR, BJR, BRR	SCOTT	9	6
				CONTRACT NO. 72L09
		ILLINOIS	FED. AID PROJECT	



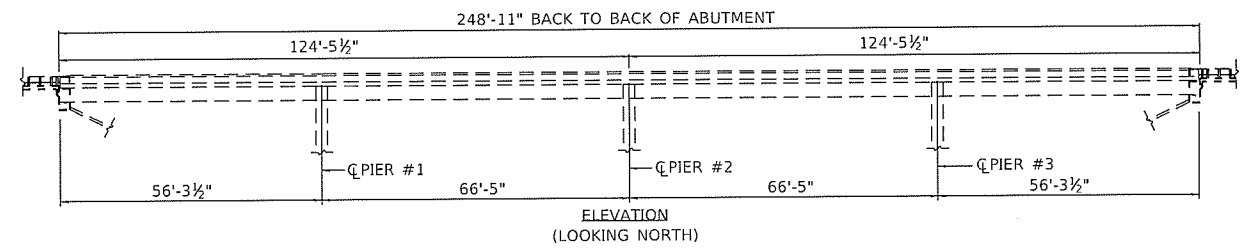
PLAN VIEW (086-0042)
WEST BOUND LANES



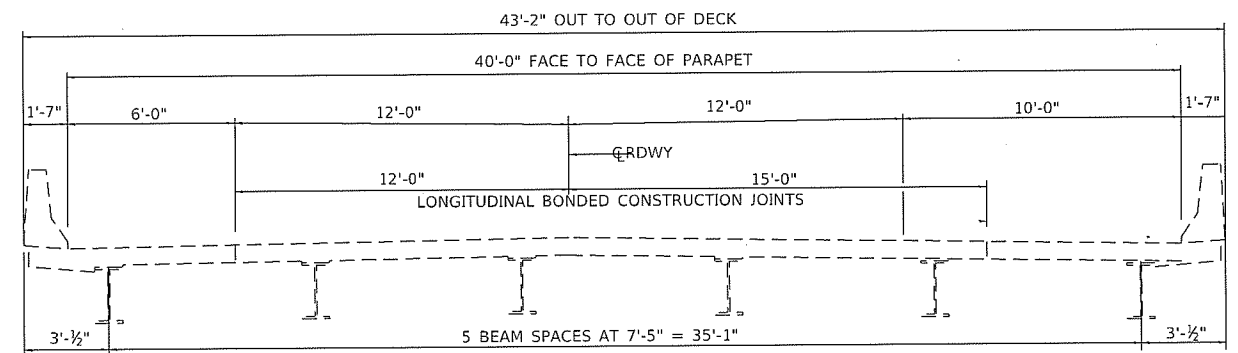
PLAN VIEW (086-0043)
EAST BOUND LANES

PR SILICONE JOINT SEALER 2 3/4"
@ 50°F (BOTH JOINTS)

PR SILICONE JOINT SEALER 2 3/4"
@ 50°F (BOTH JOINTS)

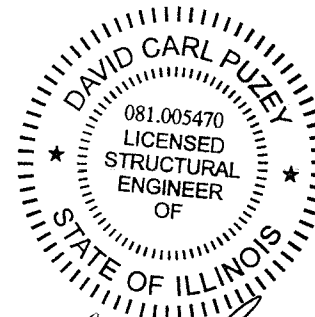


ELEVATION
(LOOKING NORTH)



CROSS SECTION

BILL OF MATERIAL - SN. 086-0042/086-0043		
ITEM	UNIT	TOTAL QUANTITY
APPROACH SLAB REPAIR (PARTIAL DEPTH)	SQ YD	13
DECK SLAB REPAIR (PARTIAL DEPTH)	SQ YD	134
DECK SLAB REPAIR (FULL DEPTH, TYPE I)	SQ YD	1
DECK SLAB REPAIR (FULL DEPTH, TYPE II)	SQ YD	19
SILICONE JOINT SEALER, 2.75"	FOOT	176



Dr. Carl Puzey 3/21/19
Expires 11/30/20

NOTES:

DECK REPAIR AREAS SHOWN ON FOLLOWING PAGE.

PLAN DIMENSIONS AND DETAILS RELATIVE TO EXISTING PLANS ARE SUBJECT TO NOMINAL CONSTRUCTION VARIATIONS. THE CONTRACTOR SHALL FIELD VERIFY EXISTING DIMENSIONS AND DETAILS AFFECTING NEW CONSTRUCTION AND MAKE NECESSARY APPROVED ADJUSTMENTS PRIOR TO CONSTRUCTION OR ORDERING OF MATERIALS. SUCH VARIATIONS SHALL NOT BE CAUSE FOR ADDITIONAL COMPENSATION FOR A CHANGE IN THE SCOPE OF WORK. HOWEVER, THE CONTRACTOR WILL BE PAID FOR THE QUANTITY ACTUALLY FURNISHED AT THE UNIT PRICE BID FOR THE WORK.

MODEL: Default
FILE NAME: C:\OPERATIONS\Bridges\Bridges\CAD\72109 - 172 - atching - Scott\106722XX\172-BRIDGE DECK PA' CHING.dgn

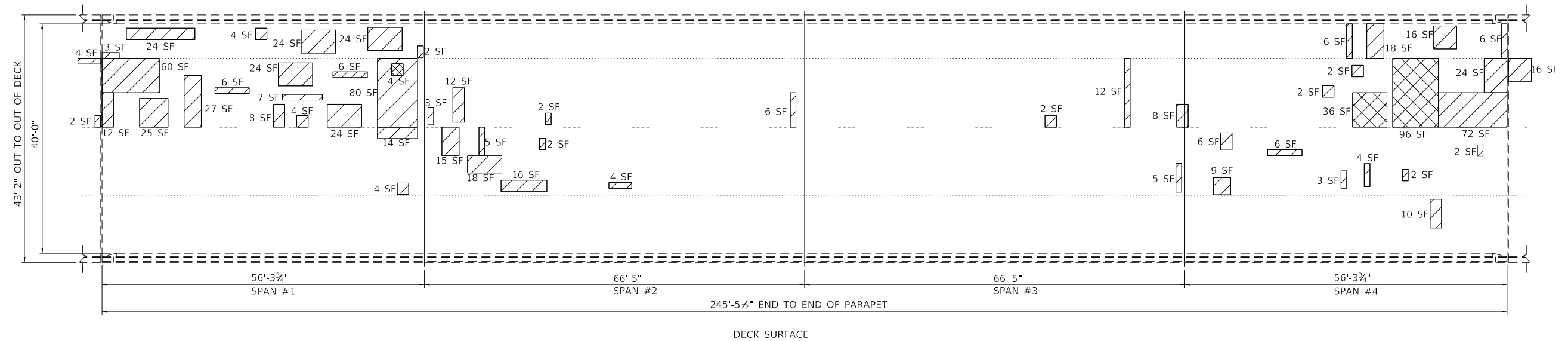
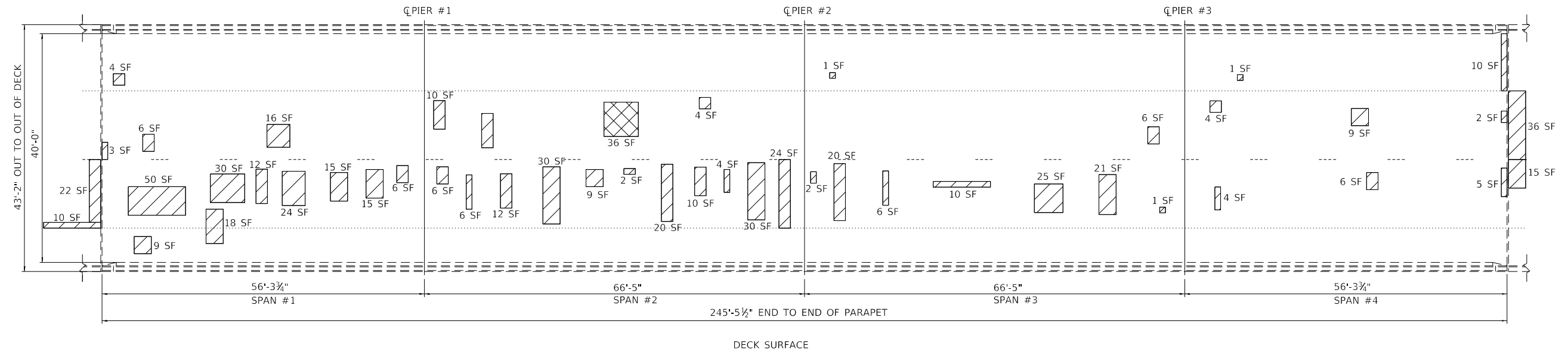
USER NAME = dtudleybm	DESIGNED -	REVISED -
PLOT SCALE = 40,0000' / in.	DRAWN -	REVISED -
PLOT DATE = 2/1/2019	CHECKED -	REVISED -
	DATE -	REVISED -

STATE OF ILLINOIS
DEPARTMENT OF TRANSPORTATION

GENERAL PLAN, ELEVATION & CROSS SECTION
SN 086-0042 / 086-0043

SCALE: SHEET OF SHEETS STA. TO STA.

F.A.I. RTE.	SECTION	COUNTY	TOTAL SHEETS	SHEET NO.
72	(86-8) BDR, BJR, BRR	SCOTT	9	7
CONTRACT NO. 72L09				
ILLINOIS FED. AID PROJECT				



- PARTIAL DEPTH PATCHING
- FULL DEPTH PATCHING

GENERAL NOTES:

THE PATCH SIZES AND LOCATIONS SHOWN ON THE PLAN SHEET ARE ESTIMATED. THE FINAL PATCH LOCATIONS SHALL BE DETERMINED BY THE ENGINEER IN THE FIELD.

WHILE PATCHING ADJACENT TO STEEL JOINT NOSINGS, THE CONTRACTOR SHALL TAKE CARE NOT TO DAMAGE THE EXISTING STUDS ATTACHED TO THE STEEL PLATES. ANY STUDS THAT ARE DAMAGED SHALL BE REPLACED WITH NEW 8" STUDS CONFORMING TO ARTICLE 1006.32, OR ALTERNATE ANCHORING DEVICE APPROVED BY THE ENGINEER. NO ADDITIONAL COMPENSATION WILL BE ALLOWED FOR REPAIRING ANCHORING STUDS DAMAGED BY THE CONTRACTOR'S ACTIVITIES.

MODEL Default
FILE NAME: C:\OPERATIONS\Bridges\Bridges\Bridges\CAD\72L09 - 172_patching - Scott\0672XXX\72-BRIDGE_DECK_PATCHING.dgn

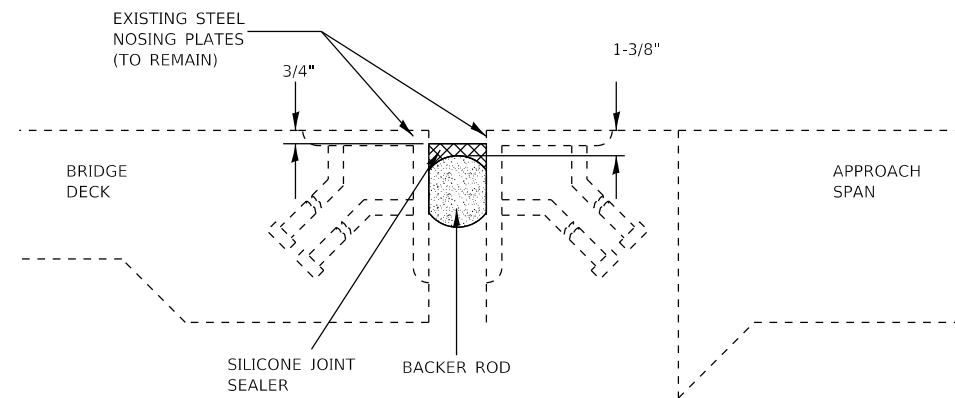
USER NAME = dudleybm	DESIGNED -	REVISED -
	DRAWN -	REVISED -
PLOT SCALE = 40.0000 ' / in.	CHECKED -	REVISED -
PLOT DATE = 2/1/2019	DATE -	REVISED -

**STATE OF ILLINOIS
DEPARTMENT OF TRANSPORTATION**

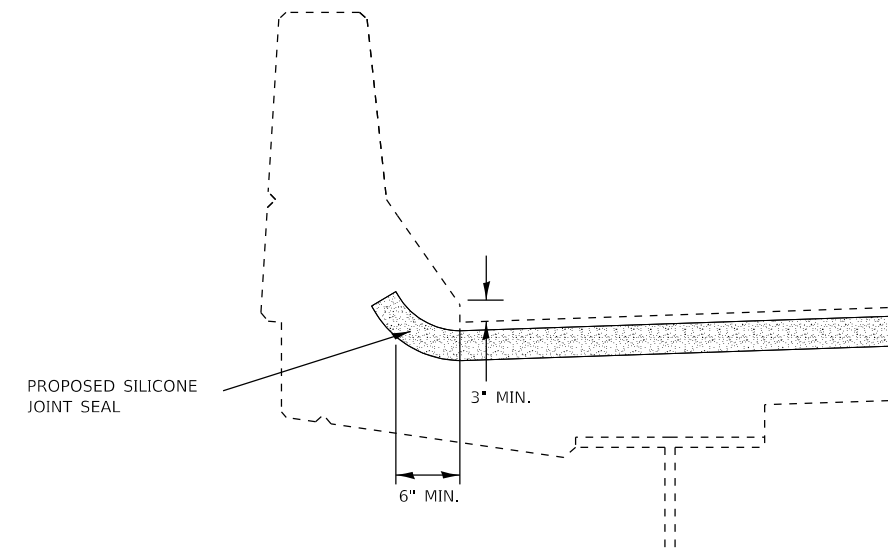
**PATCHING PLAN
SN 086-0042 / 086-0043**

SCALE: SHEET OF SHEETS STA. TO STA.

F.A.I. RTE.	SECTION	COUNTY	TOTAL SHEETS	SHEET NO.
72	(86-8) BDR, BJR, BRR	SCOTT	9	8
CONTRACT NO. 72L09				
ILLINOIS FED. AID PROJECT				



TYPICAL JOINT CROSS SECTION:
SILICONE JOINT SEALER (2 3/4")



TYPICAL PARAPET CROSS SECTION:
SILICONE JOINT SEALER END TREATMENT

NOTES:

JOINT WIDTHS SPECIFIED IN PLANS ARE AT 50° F. THE CONTRACTOR SHALL INSTALL BACKER ROD HAVING A DIAMETER 25% GREATER THAN THE JOINT OPENING AT THE TIME OF INSTALLATION.

THE COST OF REMOVING AND DISPOSING OF EXISTING JOINT SEAL MATERIAL SHALL BE INCLUDED IN THE BID PRICE FOR SILICONE JOINT SEALER.

MODEL: Default
FILE NAME: C:\OPERATIONS\bridge\bridgeplans\CAD\72L09 - 172_patchlog - Scott\0672XXX\72-BRIDGE DECK PATCHING.dwg

USER NAME = dudleybm	DESIGNED -	REVISED -
	DRAWN -	REVISED -
PLOT SCALE = 40.0000 ' / in.	CHECKED -	REVISED -
PLOT DATE = 2/1/2019	DATE -	REVISED -

STATE OF ILLINOIS
DEPARTMENT OF TRANSPORTATION

JOINT REPAIR DETAILS
SN 086-0042 / 086-0043

SCALE: SHEET OF SHEETS STA. TO STA.

F.A.I. RTE.	SECTION	COUNTY	TOTAL SHEETS	SHEET NO.
72	(86-8) BDR, BJR, BRR	SCOTT	9	9
			CONTRACT NO. 72L09	
		ILLINOIS	FED. AID PROJECT	