

STATE OF ILLINOIS
DEPARTMENT OF TRANSPORTATION

F.A.P. ROUTE	SECTION	COUNTY	TOTAL SHEETS	SHEET NO.
332	19CLV	CRAWFORD	16	1
ILLINOIS			CONTRACT NO. 74886	

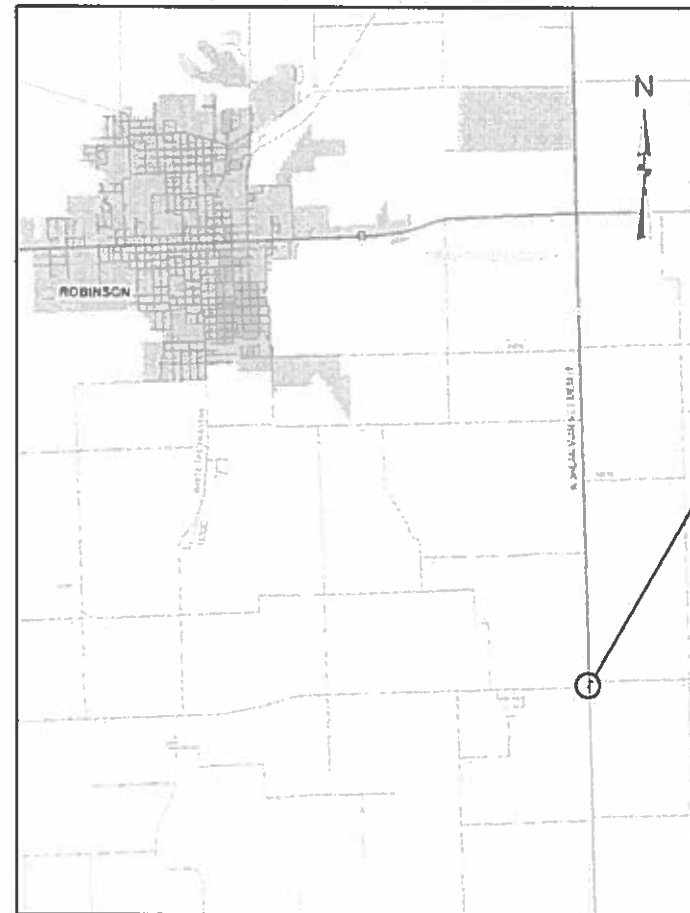
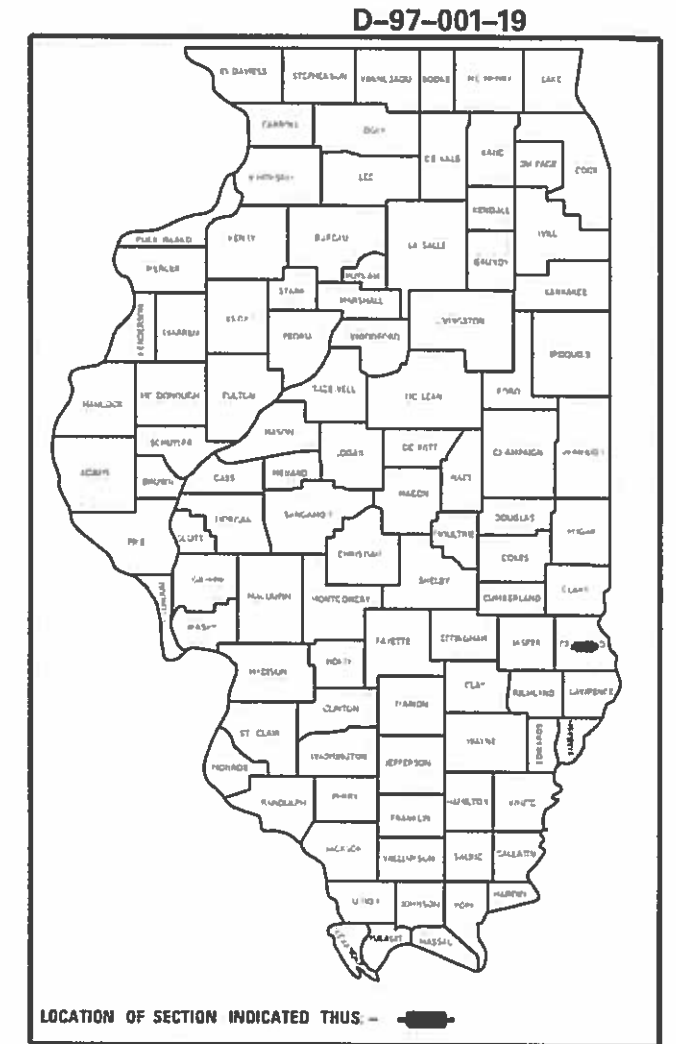
FOR INDEX OF SHEETS, SEE SHEET NO. 2

2018 ADT=4100

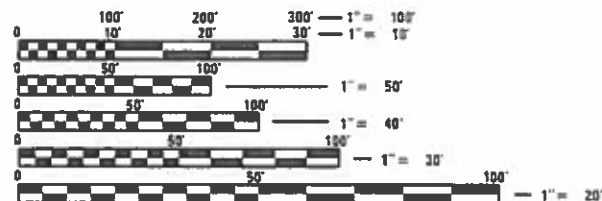
PROPOSED HIGHWAY PLANS

F.A.P. ROUTE 332 (ILL 1)
SECTION 19CLV
BOX CULVERT EXTENSIONS
CRAWFORD COUNTY

C-97-010-19



PROJECT LOCATION:
STA. 818+58.74 IL RTE 1
(E. 700th AVE., DUNCANVILLE RD.)



FULL SIZE PLANS HAVE BEEN PREPARED USING STANDARD ENGINEERING SCALES. REDUCED SIZED PLANS WILL NOT CONFORM TO STANDARD SCALES. IN MAKING MEASUREMENTS ON REDUCED PLANS, THE ABOVE SCALES MAY BE USED.

J.U.L.I.E.
JOINT UTILITY LOCATION INFORMATION FOR EXCAVATORS
1-800-892-0123
OR 811

PROJECT ENGINEER TOM RONAN
PROJECT MANAGER JEFF DAVISON

CONTRACT NO. 74886

STATE OF ILLINOIS
DEPARTMENT OF TRANSPORTATION

SUBMITTED February 13, 2019

Jeffrey M. Southick
REGIONAL ENGINEER

March 22, 2019
E.A. ETK
ENGINEER OF DESIGN AND ENVIRONMENT

Paul P. [Signature]
DIRECTOR OF HIGHWAYS PROJECT IMPLEMENTATION

PRINTED BY THE AUTHORITY
OF THE STATE OF ILLINOIS

SUMMARY OF QUANTITIES			TOTAL QUANTITIES	CONSTRUCTION TYPE CODE		
CODE NO	ITEM	UNIT		100% STATE 0004		
20201200	REMOVAL AND DISPOSAL OF UNSUITABLE MATERIAL	CU YD	315	315		
20400800	FURNISHED EXCAVATION	CU YD	324	324		
21400100	GRADING AND SHAPING DITCHES	FOOT	93	93		
28000400	PERIMETER EROSION BARRIER	FOOT	337	337		
28100107	STONE RIPRAP, CLASS A4	SO YD	128	128		
28200200	FILTER FABRIC	SO YD	173	173		
28300400	AGGREGATE DITCH	TON	3	3		
48102100	AGGREGATE WEDGE SHOULDER, TYPE B	TON	12	12		
50102400	CONCRETE REMOVAL	CU YD	9	9		
50200100	STRUCTURE EXCAVATION	CU YD	123	123		
50800205	REINFORCEMENT BARS, EPOXY COATED	POUND	8770	8770		
54002020	EXPANSION BOLTS 3/4 INCH	EACH	28	28		
54003000	CONCRETE BOX CULVERTS	CU YD	45.3	45.3		

SUMMARY OF QUANTITIES			TOTAL QUANTITIES	CONSTRUCTION TYPE CODE		
CODE NO	ITEM	UNIT		100% STATE 0004		
54213669	PRECAST REINFORCED CONCRETE FLARED END SECTIONS 24"	EACH	1	1		
542A1069	PIPE CULVERTS, CLASS A, TYPE 2 24"	FOOT	24	24		
67100100	MOBILIZATION	L SUM	1	1		
70100450	TRAFFIC CONTROL AND PROTECTION, STANDARD 701201	L SUM	1	1		
70103815	TRAFFIC CONTROL SURVEILLANCE	CAL DA	15	15		
70107025	CHANGEABLE MESSAGE SIGN	CAL DA	56	56		
X0426200	DEWATERING	L SUM	1	1		
X2501000	SEEDING, CLASS 2 (SPECIAL)	ACRE	0.2	0.2		
XX009289	TRAFFIC CONTROL AND PROTECTION, STANDARD BLR 21	L SUM	1	1		
* Z0054402	ROCK FILL - REPLACEMENT	CU YD	39	39		
	* SPECIALTY ITEM					

REV. - MS

MODEL: Default
 FILE NAME: I:\1108\FEB\DOT\EG\Illinois\gpr\PIVDOT\Documents\DOT_Offices\District_7\Projects\171886\CAD\Drawings\171886-111-500.dgn

USER NAME = steffemk	DESIGNED -	REVISED -
PLOT SCALE = 100.0000' / in.	DRAWN -	REVISED -
PLOT DATE = 1/28/2019	CHECKED -	REVISED -
	DATE -	REVISED -

STATE OF ILLINOIS
DEPARTMENT OF TRANSPORTATION

SUMMARY OF
QUANTITIES

SCALE: NA SHEET 1 OF 1 SHEETS STA. TO STA.

F.A.P. RTE. 332	SECTION 19CLV	COUNTY CRAWFORD	TOTAL SHEETS 16	SHEET NO. 3
CONTRACT NO. 74886			ILLINOIS FED. AID PROJECT	

EARTHWORK SCHEDULE

LOCATION	EARTH EXCAVATION CU YD	EARTH EXCAVATION ADJUSTED FOR SHRINKAGE CU YD	REMOVAL AND DISPOSAL OF UNSUITABLE MATERIAL CU YD	EMBANKMENT CU YD	EARTHWORK BALANCE WASTE (+) OR SHORTAGE (-) CU YD
NW QUADRANT DUNCANVILLE RD.	0	0	153	243	-243
SW QUADRANT DUNCANVILLE RD.	0	0	162	81	-81
PROJECT TOTALS	0	0	315	324	-324

MODEL: Default
FILE: \\nas1c.pva\ill08a\EBID\NTEC\Illinois.gov\PW\DOT\Documents\DOT_Offices\District 7\Projects\74886\CADD\data\CAD\papers\ID74886-11c-schedule.dgn

USER NAME = steffenmk	DESIGNED -	REVISED -
	DRAWN -	REVISED -
PLOT SCALE = 100.0000 ' / in.	CHECKED -	REVISED -
PLOT DATE = 1/28/2019	DATE -	REVISED -

**STATE OF ILLINOIS
DEPARTMENT OF TRANSPORTATION**

**SCHEDULE OF
QUANTITIES**

SCALE: NA SHEET 1 OF 1 SHEETS STA. TO STA.

F.A.P. RTE.	SECTION	COUNTY	TOTAL SHEETS	SHEET NO.
332	19CLV	CRAWFORD	16	4
CONTRACT NO. 74886			ILLINOIS FED. AID PROJECT	



PRECAST REINFORCED CONCRETE FLARED END SECTIONS 24"
 STA. 819+26.73
 INV. ELEV.=501.83

PIPE CULVERTS, CLASS A, TYPE 2 24"

CONCRETE BOX CULVERT, 10'X5.5'
 UPSTREAM ELEV.=499.83

CONSTRUCTION LIMITS

AGGREGATE WEDGE SHOULDER,
 TYPE B

GRADING AND SHAPING
 DITCHES

S.N. 017-8622
 10'X5.5' SINGLE BARREL BOX CULVERT
 STA. 818+91.28
 UPSTREAM INV. ELEV.=498.51

POT Sta 3+00.00

EXISTING R.O.W.

E. 700TH AVE.

DUCANVILLE RD.

REMOVE AND RE-ERECT EXISTING SIGN
 STA. +37.4, LT. 40.4'

EXISTING R.O.W.

POT Sta 818+58.74 C.L. OF IL 1 =
 POT Sta 16+00.00 C.L. DUNCANVILLE RD.

AGGREGATE DITCH

GRADING AND SHAPING
 DITCHES

CONCRETE BOX CULVERT, 3'X3'
 UPSTREAM ELEV.=500.81

EXISTING 3'X3' CONCRETE BOX CULVERT
 STA. 818+37.33
 UPSTREAM INV. ELEV.=500.45

PERIMETER EROSION BARRIER

 SEEDING, CLASS 2 (SPECIAL)



BM	STATION	OFFSET	ELEV	DESCRIPTION
413	821+00	62' LT	509.041	CHISELED "X" ON NORTH BOLT ON TOP OF FIRE HYDRANT LOCATED ON WEST SIDE OF IL 1 ACROSS FROM CR 700N
414	807+50	34' LT	511.898	CUT SQUARE ON TOP OF 2' X 2' BOX CULVERT LOCATED ON WEST SIDE OF IL 1 65' NORTH OF ENTRANCE TO RON'S SWING SHOP

USER NAME = steffemk	DESIGNED -	REVISED -
PLOT SCALE = 40.0000' / in.	DRAWN -	REVISED -
PLOT DATE = 1/28/2019	CHECKED -	REVISED -
	DATE -	REVISED -

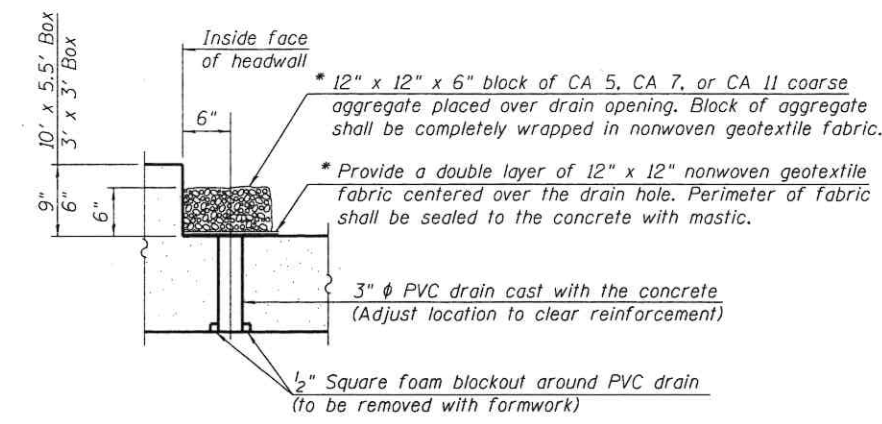
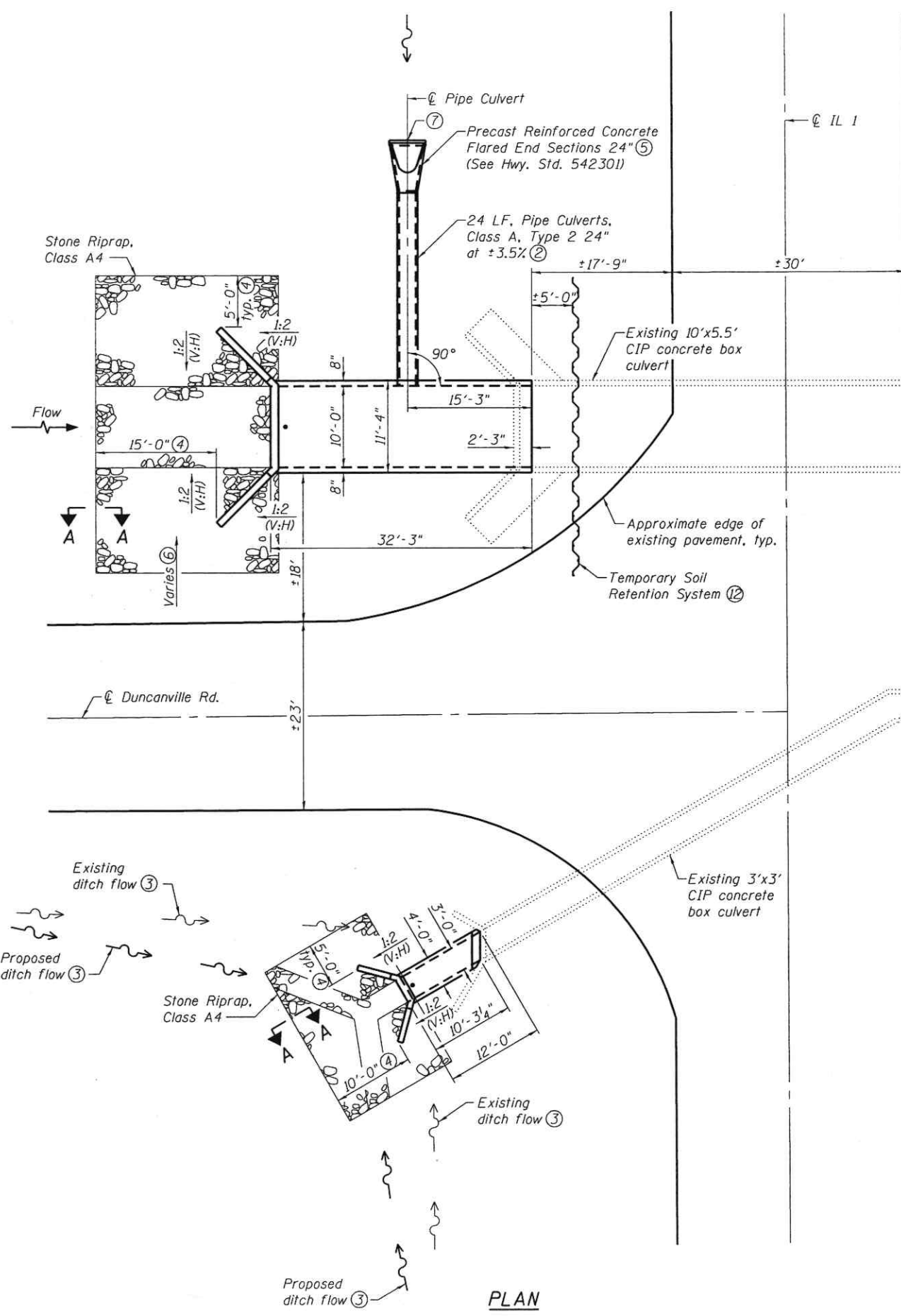
STATE OF ILLINOIS
 DEPARTMENT OF TRANSPORTATION

PLAN INTERSECTION
 E. 700th AVE. & IL RTE 1

SCALE: 20 SHEET 1 OF 1 SHEETS STA. 817+00.00 TO STA. 820+00.00

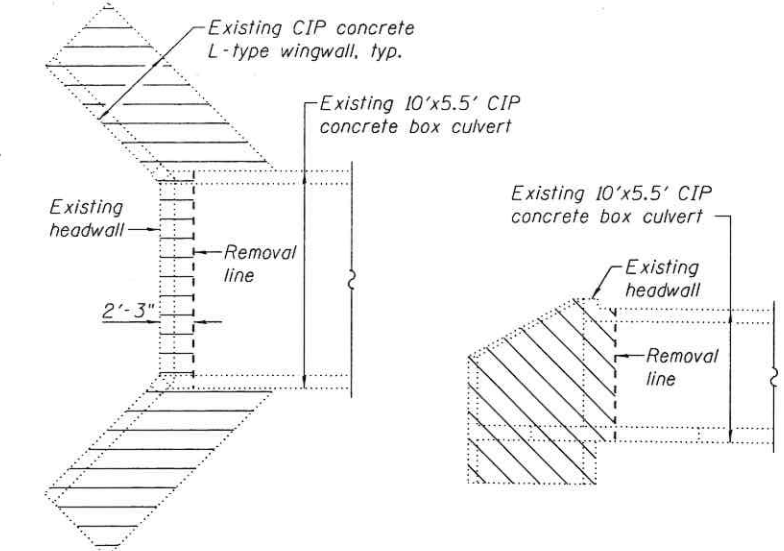
F.A.P. RTE.	SECTION	COUNTY	TOTAL SHEETS	SHEET NO.
332	19CLV	CRAWFORD	16	5
CONTRACT NO. 74886				
ILLINOIS FED. AID PROJECT				

MODEL: Default
 FILE: \\nas01\p01\B&B\EDITION\TEC\Illinois\p01\B&B\Documents\DOT Office\Drawings\74886\CADDData\CAD\Drawings\74886-Plan.dgn

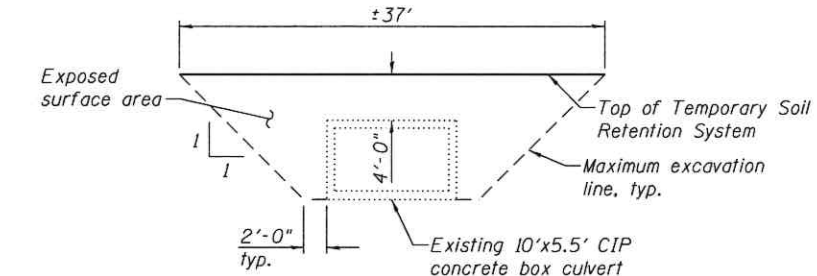


DRAIN DETAIL ⑪

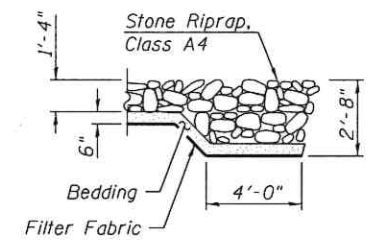
* Nonwoven geotextile fabric shall conform to the requirements of Article 1080.01 of the Standard Specifications. The minimum weight of the fabric shall be 6 ounces per square yard.



CONCRETE REMOVAL DETAILS - 10'x5.5' BOX ⑩



TEMPORARY SOIL RETENTION SYSTEM



SECTION A-A

TOTAL BILL OF MATERIAL

CODE NO.	ITEM	UNIT	TOTAL
28100107	Stone Riprap, Class A4	Sq. Yd.	128
28200200	Filter Fabric	Sq. Yd.	128
50102400	Concrete Removal	Cu. Yd.	9
50200100	Structure Excavation	Cu. Yd.	61
50800205	Reinforcement Bars, Epoxy Coated	Pound	8,770
52200020	Temporary Soil Retention System	Sq. Ft.	208
54002020	Expansion Bolts 3/4 Inch	Each	28
54003000	Concrete Box Culverts	Cu. Yd.	45.3
54213669	Precast Reinforced Concrete Flared End Sections 24"	Each	1
542A1069	Pipe Culverts, Class A, Type 2 24"	Foot	24

DESIGN SPECIFICATIONS

2012 AASHTO LRFD Bridge Design Specifications 6th Edition

LOADING HL-93

DESIGN STRESSES

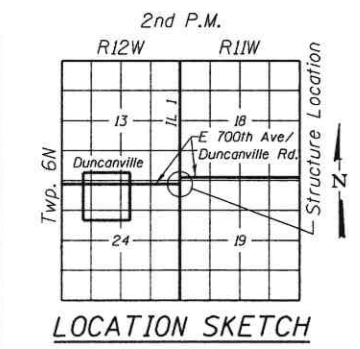
$f'_c = 3,500$ psi
 $f_y = 60,000$ psi (Reinforcement)

INDEX OF SHEETS

Sheet No.	Description
1	General Plan
2	10' x 5.5' Culvert Details
3	3' x 3' Culvert Details

- Notes:
- For utility locations, see Roadway plans.
 - Length and slope of pipe culvert may be adjusted to suit ground conditions as directed by the Engineer.
 - Reshape existing ditches to flow towards entrance of culvert extension.
 - Layout of riprap may be varied to suit ground conditions in the field as directed by the Engineer.
 - Protect pipe inlet according to Article 280.04(c) of the Standard Specifications. Cost shall be included with Precast Reinforced Concrete Flared End Sections 24".
 - Slope shall be 1:2 (V:H) behind and in front of wingwalls, typical. Slope beyond wingwalls may vary as required to match into existing.
 - Pipe culvert end section invert shall match existing ditch elevation. Contractor to verify slope prior to construction of pipe culverts.
 - A topographic survey was not completed. Locations of topographic features shown and excavation quantities shall be considered approximate.
 - Location of right of way shall be determined by the District.
 - Quantity based on removal of entire wall and footing. Existing concrete shall be removed to provide clearance for construction of the box culverts as directed by the Engineer.
 - All costs associated with furnishing and constructing the above drain detail will not be measured for payment but shall be included in the contract unit price for Concrete Box Culverts.
 - A cantilever sheet piling design does not appear feasible and additional members or other retention systems may be necessary. The Contractor shall submit a temporary soil retention system design including plan details and calculations for review and acceptance by the Engineer.

Professional Engineer Seal for Jason Dreyer, State of Illinois, License No. 081 007307. Signature of Jason Dreyer. Date: 1/11/2019. Expiration: 11/30/2020.



FILE NAME: H:\P\11841\11841.018 - Duncanville Culvert Revisions\Microstation\11841.018-001-General Plan.dgn

OATES ASSOCIATES
 ILLINOIS DESIGN FIRM LICENSE NO.: 184.001115

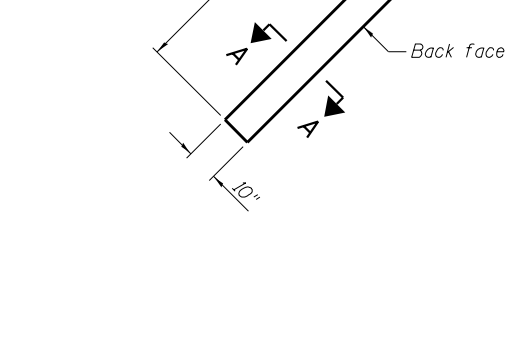
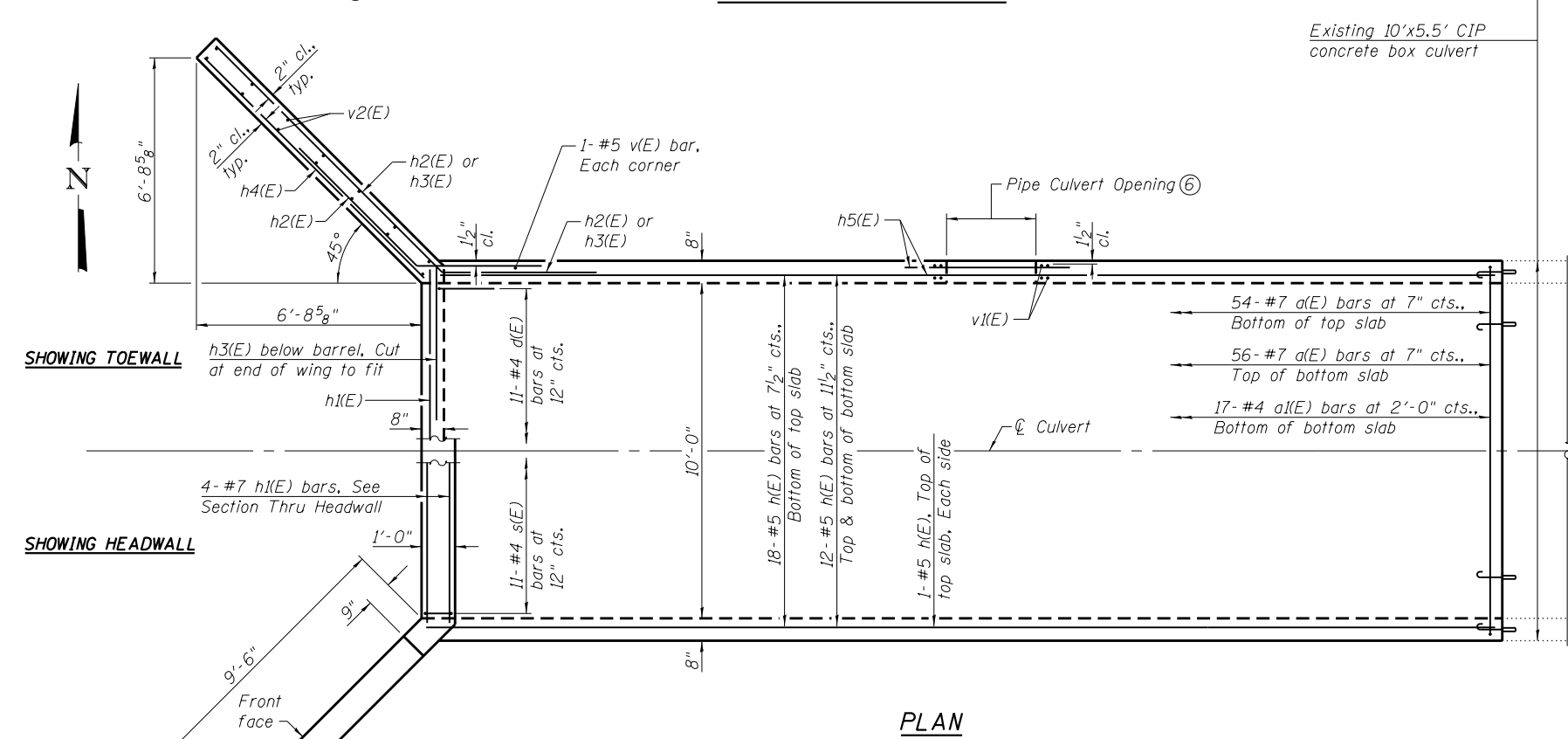
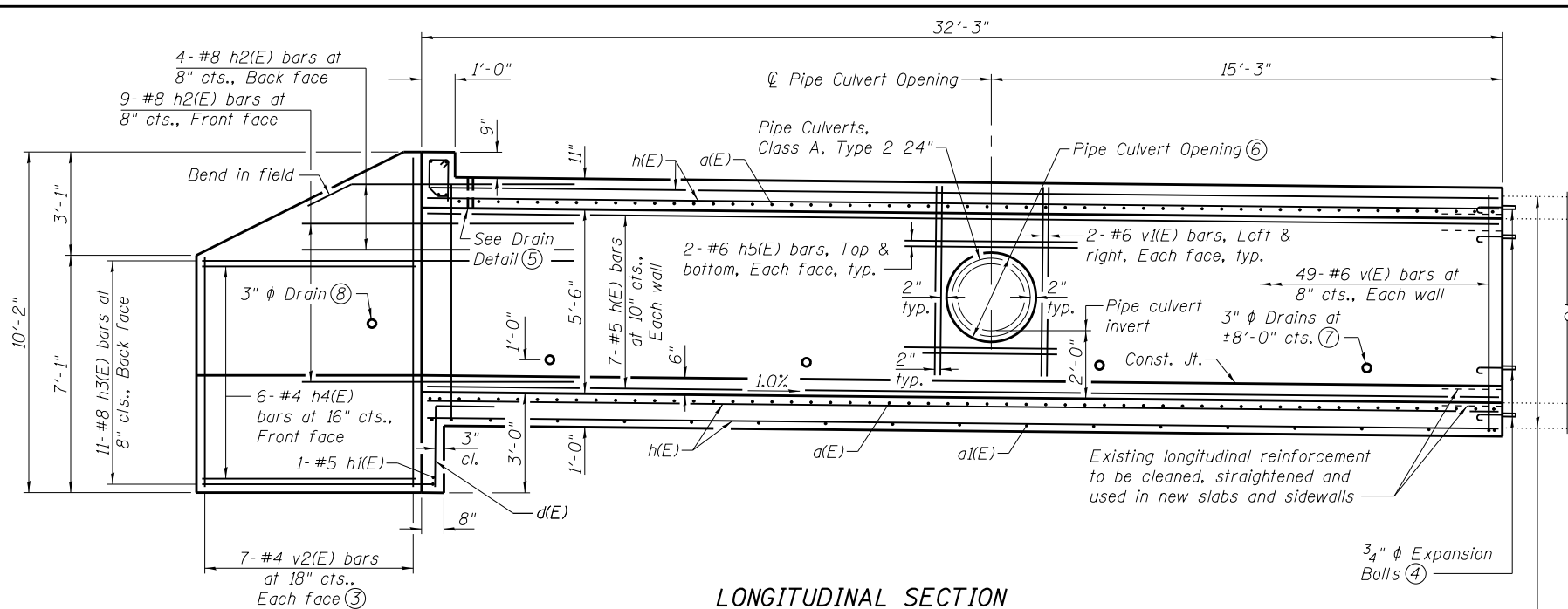
USER NAME	DESIGNED	REVISIONS
KBC	KBC	
JAD	JAD	
KBC	KBC	
JAD	JAD	

STATE OF ILLINOIS DEPARTMENT OF TRANSPORTATION

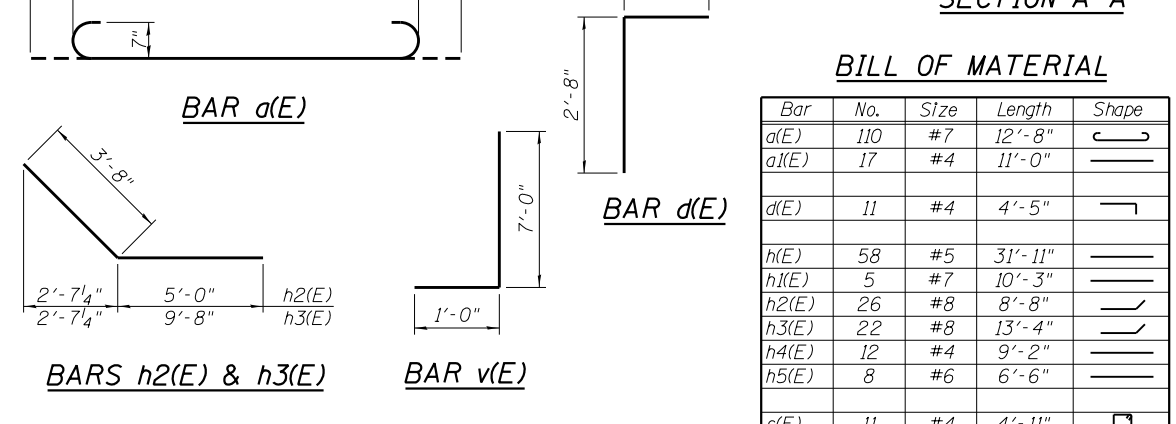
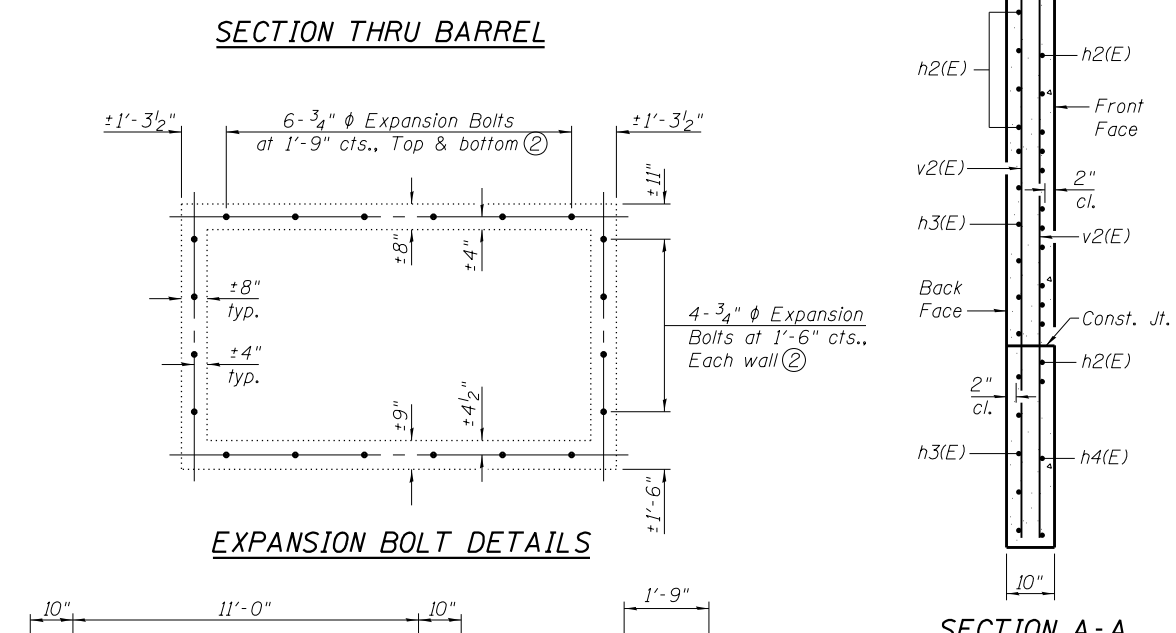
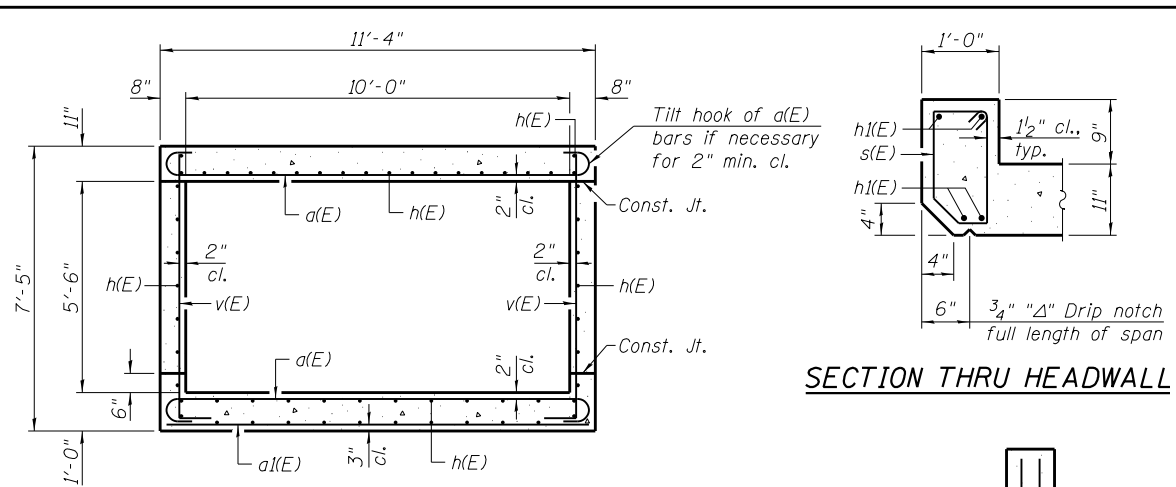
GENERAL PLAN DUNCANVILLE ROAD CULVERT REPAIR
 SHEET NO. 1 OF 3 SHEETS

F.A.P. RTE.	SECTION	COUNTY	TOTAL SHEETS	SHEET NO.
332	19CLV	CRAWFORD	16	6

CONTRACT NO. 74886
 ILLINOIS FED. AID PROJECT

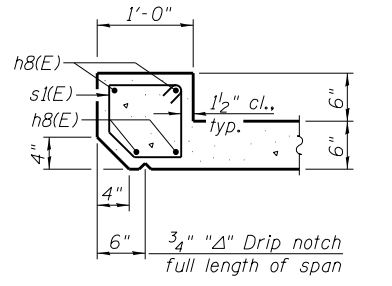
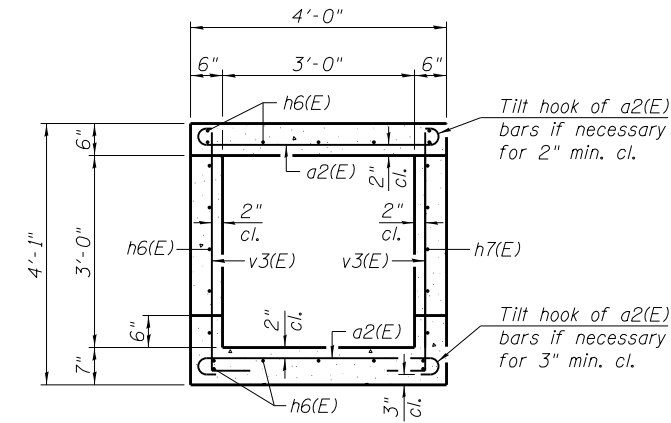
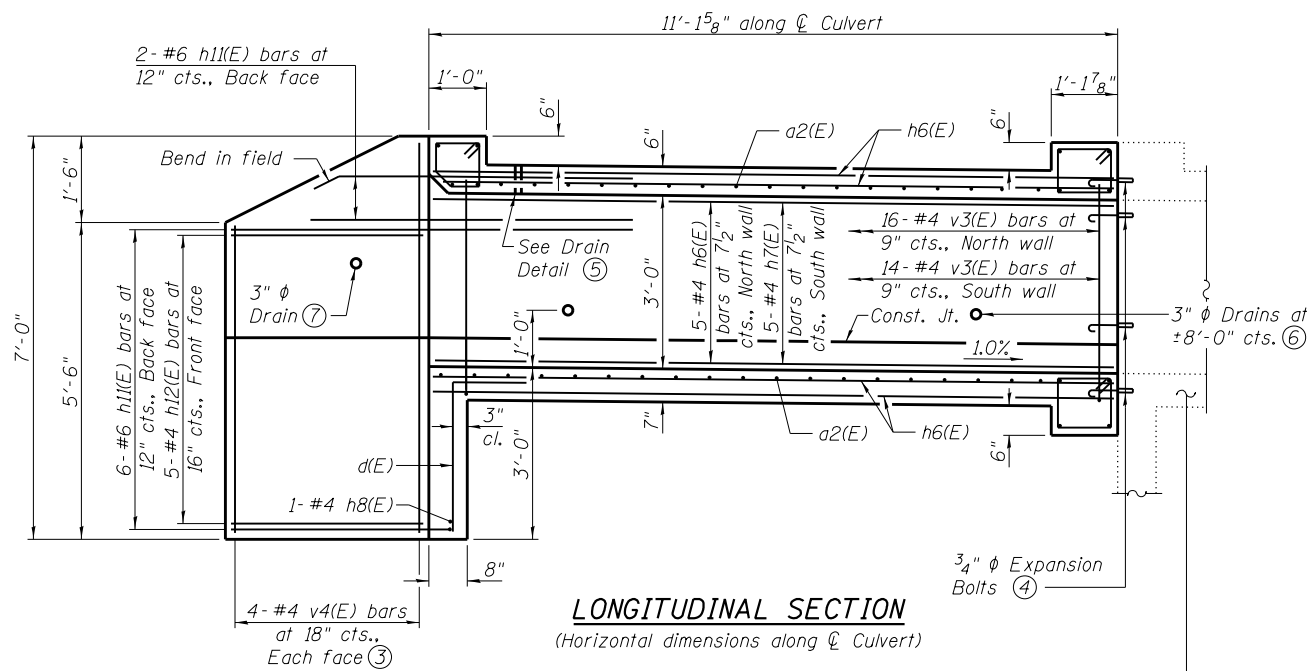


- Notes**
- A distance of half the length of the wingwall but not less than six feet of the barrel shall be poured monolithically with the wingwalls.
 - Expansion bolts shall be 3/4" ϕ hooked bolts. Hooked bolts shall extend a minimum of 9" into new concrete.
 - See Field Cutting Diagram.
 - See Expansion Bolt Details.
 - For Drain Detail, see sheet 1 of 3.
 - Pipe Culvert Opening shall be located as shown in the northern sidewall of the box culvert only, see Plan on sheet 1 of 3. Diameter of opening shall be outside diameter of pipe culvert + 4". The gap between the pipe culvert and the opening shall be filled with nonshrink grout for the entire length of the opening before backfilling proceeds above bottom of opening. The nonshrink grout shall conform to Section 1024 of the Standard Specifications. The cost of the nonshrink grout shall be included with Concrete Box Culverts.
 - Drains holes shall be provided on exterior culvert walls. The drain hole shall conform to the requirements of Article 503.11 of the Standard Specifications.
 - Drain hole to be located $\pm 1'-0"$ above finished ground at the front face of the wingwall.



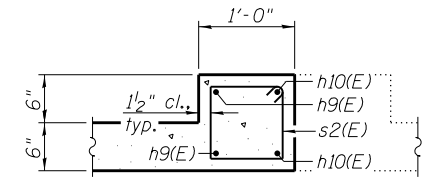
BILL OF MATERIAL

Bar	No.	Size	Length	Shape
a(E)	110	#7	12'-8"	U
a1(E)	17	#4	11'-0"	—
d(E)	11	#4	4'-5"	L
h(E)	58	#5	31'-11"	—
h1(E)	5	#7	10'-3"	—
h2(E)	26	#8	8'-8"	L
h3(E)	22	#8	13'-4"	L
h4(E)	12	#4	9'-2"	—
h5(E)	8	#6	6'-6"	—
s(E)	11	#4	4'-11"	D
v(E)	100	#6	8'-0"	L
v1(E)	8	#6	5'-7"	—
v2(E)	14	#4	16'-8"	—
Reinforcement Bars, Epoxy Coated			Pound	8,040
Expansion Bolts 3/4" Inch			Each	20
Concrete Box Culverts			Cu. Yd.	40.4

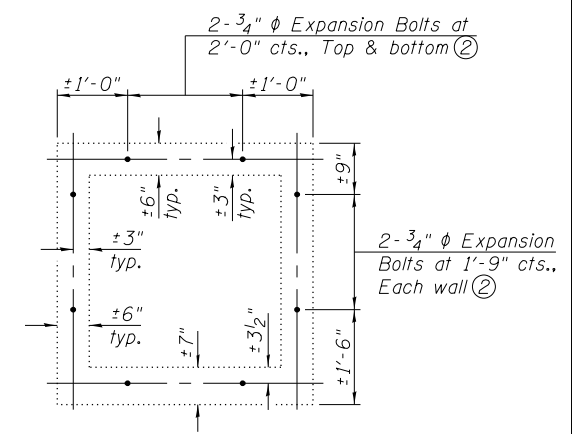


SECTION THRU BARREL
(Looking East)

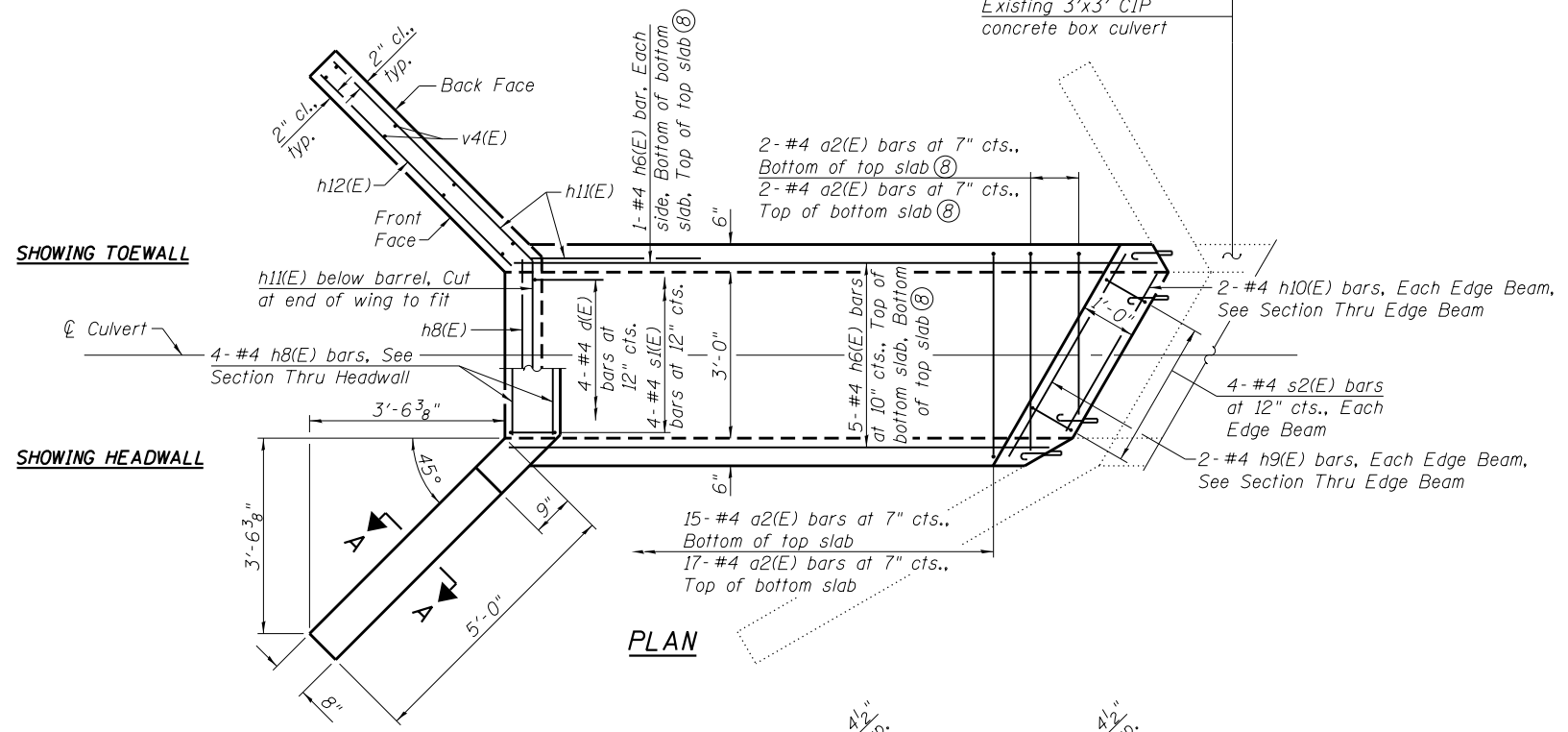
SECTION THRU HEADWALL



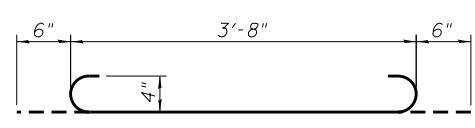
SECTION THRU EDGE BEAM
(Horizontal dimensions at right L's to Edge Beam, Top & bottom Edge Beam similar)



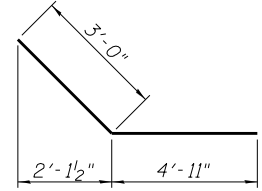
EXPANSION BOLT DETAILS



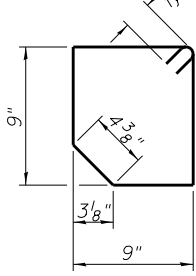
PLAN



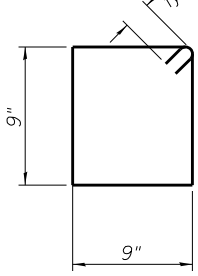
BAR a2(E)



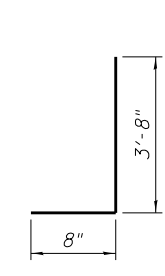
BAR h11(E)



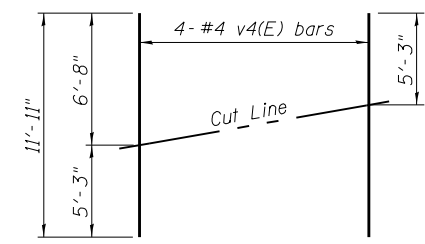
BAR s1(E)



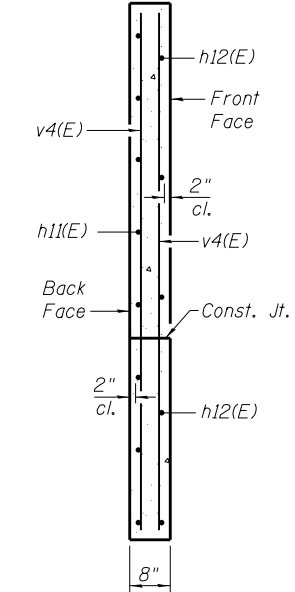
BAR s2(E)



BAR v3(E)



FIELD CUTTING DIAGRAM



SECTION A-A

BILL OF MATERIAL

Bar	No.	Size	Length	Shape	
a2(E)	36	#4	4'-8"	U	
d(E)	4	#4	4'-5"	L	
h6(E)	19	#4	11'-6"	—	
h7(E)	5	#4	9'-4"	—	
h8(E)	5	#4	2'-9"	—	
h9(E)	4	#4	4'-3"	—	
h10(E)	4	#4	3'-4"	—	
h11(E)	16	#6	7'-11"	—	
h12(E)	10	#4	4'-8"	—	
s1(E)	4	#4	3'-7"	U	
s2(E)	8	#4	3'-9"	U	
v3(E)	30	#4	4'-4"	U	
v4(E)	8	#4	11'-11"	—	
Reinforcement Bars, Epoxy Coated				Pound	730
Expansion Bolts 3/4 Inch				Each	8
Concrete Box Culverts				Cu. Yd.	4.9

Notes

- A distance of half the length of the wingwall but not less than six feet of the barrel shall be poured monolithically with the wingwalls.
- Expansion bolts shall be 3/4" φ hooked bolts. Hooked bolts shall extend a minimum of 9" into new concrete.
- See Field Cutting Diagram.
- See Expansion Bolt Details.
- For Drain Detail, see sheet 1 of 3.
- Drains holes shall be provided on exterior culvert walls. The drain hole shall conform to the requirements of Article 503.11 of the Standard Specifications.
- Drain hole to be located ±1'-0" above finished ground at the front face of the wingwall.
- Cut to fit skew.

FILE NAME = H:\P\1041\1041.010 - Duncanville Culvert Revisions\Misc\Station\1041.010-003-3 x 3 Structure Details.dgn



USER NAME =	DESIGNED - KBC	REVISED
PLOT SCALE =	CHECKED - JAD	REVISED
PLOT DATE = 12/31/2018	DRAWN - KBC	REVISED
	CHECKED - JAD	REVISED

**STATE OF ILLINOIS
DEPARTMENT OF TRANSPORTATION**

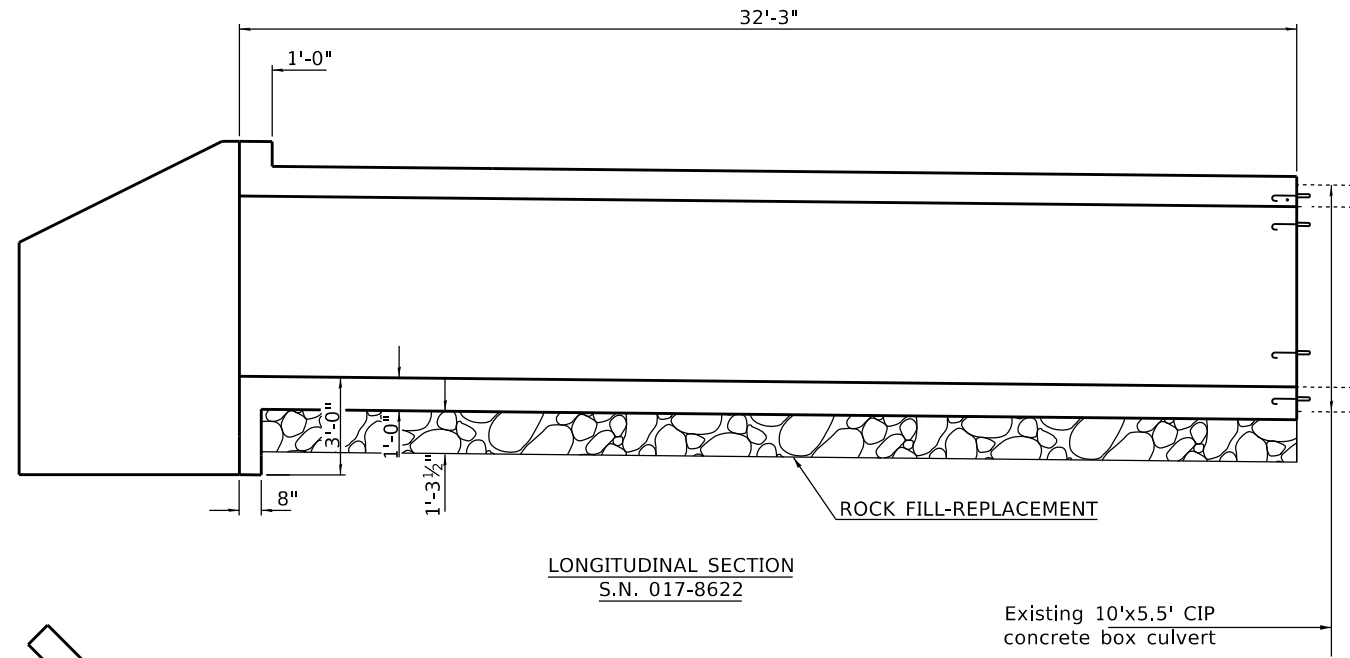
**3' x 3' CULVERT DETAILS
DUNCANVILLE ROAD CULVERT REPAIR**

SHEET NO. 3 OF 3 SHEETS

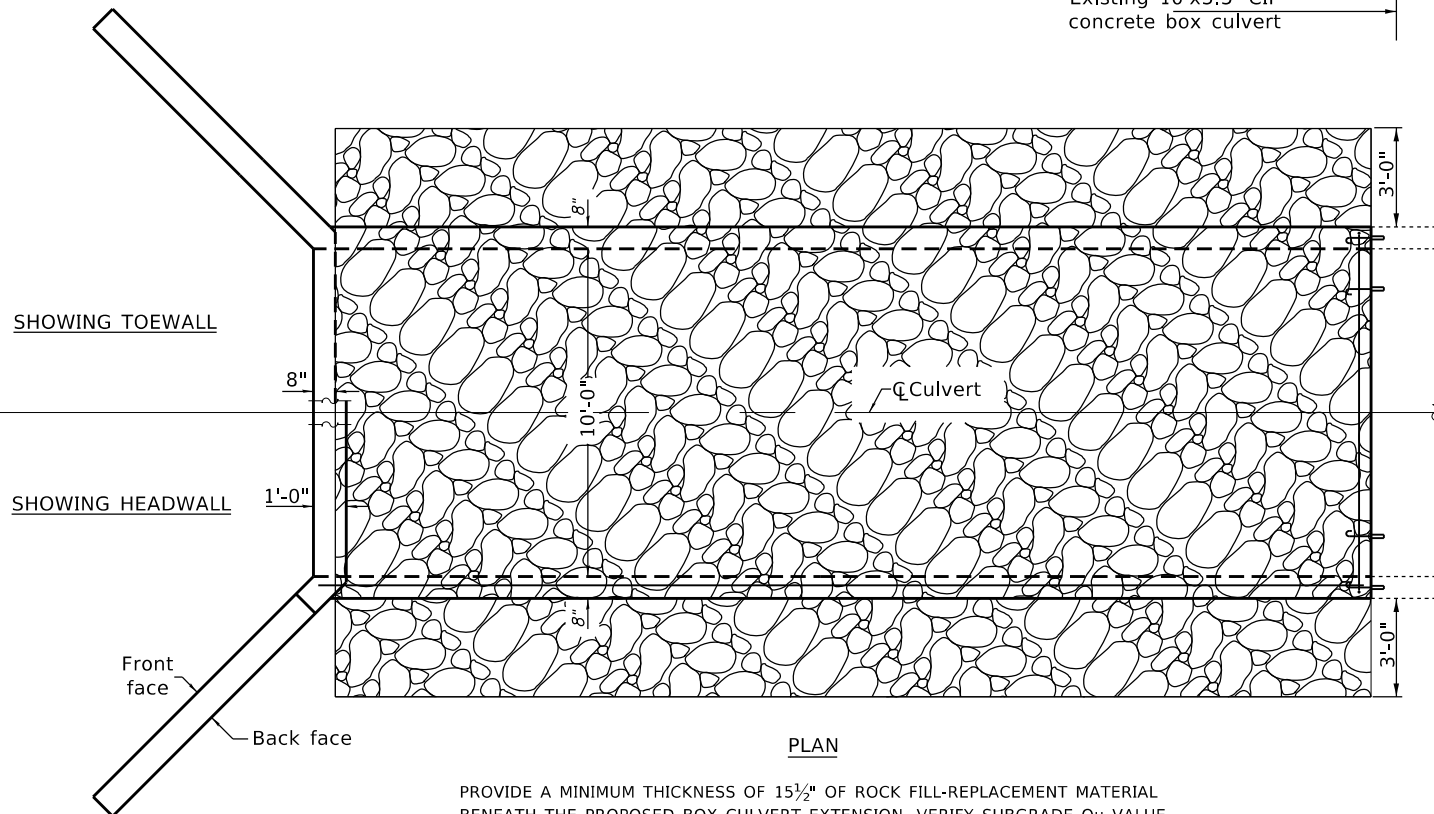
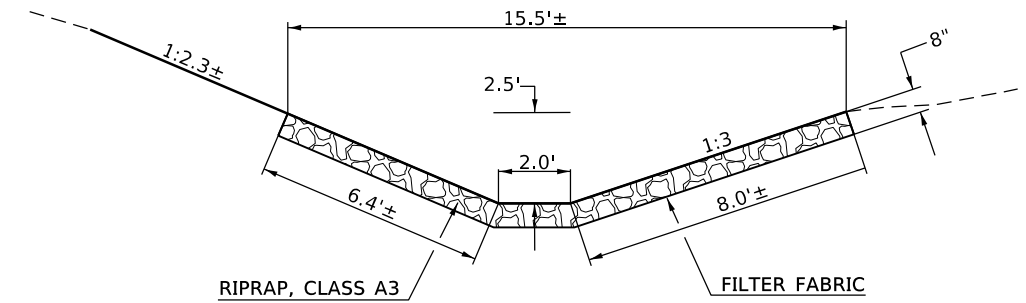
F.A.P. RTE.	SECTION	COUNTY	TOTAL SHEETS	SHEET NO.
332	19CLV	CRAWFORD	16	8
				CONTRACT NO. 74886

ILLINOIS FED. AID PROJECT

ROCK FILL-REPLACEMENT



AGGREGATE DITCH



PROVIDE A MINIMUM THICKNESS OF 15½" OF ROCK FILL-REPLACEMENT MATERIAL BENEATH THE PROPOSED BOX CULVERT EXTENSION. VERIFY SUBGRADE Q_u VALUE AT BOTTOM OF EXCAVATION PRIOR TO PLACEMENT OF ROCK FILL-REPLACEMENT.

THE LIMITS AND QUANTITIES OF REMOVAL AND REPLACEMENT ARE BASED UPON THE BORING DATA AND MAY BE MODIFIED BY THE DISTRICT GEOTECHNICAL ENGINEER AND THE FIELD ENGINEER FOR VARIABLE SUBSURFACE CONDITIONS ENCOUNTERED IN THE FIELD.

GRADATION AND CAPPING OF THE ROCK FILL MATERIAL USED TO REPLACE THE UNSUITABLE MATERIAL SHALL BE APPROVED BY THE DISTRICT GEOTECHNICAL ENGINEER.

STATE OF ILLINOIS
DEPARTMENT OF TRANSPORTATION

ROCK FILL-REPLACEMENT/
AGGREGATE DITCH DETAIL

SCALE: NA SHEET 1 OF SHEETS STA. TO STA.

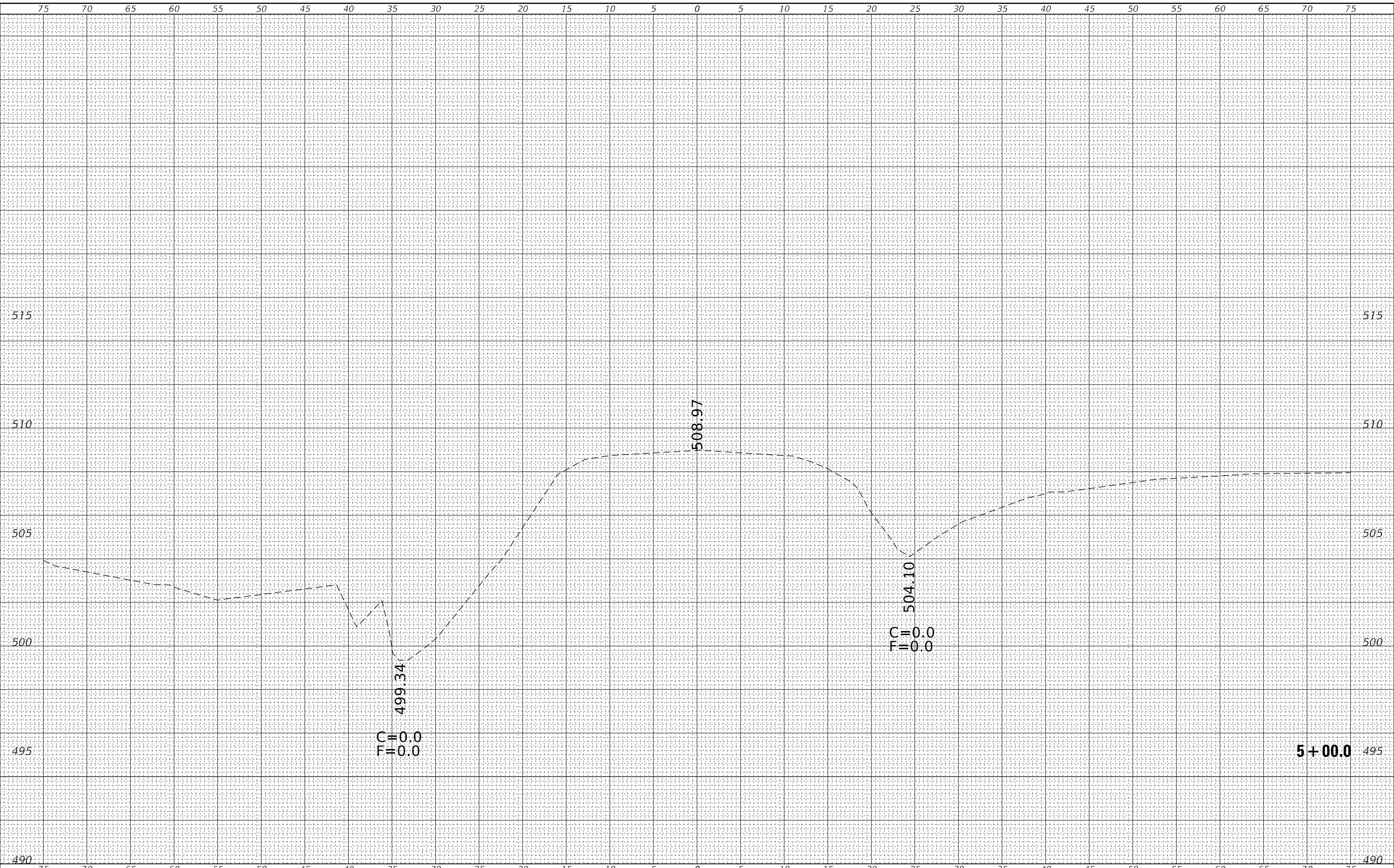
F.A.P. RTE.	SECTION	COUNTY	TOTAL SHEETS	SHEET NO.
332	19CLV	CRAWFORD	16	9
CONTRACT NO. 74886				
ILLINOIS FED. AID PROJECT				

MODEL: Default
 FILE NAME: p:\u0008\B&E\BIDD\ITEC\Illinois\pwr\pwr\DOT\Documents\BIDD\Office\BIDD\74886\CADD\pwr\CAD\pwr\74886-19-clv\9-9.dgn
 PROJECT: 74886\CADD\pwr\CAD\pwr\74886-19-clv\9-9.dgn

FINAL SURVEY NO.	SURVEYED PLOTTED AREAS CHECKED	BY	DATE
NOTE BOOK	TEMPLATE		
AREAS CHECKED			

ORIGINAL SURVEY NO.	SURVEYED PLOTTED AREAS CHECKED	BY	DATE
NOTE BOOK	TEMPLATE		
AREAS CHECKED			

MODEL: Defaulr
 FILE NAME: D:\ILLINOIS\EBID\NTC\Illinois\pwp\WDD\Documents\DOT\Office\District 7\Projects\74886\CAD\Drawings\DOT\74886-19-clv.dwg



5 + 00.0

USER NAME = stefenmk	DESIGNED -	REVISED -
PLOT SCALE = 10,0000' / in.	DRAWN -	REVISED -
PLOT DATE = 1/28/2019	CHECKED -	REVISED -
	DATE -	REVISED -

**STATE OF ILLINOIS
 DEPARTMENT OF TRANSPORTATION**

**E. 700th AVE. (DUNCANVILLE RD.)
 CROSS SECTIONS**

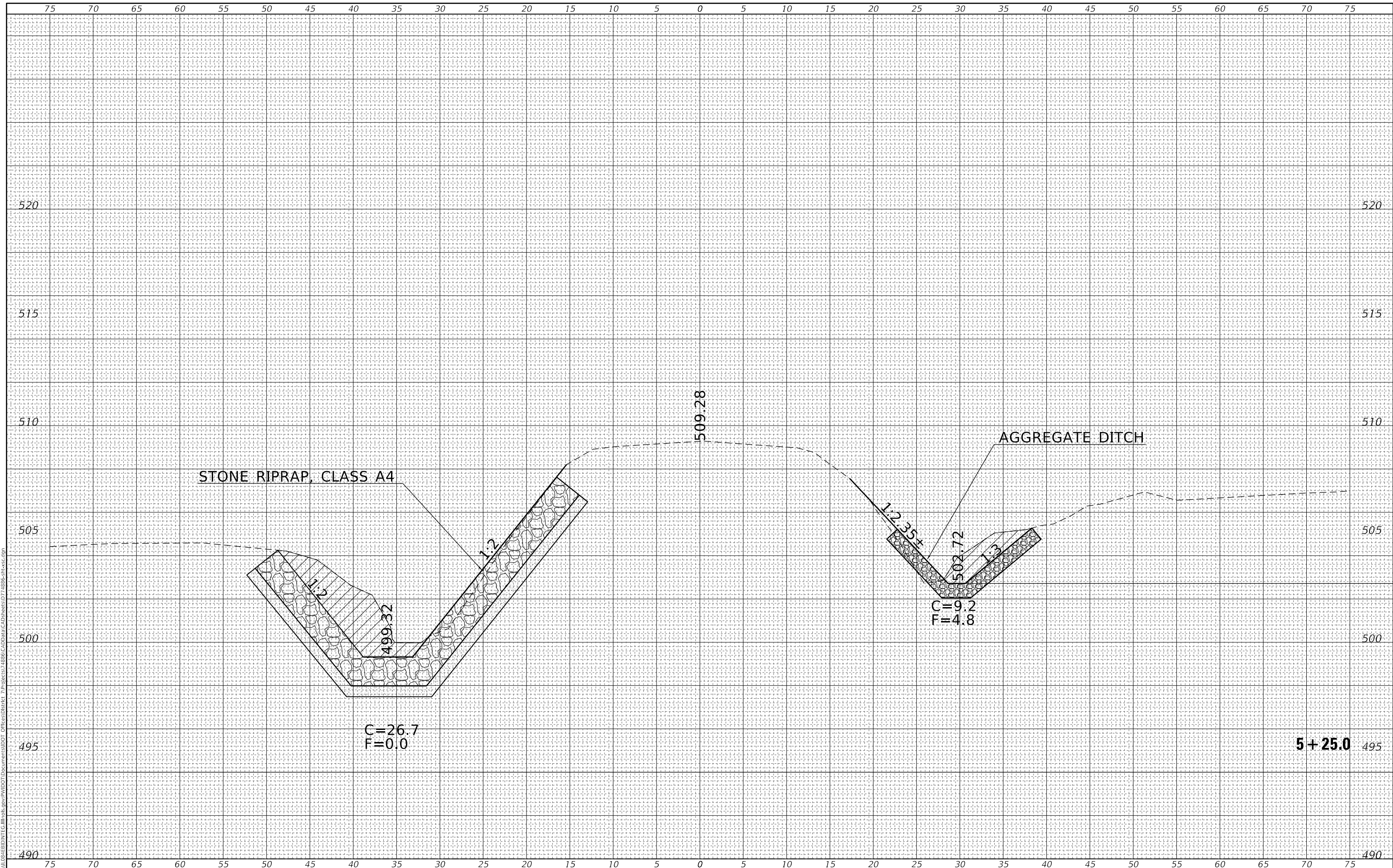
SCALE: 2.5V:5H SHEET 1 OF 4 SHEETS STA. 5+00.0 TO STA. 5+00.0

F.A.P. RTE.	SECTION	COUNTY	TOTAL SHEETS	SHEET NO.
332	19CLV	CRAWFORD	16	10
CONTRACT NO. 74886				
ILLINOIS		FED. AID PROJECT		

FINAL SURVEY NO.	SURVEYED	DATE
NOTE BOOK	PLOTTED	
AREAS CHECKED	TEMPLATE	
	AREAS CHECKED	

ORIGINAL SURVEY NO.	SURVEYED	DATE
NOTE BOOK	PLOTTED	
AREAS CHECKED	TEMPLATE	
	AREAS CHECKED	

MODEL: Defaul
 FILE NAME: D:\ILLINOIS\EBID\NTC\Illinois\pwp\p\DOT\Documents\DOT Offices\District 7\Projects\74886\CAD\Drawings\74886-19-clv.dwg



USER NAME = stefenmk	DESIGNED -	REVISED -
	DRAWN -	REVISED -
PLOT SCALE = 10.0000' / in.	CHECKED -	REVISED -
PLOT DATE = 1/28/2019	DATE -	REVISED -

**STATE OF ILLINOIS
 DEPARTMENT OF TRANSPORTATION**

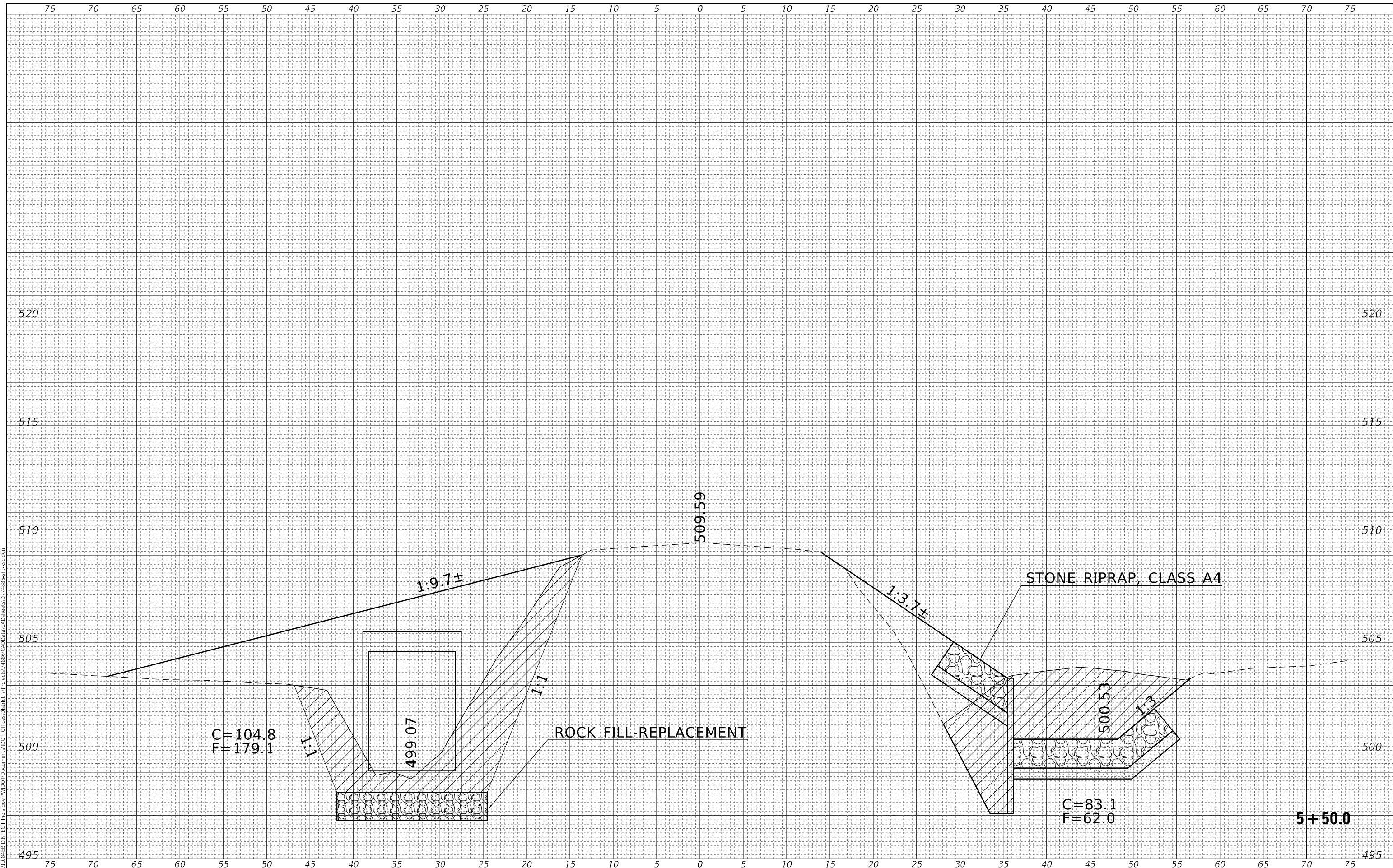
E. 700th AVE. (DUNCANVILLE RD.) CROSS SECTIONS			
SCALE: 2.5V:5H	SHEET 2	OF 4 SHEETS	STA. 5+25.0 TO STA. 5+25.0

F.A.P. RTE. 332	SECTION 19CLV	COUNTY CRAWFORD	TOTAL SHEETS 16	SHEET NO. 11
			CONTRACT NO. 74886	
		ILLINOIS	FED. AID PROJECT	

FINAL SURVEY NO.	SURVEYED	DATE
NOTE BOOK	PLOTTED	
AREAS CHECKED	TEMPLATE	
	AREAS CHECKED	

ORIGINAL SURVEY NO.	SURVEYED	DATE
NOTE BOOK	PLOTTED	
AREAS CHECKED	TEMPLATE	
	AREAS CHECKED	

MODEL: Defnair
 FILE NAME: D:\ILLINOIS\EBID\NTC\Illinois\pwp\WDD\Documents\1001\Documents\1001\Projects\1886\CAD\Drawings\174886-19-clv.dwg



USER NAME = stefnmk
PLOT SCALE = 10.0000' / in.
PLOT DATE = 1/28/2019

DESIGNED -
DRAWN -
CHECKED -
DATE -

REVISED -
REVISED -
REVISED -
REVISED -

**STATE OF ILLINOIS
 DEPARTMENT OF TRANSPORTATION**

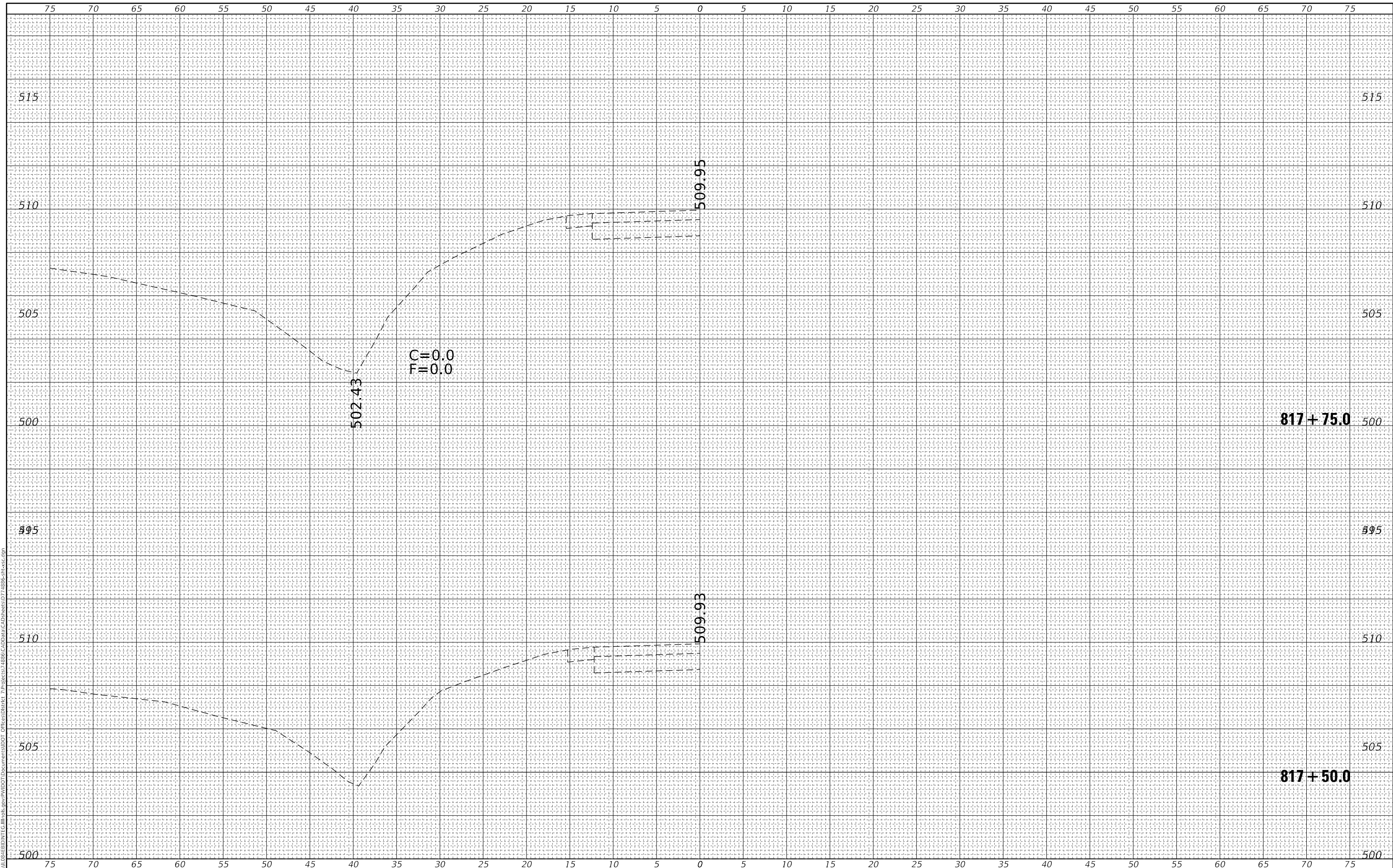
**E. 700th AVE (DUNCANVILLE RD.)
 CROSS SECTIONS**
 SCALE: 2.5V:5H SHEET 3 OF 4 SHEETS STA. 5+50.0 TO STA. 5+50.0

F.A.P. RTE. 332	SECTION 19CLV	COUNTY CRAWFORD	TOTAL SHEETS 16	SHEET NO. 12
			CONTRACT NO. 74886	
ILLINOIS		FED. AID PROJECT		

FINAL SURVEY NO.	SURVEYED	BY	DATE
NOTE BOOK	PLOTTED		
AREAS CHECKED	TEMPLATE		
	AREAS CHECKED		

ORIGINAL SURVEY NO.	SURVEYED	BY	DATE
NOTE BOOK	PLOTTED		
AREAS CHECKED	TEMPLATE		
	AREAS CHECKED		

MODEL: Defnair
 FILE NAME: D:\110108\EBID\NTC\Illinois\pwp\p\DOT\Documents\DOT Offices\District 7\Projects\1886\CAD\Drawings\171886-PC-sec.dgn



USER NAME = stefenmk	DESIGNED -	REVISED -
	DRAWN -	REVISED -
PLOT SCALE = 10,0000' / in.	CHECKED -	REVISED -
PLOT DATE = 1/28/2019	DATE -	REVISED -

**STATE OF ILLINOIS
 DEPARTMENT OF TRANSPORTATION**

**IL RTE 1
 CROSS SECTIONS**

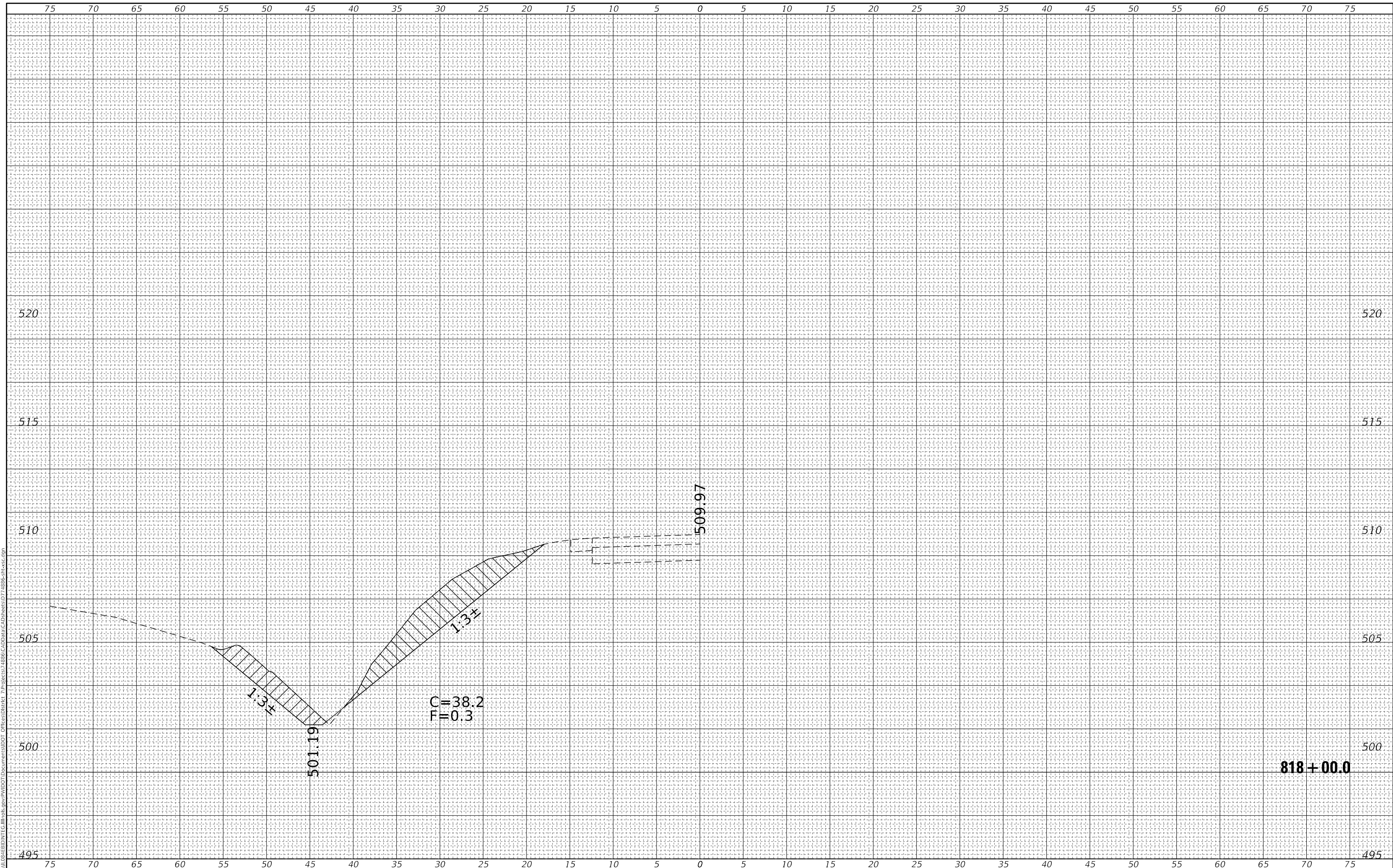
SCALE: 2.5V:5H SHEET 1 OF 2 SHEETS STA. 817+50.0 TO STA. 817+75.0

F.A.P. RTE. 332	SECTION 19CLV	COUNTY CRAWFORD	TOTAL SHEETS 16	SHEET NO. 14
			CONTRACT NO. 74886	
ILLINOIS		FED. AID PROJECT		

FINAL SURVEY NO.	SURVEYED	BY	DATE
NOTE BOOK	PLOTTED		
AREAS CHECKED	TEMPLATE		
	AREAS CHECKED		

ORIGINAL SURVEY NO.	SURVEYED	BY	DATE
NOTE BOOK	PLOTTED		
AREAS CHECKED	TEMPLATE		
	AREAS CHECKED		

MODEL: Defnair
 FILE NAME: D:\ILLINOIS\EBID\NTC\Illinois\pwp\WDD\Documents\DOT Offices\District 7\Projects\74886\CAD\Drawings\07-74886-19-clv.dwg



C = 38.2
 F = 0.3

USER NAME = stefenmk	DESIGNED -	REVISED -
	DRAWN -	REVISED -
PLOT SCALE = 10.0000 ' / in.	CHECKED -	REVISED -
PLOT DATE = 1/28/2019	DATE -	REVISED -

**STATE OF ILLINOIS
 DEPARTMENT OF TRANSPORTATION**

SCALE: 2.5V:5H	SHEET 2	OF 2 SHEETS	STA. 818+00.0	TO STA. 818+00.0
----------------	---------	-------------	---------------	------------------

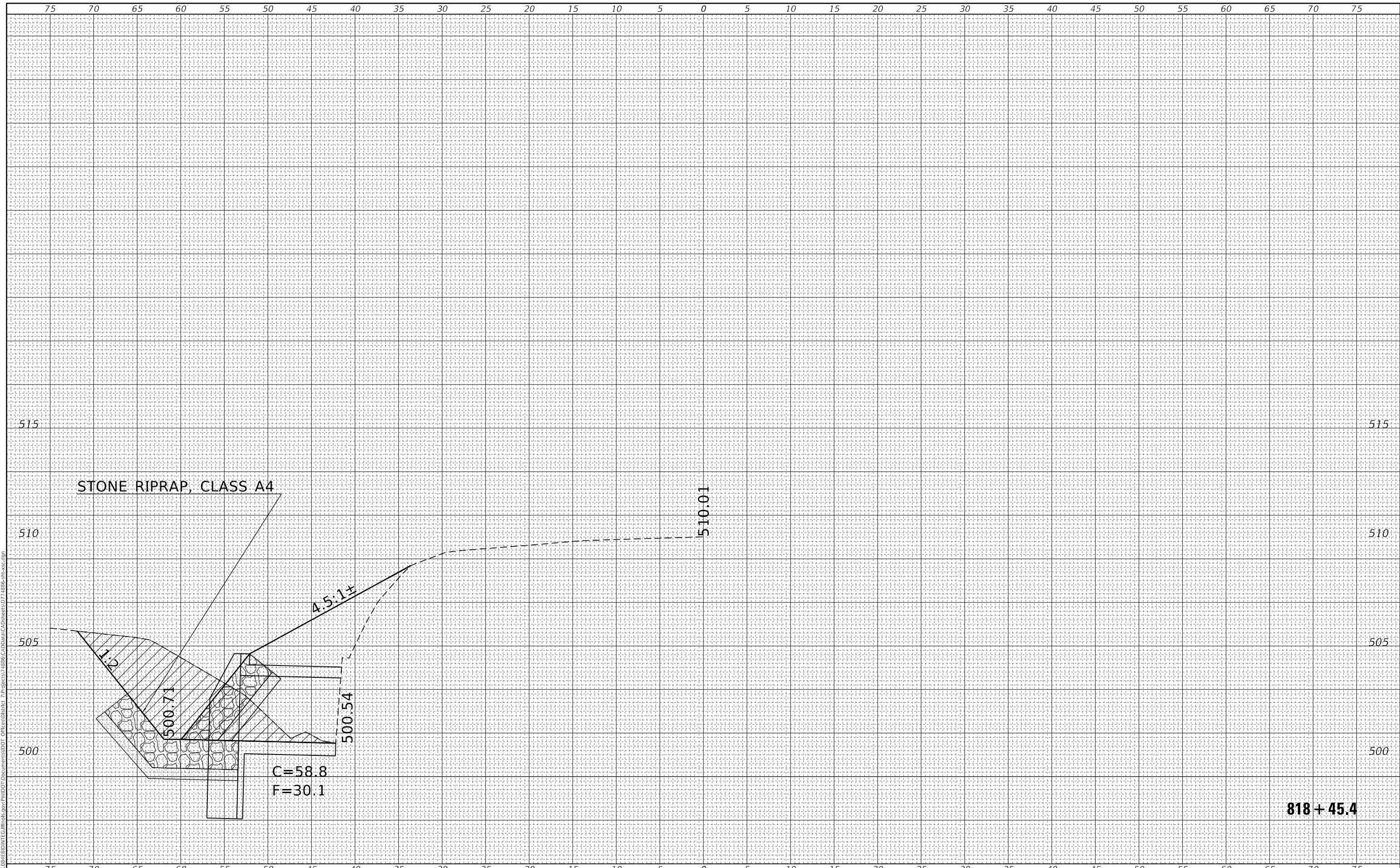
**IL RTE 1
 CROSS SECTIONS**

F.A.P. RTE. 332	SECTION 19CLV	COUNTY CRAWFORD	TOTAL SHEETS 16	SHEET NO. 15
			CONTRACT NO. 74886	
		ILLINOIS	FED. AID PROJECT	

FINAL SURVEY NO.	SURVEYED	BY	DATE
NOTE BOOK	PLOTTED		
AREAS CHECKED	TEMPLATE		
	AREAS CHECKED		

ORIGINAL SURVEY NO.	SURVEYED	BY	DATE
	PLOTTED		
	TEMPLATE		
	AREAS CHECKED		

MODEL: Defaul
FILE NAME: D:\ILLINOIS\EBID\NTC\Illinois\pwp\WIDOT\Documents\1001\01\Projects\1886\CAD\Drawings\174886-19-clv.dwg



USER NAME = stefenmk	DESIGNED -	REVISED -
	DRAWN -	REVISED -
PLOT SCALE = 10.0000 ' / in.	CHECKED -	REVISED -
PLOT DATE = 1/28/2019	DATE -	REVISED -

**STATE OF ILLINOIS
DEPARTMENT OF TRANSPORTATION**

**IL RTE 130 ^ SKEW
CROSS SECTION**

SCALE: 2.5V:5H SHEET 1 OF 1 SHEETS STA. 818+45.4 TO STA. 818+45.4

F.A.P. RTE. 332	SECTION 19CLV	COUNTY CRAWFORD	TOTAL SHEETS 16	SHEET NO. 16
			CONTRACT NO. 74886	
		ILLINOIS FED. AID PROJECT		