

MODEL: D:\a\h\l
 FILE NAME: P:\02166-29\BAP_10_IL_267_3BR-1_Lick_Creek_76K57\CADD_Sheets\0276K57-shs-500.dgn

CODE NO.	ITEM	UNIT	TOTAL QUANTITY	CONSTRUCTION CODE	
				80% FED 20% STATE	
				BRIDGE 0013	
				SN 031-0016	
50300225	CONCRETE STRUCTURES	CU YD	3.7	3.7	
50300255	CONCRETE SUPERSTRUCTURE	CU YD	175	175	
50300260	BRIDGE DECK GROOVING	SQ YD	470	470	
50300300	PROTECTIVE COAT	SQ YD	694	694	
50500405	FURNISHING AND ERECTING STRUCTURAL STEEL	POUND	4280	4280	
50800205	REINFORCEMENT BARS, EPOXY COATED	POUND	44,370	44,370	
50800515	BAR SPLICERS	EACH	565	565	
50901050	STEEL RAILING, TYPE SM	FOOT	386	386	⚠
51500100	NAME PLATES	EACH	1	1	
52000110	PREFORMED JOINT STRIP SEAL	FOOT	65	65	
52100010	ELASTOMERIC BEARING ASSEMBLY, TYPE I	EACH	6	6	
52100020	ELASTOMERIC BEARING ASSEMBLY, TYPE II	EACH	6	6	
52100505	ANCHOR BOLTS 5/8"	EACH	24	24	
52200010	TEMPORARY SHEET PILING	SQ FT	103	103	

⚠ REV. 4-16-2019

REV. - MS

USER NAME = mmcevers	DESIGNED - W. SLEEMAN	REVISED - 1/29/2019
PLOT SCALE = 100.0000' / in.	DRAWN - W. SLEEMAN	CHECKED - M. McEVERS
PLOT DATE = 1/29/2019	DATE - 1/2019	REVISED -

**STATE OF ILLINOIS
DEPARTMENT OF TRANSPORTATION**

SUMMARY OF QUANTITIES

SCALE: SHEET 2 OF 6 SHEETS STA. TO STA.

F.A.P. RTE.	SECTION	COUNTY	TOTAL SHEETS	SHEET NO.
10	3BR-1	GREENE	35	4
CONTRACT NO. 76K57				
ILLINOIS FED. AID PROJECT				

EARTHWORK		
LOCATION STATION TO STATION	EARTH EXCAVATION	WASTE (FOR INFO ONLY)
	CU YD	CU YD
STA. 382+98.00 TO 384+43.00 LEFT	11.6	11.6
STA. 38302+00 TO 384+43.00 RIGHT	11.3	11.3
STA. 386+37.00 TO 387+76.00 RIGHT	11.1	11.1
STA. 386+37.00 TO 387+81.00 LEFT	11.6	11.6
TOTAL	45.6	45.6

1-EXCAVATION REQUIRED FOR HMA SHOULDERS

PAVEMENT				
LOCATION STATION TO STATION	PAVEMENT REMOVAL	CL B PATCHES TYPE II 10 INCH (SPECIAL)	SAW CUTS	TIE BARS 1 1/4"
	SQ YD	SQ YD	FOOT	EACH
STA. 384+36.79 TO 384+43.04 LEFT	7.7	11.1	32.0	10
STA. 384+36.79 TO 384+43.04 RIGHT	7.7	11.1	32.0	10
STA. 384+36.79 TO 384+43.04 CL			6.3	
STA. 386+36.96 TO 386+43.21 CL			6.3	
STA. 386+36.96 TO 386+43.21 LEFT	7.7	11.1	32.0	10
STA. 386+36.96 TO 386+43.21 RIGHT	7.7	11.1	32.0	10
TOTAL	30.8	44.4	140.6	40

CONCRETE BARRIERS						
LOCATION STATION TO STATION	TEMPORARY CONCRETE BARRIER	RELOCATE TEMPORARY CONCRETE BARRIER	IMPACT ATTENUATORS, TEMPORARY (FULLY REDIRECTIVE, NARROW) TEST LEVEL 3	IMPACT ATTENUATORS, RELOCATE (FULLY REDIRECTIVE, NARROW) TEST LEVEL 3	TEMPORARY PAVEMENT MARKING - LINE 6"	PINNING TEMPORARY CONCRETE BARRIER
	FOOT	FOOT	EACH	EACH	FOOT	EACH
STAGE I						
STA. 383+09.00 TO 384+08.50 TAPER	100.0		1		100.0	6
STA. 384+08.50 TO 386+71.00	262.5				262.5	
STA. 386+71.00 TO 387+70.00 TAPER	100.0		1		100.0	6
STAGE II						
STA. 383+09.00 TO 384+08.50 TAPER		100.0		1	100.0	3
STA. 384+08.50 TO 386+71.00		262.5			262.5	
STA. 386+71.00 TO 387+70.00 TAPER		100.0		1	100.0	3
TOTAL	462.5	462.5	2	2	925.0	18

SHOULDERS						
LOCATION STATION TO STATION	PAVED SHOULDER REMOVAL	AGGREGATE SHOULDERS, TYPE B	BITUMINOUS MATERIALS (TACK COAT)	HOT-MIX ASPHALT SHOULDERS, 10"	SHOULDER RUMBLE STRIPS, 8 INCH	AGGREGATE WEDGE SHOULDERS, TYPE B
	SQ YD	TON	POUND	SQ YD	FOOT	TON
	STA. 382+98.00 TO 384+43.04 LEFT	50.5	15.1	39.9	80.6	138.8
STA. 383+02.00 TO 384+43.04 RIGHT	49.2	15.6	38.8	78.4	134.8	1.6
STA. 386+36.96 TO 387+81.00 LEFT	50.1	14.9	39.6	80.0	137.8	1.6
STA. 386+36.96 TO 387+76.00 RIGHT	48.5	14.9	38.2	77.2	132.8	0.9
STA. 384+36.79 TO 384+43.04 LEFT (FOR PATCH)	3.5					
STA. 384+36.79 TO 384+43.04 RIGHT (FOR PATCH)	3.5					
STA. 386+36.96 TO 386+43.21 LEFT (FOR PATCH)	3.5					
STA. 386+36.96 TO 386+43.21 RIGHT (FOR PATCH)	3.5					
TOTAL	212.3	60.5	156.5	316.2	544.2	5.1

NOTE: BITUMINOUS MATERIALS (TACK COAT) INCLUDES 2 APPLICATIONS

GUARDRAIL							
LOCATION STATION TO STATION	GUARDRAIL REMOVAL	STEEL PLATE BEAM GUARDRAIL, TYPE A, 6 FOOT POSTS	TRAFFIC BARRIER TERMINAL, TYPE 6A	TRAFFIC BARRIER TERMINAL, TY 1 (SPECIAL) TANGENT	GUARDRAIL REFLECTORS, TYPE A	BARRIER WALL REFLECTORS, TYPE C	TERMINAL MARKER- DIRECT APPLIED
	FOOT	FOOT	EACH	EACH	EACH	EACH	EACH
STA. 382+66.70 TO 384+42.79 RIGHT	176.1						
STA. 383+40.10 TO 384+42.79 LEFT	102.7						
STA. 386+37.21 TO 387+50.80 RIGHT	113.6						
STA. 386+37.21 TO 388+15.00 LEFT	177.8						
STA. 383+18.35 TO 384+05.85 RIGHT		87.5	1	1			1
STA. 383+68.35 TO 384+05.85 LEFT		37.5	1	1			1
STA. 386+74.15 TO 387+11.65 RIGHT		37.5	1	1			1
STA. 386+74.15 TO 387+61.65 LEFT		87.5	1	1			1
STA. 382+68.00 TO 384+43.04 RIGHT						2	
STA. 383+18.00 TO 384+43.04 LEFT						1	
STA. 384+43.04 TO 386+36.96 RIGHT							4
STA. 384+43.04 TO 386+36.96 LEFT							4
STA. 386+36.96 TO 387+62.00 RIGHT						1	
STA. 386+36.96 TO 388+12.00 LEFT						2	
TOTAL	570.2	250.0	4	4	6	8	4

REFLECTIVE MARKERS			
LOCATION STATION TO STATION	REPLACEMENT REFLECTORS (AMBER)	*RAISED REFLECTIVE PAVEMENT MARKER REMOVAL	
	EACH	EACH	
STA. 381+43.00 TO 383+03.00 CENTERLINE	3	3	
STA. 387+76.00 TO 389+40.00 CENTERLINE	3	3	
TOTAL	6	6	

* ONLY REFLECTORS

TRAFFIC CONTROL							
LOCATION STATION TO STATION	TRAFFIC CONTROL & PROTECTION STD 701201	TRAFFIC CONTROL & PROTECTION STD 701321	TRAFFIC CONTROL & PROTECTION STD 701326	TEMPORARY BRIDGE TRAFFIC SIGNALS	TEMPORARY RUMBLE STRIPS (STAGE I & II)	CHANGEABLE MESSAGE SIGNS	WIDE LOAD SIGNING
	L SUM	EACH	L SUM	EACH	EACH	CAL DA	L SUM
SN 031-0016	1	1	1	1	6	28	1
TOTAL	1	1	1	1	6	28	1

PAVEMENT MARKING								
LOCATION STATION TO STATION	PAVEMENT MARKING BLACKOUT TAPE, 6"	SHORT TERM PAVEMENT MARKING	SHORT TERM PAVEMENT MARKING REMOVAL	TEMPORARY PAVEMENT MARKING LINE 4"	PAVEMENT MARKING REMOVAL - GRINDING	PREFORMED PLASTIC PVMNT MARKING, TYPE D-4"	GROOVING FOR RECESSED PAVEMENT MARKING 5"	REMARKS
	FOOT	FOOT	SQ FT	FOOT	SQ FT	FOOT	FOOT	
STA. 381+43.00 TO 382+66.00	123.0		61.5					CENTERLINE SOLID, STAGE I
STA. 381+43.00 TO 383+03.00	40.0		20.0					CENTERLINE SKIP-DASH, STAGE I
STA. 382+98.00 TO 384+37.00	139.0		69.5					LEFT EDGE LINE, STAGE II
STA. 383+02.00 TO 387+76.00	474.0		237.0					RIGHT EDGE LINE, STAGE I
STA. 386+43.00 TO 387+81.00	138.0		69.0					LEFT EDGE LINE, STAGE II
STA. 387+76.00 TO 389+40.00	50.0		25.0					CENTERLINE SKIP-DASH, STAGE I & II
STA. 388+15.00 TO 389+40.00	125.0		62.5					CENRELINE SOLID, STAGE I & II
FINAL STAGE								
STA. 384+36.79 TO 386+43.21				206.4	69.0	206.4	206.4	LEFT EDGE LINE
STA. 384+36.79 TO 386+43.21		24.0	8.0	60.0	20.0	60.0	60.0	CENTERLINE SKIP-DASH
STA. 384+36.79 TO 386+43.21				206.4	69.0	206.4	206.4	RIGHT EDGE LINE
STAGE I - STANDARD 701321 MARKING REMOVAL					409.1			STOP BAR, LEFT EDGE, RIGHT EDGE
STAGE II - STANDARD 701321 MARKING REMOVAL					415.1			STOP BAR, LEFT EDGE, RIGHT EDGE
TOTAL	1089.0	24.0	552.5	472.8	982.2	472.8	472.8	

NOTE:

FACTORS USED FOR ESTIMATING PLAN QUANTITIES ARE AS FOLLOWS AND SHALL NOT BE USED FOR THE BASIS OF FINAL QUANTITIES:

ALL HOT-MIX ASPHALT..... 112 LB/SQ YD/INCH
 BITUMINOUS MATERIALS (PRIME COAT)
 ON AGGREGATE SURFACES..... 0.25 LB/SQ FT
 BITUMINOUS MATERIALS (TACK COAT)
 ON MILLED PAVEMENTS..... 0.05 LB/SQ FT
 BETWEEN LIFTS..... 0.025 LB/SQ FT
 ALL AGGREGATE..... 2.05 TON/CU YD

REV. 4-16-2019

MODEL Dwg: 11
 FILE NAME: P:\02166-29\PAR_10_IL_267_3BR-I_Let_Creek_76K57\CADD_Sheets\02166-29\382-389\382-389.dwg

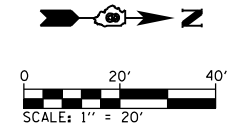
USER NAME = mmcevers	DESIGNED - W. SLEEMAN	REVISED - 4/15/2019 MGM
PLOT SCALE = 100.0000' / in.	DRAWN - W. SLEEMAN	REVISED -
PLOT DATE = 4/16/2019	CHECKED - M. MCEVERS	REVISED -
	DATE - 1/2019	REVISED -

STATE OF ILLINOIS
 DEPARTMENT OF TRANSPORTATION

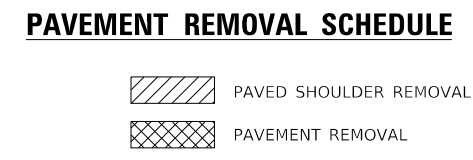
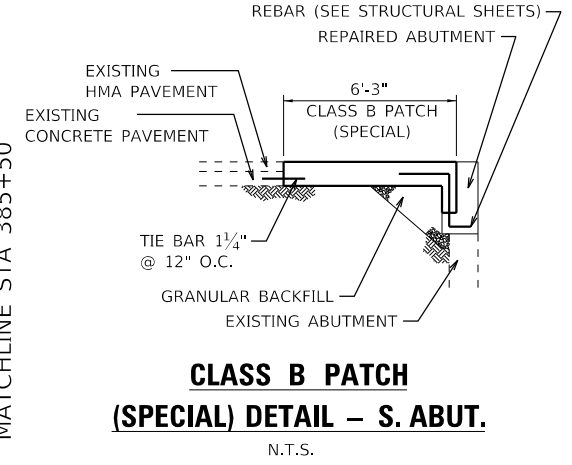
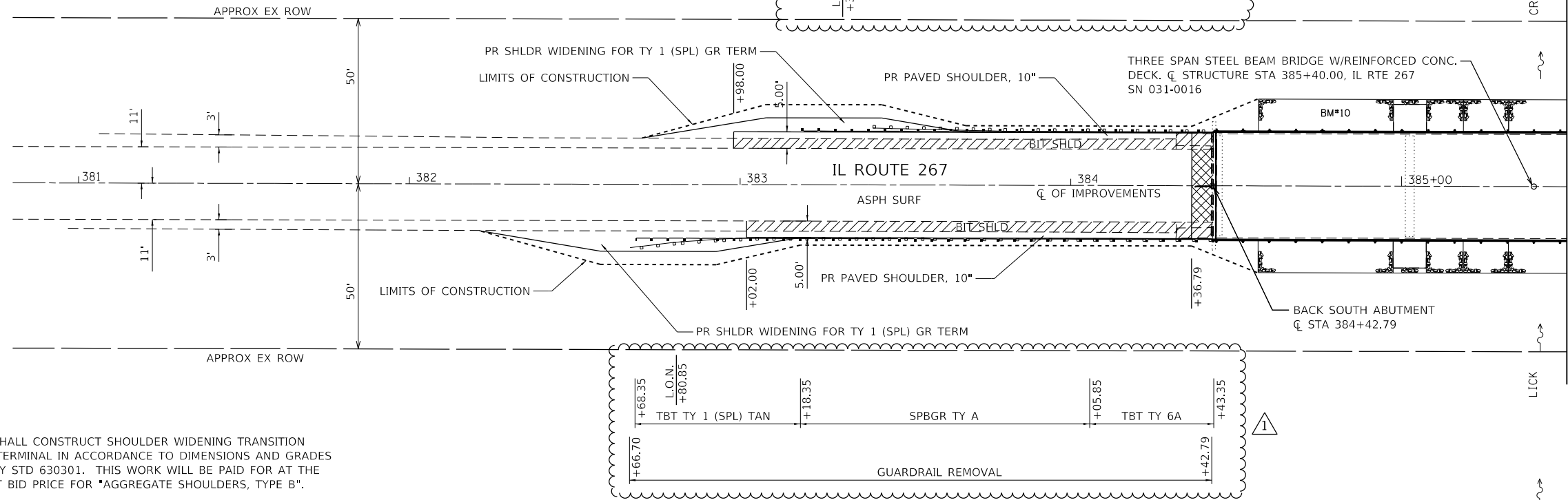
SCHEDULE OF QUANTITIES				F.A.P. RTE.	SECTION	COUNTY	TOTAL SHEETS	SHEET NO.
SCALE:	SHEET 1	OF 1	SHEETS	STA.			35	11
				TO STA.				
					ILLINOIS	FED. AID PROJECT		

BM#9:
CHISELED SQUARE IN CENTER OF WEST SIDE
OF 4'x4' BOX CULVERT, 0.5 MILE SOUTH OF
LICK CREEK, 111' WEST OF EOP. ELEV=523.88

BM#10:
CHISELED SQUARE ON SOUTHWEST ABUTMENT
WINGWALL OF SN 031-0016 ON IL RTE 267
OVER LICK CREEK. ELEV=524.94

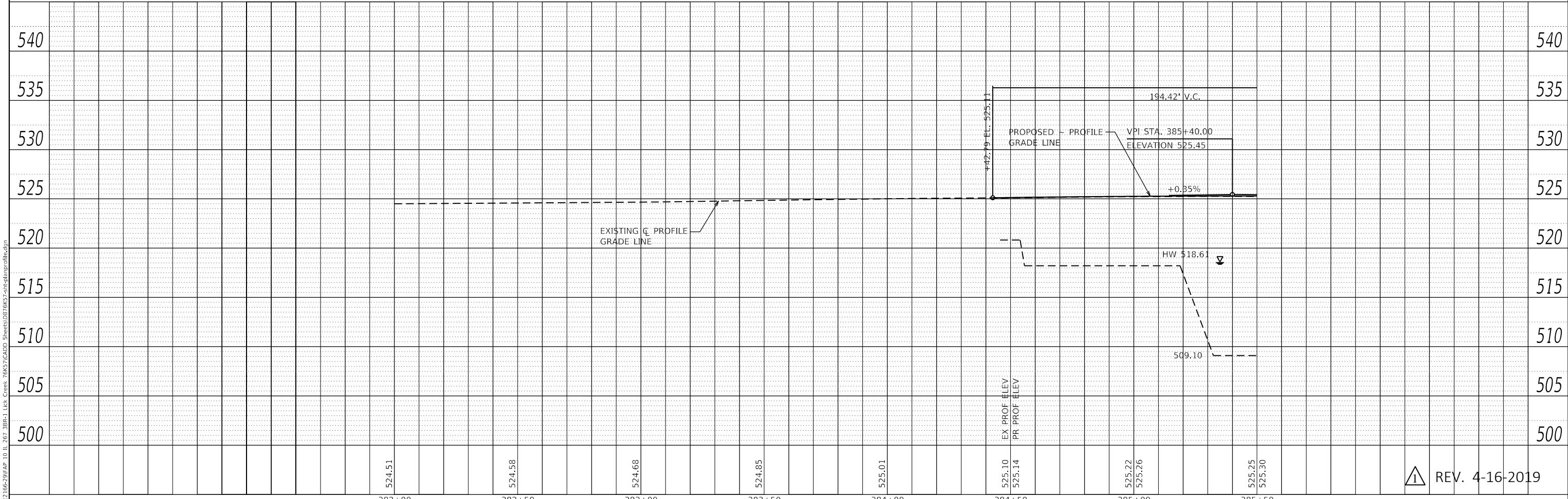


PLAN	SURVEYED	DATE
	PLOTTED	
	ALIGNMENT CHECKED	
	NOTE BOOK	
	NO.	
	CADD FILE NAME	



NOTE:
CONTRACTOR SHALL CONSTRUCT SHOULDER WIDENING TRANSITION FOR TANGENT TERMINAL IN ACCORDANCE TO DIMENSIONS AND GRADES SHOWN ON HWY STD 630301. THIS WORK WILL BE PAID FOR AT THE CONTRACT UNIT BID PRICE FOR "AGGREGATE SHOULDERS, TYPE B".

PROFILE	SURVEYED	DATE
	PLOTTED	
	GRADES CHECKED	
	NOTE BOOK	
	NO.	
	STRUCTURE NOTATION	



REV. 4-16-2019

USER NAME = mmcevers	DESIGNED - W. SLEEMAN	REVISED - 4/15/20 MGM
	DRAWN - W. SLEEMAN	REVISED -
PLOT SCALE = 40,0000' / in.	CHECKED - M. McEVERS	REVISED -
PLOT DATE = 4/16/2019	DATE - 1/2019	REVISED -

**STATE OF ILLINOIS
DEPARTMENT OF TRANSPORTATION**

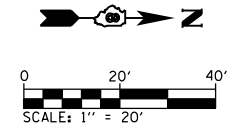
PLAN & PROFILE IL ROUTE 267			
SCALE:	SHEET 1	OF 2	SHEETS
	STA. 382+21.25 TO STA. 385+50		

F.A.P. RTE.	SECTION	COUNTY	TOTAL SHEETS	SHEET NO.
10	3BR-1	GREENE	35	13
CONTRACT NO. 76K57				
ILLINOIS FED. AID PROJECT				

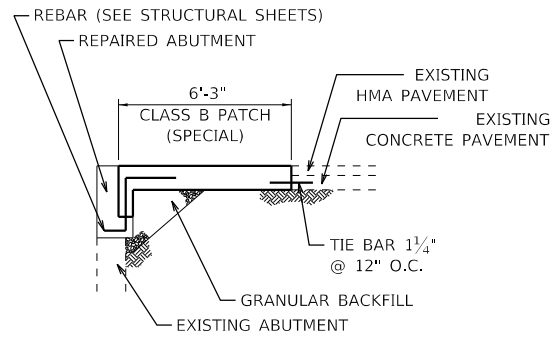
MODEL: Default
FILE NAME: P:\02166299\AP 10 IL 267 3BR-1 Lick Creek 76K57\CADD Sheets\02166299\02166299.dgn

BM#9:
CHISELED SQUARE IN CENTER OF WEST SIDE
OF 4'x4' BOX CULVERT, 0.5 MILE SOUTH OF
LICK CREEK, 111' WEST OF EOP. ELEV=523.88

BM#10:
CHISELED SQUARE ON SOUTHWEST ABUTMENT
WINGWALL OF SN 031-0016 ON IL RTE 267
OVER LICK CREEK. ELEV=524.94

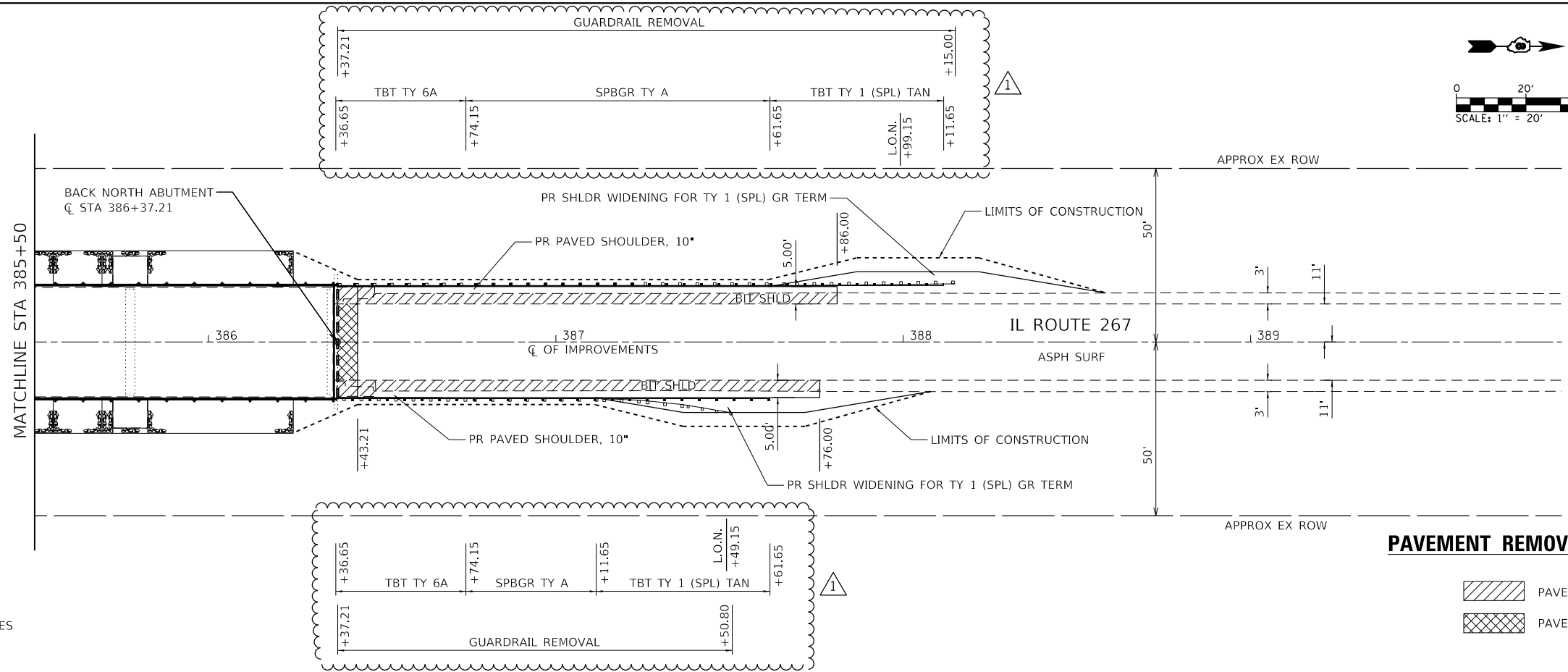


PLAN	SURVISED	DATE
	PLOTTED	
	ALIGNED	
	CHECKED	
	FILE NAME	
	NO.	



**CLASS B PATCH
(SPECIAL) DETAIL - N. ABUT.**
N.T.S.

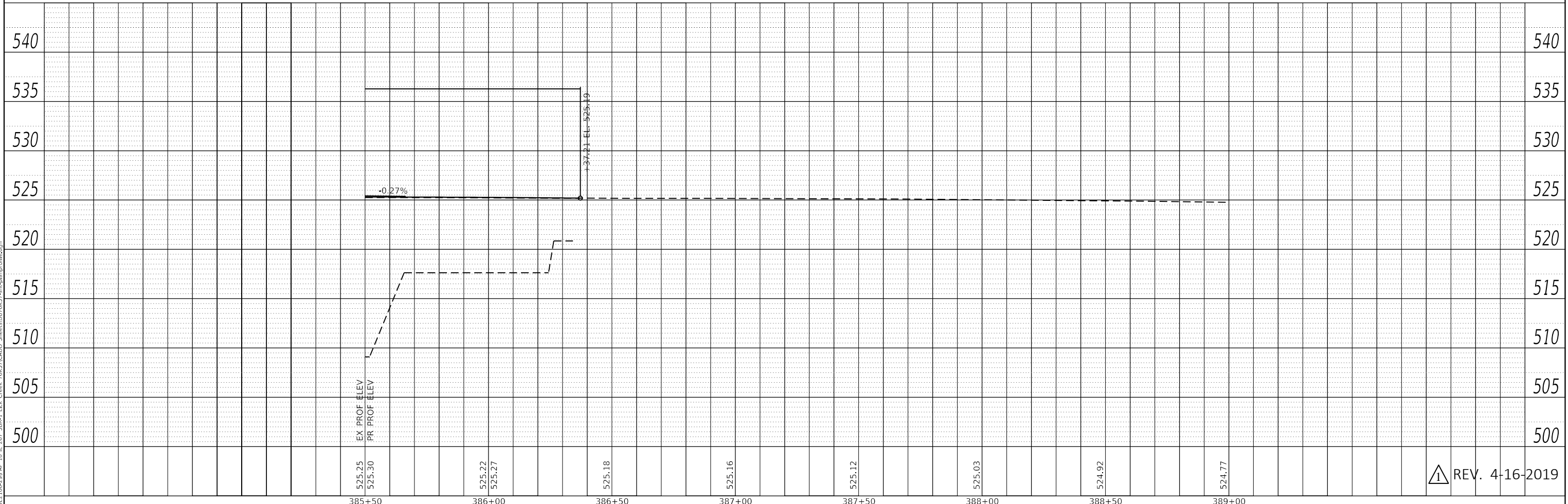
NOTE:
CONTRACTOR SHALL CONSTRUCT SHOULDER WIDENING TRANSITION
FOR TANGENT TERMINAL IN ACCORDANCE TO DIMENSIONS AND GRADES
SHOWN ON HWY STD 630301. THIS WORK WILL BE PAID FOR AT THE
CONTRACT UNIT BID PRICE FOR "AGGREGATE SHOULDERS, TYPE B".



PAVEMENT REMOVAL SCHEDULE

- PAVED SHOULDER REMOVAL
- PAVEMENT REMOVAL

PROFILE	SURVISED	DATE
	PLOTTED	
	GRADES	
	CHECKED	
	NOTATION	
	NO.	



MODEL: Default
FILE NAME: P:\02\166-29\APP ID IL 267 3BR-1 Lick Creek 76K57\CADD Sheets\02\166-29\plan\profile.dgn

USER NAME = mmcevers	DESIGNED - W. SLEEMAN	REVISED - 4/15/20 MGM
	DRAWN - W. SLEEMAN	REVISED -
PLOT SCALE = 40,0000 ' / in.	CHECKED - M. McEVERS	REVISED -
PLOT DATE = 4/16/2019	DATE - 1/2019	REVISED -

**STATE OF ILLINOIS
DEPARTMENT OF TRANSPORTATION**

PLAN & PROFILE IL ROUTE 267

SCALE: SHEET 2 OF 2 SHEETS STA. 385+50 TO STA. 388+58.42

F.A.P. RTE.	SECTION	COUNTY	TOTAL SHEETS	SHEET NO.
10	3BR-1	GREENE	35	14
CONTRACT NO. 76K57				
ILLINOIS		FED. AID PROJECT		

REV. 4-16-2019

GENERAL NOTES

1. Fasteners shall be AASHTO M164 Type 1, mechanically galvanized bolts. Bolts 7/8" φ, holes 15/16" φ, unless otherwise noted.
2. No field welding is permitted except as specified in the contract documents.
3. The Contractor shall test the existing welds by non-destructive methods within 2 ft. of the end of the existing cover plates for cracks after removal of the existing concrete deck. After deck removal, the Contractor shall test all existing top coverplate welds for cracks using non-destructive methods. Dye penetrant (PT), magnetic particle (MT), or other approved testing method shall be performed by qualified personnel approved by the Engineer. If cracks are found, report them to the Bureau of Bridges and Structures for disposition. The cost of testing is included in the Removal of Existing Concrete Deck. The cost of crack repair, if necessary, will be paid for according to Article 109.04 of the Standard Specifications.
4. Reinforcement bars designated (E) shall be epoxy coated.
5. Prior to pouring the new concrete deck, all heavy or loose rust, loose mill scale, and other loose or potentially detrimental foreign material shall be removed from the surfaces in contact with concrete. Tightly adhered paint may remain unless otherwise noted. Removal shall be accomplished by methods that will not damage the steel and the cost will be included in the pay item covering removal of the existing concrete. As directed by the Engineer, existing construction accessories welded to the top flange of beams and girders shall be removed. The weld areas shall be ground flush and inspected for cracks using magnetic particle testing (MT) or dye penetrant testing (PT) by qualified personnel and reported to the Bureau of Bridges and Structures for further disposition. The cost of removing welded accessories, grinding and inspecting weld areas and grinding cracks will be paid for according to Article 109.04 of the Standard Specifications.
6. Plan dimensions and details relative to existing plans are subject to nominal construction variations. The Contractor shall field verify existing dimensions and details affecting new construction and make necessary approved adjustments prior to construction or ordering of materials. Such variations shall not be cause for additional compensation for a change in scope of the work, however, the Contractor will be paid for the quantity actually furnished at the unit price bid for the work.
7. Concrete Sealer shall be applied to the designated areas of the Abutments.
8. The existing structural steel coating contains lead. The Contractor shall take appropriate precautions to deal with the presence of lead on this project.
9. Layout of the slope protection system may be varied to suit ground conditions in the field as directed by the Engineer.
10. Structural Steel shall be galvanized, where noted in the plans, in accordance with Hot-Dip Galvanizing for Structural Steel Special Provision. Cost included with Furnishing and Erecting Structural Steel.
11. Existing structural steel that will be in contact with new structural steel shall be cleaned and painted prior to erection as required by the Special Provisions "Cleaning & Painting Contact Surface Areas of Existing Steel Structures".

12. Cleaning and painting of the existing structural steel shall be as specified in the special provision for "Cleaning and Painting Existing Steel Structures". All beams, bearings and other structural steel within 5 ft (measured along the beam) of either side of deck joints shall be cleaned per Near White Blast Cleaning - SSPC-SP10. The exterior surfaces and bottom of the bottom flange of the fascia beams shall be cleaned per Commercial Grade Power Tool Cleaning - SSPC-SP15.

The designated areas cleaned per Near White Blast Cleaning and per Commercial Grade Power Tool Cleaning shall be painted according to the requirements of Paint System 1 - 0Z/E/U. The color of the final finish coat for all interior steel surfaces shall be Gray, Munsell No 5B 7/1. The color of the final finish coat for the exterior and bottom flange of the fascia beams shall be (**).

13. "The Organic Zinc Rich Primer/Epoxy/Urethane" paint system shall be used for painting of new non-galvanized structural steel except where otherwise noted. The entire system shall be shop applied, with the exception that the exterior surfaces and bottom of the bottom flange of the fascia beams, masked off connection surfaces, and field installed fasteners, all of which shall be touched up and finish coated in the field. The color of the final finish coat for all interior steel surfaces shall be gray, Munsell No. 5B 7/1. The color of the final coat for the exterior and bottom flange of the fascia beams shall be Gray, Munsell No. 5B 7/1.

**SN 031-0016
TOTAL BILL OF MATERIAL**

ITEM	UNIT	SUPER	SUB	TOTAL
Stone Riprap, Class A5	Sq. Yd.		895	895
Filter Fabric	Sq. Yd.		915	915
Concrete Removal	Cu. Yd.		6.7	6.7
Removal of Existing Concrete Deck	Each	1		1
Structure Excavation	Cu. Yd.		7.0	7.0
Concrete Structures	Cu. Yd.		3.7	3.7
Concrete Superstructure	Cu. Yd.	175		175
Bridge Deck Grooving	Sq. Yd.	470		470
Protective Coat	Sq. Yd.	694		694
Furnishing and Erecting Structural Steel	Pound	4,280		4,280
Reinforcement Bars, Epoxy Coated	Pound	43,080	1,290	44,370
Bar Splicers	Each	16	549	565
Steel Railing, Type SM	Foot	386		386
Name Plates	Each	1		1
Preformed Joint Strip Seal	Foot	65		65
Elastomeric Bearing Assembly, Type I	Each	6		6
Elastomeric Bearing Assembly, Type II	Each	6		6
Anchor Bolts, 5/8"	Each		24	24
Temporary Sheet Piling	Sq. Ft.		103	103
Concrete Sealer	Sq. Ft.		72	72
Granular Backfill for Structures	Cu. Yd.		7.0	7.0
Jack and Remove Existing Bearings	Each		12	12
Structural Steel Removal	Pound	2,960		2,960
Structural Steel Repair	Pound	1,340		1,340
Bridge Curb or Hubguard Repair	Foot	16		16
Containment and Disposal of Lead Paint Cleaning Residues	L. Sum	1		1
Cleaning and Painting Steel Bridge No. 1	L. Sum	1		1
Structural Repair of Concrete (Depth <=5")	Sq. Ft.		9	9
Deck Slab Repair (Full Depth, Type I)	Sq. Yd.	1		1

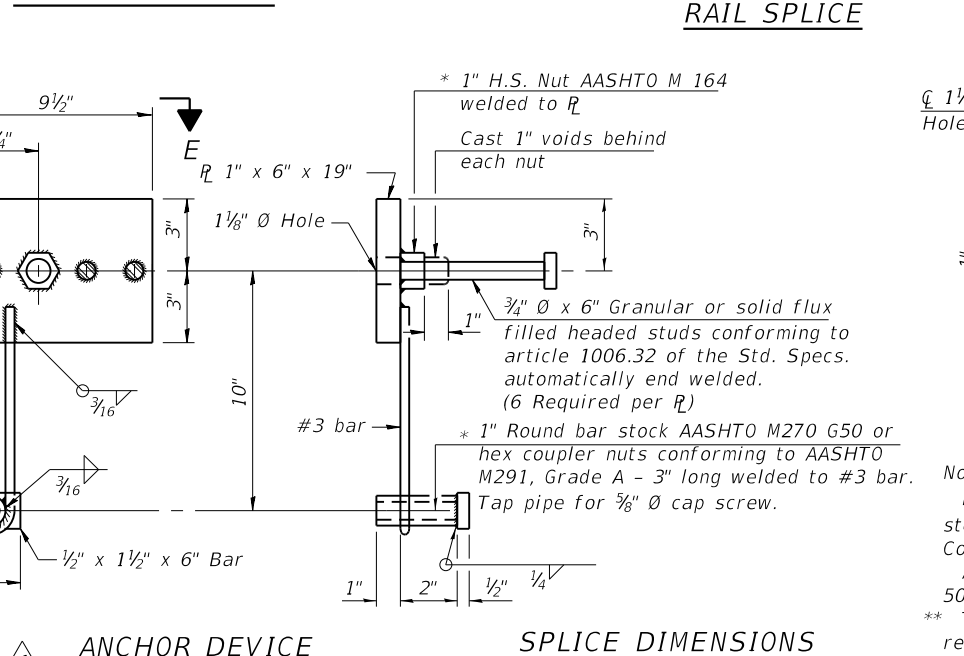
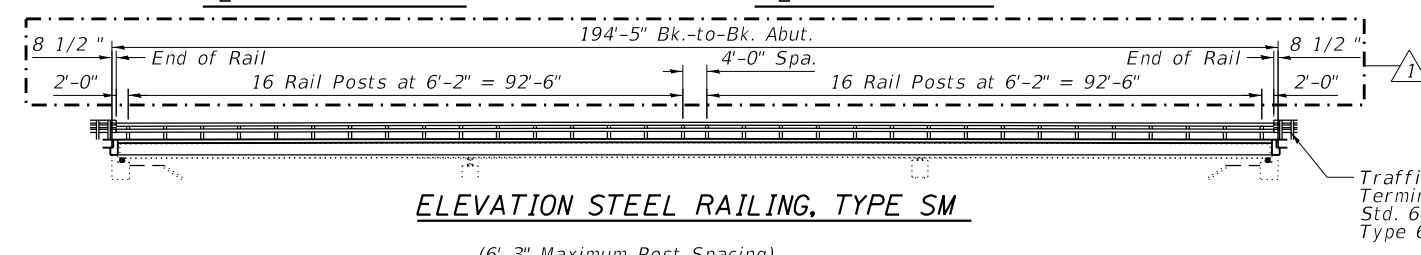
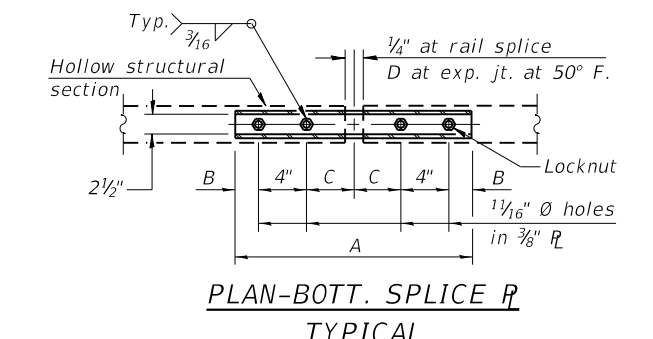
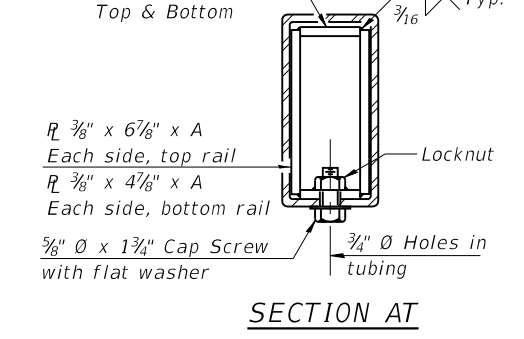
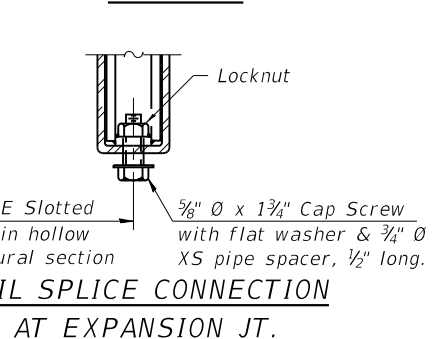
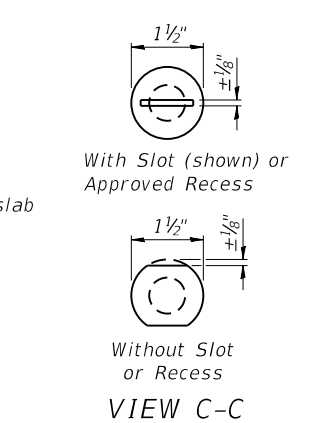
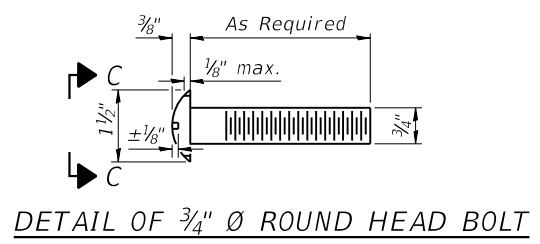
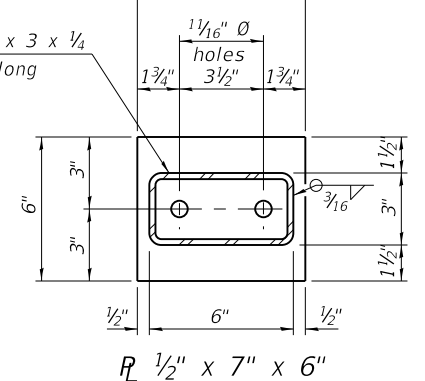
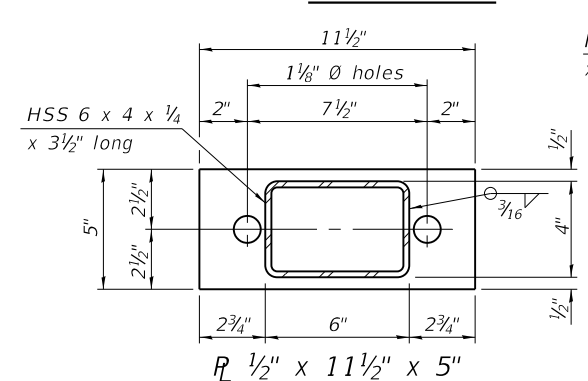
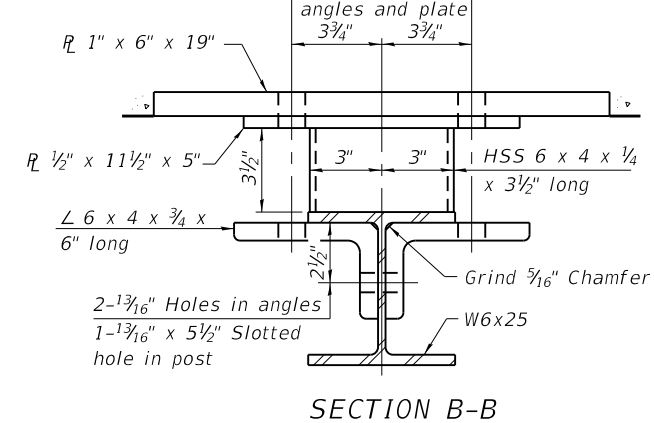
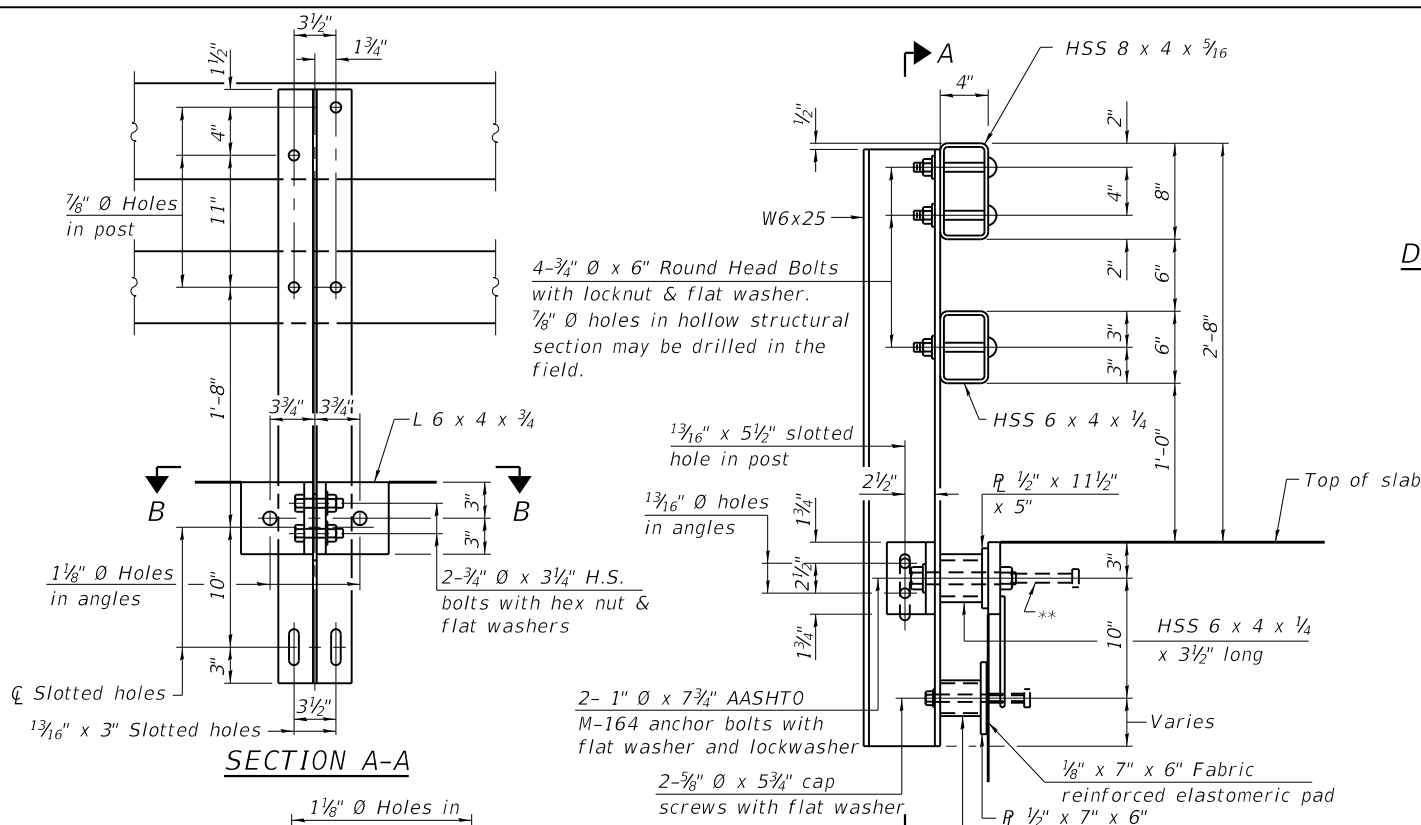
MODEL: Layout1
FILE NAME: P:\10E2166-29\FAP_10_IL_267_3BR-1_Lick_Creek_76K57\CADD_Sheets\Structure_Sheets\0310016-76K57-002-Data.dgn

BENTON & ASSOCIATES, INC.

REV. 4-16-2019

USER NAME =	DESIGNED - MBH	REVISED - 3/14/2019	STATE OF ILLINOIS DEPARTMENT OF TRANSPORTATION	GENERAL DATA STRUCTURE NO. 031-0016	F.A.P. RTE.	SECTION	COUNTY	TOTAL SHEETS	SHEET NO.	
CHECKED - RHB	REVISOR - RHB	REVISED - 4/17/2019 MBH			10	3BR-1	GREENE	35	17	
PLOT SCALE =	DRAWN - MBH	REVISED -			CONTRACT NO. 76K57					
PLOT DATE =	CHECKED - RHB	REVISED -			SHEET 2 OF 20 SHEETS					
				ILLINOIS FED. AID PROJECT						

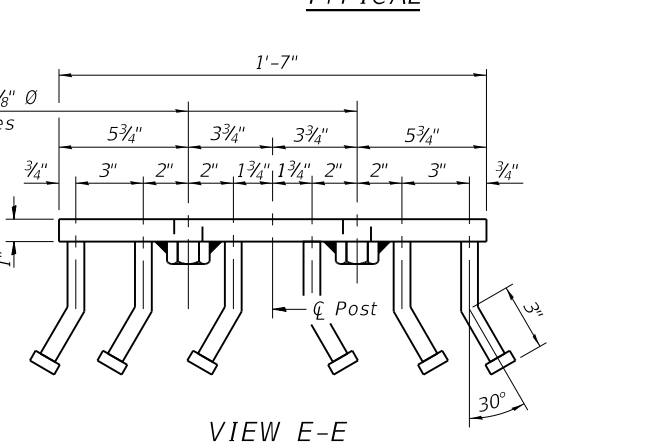
MODEL: Layout1
FILE NAME: P:\10E2166-29\FAP 10 IL 267_3BR-1 Lick Creek 76K57\CADD Sheets\Structure Sheets\0310016-76K57-011-Railing.dgn
4/15/2019 9:42:46 AM



SPLICE DIMENSIONS

T	D	A	B	C	E
≤ 4"	2 1/2"	1'-8"	2"	4"	2 1/2"
> 4" ≤ 6 1/2"	3 3/4"	2'-0"	2 1/2"	5 1/2"	3 1/2"
> 6 1/2" ≤ 9"	5"	2'-4"	3 1/2"	6 1/2"	9"
> 9" ≤ 13"	7"	2'-10"	4 1/2"	8 1/2"	11"
Rail Splice	1/4"	1'-8"	2"	4"	

T = Total movement at expansion joint as shown on the design plans.



Notes:

For multi-span bridges, sufficient 1/4" x 6" x 1'-2" galvanized steel shims shall be provided to align rail between adjacent spans. Cost included with Steel Railing, Type SM.

All steel rail members shall be galvanized according to Article 509.05 of the Standard Specifications.

** The studs of the anchor devices shall be placed below the top reinforcement bars and the outermost longitudinal reinforcement bar shall be placed directly above the studs of the rail post anchor device. The anchorage studs may be bent down 1/2" to accommodate the top reinforcement bar placement.

BILL OF MATERIAL

Item	Unit	Quantity
Steel Railing, Type SM	Foot	1,386.1

BENTON & ASSOCIATES, INC.

USER NAME =	DESIGNED - MBH	REVISED - 4/11/2019 MBH
PLOT SCALE =	CHECKED - RHB	REVISED -
PLOT DATE =	DRAWN - MBH	REVISED -
	CHECKED - RHB	REVISED -

**STATE OF ILLINOIS
DEPARTMENT OF TRANSPORTATION**

**STEEL RAILING, TYPE SM
STRUCTURE NO. 031-0016**

REV. 4-16-2019

F.A.P. RTE. 10	SECTION 3BR-1	COUNTY GREENE	TOTAL SHEETS 35	SHEET NO. 26
CONTRACT NO. 76K57				
ILLINOIS FED. AID PROJECT				