

STATE OF ILLINOIS
DEPARTMENT OF TRANSPORTATION

F.A.P. RYE.	SECTION	COUNTY	TOTAL SHEETS	SHEET NO.
42	112CLV-1	CLINTON	14	1
		ILLINOIS	CONTRACT NO. 76M15	

D-98-020-19



LOCATION OF SECTION INDICATED THIS: - [shaded rectangle] -

FOR INDEX OF SHEETS, SEE SHEET NO. 2

TRAFFIC DATA

IL 127
ADT: 4100
SU: 5%
MU: 10%

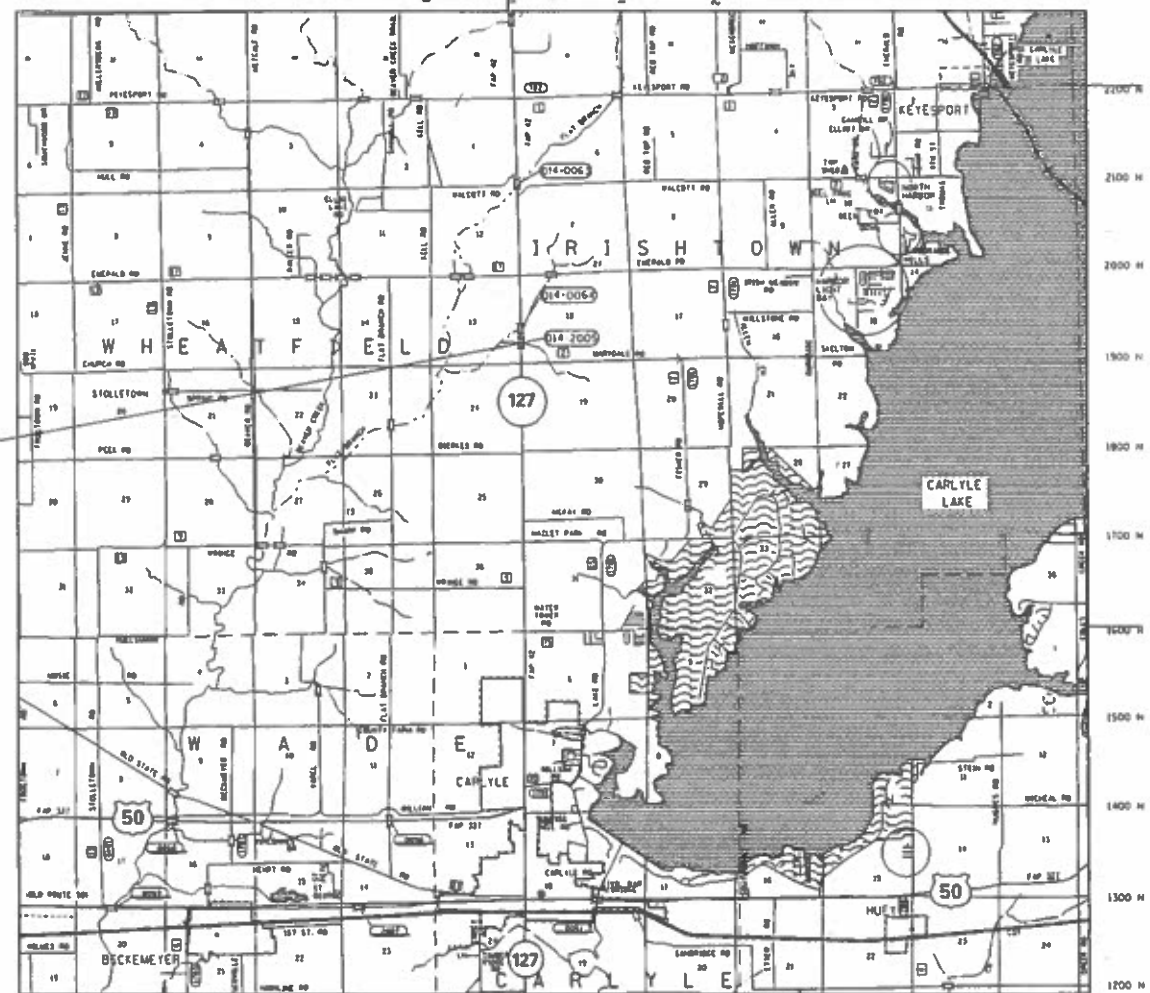
FUNCTIONAL CLASSIFICATION:
MINOR ARTERIAL (IL 127)

PROPOSED
HIGHWAY PLANS

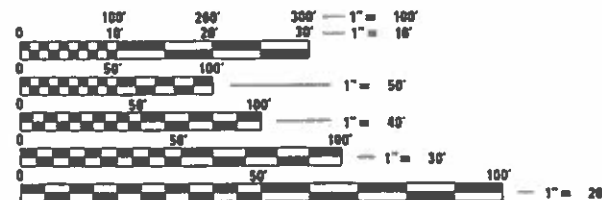
FAP ROUTE 42 (IL 127)
SECTION 112CLV-1

SLAB ON SLAB REPAIR
CLINTON COUNTY

C-98-025-19



PROJECT LOCATION
STA. 328+76 TO 329+78
LAT: 38.700782
LONG: -89.372035



FULL SIZE PLANS HAVE BEEN PREPARED USING STANDARD ENGINEERING SCALES. REDUCED SIZED PLANS WILL NOT CONFORM TO STANDARD SCALES. IN MAKING MEASUREMENTS ON REDUCED PLANS, THE ABOVE SCALES MAY BE USED.

J.U.L.I.E.
JOINT UTILITY LOCATION INFORMATION FOR EXCAVATORS
1-800-892-0123
OR 811

PROJECT ENGINEER: HERVE GELIN (618) 346-3179
PROJECT MANAGER: ALVIN NIEVES-ROSARIO (618) 346-3141

GROSS LENGTH = 102 FT. = 0.019 MILE
NET LENGTH = 102 FT. = 0.019 MILE

NOT TO SCALE

CONTRACT NO. 76M15

STATE OF ILLINOIS
DEPARTMENT OF TRANSPORTATION

SUBMITTED Feb 4 20 19
Keith Roberts
REGIONAL ENGINEER
March 22 20 19
ENGINEER OF DESIGN AND ENVIRONMENT
March 22 20 19
DIRECTOR OF HIGHWAYS PROJECT IMPLEMENTATION

PRINTED BY THE AUTHORITY
OF THE STATE OF ILLINOIS

INDEX OF SHEETS

- 1 COVER SHEET
- 2 INDEX OF SHEETS, GENERAL NOTES, HIGHWAY STANDARDS AND COMMITMENTS
- 3 SUMMARY OF QUANTITIES
- 4 TYPICAL SECTIONS
- 5 SCHEDULE OF QUANTITIES
- 6 DETAILS
- 7-14 CULVERT PLANS

HIGHWAY STANDARDS

000001-07	701301-04
001001-02	701306-04
001006	701311-03
482001-02	701321-17
701001-02	701901-08
701006-05	704001-08
701011-04	780001-05
701201-05	781001-04

GENERAL NOTES

- 1 ILLINOIS STATE LAW REQUIRES A 48-HOUR NOTICE TO BE GIVEN TO UTILITIES BEFORE DIGGING. FIELD MARKING OF FACILITIES MAY BE OBTAINED BY CONTACTING J.U.L.I.E. (1-800-892-0123 OR 811) OR FOR NON-MEMBERS THE UTILITY COMPANY DIRECTLY.
- 2 THE CONTRACTOR AND THE ENGINEER SHALL BE AWARE THAT NO SURVEY WAS PERFORMED FOR THIS PROJECT. THE STATIONING, TOPOGRAPHY, AND QUANTITIES SHOWN IN THE PLANS WERE CREATED USING MICROFILM AND FIELD MEASUREMENTS. ALL SHALL BE ASSUMED TO BE APPROXIMATE. THE CONTRACTOR SHALL VERIFY DIMENSIONS AND CONDITIONS IN THE FIELD PRIOR TO CONSTRUCTION AND ORDERING OF MATERIALS.
- 3 THE THICKNESS OF HOT-MIX ASPHALT SURFACE MIXTURES SHOWN ON THE PLANS IS THE NOMINAL THICKNESS. DEVIATIONS MAY OCCUR DUE TO IRREGULARITIES IN THE EXISTING SURFACE OR BASE ON WHICH THE BITUMINOUS MIXTURE IS PLACED.
- 4 AN ESTIMATED QUANTITY OF 15 TONS OF CUTTINGS FROM THE HOT-MIX ASPHALT SURFACE REMOVAL OPERATION IS ANTICIPATED.
- 5 A QUANTITY OF 272 FEET OF TEMPORARY PAVEMENT MARKING – LINE 6" WHITE HAS BEEN INCLUDED IN THE PLANS FOR PAINTING THE BOTTOM 6" OF THE TEMPORARY CONCRETE BARRIER.
- 6 THE DEPARTMENT STRONGLY ENCOURAGES THE PRIME CONTRACTOR AND THEIR APPROVED SUB-CONTRACTORS TO HIRE MINORITY, WOMEN AND DISADVANTAGED INDIVIDUALS FROM ITS FEDERALLY FUNDED HIGHWAY CONSTRUCTION CAREERS TRAINING PROGRAM (HCCTP) TO HELP MEET WORKFORCE AND TRAINEE GOALS. THIS PROGRAM IS TRAINING MINORITIES, WOMEN AND DISADVANTAGED INDIVIDUALS IN HIGHWAY CONSTRUCTION-RELATED SKILLS, E.G., MATH FOR THE TRADES, JOB READINESS, TECHNICAL SKILLS COURSEWORK (CARPENTRY, CONCRETE FLATWORK, BLUEPRINT READING, SITE PLANS, SITE WORK, TOOLS USE, ETC.) AND OSHA 10 HOUR CERTIFICATION, TO PREPARE THEM FOR A CAREER IN THE HIGHWAY CONSTRUCTION TRADES. GRADUATES ARE WELL-TRAINED AND READY TO BECOME PRODUCTIVE ENTRY-LEVEL CONSTRUCTION WORKERS. CONTACT THE DISTRICT 8 EEO OFFICE AT 618-346-3360 AND/OR THE HCCTP COORDINATOR AT 618-874-6528 TO LEARN MORE ABOUT THE PROGRAM AND FOR ASSISTANCE IN MEETING WORKFORCE AND TRAINEE GOALS.
- 7 "ROAD CONSTRUCTION AHEAD" SIGNS SHALL BE PLACED AT EACH END OF THE PROJECT PLUS THE INTERSECTING SIDE ROADS, AND WILL BE CONSIDERED INCLUDED IN THE TRAFFIC CONTROL PAY ITEMS. ALL CONSTRUCTION SIGNS SHALL BE 48" X 48" FLUORESCENT ORANGE.
- 8 PROJECT SHALL BE CONSTRUCTED WITHOUT DISTURBING THE EXISTING GUARDRAIL OR THE EXISTING BRIDGE RAIL.

NO COMMITMENTS

MIXTURE REQUIREMENTS

ROUTE	FAP 42 (IL 127)
SECTION	112CLV-1
COUNTY	Clinton
CONTRACT	76M15

DESCRIPTION:	Slab on Slab Repair on IL 127 over Mid Trib Flat Branch 2.8 mi S of Bond County Line (SN 014-2005)
--------------	--

ADT (Construction Yr)	3550
MU%:	10
SU%:	5
20 YR. ESAL'S:	2.11

MIXTURE USE	SURFACE	BINDER
AC/PG	PG 64-22	PG 64-22
RAP % (MAX)	SEE SPECIAL	SEE SPECIAL
DESIGN AIR VOIDS	4.0% @ Ndes=70	4.0% @ Ndes=70
MIX COMPOSITION (Gradation)	IL 9.5	IL 19.0
FRICITION AGG	MIXTURE "D"	MIXTURE "B"
QUALITY MGMT PROGRAM	QC/QA	QC/QA

MIXTURE USE	SHOULDERS > 2.25'	SHOULDERS < 2.25'
AC/PG	PG 64-22	PG 64-22
RAP % (MAX)	SEE SPECIAL	SEE SPECIAL
DESIGN AIR VOIDS	4.0% @ Ndes=30	4.0% @ Ndes=30
MIX COMPOSITION (Gradation)	IL 19.0L	IL 9.5L
FRICITION AGG		
QUALITY MGMT PROGRAM	QC/QA	QC/QA

Plan quantities for Bituminous Concrete Surface Course items are calculated using a unit weight of 112 lbs/sq yd/in (59.8 kg/sq m/25 mm thickness).

MODEL: \$MODELNAME
FILE: Name: P:\11108\BID\INTEC\Illinois.gov\PWIDOT\Documents\DOT_Offices\District 8\Projects\0876M15\CADD\DATA\CAD\Sheet\0876M15-shr-genote.dgn

USER NAME = bergmd	DESIGNED - _____	REVISED - _____
	DRAWN - _____	REVISED - _____
PLOT SCALE = 2.0000' / in.	CHECKED - _____	REVISED - _____
PLOT DATE = 2/7/2019	DATE - _____	REVISED - _____

STATE OF ILLINOIS
DEPARTMENT OF TRANSPORTATION

INDEX OF SHEETS, GENERAL NOTES,
HIGHWAY STANDARDS AND COMMITMENTS

SCALE: _____ SHEET 1 OF 1 SHEETS STA. _____ TO STA. _____

F.A.P. RTE.	SECTION	COUNTY	TOTAL SHEETS	SHEET NO.
42	112CLV-1	CLINTON	14	2
CONTRACT NO. 76M15				
ILLINOIS FED. AID PROJECT				

CONSTR. CODE
STATE 100%
BOX CULVERT
0013
014-2005

CODE NO.	ITEM	UNIT	TOTAL QUANTITY	CONSTR. CODE
20200100	EARTH EXCAVATION	CU YD	16.5	16.5
35501308	HOT-MIX ASPHALT BASE COURSE, 6"	SQ YD	20	20
40600990	TEMPORARY RAMP	SQ YD	44.4	44.4
40603340	HOT-MIX ASPHALT SURFACE COURSE, MIX "D", N70	TON	36.5	36.5
40800029	BITUMINOUS MATERIALS (TACK COAT)	POUND	166.9	166.9
44000100	PAVEMENT REMOVAL	SQ YD	59.6	59.6
44000157	HOT-MIX ASPHALT SURFACE REMOVAL, 2"	SQ YD	267	267
44004250	PAVED SHOULDER REMOVAL	SQ YD	14.9	14.9
44201297	DOWEL BARS 1"	EACH	36	36
48101200	AGGREGATE SHOULDERS, TYPE B	TON	24.8	24.8
48102100	AGGREGATE WEDGE SHOULDER, TYPE B	TON	5.9	5.9
48203029	HOT-MIX ASPHALT SHOULDERS, 8"	SQ YD	6.7	6.7
50300255	CONCRETE SUPERSTRUCTURE	CU YD	22	22
50800105	REINFORCEMENT BARS	POUND	6550	6550
50800515	BAR SPLICERS	EACH	70	70
64200108	SHOULDER RUMBLE STRIPS, 8 INCH	FOOT	205	205
67000400	ENGINEER'S FIELD OFFICE, TYPE A	CAL MO	3	3
67100100	MOBILIZATION	L SUM	1	1
70100405	TRAFFIC CONTROL AND PROTECTION, STANDARD 701321	EACH	1	1

CONSTR. CODE
STATE 100%
BOX CULVERT
0013
014-2005

CODE NO.	ITEM	UNIT	TOTAL QUANTITY	CONSTR. CODE
70100450	TRAFFIC CONTROL AND PROTECTION, STANDARD 701201	L SUM	1	1
70100460	TRAFFIC CONTROL AND PROTECTION, STANDARD 701306	L SUM	1	1
70103815	TRAFFIC CONTROL SURVEILLANCE	CAL DA	40	40
70106500	TEMPORARY BRIDGE TRAFFIC SIGNALS	EACH	1	1
70106700	TEMPORARY RUMBLE STRIPS	EACH	6	6
70107005	PAVEMENT MARKING BLACKOUT TAPE, 5"	FOOT	520	520
70300240	TEMPORARY PAVEMENT MARKING - LINE 6"	FOOT	272	272
70400100	TEMPORARY CONCRETE BARRIER	FOOT	272	272
70400200	RELOCATE TEMPORARY CONCRETE BARRIER	FOOT	272	272
70600250	IMPACT ATTENUATORS, TEMPORARY (NON-REDIRECTIVE), TEST LEVEL 3	EACH	1	1
70600330	IMPACT ATTENUATORS, RELOCATE (FULLY REDIRECTIVE), TEST LEVEL 3	EACH	1	1
* 78000200	THERMOPLASTIC PAVEMENT MARKING - LINE 4"	FOOT	235	235
* 78100100	RAISED REFLECTIVE PAVEMENT MARKER	EACH	3	3
* 78200010	BARRIER WALL REFLECTORS, TYPE B	EACH	7	7
78300200	RAISED REFLECTIVE PAVEMENT MARKER REMOVAL	EACH	3	3
X0324762	WIDE LOAD DETOUR SIGNING	L SUM	1	1
X7030005	TEMPORARY PAVEMENT MARKING REMOVAL	SQ FT	333	333
Z0013798	CONSTRUCTION LAYOUT	L SUM	1	1
Z0033700	LONGITUDINAL JOINT SEALANT	FOOT	102	102

* SPECIALTY ITEM

MODEL: #MODELNAME
FILE NAME: P:\11104\BID\BID\ITEG_ILI\inois.gov\PWD\DOT\Documents\DOT_Offices\District B\Projects\0876M15\CAD\Drawings\0876M15-sh-500.dgn

REV. - MS

USER NAME = bergmd	DESIGNED - _____	REVISED - _____
DRAWN - _____	REVISIONS - _____	
PLOT SCALE = 100.0000' / in.	CHECKED - _____	REVISED - _____
PLOT DATE = 2/7/2019	DATE - _____	REVISED - _____

STATE OF ILLINOIS
DEPARTMENT OF TRANSPORTATION

SUMMARY OF QUANTITIES

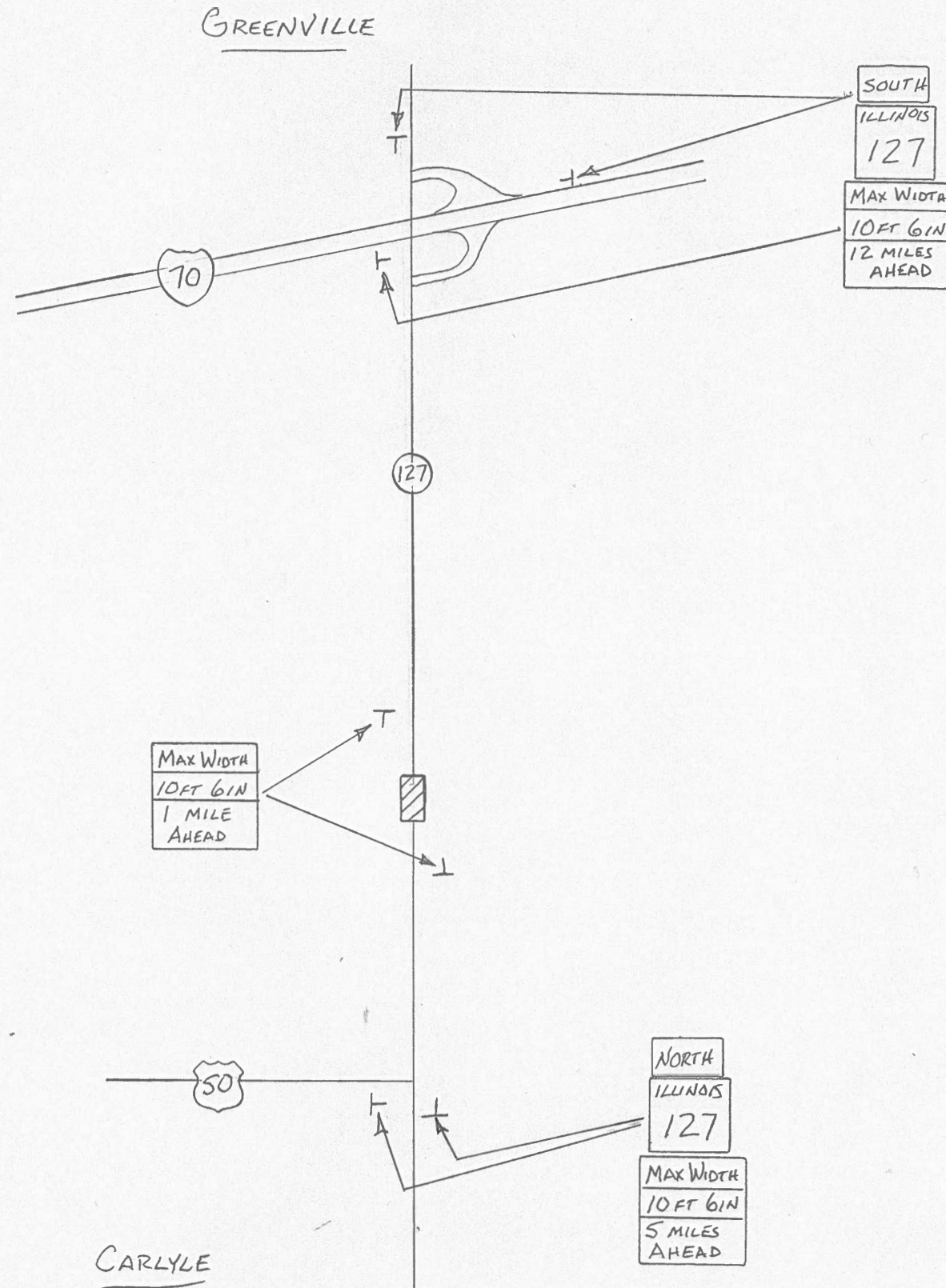
SCALE: _____ SHEET 1 OF 1 SHEETS STA. _____ TO STA. _____

F.A.P. RTE. 42	SECTION 112CLV-1	COUNTY CLINTON	TOTAL SHEETS 14	SHEET NO. 3
CONTRACT NO. 76M15			ILLINOIS FED. AID PROJECT	

IL 127 OVER TRIB. FLAT BRANCH - SN 014-2005

NOTES:

1. ALL SIGNS REQUIRED WILL BE SUPPLIED TO THE CONTRACTOR BY I.D.O.T.
2. THE CONTRACTOR SHALL FURNISH THE POSTS AND ERECT SIGNS AT THE LOCATIONS SHOWN ON THIS SHEET, AS DIRECTED BY THE R.E./R.T. THE POSTS SHALL REMAIN THE PROPERTY OF THE CONTRACTOR.
3. THE CONTRACTOR SHALL GIVE ILLINOIS DEPARTMENT OF TRANSPORTATION, BUREAU OF OPERATIONS TWO WEEKS NOTICE FOR SIGNS. THE CONTRACTOR SHALL PICK UP THE SIGNS AT THE T.M. BUILDING IN FAIRVIEW HEIGHTS, AND RETURN THEM UPON COMPLETION OF THE CONTRACT. CONTACT JEAN SLAPE, AT (618) 394-2189.
4. THE ABOVE NOTED WORK SHALL BE PAID FOR AT THE CONTRACT UNIT PRICE, LUMP SUM, FOR WIDE LOAD SIGNING AND NO OTHER COMPENSATION WILL BE ALLOWED.
5. SIGN SPACING WILL BE 400' OR TO FIT FIELD CONDITIONS.
6. THE HEIGHT TO THE BOTTOM OF THE LOWEST SIGN SHALL NOT BE LESS THAN 6'.



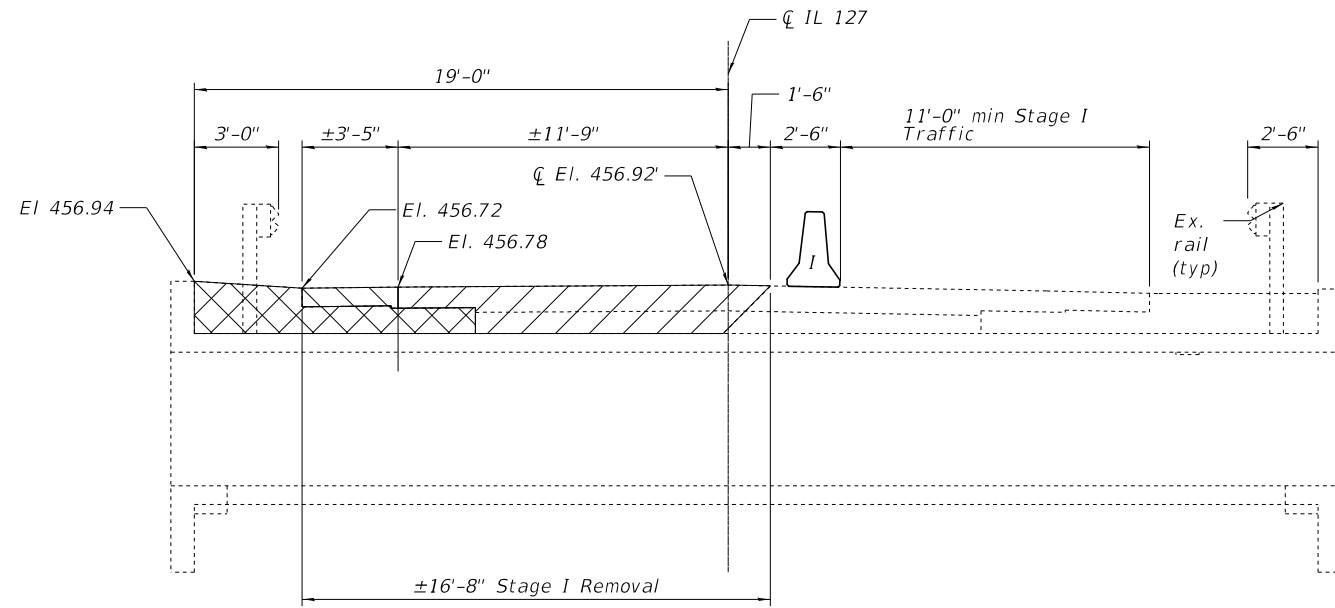
SIGNS REQUIRED

MAX WIDTH 10 FT 6 IN 1 MILE AHEAD	(2)	ILLINOIS 127	(5)
MAX WIDTH 10 FT 6 IN 5 MILES AHEAD	(2)	NORTH	(2)
MAX WIDTH 10 FT 6 IN 12 MILES AHEAD	(3)	SOUTH	(3)

NOTE: NOT TO SCALE

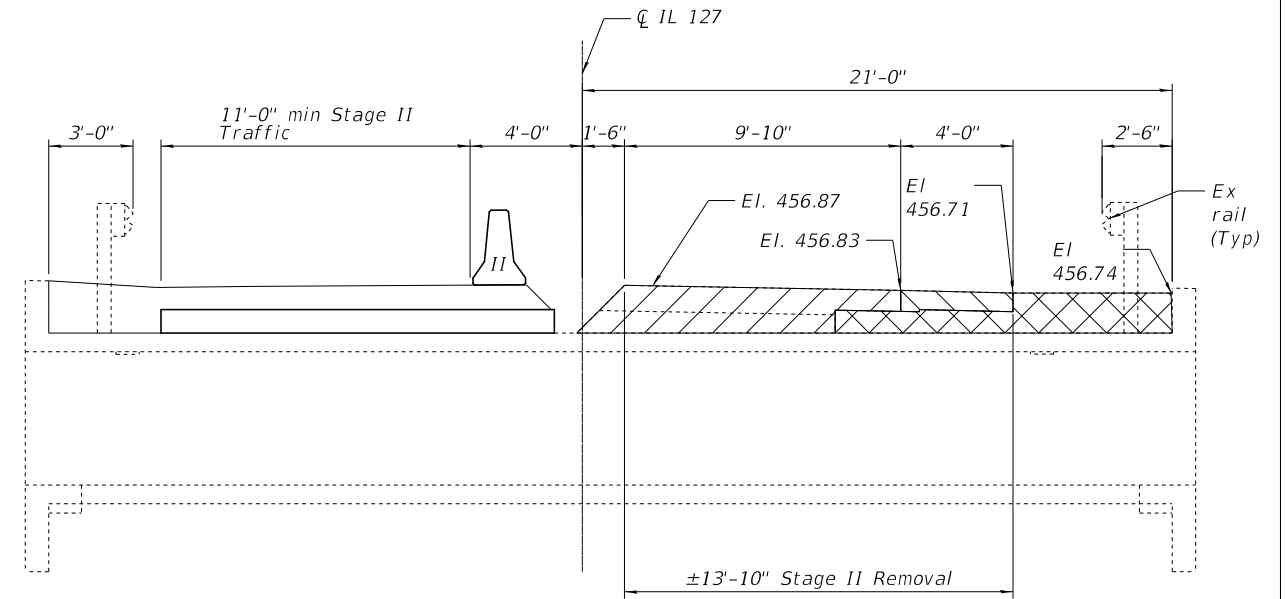
CONTRACT # 76M15

FILE NAME =	USER NAME = harbaughrd	DESIGNED -	REVISED -	STATE OF ILLINOIS DEPARTMENT OF TRANSPORTATION	WIDE LOAD SIGNING			F.A. #	SECTION	COUNTY	TOTAL SHEETS	SHEET NO.
pw:\11084610\INTEG.illinois.gov\PI007\Do	uments\DOT Offices\District 8\Projects\087	FOR CHD	REVISED -					47	112CLV-1	CLINTON	14	7
	PLT SCALE = 100.0000 ' / in.	CHECKED -	REVISED -					CONTRACT NO. 76M15				
#MODELNAME#	PLT DATE = 11-26-2018	DATE -	REVISED -					ILLINOIS FED. AID PROJECT				
				SCALE: NA	SHEET	OF	SHEETS	STA.	TO STA.			



STAGE I REMOVAL

(Looking North)



STAGE II REMOVAL

(Looking North)



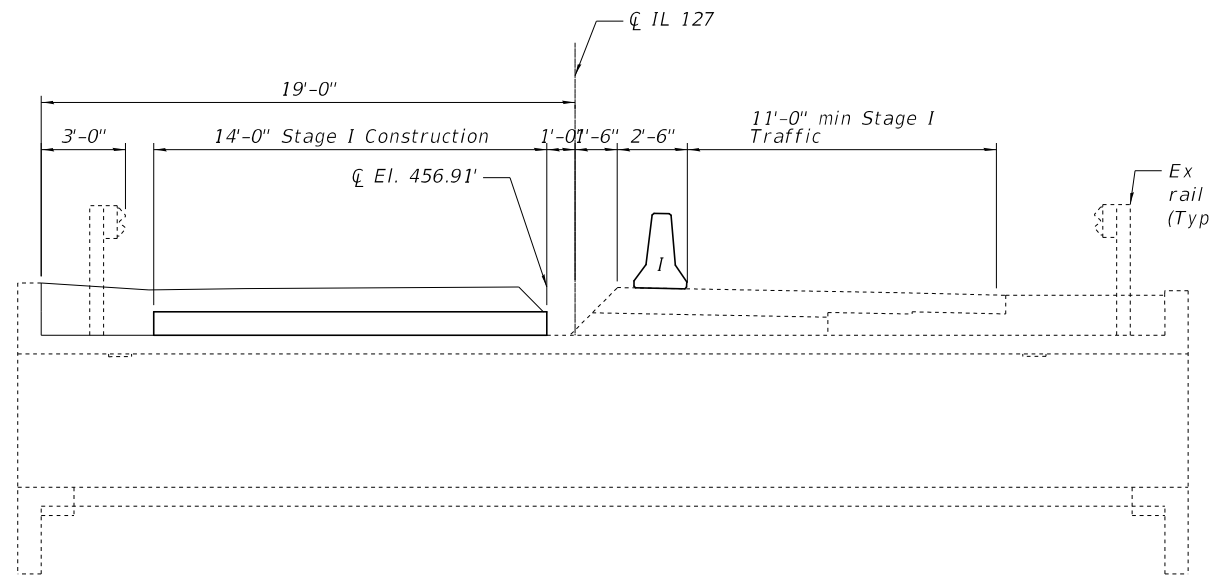
Pavement Removal



Paved Shoulder Removal

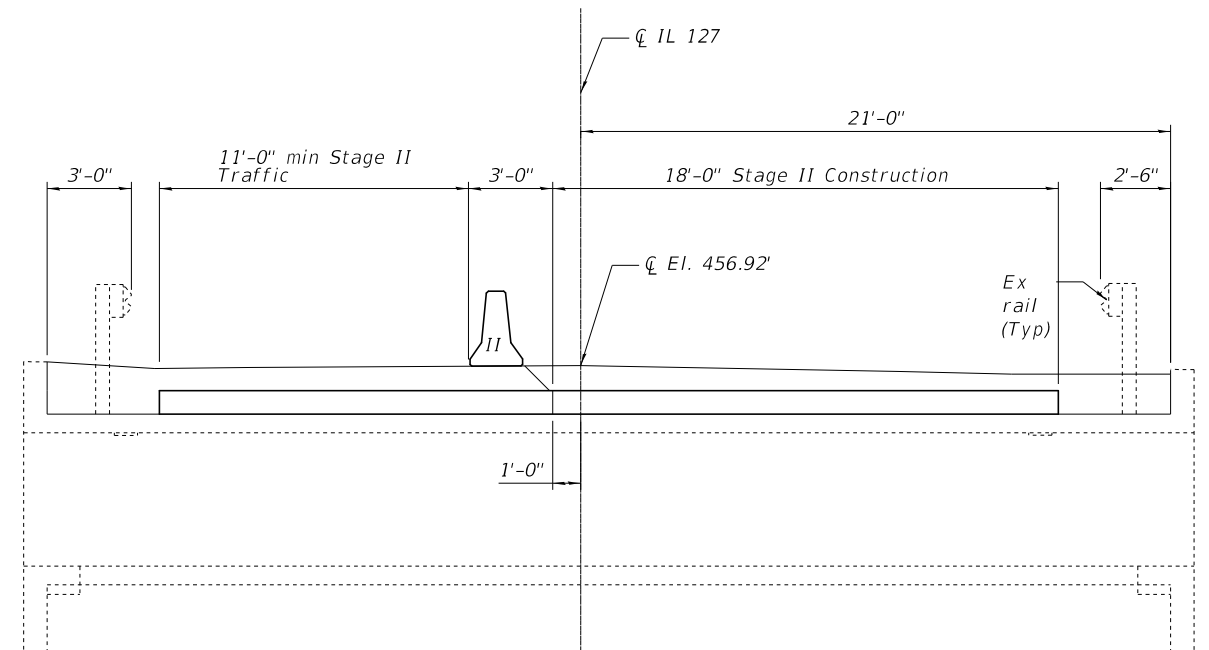


Earth Excavation



STAGE I CONSTRUCTION

(Looking North)



STAGE II CONSTRUCTION

(Looking North)

MODEL: \$MODELNAME\$
 FILE NAME: p:\v\084EBID\INTEG.jil\mde.gov\PWIDOT\Documents\DOT Offices\Detrit 8\Projects\876M15\CADData\CADsheets\876M15-sh-culvert_gpe.dgn

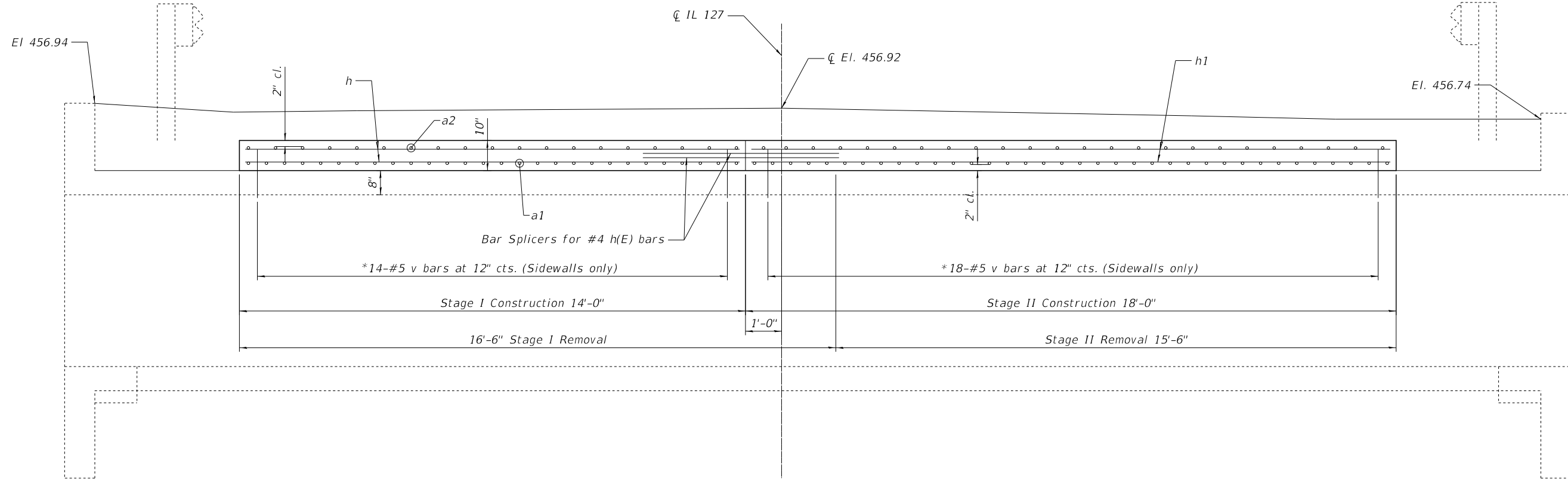
USER NAME =	DESIGNED - AYV	REVISED -
CHECKED - JSB	REVISED -	
PLOT SCALE =	DRAWN - AYV	REVISED -
PLOT DATE =	CHECKED - JSB	REVISED -

**STATE OF ILLINOIS
 DEPARTMENT OF TRANSPORTATION**

**STAGING
 SN 014-2005**

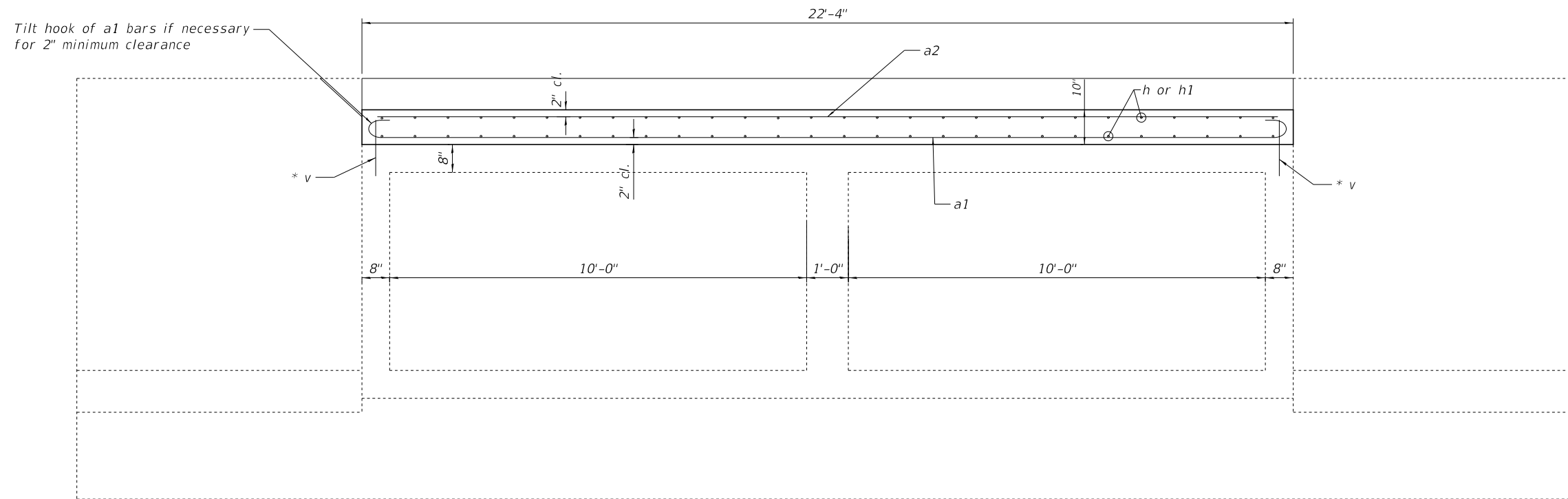
SHEET 2 OF 7 SHEETS

F.A.P. RTE.	SECTION	COUNTY	TOTAL SHEETS	SHEET NO.
42	112CLV-1	CLINTON	14	9
CONTRACT NO. 76M15				
ILLINOIS FED. AID PROJECT				



ELEVATION

(Looking North)



* Epoxy grout v bars in 9" min. holes according to Article 584 of the Standard Specifications.

PROPOSED CROSS SECTION

MODEL: \$MODELNAME\$
 FILE NAME: p:\v\084EBID\INTEG\ilmodf.gov\PW\DOT\Documents\DOT Offices\District 8\Projects\876M15\CADData\CADsheets\876M15-sh-culvert_gpe.dgn

USER NAME =	DESIGNED - AYV	REVISED -
CHECKED - JSB	CHECKED - JSB	REVISED -
PLOT SCALE =	DRAWN - AYV	REVISED -
PLOT DATE =	CHECKED - JSB	REVISED -

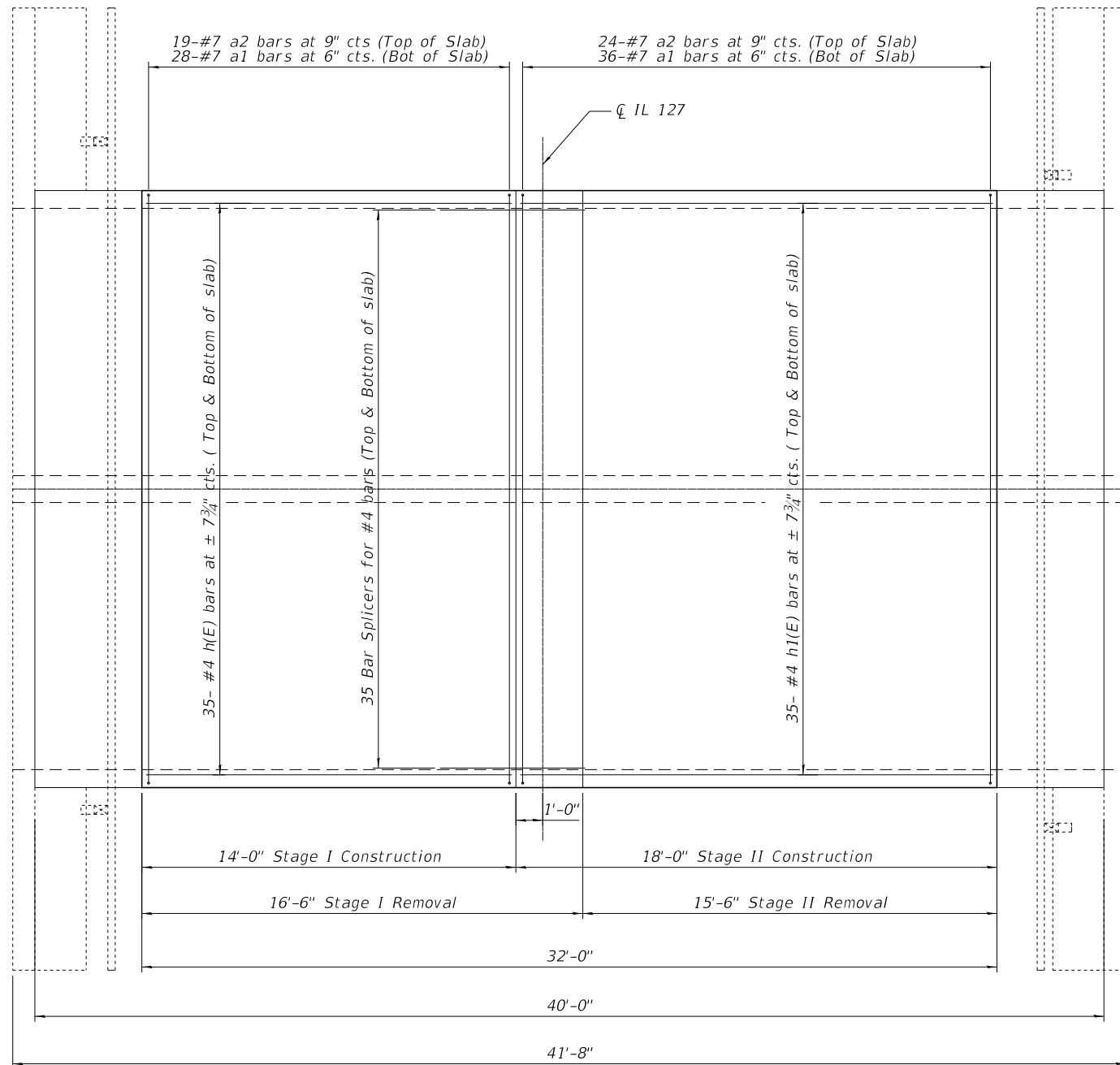
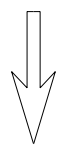
**STATE OF ILLINOIS
 DEPARTMENT OF TRANSPORTATION**

**CROSS SECTION
 SN 014-2005**

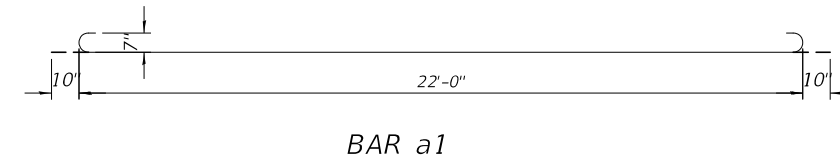
SHEET 3 OF 7 SHEETS

F.A.P. RTE.	SECTION	COUNTY	TOTAL SHEETS	SHEET NO.
42	112CLV-1	CLINTON	14	10
CONTRACT NO. 76M15				

ILLINOIS FED. AID PROJECT



Flow
←



BILL OF MATERIAL

Bar	No.	Size	Length	Shape
a1	64	#7	23'-8"	⌒
a2	43	#7	21'-7"	—
h	70	#4	13'-8"	—
h1	70	#4	17'-8"	—
v	64	#5	1'-4"	—
Concrete Superstructure			Cu. Yd.	22.1
Reinforcement Bars			Lbs.	6550
Bar Splicers			Each	70

MODEL: \$MODELNAME\$
FILE NAME: p:\w\11084EBID\INTEG\illinois.gov\PWIDOT\Documents\DOT Offices\District 8\Projects\876M15\CADData\CADsheets\876M15-sh-culvert_gpe.dgn

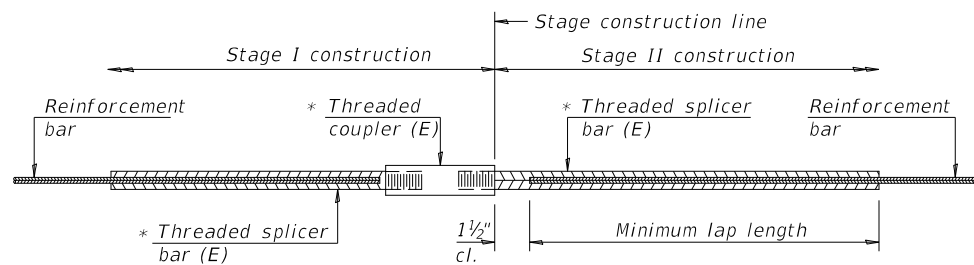
USER NAME =	DESIGNED - AYV	REVISED -
CHECKED - JSB	REVISOR -	
PLOT SCALE =	DRAWN - AYV	REVISED -
PLOT DATE =	CHECKED - JSB	REVISED -

**STATE OF ILLINOIS
DEPARTMENT OF TRANSPORTATION**

**PLAN
SN 014-2005**

SHEET 4 OF 7 SHEETS

F.A.P. RTE.	SECTION	COUNTY	TOTAL SHEETS	SHEET NO.
42	112CLV-1	CLINTON	14	11
CONTRACT NO. 76M15				
ILLINOIS FED. AID PROJECT				

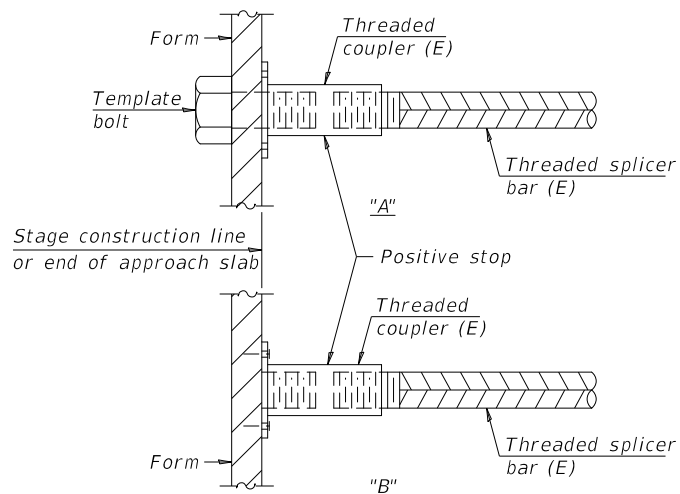


STANDARD BAR SPLICER ASSEMBLY

Threaded splicer bar length = min. lap length + 1 1/2" + thread length

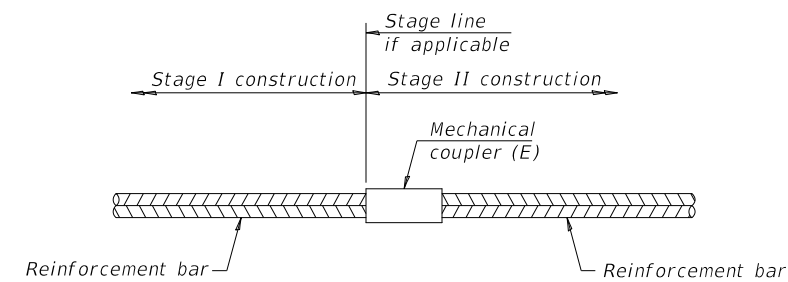
* Epoxy not required on Bar Splicer Assembly components used in conjunction with black bars.

Location	Bar size	No. assemblies required	Minimum lap length
T & B Slab	#4	70	2'-5"



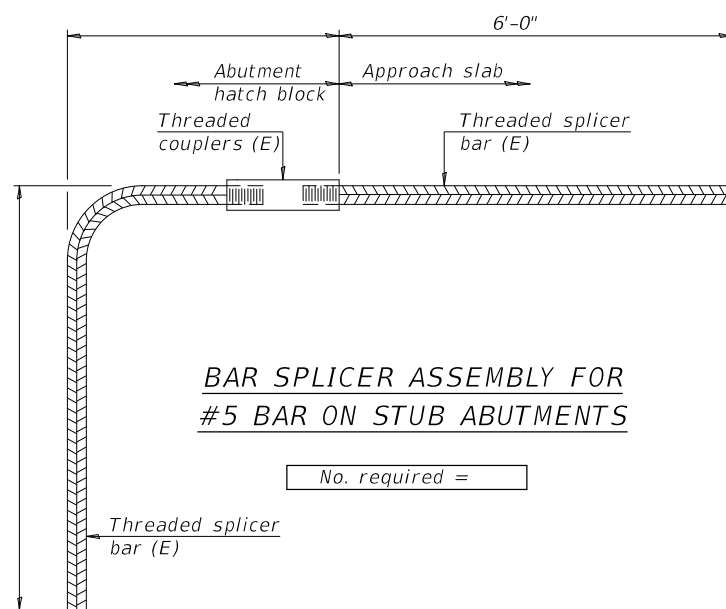
INSTALLATION AND SETTING METHODS

"A" : Set bar splicer assembly by means of a template bolt.
 "B" : Set bar splicer assembly by nailing to wood forms or cementing to steel forms.
 (E) : Indicates epoxy coating.



STANDARD MECHANICAL SPLICER

Location	Bar size	No. assemblies required



BAR SPLICER ASSEMBLY FOR #5 BAR ON STUB ABUTMENTS

No. required =

NOTES

Splicer bars shall be deformed with threaded ends and have a minimum 60 ksi yield strength.
 All reinforcement shall be lapped and tied to the splicer bars.
 Bar splicer assemblies shall be epoxy coated according to the requirements for reinforcement bars. See Section 508 of the Standard Specifications.
 See approved list of bar splicer assemblies and mechanical splicers for alternatives.

MODEL: \$MODELNAMES
 FILE NAME: p:\w\11084848\INTEG.jil\mof.gov\PW\DOT\Documents\DOT Offices\District 8\Projects\876M15\CADData\CADsheets\876M15-sh-culvert.gpe.dgn

BSD-1

2-17-2017

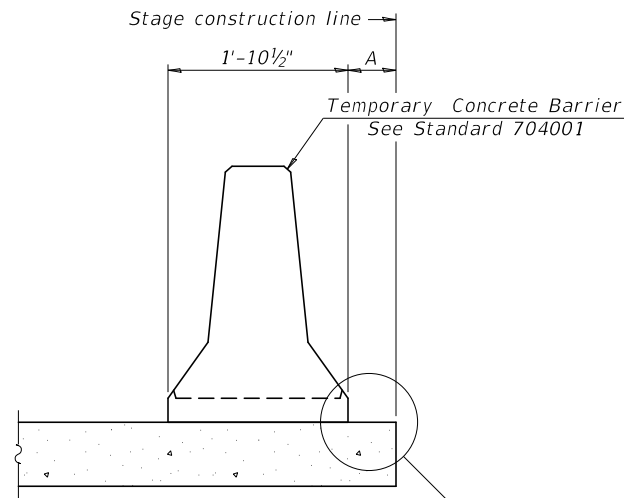
USER NAME =	DESIGNED - AYV	REVISED -
CHECKED - JSB	REVISED -	
PLOT SCALE =	DRAWN - AYV	REVISED -
PLOT DATE =	CHECKED - JSB	REVISED -

STATE OF ILLINOIS
 DEPARTMENT OF TRANSPORTATION

BAR SPLICER ASSEMBLY AND MECHANICAL SPLICER DETAILS
 STRUCTURE NO. 014-2005

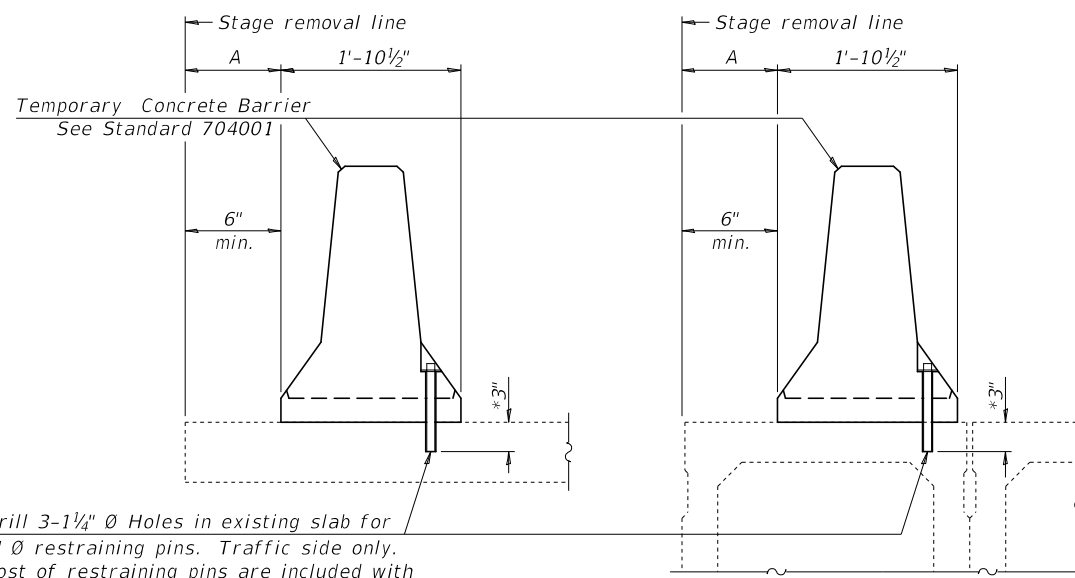
SHEET 5 OF 7 SHEETS

F.A.P. RTE.	SECTION	COUNTY	TOTAL SHEETS	SHEET NO.
42	112CLV-1	CLINTON	14	12
CONTRACT NO. 76M15				
ILLINOIS FED. AID PROJECT				



When "A" is 3'-1" or less, the temporary concrete barrier shall be restrained to the new slab according to Detail I, II or III. No restraint is required when "A" is greater than 3'-1".

NEW SLAB OR NEW DECK BEAM



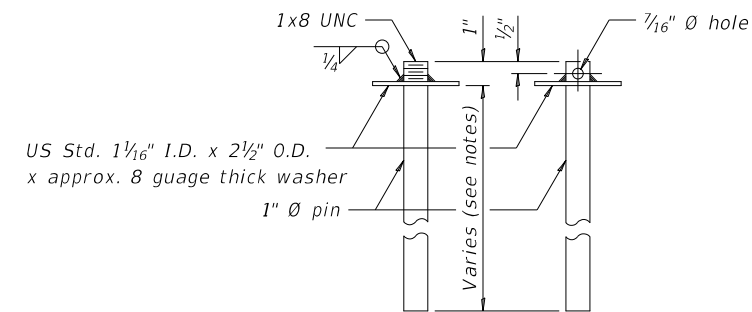
Drill 3-1/4" Ø Holes in existing slab for 1" Ø restraining pins. Traffic side only. Cost of restraining pins are included with Temporary Concrete Barrier. No restraint is required when "A" is greater than 3'-1".

EXISTING SLAB

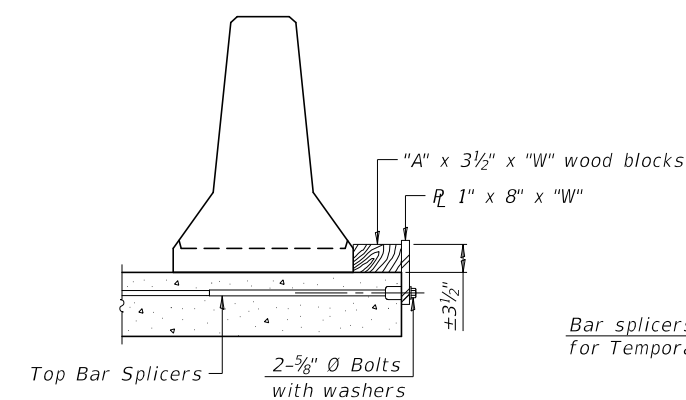
* When hot-mix asphalt wearing surface is present, embedment shall be 3" plus the wearing surface depth.

EXISTING DECK BEAM

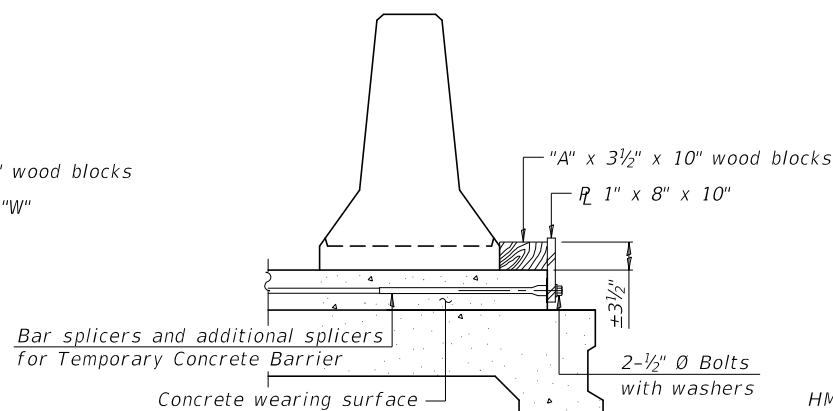
SECTIONS THRU SLAB OR DECK BEAM



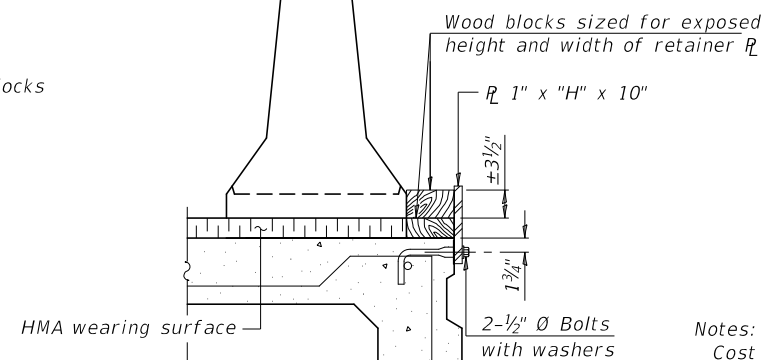
RESTRAINING PIN



DETAIL I

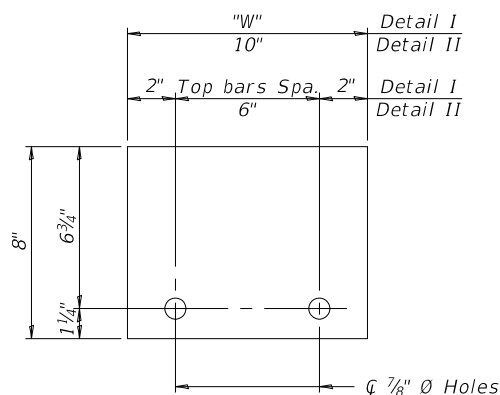


DETAIL II

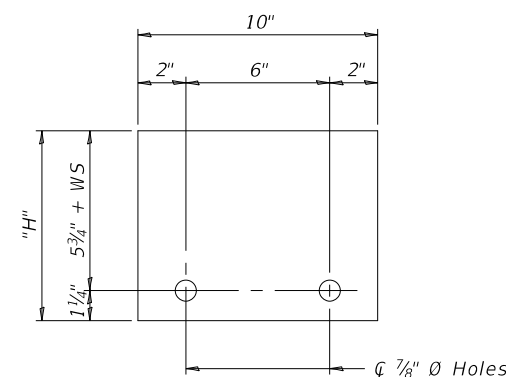


DETAIL III

BAR SPLICER FOR #4 BAR - DETAIL III



STEEL RETAINER R 1" x 8" x "W"
(Detail I and II)



STEEL RETAINER R 1" x "H" x 10"
(Detail III)

Notes:

Cost of retainer assembly is included with Temporary Concrete Barrier. A retainer assembly shall be located at the approximate center of each temporary concrete barrier.

The retainer plate shall not be removed until the concrete on the adjacent stage is ready to be poured. For Detail III applications the retainer plate shall not be removed until just prior to placing the adjacent beam.

When the 'A' dimension is less than 1 1/2', the wood block shall be omitted and the barrier shall be placed in direct contact with the steel retainer plate. For deck beam applications the minimum required 'A' distance is 6' to accommodate the shear key clamping device.

Detail I - Installation for a new bridge deck or bridge slab.

Detail II - Installation for a new deck beam with an initial concrete wearing surface. Additional bar splicers shall be provided at 6'-0" centers and paired with the bar splicers of the concrete wearing surface reinforcement to accommodate the installation of the retainer assemblies. The cost of the additional bar splicers is included with the concrete wearing surface.

Detail III - Installation for a new deck beam with no initial wearing surface or with an initial hot-mix asphalt (HMA) wearing surface present. The deck beam directly beneath the temporary concrete barrier shall be fabricated with bar splicer inserts in the side of the beam, as detailed, to accommodate the installation of the retainer assemblies. A pair of bar splicers, 6" apart, shall be placed at 6'-0" centers along the length of the beam. The cost of the bar splicers is included with the deck beam.

R-27

8-11-2017

USER NAME =	DESIGNED - AYW	REVISED -
CHECKED - JSB	REVISED -	
PLOT SCALE =	DRAWN - AYW	REVISED -
PLOT DATE =	CHECKED - JSB	REVISED -

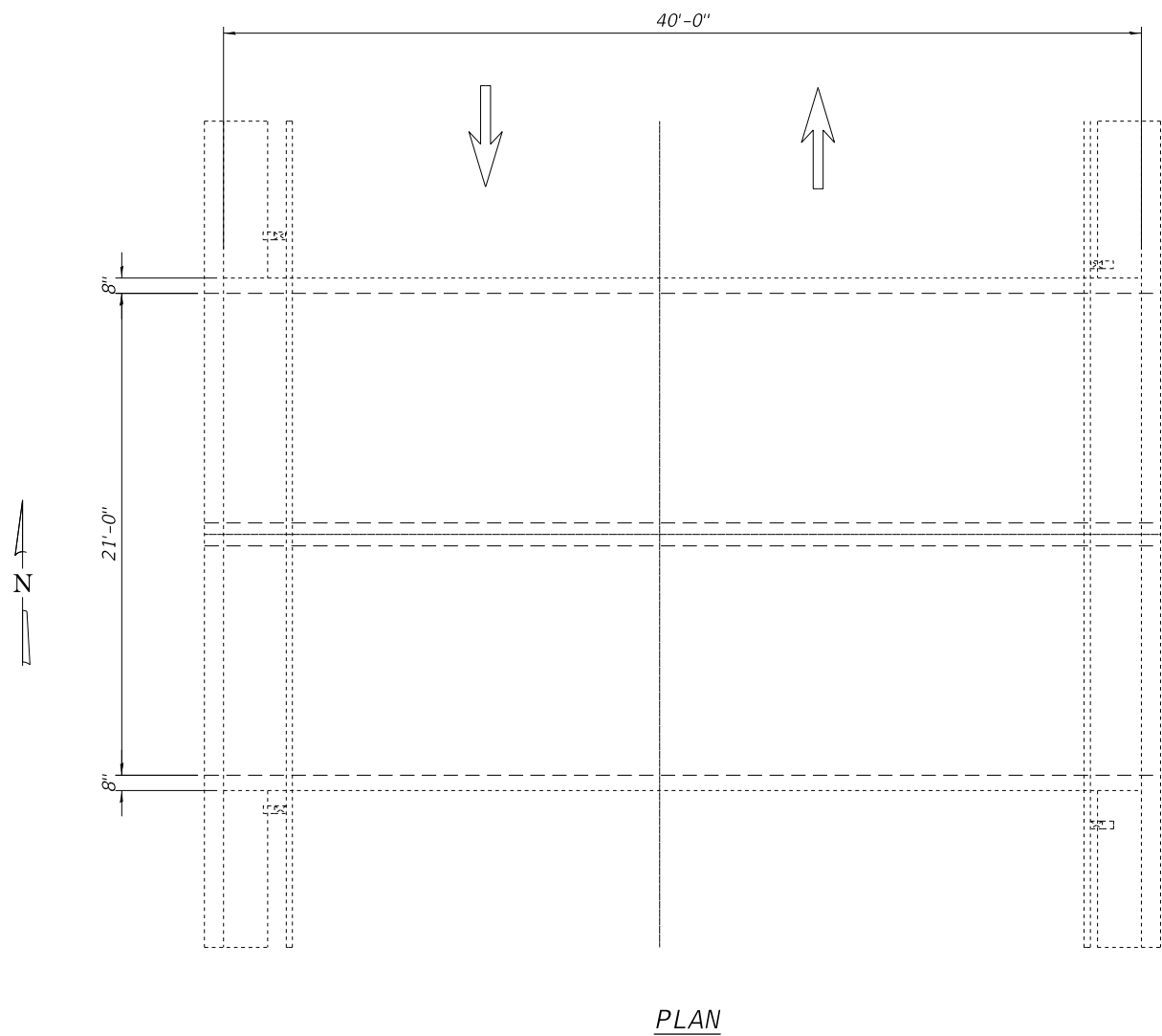
STATE OF ILLINOIS
DEPARTMENT OF TRANSPORTATION

TEMPORARY CONCRETE BARRIER FOR STAGE CONSTRUCTION
STRUCTURE NO. 014-2005

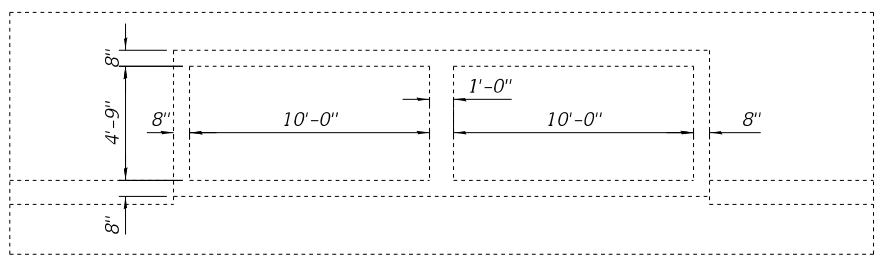
SHEET 6 OF 7 SHEETS

F.A.P. RTE.	SECTION	COUNTY	TOTAL SHEETS	SHEET NO.
42	112CLV-1	CLINTON	14	13
CONTRACT NO. 76M15				
ILLINOIS FED. AID PROJECT				

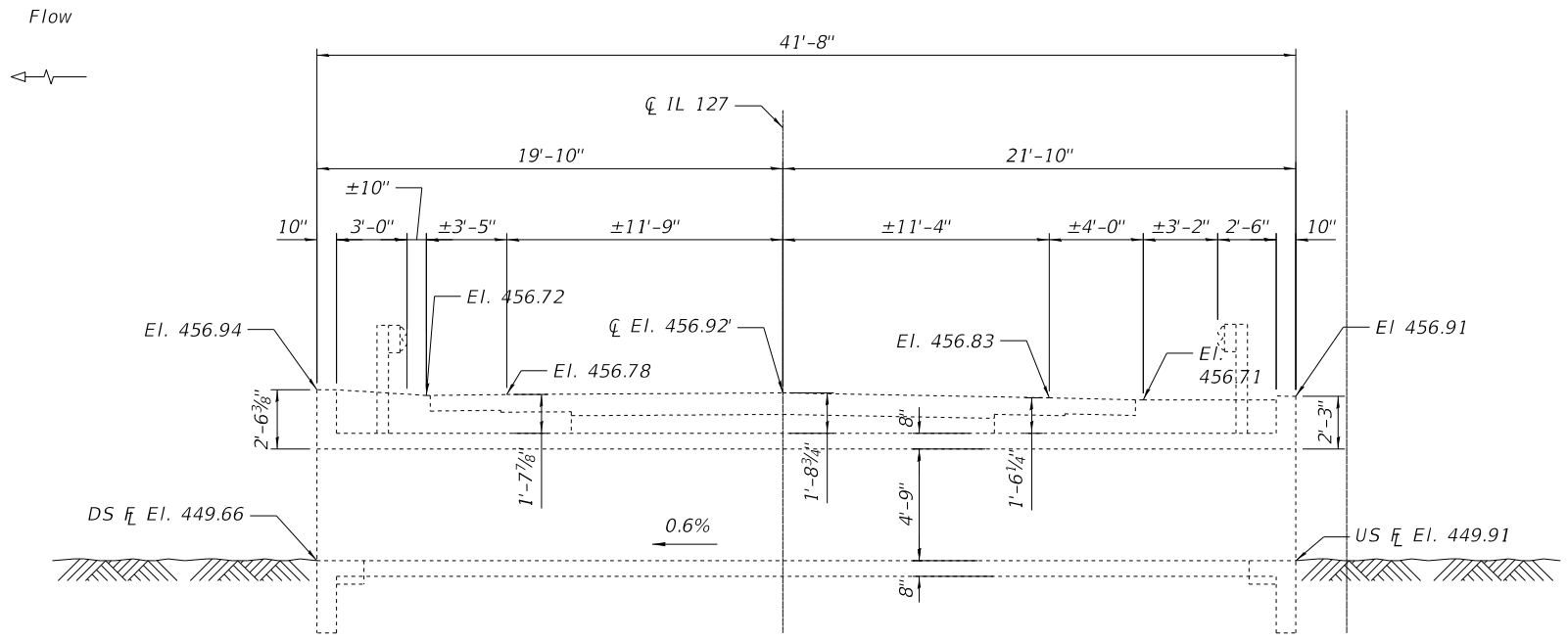
MODEL: \$MODELNAMES
 FILE NAME: pw:\VIL084EBID\INTEG.jil\mde.gov\PW\DOT\Documents\DOT Offices\District 8\Projects\D876M15\CADData\CADsheets\D876M15-sh-culvert.gpe.dgn



PLAN



BOX CULVERT CROSS SECTION



ELEVATION

(Looking North)

USER NAME =	DESIGNED - AYV	REVISED -
CHECKED - JSB	REVISED -	
PLOT SCALE =	DRAWN - AYV	REVISED -
PLOT DATE =	CHECKED - JSB	REVISED -

STATE OF ILLINOIS
 DEPARTMENT OF TRANSPORTATION

EXISTING
 SN 014-2005

SHEET 7 OF 7 SHEETS

F.A.P. RTE.	SECTION	COUNTY	TOTAL SHEETS	SHEET NO.
42	112CLV-1	CLINTON	14	14
CONTRACT NO. 76M15				
ILLINOIS FED. AID PROJECT				