

No Existing Bridge
 B.M. N 1/2" Road 30'
 21m + 200 Rt. 36a
 777-70 - El. 443.75

STATE OF ILLINOIS
 DEPARTMENT OF PUBLIC WORKS & BUILDINGS
 DIVISION OF HIGHWAYS

BILL OF MATERIAL
 SUPERSTRUCTURE

BAR	NO	SIZE	LENGTH	SHAPE
a	40	5/8"	33'-0"	
o	82	5/8"	29'-9"	
b	160	1/2"	22'-8"	
u	44	1/2"	3'-9"	
x	108	1/2"	4'-0"	

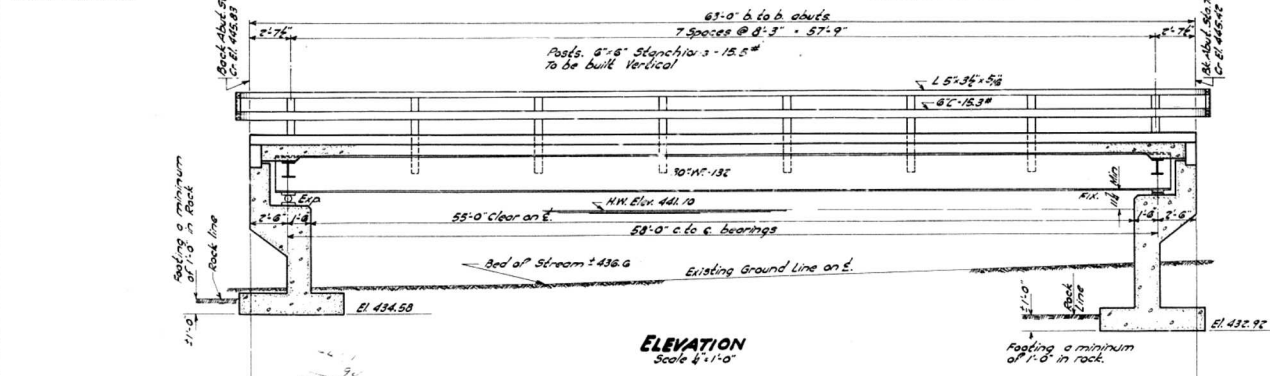
Class X Concrete	Cu. Yds.	49.2
Reinforcement Bars	Lbs.	8030
Structural Steel	Lbs.	57420
Name Plate	Ea.	one

GENERAL NOTES

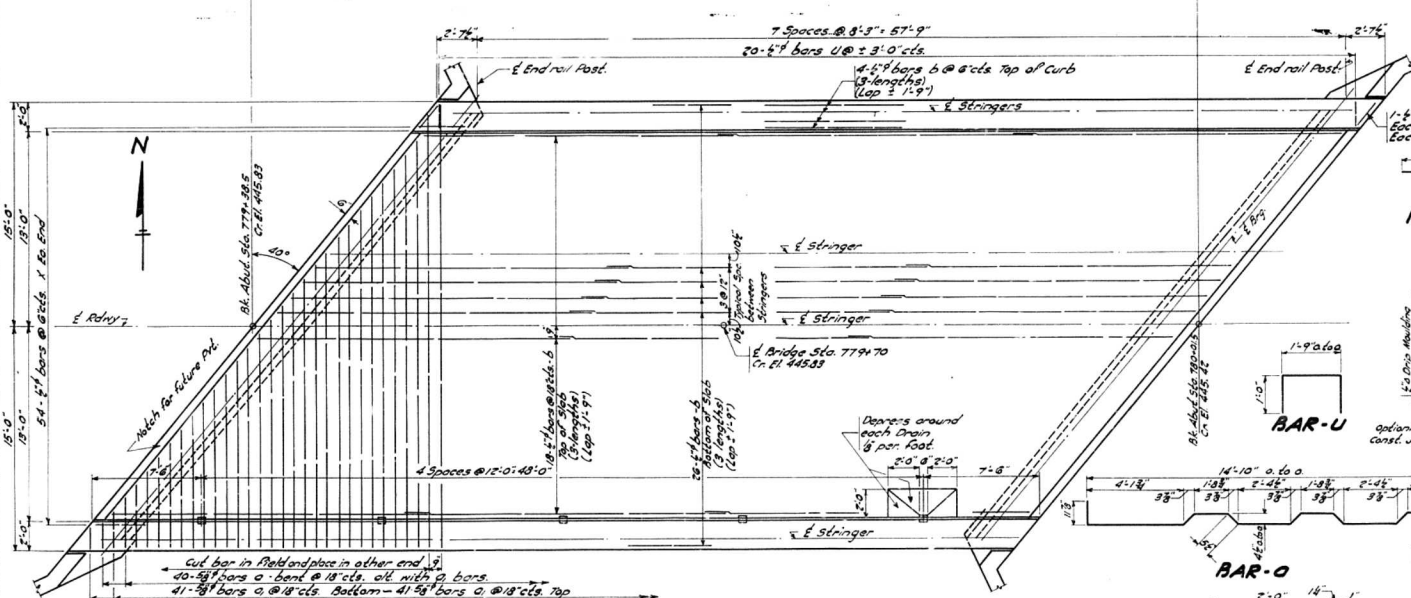
Class X concrete shall be used thru-out Concrete floor slab shall be finished in accordance with Art. 8.3(a) of Standard Specifications.
 Drills & holes 1/8" unless noted.
 Rail posts shall be built vertical. Railing shall be adjusted to true alignment after roadway, slab and curbs are poured.
 Provide one lock washer on all bolts connecting rail to posts. Provide one 1/2" and one 1/4" shim for rail connections to 20% of posts.
 Inspection of Structural Steel by Illinois Division of Highways before painting.
 All structural steel shall receive one shop coat of red lead and two field coats of aluminum paint. Paint to be furnished by the contractor.
 Ribbed light galv. or finished bolts may be substituted for hot rivets. See Special Provisions.
 All girders, bearings, ties, load ties and anchor bolts shall be finished painted and set in accordance with Art. 54.3(d) and Art. 55.10(a) of the Std. Specs. and are included for payment as structural steel.

WATERWAY INFORMATION

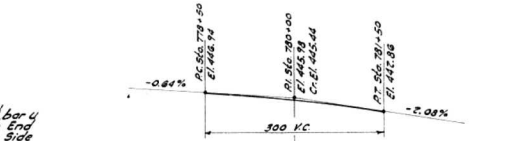
Drainage Area ----- 1400 Acres
 Character ----- Hilly & wooded
 Assumed C (Rainfall) ----- .88
 Opening Reg'd by Formula ----- .95 ft
 Proposed Opening ----- 190 ft



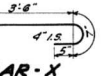
ELEVATION
 Scale 1/4" = 1'-0"



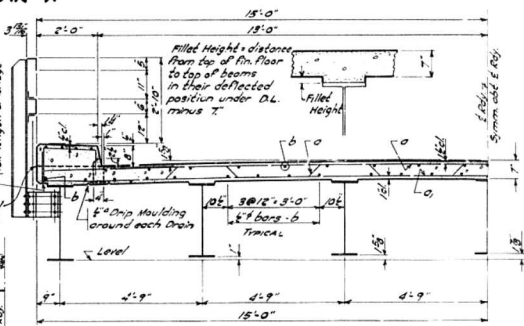
PLAN
 Scale 3/8" = 1'-0"



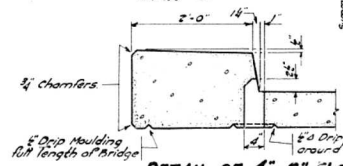
GRADE LINE



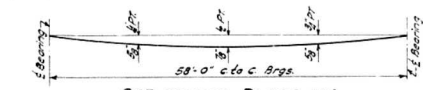
BAR-X



HALF CROSS SECTION
 SHOWING CURB NORMAL TO E. RAILWAY
 Scale 1/4" = 1'-0"



DETAIL OF 4"x6" FLOOR DRAIN



DEFLECTION DIAGRAM

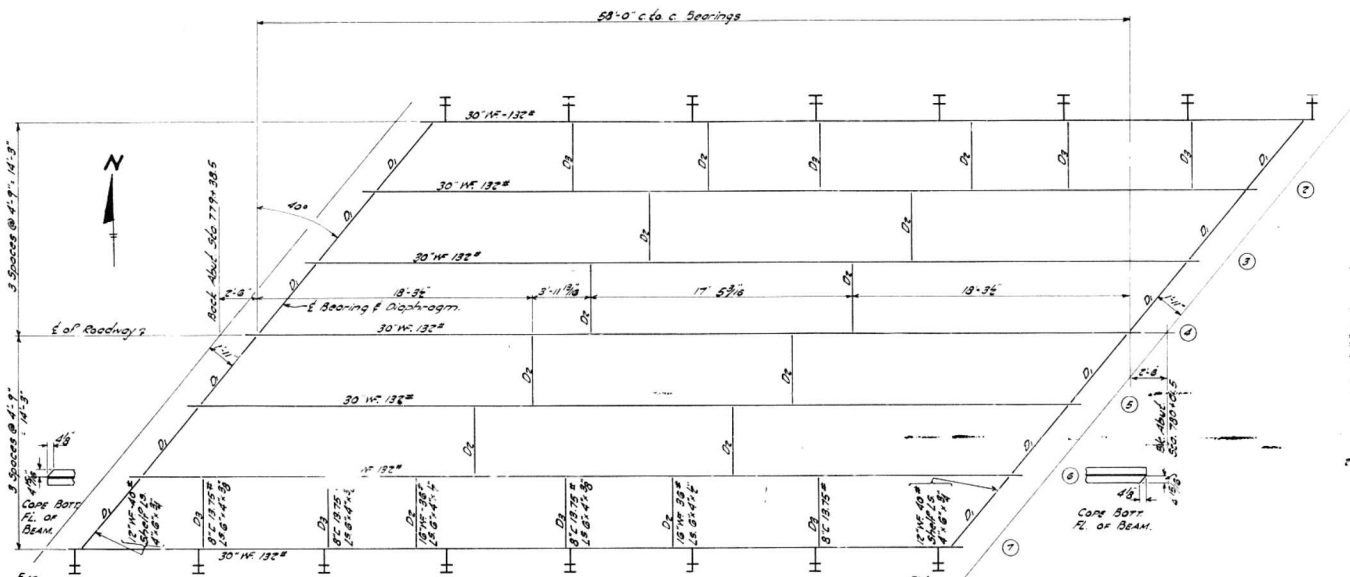
- STRESSES
 1 1/2 - 18000% Strud Steel
 1 3/4 - 20000% Rein'd Bars
 1 C - 12000% Super
 1 C - 800% Substn
 1 - 10

PROJECT F-399(17)
 CREEK IN KAMPSVILLE
 CAL. ROUTE 158 SEC. G-G
 CALHOUN CO.
 STA 779+70

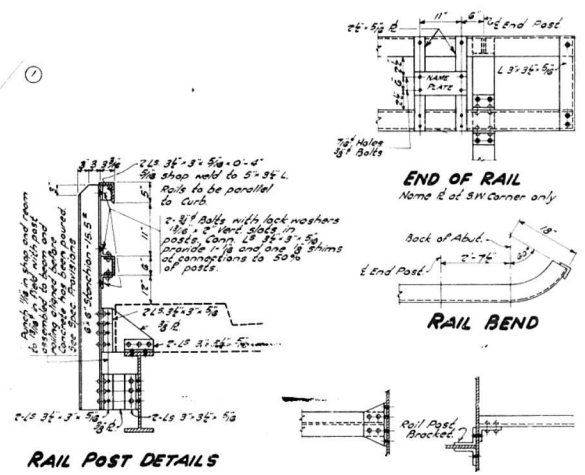
COMPUTED	<i>W. W. Volk</i>	EXAMINED	11-5-1947
CHECKED	<i>W. W. Volk</i>	DESIGNED	<i>W. W. Volk</i>
DRAWN	<i>W. W. Volk</i>	PASSED	<i>W. W. Volk</i>
CHECKED	<i>W. W. Volk</i>	APPROVED	<i>W. W. Volk</i>
ASSEMBLED			
CHECKED			

STATE OF ILLINOIS
DEPARTMENT OF PUBLIC WORKS & BUILDINGS
DIVISION OF HIGHWAYS

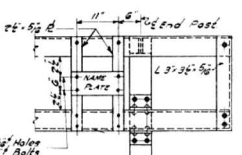
PROJECT NO.	SECTION	COUNTY	TOTAL SHEETS	SHEET	SHEETS
FA Rte 158	6-G	Calhoun	59	2 of 4	2
FED. ROAD DIST. NO.	ILLINOIS	FED. AID PROJECT	F-399 (17)		



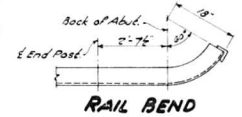
FRAMING PLAN



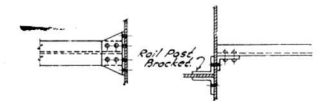
RAIL POST DETAILS



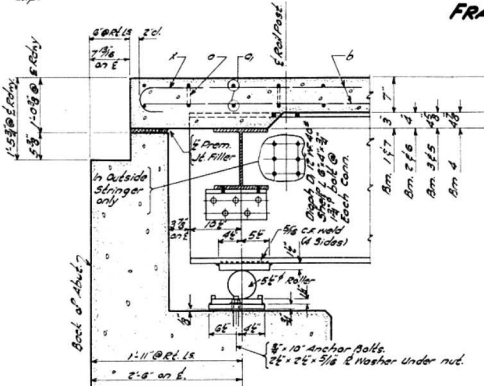
END OF RAIL



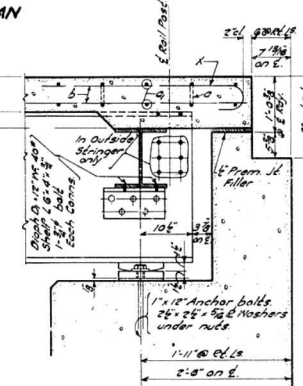
RAIL BEND



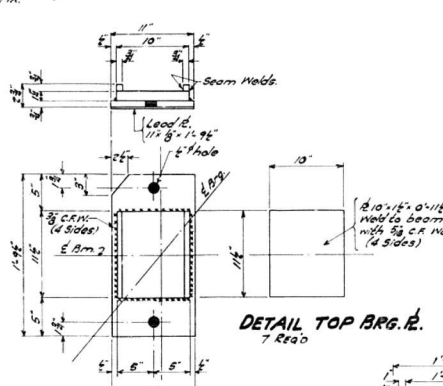
DIAPHRAGM DETAILS



DETAIL WEST END



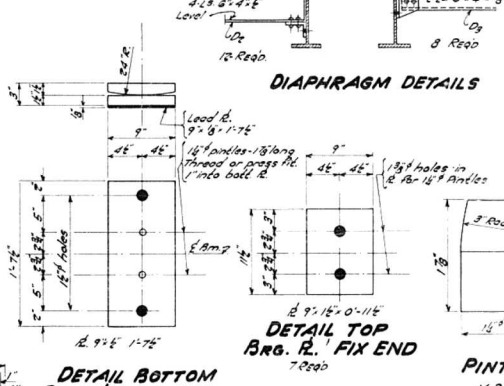
DETAIL EAST END



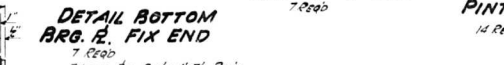
DETAIL TOP ARG. R.



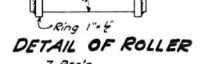
DETAIL BOTTOM ARG. R.



DETAIL TOP ARG. R. FIX END



DETAIL BOTTOM ARG. R. FIX END



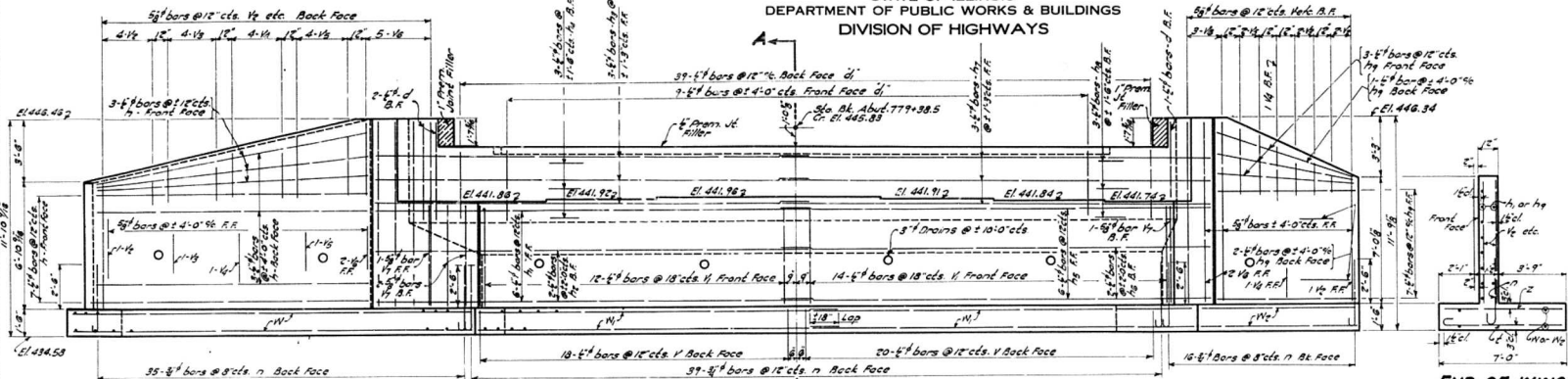
DETAIL OF ROLLER

COMPUTED	EXAMINED
CHECKED	DRAWN
CHECKED	CHECKED
CHECKED	ASSEMBLED
CHECKED	CHECKED

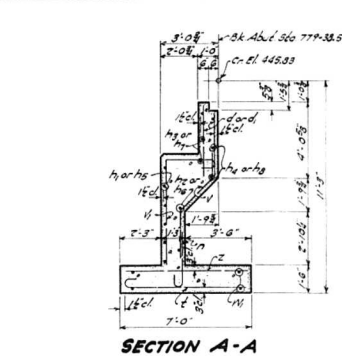
PROJECT F-399(17)
CREEK IN KAMPSVILLE
E.A. ROUTE 158 - SEC. 6-G
CALHOUN CO.
STA. 779+70

STATE OF ILLINOIS
DEPARTMENT OF PUBLIC WORKS & BUILDINGS
DIVISION OF HIGHWAYS

PROJECT NO. 100-110
SECTION 6-G
COUNT 59
SHEET NO. 3
4 SHEETS

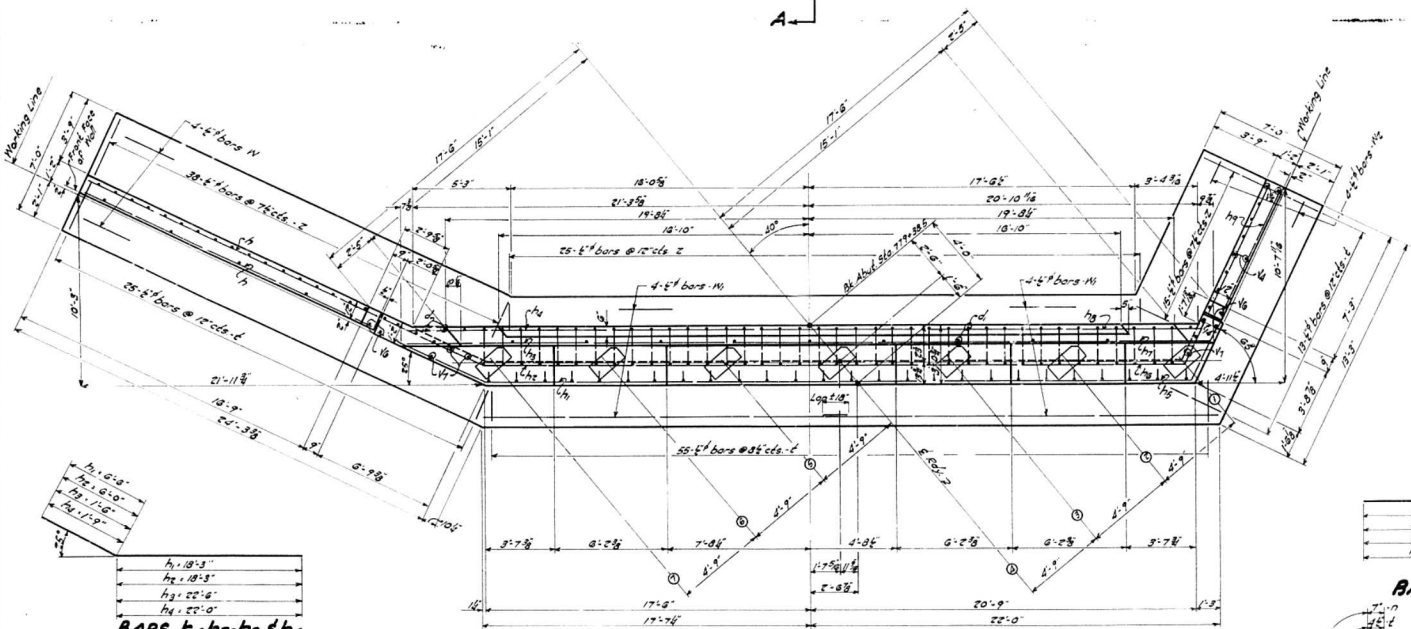


ELEVATION - WEST ABUTMENT
SCALE 3/8" = 1'-0"

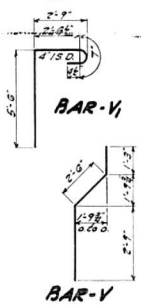


END OF WING

SECTION A-A



PLAN - WEST ABUTMENT
SCALE 3/8" = 1'-0"



BAR-V

BAR-V

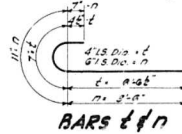
WEST ABUTMENT
BILL OF MATERIAL

BAR	NO	SIZE	LENGTH	SHAPE
d	3	E	5'-3"	
d	48	E	3'-3"	
h	13	E	17'-3"	
h	6	E	24'-3"	
h ₂	2	E	24'-3"	
h ₃	3	E	24'-0"	
h ₄	3	E	23'-9"	
h ₅	6	E	25'-0"	
h ₆	2	E	23'-9"	
h ₇	3	E	23'-9"	
h ₈	3	E	22'-0"	
h ₉	13	E	7'-9"	
n	90	E	5'-0"	
z	93	E	7'-8"	
v	39	E	2'-8"	
v	28	E	9'-0"	
v ₂	8	E	0'-9"	
v ₃	7	E	7'-9"	
v ₄	7	E	8'-6"	
v ₅	7	E	9'-3"	
v ₆	12	E	10'-0"	
v ₇	4	E	5'-6"	
w	4	E	25'-0"	
w	8	E	20'-0"	
w ₂	4	E	13'-0"	
z	79	E	0'-9"	

Class V Concrete C-106 878
Reinforcement Bars 268 5200
Rock Excavation for Structure C-106 342

h₁ 21'-8"
h₂ 21'-0"
h₃ 22'-8"
h₄ 21'-9"

BARS h₅-h₆-h₇-h₈



BARS t & n

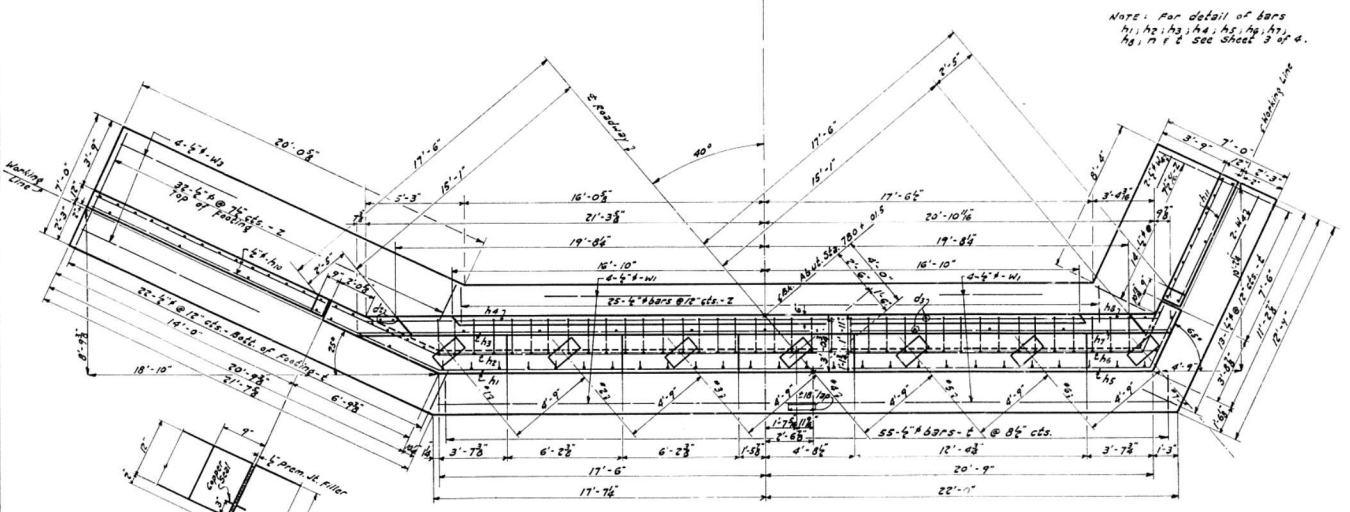
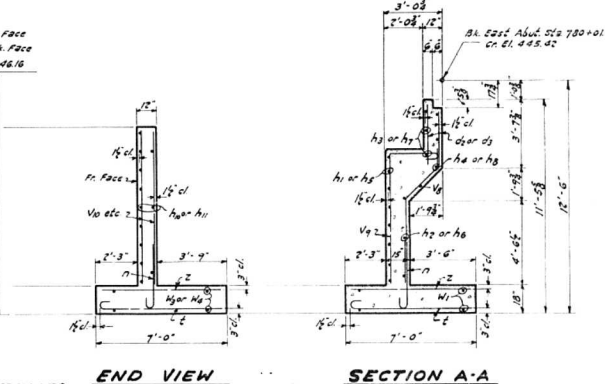
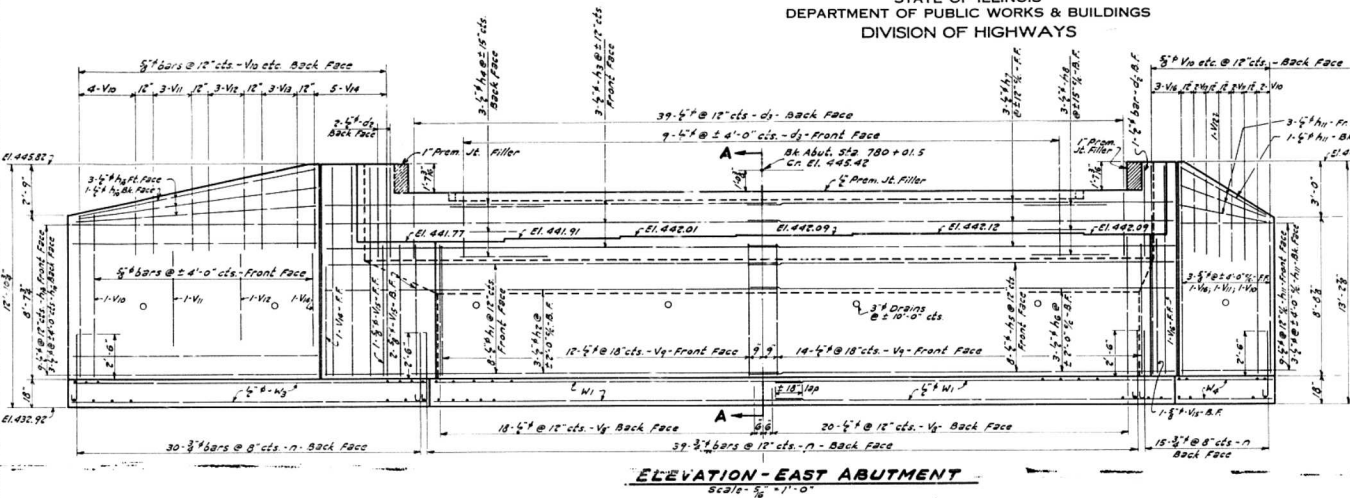
PROJ. F-399(17)
F.A. RT 158 - SEC. G-G
CALHOUN CO.
STA. 779+70

h₁ 19'-3"
h₂ 18'-3"
h₃ 22'-8"
h₄ 22'-0"

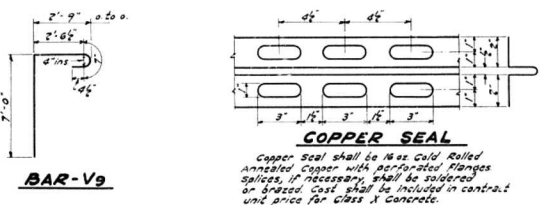
BARS h₁-h₂-h₃ & h₄

COMPUTED
CHECKED
DRAWN
CHECKED
ASSEMBLED
CHECKED

EXAMINED
PASSED
APPROVED



Note: For detail of bars
h1, h2, h3, h4, h5, h6, h7,
h8, n, f see sheet 3 of 4.



BILL OF MATERIAL - EAST ABUTMENT

Bar	No.	Size	Length	Shape	Bar	No.	Size	Length	Shape
d6	3	1/2"	4'-9"		h9	38	1/2"	8'-3"	
d9	48	2'-9"			h9	26	1/2"	10'-6"	
h1	8	"	24'-9"		h10	8	3/4"	8'-6"	
h2	3	"	24'-3"		h11	7	"	9'-3"	
h3	3	"	24'-0"		h12	5	"	10'-0"	
h4	3	"	23'-9"		h13	5	"	10'-9"	
h5	8	"	25'-0"		h14	7	"	11'-0"	
h6	3	"	23'-9"		h15	4	"	7'-0"	
h7	3	"	23'-9"		h16	5	3/4"	11'-3"	
h8	3	"	22'-6"		h17	8	1/2"	20'-6"	
h9	3	"	13'-9"		h18	4	"	21'-3"	
h10	16	1/2"	7'-3"		h19	4	"	12'-6"	
h11	16	1/2"	7'-0"		h20	71	1/2"	6'-9"	
n	84	3/4"	5'-0"						
f	90	1/2"	7'-0"						

Class X Concrete	Cu. Yds.	60.8
Reinforcement Bars	Lbs.	3280
Rock Excavation for Structures	Cu. Yds.	44.4

COMPUTED
CHECKED
DRAWN
CHECKED
ASSEMBLED
CHECKED

EXAMINED
PASSED
APPROVED

