

COUNTY	ROUTE	SECTION	SHT. NO.
ADAMS	FAS 593	16-00052-02-FP	1
COVER SHEET			
TOTAL NO. SHEETS - 18			

INDEX OF SHEETS

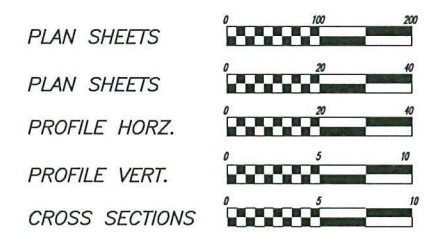
04-26-2019 LETTING ITEM 120

SHEET NO.	SHEET
1	COVER SHEET
2	SUMMARY OF QUANTITIES SCHEDULE OF QUANTITIES
3-4	TYPICAL SECTIONS
5	GENERAL NOTES TRAFFIC CONTROL & PROTECTION HMA MIXTURE REQUIREMENTS APPLICATION RATES
6-8	PLAN SHEET - RESURFACING
9-10	PAVEMENT MARKINGS
11	LONGITUDINAL JOINT SEALANT
12	HMA ENTRANCE RESURFACING
13	HMA MAILBOX TURNOUTS
14-15	BUTT JOINT - FEATHER EDGE DETAILS
16-18	CROSS SECTIONS - ROADWAY

STANDARDS

- STANDARD 701011-04
- STANDARD 701306-04
- STANDARD 701311-03
- STANDARD 701901-08
- STANDARD 780001-05

THE PROPOSED IMPROVEMENT CONSISTS OF HMA SURFACE REMOVAL, OVERLAYING THE EXISTING ROADWAY WITH 1" LEVELING BINDER (MACHINE METHOD) AND 1 1/2" POLY. HMA SURFACE COURSE, AGGREGATE SHOULDERS, PAVEMENT MARKINGS AND OTHER ANCILLARY WORK.

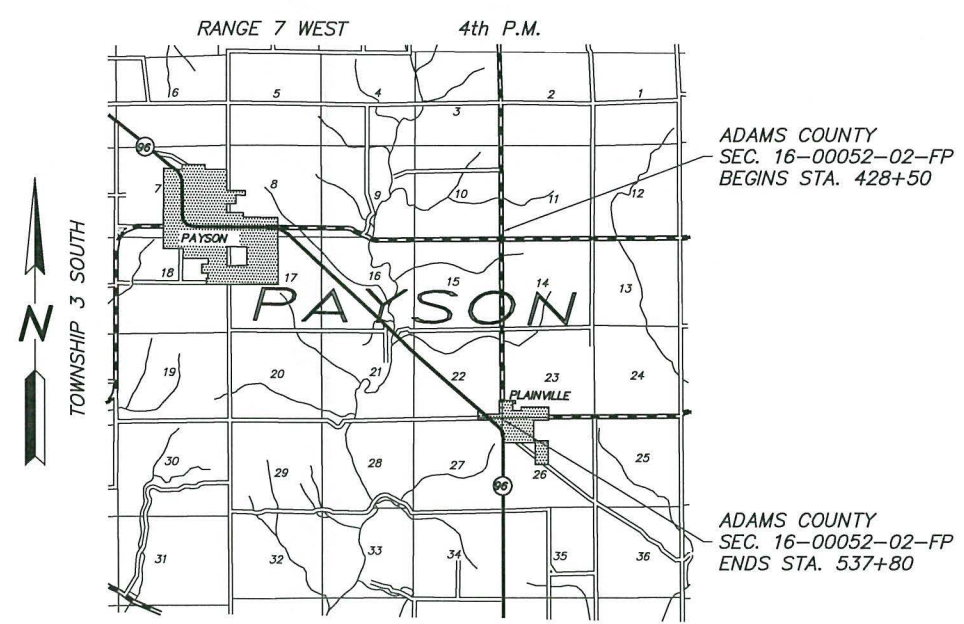
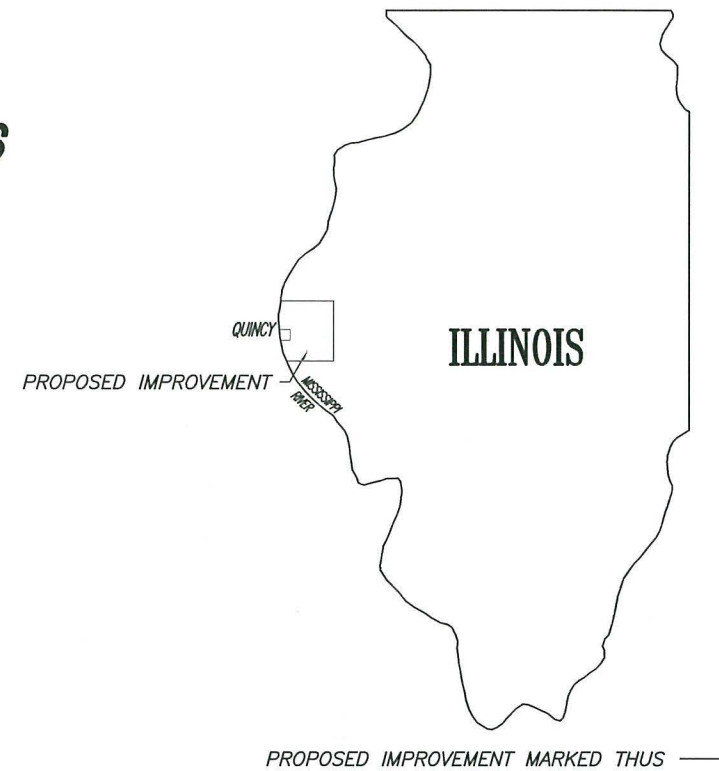


FULL SIZE PLANS HAVE BEEN PREPARED USING STANDARD ENGINEERING SCALES. REDUCED SIZED PLANS WILL NOT CONFORM TO STANDARD SCALES. IN MAKING MEASUREMENTS ON REDUCED PLANS, THE ABOVE SCALES MAY BE USED.

UTILITIES:

J.U.L.I.E.	1-800-892-0123
AT&T	SPRINGFIELD, IL
ABS WATER COOP	CLAYTON, IL
AMEREN ILLINOIS	QUINCY, IL
ADAMS TELESYS	GOLDEN, IL
VILLAGE OF PLAINVILLE	PLAINVILLE, IL
NICOR	CARTHAGE, IL
ADAMS ELECTRIC COOP	CAMP POINT, IL

STATE OF ILLINOIS
DEPARTMENT OF TRANSPORTATION
DIVISION OF HIGHWAYS
PLANS FOR PROPOSED
SURFACE TRANSPORTATION / RURAL PROGRAM FUNDS
ADAMS COUNTY SEC. 16-00052-02-FP
FAS ROUTE 593 (CO. HWY 4)
PROJECT NO. H20C(085)
JOB NO. C-96-019-19



LOCATION MAP



SUMMARY OF LENGTH:

GROSS LENGTH:
 FAS 593 - STA. 428+50 TO STA. 537+80 = 10,930.0 FT.
 FAS 592 - STA. 135+25 TO STA. 138+75 = 350.0 FT.
 NET LENGTH TO BE IMPROVED = 11,280.0 FT. = 2.136 MILES

THESE PLANS WERE PREPARED BY ME OR A FULL TIME MEMBER OF MY STAFF WORKING UNDER MY PERSONAL SUPERVISION.

SUBMITTED BY James R. Frankenhoff DATE 12/6/18
 COUNTY ENGINEER
 LICENSE NO. 062-044792
 LIC. EXPIRES 11/30/2019



APPROVED 12/6/18
James R. Frankenhoff
 COUNTY ENGINEER

PASSED 2-11-19
Ch L Isbell
 DISTRICT ENGINEER OF LOCAL ROADS AND STREETS

RELEASING FOR BID BASED ON LIMITED REVIEW 2-11-19
Jeff M. Sautter
 REGION FOUR ENGINEER

STATE OF ILLINOIS
DEPARTMENT OF TRANSPORTATION

PREPARED BY
 ADAMS COUNTY HIGHWAY DEPARTMENT
 101 NORTH 54th STREET, QUINCY, ILLINOIS

PAVEMENT SCHEDULE

LOCATION / STA. - STA.	BITUMINOUS MATERIALS (TACK COAT)	LEVELING BINDER (MACHINE METHOD), N50	POLYMERIZED HOT-MIX ASPHALT SURFACE COURSE, MIX "C", N50	AGGREGATE SHOULDERS, TYPE B	SHORT TERM PAVEMENT MARKING	SHORT TERM PAVEMENT MARKING REMOVAL
	POUND	TON	TON	TON	FOOT	SQ FT
STA. 428+50 - 537+80	16,650	1,450	2,250	1,900	1,064	355
TOTAL	16,650	1,450	2,250	1,900	1,064	355

HMA SURFACE REMOVAL

LOCATION / STA. - STA.	HOT-MIX ASPHALT SURFACE REMOVAL - BUTT JOINT	TEMPORARY RAMP	HOT-MIX ASPHALT SURFACE REMOVAL, VARIABLE DEPTH
	SQ. YD.	SQ. YD.	SQ. YD.
L.I. STA. 529+60 - 533+10			194
STA. 533+60 - 537+80	23	49	934
STA. 137+25 - 138+75	200	16	
TOTAL	223	65	1,128

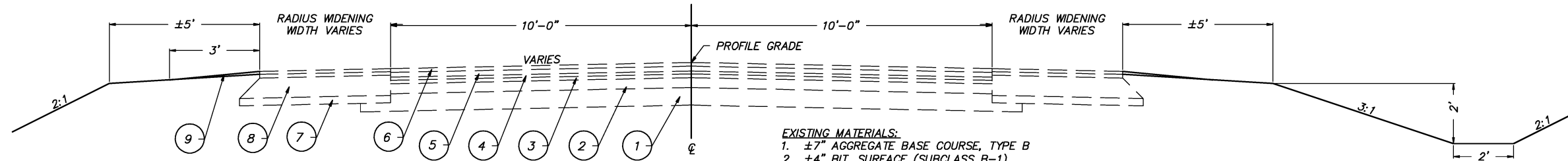
SUMMARY OF QUANTITIES

CODE NUMBER	ITEM	UNIT	TOTAL QUANTITY	SPECIAL PROVISION
35101400	AGGREGATE BASE COURSE, TYPE B	TON	90	
35800100	PREPARATION OF BASE	SQ YD	425	*
40600290	BITUMINOUS MATERIALS (TACK COAT)	POUND	16,650	*
40600625	LEVELING BINDER (MACHINE METHOD), N50	TON	1,450	*
40600982	HOT-MIX ASPHALT SURFACE REMOVAL - BUTT JOINT	SQ YD	223	*
40600990	TEMPORARY RAMP	SQ YD	65	
40603510	POLYMERIZED HOT-MIX ASPHALT SURFACE COURSE, MIX "C", N50	TON	2,250	*
40800029	BITUMINOUS MATERIALS (TACK COAT)	POUND	56	*
40800050	INCIDENTAL HOT-MIX ASPHALT SURFACING	TON	110	
48101200	AGGREGATE SHOULDERS, TYPE B	TON	1,900	*
60255500	MANHOLES TO BE ADJUSTED	EACH	3	*
67100100	MOBILIZATION	L SUM	1	
70300100	SHORT TERM PAVEMENT MARKING	FOOT	1,064	
70300150	SHORT TERM PAVEMENT MARKING REMOVAL	SQ FT	355	*
Δ 78001110	PAINT PAVEMENT MARKING - LINE 4"	FOOT	12,384	
X0327979	PAVEMENT MARKING REMOVAL - GRINDING	SQ FT	4,103	*
X2020410	EARTH EXCAVATION (SPECIAL)	CU YD	56	*
X4401198	HOT-MIX ASPHALT SURFACE REMOVAL, VARIABLE DEPTH	SQ YD	1,128	*
X7010216	TRAFFIC CONTROL AND PROTECTION, (SPECIAL)	L SUM	1	*
Z0033700	LONGITUDINAL JOINT SEALANT	FOOT	11,844	*
# Z0076600	TRAINEES	HOURL	500	*
# Z0076604	TRAINEES TRAINING PROGRAM GRADUATE	HOURL	500	*

CONSTRUCTION CODE: 0005 Δ SPECIALTY ITEMS #0042

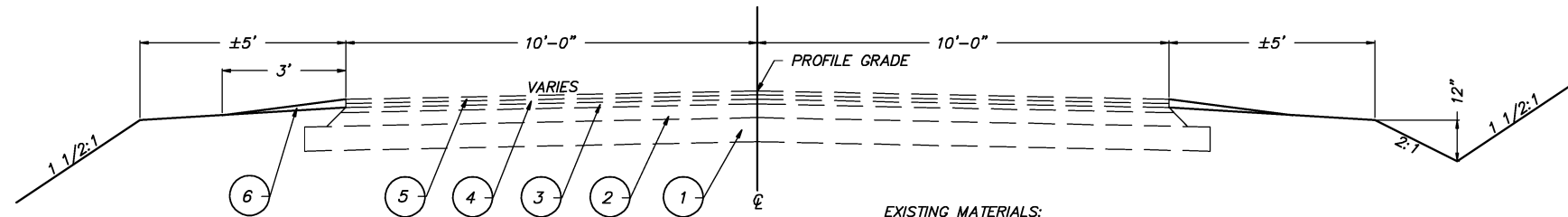
USER NAME =	DESIGNED -	REVISED -	ADAMS COUNTY HIGHWAY DEPARTMENT	SUMMARY OF QUANTITIES SCHEDULE OF QUANTITIES FAS ROUTE 593 (CO HWY 4)			COUNTY	ROUTE	SECTION	TOTAL SHEETS	SHEET NO.
PLOT SCALE = 1:2	DRAWN - JRF	REVISED -		ADAMS	FAS 593	16-00052-02-FP	18	2			
CHECKED -	DATE -	REVISED -		SCALE	SHEET 1 OF 1 SHEETS	STA. -- TO STA. --	CONTRACT NO. 93725				
PLOT DATE =	DATE -	REVISED -									

TYPICAL CROSS SECTIONS



EXISTING TYPICAL SECTION
 STATION 428+50 TO STATION 429+99
 STATION 430+19 TO STATION 432+00

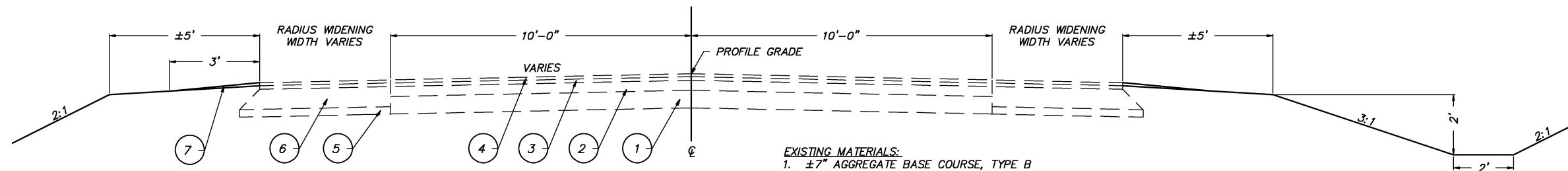
- EXISTING MATERIALS:**
1. ±7" AGGREGATE BASE COURSE, TYPE B
 2. ±4" BIT. SURFACE (SUBCLASS B-1)
 3. 1½" HMA BINDER COURSE, MIX B
 4. 1½" HMA SURFACE COURSE, MIX C, TY 2
 5. 2" HMA BINDER COURSE, MIX A
 6. 1½" HMA SURFACE COURSE, MIX C
 7. 4" AGGREGATE BASE COURSE, TYPE B
 8. 8" BIT. CONCRETE BASE COURSE WIDENING
 9. AGGREGATE WEDGE SHOULDER



EXISTING TYPICAL SECTION
 STATION 432+00 TO STATION 537+80

- EXISTING MATERIALS:**
1. ±7" AGGREGATE BASE COURSE, TYPE B
 2. ±4" BIT. SURFACE (SUBCLASS B-1)
 3. 1½" HMA BINDER COURSE
 4. 1½" HMA SURFACE COURSE, MIX C, TY 2
 5. 1½" BITUMINOUS MIXTURE COMPLETE
 6. AGGREGATE WEDGE SHOULDER

- EXISTING CONSTRUCTION SECTIONS:**
- SEC. 5-A-MFT
 - SEC. 52Q-1
 - SEC. 82-00103-00-IR
 - SEC. 83-00052-01-RS
 - SEC. 92-00134-00-FP
 - SEC. 01-00000-01-GM



EXISTING TYPICAL SECTION
 STATION 135+25 TO STATION 138+75

- EXISTING MATERIALS:**
1. ±7" AGGREGATE BASE COURSE, TYPE B
 2. ±4" BIT. SURFACE (SUBCLASS B-1)
 3. 2" HMA BINDER COURSE, MIX A
 4. 1½" HMA SURFACE COURSE, MIX C, TY 2
 5. 4" AGGREGATE BASE COURSE, TYPE B
 6. 8" BIT. CONCRETE BASE COURSE
 7. AGGREGATE WEDGE SHOULDER

USER NAME =	DESIGNED -	REVISED -	
	DRAWN - JRF	REVISED -	
PLOT SCALE = 1:2	CHECKED -	REVISED -	
PLOT DATE =	DATE -	REVISED -	

**ADAMS COUNTY
 HIGHWAY DEPARTMENT**

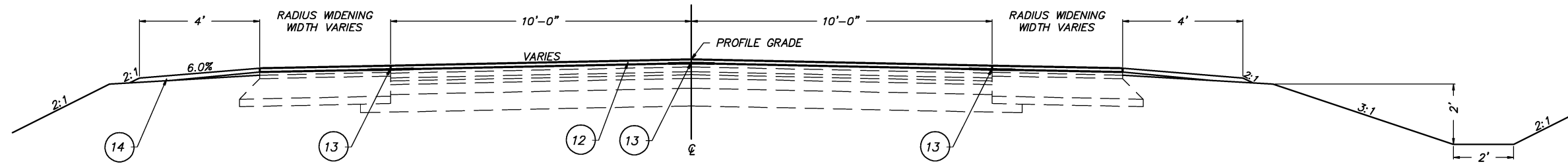
**TYPICAL SECTIONS
 FAS ROUTE 593 (CO HWY 4)**

COUNTY	ROUTE	SECTION	TOTAL SHEETS	SHEET NO.
ADAMS	FAS 593	16-00052-02-FP	18	3

SCALE SHEET 1 OF 2 SHEETS STA. -- TO STA. --

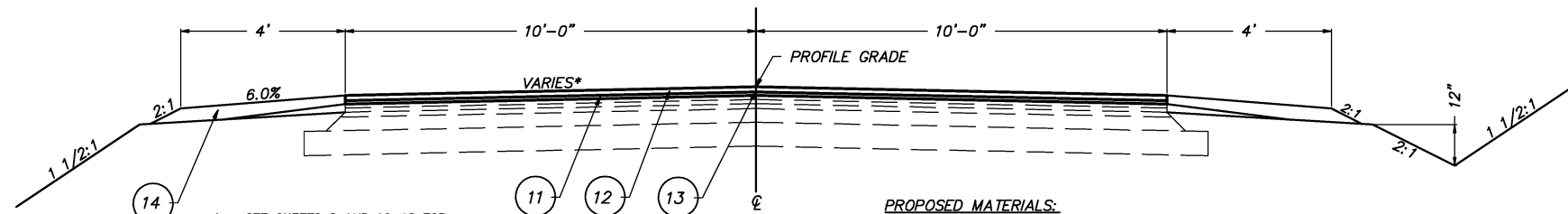
CONTRACT NO. 93725

TYPICAL CROSS SECTIONS



PROPOSED TYPICAL SECTION
 STATION 428+50 TO STATION 429+99
 STATION 430+19 TO STATION 432+00

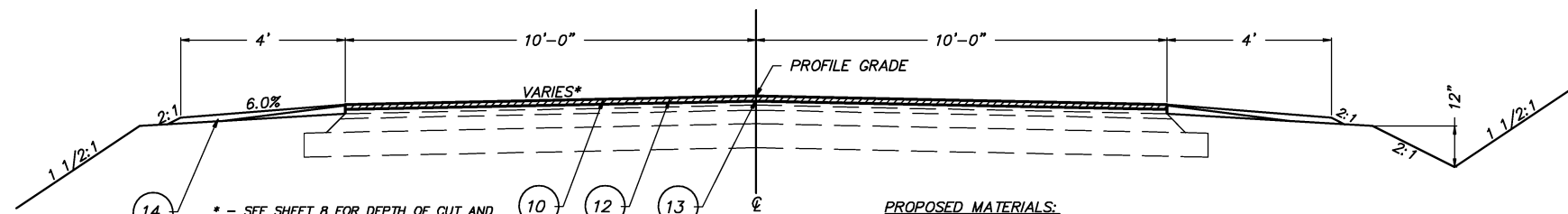
PROPOSED MATERIALS:
 12. 1½" POLY. HOT-MIX ASPHALT SURFACE COURSE, MIX "C", N50
 13. LONGITUDINAL JOINT SEALANT
 14. AGGREGATE SHOULDER, TYPE B (THICKNESS VARIES)



* - SEE SHEETS 8 AND 16-18 FOR LOCATIONS OF CROSS SLOPE REDUCTION SEGMENTS.

EXISTING TYPICAL SECTION
 STATION 432+00 TO STATION 533+60

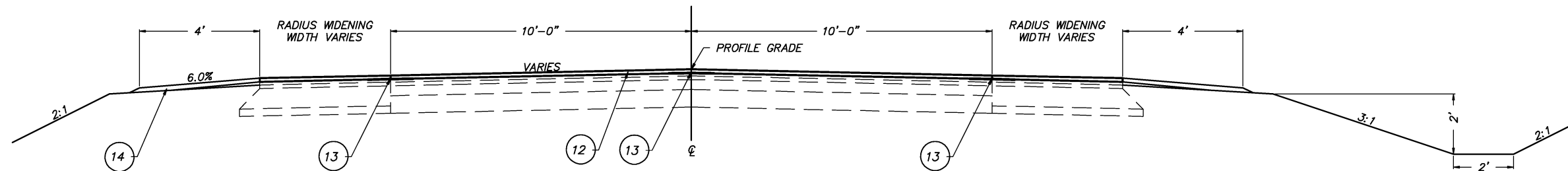
PROPOSED MATERIALS:
 11. 1" LEVELING BINDER (MACHINE METHOD), N50
 12. 1½" POLY. HOT-MIX ASPHALT SURFACE COURSE, MIX "C", N50
 13. LONGITUDINAL JOINT SEALANT
 14. AGGREGATE SHOULDER, TYPE B (THICKNESS VARIES)



* - SEE SHEET 8 FOR DEPTH OF CUT AND LOCATION OF CROSS SLOPE CORRECTIONS.

EXISTING TYPICAL SECTION
 STATION 533+60 TO STATION 537+80

PROPOSED MATERIALS:
 10. HMA SURFACE REMOVAL, VARIABLE DEPTH
 12. 1½" POLY. HOT-MIX ASPHALT SURFACE COURSE, MIX "C", N50
 13. LONGITUDINAL JOINT SEALANT
 14. AGGREGATE SHOULDER, TYPE B (THICKNESS VARIES)



EXISTING TYPICAL SECTION
 STATION 135+25 TO STATION 138+75

PROPOSED MATERIALS:
 12. 1½" POLY. HOT-MIX ASPHALT SURFACE COURSE, MIX "C", N50
 13. LONGITUDINAL JOINT SEALANT
 14. AGGREGATE SHOULDER, TYPE B (THICKNESS VARIES)

USER NAME =	DESIGNED -	REVISED -
PLOT SCALE = 1:2	DRAWN - JRF	REVISED -
PLOT DATE =	CHECKED -	REVISED -
	DATE -	REVISED -

**ADAMS COUNTY
 HIGHWAY DEPARTMENT**

**TYPICAL SECTIONS
 FAS ROUTE 593 (CO HWY 4)**

COUNTY	ROUTE	SECTION	TOTAL SHEETS	SHEET NO.
ADAMS	FAS 593	16-00052-02-FP	18	4

SCALE SHEET 2 OF 2 SHEETS STA. -- TO STA. --

CONTRACT NO. 93725

GENERAL NOTES

- WHERE SECTION OR SUB-SECTION STONES, PROPERTY PINS, USGS BENCH MARK MONUMENTS, AND U.S. ARMY CORPS OF ENGINEERS SURVEY MARKERS ARE ENCOUNTERED, THE ENGINEER SHALL BE NOTIFIED BEFORE SUCH STONES AND MONUMENTS ARE REMOVED. THE CONTRACTOR SHALL PROTECT AND CAREFULLY PRESERVE ALL PROPERTY MARKS UNTIL AN OWNER, AN AUTHORIZED SURVEYOR OR THEIR REPRESENTATIVE HAS WITNESSED OR OTHERWISE REFERENCED THE PROPERTY MARKS LOCATION.
- ALL PRIVATELY OWNED UTILITIES, UNLESS OTHERWISE SPECIFIED, WILL BE MOVED BY THEIR RESPECTIVE OWNERS WHERE REQUIRED. THE FOLLOWING UTILITY COMPANIES MAY HAVE FACILITIES WITHIN THE LIMITS OF CONSTRUCTION:

ABS WATER COOP (WATER)	ADAMS TELESYS (COMMUNICATION)	AMEREN ILLINOIS (GAS & ELECTRIC)
ADAMS ELECTRIC COOP (ELECTRIC)	AT&T (COMMUNICATION)	NICOR (GAS)
VILLAGE OF PLAINVILLE (SEWER)		
- THE NOMINAL THICKNESS FOR LEVEL BINDER (MACHINE METHOD) AND THE HOT-MIX ASPHALT MATERIALS IS SHOWN ON THE TYPICAL SECTIONS, STANDARDS, SCHEDULES OR SPECIAL DETAILS. THE CONSTRUCTED THICKNESS OF THE ABOVE ITEMS SHALL NOT BE LESS THAN 90% OF THE NOMINAL THICKNESS AT ANY LOCATION.
- THE UTILITY LOCATIONS, IF MARKED ON THE PLANS, ARE FOR REFERENCE ONLY, AND ARE SHOWN FOR CONTRACTOR INFORMATIONAL USE ONLY, AND ARE NOT TO BE REFERENCED FOR CONSTRUCTION PURPOSES. THE IMPLIED PRESENCE OR ABSENCE OF UTILITIES IS NOT TO BE CONSTRUED BY THE OWNER, ENGINEER, CONTRACTOR, OR SUBCONTRACTORS TO BE AN ACCURATE AND COMPLETE REPRESENTATION OF UTILITIES THAT MAY OR MAY NOT EXIST ON THE CONSTRUCTION SITE.
- THE CONTRACTOR SHALL BE RESPONSIBLE FOR DETERMINING THE LOCATION AND ELEVATION OF ALL EXISTING UTILITIES AND TO NOTIFY ALL UTILITY COMPANIES PRIOR TO THE BEGINNING OF CONSTRUCTION. THE REROUTING, DISCONNECTION, PROTECTION, ETC. OF ANY UTILITIES MUST BE COORDINATED BETWEEN THE CONTRACTOR, UTILITY AND OWNER. SITE SAFETY, INCLUDING THE AVOIDANCE OF HAZARDS ASSOCIATED WITH BURIED AND ABOVE GROUND UTILITIES REMAINS THE SOLE RESPONSIBILITY OF THE CONTRACTOR. THIS WILL BE CONSIDERED INCIDENTAL TO THE CONTRACT.
- ALL DISTURBED AREAS WITHIN THE RIGHT-OF-WAY SHALL BE SEEDED BY OTHERS.
- ANY EXISTING ROAD SIGNS THAT INTERFERE WITH CONSTRUCTION WILL BE REMOVED OR RELOCATED AS DIRECTED BY THE ENGINEER. AFTER THE CONSTRUCTION IS COMPLETED, THE CONTRACTOR WILL REPLACE THE SIGNS AS DIRECTED BY THE ENGINEER. THIS WORK WILL NOT BE PAID FOR SEPERATELY BUT SHALL BE INCLUDED IN THE CONTRACT AND NO ADDITIONAL COMPENSATION WILL BE ALLOWED.

APPLICATION RATES

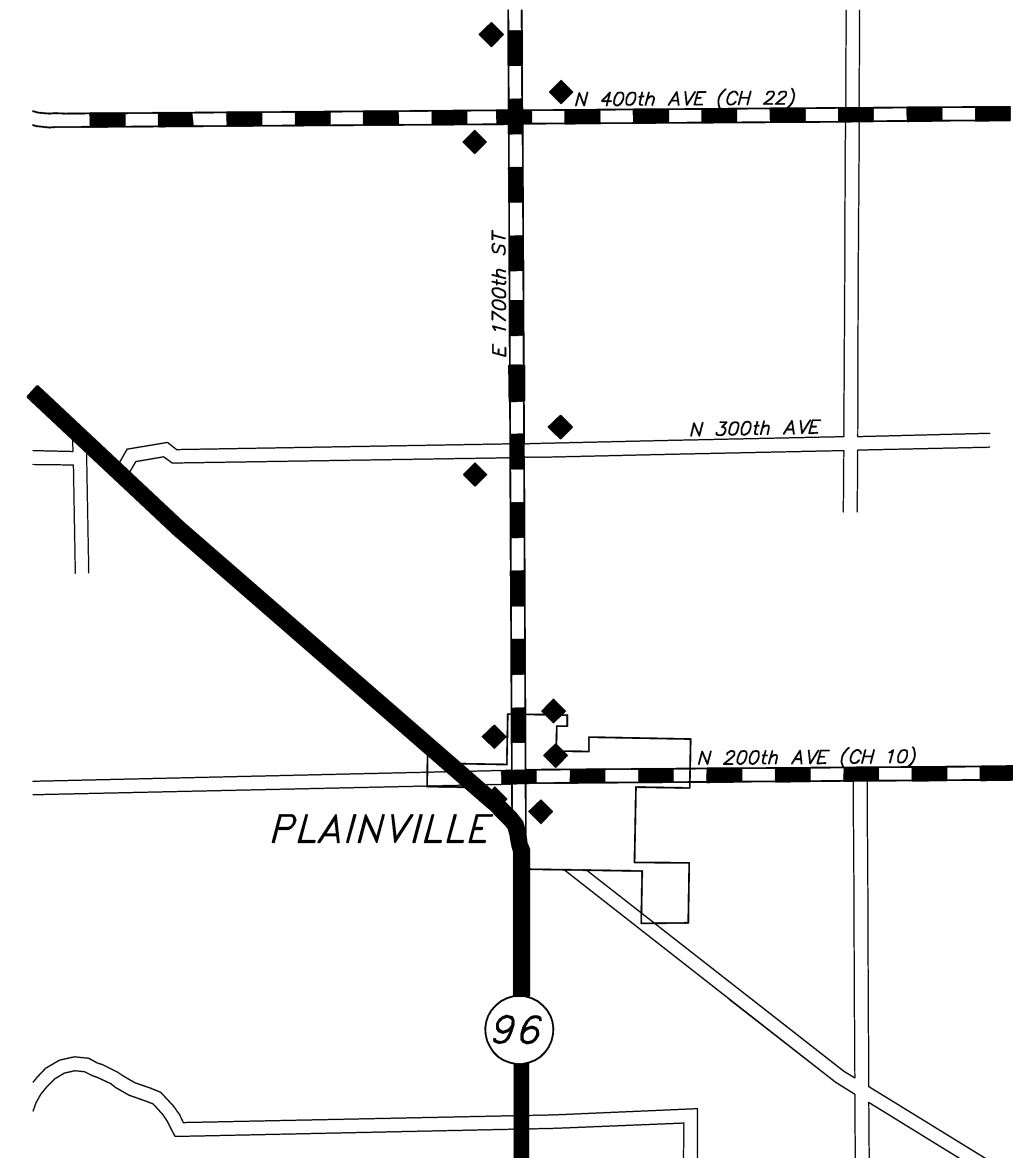
BITUMINOUS MATERIALS (TACK COAT)	
ON EXISTING PAVEMENT	0.05 LB/SQ FT
BETWEEN HMA LIFTS	0.025 LB/SQ FT
AGGREGATE (SURFACE, SHOULDERS)	
	1.8 TON/CU YD

HOT-MIX ASPHALT MIXTURE REQUIREMENTS

PAY ITEM	MIXTURE	ASPHALT GRADE	N Design	VOIDS
LEVELING BINDER, MACHINE METHOD	IL-9.5	PG 64-22	N50	4.0%
HOT-MIX ASPHALT BINDER COURSE	IL-19.0	PG 64-22	N50	4.0%
HOT-MIX ASPHALT SURFACE COURSE	IL-9.5 "C"	PG 64-22	N50	4.0%
POLY. HOT-MIX ASPHALT SURFACE COURSE	IL-9.5 "C"	SBS PG 64-28	N50	4.0%
HOT-MIX ASPHALT SHOULDERS	IL-9.5 "C"	PG 64-22	N50	4.0%

NOTE: HOT-MIX ASPHALT QUANTITIES CALCULATED @ 112 #/SQ. YD. / IN.

TRAFFIC CONTROL AND PROTECTION



◆ ROAD CONSTRUCTION AHEAD

SEE SPECIAL PROVISIONS FOR APPLICATION OF:
"NO PASSING ZONES NOT STRIPPED NEXT ____ MILES"

USER NAME =	DESIGNED -	REVISED -
	DRAWN - JRF	REVISED -
PLOT SCALE = 1:2	CHECKED -	REVISED -
PLOT DATE =	DATE -	REVISED -

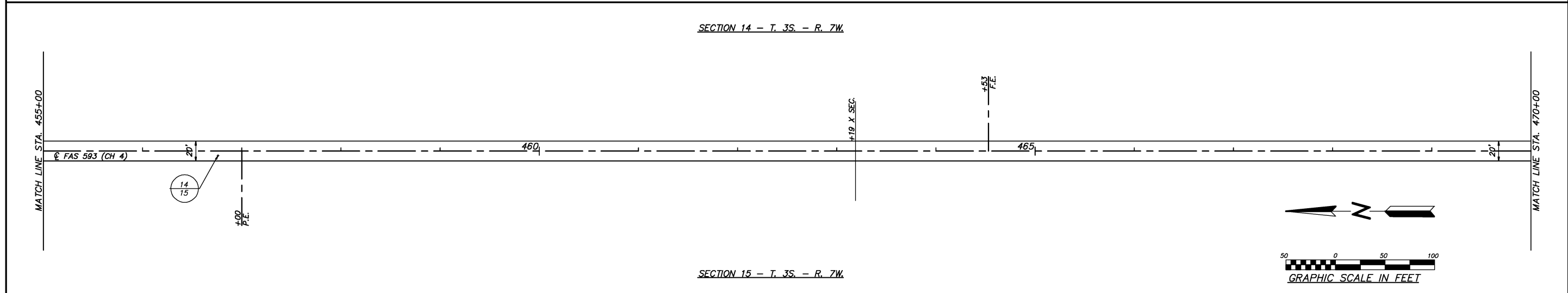
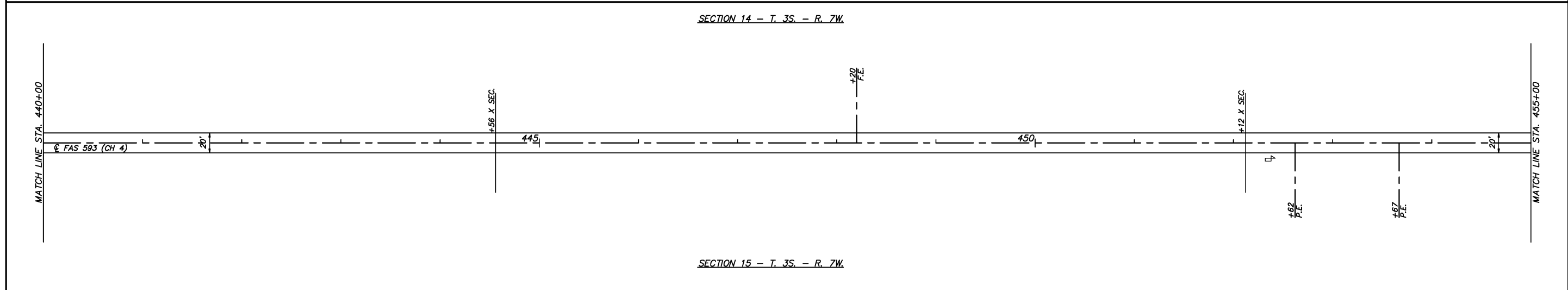
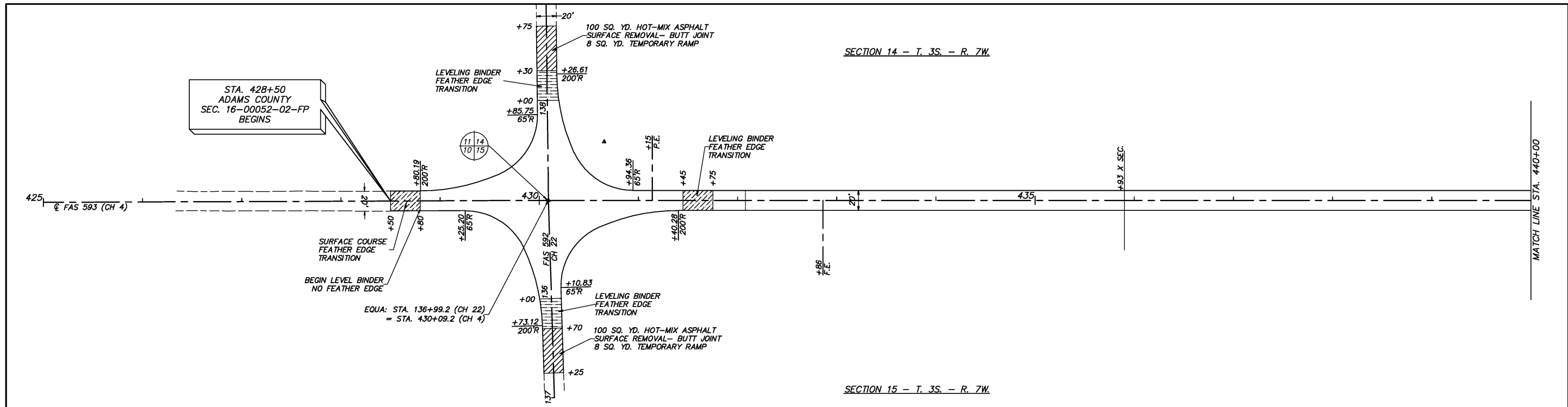
**ADAMS COUNTY
HIGHWAY DEPARTMENT**

GENERAL NOTES HMA MIXTURE REQUIREMENTS
APPLICATION RATES TRAFFIC CONTROL AND PROTECTION
FAS ROUTE 593 (CO HWY 4)

COUNTY	ROUTE	SECTION	TOTAL SHEETS	SHEET NO.
ADAMS	FAS 593	16-00052-02-FP	18	5

SCALE 1:2 SHEET 1 OF 1 SHEETS STA. -- TO STA. --

CONTRACT NO. 93725



USER NAME =	DESIGNED - JRF	REVISED -
	DRAWN - JRF	REVISED -
PLOT SCALE = 1:50	CHECKED -	REVISED -
PLOT DATE =	DATE -	REVISED -

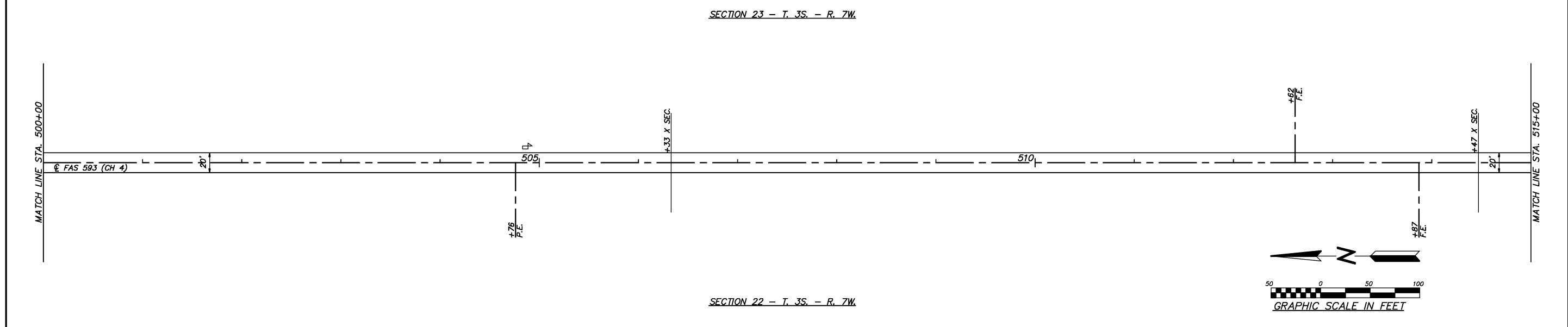
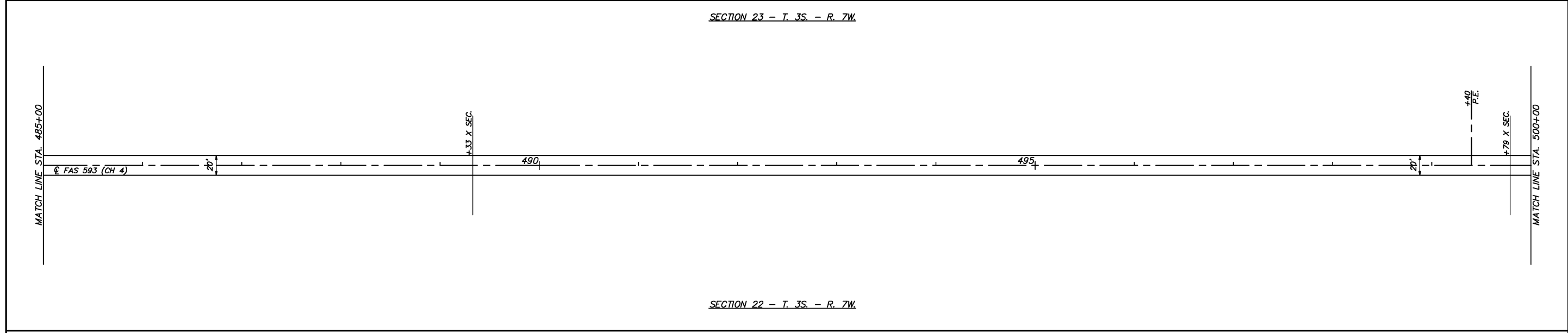
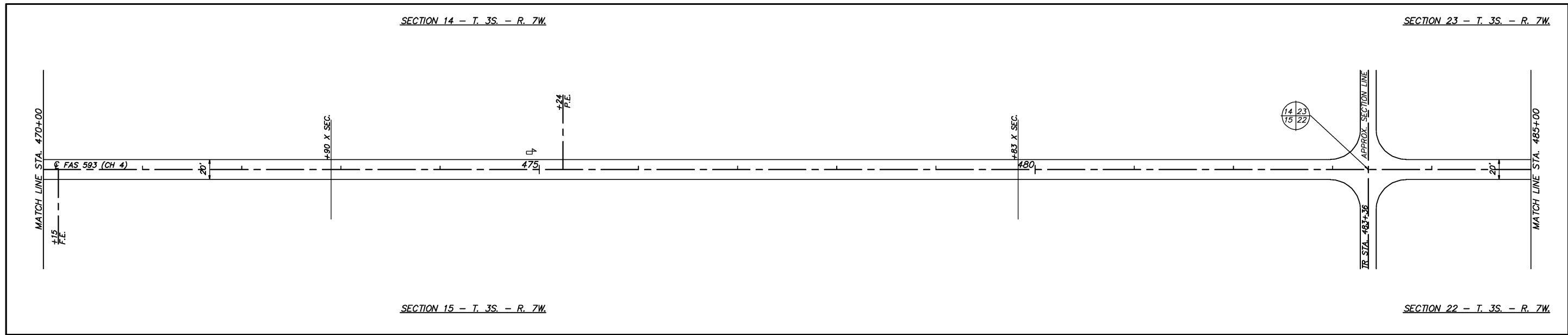
**ADAMS COUNTY
HIGHWAY DEPARTMENT**

**PLAN
FAS ROUTE 593 (CO HWY 4)**

SCALE 1"=50' SHEET 1 OF 3 SHEETS STA. 425+00 TO STA. 470+00

COUNTY	ROUTE	SECTION	TOTAL SHEETS	SHEET NO.
ADAMS	FAS 593	16-00052-02-FP	18	6

CONTRACT NO. 93725



USER NAME =	DESIGNED - JRF	REVISED -
	DRAWN - JRF	REVISED -
PLOT SCALE = 1:50	CHECKED -	REVISED -
PLOT DATE =	DATE -	REVISED -

**ADAMS COUNTY
HIGHWAY DEPARTMENT**

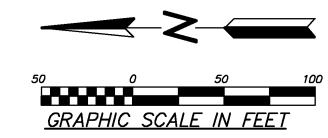
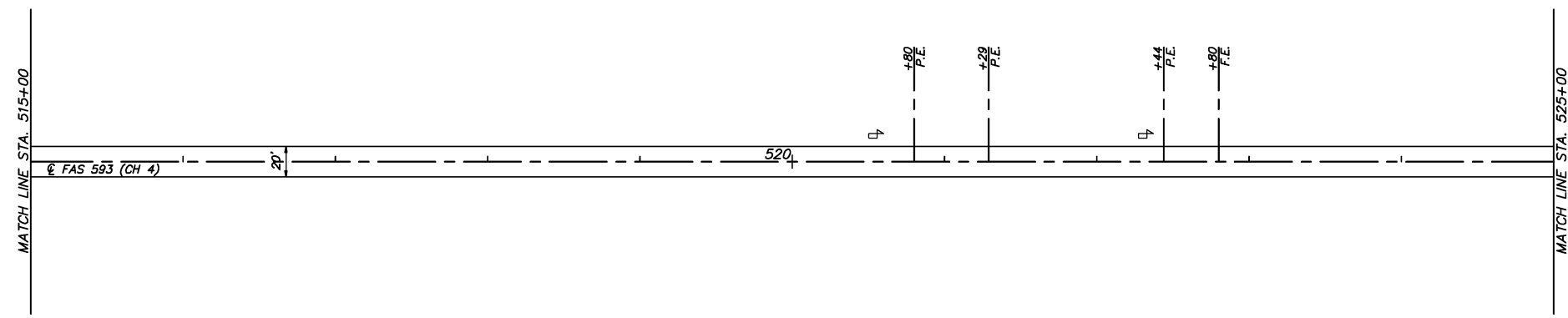
**PLAN
FAS ROUTE 593 (CO HWY 4)**

SCALE 1"=50' SHEET 2 OF 3 SHEETS STA. 470+00 TO STA. 515+00

COUNTY	ROUTE	SECTION	TOTAL SHEETS	SHEET NO.
ADAMS	FAS 593	16-00052-02-FP	18	7

CONTRACT NO. 93725

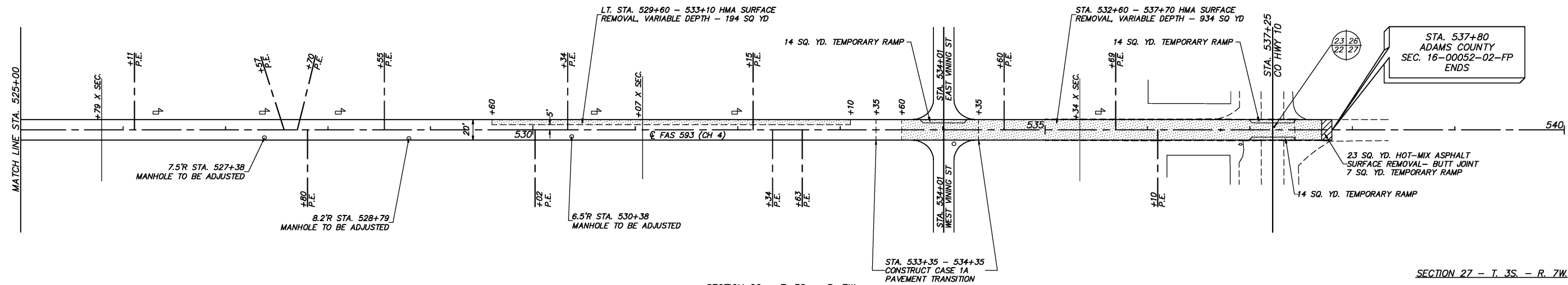
SECTION 23 - T. 3S. - R. 7W.



SECTION 22 - T. 3S. - R. 7W.

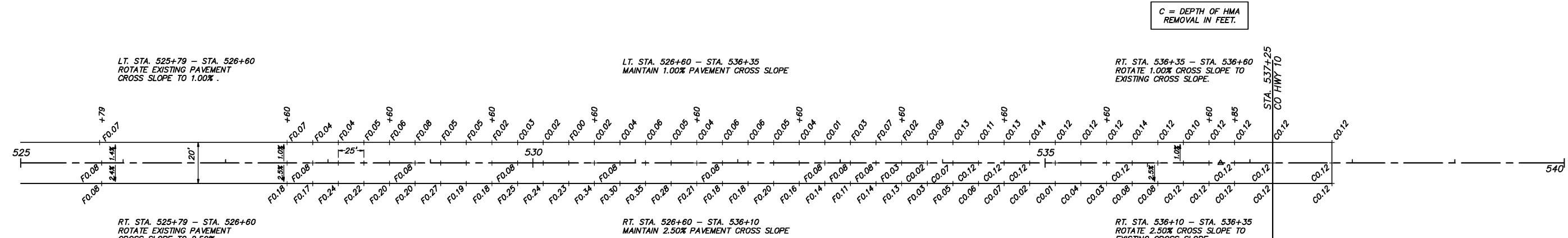
SECTION 23 - T. 3S. - R. 7W.

SECTION 26 - T. 3S. - R. 7W.



SECTION 22 - T. 3S. - R. 7W.

SECTION 27 - T. 3S. - R. 7W.



C = DEPTH OF HMA REMOVAL IN FEET.

F = THICKNESS OF LEVELING BINDER TO BE PLACED IN FEET.

GENERAL NOTES:
 THE DEPTHS SHOWN ON THIS SHEET ARE PROVIDED FOR REFERENCE ONLY.
 THE FINAL DEPTH OF CUT FOR THE HOT-MIX ASPHALT SURFACE REMOVAL AND LIFT THICKNESS FOR THE LEVELING BINDER (MACHINE METHOD) SHALL BE DETERMINED IN THE FIELD.

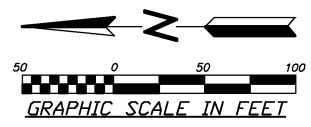
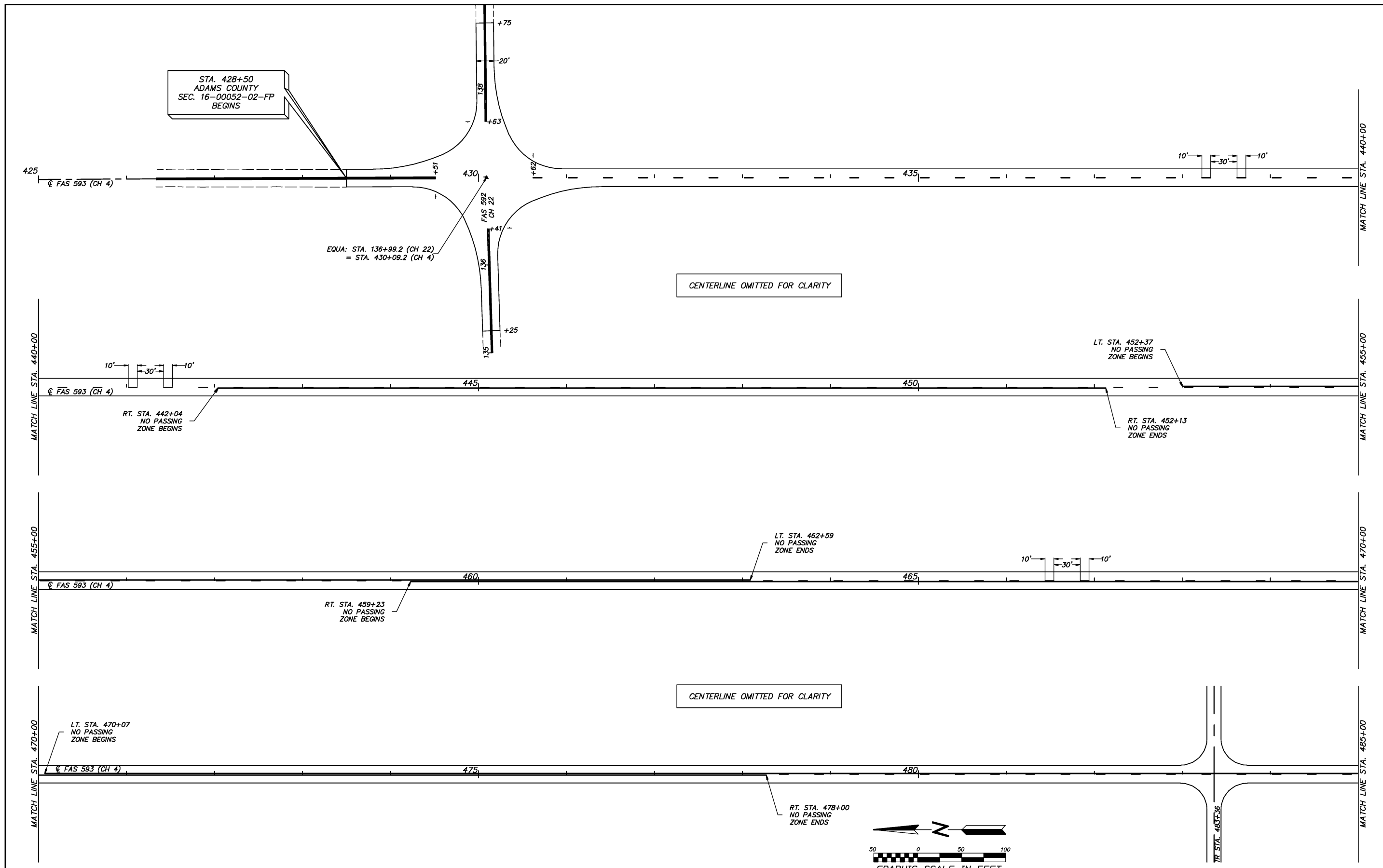
USER NAME =	DESIGNED - JRF	REVISED -
PLOT SCALE = 1:50	DRAWN - JRF	REVISED -
PLOT DATE =	CHECKED -	REVISED -
	DATE -	REVISED -

**ADAMS COUNTY
HIGHWAY DEPARTMENT**

**PLAN
FAS ROUTE 593 (CO HWY 4)**

COUNTY	ROUTE	SECTION	TOTAL SHEETS	SHEET NO.
ADAMS	FAS 593	16-00052-02-FP	18	8

SCALE 1"=50' SHEET 3 OF 3 SHEETS STA. 515+00 TO STA. 540+00 CONTRACT NO. 93725



USER NAME =	DESIGNED - JRF	REVISED -
	DRAWN - JRF	REVISED -
PLOT SCALE = 1:50	CHECKED -	REVISED -
PLOT DATE =	DATE -	REVISED -

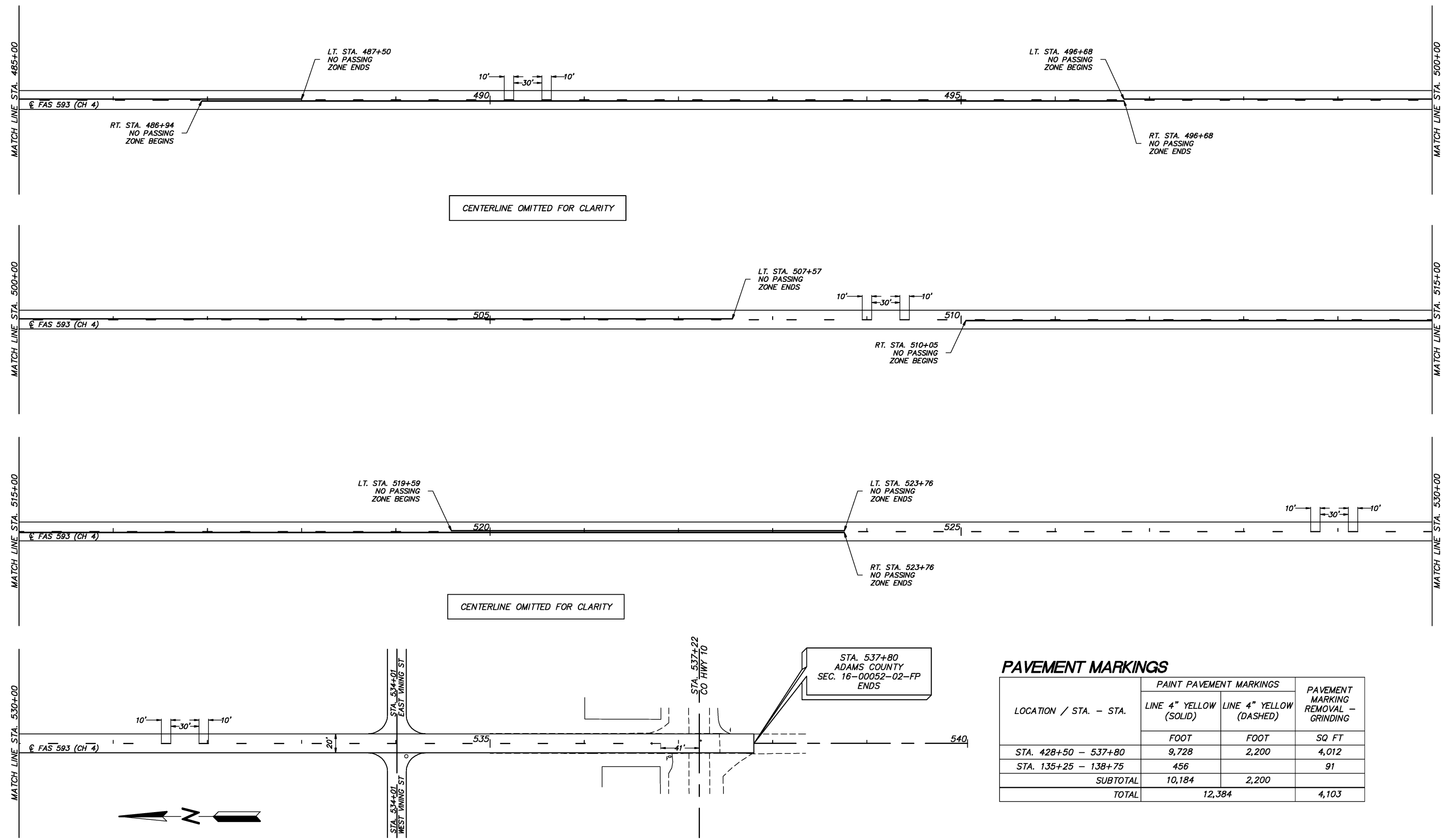
**ADAMS COUNTY
HIGHWAY DEPARTMENT**

**PAVEMENT MARKINGS
FAS ROUTE 593 (CO HWY 4)**

SCALE 1"=50' SHEET 1 OF 2 SHEETS STA. 425+00 TO STA. 485+00

COUNTY	ROUTE	SECTION	TOTAL SHEETS	SHEET NO.
ADAMS	FAS 593	16-00052-02-FP	18	9

CONTRACT NO. 93725



PAVEMENT MARKINGS

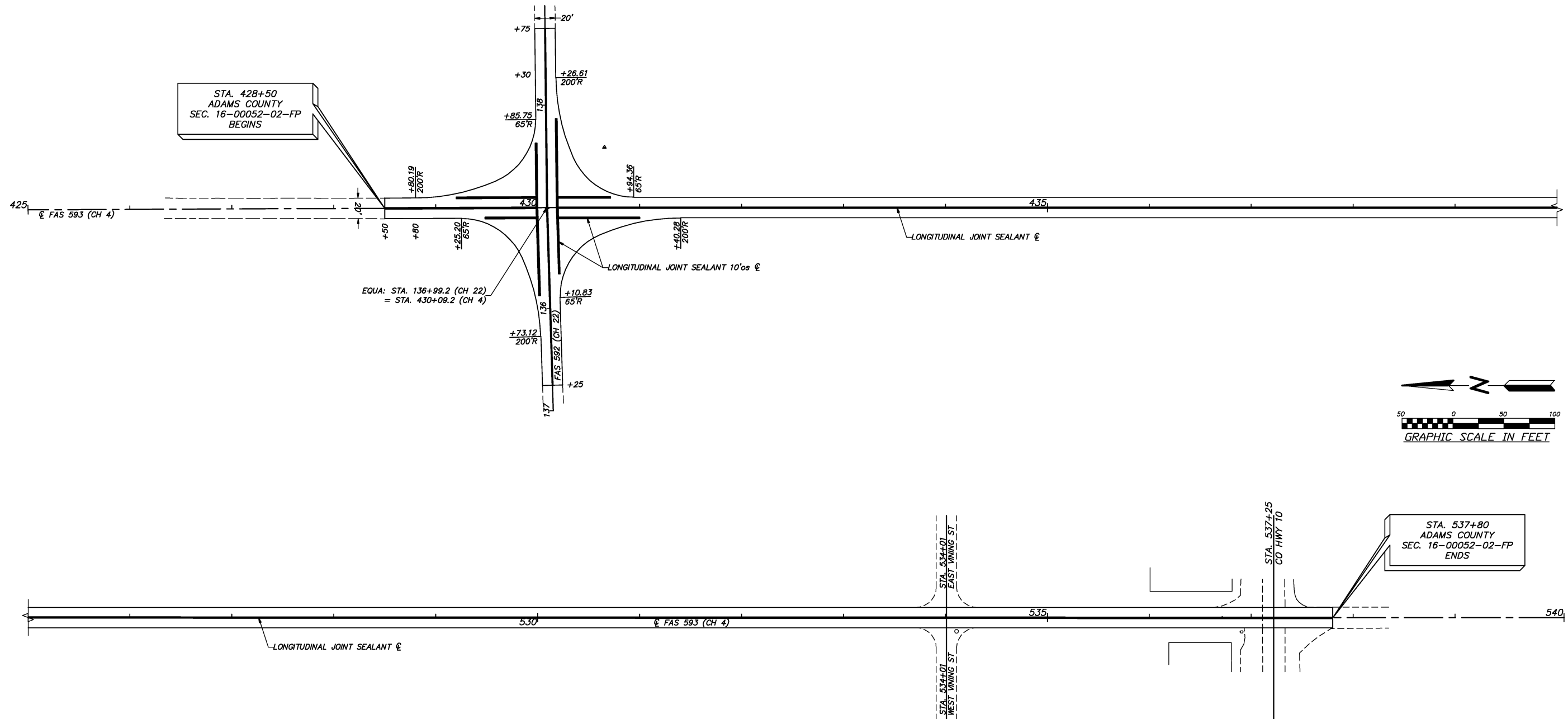
LOCATION / STA. - STA.	PAINT PAVEMENT MARKINGS		PAVEMENT MARKING REMOVAL - GRINDING
	LINE 4" YELLOW (SOLID)	LINE 4" YELLOW (DASHED)	
	FOOT	FOOT	SQ FT
STA. 428+50 - 537+80	9,728	2,200	4,012
STA. 135+25 - 138+75	456		91
SUBTOTAL	10,184	2,200	
TOTAL	12,384		4,103

USER NAME =	DESIGNED - JRF	REVISED -
PLOT SCALE = 1:50	DRAWN - JRF	REVISED -
PLOT DATE =	CHECKED -	REVISED -
	DATE -	REVISED -

**ADAMS COUNTY
HIGHWAY DEPARTMENT**

**PAVEMENT MARKINGS
FAS ROUTE 593 (CO HWY 4)**

SCALE 1"=50'	SHEET 2 OF 2 SHEETS	STA. 485+00 TO STA. 540+00	COUNTY ADAMS	ROUTE FAS 593	SECTION 16-00052-02-FP	TOTAL SHEETS 18	SHEET NO. 10	CONTRACT NO. 93725
--------------	---------------------	----------------------------	--------------	---------------	------------------------	-----------------	--------------	--------------------



LONGITUDINAL JOINT SEALANT (FOOT)

STA. - OFFSET	LENGTH
428+50 - 537+80 CENTERLINE	10,930
428+50 - 537+80 10'os @	262
135+25 - 138+75 CENTERLINE	350
135+25 - 138+75 10'os @	302
TOTAL	11,844

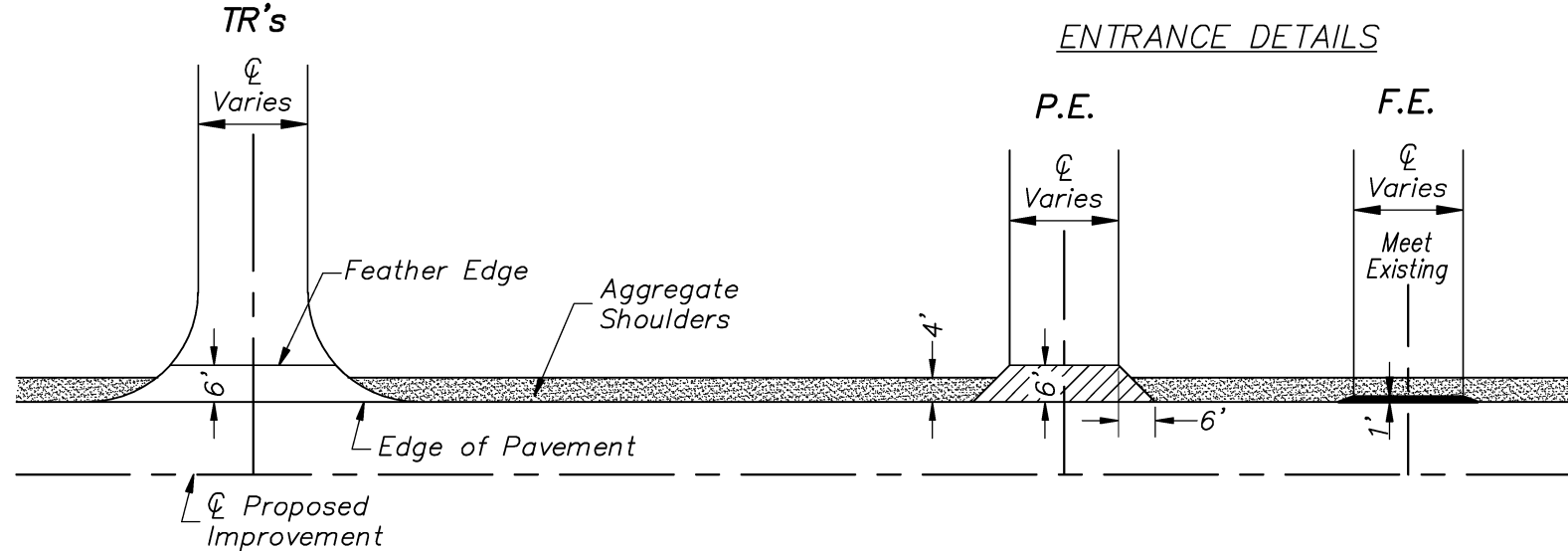
USER NAME =	DESIGNED - JRF	REVISED -
	DRAWN - JRF	REVISED -
PLOT SCALE = 1:50	CHECKED -	REVISED -
PLOT DATE =	DATE -	REVISED -

**ADAMS COUNTY
HIGHWAY DEPARTMENT**

**LONGITUDINAL JOINT SEALANT
FAS ROUTE 593 (CO HWY 4)**

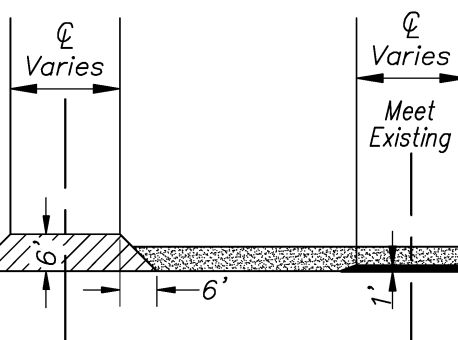
COUNTY	ROUTE	SECTION	TOTAL SHEETS	SHEET NO.
ADAMS	FAS 593	16-00052-02-FP	18	11
SCALE 1"=50'			SHEET 1 OF 1 SHEETS	
STA. 428+50 TO STA. 537+80			CONTRACT NO. 93725	

INTERSECTION DETAIL



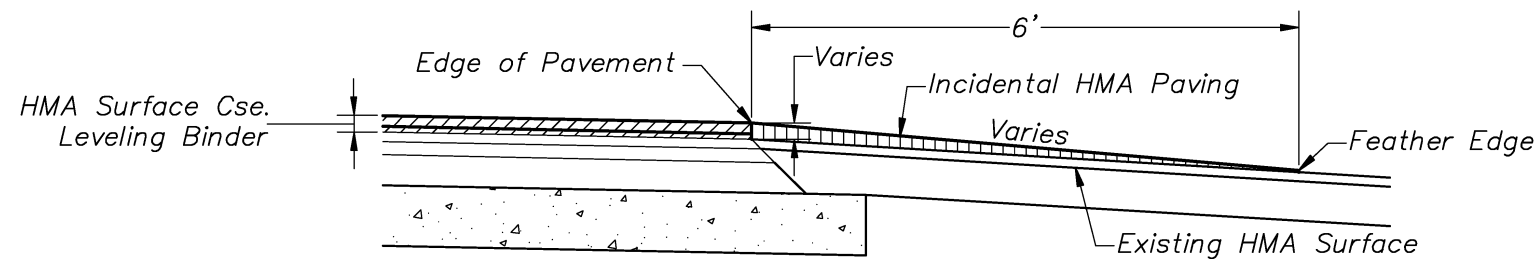
ENTRANCE DETAILS

P.E. F.E.

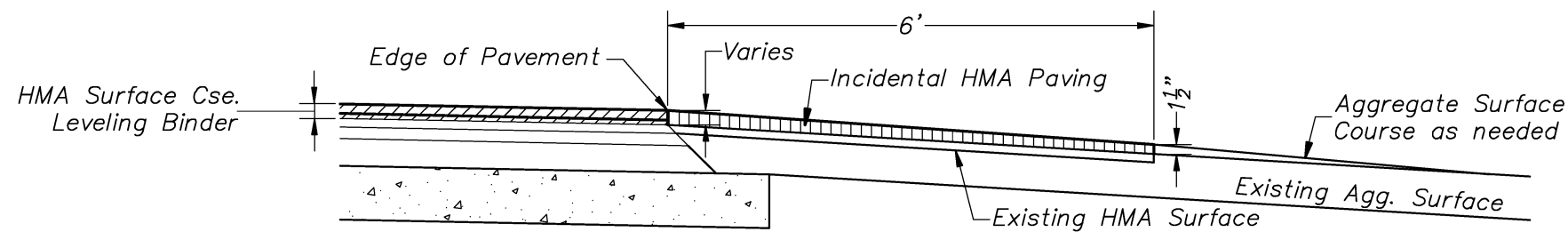


INCIDENTAL PAVING SCHEDULE (ENTRANCES)

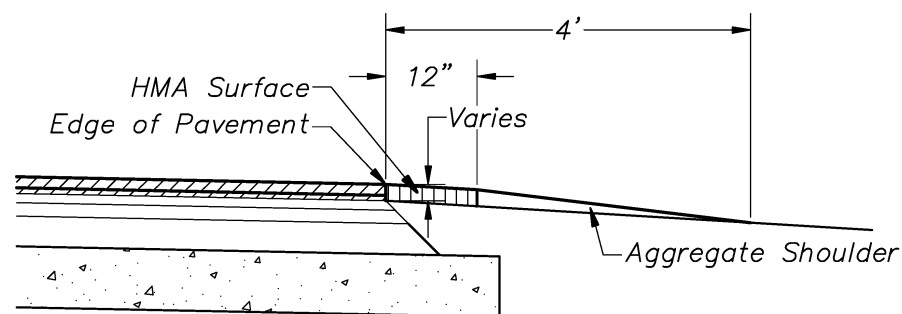
TYPE / STA.	PREPARATION OF BASE	EARTH EXCAVATION, SPECIAL	AGGREGATE BASE COURSE, TYPE B	BITUMINOUS MATERIALS (PRIME COAT)	INCIDENTAL HOT-MIX ASPHALT SURFACING
	SQ YD	CU YD	TON	POUND	TON
P.E. LT. STA. 431+15				7	2
P.E. LT. STA. 448+20	17				3
P.E. RT. STA. 452+62	20				3
P.E. RT. STA. 453+67	20				3
P.E. RT. STA. 457+00				10	3
P.E. LT. STA. 475+24	35				4
TR LT. STA. 483+26	37				5
TR RT. STA. 483+36	28				4
P.E. LT. STA. 499+40		7	12		3
P.E. RT. STA. 504+76	19				3
P.E. LT. STA. 520+80				7	2
P.E. LT. STA. 521+29				6	2
P.E. LT. STA. 522+44				7	2
P.E. LT. STA. 526+11	17				1
P.E. LT. STA. 527+57	12				2
P.E. LT. STA. 527+70	16				2
P.E. RT. STA. 527+80				7	2
P.E. LT. STA. 528+55	17				3
P.E. RT. STA. 530+02	56				16
P.E. LT. STA. 530+34				12	5
P.E. LT. STA. 532+15		3	5		2
P.E. RT. STA. 532+34	14	2	3		3
P.E. RT. STA. 532+63	39				7
P.E. LT. STA. 534+60	14				2
P.E. LT. STA. 535+69	29				4
P.E. RT. STA. 536+10	25				3
TOTAL	415	12	20	56	91



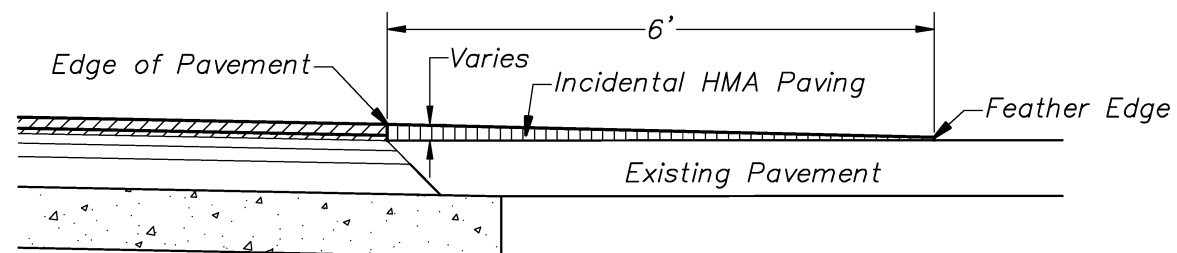
EXISTING HMA or PCC ENTRANCE



EXISTING AGGREGATE SURFACE ENTRANCE



FIELD ENTRANCE



EXISTING SIDE ROADS

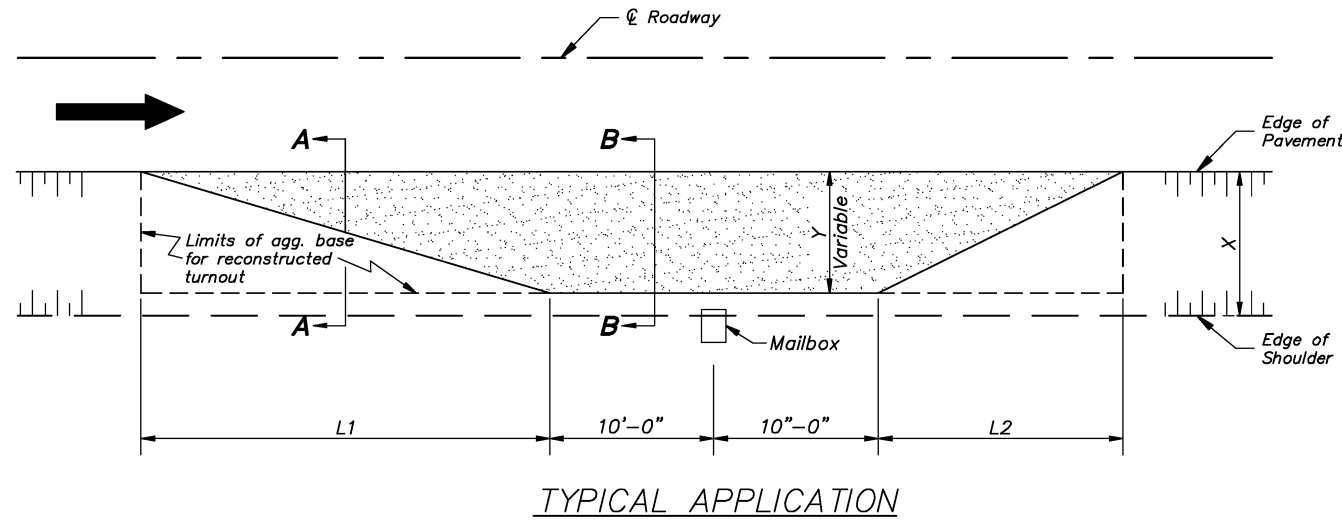
USER NAME =	DESIGNED -	REVISED -
PLOT SCALE = 1:1	DRAWN - JRF	REVISED -
PLOT DATE =	CHECKED -	REVISED -
	DATE -	REVISED -

**ADAMS COUNTY
HIGHWAY DEPARTMENT**

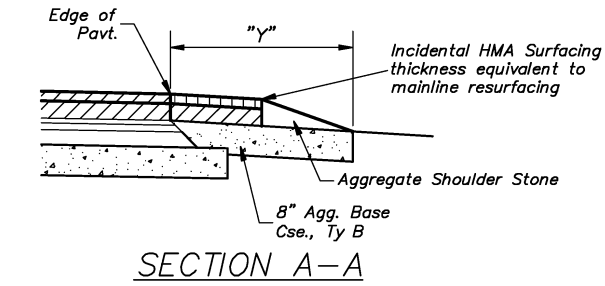
EXISTING ENTRANCE HMA RESURFACING

SCALE: NONE SHEET 1 OF 1 SHEETS STA. -- TO STA. --

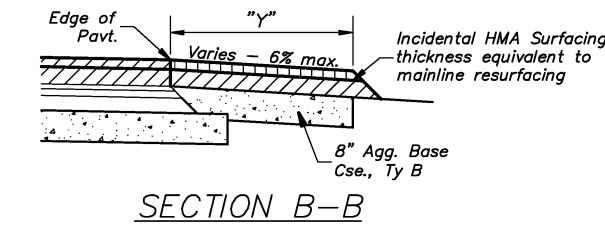
COUNTY	ROUTE	SECTION	TOTAL SHEETS	SHEET NO.
ADAMS	FAS 593	16-00052-02-FP	18	12
CONTRACT NO. 93725				



TYPICAL APPLICATION



SECTION A-A

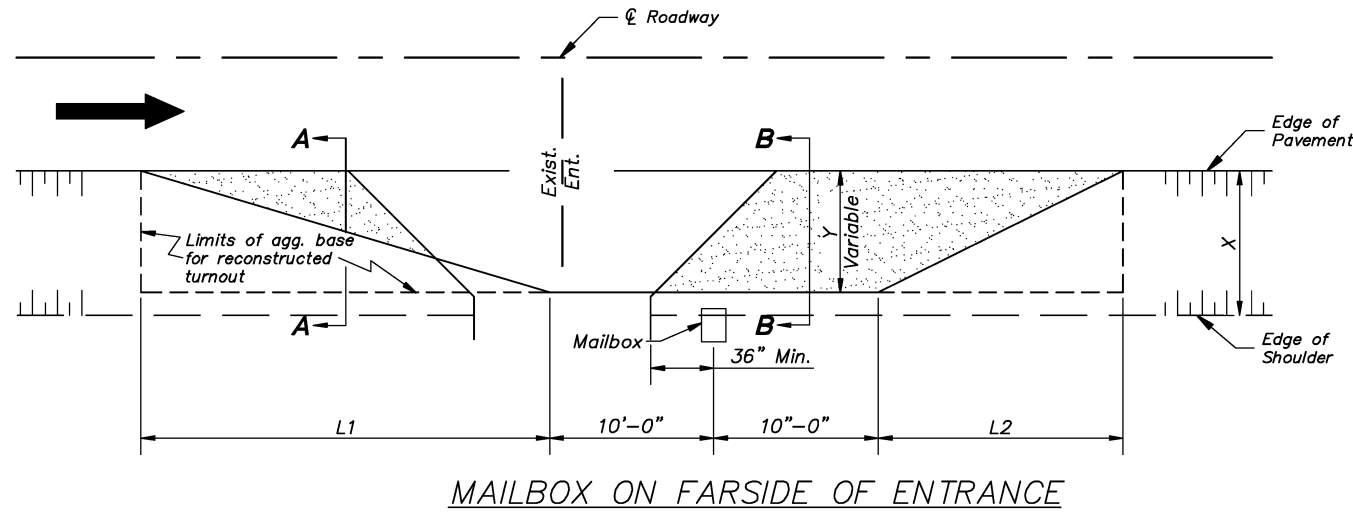


SECTION B-B

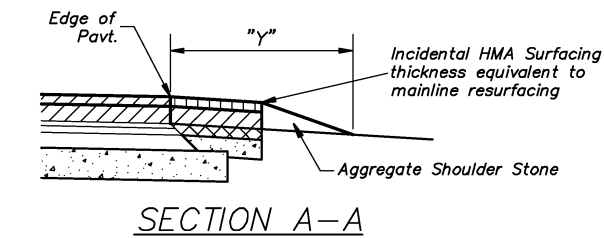
RECONSTRUCTED TURNOUTS

**INCIDENTAL PAVING SCHEDULE
(MAILBOX TURNOUT)**

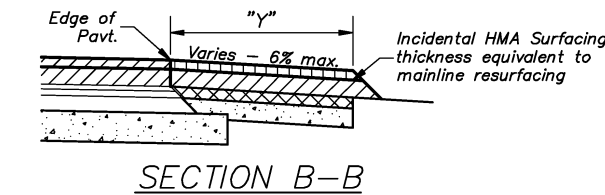
LOCATION / STA. - STA.	PREPARATION OF BASE	EARTH EXCAVATION, SPECIAL	AGGREGATE BASE COURSE, TYPE B	INCIDENTAL HOT-MIX ASPHALT SURFACING
	SQ YD	CU YD	TON	TON
RT. STA. 452+36		4	6	2
LT. STA. 474+90		4	7	2
LT. STA. 504+86		6	10	2
LT. STA. 520+53		4	6	1
LT. STA. 522+22		4	6	1
LT. STA. 526+32		5	7	2
LT. STA. 527+36		3	5	1
LT. STA. 528+10		6	10	3
LT. STA. 530+03		4	6	1
LT. STA. 531+97		4	7	2
LT. STA. 535+52	10			2
TOTAL	10	44	70	19



MAILBOX ON FARSIDE OF ENTRANCE



SECTION A-A



SECTION B-B

RESURFACED TURNOUTS

DIMENSIONS - ft.					
Width of Shoulder (X)	10	8	6	5	4
Width of Turnout (Y)	8	6	4	4	4
L ₁	30	23	15	15	15
L ₂	20	15	10	10	10

GENERAL NOTES:

The Engineer reserves the right to alter the placement of the mailbox turnout to match existing conditions and utilize the entrance as part of the taper.

Mailboxes shall be mounted such that the face of the mailbox is 6" to 12" and the post a minimum of 24" from the edge of the turnout surfacing.

USER NAME =	DESIGNED -	REVISED -
PLOT SCALE = 1:1	DRAWN - JRF	REVISED -
PLOT DATE =	CHECKED -	REVISED -
	DATE -	REVISED -

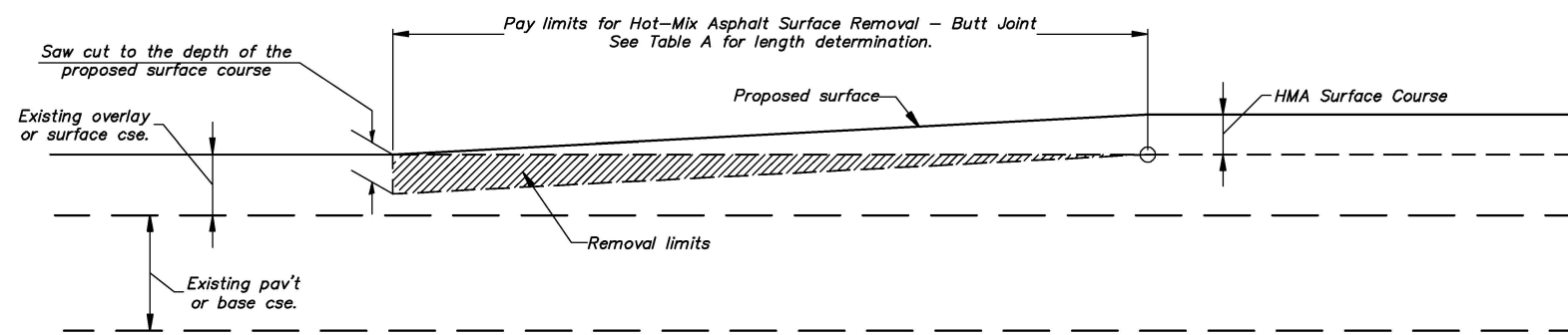
**ADAMS COUNTY
HIGHWAY DEPARTMENT**

MAILBOX TURNOUTS

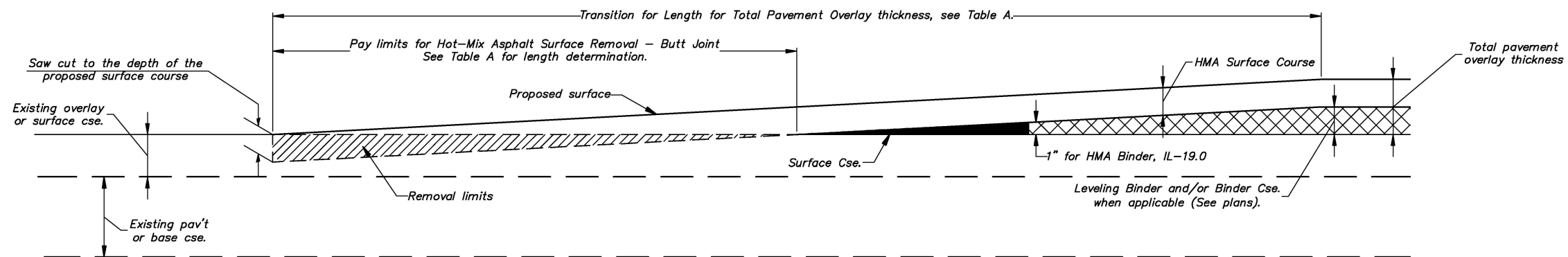
COUNTY	ROUTE	SECTION	TOTAL SHEETS	SHEET NO.
ADAMS	FAS 593	16-00052-02-FP	18	13

SCALE: NONE SHEET 1 OF 1 SHEETS STA. -- TO STA. --

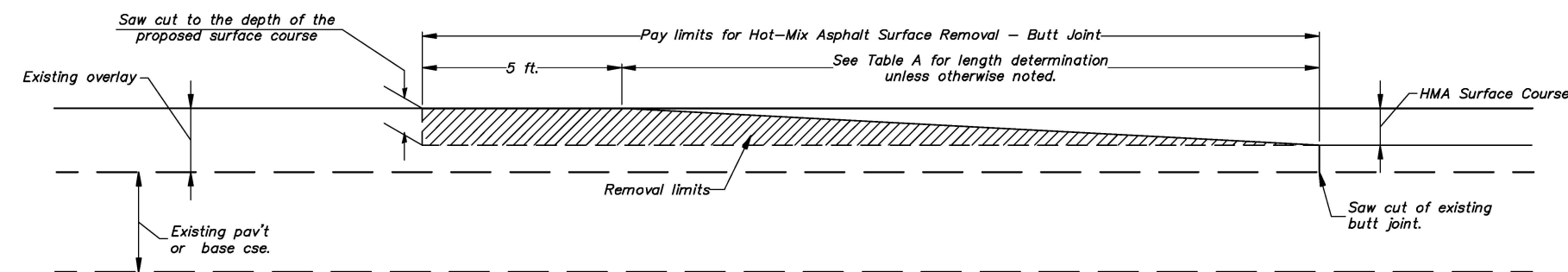
CONTRACT NO. 93725



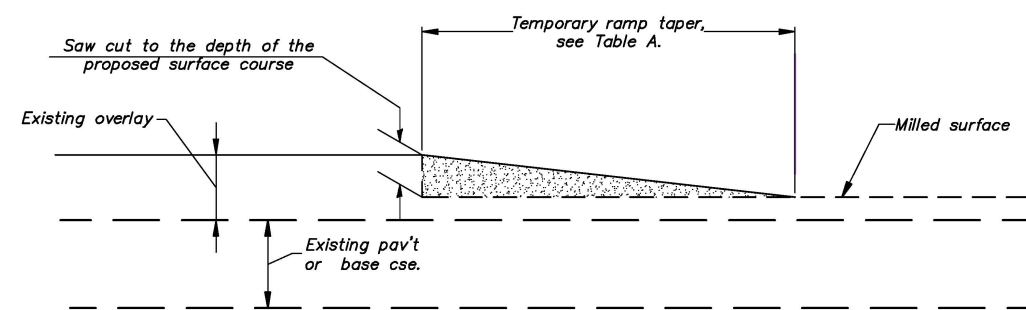
CASE 1: BUTT JOINT w/ SURFACE OVERLAY



CASE 1A: BUTT JOINT w/ SURFACE & BINDER OVERLAY



CASE 1B: BUTT JOINT w/ SURFACE OVERLAY TIE-IN TO EXISTING BUTT JOINT



TEMPORARY RAMP DETAIL

General Notes

1. The work shall be done in accordance with Article 406.08 and the Special Provision for Butt Joints.
2. The pavement surface to be removed may be either HMA or P.C. concrete. The work shall be performed in accordance with Article 440.04 and the Special Provisions for Butt Joints.
3. The saw cut joints shall be primed just prior to the placing of HMA material. The work will be in accordance with the applicable portions of Article 406.05.

TABLE A - TAPER RATES

ELEMENT	POSTED SPEED < 45 MPH	POSTED SPEED => 45 MPH
BUTT JOINT	20' per 1" of DEPTH	30' per 1" of DEPTH
FEATHEREDGE	20' per 1" of THICKNESS	30' per 1" of THICKNESS LESS 3/8" from TOTAL
TEMPORARY RAMP	3' per 1" of HEIGHT	4' per 1" of DEPTH

Length of butt joint = Thickness of Surface Cse multiplied by the Taper Rate.
 Length of Pav't Transition = Total Pav't thickness multiplied by the Taper Rate.

USER NAME =	DESIGNED -	REVISED - 12/12/2017
PLOT SCALE = 1:20	DRAWN - JRF	REVISED -
PLOT DATE =	CHECKED -	REVISED -
	DATE - 1/14/2016	REVISED -

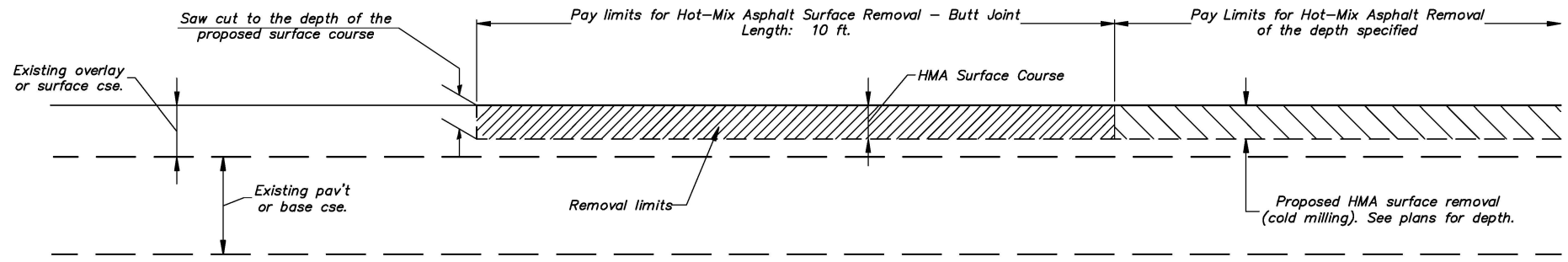
**ADAMS COUNTY
HIGHWAY DEPARTMENT**

**BUTT JOINTS
FEATHER EDGE TRANSITIONS**

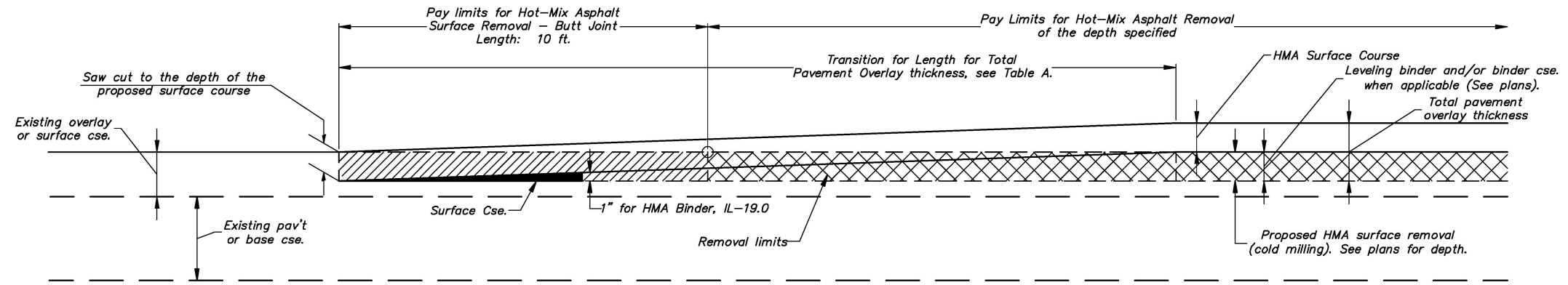
COUNTY	ROUTE	SECTION	TOTAL SHEETS	SHEET NO.
ADAMS	FAS 593	16-00052-02-FP	18	14

SCALE: NONE SHEET 1 OF 2 SHEETS STA. -- TO STA. --

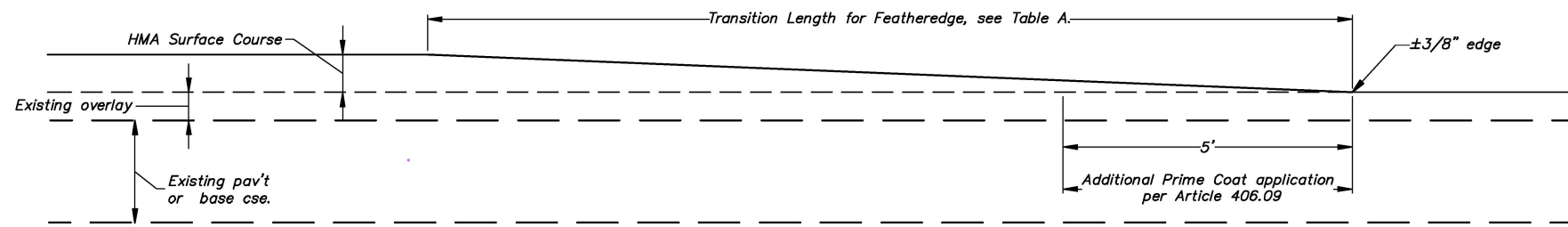
CONTRACT NO. 93725



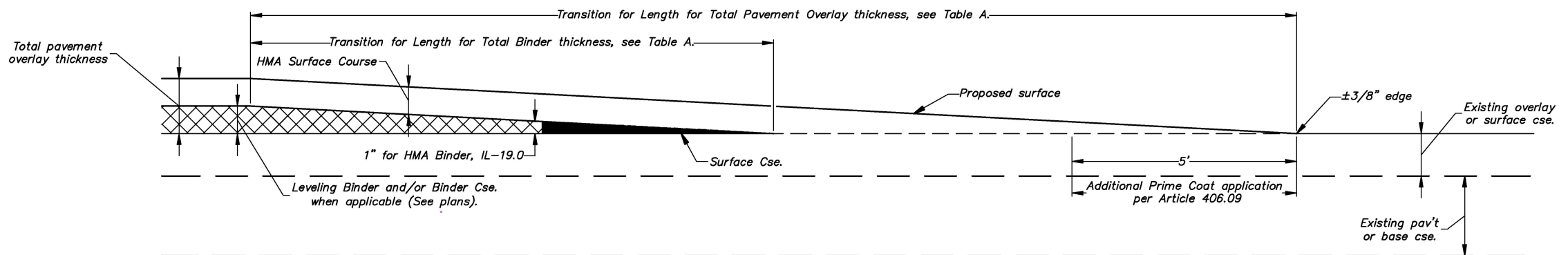
CASE 2: BUTT JOINT & SURFACE REMOVAL w/ RESURFACING



CASE 2A: BUTT JOINT & SURFACE REMOVAL w/ BINDER & RESURFACING



FEATHEREDGE APPROACH - SURFACE CSE



FEATHEREDGE APPROACH - SURFACE & BINDER CSE

USER NAME =	DESIGNED -	REVISED - 12/12/2017
PLOT SCALE = 1:20	DRAWN - JRF	REVISED -
PLOT DATE =	CHECKED -	REVISED -
	DATE - 1/14/2016	REVISED -

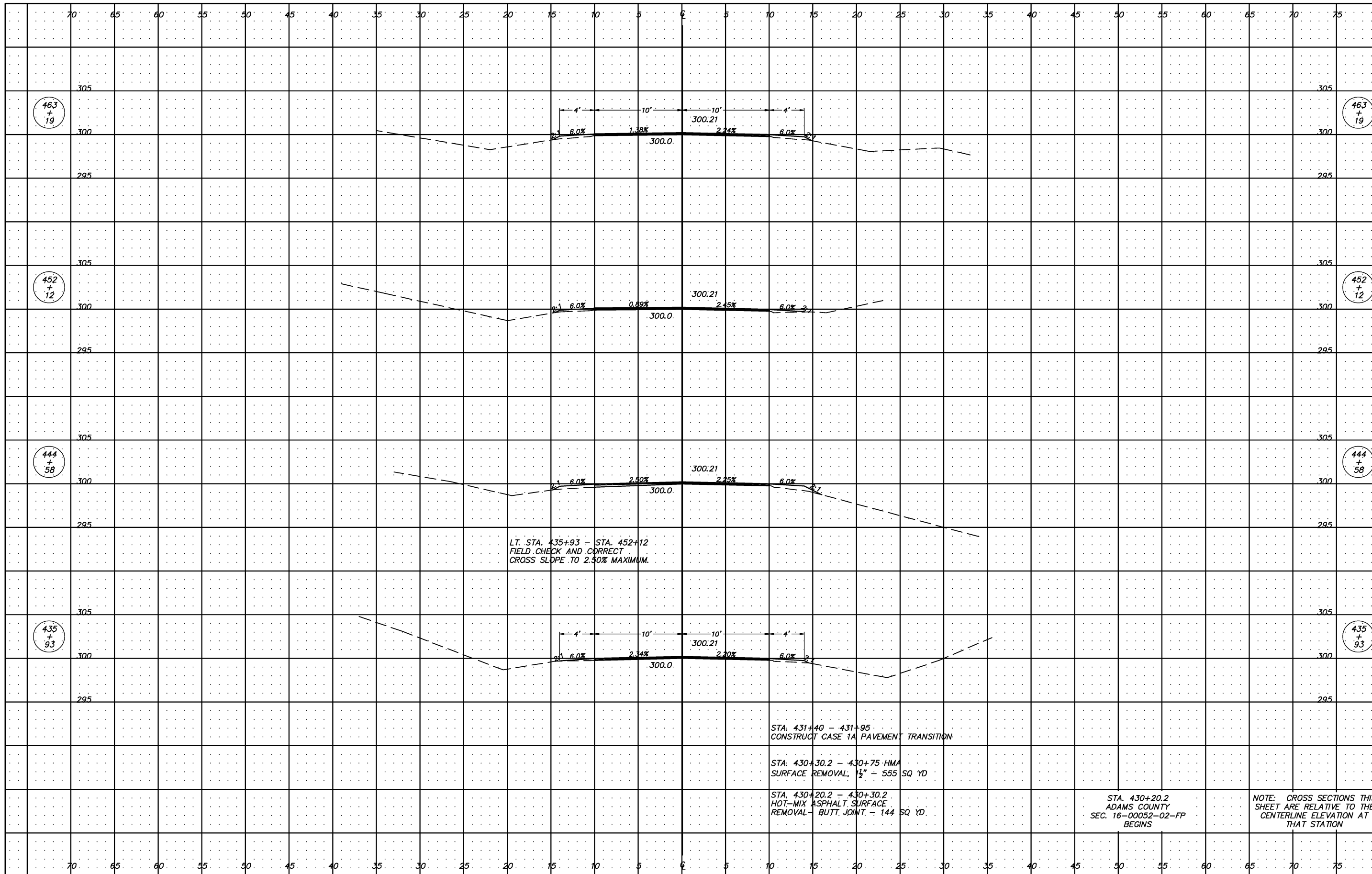
**ADAMS COUNTY
HIGHWAY DEPARTMENT**

**BUTT JOINTS
FEATHER EDGE TRANSITIONS**

SCALE: NONE SHEET 2 OF 2 SHEETS STA. -- TO STA. --

COUNTY	ROUTE	SECTION	TOTAL SHEETS	SHEET NO.
ADAMS	FAS 593	16-00052-02-FP	18	15

CONTRACT NO. 93725



USER NAME =
 PLOT SCALE = 1:5
 PLOT DATE =

DESIGNED -
 DRAWN -
 CHECKED -
 DATE -

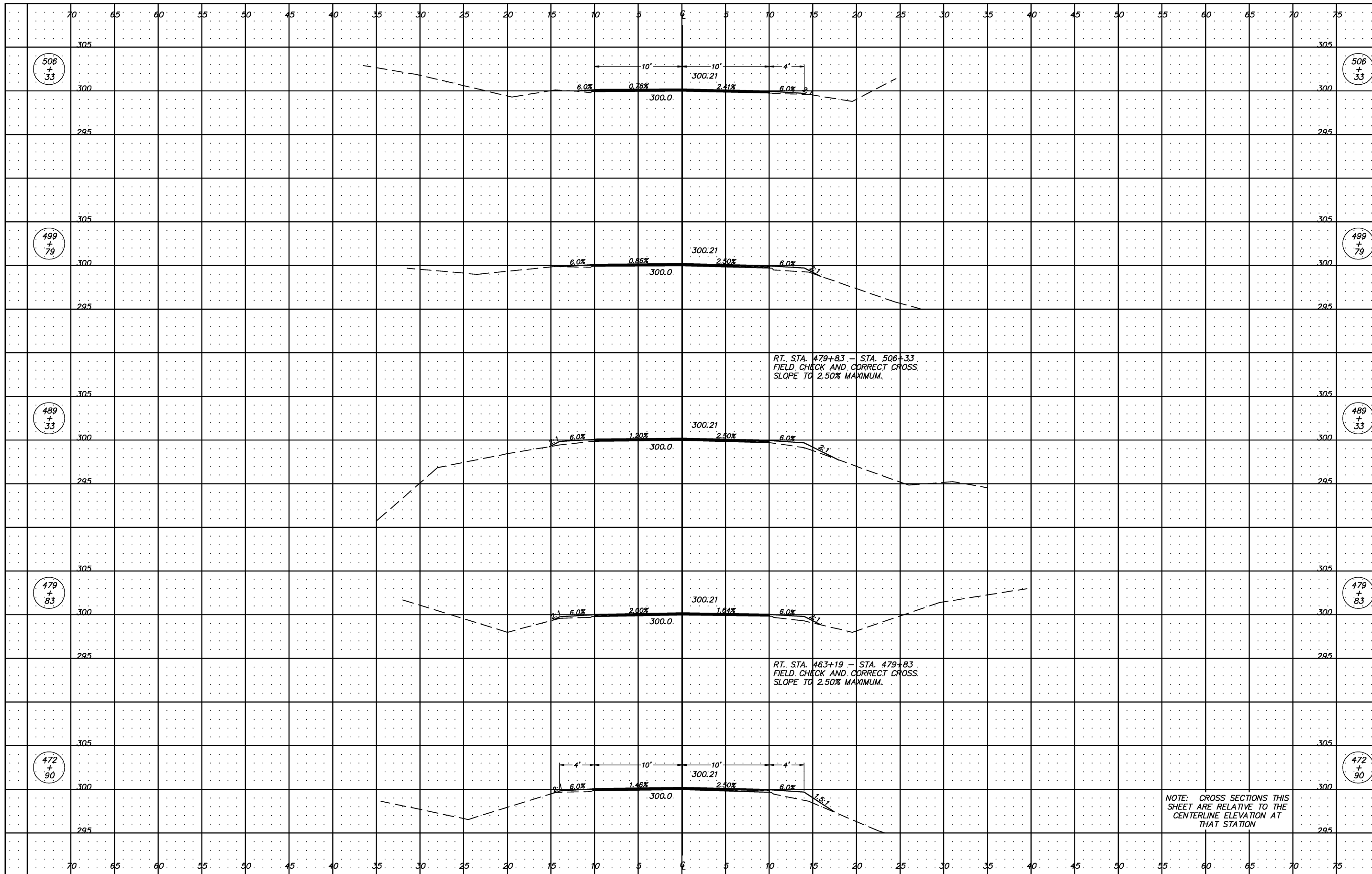
REVISED -
 REVISED -
 REVISED -
 REVISED -

**ADAMS COUNTY
 HIGHWAY DEPARTMENT**

**CROSS SECTIONS
 FAS ROUTE 593 (CO HWY 4)**
 SCALE 1" = 5' SHEET 1 OF 3 SHEETS STA. 435+93 TO STA. 463+19

COUNTY	ROUTE	SECTION	TOTAL SHEETS	SHEET NO.
ADAMS	FAS 593	16-00052-02-FP	18	16

CONTRACT NO. 93725



RT. STA. 479+83 - STA. 506+33
 FIELD CHECK AND CORRECT CROSS
 SLOPE TO 2.50% MAXIMUM.

RT. STA. 463+19 - STA. 479+83
 FIELD CHECK AND CORRECT CROSS
 SLOPE TO 2.50% MAXIMUM.

NOTE: CROSS SECTIONS THIS
 SHEET ARE RELATIVE TO THE
 CENTERLINE ELEVATION AT
 THAT STATION

USER NAME =
 PLOT SCALE = 1:5
 PLOT DATE =

DESIGNED -
 DRAWN -
 CHECKED -
 DATE -

REVISED -
 REVISED -
 REVISED -
 REVISED -

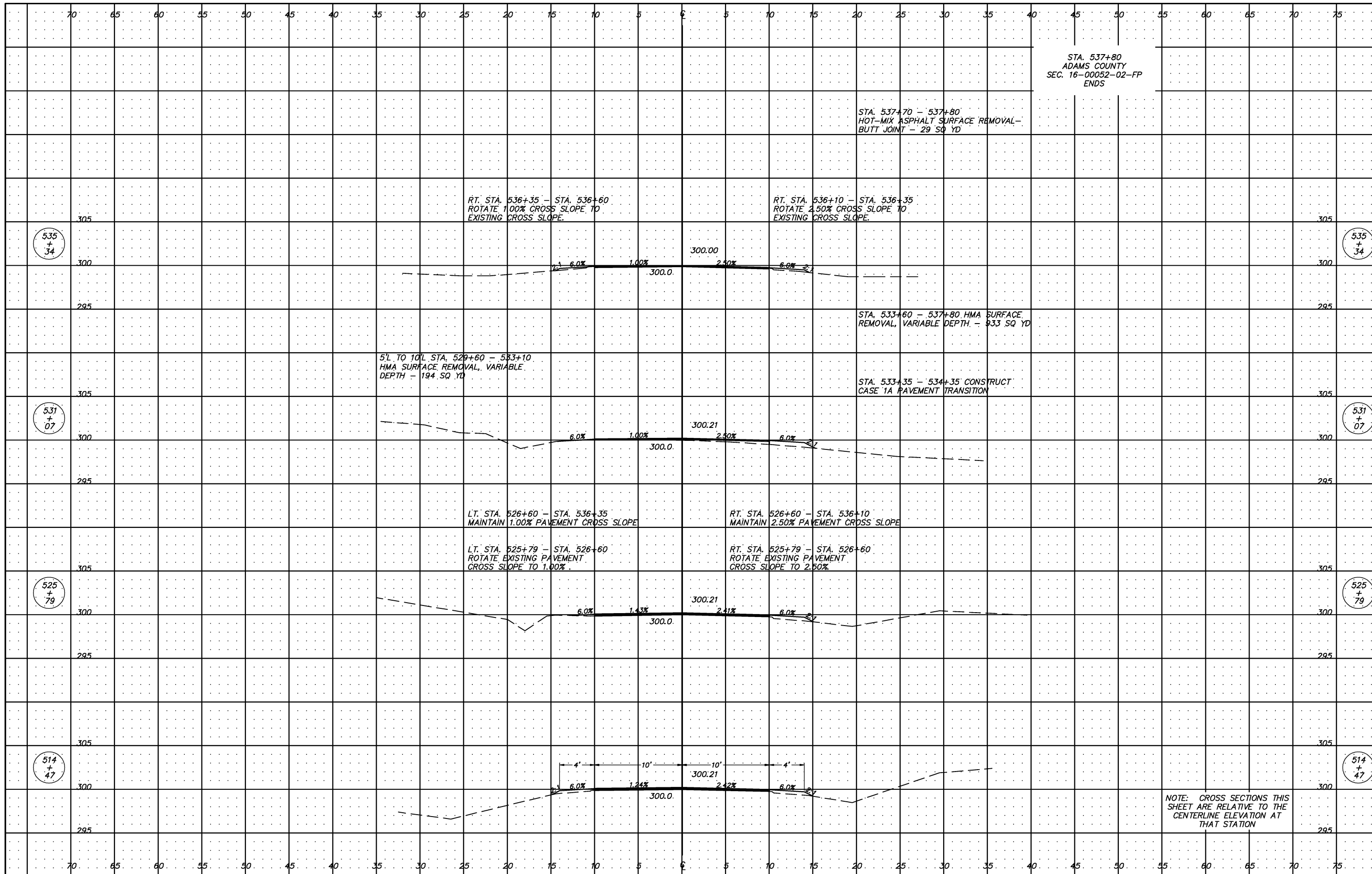
**ADAMS COUNTY
 HIGHWAY DEPARTMENT**

**CROSS SECTIONS
 FAS ROUTE 593 (CO HWY 4)**

SCALE 1" = 5' SHEET 2 OF 3 SHEETS STA. 472+90 TO STA. 506+33

COUNTY	ROUTE	SECTION	TOTAL SHEETS	SHEET NO.
ADAMS	FAS 593	16-00052-02-FP	18	17

CONTRACT NO. 93725



STA. 537+80
ADAMS COUNTY
SEC. 16-00052-02-FP
ENDS

STA. 537+70 - 537+80
HOT-MIX ASPHALT SURFACE REMOVAL -
BUTT JOINT - 29 SQ YD

RT. STA. 536+35 - STA. 536+60
ROTATE 1.00% CROSS SLOPE TO
EXISTING CROSS SLOPE.

RT. STA. 536+10 - STA. 536+35
ROTATE 2.50% CROSS SLOPE TO
EXISTING CROSS SLOPE.

STA. 533+60 - 537+80 HMA SURFACE
REMOVAL, VARIABLE DEPTH - 933 SQ YD

5' L. TO 10' L. STA. 529+60 - 533+10
HMA SURFACE REMOVAL, VARIABLE
DEPTH - 194 SQ YD

STA. 533+35 - 534+35 CONSTRUCT
CASE 1A PAVEMENT TRANSITION

LT. STA. 526+60 - STA. 536+35
MAINTAIN 1.00% PAVEMENT CROSS SLOPE

RT. STA. 526+60 - STA. 536+10
MAINTAIN 2.50% PAVEMENT CROSS SLOPE

LT. STA. 525+79 - STA. 526+60
ROTATE EXISTING PAVEMENT
CROSS SLOPE TO 1.00%.

RT. STA. 525+79 - STA. 526+60
ROTATE EXISTING PAVEMENT
CROSS SLOPE TO 2.50%.

NOTE: CROSS SECTIONS THIS
SHEET ARE RELATIVE TO THE
CENTERLINE ELEVATION AT
THAT STATION

USER NAME =
PLOT SCALE = 1:5
PLOT DATE =

DESIGNED -
DRAWN -
CHECKED -
DATE -

REVISED -
REVISED -
REVISED -
REVISED -

**ADAMS COUNTY
HIGHWAY DEPARTMENT**

**CROSS SECTIONS
FAS ROUTE 593 (CO HWY 4)**

SCALE 1" = 5'

SHEET 3 OF 3 SHEETS

STA. 514+47 TO STA. 535+34

COUNTY	ROUTE	SECTION	TOTAL SHEETS	SHEET NO.
ADAMS	FAS 593	16-00052-02-FP	18	18

CONTRACT NO. 93725