



04-26-2019 LETTING ITEM 122

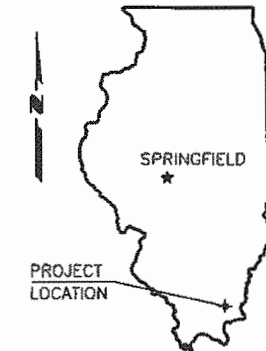
STATE OF ILLINOIS
DEPARTMENT OF TRANSPORTATION
PLANS FOR PROPOSED

SURFACE TRANSPORTATION PROGRAM
OFF SYSTEM BRIDGE

COUNTY HIGHWAY 5 (DENEAL ROAD)
SECTION 13-00155-00-BR
PROJECT NO. X9JX(838)
JOB NO. C-99-513-14
DENEAL BRANCH

SALINE COUNTY

ROUTE	SECTION	COUNTY	TOTAL SHEETS	SHEET NO.
CH 5	13-00155-00-BR	SALINE	12	1
PROJECT NO. X9JX(838)			CONTRACT NO. 99575	



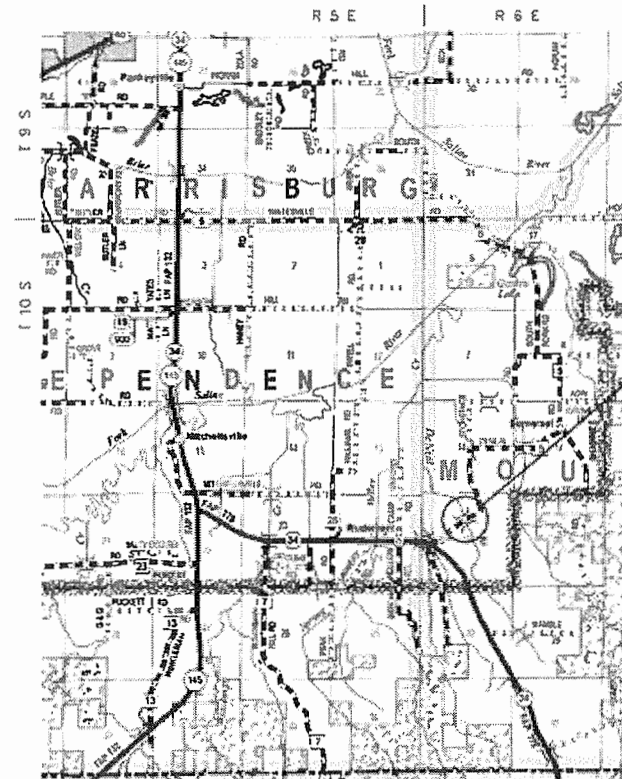
SUMMARY OF QUANTITIES

CODE NO.	PAY ITEM	UNIT	TOTAL
• X2501000	SEEDING, CLASS 2 (SPECIAL)	ACRE	0.1
• Z0065000	SETTING PILES IN ROCK	EACH	4
20200100	EARTH EXCAVATION	CU YD	117
• 20300100	CHANNEL EXCAVATION	CU YD	208
25100630	EROSION CONTROL BLANKET	SQ YD	277
• 28100807	STONE DUMPED RIPRAP, CLASS A4	TON	225
• 40200800	AGGREGATE SURFACE COURSE, TYPE B	TON	98
50100100	REMOVAL OF EXISTING STRUCTURES	EACH	1
50105220	PIPE CULVERT REMOVAL	FOOT	26
50200100	STRUCTURE EXCAVATION	CU YD	67
50300225	CONCRETE STRUCTURES	CU YD	19
50300280	CONCRETE ENCASEMENT	CU YD	2.7
50400405	PRECAST PRESTRESSED CONCRETE DECK BEAMS (21" DEPTH)	SQ FT	1,332
50800105	REINFORCEMENT BARS	POUND	2,282
Δ 50900205	STEEL RAILING, TYPE S1	FOOT	112
51201400	FURNISHING STEEL PILES HP10X42	FOOT	156
51202305	DRIVING PILES	FOOT	96
51204650	PILE SHOES	EACH	4
51500100	NAME PLATES	EACH	1
59300100	CONTROLLED LOW-STRENGTH MATERIAL	CU YD	13.2
Δ 72501000	TERMINAL MARKER - DIRECT APPLIED	EACH	4
67100100	MOBILIZATION	L SUM	1

• SEE SPECIAL PROVISIONS
Δ SPECIALTY ITEMS

INDEX OF SHEETS

1. COVER SHEET
 2. PLAN & PROFILE
 3. GENERAL PLAN & ELEVATION
 4. 21" X 36" PPC DECK BEAM
 5. 21" X 36" PPC DECK BEAM DETAILS
 6. 21" X 48" PPC DECK BEAM
 7. 21" X 48" PPC DECK BEAM DETAILS
 8. ABUTMENT
 9. STEEL RAILING, TYPE S-1
 10. NAME PLATE
 11. PILE DETAILS
 12. CROSS SECTIONS
- STANDARDS 000001-07 STD SYMBOLS, ABBREVIATIONS & PATTERNS
280001-07 TEMPORARY EROSION CONTROL SYSTEMS
701901-08 TRAFFIC CONTROL DEVICES
725001-01 OBJECT AND TERMINAL MARKERS
BLR 21-9 TYP APPLICATION OF TRAF CONTR DEVICES



LOCATION MAP

SCALE: 1" = 2 MILES

NET LENGTH OF IMPROVEMENT = 150.00 FT. = 0.0284 MILES

CLASSIFICATION : LOCAL ROAD (RURAL)
ADT : 125
DESIGN SPEED : 30 MPH

CONTRACT NO. 99575



Kevin Phillips
Kevin Phillips
PROFESSIONAL ENGINEER
#062-047293
EXPIRES NOV. 30, 2019

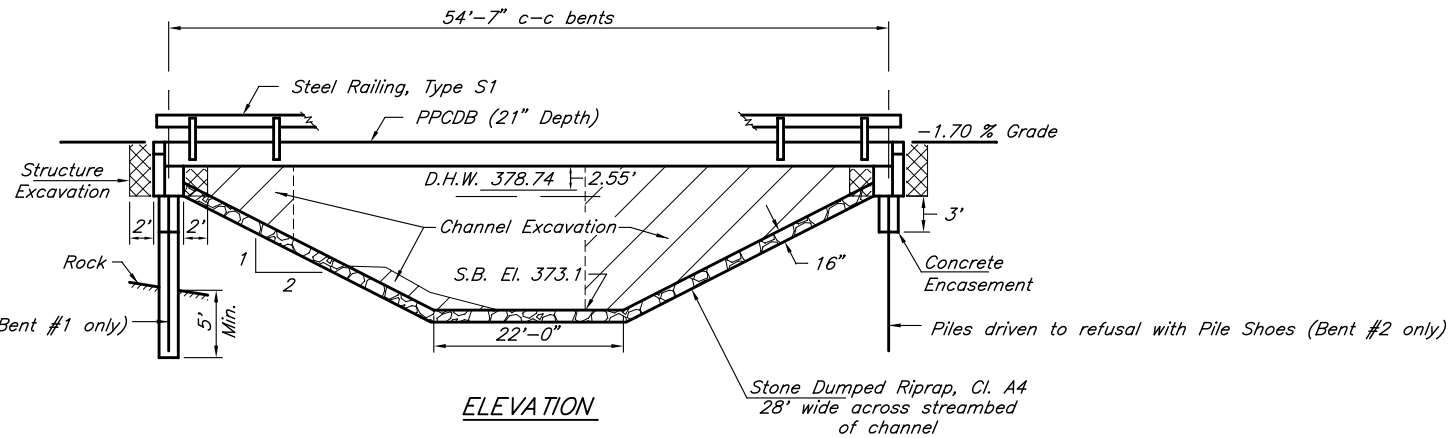
Round Table Design, Inc.
PROFESSIONAL ENGINEERING - LAND SURVEYING
1457 HIGHWAY 145 S HARRISBURG, IL (818) 253-6017

ILLINOIS DEPARTMENT OF TRANSPORTATION	
Approved	01-23-19 <i>[Signature]</i> Saline County Engineer
Passed	January 30, 2019 <i>[Signature]</i> District Engineer of Local Roads and Streets
Releasing for Bid Based on Limited Review	January 30, 2019 <i>Keith Roberts</i> Keith Roberts, P.E. Acting Region Five Engineer

2160070 Cover 01/24/19 1014 RLM

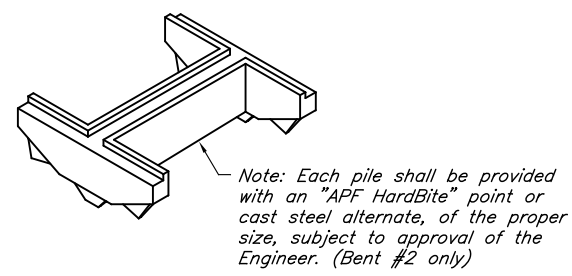
Existing Structure - Single span timber deck with steel stringers on closed concrete abutments. 18.5' W x 30.0' L

ROUTE	SECTION	COUNTY	TOTAL SHEETS	SHEET NO.
CH 5	13-00155-00-BR	SALINE	12	3
PROJECT NO. X9JX(838)			CONTRACT NO. 99575	

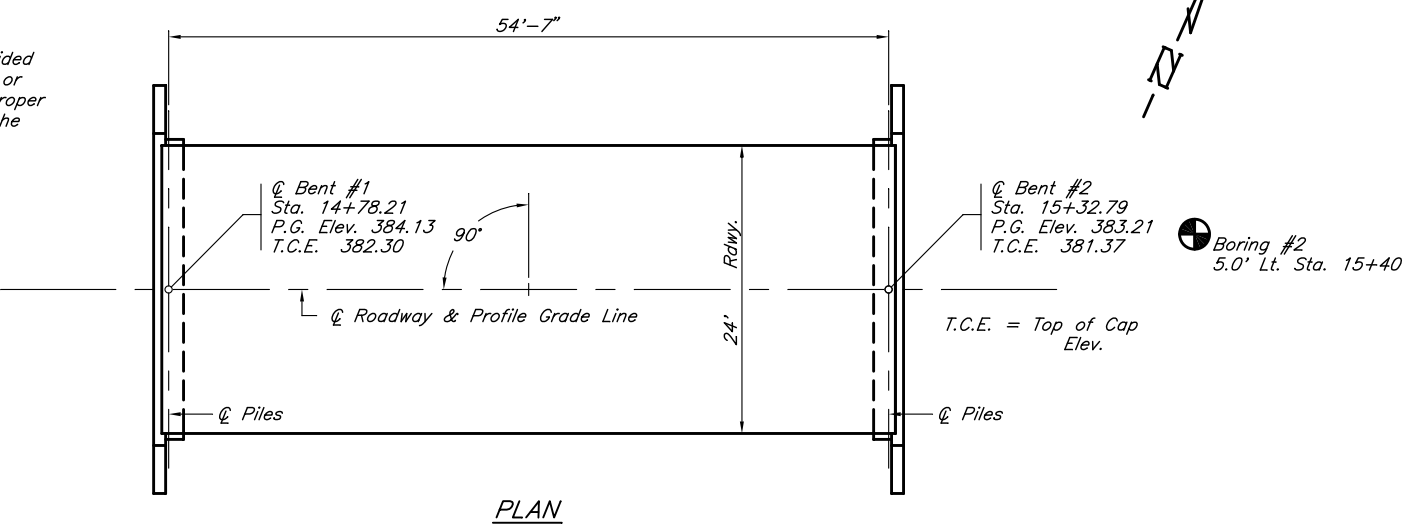


GENERAL NOTES

1. Steel H piles shall meet AASHTO M270 Grade 50 specifications.
2. See special provisions for boring logs.
3. A Corrosion inhibitor, as covered in the Standard Specifications, shall be used in the precast prestressed concrete deck beams.



PILE SHOES



TOTAL BILL OF MATERIAL

Item	Unit	Super	Sub.		Total
			Piers	Abuts.	
Channel Excavation	Cu. Yds.			208	208
Stone Dumped Riprap, Cl. A4	Tons			163	163
Removal of Existing Structures	Each	1		1	1
Structure Excavation	Cu. Yds.			67	67
Concrete Structures	Cu. Yds.			19.0	19.0
Concrete Encasement	Cu. Yds.			2.7	2.7
P.P. Conc. Dk. Bm. 21" Dp.	Sq. Ft.	1,332			1,332
Reinforcement Bars	Pound			2,282	2,282
Steel Railing, Type S1	Foot	112			112
Furnishing Steel Piles HP10x42	Foot			156	156
Driving Piles	Foot			96	96
Setting Piles in Rock	Each			4	4
Pile Shoes	Each			4	4
Name Plates	Each			1	1

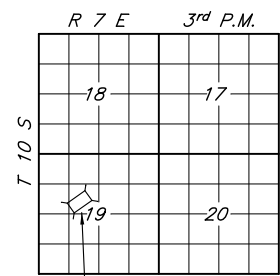
PILE DATA (2-ABUTS.)

Type & Size : HP10x42
 Nominal Required Bearing : 270 kips
 Factored Resistance Available : Refusal
 Estimated Length : 15' Bent #1, 24' Bent #2
 Number Required : 8

DENEAL BRANCH
 SEC. 13-00155-00-BR BUILT 20__
 SALINE COUNTY
 LOADING HL-93
 STR. NO. 083-3249

LETTERING FOR NAME PLATE

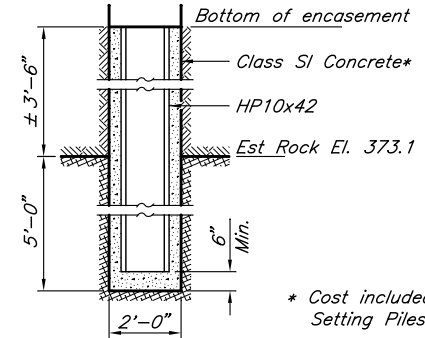
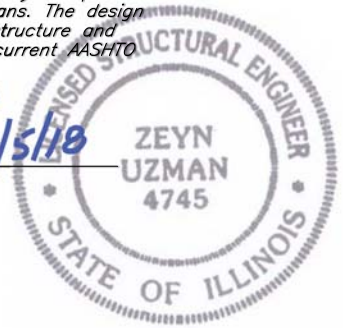
Locate Name Plate at southwest Corner of Bridge (See Sheet 10)



LOCATION SKETCH

I certify that to the best of my knowledge, information and belief, this bridge design is structurally adequate for the design loading shown on the plans. The design is an economical one for the type of structure and complies with the requirements of the current AASHTO LRFD Specifications.

Zeyn B. Uzman
 6/5/18
 S.E. #81-4745
 Expires Nov. 30, 2020



* Cost included in Setting Piles in Rock

SETTING PILES IN ROCK
 (Typical - Bent #1 only)

DESIGN SPECIFICATIONS

2014 AASHTO LRFD Bridge Design Specifications and all applicable interims.

LOADING HL-93

Allow 50#/sq. ft. for future wearing surface

SEISMIC DATA

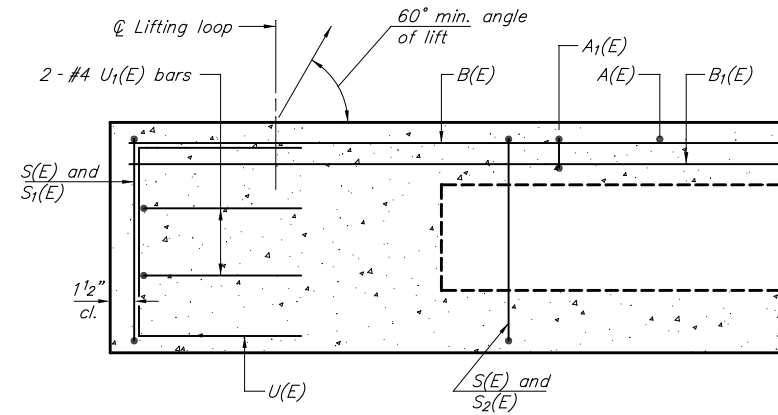
Soil Site Class = C
 Design Spectral Acceleration at 0.2 sec. (S_{DS}) = 0.716
 Design Spectral Acceleration at 1.0 sec. (S_{D1}) = 0.258
 Seismic Performance Zone (SPZ) = 2

WATERWAY INFORMATION

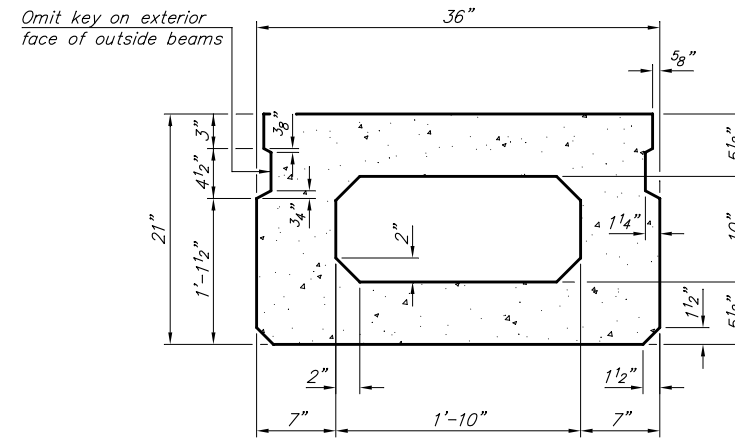
Drainage Area = 1.38 Sq. Mi.		Low Grade Elev. = 380.35		At Sta. 17+50		
Flood	Freq. Yr.	Q C.F.S.	Opening Sq. Ft. Exist. Prop.	Natural H.W.E.	Head-Ft. Exist. Prop.	Headwater El. Exist. Prop.
Ex. Overtop	15	1289	135.9 181.5	378.59	1.39 0.17	379.98 378.76
Design	20	1420	139.9 188.1	378.74	1.60 0.20	380.34 378.94
Overtopping	±44	1833	152.7 209.6	379.21	1.69 1.95	380.90 381.16
Base	100	2270	156.5 216.1	379.35	2.64 1.96	381.99 381.31
Over Road Flow (Sq Ft):			Exist. Prop.	$Q_{(20)}$ 42.2	$Q_{(44)}$ 128.3	$Q_{(100)}$ 412.5 222.5

GENERAL PLAN & ELEVATION
 COUNTY HIGHWAY 5 (DENEAL ROAD)
 DENEAL BRANCH
 SECTION 13-00155-00-BR
 SALINE COUNTY
 STRUCTURE NO. 083-3249

ROUTE	SECTION	COUNTY	TOTAL SHEETS	SHEET NO.
CH 5	13-00155-00-BR	SALINE	12	4
PROJECT NO. X9JX(838)			CONTRACT NO. 99575	

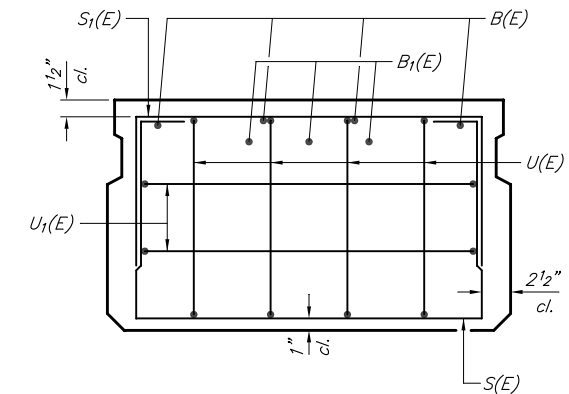


SECTION A-A

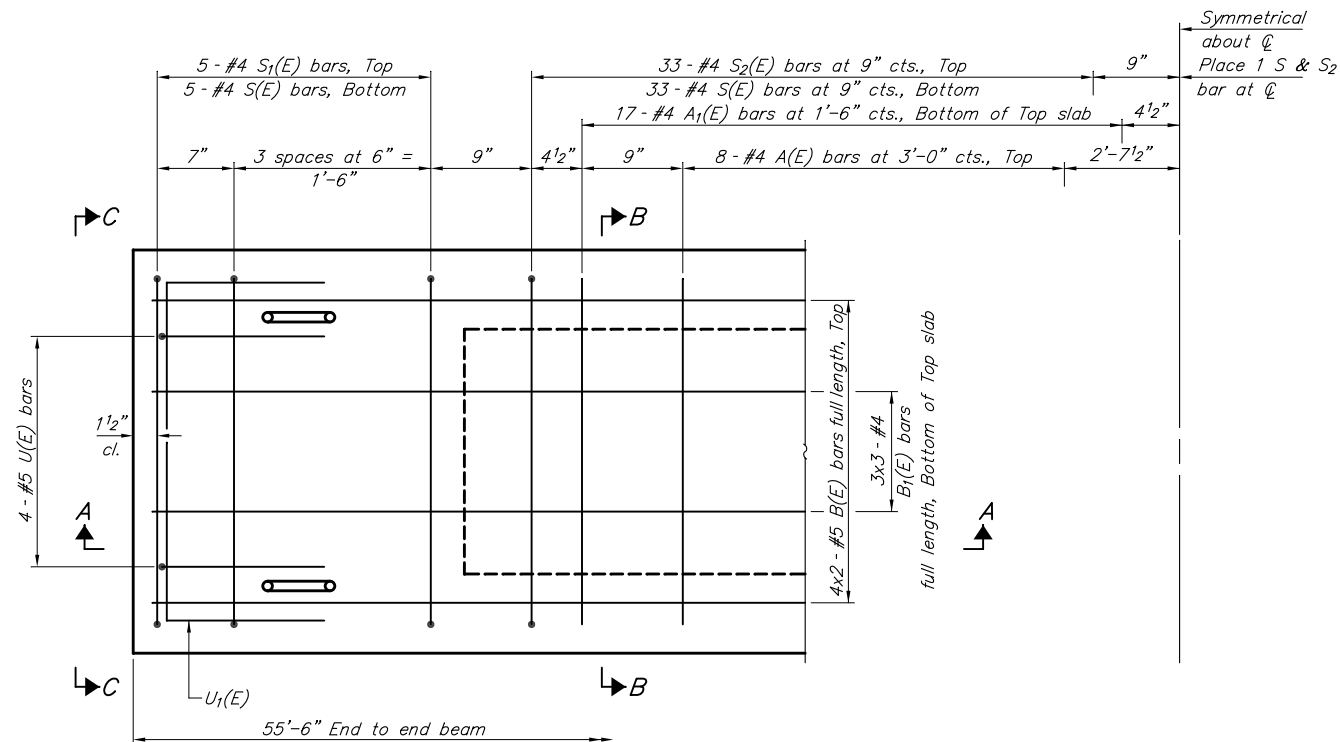


SECTION B-B

(Showing dimensions)

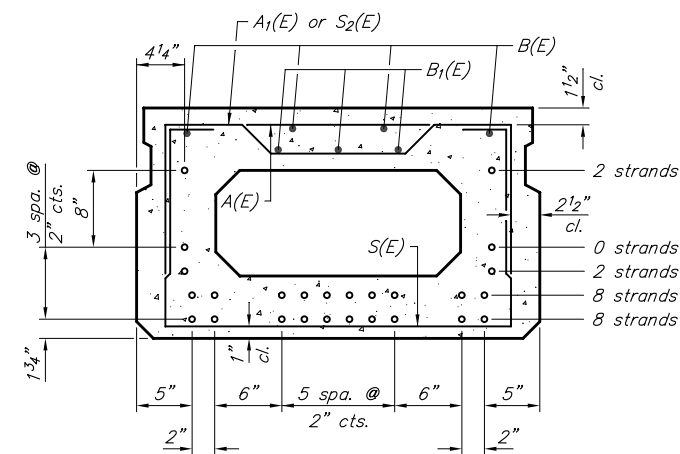


VIEW C-C



PLAN VIEW

Note: Spacing of S(E) and S2(E) bars may be adjusted up to 4" in the immediate area of the transverse tie diaphragms to miss the block outs for the transverse ties.



SECTION B-B

(Showing reinforcement and permissible strand locations)

Note: Place the number of strands specified in each row symmetrically about the centerline of beam in the permissible strand locations shown.

BAR LIST
ONE BEAM ONLY
(For information only)

Bar	No.	Size	Length	Shape
A(E)	16	#4	2'-7"	—
A1(E)	34	#4	2'-10"	~
B(E)	8	#5	28'-11"	—
B1(E)	9	#4	19'-9"	—
S(E)	77	#4	6'-5"	□
S1(E)	10	#4	4'-11"	□
S2(E)	67	#4	5'-2"	□
U(E)	8	#5	4'-0"	□
U1(E)	4	#4	5'-0"	□

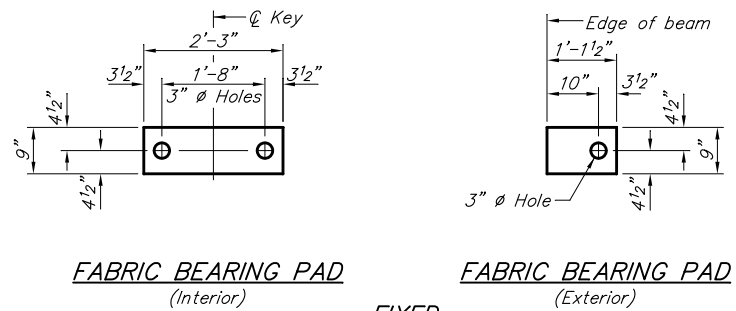
Notes:
See sheet 5 of 12 for additional details and Bill of Materials.
Bars noted thus 4x2-#5 etc. indicates 4 lines of bars with 2 lengths per line.

MINIMUM BAR LAP

#4 bar = 1'-11"
#5 bar = 2'-6"

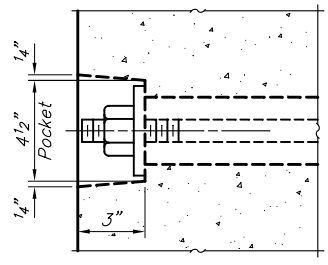
21" X 36" PPC DECK BEAM
COUNTY HIGHWAY 5 (DENEAL ROAD)
DENEAL BRANCH
SECTION 13-00155-00-BR
SALINE COUNTY
STRUCTURE NO. 083-3249

ROUTE	SECTION	COUNTY	TOTAL SHEETS	SHEET NO.
CH 5	13-00155-00-BR	SALINE	12	5
PROJECT NO. X9JX(838)			CONTRACT NO. 99575	

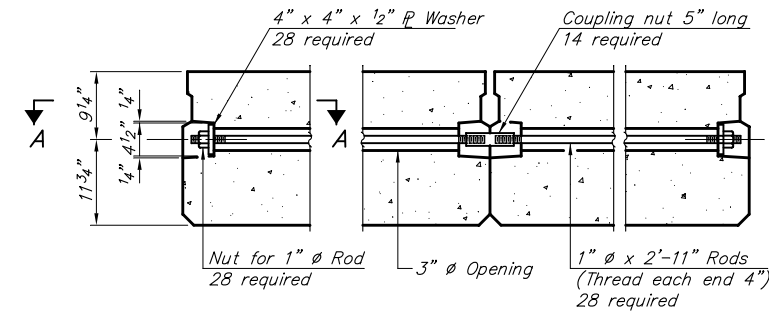


FABRIC BEARING PAD
(Interior) **FABRIC BEARING PAD**
(Exterior)

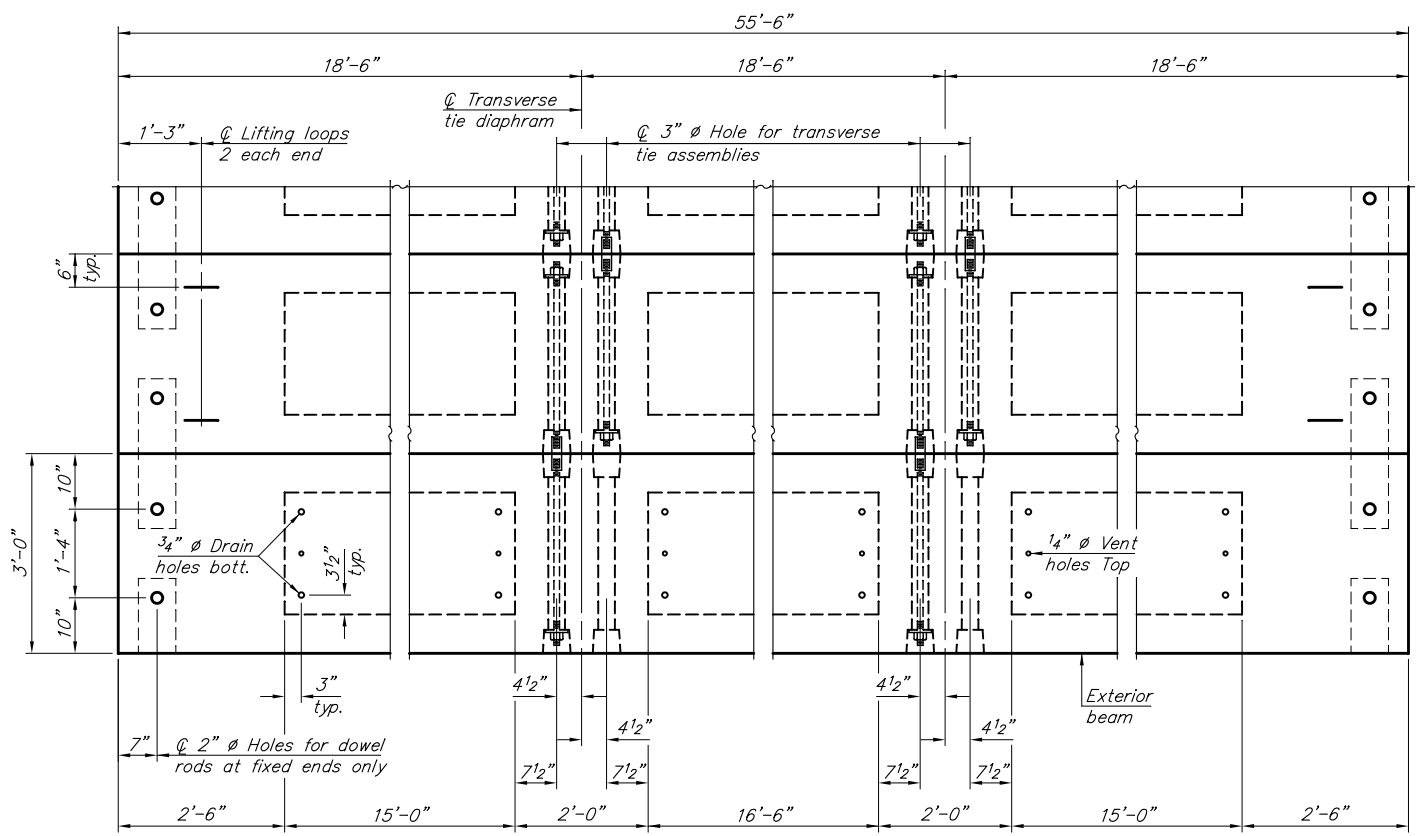
Notes:
All bearing pads shall be 1" thick.
Omit holes when using expansion bearings.
Expansion bearing pads shall be bonded to the substructure.



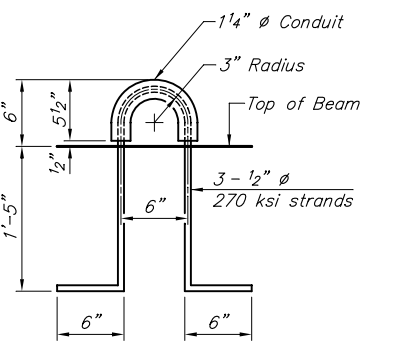
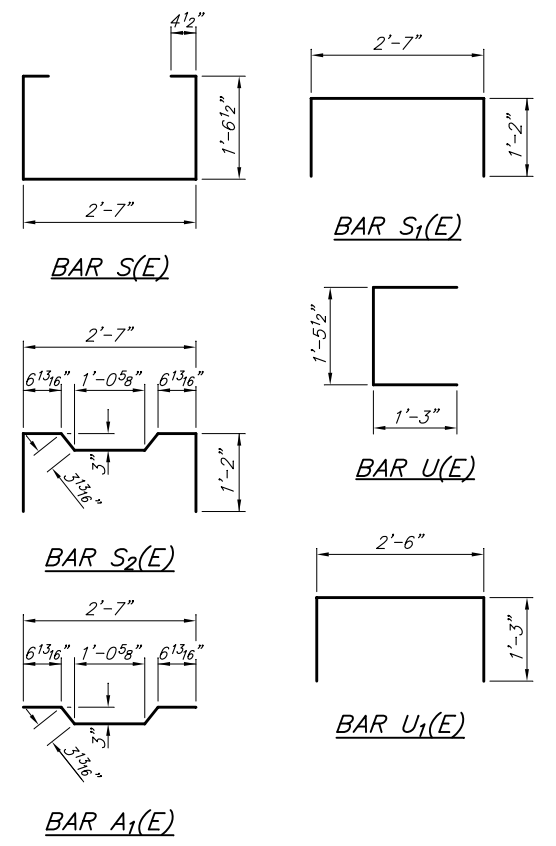
SECTION A-A



TYPICAL TRANSVERSE TIE ASSEMBLY



PLAN VIEW

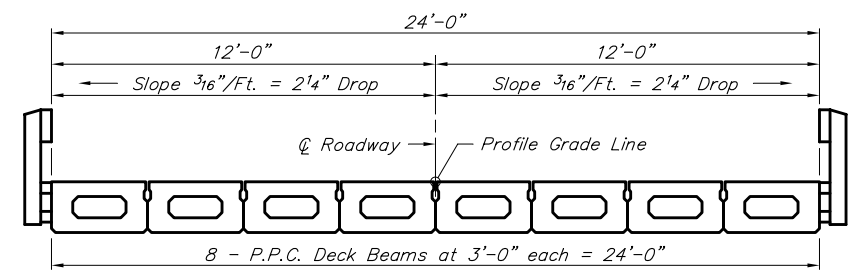


LIFTING LOOP DETAIL

Note: Connect beams in pairs with the transverse tie configuration shown.

NOTES

Prestressing steel shall be uncoated high strength, low relaxation 7-wire strand, Grade 270. The nominal diameter shall be 1/2" and the nominal cross-sectional area shall be 0.153 sq. in. The 1" diameter rods in the transverse tie assembly shall be tightened to a snug fit and the threads set. Pockets on exterior faces of bridge shall be filled with grout after transverse tie assembly is in place. Two 1/8" fabric adjusting shims of the dimensions of the exterior bearing pad shall be provided for each bearing pad location. A minimum 2 1/2" diameter lifting pin shall be used to engage the lifting loops during handling. Corrosion Inhibitor, per Article 1020.05(b)(10) and 1021.07 of the Standard Specifications, shall be used in the concrete for precast prestressed concrete deck beams. Compressive strength of prestressed concrete, f_c , shall be 6000 psi. Compressive strength of prestressed concrete at release, f_{ci} , shall be 5000 psi.



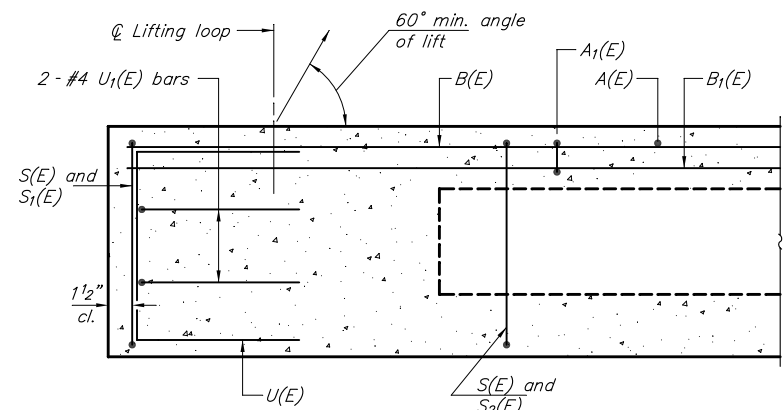
CROSS SECTION

BILL OF MATERIAL

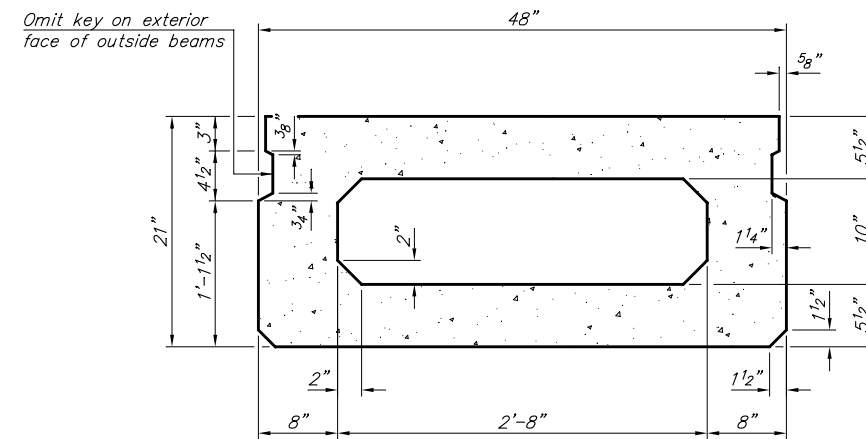
Precast Prestressed Concrete Deck Beams (21" depth)	Sq. Ft.	1,332
---	---------	-------

21" X 36" PPC DECK BEAM DETAILS
COUNTY HIGHWAY 5 (DENEAL ROAD)
DENEAL BRANCH
SECTION 13-00155-00-BR
SALINE COUNTY
STRUCTURE NO. 083-3249

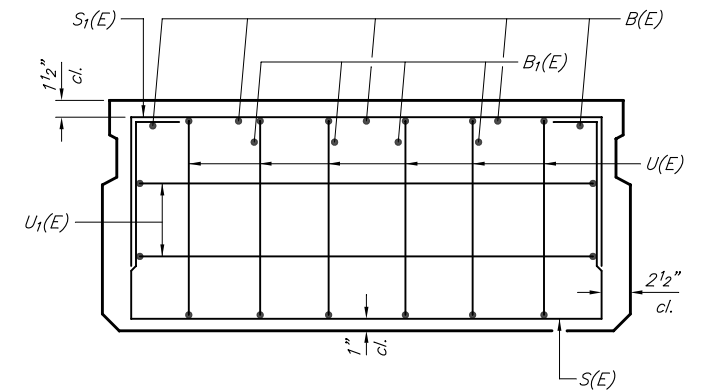
ROUTE	SECTION	COUNTY	TOTAL SHEETS	SHEET NO.
CH 5	13-00155-00-BR	SALINE	12	6
PROJECT NO. X9JX(838)			CONTRACT NO. 99575	



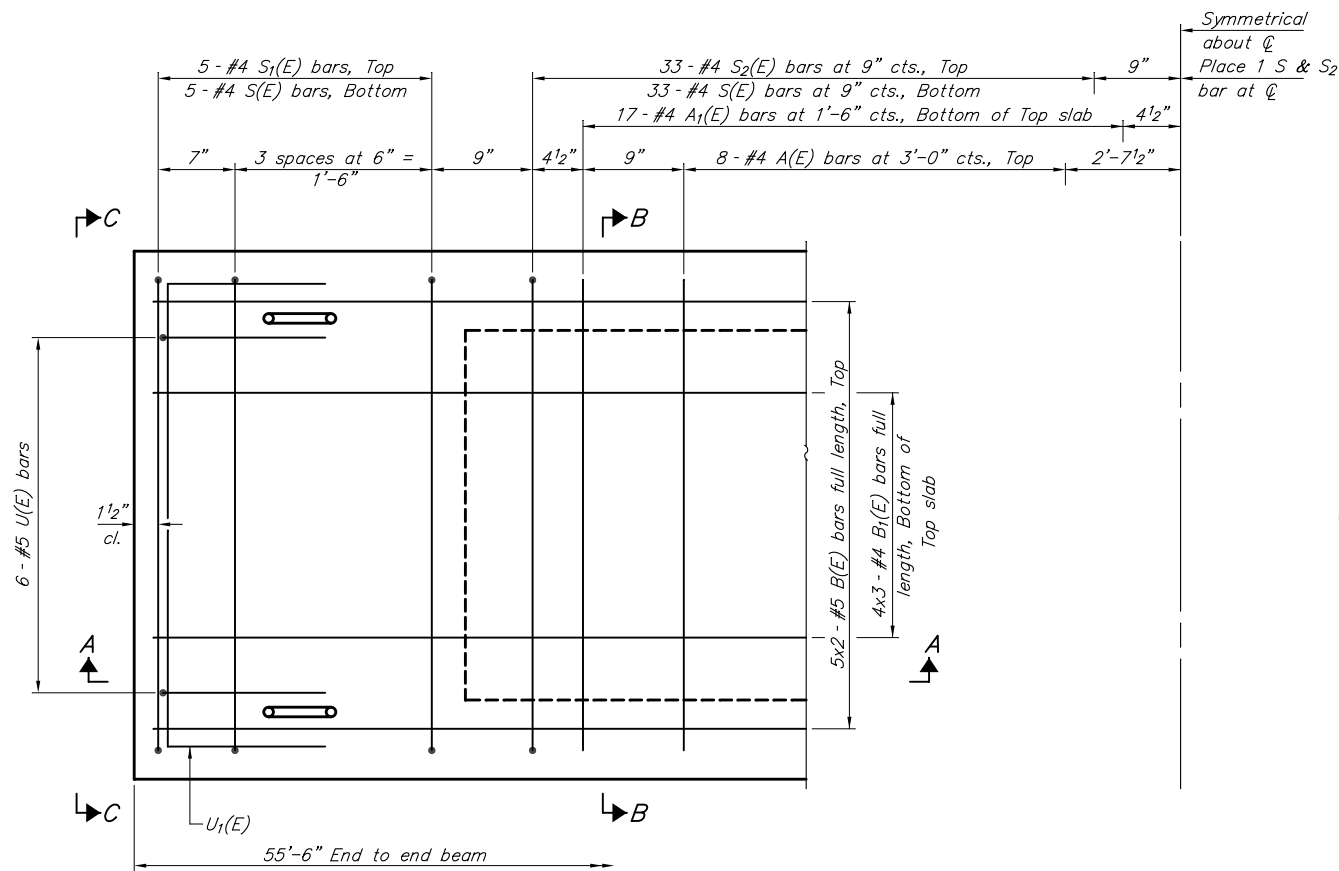
SECTION A-A



SECTION B-B
(Showing dimensions)



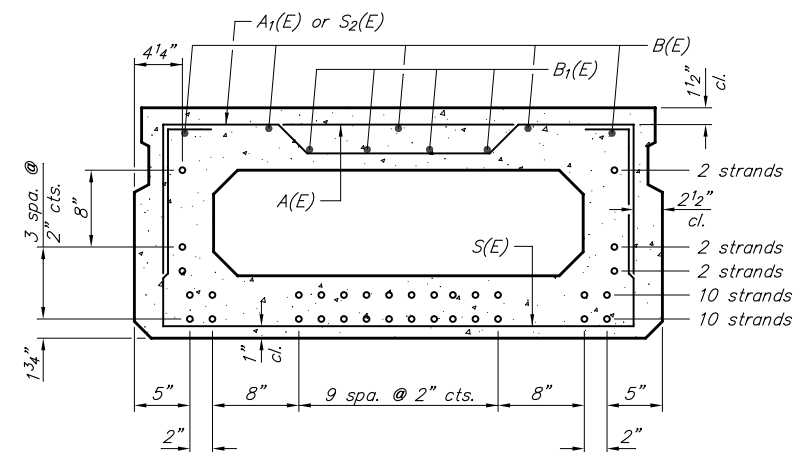
VIEW C-C



PLAN VIEW

Note: Spacing of S(E) and S2(E) bars may be adjusted up to 4" in the immediate area of the transverse tie diaphragms to miss the block outs for the transverse ties.

Symmetrical about \bar{C}
Place 1 S & S2 bar at \bar{C}



SECTION B-B

(Showing reinforcement and permissible strand locations)

Note: Place the number of strands specified in each row symmetrically about the centerline of beam in the permissible strand locations shown.

BAR LIST
ONE BEAM ONLY
(For information only)

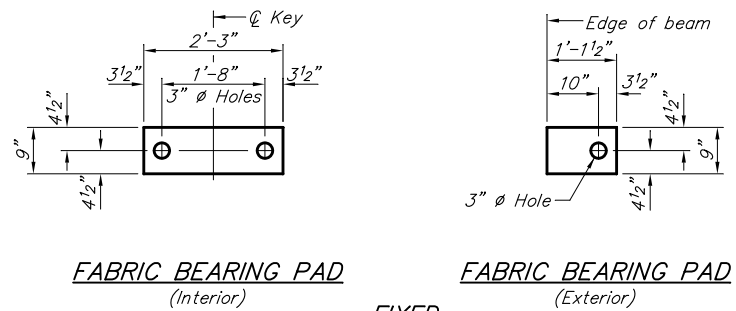
Bar	No.	Size	Length	Shape
A(E)	16	#4	3'-7"	—
A1(E)	34	#4	3'-10"	~
B(E)	10	#5	28'-11"	—
B1(E)	12	#4	19'-9"	—
S(E)	77	#4	7'-5"	□
S1(E)	10	#4	5'-11"	□
S2(E)	67	#4	6'-2"	□
U(E)	12	#5	4'-0"	□
U1(E)	4	#4	6'-0"	□

Notes:
See sheet 7 of 12 for additional details and Bill of Materials.
Bars noted thus 4x2-#5 etc. indicates 4 lines of bars with 2 lengths per line.

MINIMUM BAR LAP
#4 bar = 1'-11"
#5 bar = 2'-6"

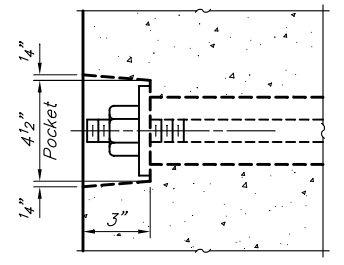
21" X 48" PPC DECK BEAM
COUNTY HIGHWAY 5 (DENEAL ROAD)
DENEAL BRANCH
SECTION 13-00155-00-BR
SALINE COUNTY
STRUCTURE NO. 083-3249

ROUTE	SECTION	COUNTY	TOTAL SHEETS	SHEET NO.
CH 5	13-00155-00-BR	SALINE	12	7
PROJECT NO. X9JX(838)			CONTRACT NO. 99575	

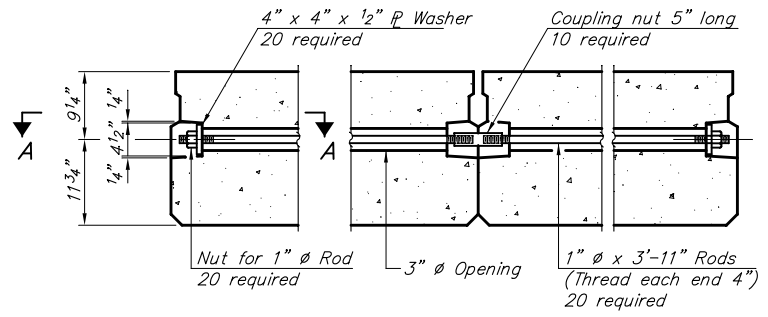


FABRIC BEARING PAD
(Interior) **FABRIC BEARING PAD**
(Exterior)

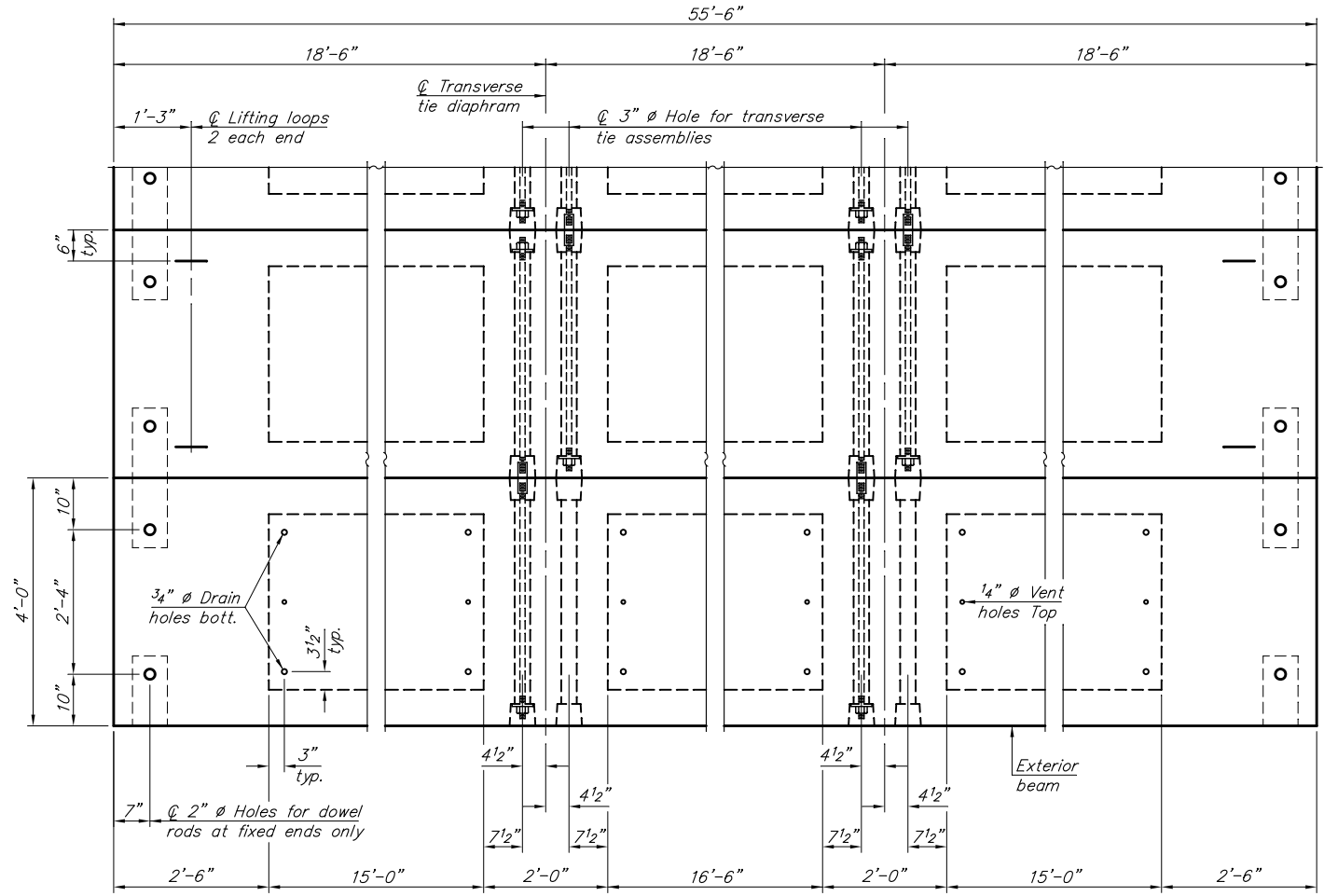
Notes:
All bearing pads shall be 1" thick.
Omit holes when using expansion bearings.
Expansion bearing pads shall be bonded to the substructure.



SECTION A-A

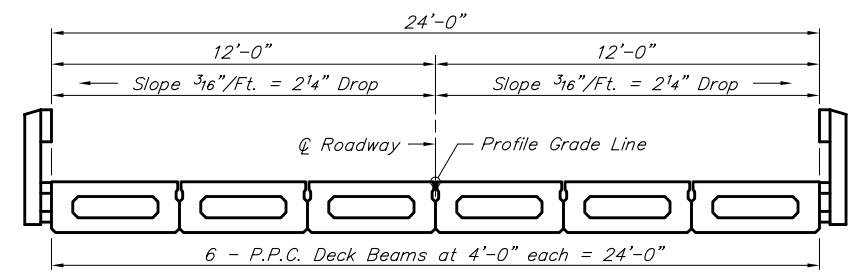


TYPICAL TRANSVERSE TIE ASSEMBLY



PLAN VIEW

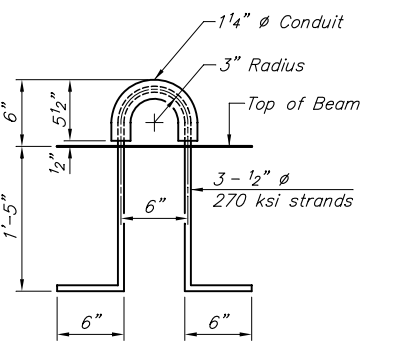
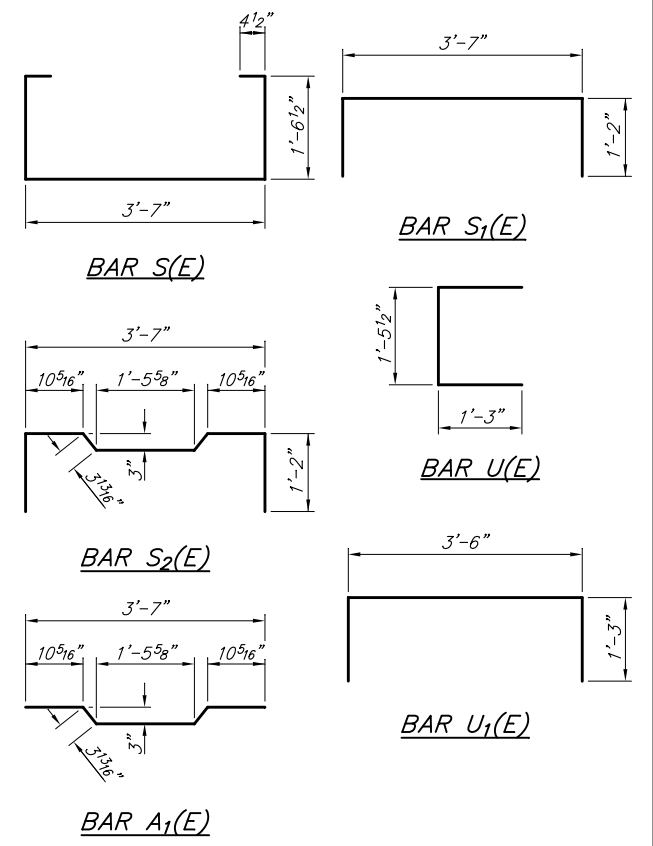
Note: Connect beams in pairs with the transverse tie configuration shown.



CROSS SECTION

NOTES

Prestressing steel shall be uncoated high strength, low relaxation 7-wire strand, Grade 270. The nominal diameter shall be 1/2" and the nominal cross-sectional area shall be 0.153 sq. in. The 1" rods in the transverse tie assembly shall be tightened to a snug fit and the threads set. Pockets on exterior faces of bridge shall be filled with grout after transverse tie assembly is in place. Two 1/8" fabric adjusting shims of the dimensions of the exterior bearing pad shall be provided for each bearing pad location. A minimum 2 1/2" diameter lifting pin shall be used to engage the lifting loops during handling. Corrosion Inhibitor, per Article 1020.05(b)(10) and 1021.07 of the Standard Specifications, shall be used in the concrete for precast prestressed concrete deck beams. Compressive strength of prestressed concrete, f'c, shall be 6000 psi. Compressive strength of prestressed concrete at release, f'ci, shall be 5000 psi.



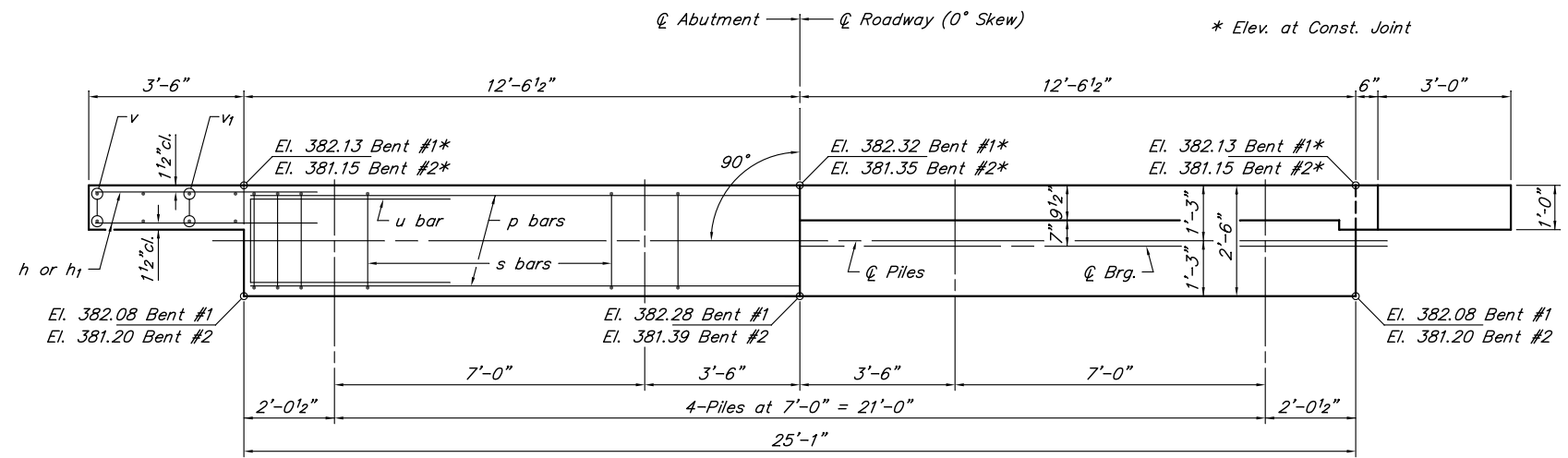
LIFTING LOOP DETAIL

BILL OF MATERIAL

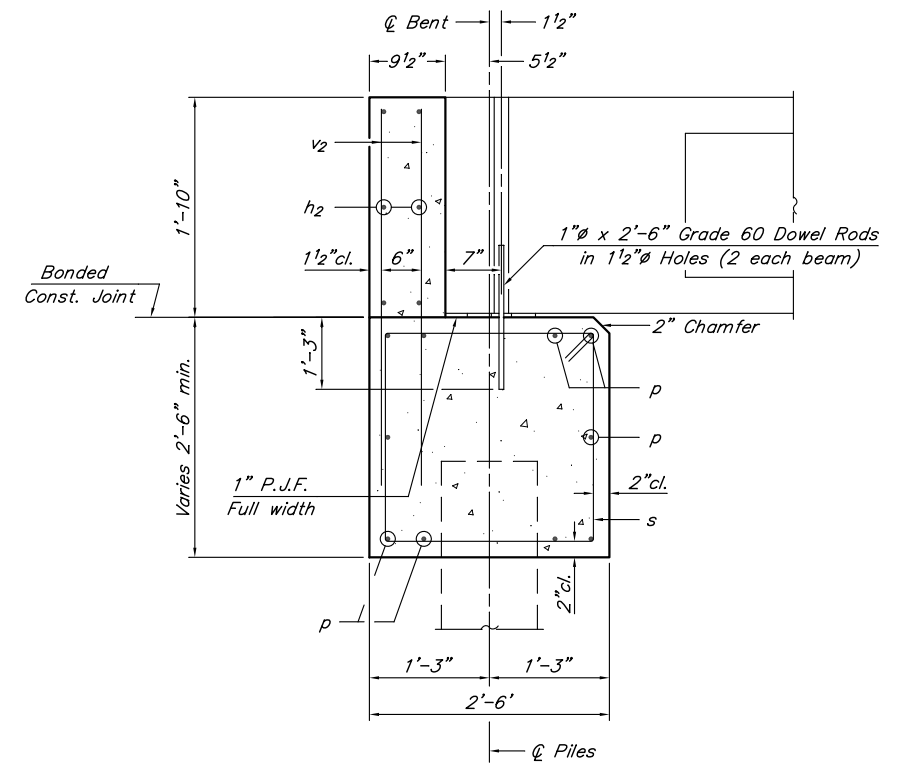
Precast Prestressed Concrete Deck Beams (21" depth)	Sq. Ft.	1,332
---	---------	-------

21" X 48" PPC DECK BEAM DETAILS
COUNTY HIGHWAY 5 (DENEAL ROAD)
DENEAL BRANCH
SECTION 13-00155-00-BR
SALINE COUNTY
STRUCTURE NO. 083-3249

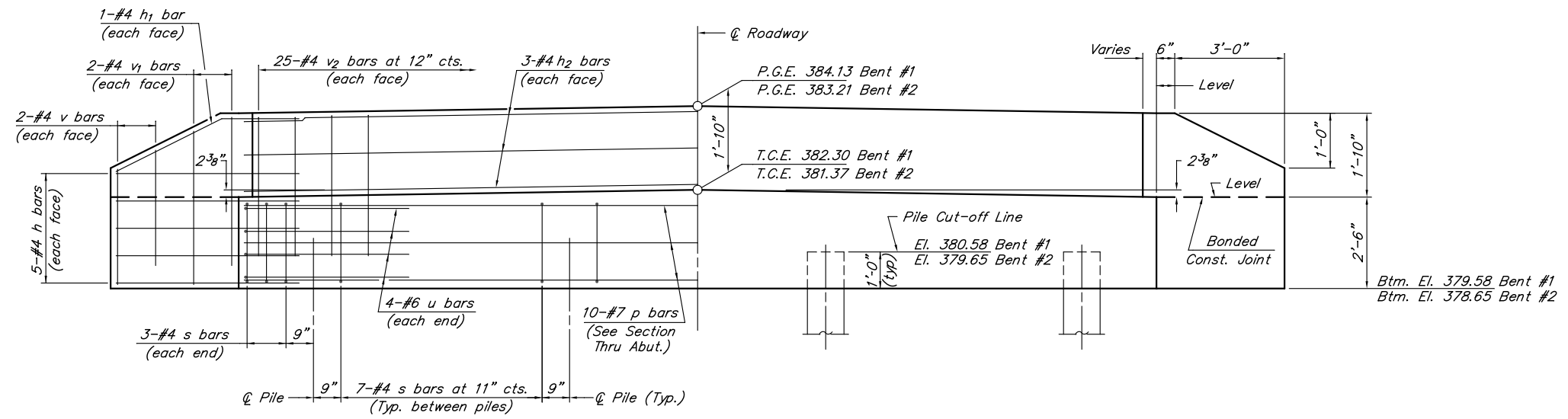
ROUTE	SECTION	COUNTY	TOTAL SHEETS	SHEET NO.
CH 5	13-00155-00-BR	SALINE	12	8
PROJECT NO. X9JX(838)			CONTRACT NO. 99575	



PLAN



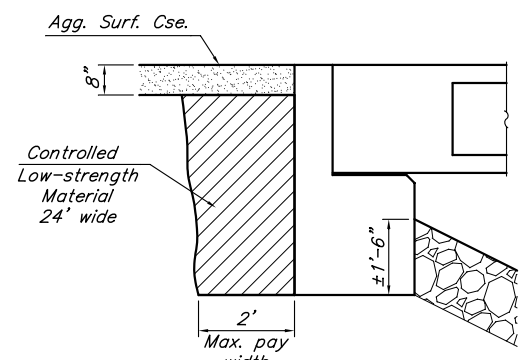
SECTION THRU ABUT.
(At Right Angles)



ELEVATION

BILL OF MATERIAL
FOR ONE ABUTMENT

Bar	No.	Size	Length	Shape
h	20	#4	5'-0"	—
h1	4	#4	5'-2"	—
h2	6	#4	24'-9"	—
p	10	#7	24'-9"	—
s	27	#4	9'-5"	□
u	8	#6	11'-1"	—
v	8	#4	3'-2"	—
v1	8	#4	3'-11"	—
v2	50	#4	3'-5"	—
Concrete Structures			8.5	Cu. Yds.
Reinforcement Bars			1141	Lbs.

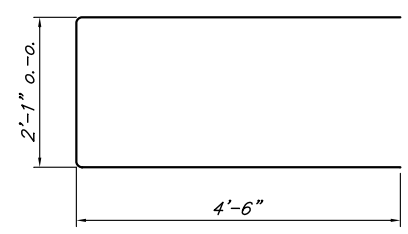


BACKFILL & BERM DETAIL
(At Right Angles to Abut.)

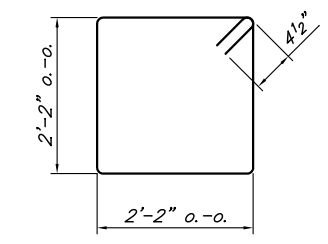
- NOTES
- The Backwall and the portion of the Wingwalls above the bonded construction joint shall be cast against the in-place beam.
 - Reinforcement bars shall be according to ASTM A 706, Grade 60.

DESIGN STRESSES

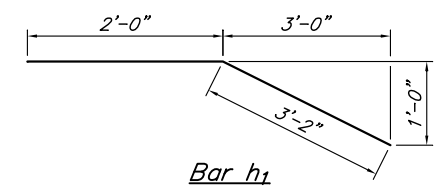
$f'_c = 3,500$ psi
 $f_y = 60,000$ psi



Bar u



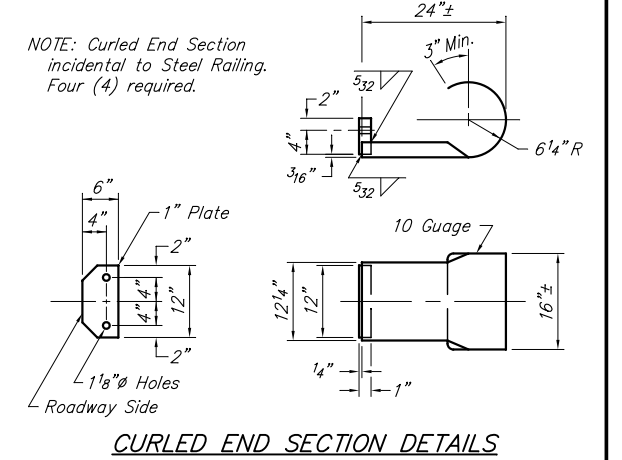
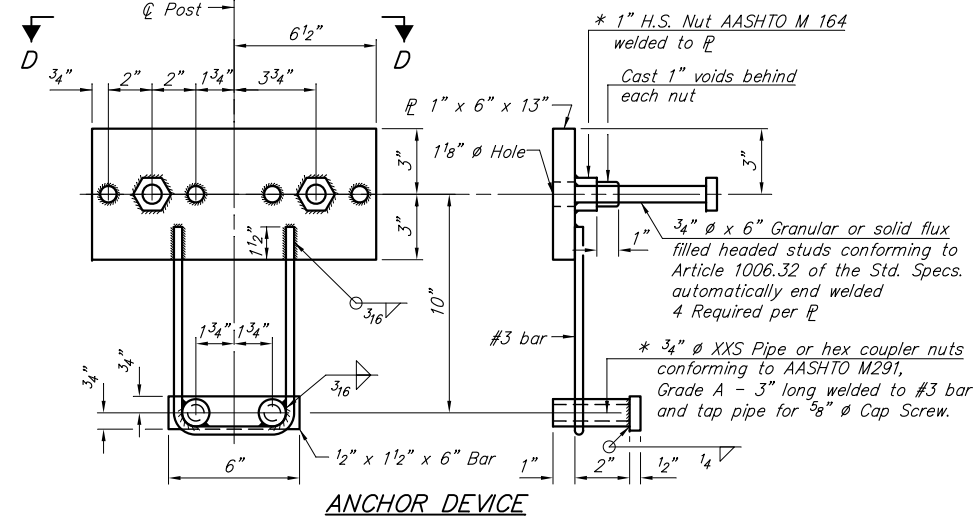
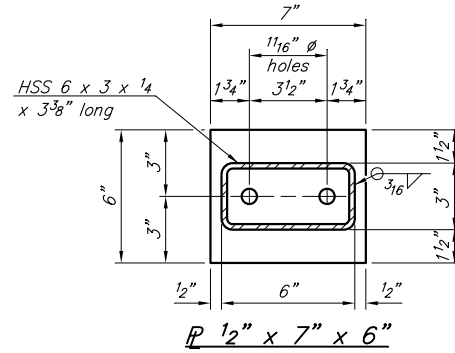
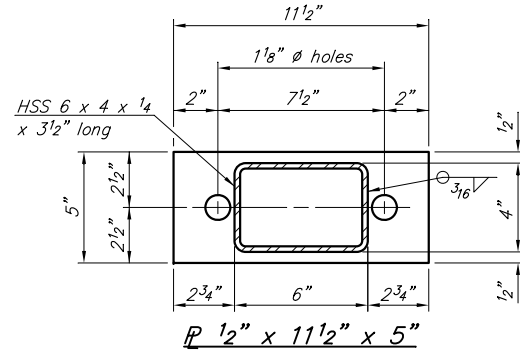
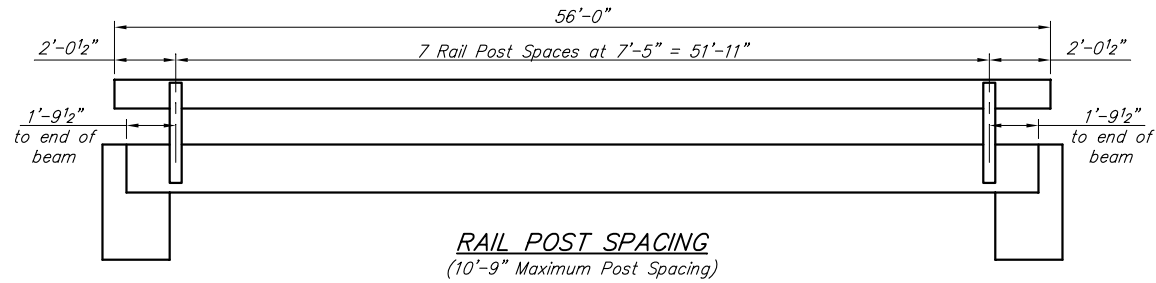
Bar s



Bar h1

ABUTMENT
COUNTY HIGHWAY 5 (DENEAL ROAD)
DENEAL BRANCH
SECTION 13-00155-00-BR
SALINE COUNTY
STRUCTURE NO. 083-3249

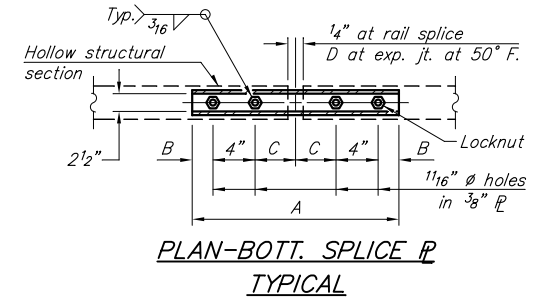
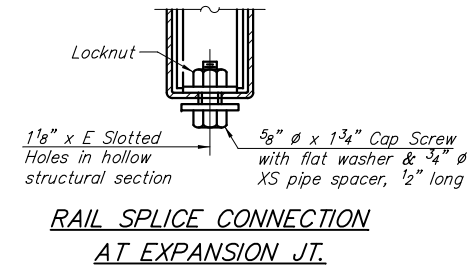
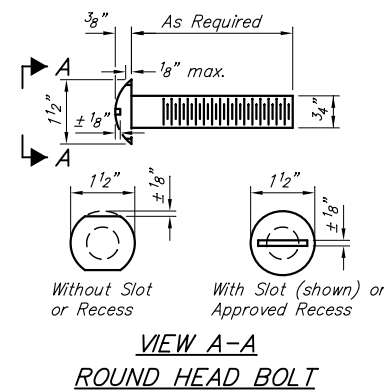
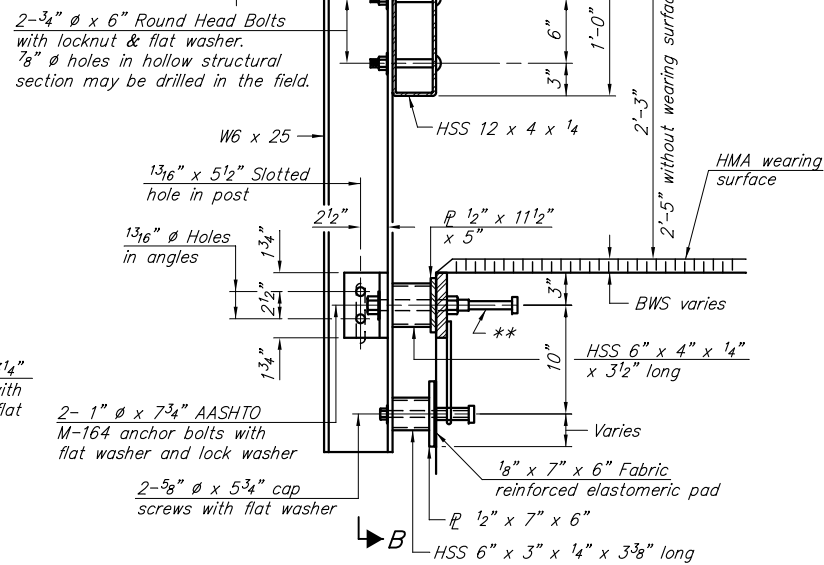
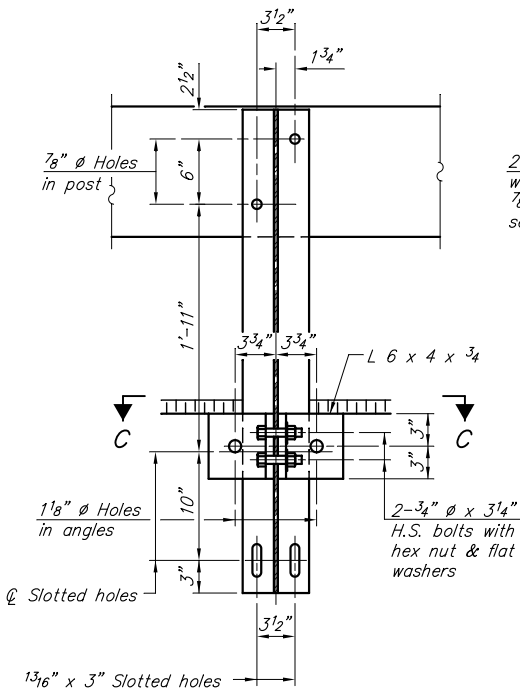
ROUTE	SECTION	COUNTY	TOTAL SHEETS	SHEET NO.
CH 5	13-00155-00-BR	SALINE	12	9
PROJECT NO. X9JX(838)			CONTRACT NO. 99575	



SPLICE DIMENSIONS

T	D	A	B	C	E
Up to 4"	2 1/2"	1'-8"	2"	4"	2 1/2"
>4" to 6 1/2"	3 3/4"	2'-0"	2 1/2"	5 1/2"	3 1/2"
>6 1/2" to 9"	5"	2'-4"	3 1/2"	6 1/2"	9"
>9" to 13"	7"	2'-10"	4 1/2"	8 1/2"	11"
Rail Splice	1 1/4"	1'-8"	2"	4"	

T = Total movement at expansion joint as shown on the design plans.



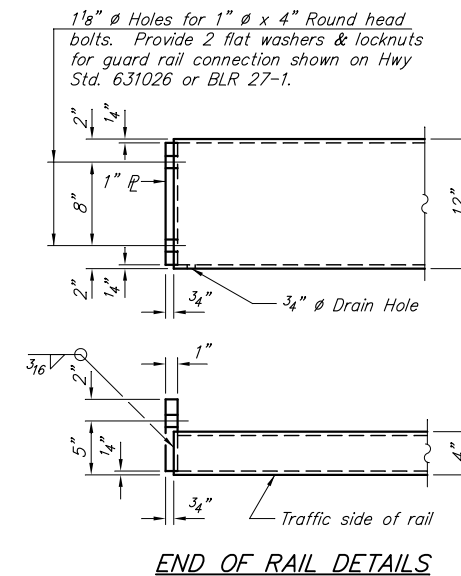
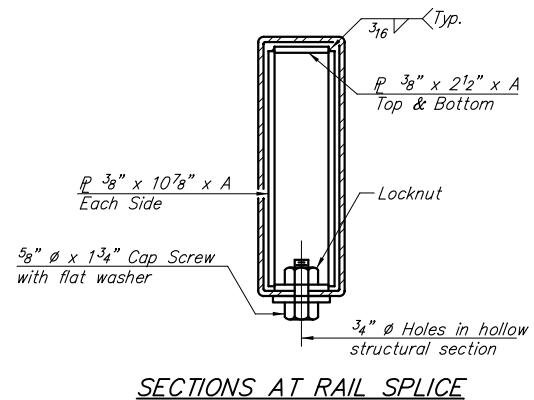
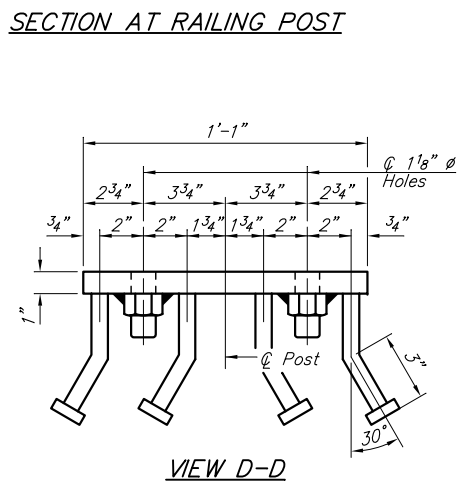
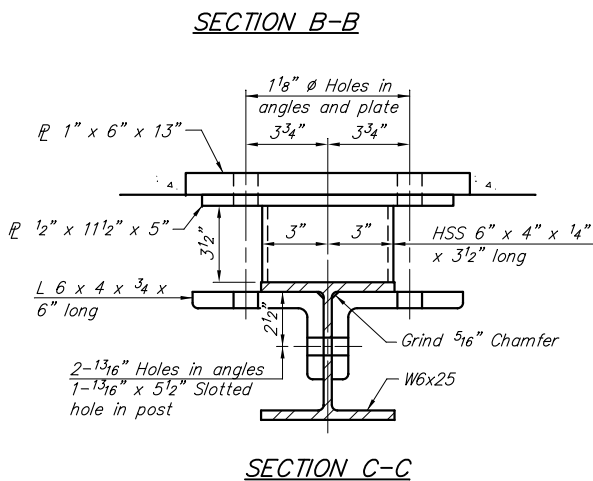
Notes:
For multi-span bridges, sufficient 1/4" x 6" x 1'-2" galvanized steel shims shall be provided to align rail between adjacent spans. Cost included with Steel Railing, Type S-1.
All steel rail elements shall be galvanized according to Article 509.05 of the Standard Specifications.

** The studs of the anchor devices shall be placed below the top reinforcement bars and the outermost longitudinal reinforcement bar shall be placed directly above the studs of the rail post anchor device. The anchorage studs may be bent down 1/2" to accommodate the top reinforcement bar placement.

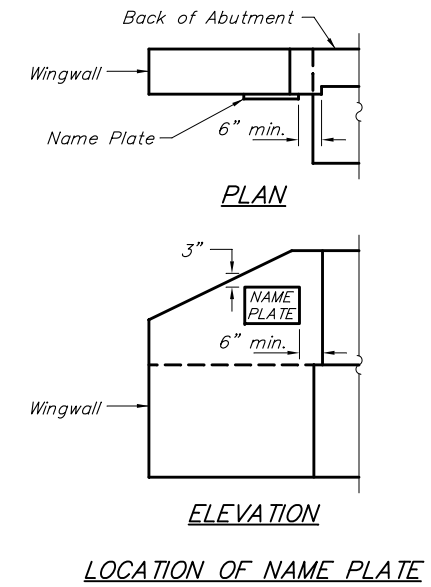
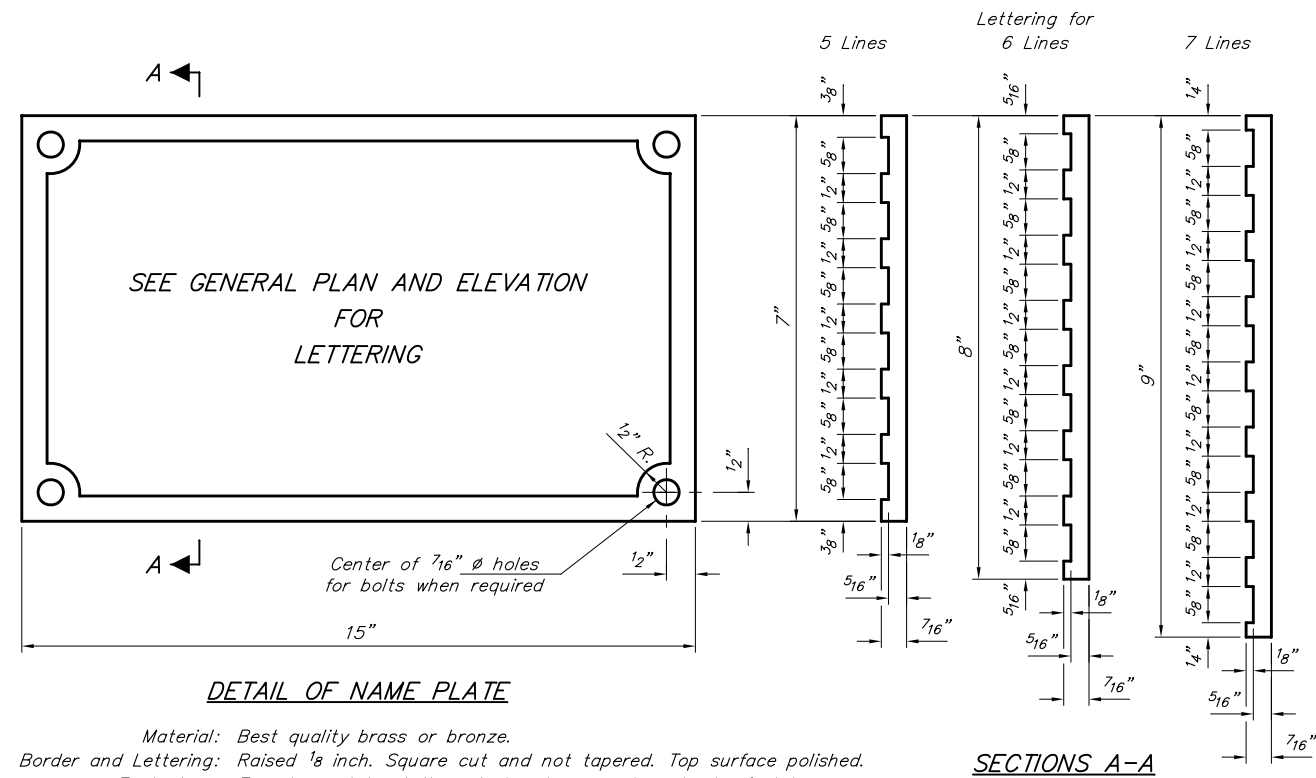
BILL OF MATERIAL

Item	Unit	Quantity
Steel Railing, Type S-1	Foot	112

STEEL RAILING, TYPE S-1
COUNTY HIGHWAY 5 (DENEAL ROAD)
DENEAL BRANCH
SECTION 13-00155-00-BR
SALINE COUNTY
STRUCTURE NO. 083-3249

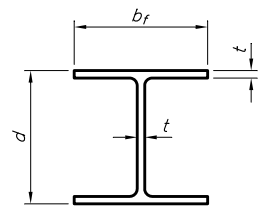


ROUTE	SECTION	COUNTY	TOTAL SHEETS	SHEET NO.
CH 5	13-00155-00-BR	SALINE	12	10
PROJECT NO. X9JX(838)			CONTRACT NO. 99575	



NAME PLATE
 COUNTY HIGHWAY 5 (DENEAL ROAD)
 DENEAL BRANCH
 SECTION 13-00155-00-BR
 SALINE COUNTY
 STRUCTURE NO. 083-3249

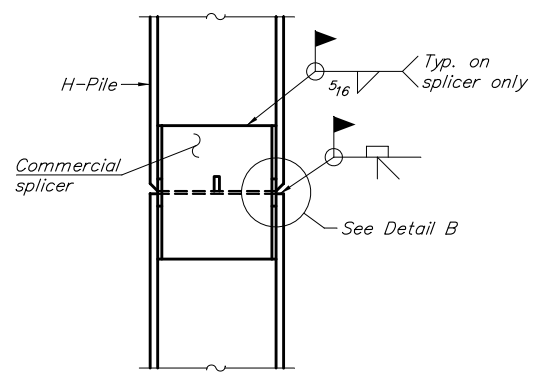
ROUTE	SECTION	COUNTY	TOTAL SHEETS	SHEET NO.
CH 5	13-00155-00-BR	SALINE	12	11
PROJECT NO. X9JX(838)			CONTRACT NO. 99575	



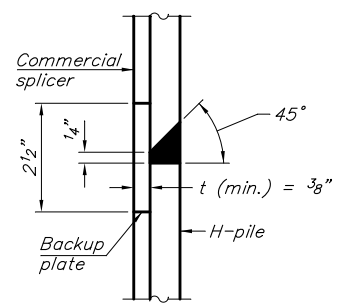
STEEL PILE TABLE

Designation	Depth d	Flange width b _f	Web and Flange thickness t	Encasement diameter A	Encasement Quantity/Ft. C.Y.
HP 14x117	14 1/4"	14 7/8"	1 3/16"	30"	0.173
x102	14"	14 3/4"	1 1/16"	30"	0.174
x89	13 7/8"	14 3/4"	5/8"	30"	0.175
x73	13 5/8"	14 5/8"	1/2"	30"	0.176
HP 12x84	12 1/4"	12 1/4"	1 1/16"	24"	0.110
x74	12 1/8"	12 1/4"	5/8"	24"	0.111
x63	12"	12 1/8"	1/2"	24"	0.112
x53	11 3/4"	12"	7/16"	24"	0.112
HP 10x57	10"	10 1/4"	9/16"	24"	0.112
x42	9 3/4"	10 1/8"	7/16"	24"	0.113
HP 8x36	8"	8 1/8"	7/16"	18"	0.063

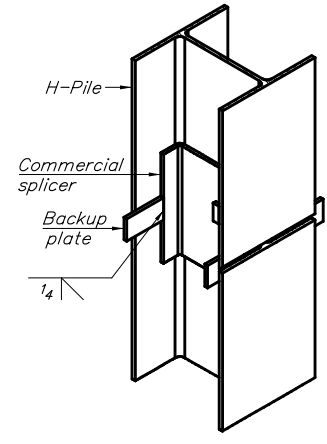
Note: The steel H-piles shall be according to AASHTO M270 Grade 50.



ELEVATION

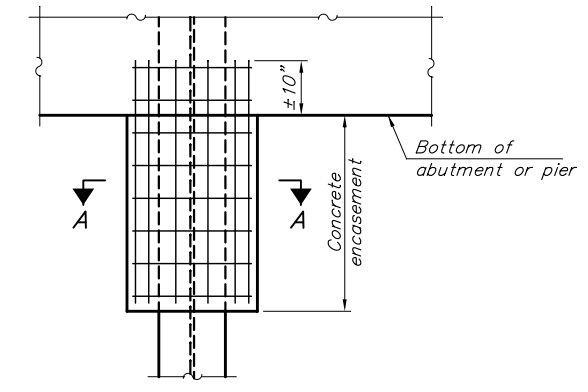


DETAIL "B"



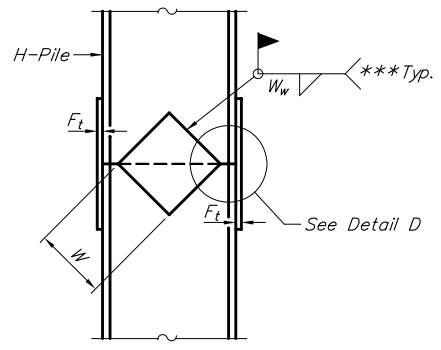
ISOMETRIC VIEW

WELDED COMMERCIAL SPLICE

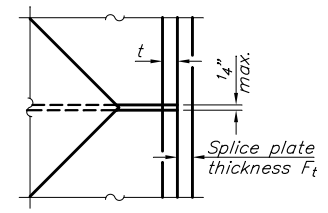


ELEVATION

PILE ENCASEMENT

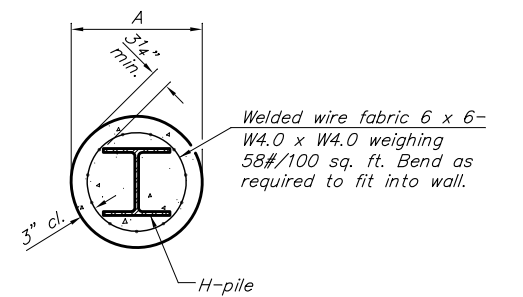


ELEVATION



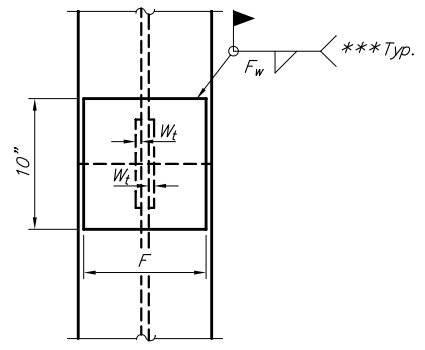
DETAIL D

WELDED PLATE FIELD SPLICE



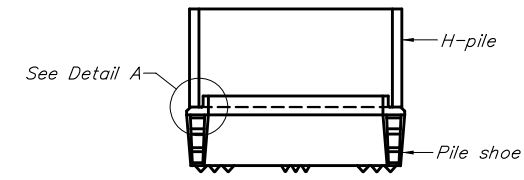
SECTION A-A

Note: Forms for encasement may be omitted when soil conditions permit.



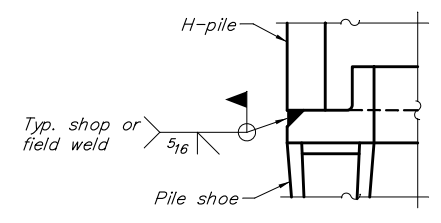
END VIEW

Designation	F	F _t	F _w	W	W _t	W _w
HP 14x117	12 1/2"	1"	7 3/8"	7 3/4"	5 3/8"	1/2"
x102	12 1/2"	7/8"	3 1/4"	7 3/4"	5 3/8"	1/2"
x89	12 1/2"	3/4"	1 1/16"	7 3/4"	5 3/8"	1/2"
x73	12 1/2"	5/8"	9/16"	7 3/4"	5 3/8"	1/2"
HP 12x84	10"	7/8"	1 1/16"	6 1/2"	5 3/8"	1/2"
x74	10"	7/8"	1 1/16"	6 1/2"	5 3/8"	1/2"
x63	10"	5/8"	1/2"	6 1/2"	1/2"	3/8"
x53	10"	5/8"	1/2"	6 1/2"	1/2"	3/8"
HP 10x57	8"	3/4"	9/16"	5 1/4"	1/2"	3/8"
x42	8"	5/8"	9/16"	5 1/4"	1/2"	3/8"
HP 8x36	7"	5/8"	7/16"	4 1/4"	1/2"	3/8"

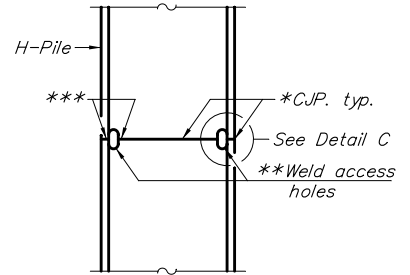


ELEVATION

H-PILE SHOE ATTACHMENT

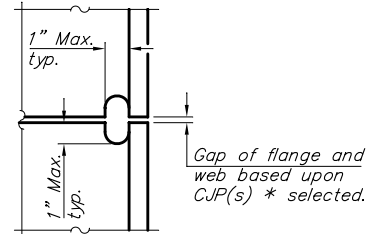


DETAIL A



ELEVATION

COMPLETE PENETRATION WELD SPLICE

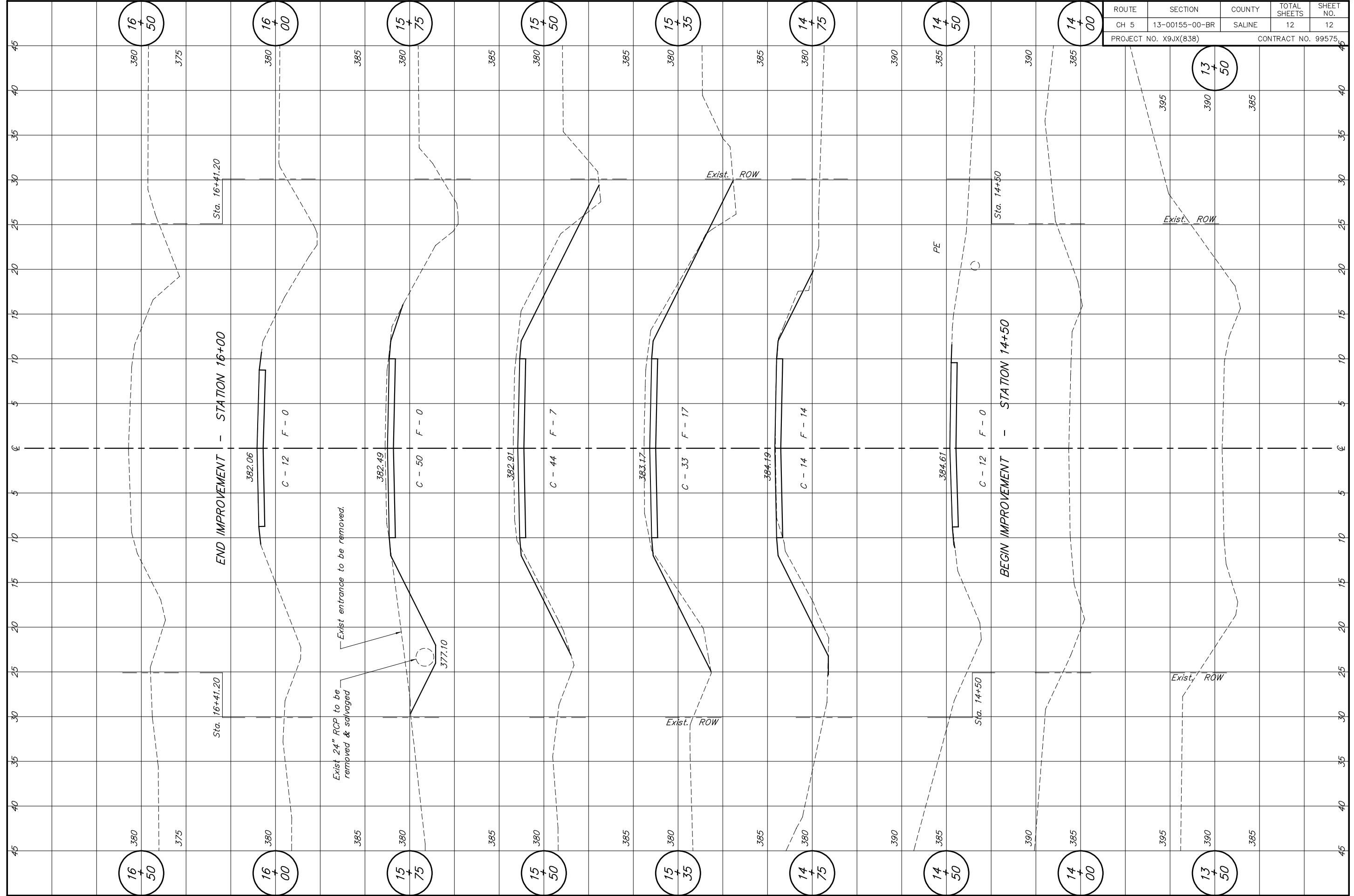


DETAIL C

* Use joint conforming to Fig. 3.4 in AWS D1.1. Structure Welding Code - Steel.
 ** Preparation per Fig. 5.2 in AWS D1.1. Structure Welding Code - Steel.
 *** Interrupt welds 1/4" from end of each pile.

PILING DETAILS
 COUNTY HIGHWAY 5 (DENEAL ROAD)
 DENEAL BRANCH
 SECTION 13-00155-00-BR
 SALINE COUNTY
 STRUCTURE NO. 083-3249

ROUTE	SECTION	COUNTY	TOTAL SHEETS	SHEET NO.
CH 5	13-00155-00-BR	SALINE	12	12
PROJECT NO. X9JX(838)			CONTRACT NO. 99575	



16
+
50

16
+
00

15
+
75

15
+
50

15
+
35

14
+
75

14
+
50

14
+
00

13
+
50

16
+
50

16
+
00

15
+
75

15
+
50

15
+
35

14
+
75

14
+
50

14
+
00

13
+
50

END IMPROVEMENT - STATION 16+00

BEGIN IMPROVEMENT - STATION 14+50

Sta. 16+41.20

Sta. 16+41.20

Sta. 14+50

Sta. 14+50

Exist 24" RCP to be removed & salvaged.

Exist entrance to be removed.

Exist. ROW

Exist. ROW

Exist. ROW

Exist. ROW

382.06

C - 12

F - 0

382.49

C - 50

F - 0

382.91

C - 44

F - 7

383.17

C - 33

F - 17

384.19

C - 14

F - 14

PE

384.61

C - 12

F - 0

377.10

380

380

380

380

380

380

380

380

380

380

380

380

380

380

380

380

380

380

380

380

380

380

380

380

380

380

380

380

380

380

380

380

380

380

380

380

380

380

380

380

380

380

380

380

380

380

380

380

380

380

380

380

380

380

380

380

380

380

380

380

380

380

380

380

380

380

380

380

380

380

380

380

380

380

380

380

380

380

380

380

380

380

380

380

380

380

380

380

380

380

380

380

380

380

380

380

380

380

380

380

380

380

380

380

380

380

380

380

380

380

380

380

380

380

380

380

380

380

380

380

380

380

380

380

380

380

380

380

380

380

380

380

380

380

380

380

380

380

380

380

380

380

380

380

380

380

380

380

380

380

380

380

380

380

380

380

380

380

380

380

380

380

380

380

380

380

380

380

380

380

380

380

380

380

380

380

380

380

380

380

380

380

380

380

380

380

380

380

380

380

380

380

380

380

380

380

380

380

380

380

380

380

380

380

380

380

380

380

380

380

380

380

380

380

380

380

380

380

380

380

380

380

380

380

380

380

380

380

380

380

380

380

380

380

380

380

380

380

380

380

380

380

380

380

380

380

380