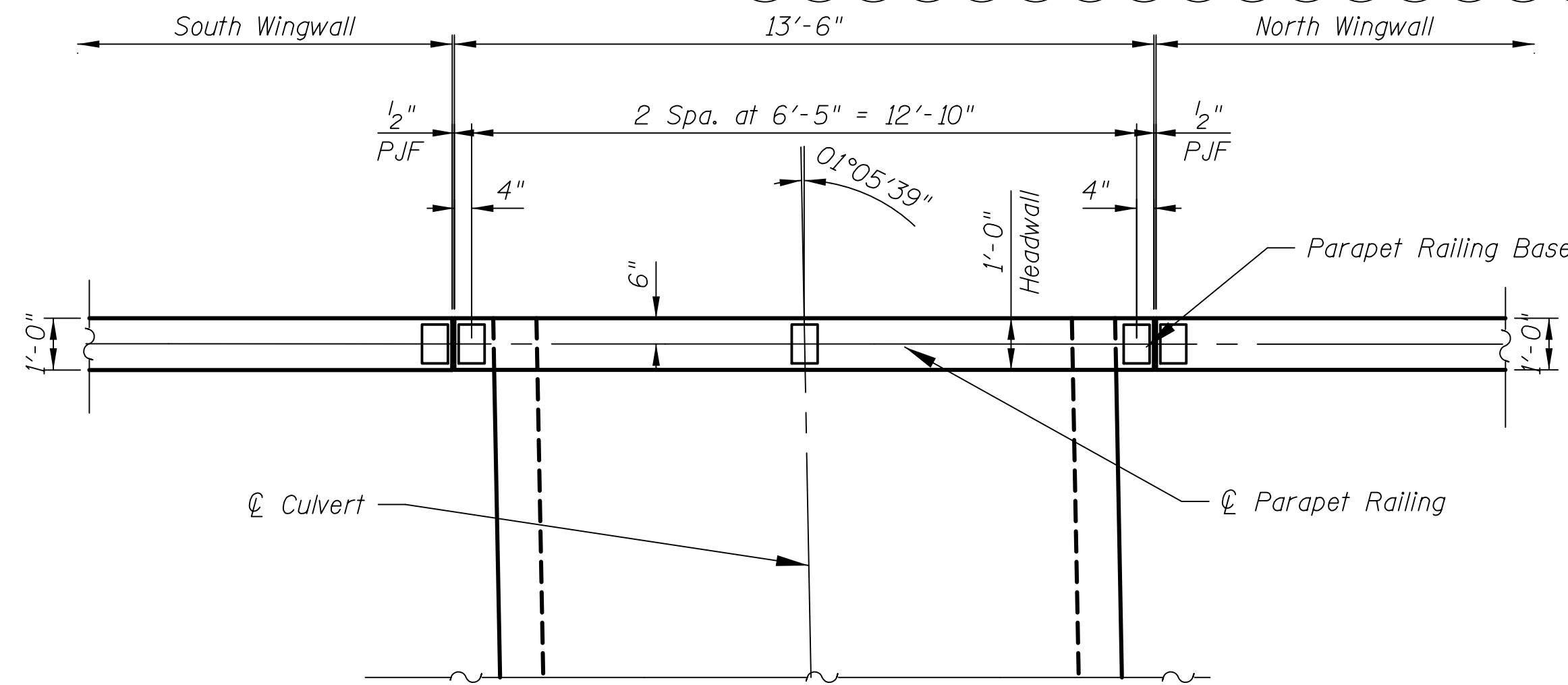
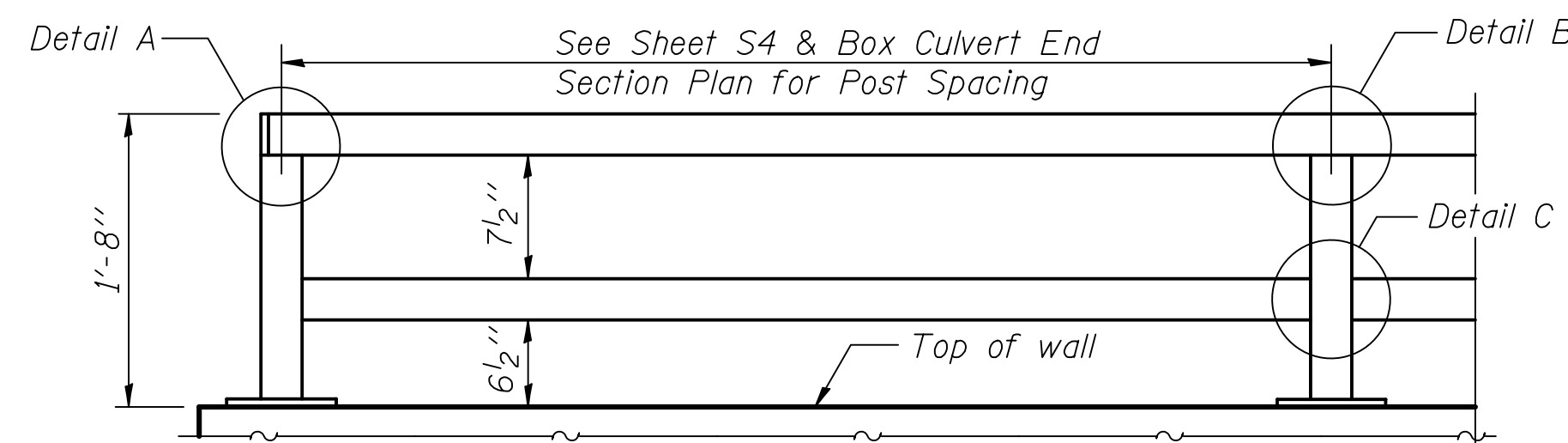


Notes:
All structural steel tubing, post and railing, for parapet railing shall be CVN tested according to 1006.34(b) of the Standard Specifications.

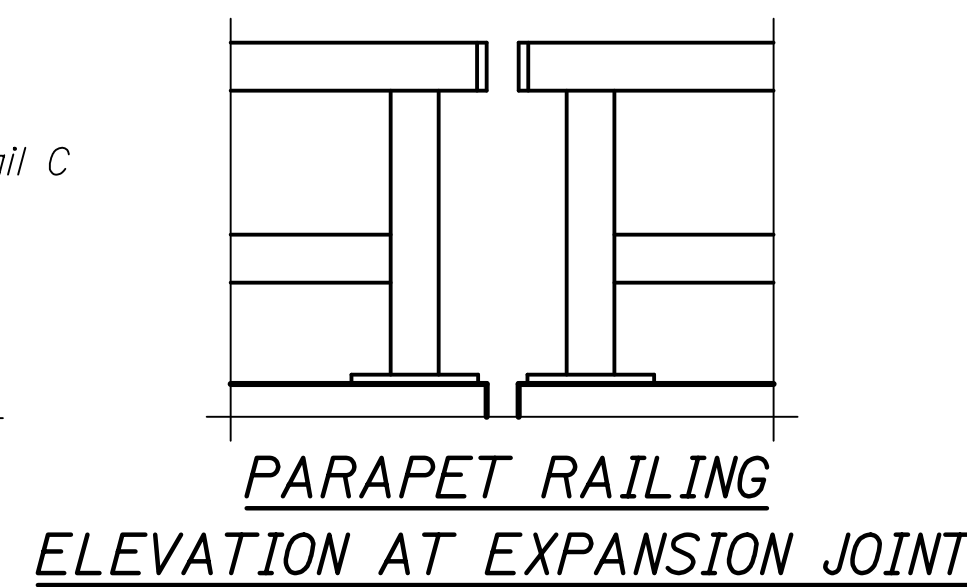
The Organic Zinc Rich Primer / Epoxy / Urethane Paint System shall be used for the painting of new structural steel in the railing. The entire system shall be shop applied, with the exception of masked off connection surfaces, field installed fasteners, and damaged areas shall be touched up in the field. The color shall be Matte Black.



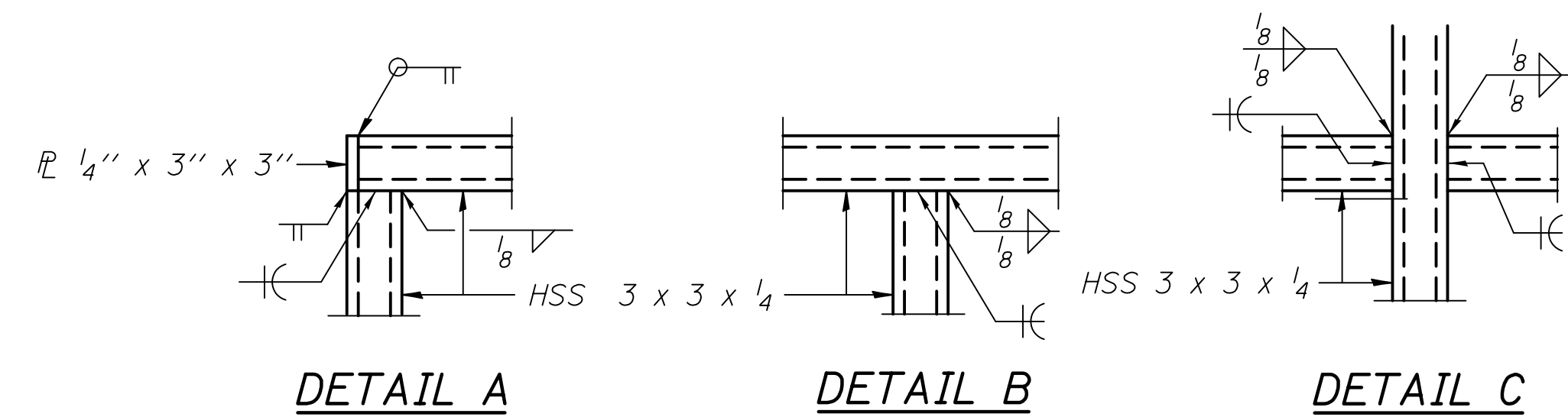
BOX CULVERT END SECTION PLAN
(Showing Dimensions)



PARAPET RAILING ELEVATION
(Inside Face of Two Element Rail)



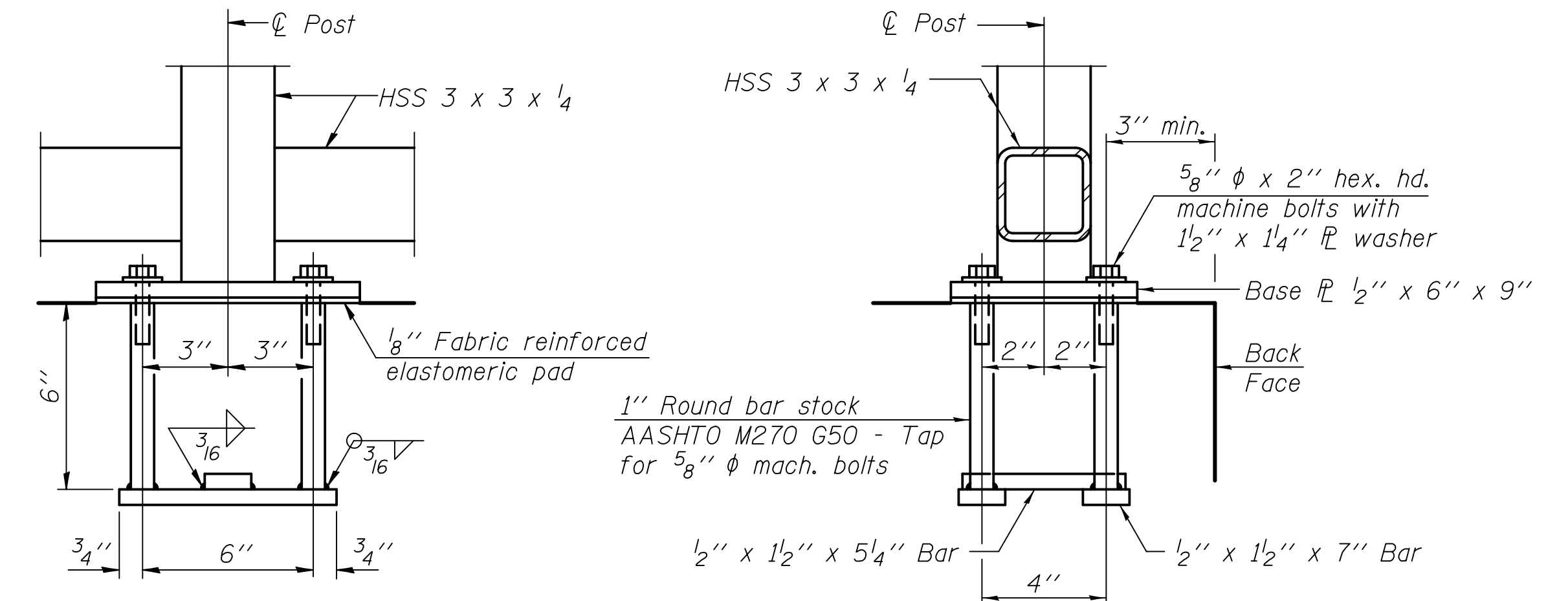
PARAPET RAILING ELEVATION AT EXPANSION JOINT



DETAIL A

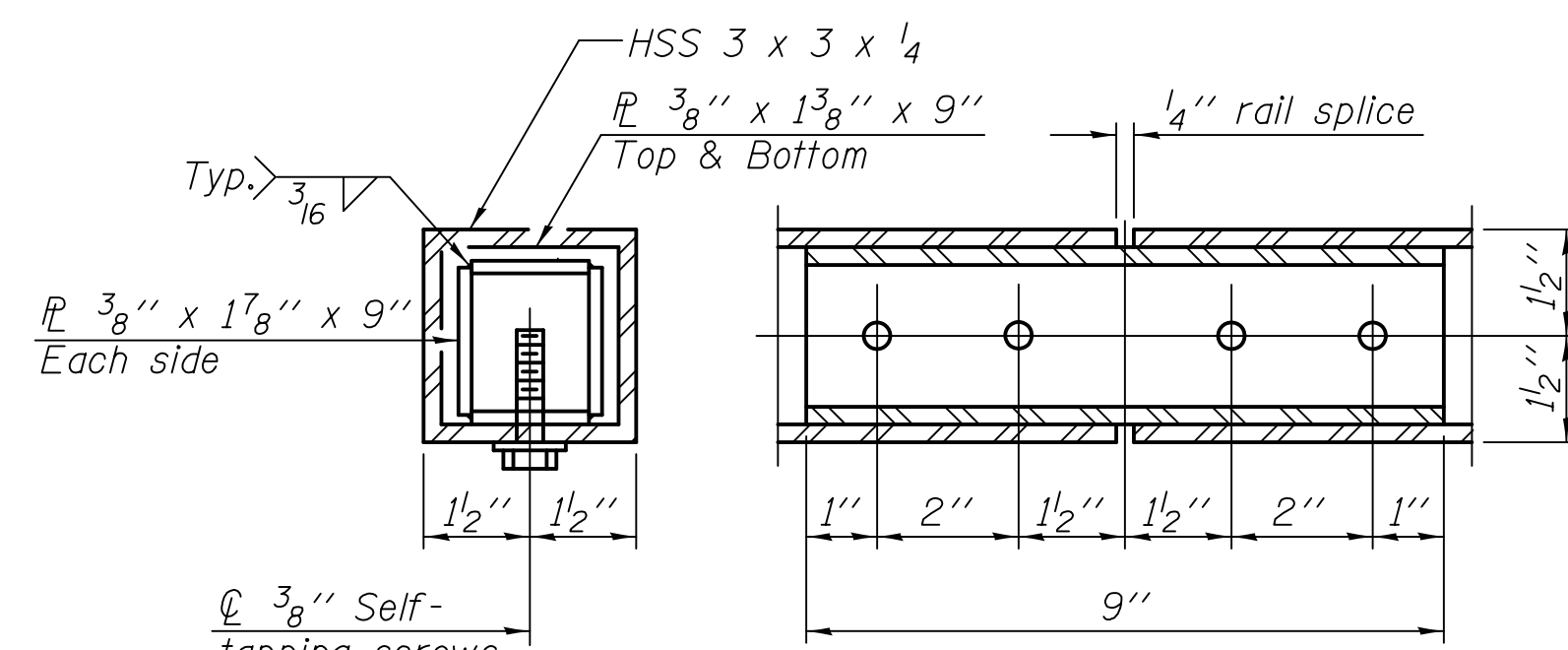
DETAIL B

DETAIL C

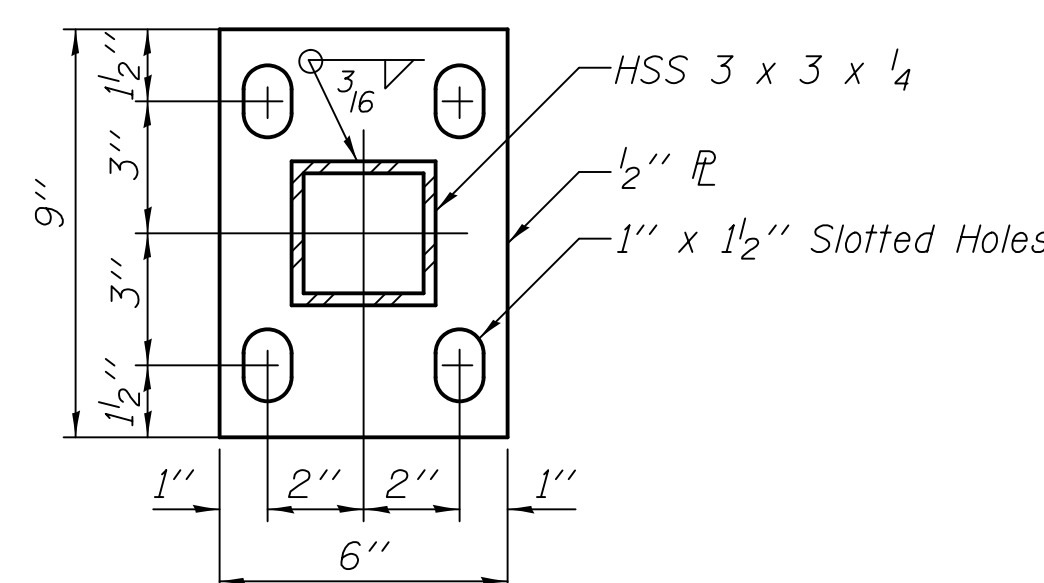


PARAPET RAILING - ANCHOR BOLT DETAILS

In lieu of the cast-in-place anchor device shown, the Contractor has the option of drilling and setting 5/8" phi anchor rods according to Article 509.06 of the Standard Specifications. Embedment shall be according to the manufacturer's specifications.



PARAPET RAILING - RAIL SPLICE



PARAPET RAILING - BASE PLATE

BILL OF MATERIAL

Item	Unit	Quantity
Parapet Railing	Foot	74

MPR: 4/12/2019 9:55:58 AM c:\p.w.\work\king\civiltech_production\mpr\dms2391\06.Railing_Details.dgn