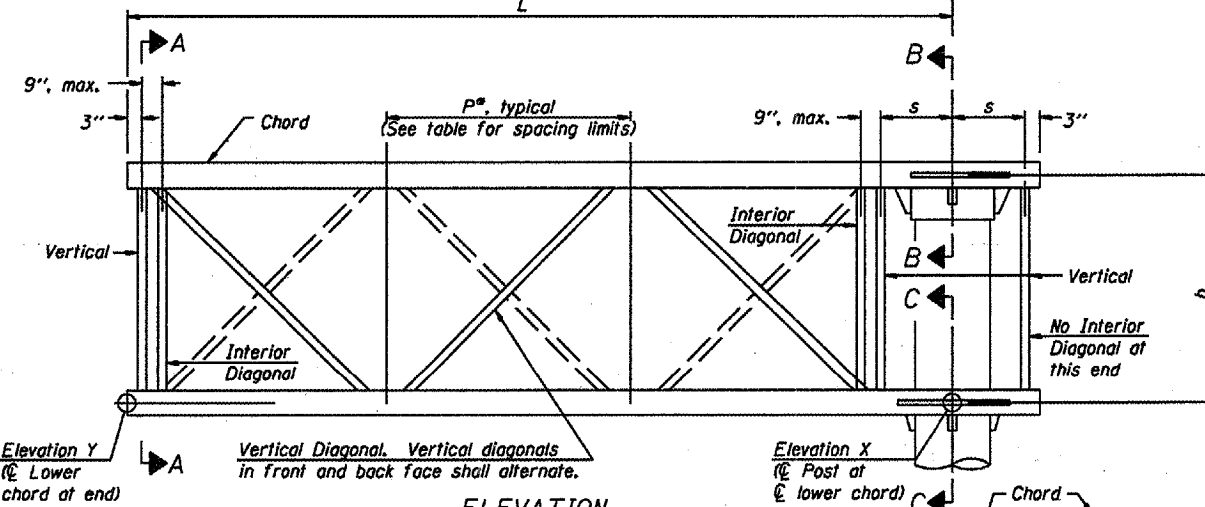
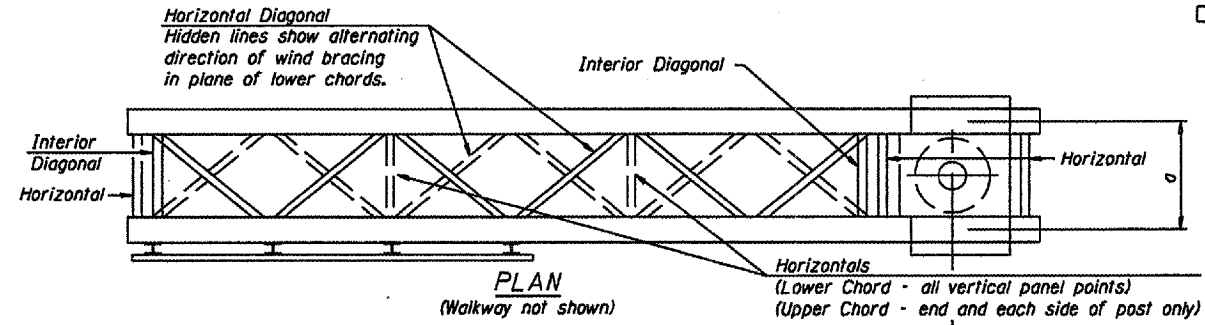


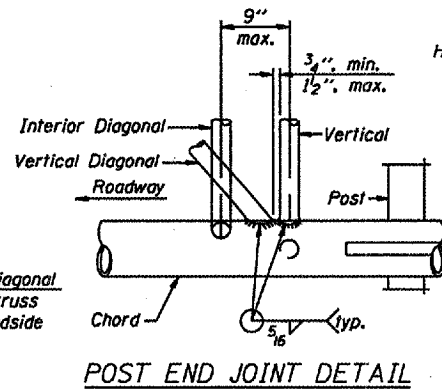
STATE OF ILLINOIS  
DEPARTMENT OF TRANSPORTATION

Various Routes  
OVD SIN STR REP & REPL 2007-16  
Various Counties  
Sheet 22 of 51  
Contract Number 44949



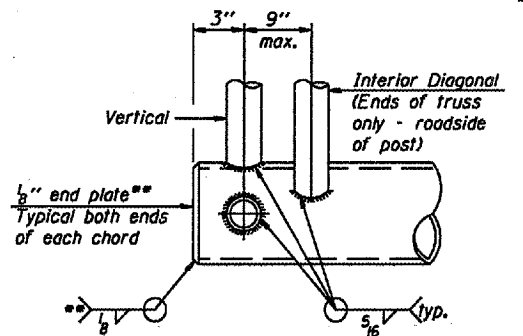
**TYPICAL TRUSS UNIT**  
For Section B-B and Section C-C, see Base Sheet OSC-A-3.

Note:  
There are twice as many horizontal diagonals as there are vertical diagonals.



**SHOP CAMBER TABLE**

Unit Length (L)	Shop Camber at End
15'	1 1/2"
16'-17'	1 3/4"
18'-20'	2"
21'-22'	2 1/4"
23'-25'	2 1/2"
26'-27'	2 3/4"
28'-30'	3"
31'-32'	3 1/4"
33'-35'	3 1/2"
36'-37'	4"
38'-40'	4 1/2"

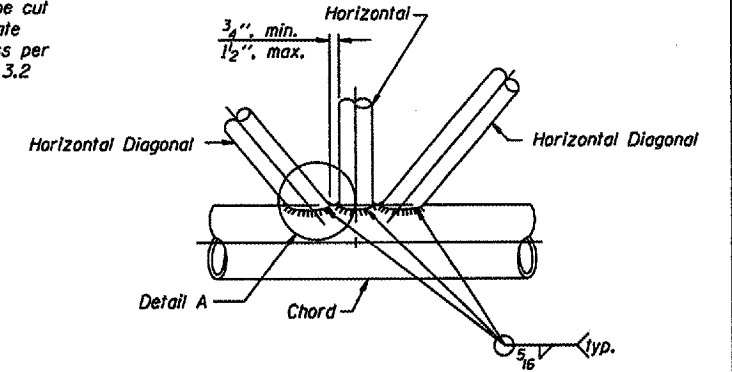
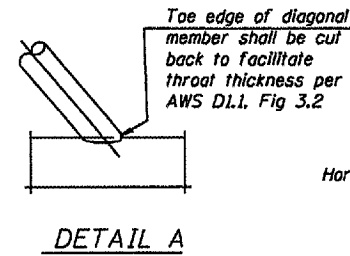
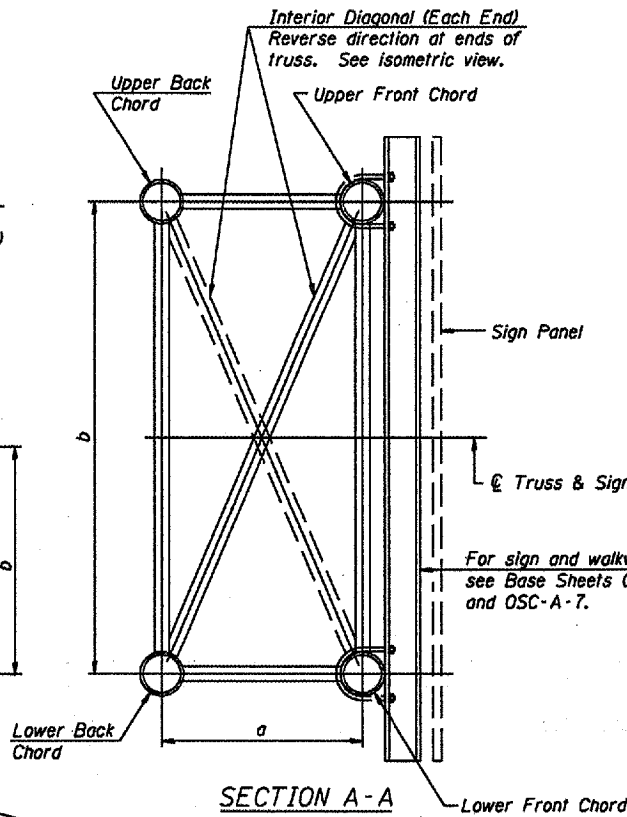


**CANTILEVER END JOINT DETAIL**  
Contractor may alternatively use standard aluminum drive-fit cap to close ends.

DESIGNED -	20
CHECKED -	EXAMINED
DRAWN -	PASSED
CHECKED -	ENGINEER OF BRIDGES AND STRUCTURES

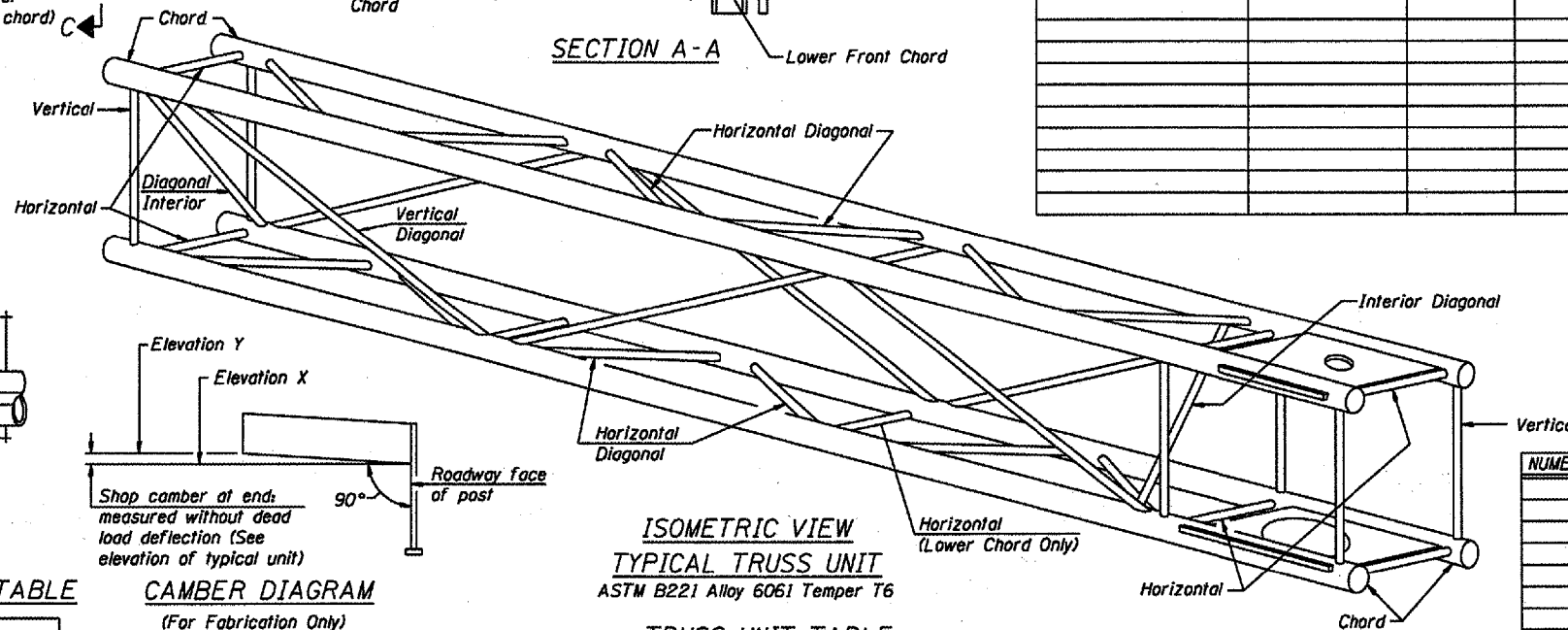
OSC-A-2

7/01/2006



**TRUSS INTERIOR JOINT DETAIL**

Structure Number	Station	Truss Type	Design Length (L)	Number of Panels Per Unit	Panel Length (P) <sup>#</sup>
5C010U045R012.76	30 + 00	III-C-A	40' - 0"	8	4' - 9"



**ISOMETRIC VIEW TYPICAL TRUSS UNIT**  
ASTM B221 Alloy 6061 Temper T6

**TRUSS UNIT TABLE**

Truss Type	Dimension "a"	Dimension "b"	Dimension "c"	Limits for Panel Spacing (P) <sup>#</sup>	Up. & Low. Chord			
					Verticals: Horizontal, and Interior Diagonals		Verticals: Horizontal, and Interior Diagonals	
					O.D.	Wall	O.D.	Wall
I-C-A	24"	54"	16"	36" min. to 48" max.	5"	5/16"	2 1/2"	5/16"
II-C-A	36"	66"	21"	42" min. to 54" max.	6 1/2"	5/16"	3 1/4"	5/16"
III-C-A (35' Max.)	36"	84"	21"	48" min. to 66" max.	7"	3/8"	3 1/2"	3/8"
III-C-A (>35' to 40')	36"	84"	21"	48" min. to 66" max.	8"	3/8"	3 1/2"	3/8"

<sup>#</sup>P =  $\frac{L - 3"}{\# \text{ Panels}}$

NUMBER	REVISION	DATE

CANTILEVER SIGN STRUCTURES  
TRUSS DETAILS  
ALUMINUM TRUSS & STEEL POST

District 5  
Overhead Sign  
Structure Replacement