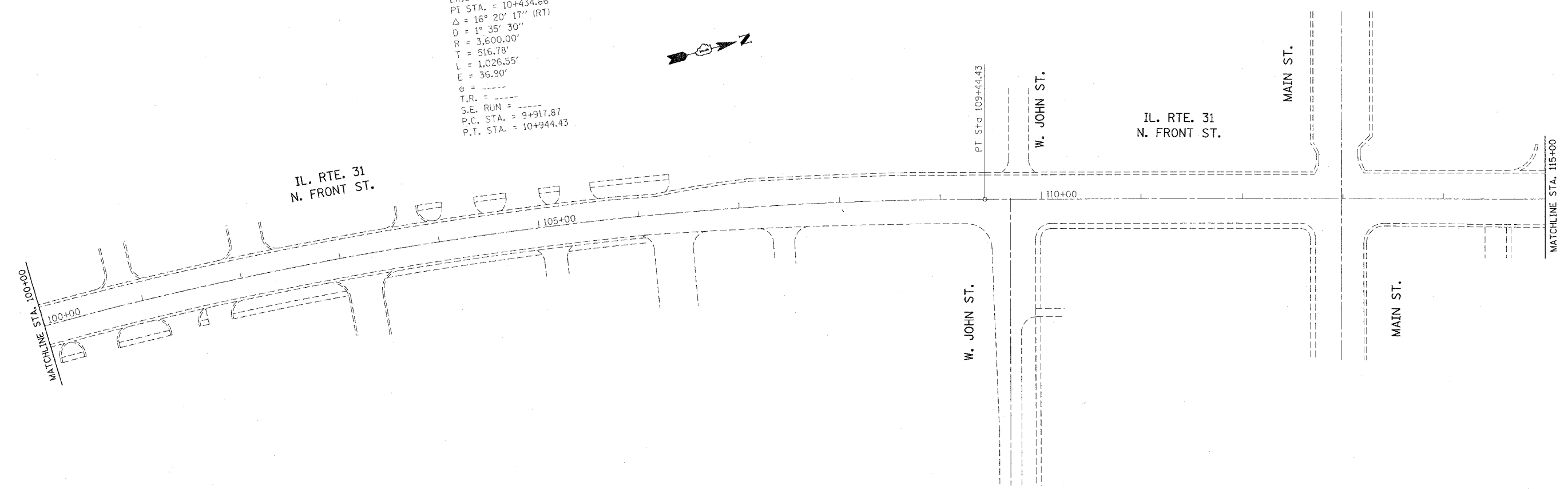


F.A.P. RTE.	SECTION	COUNTY	TOTAL SHEETS	SHEET NO.
336	112 RS-5	MCHENRY	34	12
STA. 30+00		TO STA. 45+00		
FED. ROAD DIST. NO.		ILLINOIS FED. AID PROJECT		

EXIST. CURVE E..IL31-4
 PI STA. = 10+434.66
 $\Delta = 16^{\circ} 20' 17''$ (RT)
 $D = 1^{\circ} 35' 30''$
 $R = 3,600.00'$
 $T = 516.78'$
 $L = 1,026.55'$
 $E = 36.90'$
 $e = \dots$
 $T.R. = \dots$
 $S.E. RUN = \dots$
 $P.C. STA. = 9+917.87$
 $P.T. STA. = 10+944.43$



- PAVEMENT MARKING LEGEND**
- ① 4" LANE LINE- WHITE SKIP DASH
 - ② 4" DOUBLE YELLOW SOLID LINE
 - ③ 6" TURN LANE-WHITE
 - ④ LETTERS & SYMBOLS-WHITE
 - ⑤ 12" DIAGONALS-YELLOW @ 45°
 - ⑥ 6" CROSS WALK-WHITE
 - ⑦ 24" STOP BAR-WHITE
 - ⑧ 6" TURN LANE DOTTED EXTENSIONS
 - ⑨ 12" SCHOOL CROSSING
 - ⑩ 4" WHITE LINE
 - ⑪ 8" WHITE ISLAND
 - ⑫ 12" DIAGONALS-WHITE @ 45°

NOTES
 LIMIT OF RESURFACING ON SIDE-STREETS THROUGH OUT THE IMPROVEMENT SHALL BE TO THE RADIUS OF RETURN OR AS DIRECTED BY THE ENGINEER.

 ALL FINAL PAVEMENT MARKINGS SHALL BE THERMOPLASTIC (OF THE EXTRUDED TYPE) AND SHOULD BE PLACED IN ACCORDANCE WITH "DISTRICT ONE TYPICAL PAVEMENT MARKINGS" DETAIL, (TC-13).

 ALL RAISED REFLECTIVE PAVEMENT MARKERS SHALL BE PLACED IN ACCORDANCE WITH THE DISTRICT ONE "TYPICAL APPLICATIONS RAISED REFLECTIVE PAVEMENT MARKER DETAIL." (TC-11).

REVISIONS	
NAME	DATE

ILLINOIS DEPARTMENT OF TRANSPORTATION
 IL RTE. 31 (FRONT ST.)
 McCULLOM LAKE RD. TO BULL VALLEY RD.
 ROADWAY & PAVEMENT MARKING PLAN
 SCALE: VERT. _____
 HORIZ. _____
 DATE _____ DRAWN BY _____
 CHECKED BY _____

PLOT DATE = 3/6/2007
 FILE NAME = c:\pav\mch\112rs5\112rs5.dwg
 USER NAME = ABREUHA