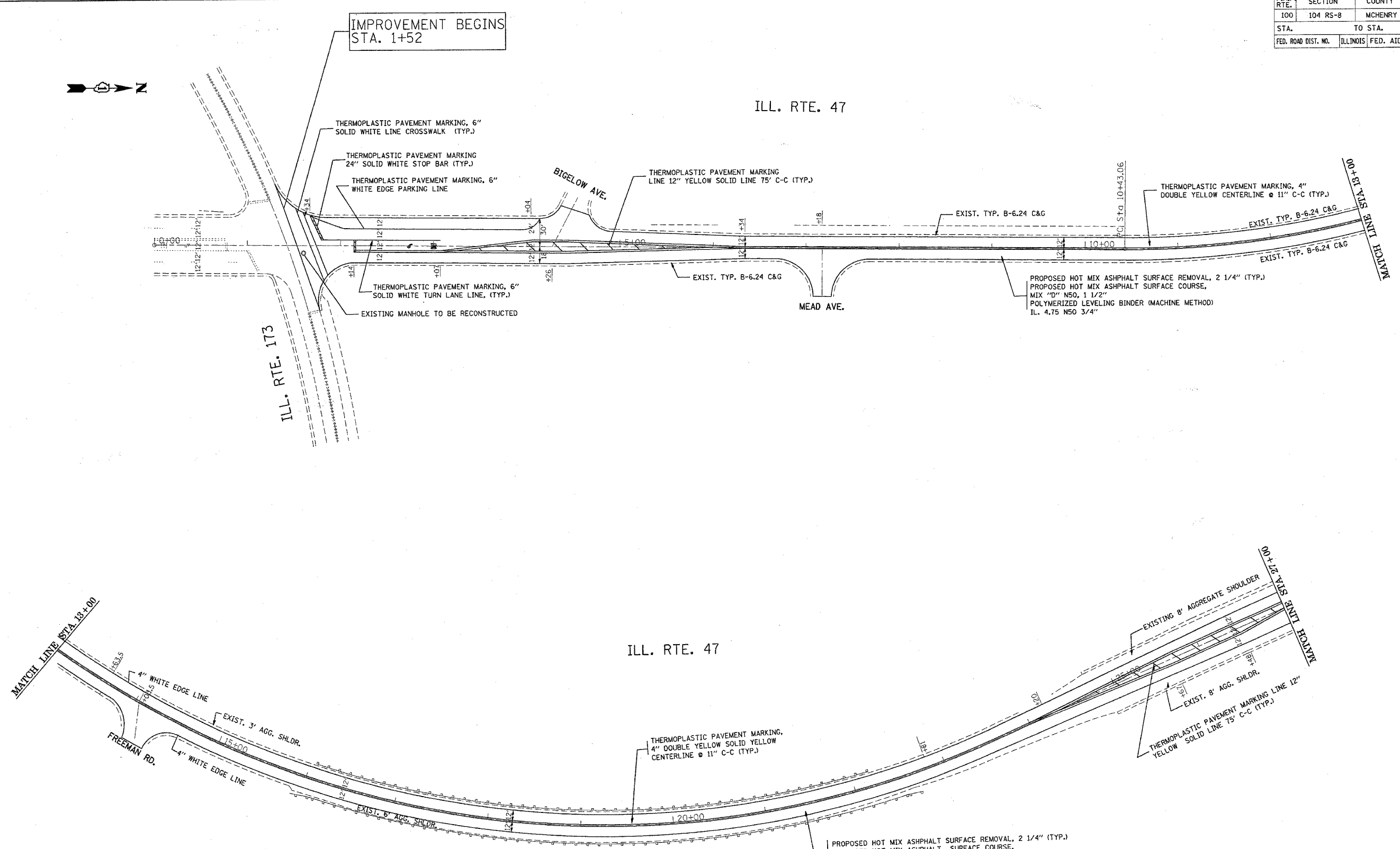
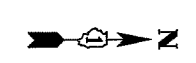


CONTRACT NO. 60B78				
F.A.P. RTE.	SECTION	COUNTY	TOTAL SHEETS	SHEET NO.
100	104 RS-8	MCHENRY	22	9
STA.		TO STA.		
FED. ROAD DIST. NO.		ILLINOIS	FED. AID PROJECT	



LIMITS OF RESURFACING SHALL BE TO THE RADIUS OF RETURN ON ALL SIDE STREETS OR AS DIRECTED BY THE ENGINEER.

PROPOSED HOT MIX ASPHALT SURFACE REMOVAL, 2 1/4\" (TYP.)
 PROPOSED HOT MIX ASPHALT SURFACE COURSE,
 MIX "D" N50, 1 1/2\"
 POLYMERIZED LEVELING BINDER (MACHINE METHOD)
 IL. 4.75 N50 3/4\"

REVISIONS	
NAME	DATE

ILLINOIS DEPARTMENT OF TRANSPORTATION
 IL 47
 ILL 173 TO WISCONSIN
 STATE LINE ROAD.
 ROADWAY & PAVEMENT
 MARKING PLAN
 SCALE: VERT. DRAWN BY
 DATE HORIZ. CHECKED BY

PLOT DATE = 2/21/2007
 FILE NAME = c:\p\c\mets\j142786\j142786.mxd
 PLOT SCALE = 50.0000' / 1\"
 USER NAME = BANKSL