

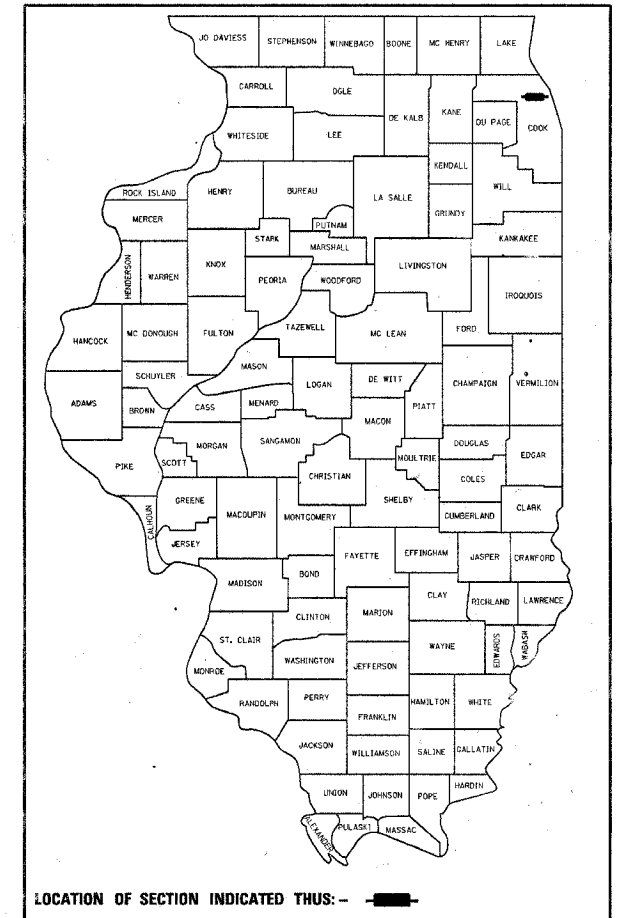
60C09

F.A.U. RTE.	SECTION	COUNTY	TOTAL SHEETS	SHEET NO.
1349	2006-41 TS	COOK	12	1

0-91-116-07

- INDEX OF SHEETS**
- COVER SHEET
  - 3. SUMMARY OF QUANTITIES
  - 7. DISTRICT 1 STANDARD TRAFFIC SIGNAL DESIGN DETAILS (4 SHEETS)
  - 9. TEMPORARY TRAFFIC SIGNAL AND REMOVAL PLAN
  - 11. TRAFFIC SIGNAL MODERNIZATION
  - STREET NAME SIGNS

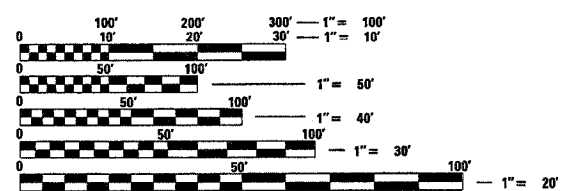
STATE OF ILLINOIS  
DEPARTMENT OF TRANSPORTATION  
DIVISION OF HIGHWAYS  
**PROPOSED  
HIGHWAY PLANS**  
F.A.U. 1349 (DEVON AVE)  
SECTION 2006-41 TS  
DEVON AVENUE AT DEE ROAD  
TRAFFIC SIGNAL MODERNIZATION  
COOK COUNTY  
D-91-116-07



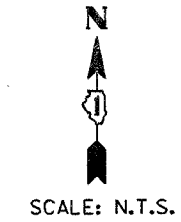
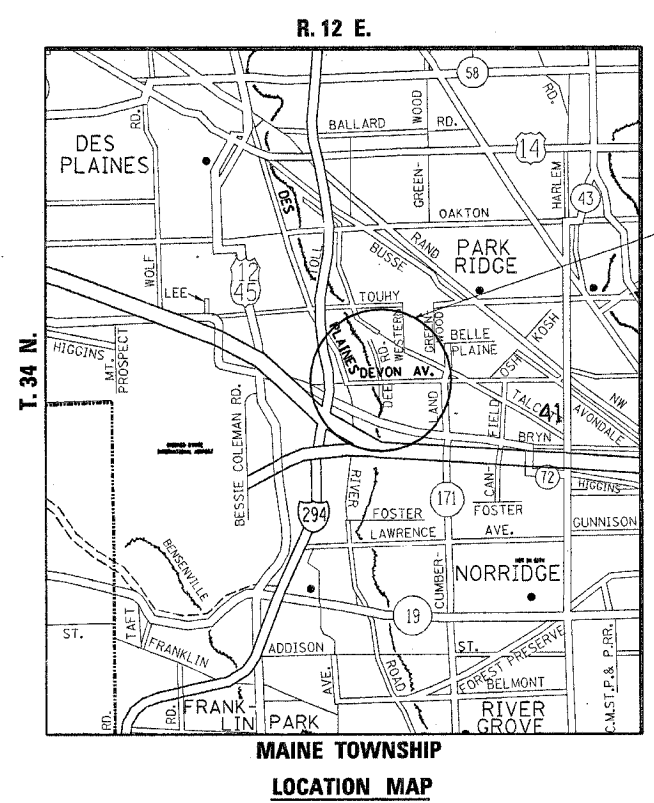
**STANDARD DRAWINGS**

701006-02	701011-11	701101-01	701301-02	702001-06
424001-04	720001	813001-01	814001-01	814006-01
857001	877001-02	877006-02	877011-02	878001-05
880001	880006	886001		
701201-02	701316-03	701321-08	701406-04	701501-03
701502-01	701606-04	701601-04	701701-04	701801-03

NOTE: STANDARD DRAWINGS REQUIRED (CIRCLED).



FULL SIZE PLANS HAVE BEEN PREPARED USING STANDARD ENGINEERING SCALES. REDUCED SIZED PLANS WILL NOT CONFORM TO STANDARD SCALES. IN MAKING MEASUREMENTS ON REDUCED PLANS, THE ABOVE SCALES MAY BE USED.



PROJECT LOCATION

THIS IMPROVEMENT IS LOCATED  
IN THE VILLAGE OF PARK RIDGE

POSTED SPEED LIMIT = 40 MPH DEVON AVE.  
POSTED SPEED LIMIT = 35 MPH DEE RD.



STATE OF ILLINOIS  
DEPARTMENT OF TRANSPORTATION  
DIVISION OF HIGHWAYS

SUBMITTED Jan 29 20 07  
Diana M. O'Keefe  
DEPUTY DIRECTOR OF HIGHWAYS, REGION ENGINEER

March 23 20 07  
Eric E. Harshbarger  
ENGINEER OF DESIGN AND ENVIRONMENT

March 23 20 07  
Milton R. Sees, P.E.  
DIRECTOR OF HIGHWAYS, CHIEF ENGINEER

PRINTED BY THE AUTHORITY  
OF THE STATE OF ILLINOIS

PREPARED BY: Stacy Anderson  
TRAFFIC ENGINEER DATE June 25, 2007

CONTRACT NO. 60C09

BUREAU OF TRAFFIC: STEVE TRAVIA / DARYLE DREW 847-705-4420