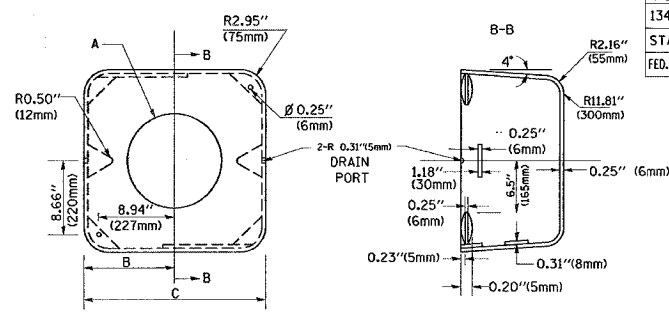
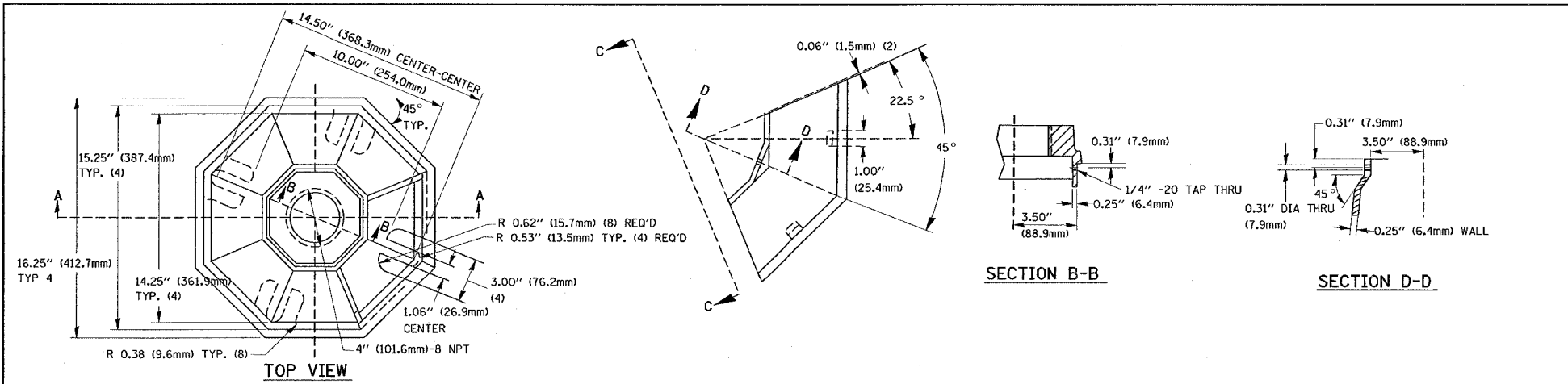
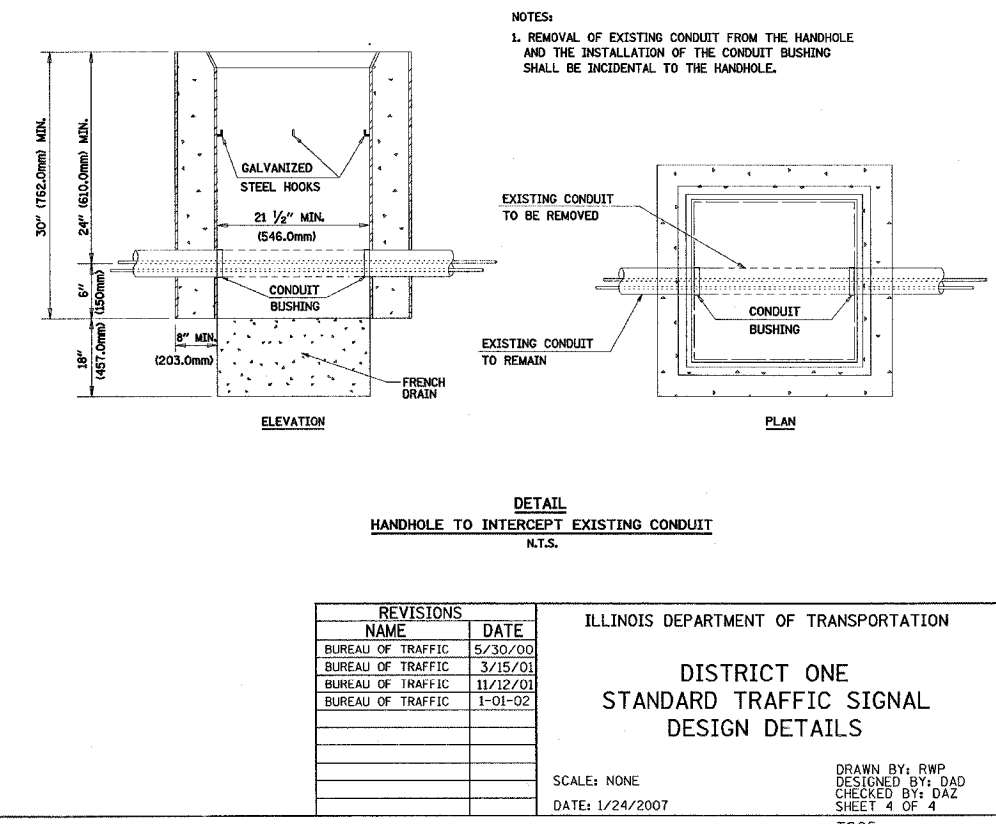
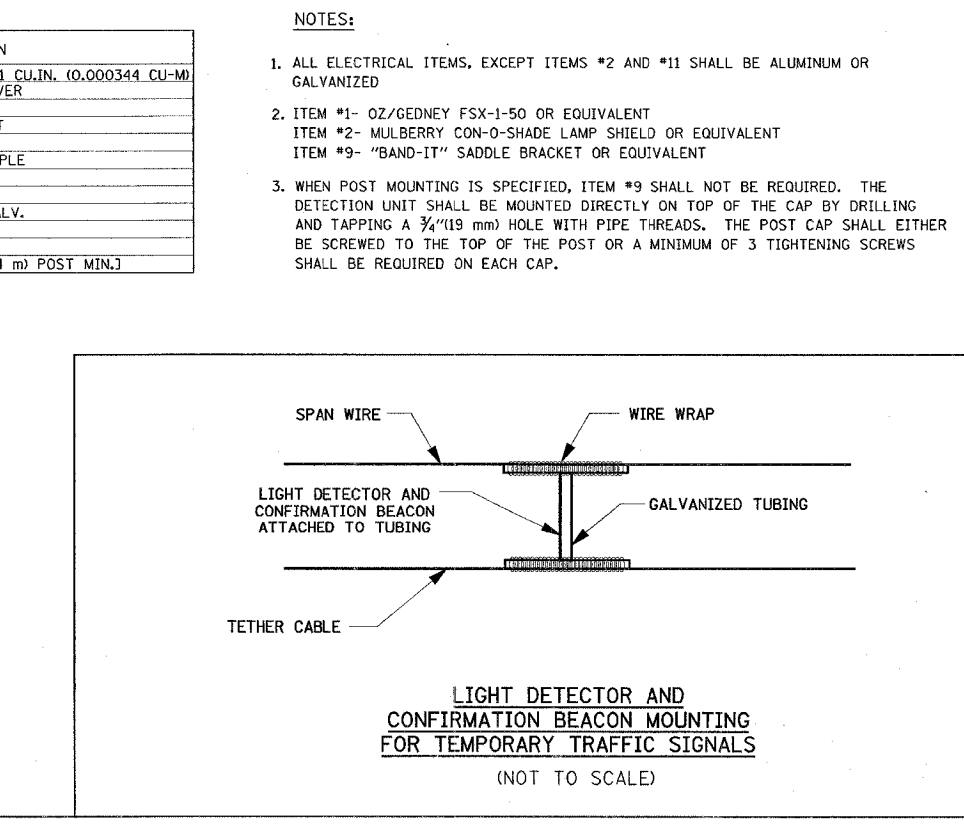
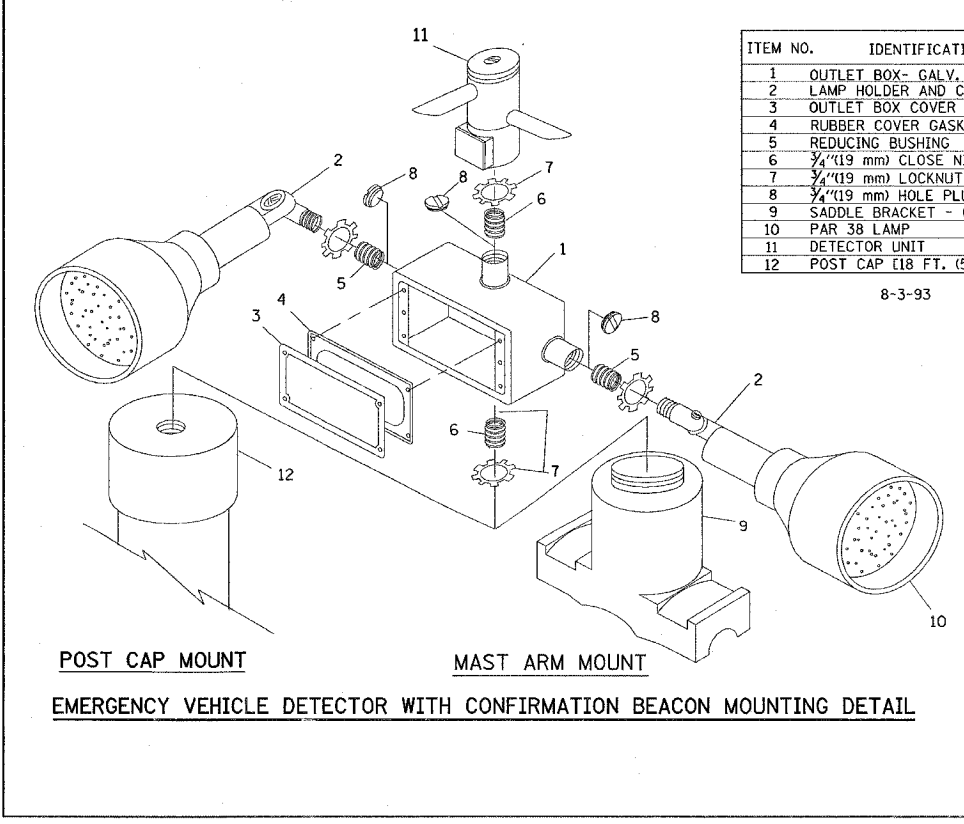
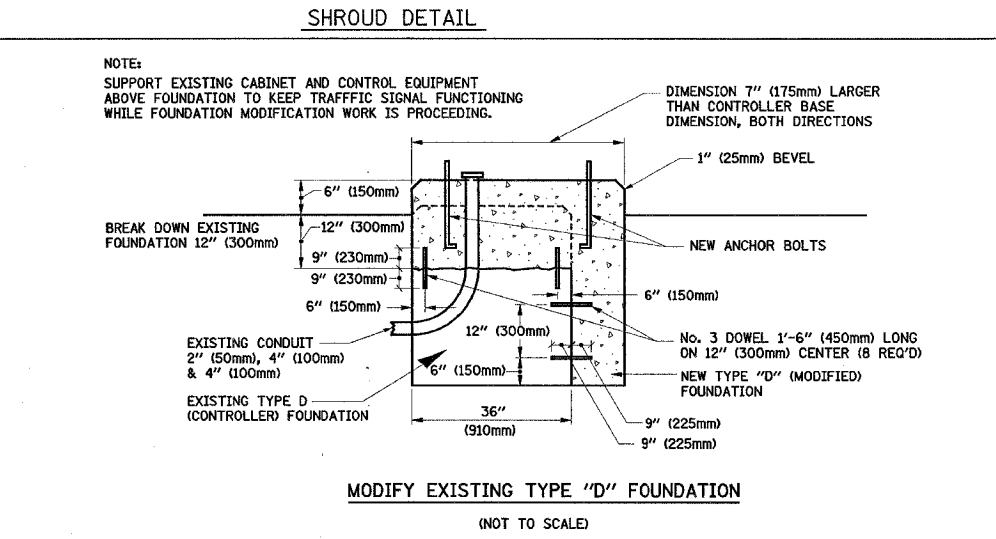
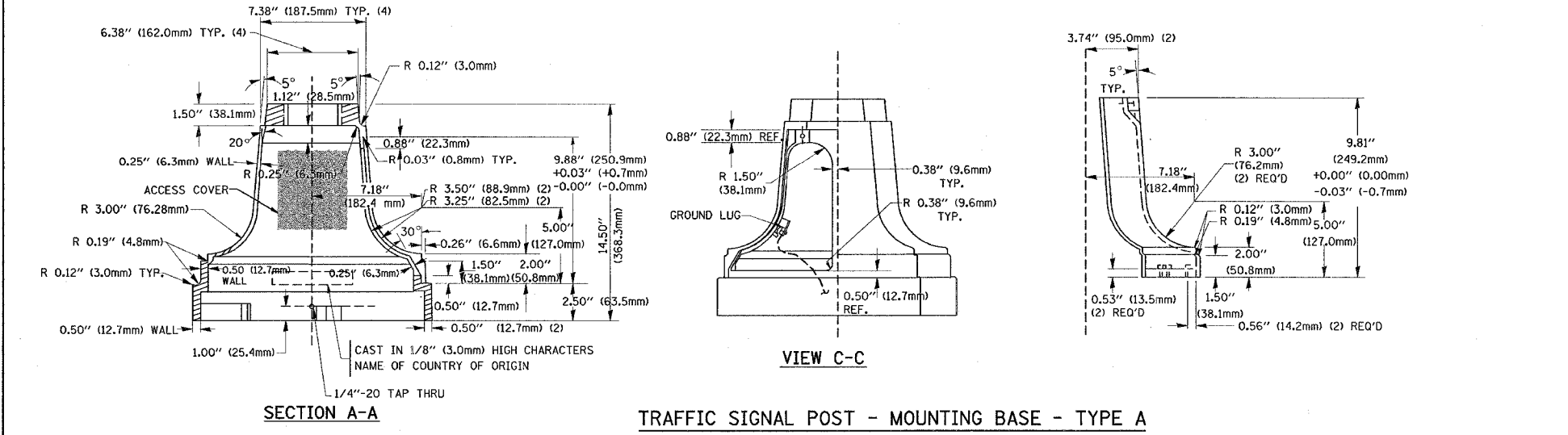


F.A.U. RTE.	SECTION	COUNTY	TOTAL SHEET
1349	2006-41 TS	COOK	12
STA.	TO STA.		7
FED. ROAD DIST. NO.	ILLINOIS FED. AID PROJECT		



TYPE	A	B	C	HEIGHT	WEIGHT
I	Ø 10.125\"(257mm)	9.5\"(241mm)	19\"(483mm)	12\"(300mm)	24kg
II	Ø 11.125\"(283mm)	10.75\"(273mm)	21.5\"(546mm)	12\"(300mm)	26kg

MATERIAL:
 - ASTM A48 CLASS 30 GREY IRON
 - ASTM A123 HOT DIPPED GALVANIZED



PLOT DATE = 1/24/2007
 FILE NAME = c:\projects\traff\c\6828013\dev\one.dgn
 PLOT SCALE = 80.0000 / IN.
 USER NAME = nguyen

ILLINOIS DEPARTMENT OF TRANSPORTATION
 DISTRICT ONE
 STANDARD TRAFFIC SIGNAL
 DESIGN DETAILS

SCALE: NONE
 DATE: 1/24/2007
 DRAWN BY: RWP
 DESIGNED BY: DAZ
 CHECKED BY: DAZ
 SHEET 4 OF 4