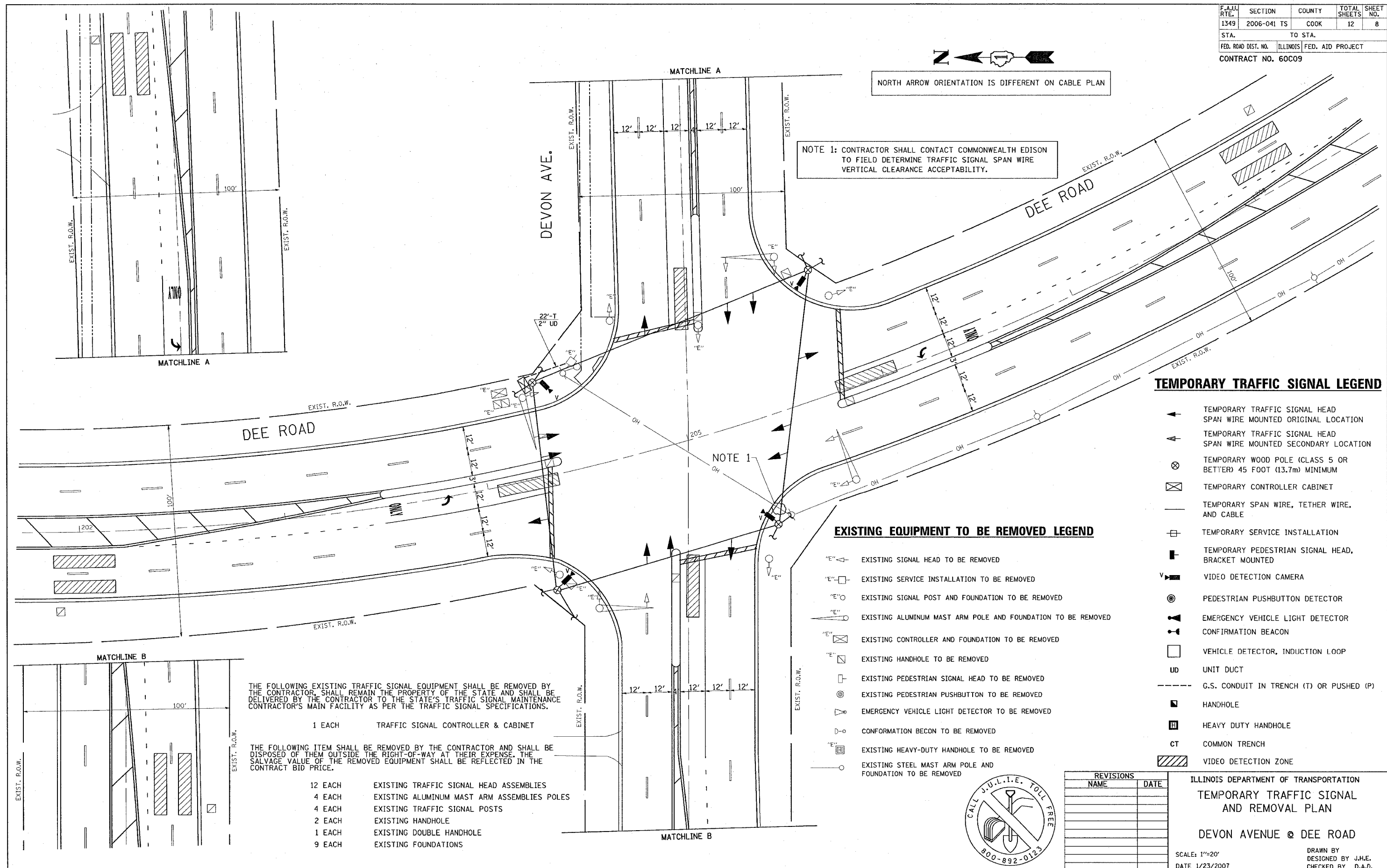


F.A.U. RTE.	SECTION	COUNTY	TOTAL SHEETS	SHEET NO.
1349	2006-041 TS	COOK	12	8
STA.		TO STA.		
FED. ROAD DIST. NO.		ILLINOIS	FED. AID PROJECT	
CONTRACT NO. 60C09				



NOTE 1: CONTRACTOR SHALL CONTACT COMMONWEALTH EDISON TO FIELD DETERMINE TRAFFIC SIGNAL SPAN WIRE VERTICAL CLEARANCE ACCEPTABILITY.



TEMPORARY TRAFFIC SIGNAL LEGEND

- ▲ TEMPORARY TRAFFIC SIGNAL HEAD SPAN WIRE MOUNTED ORIGINAL LOCATION
- ▲ TEMPORARY TRAFFIC SIGNAL HEAD SPAN WIRE MOUNTED SECONDARY LOCATION
- ⊗ TEMPORARY WOOD POLE (CLASS 5 OR BETTER) 45 FOOT (13.7m) MINIMUM
- ⊠ TEMPORARY CONTROLLER CABINET
- TEMPORARY SPAN WIRE, TETHER WIRE, AND CABLE
- ⊕ TEMPORARY SERVICE INSTALLATION
- ⊠ TEMPORARY PEDESTRIAN SIGNAL HEAD, BRACKET MOUNTED
- ▼ VIDEO DETECTION CAMERA
- ⊙ PEDESTRIAN PUSHBUTTON DETECTOR
- ⚡ EMERGENCY VEHICLE LIGHT DETECTOR CONFIRMATION BEACON
- VEHICLE DETECTOR, INDUCTION LOOP
- UD UNIT DUCT
- G.S. CONDUIT IN TRENCH (T) OR PUSHED (P)
- HANDHOLE
- ⊠ HEAVY DUTY HANDHOLE
- CT COMMON TRENCH
- ▨ VIDEO DETECTION ZONE

EXISTING EQUIPMENT TO BE REMOVED LEGEND

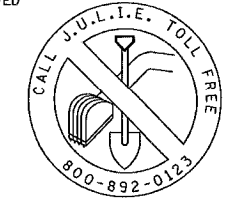
- ⊠ EXISTING SIGNAL HEAD TO BE REMOVED
- ⊠ EXISTING SERVICE INSTALLATION TO BE REMOVED
- ⊙ EXISTING SIGNAL POST AND FOUNDATION TO BE REMOVED
- ⊠ EXISTING ALUMINUM MAST ARM POLE AND FOUNDATION TO BE REMOVED
- ⊠ EXISTING CONTROLLER AND FOUNDATION TO BE REMOVED
- ⊠ EXISTING HANDHOLE TO BE REMOVED
- ⊠ EXISTING PEDESTRIAN SIGNAL HEAD TO BE REMOVED
- ⊙ EXISTING PEDESTRIAN PUSHBUTTON TO BE REMOVED
- ⚡ EXISTING EMERGENCY VEHICLE LIGHT DETECTOR TO BE REMOVED
- ⊙ EXISTING CONFIRMATION BEACON TO BE REMOVED
- ⊠ EXISTING HEAVY-DUTY HANDHOLE TO BE REMOVED
- ⊠ EXISTING STEEL MAST ARM POLE AND FOUNDATION TO BE REMOVED

THE FOLLOWING EXISTING TRAFFIC SIGNAL EQUIPMENT SHALL BE REMOVED BY THE CONTRACTOR, SHALL REMAIN THE PROPERTY OF THE STATE AND SHALL BE DELIVERED BY THE CONTRACTOR TO THE STATE'S TRAFFIC SIGNAL MAINTENANCE CONTRACTOR'S MAIN FACILITY AS PER THE TRAFFIC SIGNAL SPECIFICATIONS.

- 1 EACH TRAFFIC SIGNAL CONTROLLER & CABINET

THE FOLLOWING ITEM SHALL BE REMOVED BY THE CONTRACTOR AND SHALL BE DISPOSED OF THEM OUTSIDE THE RIGHT-OF-WAY AT THEIR EXPENSE. THE SALVAGE VALUE OF THE REMOVED EQUIPMENT SHALL BE REFLECTED IN THE CONTRACT BID PRICE.

- 12 EACH EXISTING TRAFFIC SIGNAL HEAD ASSEMBLIES
- 4 EACH EXISTING ALUMINUM MAST ARM ASSEMBLIES POLES
- 4 EACH EXISTING TRAFFIC SIGNAL POSTS
- 2 EACH EXISTING HANDHOLE
- 1 EACH EXISTING DOUBLE HANDHOLE
- 9 EACH EXISTING FOUNDATIONS



REVISIONS	
NAME	DATE

ILLINOIS DEPARTMENT OF TRANSPORTATION
TEMPORARY TRAFFIC SIGNAL AND REMOVAL PLAN
DEVON AVENUE @ DEE ROAD
 SCALE: 1"=20'
 DATE 1/23/2007
 DRAWN BY J.H.E.
 DESIGNED BY J.H.E.
 CHECKED BY D.A.D.