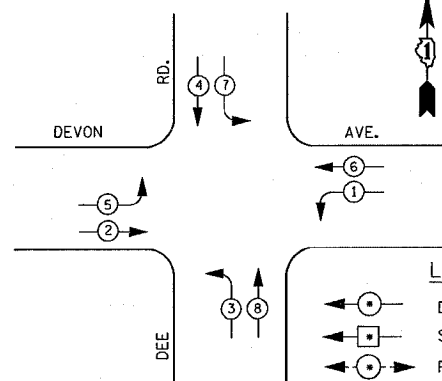


REF-
REF-
REF-

F.A.U. No.	SECTION	COUNTY	TOTAL SHEETS	SHEET NO.
1349	2006-041 TS	COOK	12	11
STA.	TO STA.			
FED. ROAD DIST. NO.	ILLINOIS FED. AID PROJECT			
CONTRACT NO. 60C09				

CONTROLLER SEQUENCE

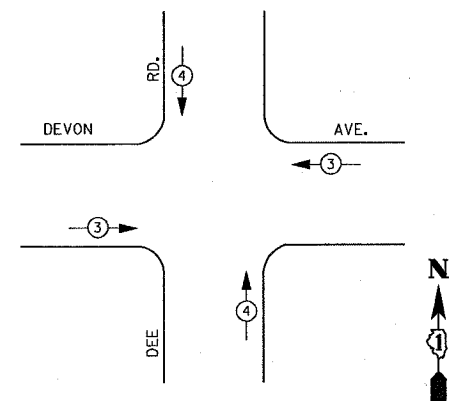


LEGEND

- ◀▶ DUAL ENTRY PHASE
- ◀▶ SPLIT PHASE
- ◀▶ PEDESTRIAN PHASE
- NUMBER REFERS TO ASSOCIATED PHASE

PHASE DESIGNATION DIAGRAM

EMERGENCY VEHICLE PREEMPTION SEQUENCE



PROPOSED EMERGENCY VEHICLE PREEMPTORS			
EMERGENCY VEHICLE PREEMPTOR	3	4	
MOVEMENT	←	→	↑

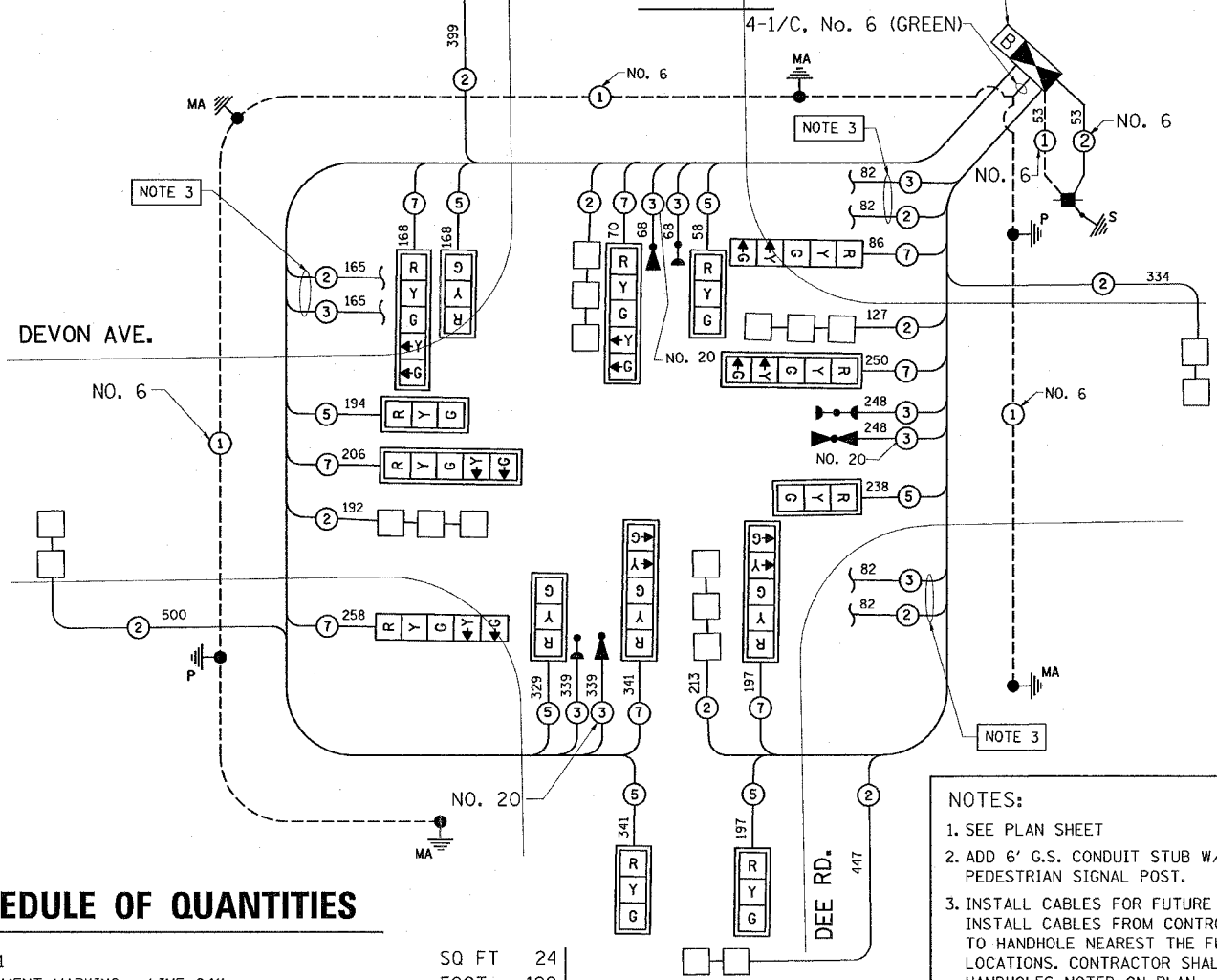
I.D.O.T TRAFFIC SIGNAL INSTALLATION ELECTRICAL SERVICE REQUIREMENTS					TOTAL WATTAGE
TYPE	NO. LAMPS	WATTAGE INCAND.	WATTAGE LED	% OPERATION	
SIGNAL (RED)	15	135	17	0.50	127.5
(YELLOW)	15	135	25	0.25	93.75
(GREEN)	15	135	15	0.25	56.25
ARROW	16	135	12	0.10	19.20
PED. SIGNAL		90	25	1.00	
CONTROLLER	1	100	100	1.00	100.00
ILLUM. SIGN		84		0.05	
FLASHER				0.50	
TOTAL =					396.70

ENERGY COSTS TO:
ILLINOIS DEPARTMENT OF TRANSPORTATION
201 WEST CENTER COURT
SCHAUMBURG, ILLINOIS 60196-1096
ENERGY SUPPLY CONTACT: LARRY SHANK
PHONE: (847) 816-5465
COMPANY: COMMONWEALTH EDISON

DESCRIPTION	UNIT	QUANTITY
SIGN PANEL - TYPE 1	SQ FT	24
THERMOPLASTIC PAVEMENT MARKING - LINE 24"	FOOT	120
THERMOPLASTIC PAVEMENT MARKING - REMOVAL	FOOT	130
CONDUIT IN TRENCH, 2" DIA., GALVANIZED STEEL	FOOT	1054
CONDUIT IN TRENCH, 2 1/2" DIA., GALVANIZED STEEL	FOOT	93
CONDUIT IN TRENCH, 3" DIA., GALVANIZED STEEL	FOOT	16
CONDUIT IN TRENCH, 4" DIA., GALVANIZED STEEL	FOOT	42
CONDUIT PUSHED, 2" DIA., GALVANIZED STEEL	FOOT	70
CONDUIT PUSHED, 4" DIA., GALVANIZED STEEL	FOOT	298
HANDHOLE	EACH	3
HEAVY-DUTY HANDHOLE	EACH	1
DOUBLE HANDHOLE	EACH	1
TRENCH AND BACKFILL FOR ELECTRICAL WORK	EACH	1169
FULL-ACTUATED CONTROLLER AND TYPE IV CABINET	EACH	1
ELECTRIC CABLE IN CONDUIT, SIGNAL NO.14 2C	FOOT	449
ELECTRIC CABLE IN CONDUIT, SIGNAL NO.14 3C	FOOT	1104
ELECTRIC CABLE IN CONDUIT, SIGNAL NO.14 5C	FOOT	1525
ELECTRIC CABLE IN CONDUIT, SIGNAL NO.14 7C	FOOT	1576
ELECTRIC CABLE IN CONDUIT, LEAD-IN NO.14 1 PAIR	FOOT	2282
ELECTRIC CABLE IN CONDUIT, SERVICE NO.6 2C	FOOT	53
ELECTRIC CABLE IN CONDUIT, GROUNDING NO.6 1C	FOOT	634
*ELECTRIC CABLE IN CONDUIT, NO.20 3/C, TWISTED, SHIELDED	FOOT	655
TRAFFIC SIGNAL POST, GALVANIZED STEEL 16 FT.	EACH	2
STEEL MAST ARM ASSEMBLY AND POLE, 24 FT.	EACH	2

FOUNDATION (DEPTH)	FT. (m)	CABLE SLACK	FT. (m)	VERTICAL	FT. (m)
TYPE A - POST	4 (1.2)	HANDHOLE	6.5 (2.0)	ALL FOUNDATIONS	3.5 (1.0)
D - CONTROLLER	4 (1.2)	DOUBLE HANDHOLE	13 (4.0)	MAST ARM (L) POLE	20' H-L-2" (6m-H-0.6m)=
E - M. ARM POLE		SIGNAL POST	2 (1.0)	BRACKET MOUNTED	13 (4.0)
24" (600mm)	10 (3.0)	CONTROLLER CAB.	1 (0.5)	PED. PUSHBUTTON	4 (1.2)
30" (750mm)	15 (4.6)	FIBER OPTIC	13 (4.0)	ELECTRIC SERVICE	13.5 (4.1)
36" (900mm)	15 (4.6)	ELECTRIC SERVICE	1 (0.5)	SERVICE TO GROUND	13.5 (4.1)
		GROUND CABLE	1 (0.5)	POST MOUNTED	6 (1.8)

CABLE PLAN



- NOTES:**
- SEE PLAN SHEET
 - ADD 6' G.S. CONDUIT STUB W/ GAP FOR FUTURE PEDESTRIAN SIGNAL POST.
 - INSTALL CABLES FOR FUTURE PEDESTRIAN SIGNALS & BUTTONS. INSTALL CABLES FROM CONTROLLER CABINET (DO NOT CONNECT) TO HANDHOLE NEAREST THE FUTURE PEDESTRIAN SIGNAL HEAD LOCATIONS. CONTRACTOR SHALL COIL 25 FT OF CABLE IN HANDHOLES NOTED ON PLAN.

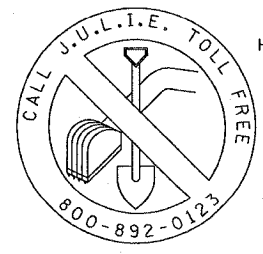
SCHEDULE OF QUANTITIES

STEEL MAST ARM ASSEMBLY AND POLE WITH DUAL MAST ARMS, 24 FT. AND 44 FT.	EACH	1
STEEL MAST ARM ASSEMBLY AND POLE WITH DUAL MAST ARMS, 30 FT. AND 42 FT.	EACH	1
CONCRETE FOUNDATION, TYPE A	FOOT	8
CONCRETE FOUNDATION, TYPE C	FOOT	4
CONCRETE FOUNDATION, TYPE E 30 INCH DIAMETER	FOOT	30
CONCRETE FOUNDATION, TYPE E 36 INCH DIAMETER	FOOT	30
DRILL EXISTING HANDHOLE	EACH	11
TRAFFIC SIGNAL BACKPLATE, LOUVERED ALUMINUM	EACH	13
INDUCTIVE LOOP DETECTOR	EACH	8
DETECTOR LOOP, TYPE 1	FOOT	656
*LIGHT DETECTOR	EACH	3
*LIGHT DETECTOR AMPLIFIER	EACH	1
TEMPORARY TRAFFIC SIGNAL INSTALLATION	EACH	1
UNINTERRUPTIBLE POWER SUPPLY, (UPS)	EACH	1
REMOVE ELECTRIC CABLE FROM CONDUIT	FOOT	1800
REMOVE EXISTING TRAFFIC SIGNAL EQUIPMENT	EACH	1
REMOVE EXISTING HANDHOLE	EACH	2
REMOVE EXISTING CONCRETE FOUNDATION	EACH	10
SIGNAL HEAD, L.E.D., 1-FACE, 3-SECTION MAST ARM MOUNTED	EACH	7
SIGNAL HEAD, L.E.D., 1-FACE, 3-SECTION BRACKET MOUNTED	EACH	2
SIGNAL HEAD, L.E.D., 1-FACE, 5-SECTION MAST ARM MOUNTED	EACH	6
SERVICE INSTALLATION, POLE MOUNT	EACH	1

* 100% TO CITY OF PARK RIDGE

CABLE PLAN LEGEND

- | | | |
|----------|----------|-------------------------------------------------------------------------------------------------------------|
| EXISTING | PROPOSED | |
| | | 8" (200mm) TRAFFIC SIGNAL SECTION |
| | | 12" (300mm) TRAFFIC SIGNAL SECTION |
| | | 12" (300mm) PEDESTRIAN SIGNAL SECTION |
| | | 12" (300mm) PEDESTRIAN SIGNAL SECTION |
| | | CONTROLLER CABINET |
| | | SERVICE INSTALLATION |
| | | TELEPHONE INSTALLATION |
| | | VEHICLE DETECTOR, INDUCTION LOOP |
| | | MAGNETIC DETECTOR |
| | | EMERGENCY VEHICLE LIGHT DETECTOR |
| | | CONFIRMATION BEACON |
| | | PUSHBUTTON DETECTOR |
| | | DENOTES NUMBER OF CONDUCTORS, ALL CABLE NO. 14 EXCEPT AS INDICATED. ALL LOOP DETECTOR CABLE TO BE SHIELDED. |
| | | GROUND CABLE IN CONDUIT NO. 6 SOLID COPPER (GREEN) |
| | | FIBER OPTIC CABLE IN CONDUIT NO. 62.5/125 2-MM12F SM12F |
| | | SIGNAL FACE WITH BACKPLATE, "P" INDICATES PROGRAMMED HEAD |
| | | RAILROAD CONTROL CABINET |
| | | ILLUMINATED SIGN "NO LEFT TURN" |
| | | ILLUMINATED SIGN "NO RIGHT TURN" |
| | | GROUND ROD AT HANDHOLE (H), DOUBLE HANDHOLE (H), OR CONTROLLER (C). |
| | | GROUND ROD AT POST (P), OR MAST ARM POLE (MA). |
| | | GROUND ROD AT ELECTRIC SERVICE INSTALLATION |
| | | BATTERY BACK-UP UNIT |



REVISIONS	
NAME	DATE

ILLINOIS DEPARTMENT OF TRANSPORTATION
TRAFFIC SIGNAL CABLE PLAN
PHASE DESIGNATION DIAGRAM
SCHEDULE OF QUANTITIES
DEVON & DEE RD
SCALE: NONE
DATE: DECEMBER 2006
DRAWN BY: BCK
DESIGNED BY: SPB
CHECKED BY: DAD

16:51:17 01/23/2007