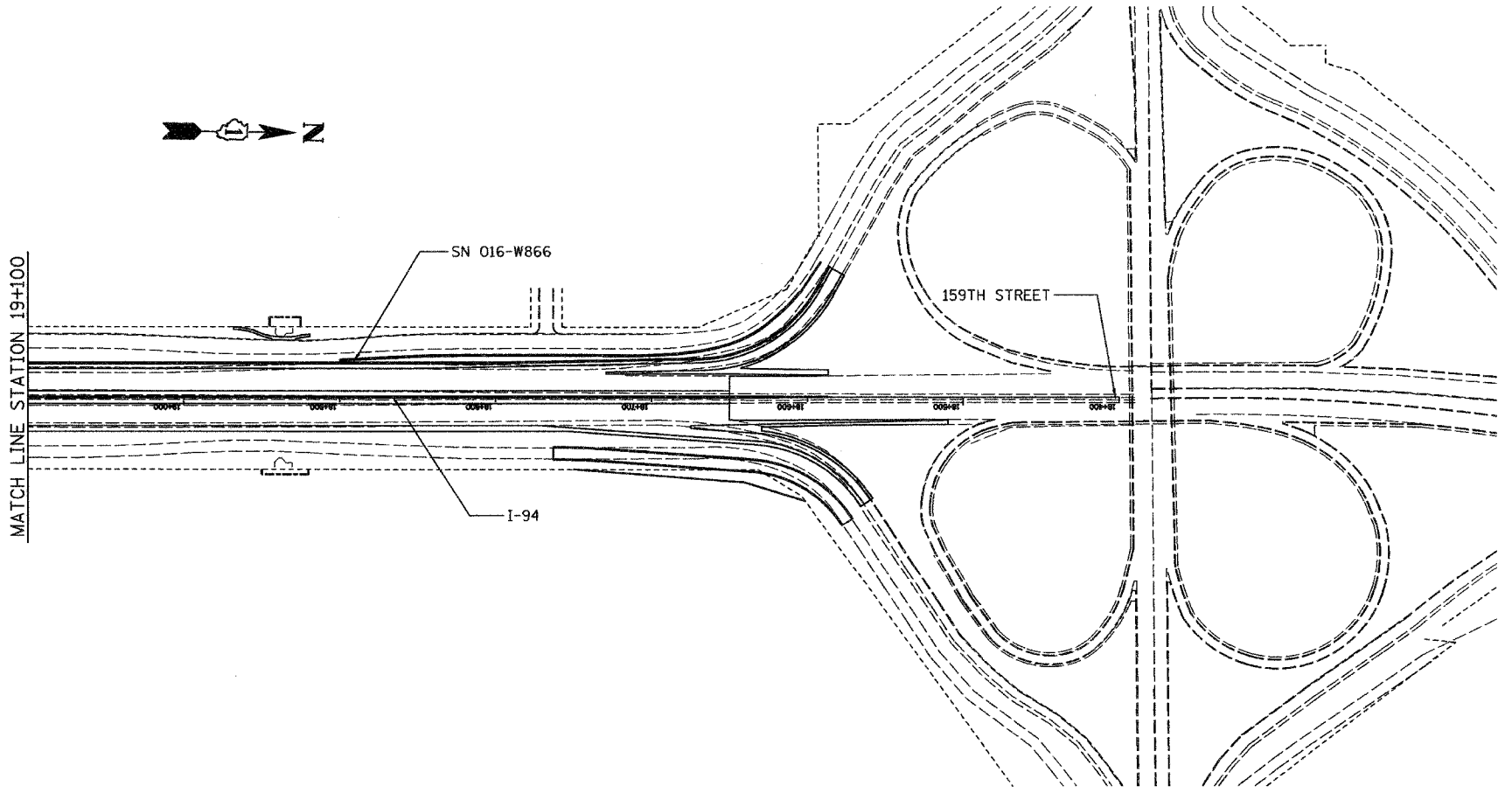
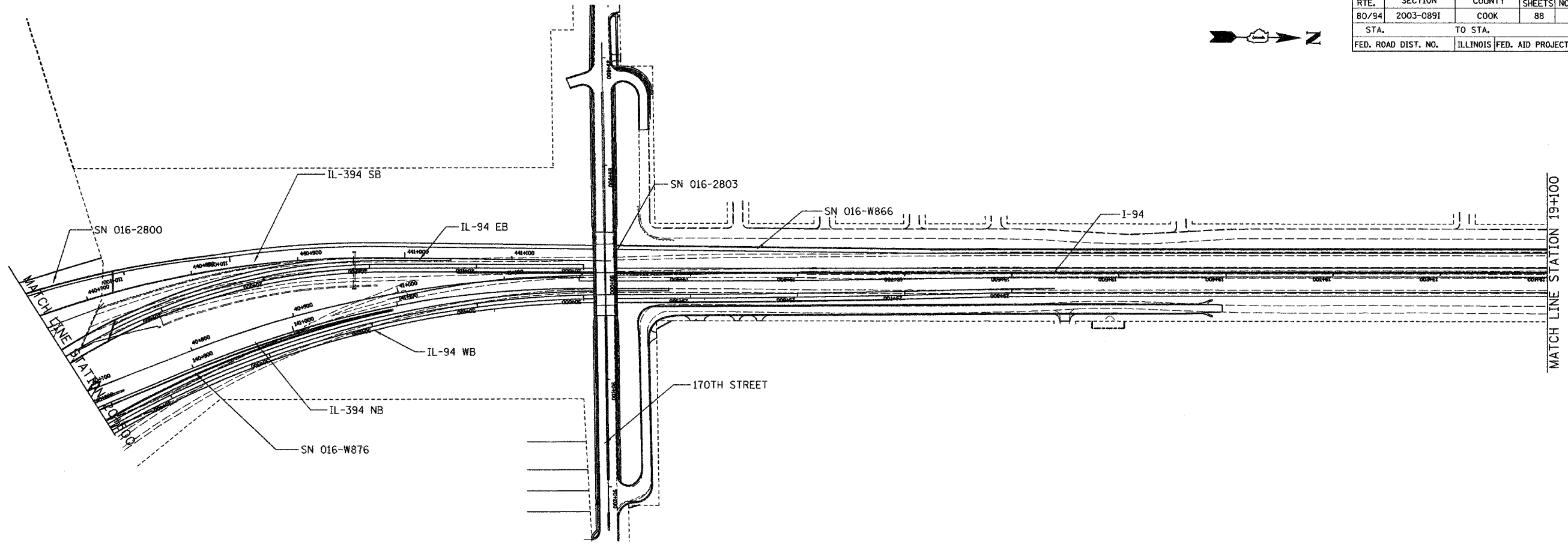


F.A.I. RTE.	SECTION	COUNTY	TOTAL SHEETS	SHEET NO.
80/94	2003-089I	COOK	88	86
STA.		TO STA.		
FED. ROAD DIST. NO.		ILLINOIS	FED. AID PROJECT	



FOR INFORMATION ONLY

REVISIONS	
NAME	DATE

ILLINOIS DEPARTMENT OF TRANSPORTATION
 I-80/94/US 6 (KINGERY EXPRESSWAY)
 ROADWAY LIGHTING
 AND TRAFFIC SURVEILLANCE

STRUCTURE LOCATION PLAN
 STA. 20 + 500 TO STA. 18 + 400

SCALE 1:2000
 DATE 12/03

DRAWN BY ACE/CAD
 CHECKED BY TJW