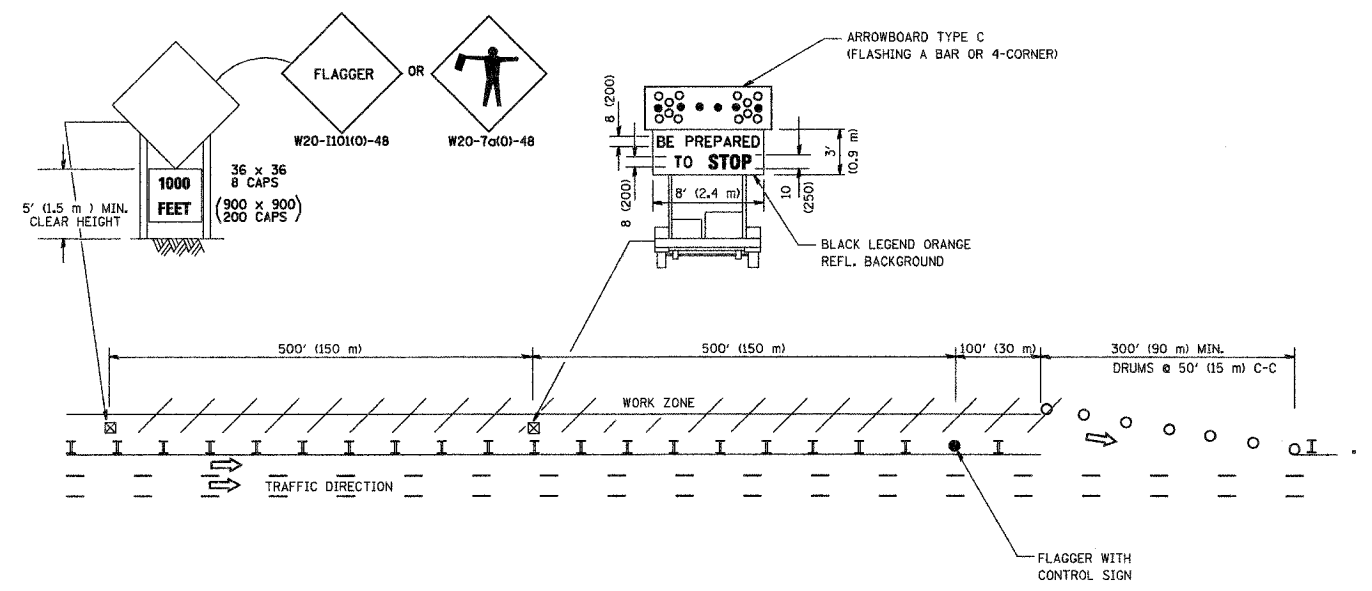


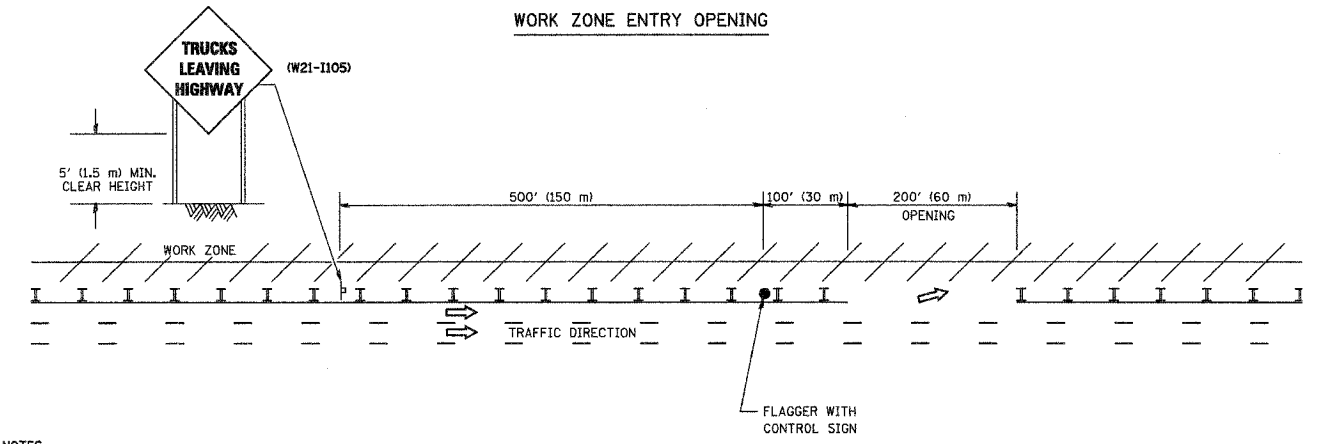
F.A.F. RTE.	SECTION	COUNTY	TOTAL SHEETS	SHEET NO.
80/94	2003-106 LS	COOK	88	88B
STA.		TO STA.		
FED. ROAD DIST. NO.	ILLINOIS	FED. AID PROJECT		

SIGNING FOR FLAGGING OPERATIONS AT WORK ZONE OPENINGS

WORK ZONE EXIT OPENING



WORK ZONE ENTRY OPENING



NOTES:

1. The Arrowboard, the Flagger Ahead trailer mounted sign, and the Trucks Leaving Highway sign shall be removed or turned away from traffic and the exit and entry openings shall be closed when the flagging operation ceases.
2. Work Zone Exit Openings should be a minimum of one half mile apart.
3. Exiting the work zone at any place other than at a Work Zone Exit Opening will be prohibited.
4. All vehicles shall enter the work zone at entry openings, using their turn signals to warn motorists

ALL DIMENSIONS ARE IN INCHES (MILLIMETERS) UNLESS OTHERWISE SHOWN

REVISIONS	
NAME	DATE
DWS	8/98
JAF	4/03
JAF	2/06
SPB	1/07

ILLINOIS DEPARTMENT OF TRANSPORTATION  
 SIGNING FOR FLAGGING OPERATIONS AT WORK ZONE OPENINGS  
 SCALE: NONE  
 DATE: 12/26/2006  
 DRAWN BY CADD  
 CHECKED BY  
 TC-18  
 REVISION DATE: 02/28/06

PLOT DATE = 12/26/2006  
 PLOT SCALE = 3/4" = 1'-0"  
 USER NAME = tkankar