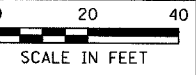


F.A.P. RTE.	SECTION	COUNTY	TOTAL SHEETS	SHEET NO.
567	34X-BR	DEKALB	90	18
STA. 138+00		TO STA. 144+00		
ILLINOIS FED. AID PROJECT				



LASALLE TRUST
B7711787801



DESIGN	DATE	REASON

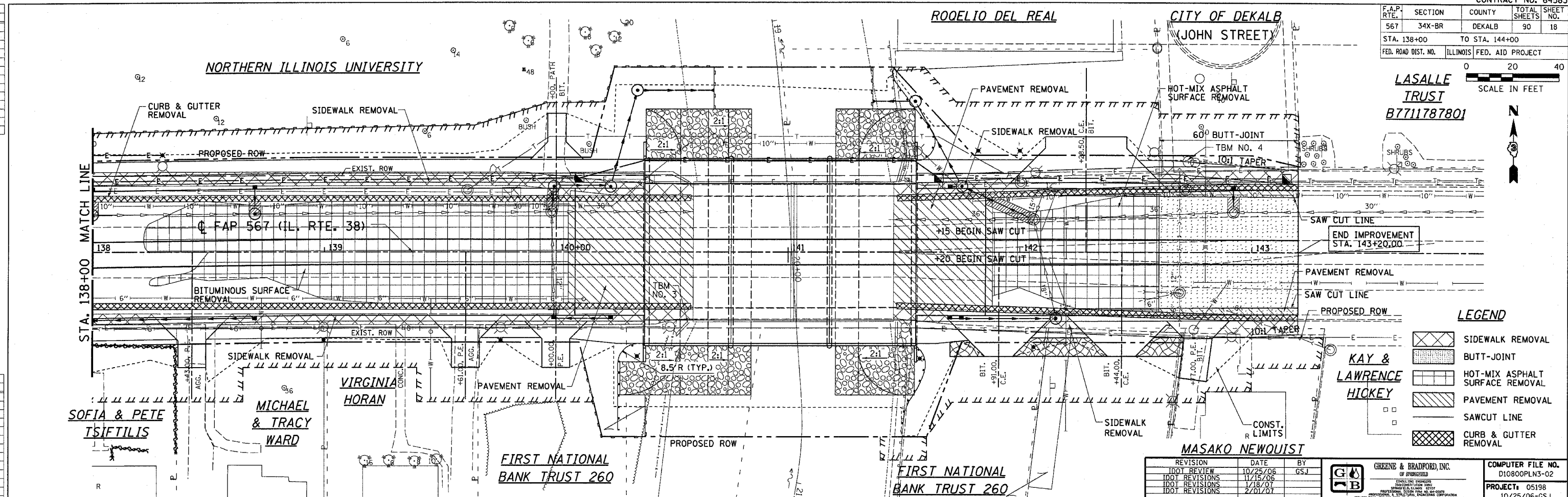
DATE	BY	REASON

PLOTS & CHECKS	INT. DATE	NO.	REASON

DATE	BY	REASON

CHECKS	INT. DATE	REASON

FILE NAME = c:\projects\ve20060\010800pln3.dgn
 PLOT SCALE = 1/8" = 1'-0"
 PLOT DATE = 2/22/2007
 PLOT TIME = 11:56:58
 OPERATOR = \$USERS\$

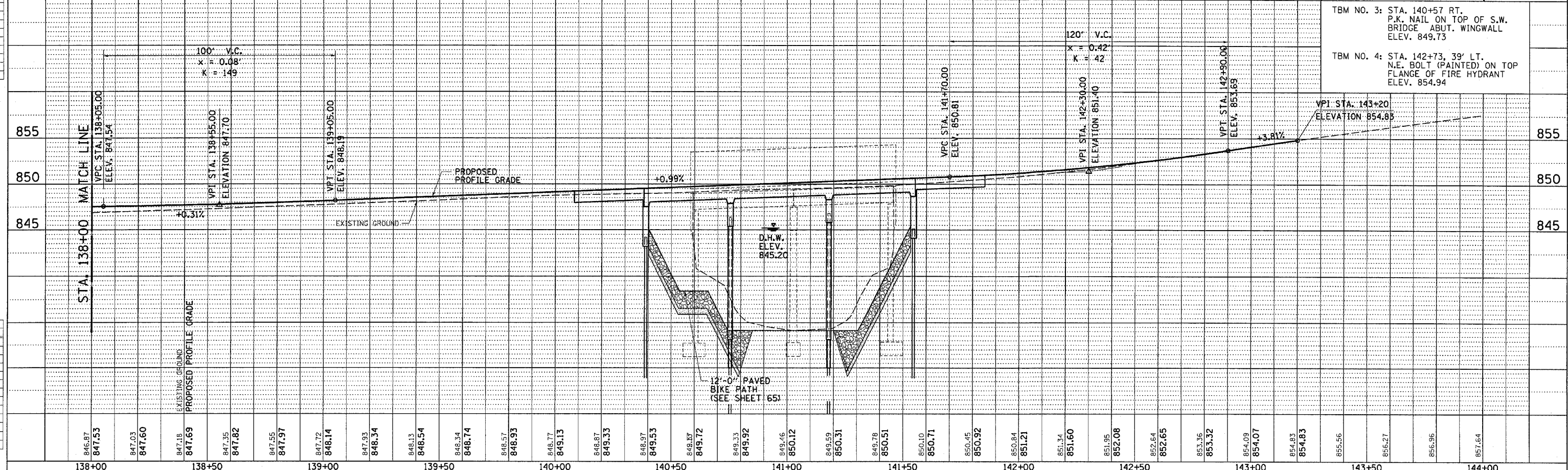


LEGEND

	SIDEWALK REMOVAL
	BUTT-JOINT
	HOT-MIX ASPHALT SURFACE REMOVAL
	PAVEMENT REMOVAL
	SAWCUT LINE
	CURB & GUTTER REMOVAL

REVISION	DATE	BY
DOT REVIEW	10/25/06	GSJ
DOT REVISIONS	11/15/06	
DOT REVISIONS	1/18/07	
DOT REVISIONS	2/01/07	

	GREENE & BRADFORD, INC. OF BRADFORD	COMPUTER FILE NO. D10800PLN3-02
PROJECT: 05198		10/25/06-GSJ



TBM NO. 3: STA. 140+57 RT.
 P.K. NAIL ON TOP OF S.W.
 BRIDGE ABUT. WINGWALL
 ELEV. 849.73

TBM NO. 4: STA. 142+73, 39' LT.
 N.E. BOLT (PAINTED) ON TOP
 FLANGE OF FIRE HYDRANT
 ELEV. 854.94

138+00 138+50 139+00 139+50 140+00 140+50 141+00 141+50 142+00 142+50 143+00 143+50 144+00

REMOVAL AND ADJUSTMENT PLAN AND PROFILE