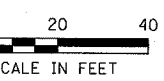


F.A.P. RTE.	SECTION	COUNTY	TOTAL SHEETS	SHEET NO.
567	34X-BR	DEKALB	90	22

STA. 138+00 TO STA. 144+00
 FED. ROAD DIST. NO. ILLINOIS FED. AID PROJECT



DESIGN	INT.	DATE	REASON

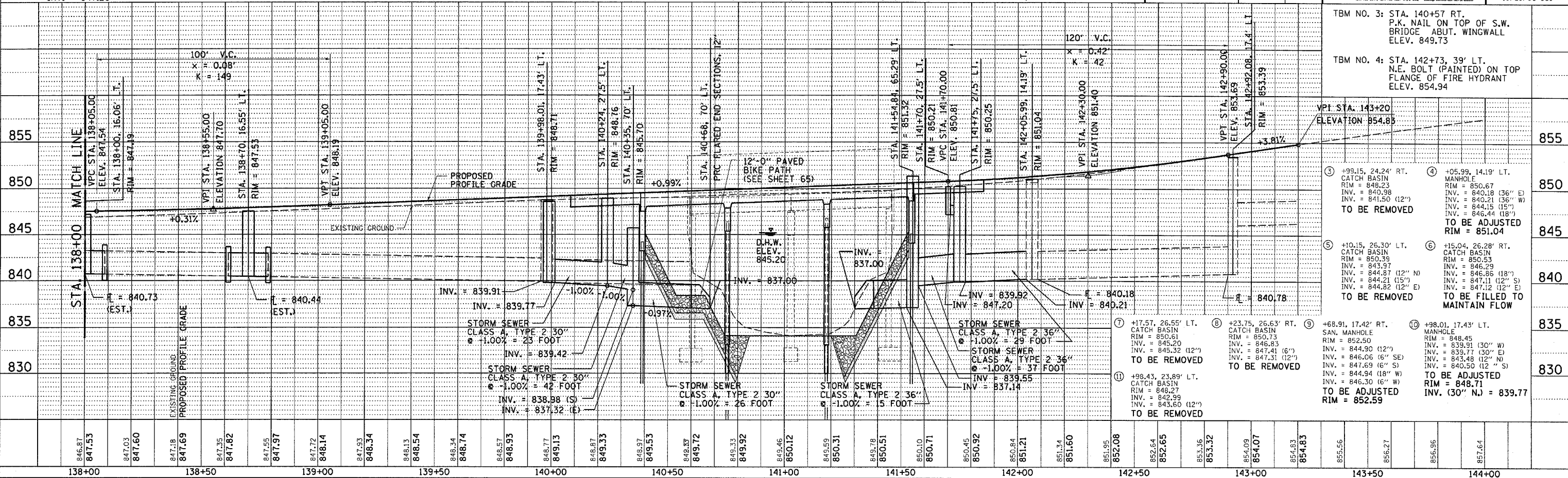
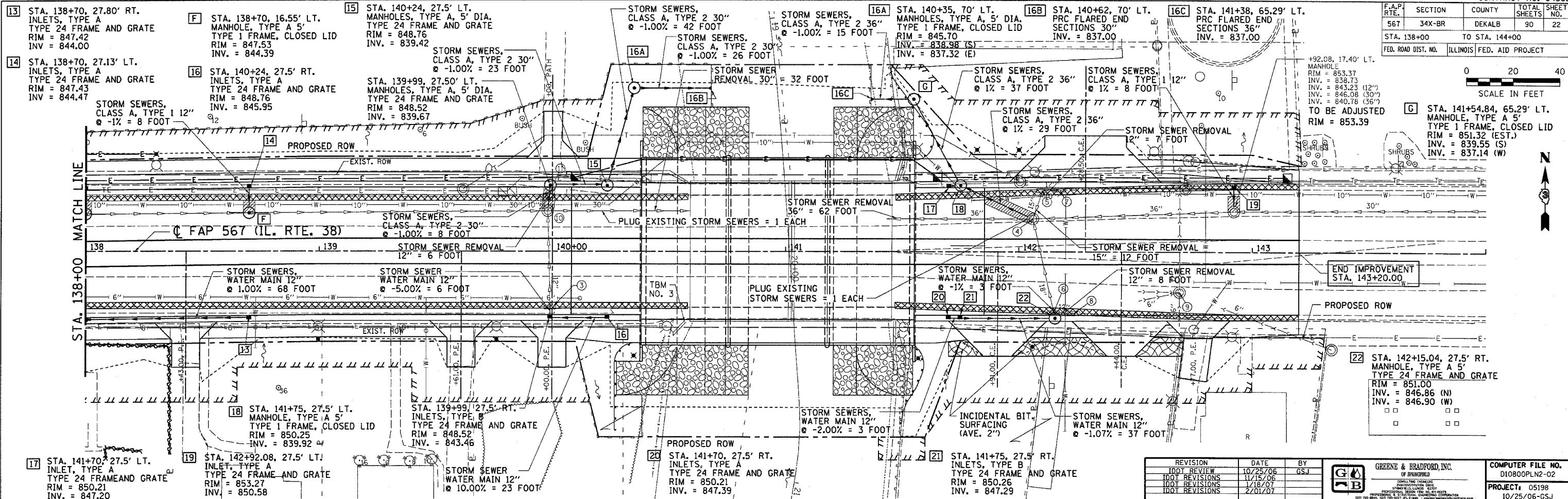
PLAN	DATE	BY	REASON

PLOTS & CHECKS	INT.	DATE	NO.	REASON

PROFILE	DATE	BY	REASON

CHECKS	INT.	DATE	REASON

IDOTPP-20 - 120 8/07/00



REVISION	DATE	BY
100% REVIEW	10/25/06	GSJ
100% REVISIONS	11/15/06	
100% REVISIONS	1/18/07	
100% REVISIONS	2/01/07	

GREENE & BRADFORD, INC. CORPORATE OFFICE 1000 N. WASHINGTON ST., SUITE 100 DEKALB, IL 62521-1000 TEL: 217-244-3800 FAX: 217-244-3801	COMPUTER FILE NO. D1080PLN2-02	PROJECT: 05198 10/25/06-GSJ
---	--	---------------------------------------

TBM NO. 3: STA. 140+57 RT. P.K. NAIL ON TOP OF S.W. BRIDGE ABUT. WINGWALL ELEV. 849.73

TBM NO. 4: STA. 142+73, 39' LT. N.E. BOLT (PAINTED) ON TOP FLANGE OF FIRE HYDRANT ELEV. 854.94

③ +99.15, 24.24' RT. CATCH BASIN RIM = 848.23 INV. = 840.98 INV. = 841.50 (12") TO BE REMOVED	④ +05.99, 14.19' LT. MANHOLE RIM = 850.67 INV. = 840.18 (36" E) INV. = 840.21 (36" W) INV. = 844.15 (15") INV. = 846.44 (18") TO BE ADJUSTED RIM = 851.04	⑤ +10.15, 26.30' LT. CATCH BASIN RIM = 850.39 INV. = 843.97 INV. = 844.87 (12" N) INV. = 844.21 (15") INV. = 844.82 (12" E) TO BE REMOVED	⑥ +15.04, 26.28' RT. CATCH BASIN RIM = 850.53 INV. = 846.29 INV. = 846.86 (18" N) INV. = 847.11 (12" S) INV. = 847.12 (12" E) TO BE FILLED TO MAINTAIN FLOW	⑦ +17.57, 26.55' LT. CATCH BASIN RIM = 850.61 INV. = 845.32 (12") TO BE REMOVED	⑧ +23.75, 26.63' RT. CATCH BASIN RIM = 850.73 INV. = 846.83 INV. = 847.41 (6") INV. = 847.31 (12") TO BE REMOVED	⑨ +68.91, 17.42' RT. SAN. MANHOLE RIM = 852.50 INV. = 844.30 (12") INV. = 846.06 (6" S) INV. = 847.69 (6" S) INV. = 844.94 (18" W) INV. = 846.30 (6" W) TO BE ADJUSTED RIM = 852.59	⑩ +98.01, 17.43' LT. MANHOLE RIM = 848.45 INV. = 839.91 (30" W) INV. = 839.77 (30" E) INV. = 843.48 (12" S) INV. = 840.50 (12" S) TO BE ADJUSTED RIM = 848.71 INV. (30" N.) = 839.77
---	--	---	---	--	---	---	--

DRAINAGE PLAN AND PROFILE