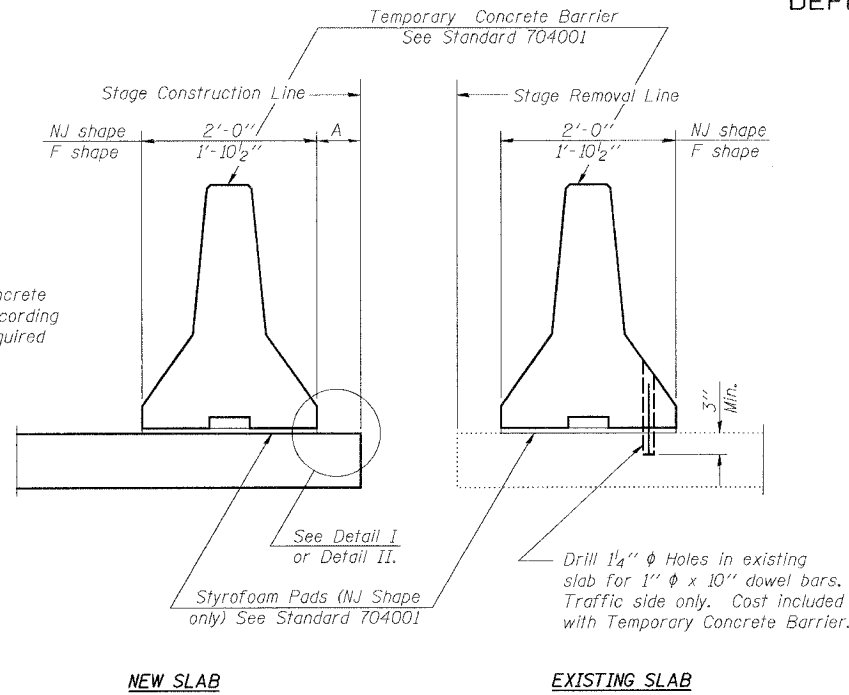


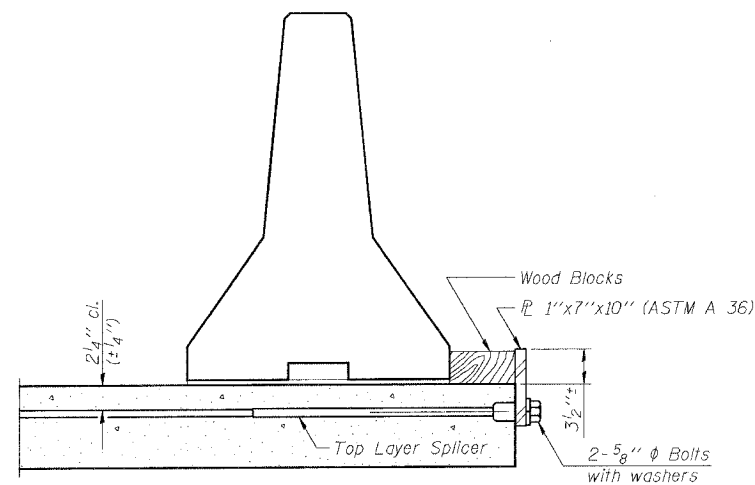
STATE OF ILLINOIS
DEPARTMENT OF TRANSPORTATION

ROUTE NO.	SECTION	COUNTY	SHEET NO.	SHEET	SHEET NO. 4
FAU 567 (IL 38)	34-XBR	DEKALB	90	35	14 SHEETS
FED. ROAD DIST. NO.	ILLINOIS	FED. AID PROJECT			

Contract No. 64583

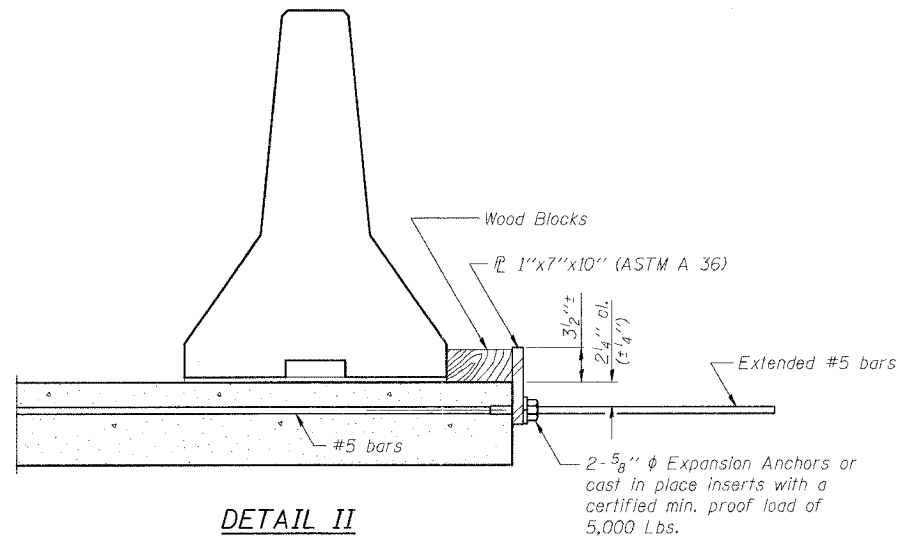


SECTIONS THRU SLAB



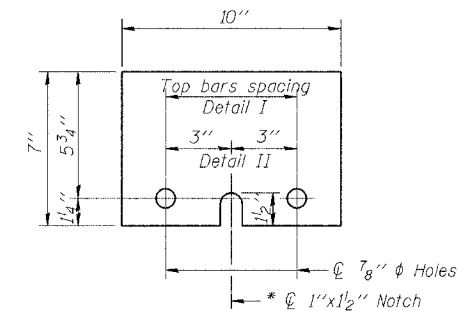
DETAIL I

The 1" x 7" x 10" Plate shall not be removed until
Stage II Construction forms and reinforcement bars
are in place.



DETAIL II

The 1" x 7" x 10" Plate shall not be removed until
Stage II Construction forms and all reinforcement
bars are in place and the concrete is ready to be
placed.



1" x 7" x 10"

* Required only with Detail II

NOTES

- Detail I - With Bar Splicer or Couplers:
Connect one (1) 1" x 7" x 10" steel \bar{L} to the
top layer of couplers with 2-5/8" ϕ bolts
screwed to coupler at approximate ϕ of
each barrier panel.
- Detail II - With Extended Reinforcement Bars:
Connect one (1) 1" x 7" x 10" steel \bar{L} to the
concrete slab with 2-5/8" ϕ Expansion Anchors
or cast in place inserts spaced between the
top layer of reinforcement at approximate ϕ of
each barrier panel.
- Cost of anchorage is included with Temporary Concrete Barrier.

FILE NAME = J:\05198\DRAWINGS\SN019-0044\SN019-0044.dgn
PLOT SCALE = 1:10000
PLOT DATE = 12/4/2006
OPERATOR = MGR061

R-27

10-22-04

REVISIONS	
NAME	DATE

ILLINOIS DEPARTMENT OF TRANSPORTATION
**TEMPORARY CONCRETE BARRIER
FOR STAGE CONSTRUCTION**

F.A.U. ROUTE 567 (IL 38) OVER
SOUTH BRANCH OF THE KISHWAUKEE RIVER
DEKALB COUNTY - SEC. 34-XBR
STA. 140+96.71
S.N. 019-0044

SCALE: VERT.
HORIZ.
DATE: 7/6/05

DRAWN BY: LANDREY
DESIGNED BY: TRELLO
CHECKED BY: SANFORD

<p>GREENE & BRADFORD, INC. OF SPRINGFIELD</p>	COMPUTER FILE NO. SN019-0044;TCB
	PROJECT 05198 12/4/06-MML