

STATE OF ILLINOIS
DEPARTMENT OF TRANSPORTATION

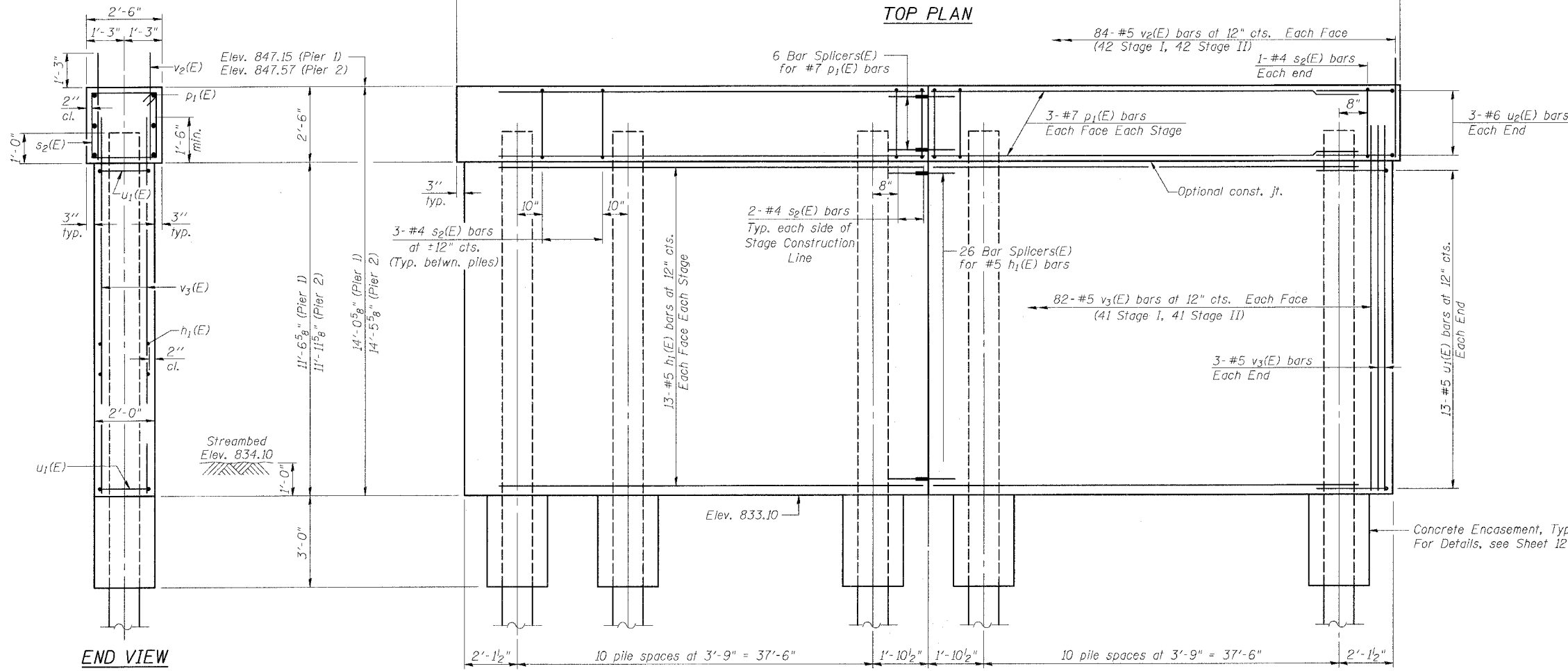
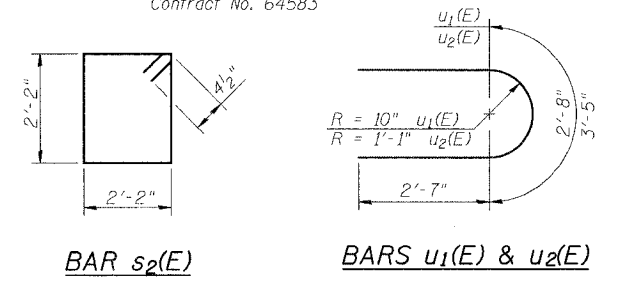
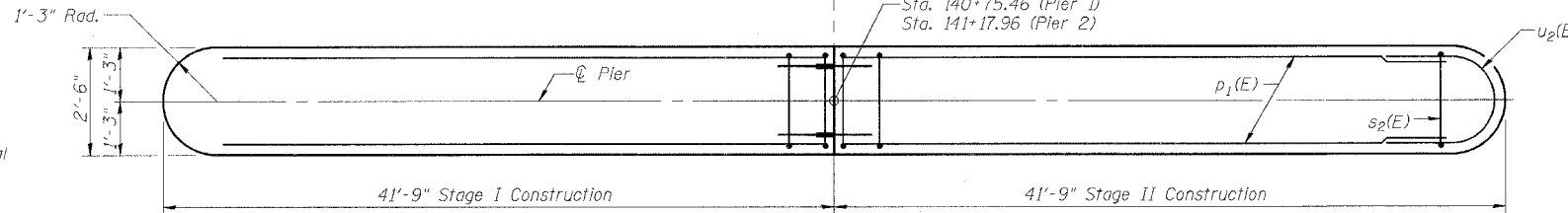
ROUTE NO. FAU 567 (IL 38)	SECTION 34-XBR	COUNTY DEKALB	TOTAL SHEETS 90	SHEET NO. 41	SHEET NO. 10 14 SHEETS
FED. ROAD DIST. NO.		ILLINOIS	FED. AID PROJECT		

Contract No. 64583

PILE DATA

Type and Size: Metal Shell - 12 in. dia. x 0.179 in. walls
Nominal Required Bearing: 258 kips
Allowable Resistance Available: 86 kips
Estimated Length: 60 feet

Note:
The Metal Shell piles shall be according to ASTM A 252 Grade 3.
The test piles shall be driven to 110 percent of the Nominal Required Bearing indicated in the pile data information.



* For Concrete Encasement details, see sheet 12 of 14.

**TWO PIERS
BILL OF MATERIAL**

Bar	No.	Size	Length	Shape
$h_1(E)$	104	#5	40'-3"	—
$p_1(E)$	24	#7	40'-3"	—
$s_2(E)$	132	#4	9'-5"	□
$u_1(E)$	52	#5	7'-10"	U
$u_2(E)$	12	#6	8'-7"	U
$v_2(E)$	336	#5	3'-7"	—
$v_3(E)$	340	#5	13'-3"	—
Concrete Structures			Cu. Yd.	183.3
Reinforcement Bars, Epoxy Coated			Pound	13,700
Furnishing Metal Shell Piles, 12"			Foot	2580
Structure Excavation			Cu. Yd.	20
Driving Piles			Foot	2580
Test Pile Metal Shells			Each	1

Reinforcement Bars designated (E) shall be epoxy coated.

ILLINOIS DEPARTMENT OF TRANSPORTATION

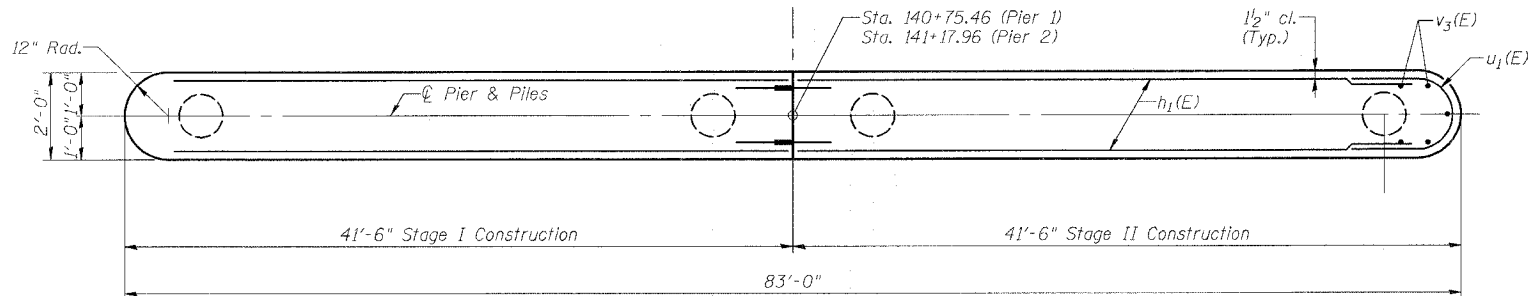
PIERS

F.A.U. ROUTE 567 (IL 38) OVER SOUTH BRANCH OF THE KISHWAUKEE RIVER DEKALB COUNTY - SEC. 34-XBR STA. 140+96.71 S.N. 019-0044

SCALE: VERT. HORIZ. DATE: 7/6/05
DRAWN BY: LANDREY DESIGNED BY: TRELLO CHECKED BY: SANFORD

GREENE & BRADFORD, INC. OF SPRINGFIELD
REGISTERED PROFESSIONAL ENGINEERS
PROJECT NO. 05198
12/4/06-MML

REVISIONS	
NAME	DATE



SECTION B-B

FILE NAME = I:\0568\0568\WORKS\SNO19_0044\PIERS_0044.dgn
 PLOT SCALE = 1:3000
 PLOT DATE = 12/4/2006
 PLOT TIME = 11:57:11 PM
 OPERATOR = michiel