

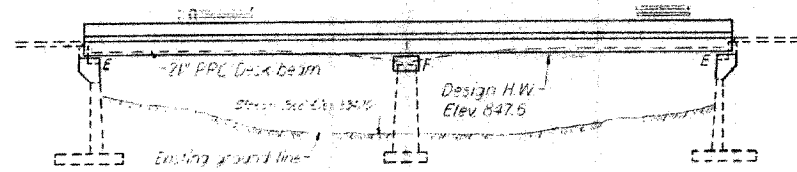
F.A.P. RTE.	SECTION	COUNTY	TOTAL SHEETS	SHEET NO.
567	34X-BR	DEKALB	90	47
STA.		TO STA.		
FED. ROAD DIST. NO.		ILLINOIS FED. AID PROJECT		

DATE	REVISION	BY	NO.	DESCRIPTION
15	5			

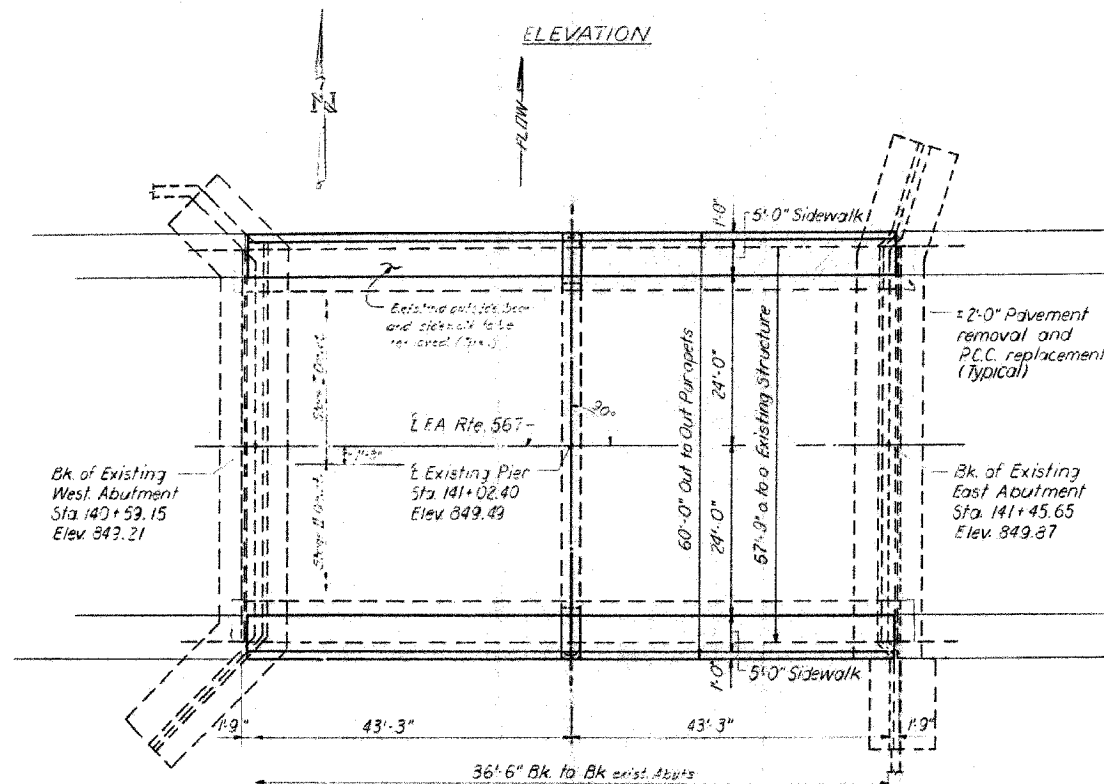
SHEET NO. 1  
9 SHEETS

STATE OF ILLINOIS  
DEPARTMENT OF TRANSPORTATION

Benchmark: Metal rivet on S.E. Abutment wing wall right of Station 141+46.00. Elev 850.08.  
Existing Structure: Two span cont. parallel RC Deck Girder Bridge.  
Fascia girders to be removed and replaced with two P.P.C. deck beams, using stage construction.



ELEVATION



PLAN

STATION 141+02.40  
REBUILT BY  
STATE OF ILLINOIS  
FA. 567 SEC. 34X-BY  
FA. PROJ. F567(19)  
LOADING HS20  
STR. NO.

NAME PLATE  
(See Sta. 2113)

\*\* Structure Number to be supplied by District.

GENERAL NOTES

It shall be the responsibility of the Contractor to verify all dimensions and conditions existing in the field prior to construction and ordering of materials.

Expansion bolts shall consist of self-drilling expansion anchors and 3/8" hooked bolts. Hooked bolts shall extend a minimum of 12" into new concrete unless otherwise shown.

The concrete rail section above the mandatory construction joint at the top of the slab shall be constructed of Class X concrete, except the aggregates shall conform to the requirements of Handrail Concrete.

Limits of waterproofing membrane system shall be back to back of abutments.

Protective Coat shall not be applied to surfaces to which Waterproofing Membrane System is applied.

The top surface of the beams shall be finished in accordance with Article 505.06 of the Standard Specifications except that the surface shall not be roughened by brooming. The finished surface shall be free of depressions or high spots with sharp corners.

Reinforcement bars shall conform to the requirements of AASHTO M 31 or M 53 Grade 60.

TOTAL BILL OF MATERIALS

Item	Unit	Super	Sub	Total
Bituminous Concrete Surface Course, Class I	Ton	58		58
Waterproofing Membrane System	Sq. Yd.	485		485
Concrete Removal	Cu. Yd.	82	10	92
Protective Coat	Sq. Yd.	165		165
Expansion Bolts (3/8" φ)	Each	60		60
Class X Concrete	Cu. Yd.	56.9	19.9	76.2
Precast Prestressed Concrete Deck Beams (21")	Sq. Ft.	1245		1245
Reinforcement Bars	Pound	2110	1010	3120
Temporary Concrete Barbs	Lbs.	90		90
Aluminum Railing, Type L	Lbs.	174		174
Reinforcement Bars (Epoxy Coated)	Pound	2610		2610
Name Plates	Each	1		1
Portland Cement Mortar Facing Course	Lbs.	178		178
Deck Slab Repair (Partial Depth)	Sq. Yd.	90		90
Expansion Bolts and Epoxy Reinforcement (See 210)	Sq. Ft.	7		7

\*(See Structural Provisions)

DESIGN STRESSES

$f_c = 5,000$  p.s.i.  
 $f_{ci} = 4,000$  p.s.i.  
 $f_s = 270,000$  p.s.i. (1" Strands)  
 $f_{si} = 183,000$  p.s.i. (1/2" Strands)

FIELD UNITS

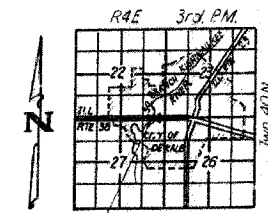
$f_c = 3,500$  p.s.i.  
 $f_y = 60,000$  p.s.i.

LOADING HS 20-44

Design Specifications: 1977 AASHTO, and 1976 Interim. Specs as applicable.  
Allow 25 #1/Sq. Ft. for future wearing surface.

WATERWAY INFORMATION

Drainage Area ..... 77.7 Sq. Miles  
Design Discharge (50 Year) ..... 3336 cfs  
Existing Opening ..... 770 Sq. Ft.  
Required Opening ..... 770 Sq. Ft.  
Proposed Opening ..... 770 Sq. Ft.  
Created Head for Design Flood ..... .24 ft.  
100 Year Discharge ..... 3767 cfs  
Created Head ..... .3 ft.



LOCATION SKETCH

GENERAL PLAN AND ELEVATION  
ILLINOIS ROUTE 38 OVER  
SO. BRANCH OF KISHWAUKEE RIVER  
FA. ROUTE 567 SECTION 34X-BY  
DEKALB COUNTY  
STATION 141+02.40

DESIGNED: J. L. Gonulsen	EXAMINED: [Signature]
CHECKED: J. L. Gonulsen	PASSED: [Signature]
DRAWN: J. L. Gonulsen	APPROVED: [Signature]
CHECKED: J. L. G.	

FOR INFORMATION ONLY

PLOT DATE \* \* \* \* \*  
FILE NAME \* \* \* \* \*  
PLOT SCALE \* \* \* \* \*  
REFERENCE \* \* \* \* \*  
DRAWING \* \* \* \* \*

REVISIONS	
NAME	DATE

ILLINOIS DEPARTMENT OF TRANSPORTATION  
EXISTING BRIDGE PLANS

FAP RTE 567 (IL RTE 38)  
SECTION 34X-BR  
DEKALB COUNTY

SCALE: VERT. \_\_\_\_\_  
HORIZ. \_\_\_\_\_  
DATE 2/24/06

DRAWN BY SUTHEARD  
CHECKED BY BOTT

COMPUTER FILE NO. D10800EPLN  
PROJECT 05198  
2/27/06-MDS

GREENE & BRADFORD, INC.  
CONSULTING ENGINEERS  
1000 N. W. 10th St., Suite 100  
Fort Lauderdale, FL 33304  
TEL: 954-575-1100 FAX: 954-575-1101  
WWW.GREENE-AND-BRADFORD.COM

EXISTING BRIDGE PLANS