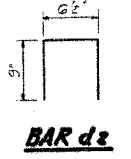
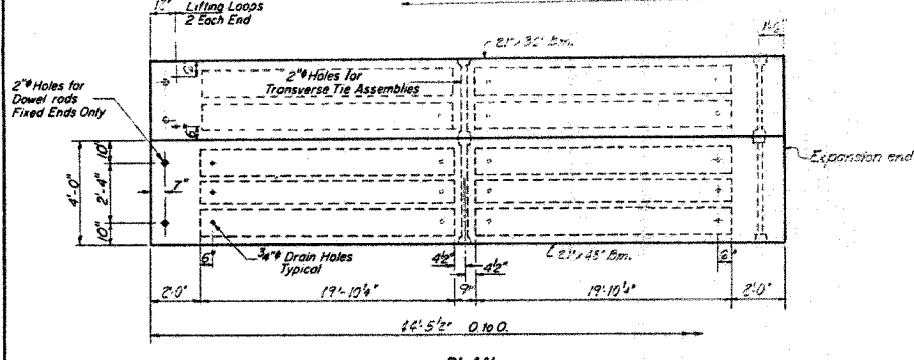
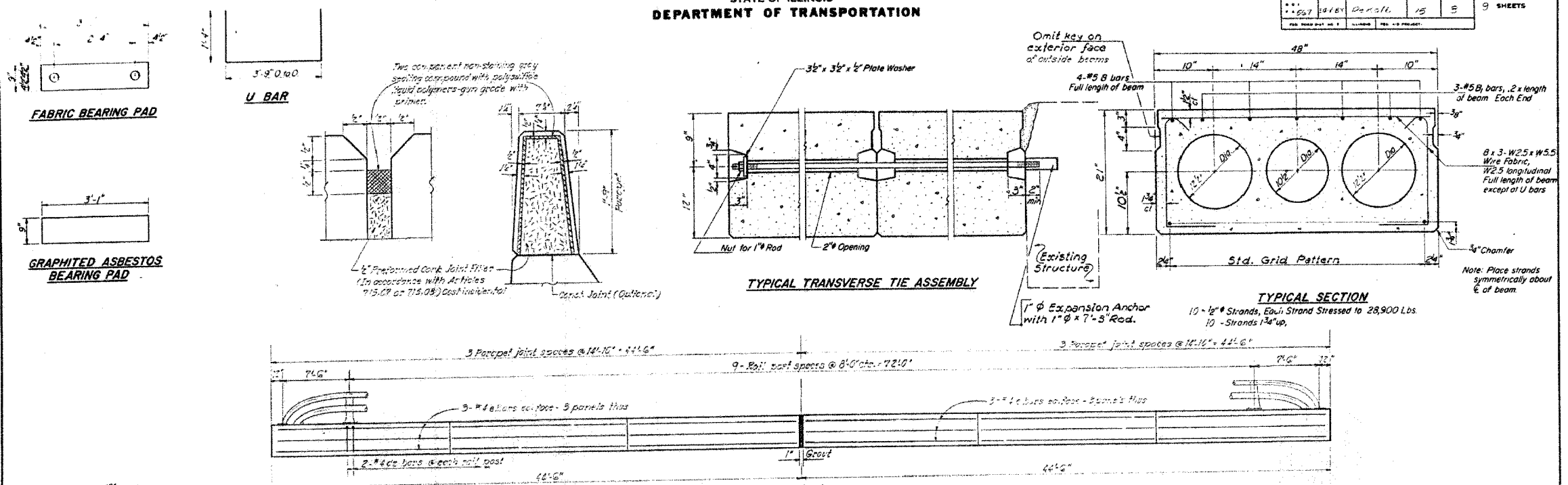


F.A.P. RTE.	SECTION	COUNTY	TOTAL SHEETS	SHEET NO.
567	34X-BR	DEKALB	90	50
STA.		TO STA.		
FED. ROAD DIST. NO.		ILLINOIS FED. AID PROJECT		

STATE OF ILLINOIS  
DEPARTMENT OF TRANSPORTATION

ROUTE NO.	SECTION	COUNTY	TOTAL SHEETS	SHEET NO.
567	34X-BR	DEKALB	90	50

9 SHEETS



Notes:  
Quantity of Class X Concrete and Reinforcement bars as proposed is included with superstructure Sheet #5.  
For Aluminum handrail details see sheet #6.

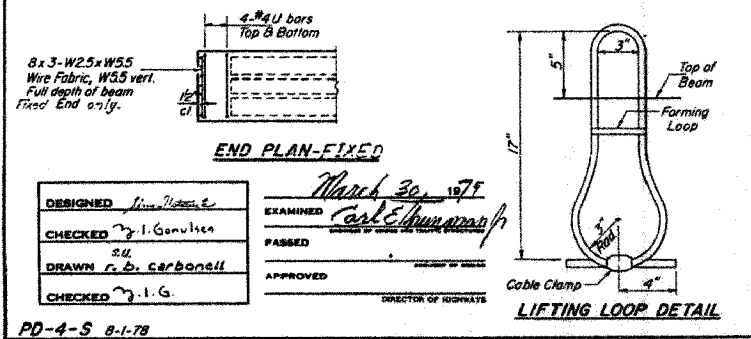
**BILL OF MATERIAL**

Bar	No.	Size	Length	Shape
Precast Prestressed Concrete Deck Beams (21' x 43')		Sq Ft	711	

**NOTES**  
Prestressing steel shall be non-galvanized high strength, stress-relieved 7-wire strand, Grade 270. The nominal diameter shall be 1/2" and the nominal cross-sectional area shall be 0.153 sq in. Lifting loops shall be 5" diameter, 5 x 25 class wire rope with fiber core and shall have a minimum ultimate tensile strength of 33,000 lbs.  
The 1" rods in the transverse tie assembly shall be tightened to a snug fit and the threads sat. Pockets that receive transverse tie bar on outside shall be filled with grout after transverse tie assembly is in place.  
Longitudinal shear keys shall be packed with a very dry mix of 2-1 sand and P.C. mortar. After beams have been erected, holes for the dowel anchors shall be drilled into the sub-structure and the anchor dowels shall be grouted in place.  
Reinforcement bars shall conform to AASHTO: M-51 or M-53, Grade 60.

Cost of reinforcement and accessories cast into the beam, of bearing pads, of armor angles, and of grouting longitudinal shear keys is included in unit price bid for Precast Prestressed Concrete Deck Beams.

**SUPERSTRUCTURE**  
F.A. RT. 567 SEC. 34-X-BY  
DEKALB COUNTY  
STATION 141+02.40



DESIGNED <i>Steve Nelson</i>	EXAMINED <i>March 30, 1977</i>
CHECKED <i>J. J. Gaultier</i>	PASSED
DRAWN <i>r. d. Carbonell</i>	APPROVED
CHECKED <i>J. J. G.</i>	DIRECTOR OF HIGHWAYS

PD-4-S 8-1-78

**FOR INFORMATION ONLY**

PLLOT DATE = #DAYS  
FILE NAME = #FILES  
PLOT SCALE = #SCALE  
REFERENCE = #REFS  
OPERATOR = #USERS

**REVISIONS**

NAME	DATE

ILLINOIS DEPARTMENT OF TRANSPORTATION  
**EXISTING BRIDGE PLANS**

FAP RTE 567 (IL RTE 38)  
SECTION 34X-BR  
DEKALB COUNTY

SCALE: VERT. \_\_\_\_\_  
HORIZ. \_\_\_\_\_  
DATE 2/24/06

DRAWN BY SUTHEARD  
CHECKED BY BOTT

**GREENB & BRADFORD, INC.**  
OF SPRINGFIELD

**COMPUTER FILE NO.**  
D10800EPLN

**PROJECT** 05198  
2/27/06-MDS

**EXISTING BRIDGE PLANS**