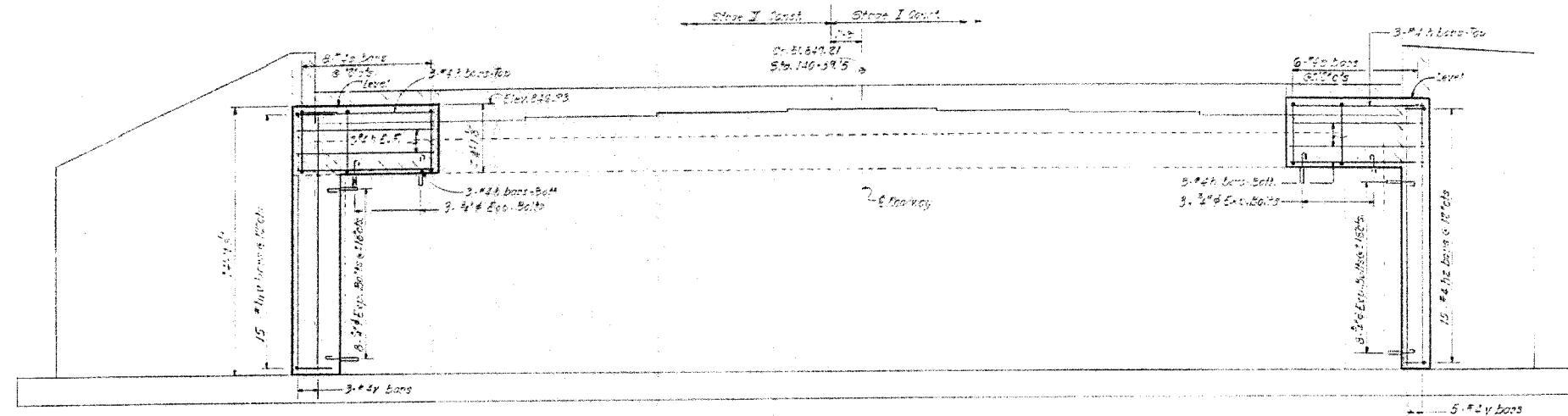


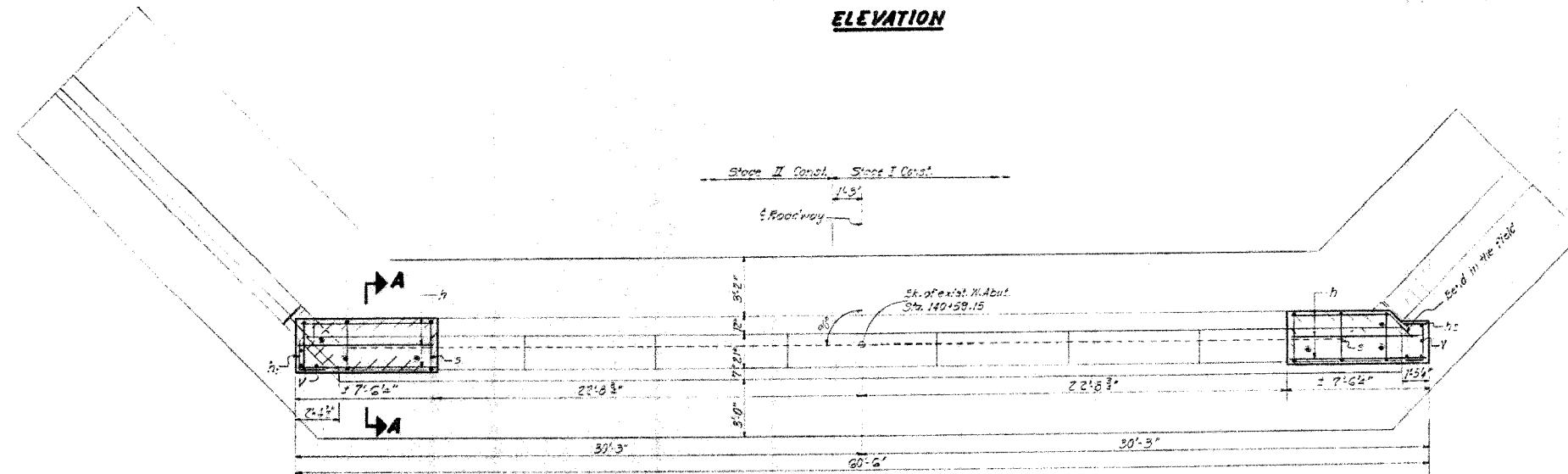
| F.A.P. RTE.         | SECTION | COUNTY   | TOTAL SHEETS     | SHEET NO. |
|---------------------|---------|----------|------------------|-----------|
| 567                 | 34X-BR  | DEKALB   | 90               | 53        |
| STA.                |         | TO STA.  |                  |           |
| FED. ROAD DIST. NO. |         | ILLINOIS | FED. AID PROJECT |           |

| REV. NO. | SECTION | COUNTY | TOTAL SHEETS | SHEET NO. |
|----------|---------|--------|--------------|-----------|
| 1        | 34X-BR  | DEKALB | 90           | 53        |

STATE OF ILLINOIS  
DEPARTMENT OF TRANSPORTATION

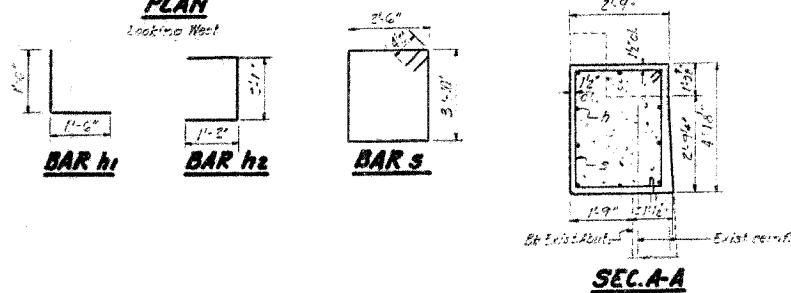


**ELEVATION**



**PLAN**

Notes:  
Hatched areas indicate concrete removal.  
Reinforcement extending into removed area shall be cleared and incorporated into the new concrete.  
All edges shall have standard 2" chamfers unless otherwise noted.  
Expansion bolts shall be anchored in sound concrete.



**BILL OF MATERIAL**

| Qty                  | No. | Size    | Length | Shape |
|----------------------|-----|---------|--------|-------|
| 4                    | 20  | #4      | 71.3"  | □     |
| 4                    | 15  | #4      | 31.0"  | □     |
| 4                    | 15  | #4      | 41.5"  | □     |
| 5                    | 12  | #2      | 13.5"  | □     |
| 4                    | 6   | #2      | 13.0"  | □     |
| Concrete Removal     |     | Cu. Yd. | 5      |       |
| Class X Concrete     |     | Cu. Yd. | 8.2    |       |
| Reinforcement Bars   |     | Pound   | 350    |       |
| Expansion Bolts (#4) |     | Each    | 22     |       |

**WEST ABUTMENT**  
**F.A. RT. 567 SEC. 34-X-BY**  
**DEKALB COUNTY**  
**STA. 141+02.40**

|          |               |
|----------|---------------|
| DESIGNED | Mark 30 10/11 |
| CHECKED  | I. Ganulsen   |
| DRAWN    | S.U.          |
| CHECKED  | J.G.          |
| EXAMINED | Coste         |
| PASSED   |               |
| APPROVED |               |

**FOR INFORMATION ONLY**

PLOT DATE = 04/15/06  
FILE NAME = 8FILEL8  
PLOT SCALE = 1/8"=1'-0"  
REFERENCE = SHEET  
DESCRIPTION = BRIDGE

| REVISIONS |      |
|-----------|------|
| NAME      | DATE |
|           |      |
|           |      |
|           |      |
|           |      |
|           |      |
|           |      |

ILLINOIS DEPARTMENT OF TRANSPORTATION  
**EXISTING BRIDGE PLANS**

FAP RTE 567 (IL RTE 38)  
SECTION 34X-BR  
DEKALB COUNTY

SCALE: VERT. \_\_\_\_\_  
HORIZ. \_\_\_\_\_  
DATE: 2/24/06  
DRAWN BY: SUTHEARD  
CHECKED BY: BOTT

|  |   |                                 |
|--|---|---------------------------------|
|  | GREENE & BRADFORD, INC.<br>OF SPRINGFIELD | COMPUTER FILE NO.<br>D10800EPLN |
|  | PROJECT 05198<br>2/21/06-MDS              |                                 |

**EXISTING BRIDGE PLANS**