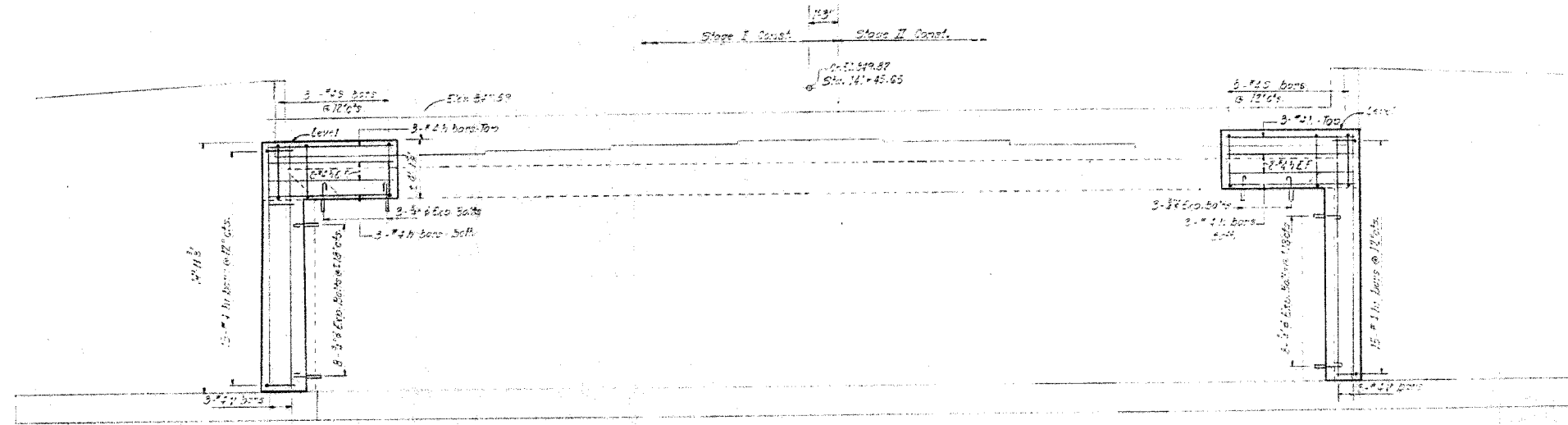


F.A.P. RTE.	SECTION	COUNTY	TOTAL SHEETS	SHEET NO.
567	34X-BR	DEKALB	90	54
STA.		TO STA.		
FED. ROAD DIST. NO.		ILLINOIS	FED. AID PROJECT	

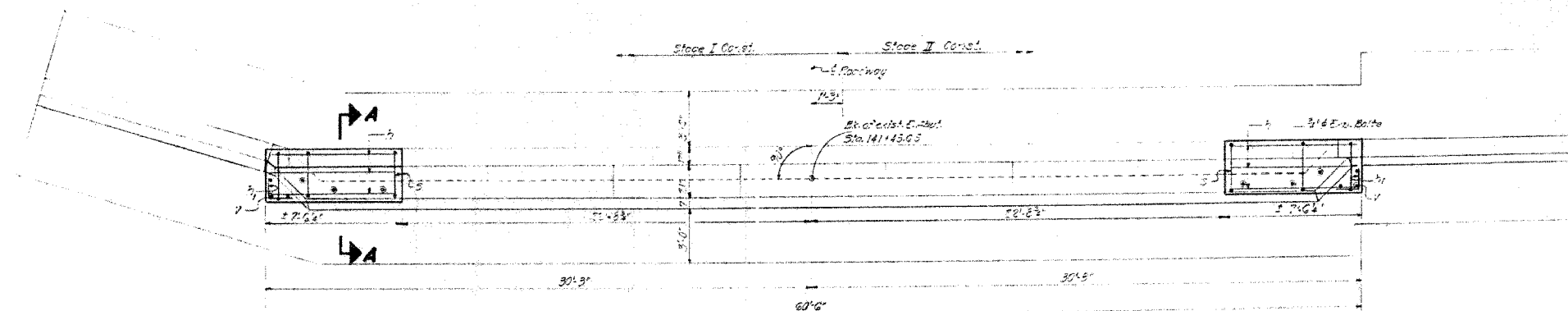
STATE OF ILLINOIS
DEPARTMENT OF TRANSPORTATION

DATE	BY	REVISION	TOTAL SHEETS	SHEET NO.
2/27/06	SM	REVISED	90	54

SHEET NO. 3
9 SHEETS

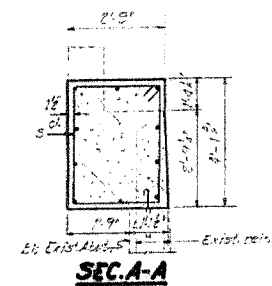
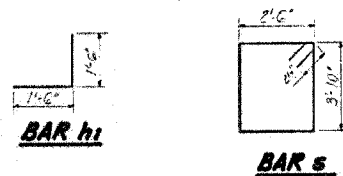


ELEVATION



PLAN
(Looking East)

Note:
Hatched areas indicate Concrete Removal.
All edges shall have 2" x 2" chamfers unless otherwise noted.
Reinforcement extending into removed area shall be cleaned and incorporated into the new construction.
Expansion bolts shall be anchored in sound concrete.



BILL OF MATERIAL

Bar	No.	Size	Length	Qty.
h	20	#4	7'-3"	
h'	30	#4	3'-0"	
s	16	#2	15'-5"	
v	5	#2	12'-7"	
Concrete Removal				5
Class II Concrete				8-3
Reinforcement Bars				500
Expansion Bolts (4")				22

EAST ABUTMENT
F.A.R.T. 567 SEC. 34-X-BY
DEKALB COUNTY
STA. 141+02.40

DESIGNED	<i>J. J. [Signature]</i>	EXAMINED	<i>Carl E. [Signature]</i>
CHECKED	<i>J. J. [Signature]</i>	PASSED	
DRAWN	<i>S. G.</i>	APPROVED	
CHECKED	<i>J. G.</i>		

REVISIONS	
NAME	DATE

ILLINOIS DEPARTMENT OF TRANSPORTATION
EXISTING BRIDGE PLANS

FAP RTE 567 (IL RTE 38)
SECTION 34X-BR
DEKALB COUNTY

SCALE: VERT. _____
HORIZ. _____
DATE 2/24/06

DRAWN BY SUTHEARD
CHECKED BY BOTT

GREENE & BRADFORD, INC.
CONSULTING ENGINEERS
OF SPRINGFIELD

COMPUTER FILE NO.
D10800EPLN
PROJECT 05198
2/27/06-MDS

FOR INFORMATION ONLY

PLOT DATE = 02/24/06
FILE NAME = 05198EPLN
PLOT SCALE = 1/8"=1'-0"
PLOT DATE = 02/24/06
OPERATOR = MDS